

O.D.O.T. DISTRICT 2 SURVEY OFFICE

PERSONNEL _____

REFERENCE NO. 10

SHEET 15 OF 68

NOTES S. HOSS

H.C. B. VAN DUSEN

R.C. K. MOSEL

DATE 5-28-97

WEATHER PARTLY CLOUDY / WINDY

TEMP. +61°F

ROUTE US-24

COUNTY Lucas

TOWNSHIP Providence

SECTION 5

T 5 N R 9 E

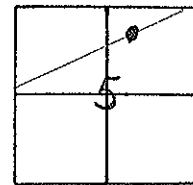
TYPE MONUMENT PK WASHER

ON SURFACE - ~~BELOW~~ ON

LEFT - ~~C PAV'T.~~ RIGHT 2.0'

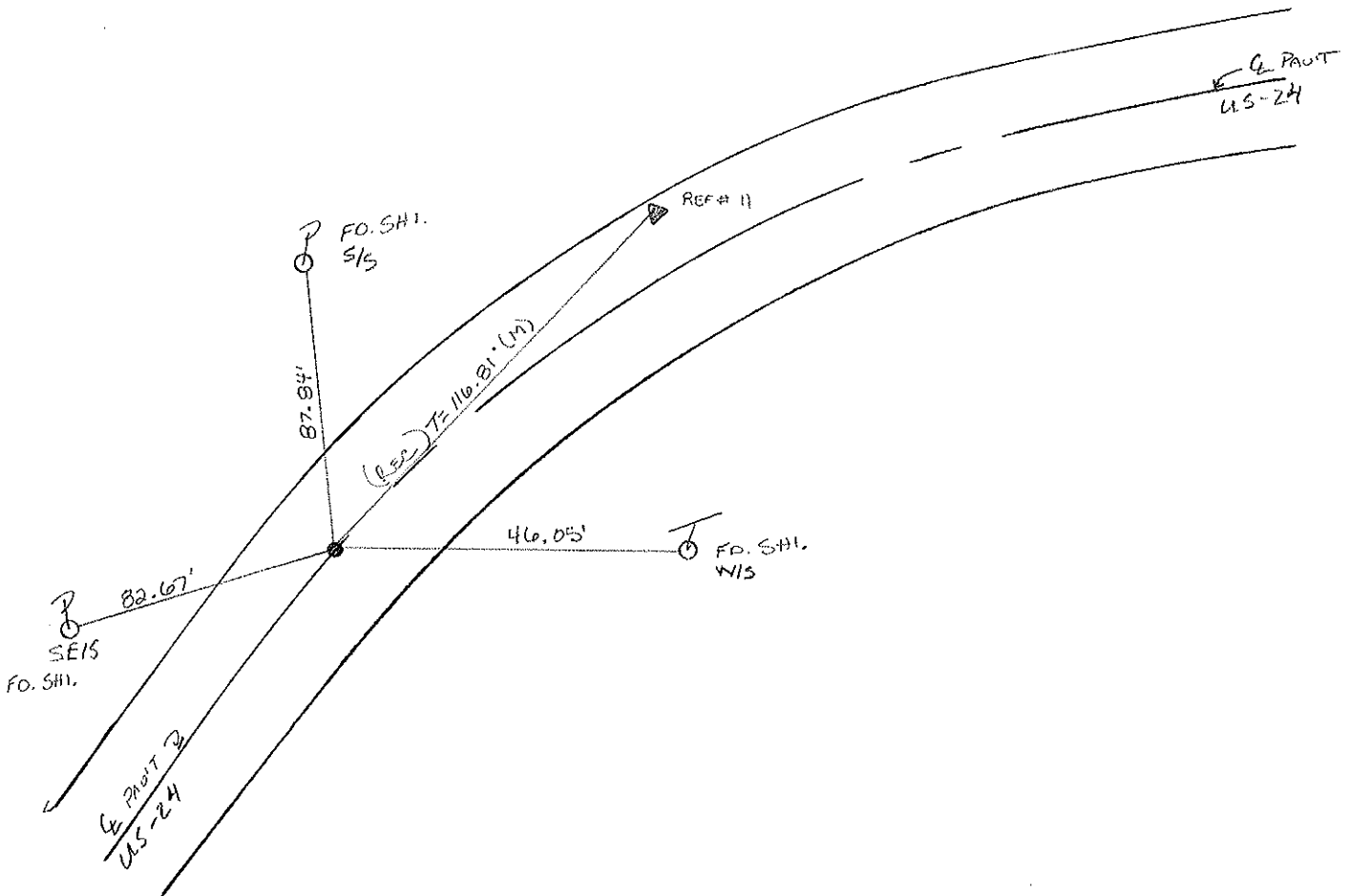
10.0 TO LT EDGE PAVEMENT

S.L.M. 113 + 81



P.C. TO CURVE

Set PK WASHER
10-21-97
SAH



O.D.O.T. DISTRICT 2 SURVEY OFFICE

PERSONNEL

REFERENCE NO. 10

SHEET 8 OF

NOTES VAN DUSEN

H.C. K. MOSER

DATE 10-7-94

ROUTE US #24

R.C. R. SLOVAK

WEATHER SUNNY

COUNTY LUCAS

S. HERMILLER P

TEMP. +60° F

TOWNSHIP PROVIDENCE

SECTION 5

T. 5 N R. 9 E

Set P.K./WASHER
5-15-95
C.L.

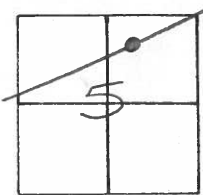
TYPE MONUMENT SM. R.R. SPK.

~~ON SURFACE~~ - BELOW 2" BELOW

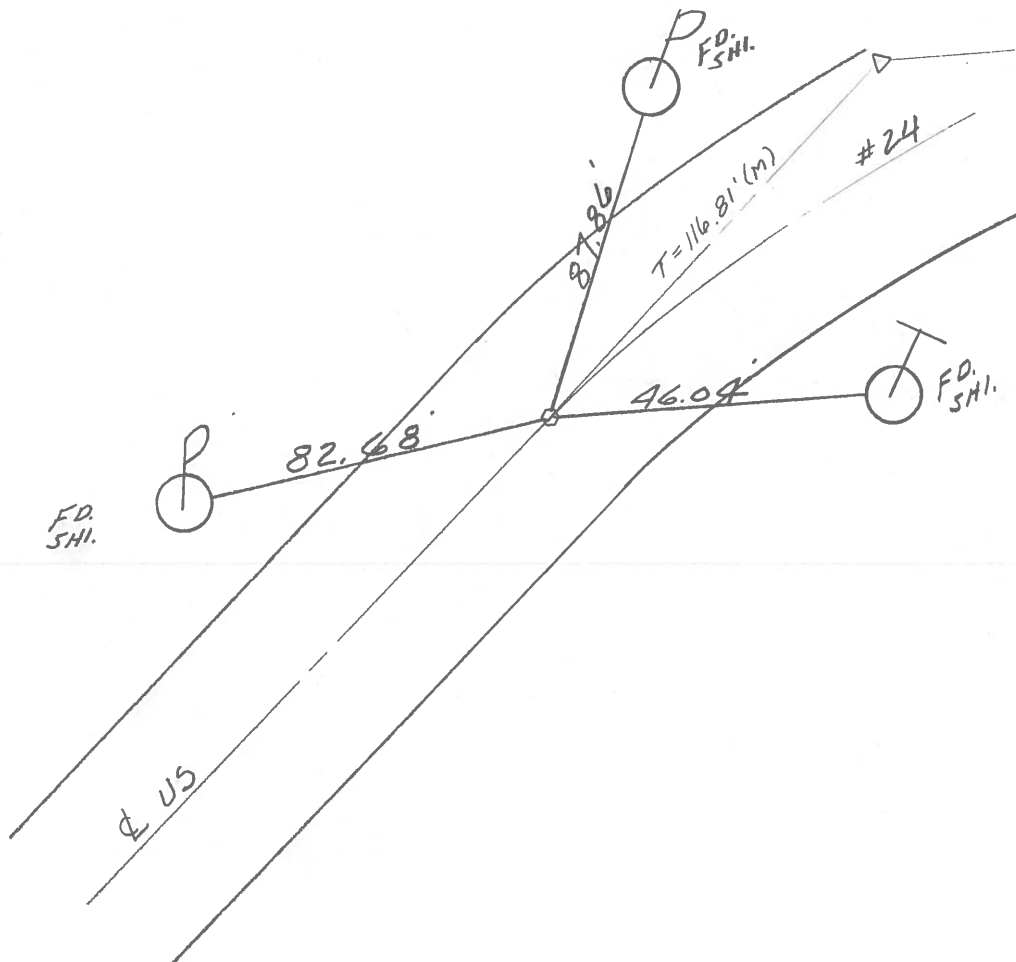
~~LEFT-C. PAV'T.~~ - RIGHT 2.2'

2.1' TO L.T. EDGE PAVEMENT

S.L.M. 113+57



P.C. to Curve



O.D.O.T. DISTRICT 2 SURVEY OFFICE

PERSONNEL _____

REFERENCE NO. 10

SHEET 8 OF _____

NOTES L. Stone

H.C. D. Curtis

R.C. J. Houschelder

DATE 24 Aug. 89

WEATHER Cloudy

TEMP. 70°

ROUTE US#24

COUNTY Lucas

TOWNSHIP Providence

SECTION 5

T _____ R _____

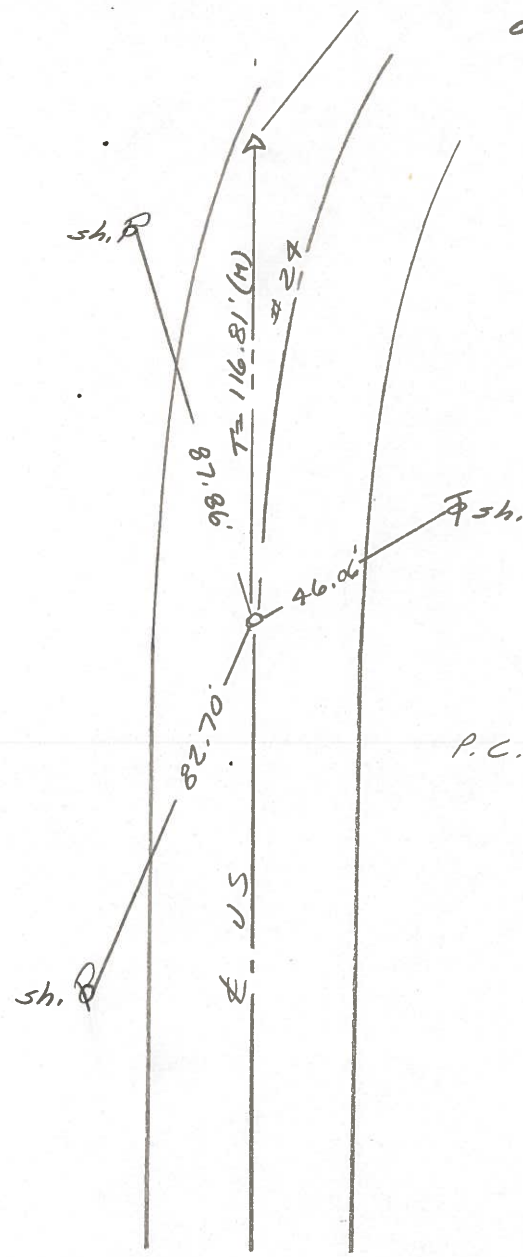
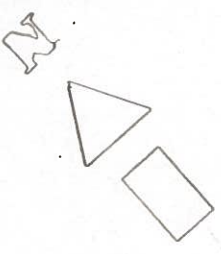
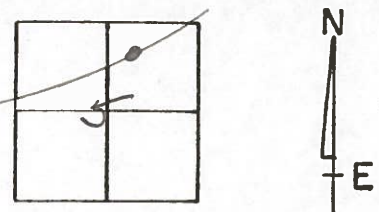
TYPE MONUMENT Small RR Spk.

ON SURFACE - BELOW 2" deep

LEFT - \odot PAV'T. - RIGHT _____

_____ TO _____ EDGE PAVEMENT

S.L.M. 113+48



OK 10/13/89 1125

Q.D.O.T. DISTRICT 2 SURVEY OFFICE

Sht. 13 of

County Lucas S.R. 05#24

Township Providence

Section 5

T N, R E

Personnel I. Stone

R. Michalak

P. Houser

D. Curtis

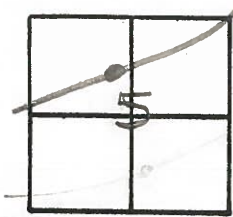
D. Grunsky

10

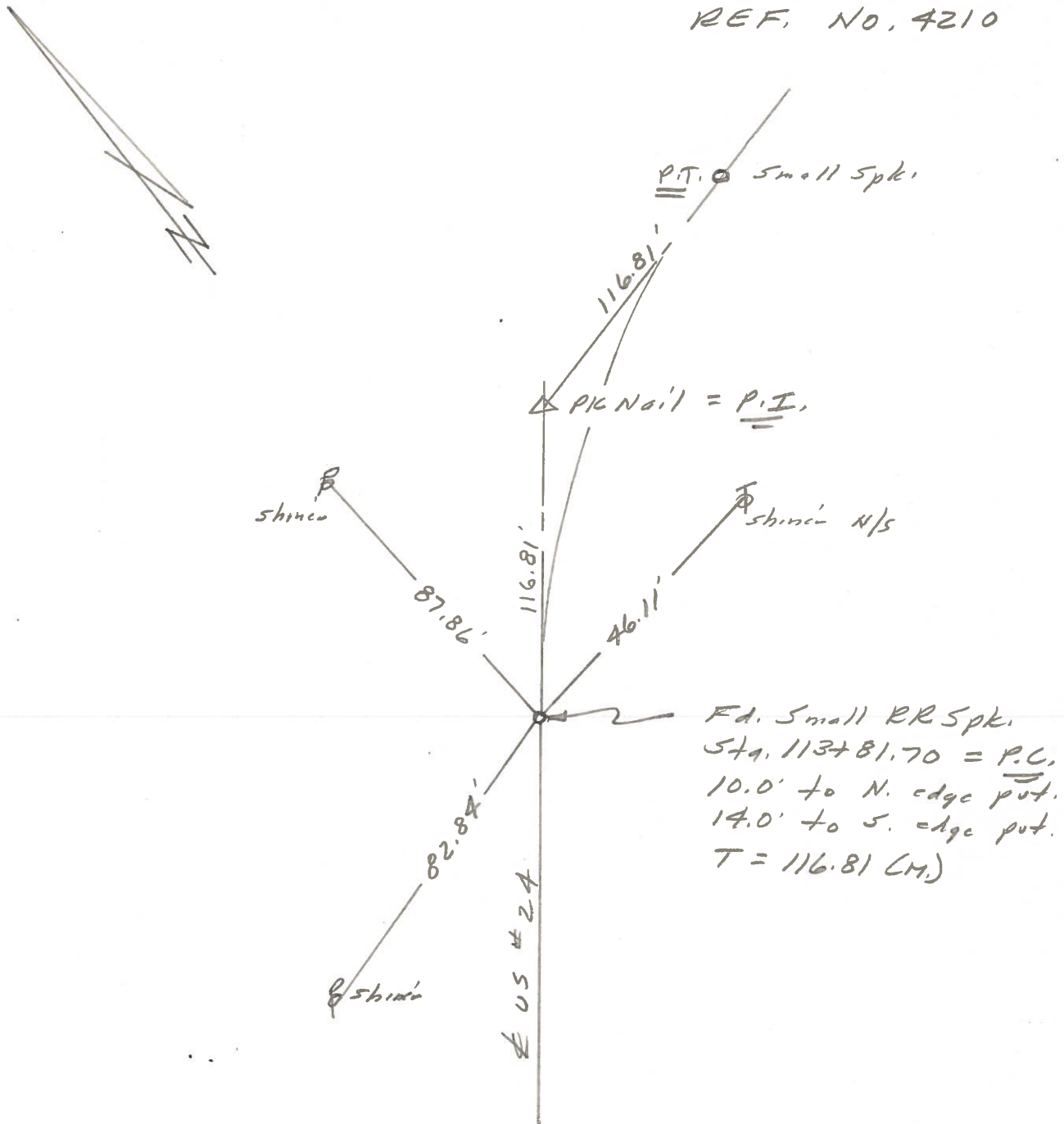
Date 24 June 1980

Weather Cloudy

Temp. 74°



REF. NO. 4210



PERSONNEL TITLE PERSONNEL TITLE

W. DENNO

COUNTY LUCAS

DATE JULY 1 1971

D. CURTIS

S. R. U.S. # 24

WEATHER CLOUDY

D. STEVENS

SEC.

TEMP. 80°±

DESCRIPTION

REFERENCES TO CONTROL POINTS
LEFT CENTER LINE RIGHT

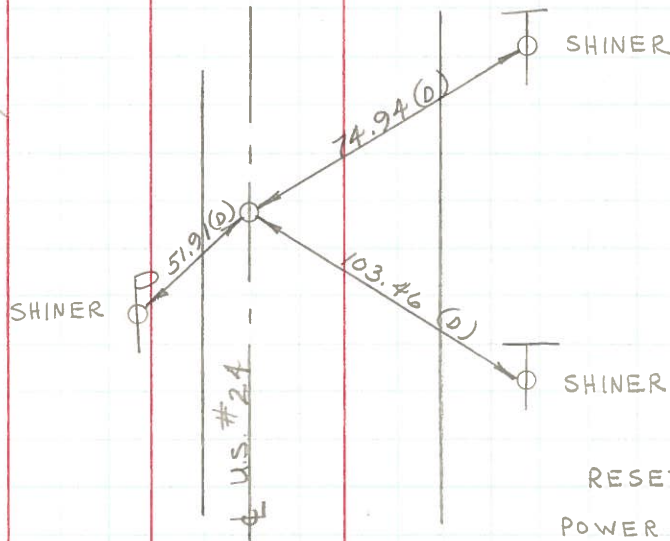
JOB NO.

(10)

UNABLE TO LOCATE REFERENCE POINTS FOR P.C.
STA. 113 + 81.70

(11)

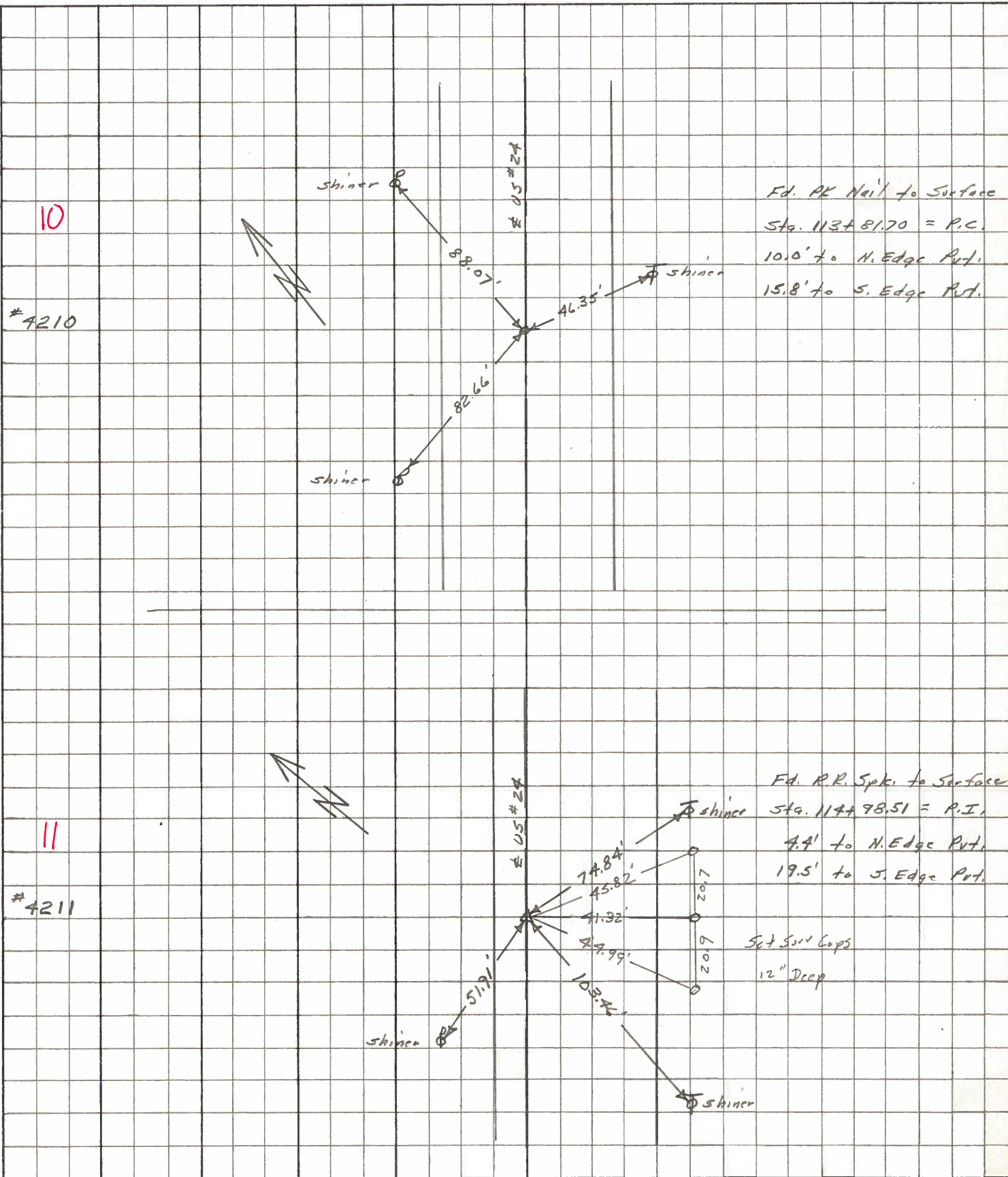
N



RESET CONTROL FROM
POWER POLE AND SOUTH
TELEPHONE POLE
P.K NAIL STA. 114 + 98.51 = P.I.

PERSONNEL	TITLE	PERSONNEL	TITLE	COUNTY	DATE
Stone	Notes			Lucas	May 68
Beck	Flag			S. R. # 24	WEATHER Fair
Michalak	Tape			SEC.	TEMP.
Schroder	Tape				

DESCRIPTION References to Control Points JOB NO. _____



PERSONNEL	TITLE	PERSONNEL	TITLE	COUNTY	2003	DATE	2 Feb 16
Stone				S. R.	#29	WEATHER	Cool
Beck				SEC.		TEMP.	29°
Schroder							

DESCRIPTION Refs to Control Pts. JOB NO. _____

	LEFT	CENTER LINE	RIGHT
79+37.57 = P.T.		48.80'	N.E. To "X" Middle of C.B. (P)
	Ed. P.P. Spk.	37.23'	S. To Shiner in T.P. (D)
7	1/2" Below Surface	50.67'	S.W. To Iron Fence Post (P)
96+96.55 = P.C.		50.68'	N.N.E. To Cor. Bldg (D)
	Set PK Nail	71.00'	N.W. To S.W. Cor. Bldg. (D)
8	3/4" Below Surface	52.38'	S.W. To Shiner in T.P. (D)
100+16.30 = Δ		28.76'	N.E. To "t" on N.W. Cor. Walkway (D)
	Jeffers & Ludwig Pkts.	45.63'	N. To "t" on E. Edge Pump Island (D)
9	Ed. P.P. Spk. to Surface	54.30'	N.W. To "t" on W. " " " (D)
113+81.70 = P.C.		88.07'	S.E. To Shiner in T.P. (D)
	Set PK No. 1	46.35'	S.E. To Shiner in T.P. (D)
10	To Surface	82.66'	N.W. To Shiner in T.P. (D)
114+98.51 = Δ		103.46'	S.W. To Shiner in T.P. (D)
	Ed. P.P. Spk.	74.87'	S.E. To Shiner in T.P. (D)
11	To Surface	51.91'	N.W. To Shiner in T.P. (D)
116+15.03 = P.T.		40.99'	N.W. To Shiner in T.P. (D)
	Set PK 1/2"	70.23'	S.W. To Shiner in T.P. (D)
12	Below Surface	107.57'	S.E. To Shiner in T.P. (D)
127+49.53 = Δ		69.19'	S. To Steel Fence Post (D)
	Ed. 1/2" I. Pipe	80.09'	S.W. To Shiner in T.P. (D)
13	at Surface	96.08'	N. To Shiner in T.P. (D)
		37.21'	N.W. To Shiner in End Guard Post (D)

PERSONNEL TITLE PERSONNEL TITLE COUNTY Lucas DATE 1958
 #
 S. R. 24 WEATHER
 crew
 SEC. He. - LUC. - Waterville TEMP (0.00)

DESCRIPTION LEFT CENTER LINE RIGHT JOB NO.

