

O.D.O.T. DISTRICT 2 SURVEY OFFICE

PERSONNEL _____

REFERENCE NO. 11

SHEET 16 OF 68

NOTES S. AUSS

H.C. B. VAN DUSEN

R.C. K. MOSER

DATE 5-28-97

WEATHER PARTLY CLOUDY / WINDY

TEMP. +61°F

ROUTE US-24

COUNTY Lucas

TOWNSHIP Providence

SECTION 5

T 5 N R 9 E

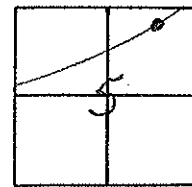
TYPE MONUMENT PK. NAIL & WASHER

ON SURFACE BELOW YES

LEFT- 0 PAV'T. - RIGHT 8.0'

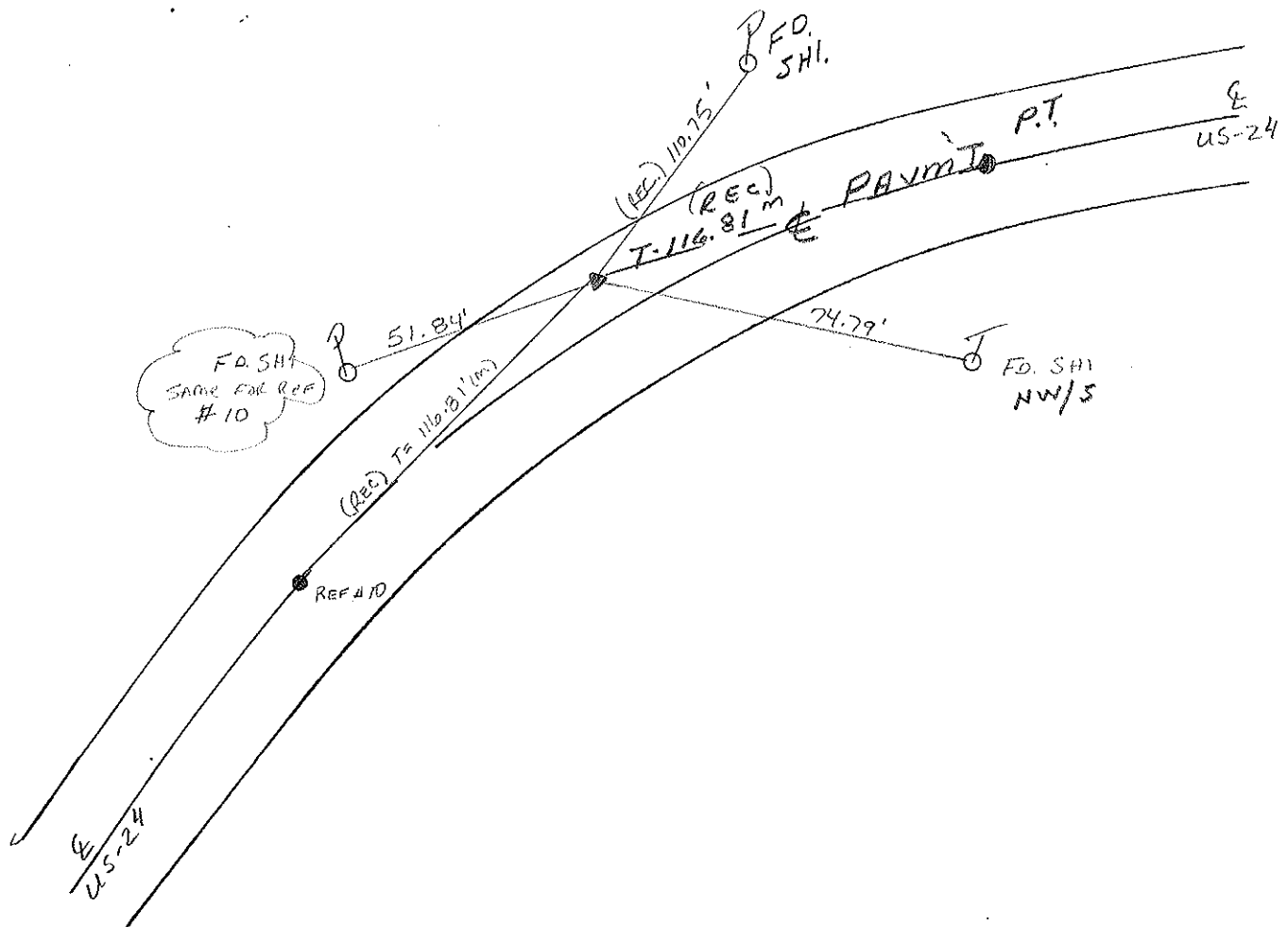
4.0' TO LT. EDGE PAVEMENT

S.L.M. 114 198



*P.I. TO CURVE
REC!*

*Set PK/WASHER
10-21-97
SAH*



O.D.O.T. DISTRICT 2 SURVEY OFFICE

PERSONNEL

REFERENCE NO. 11

SHEET 9 OF

NOTES VAN DUSEN

H.C. K. MOJER

DATE 10-7-94

ROUTE US#24

R.C. R. SLOVAK

WEATHER SUNNY

COUNTY LUCAS

S. HERMILLER P

TEMP. +65°F

TOWNSHIP Providence

SECTION 5

Set PK/WASHER

S-15-95

T. 5 N R 9 E

TYPE MONUMENT PK NAIL

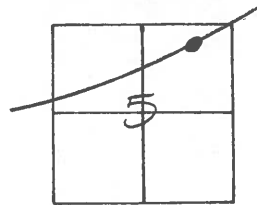
ON SURFACE - BELOW YES

LEFT - 0 PAV'T. - RIGHT 8.0'

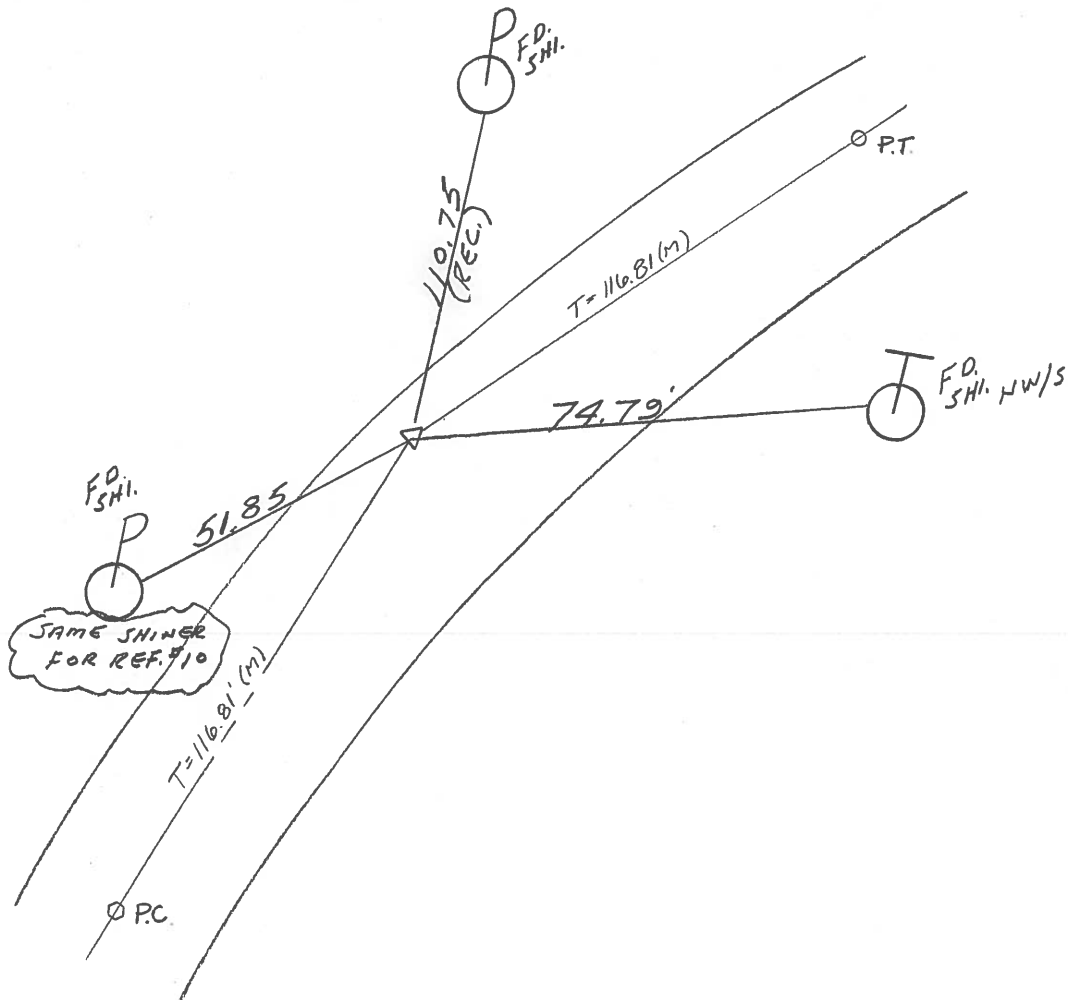
3' TO L EDGE PAVEMENT

S.L.M. 114+73

C.L.



P.I. TO CURVE



O.D.O.T. DISTRICT 2 SURVEY OFFICE

PERSONNEL

REFERENCE NO. 11

SHEET 9 OF

NOTES 1. Stone

H.C. D. Curtis

R.C. J. Hoosholder

DATE 24 Aug. 89

WEATHER Cloudy

TEMP. 72°

ROUTE US #24

COUNTY Lucas

TOWNSHIP Providence

SECTION 5

T R

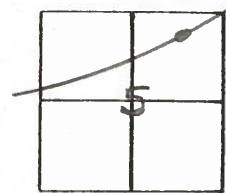
TYPE MONUMENT PK Nail

ON SURFACE - BELOW Surface

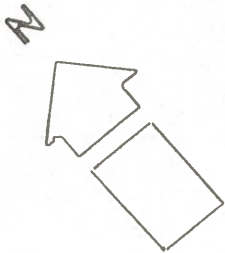
LEFT - \odot PAV'T. - RIGHT

 TO EDGE PAVEMENT

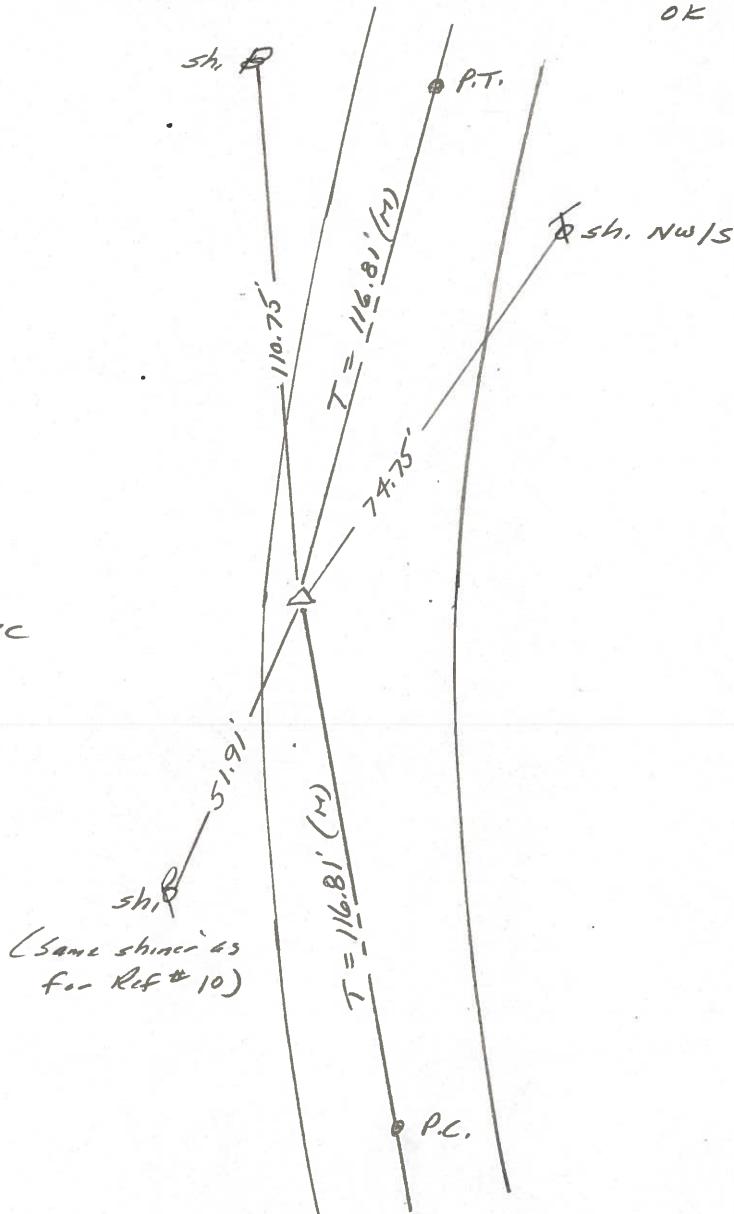
S.L.M. 114 +65



OK 10/13/89 IRS



P.I. to Curve



ODOT. DISTRICT 2 SURVEY OFFICE

Sht. 14 of

County Lucas S.R. US #24

Date 24 June 1980

Township Providence

Weather cloudy

Section 5

Temp. 74°

T N, R E

Personnel L. Stone

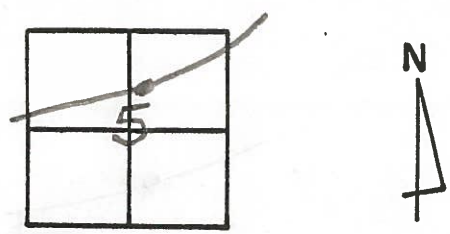
R. Michalak

P. Neuser

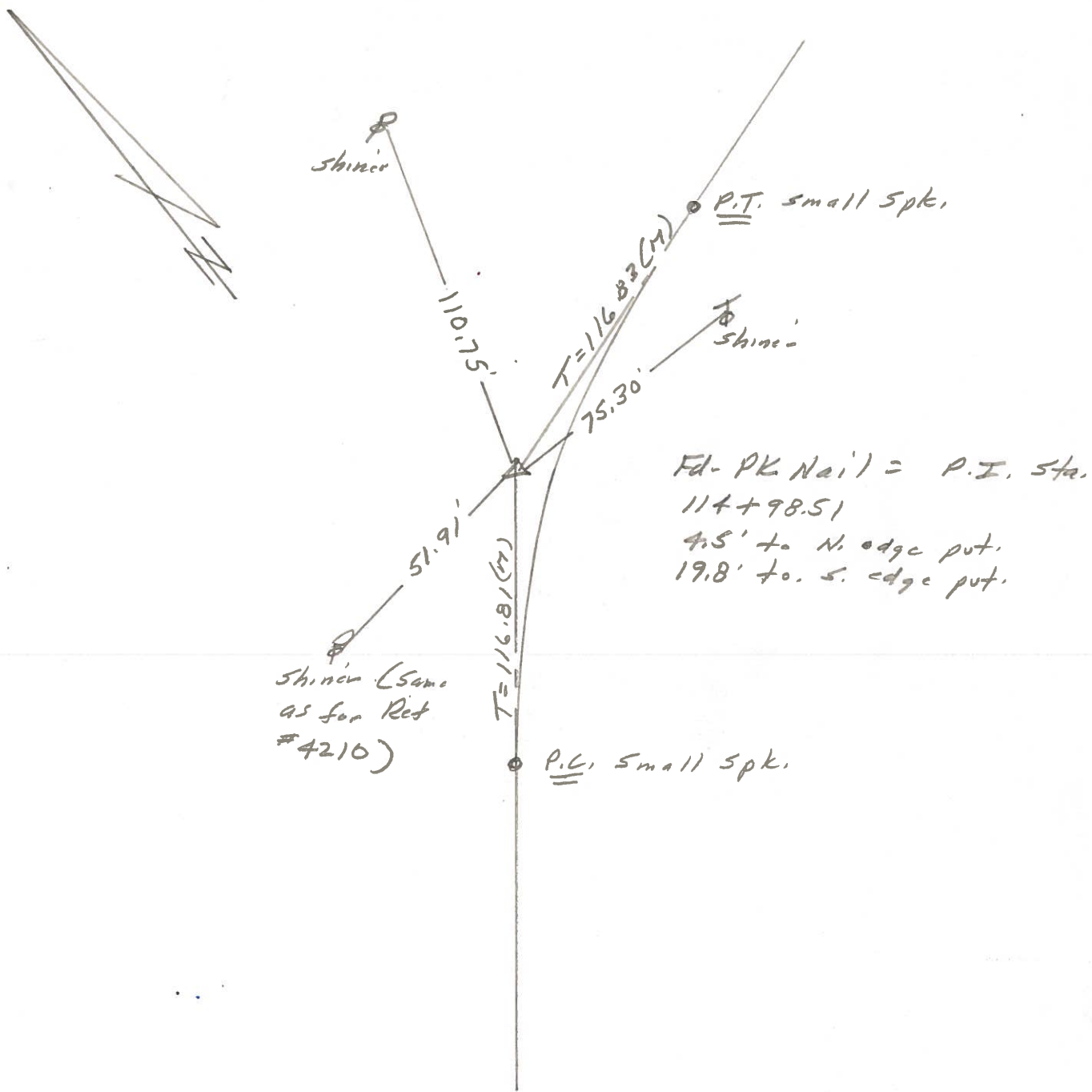
D. Curtis

D. Gramata

||

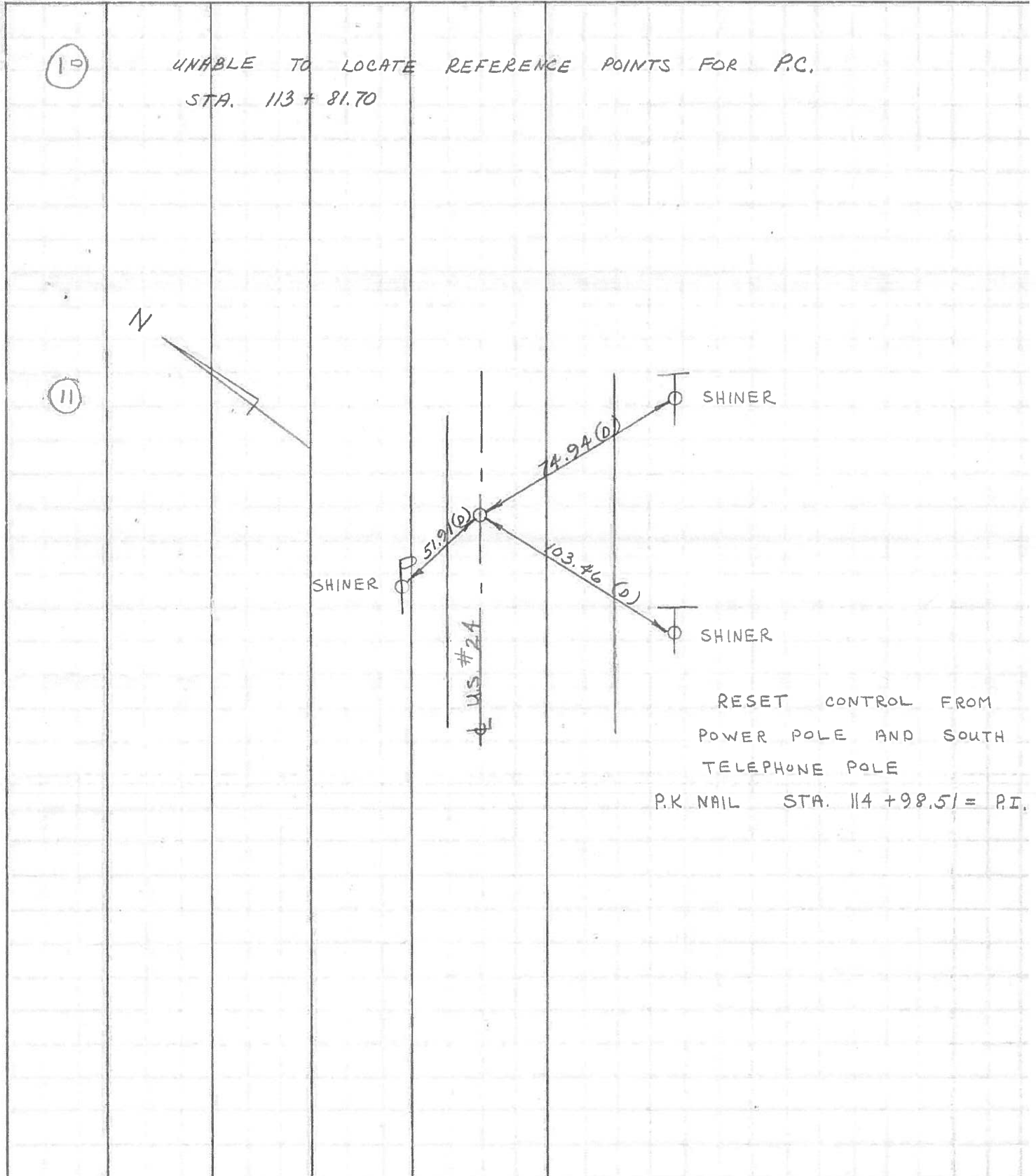


REF. NO. 4211



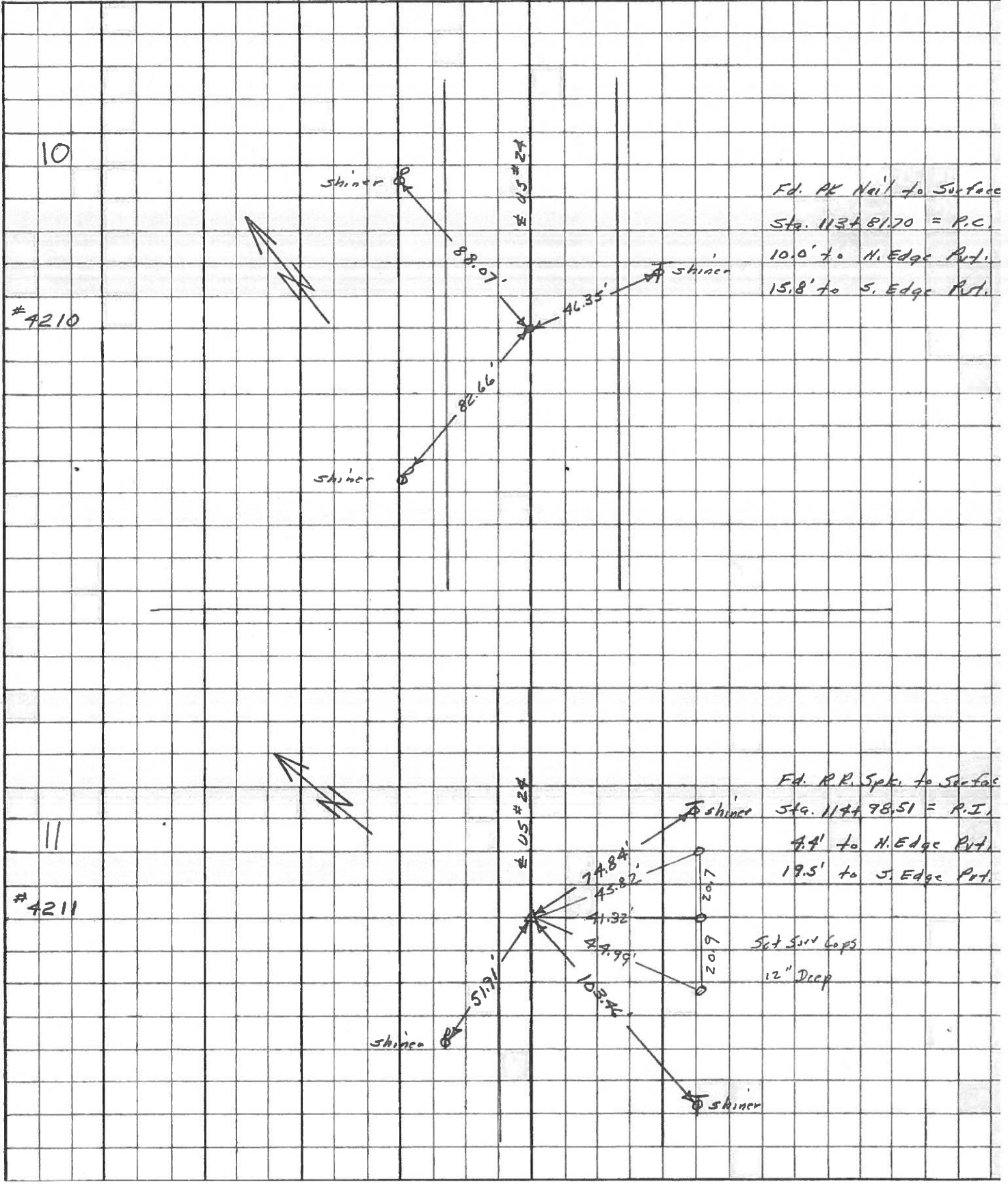
PERSONNEL	TITLE	PERSONNEL	TITLE	COUNTY	DATE
<u>W. DENNO</u>				<u>LUCAS</u>	<u>JULY 1 1971</u>
<u>D. CURTIS</u>				S. R. <u>U.S. #24</u>	WEATHER <u>CLOUDY</u>
<u>D. STEVENS</u>				SEC.	TEMP. <u>80°±</u>

DESCRIPTION	REFERENCES TO CONTROL POINTS			JOB NO.
	LEFT	CENTER LINE	RIGHT	



PERSONNEL	TITLE	PERSONNEL	TITLE	COUNTY	DATE	WEATHER	TEMP.
Stone	Notes			Lucas	May 68	Fair	
Geek	Flag			S. R. #24			
Michalak	Tape						
Schroder	Tape			SEC.			

DESCRIPTION References to Control Points JOB NO.



PERSONNEL TITLE PERSONNEL TITLE
Stone _____ COUNTY Lucas DATE 2 Feb 66
Beck _____ S. R. #29 WEATHER Cool
Schroter _____ SEC. _____ TEMP. 29°

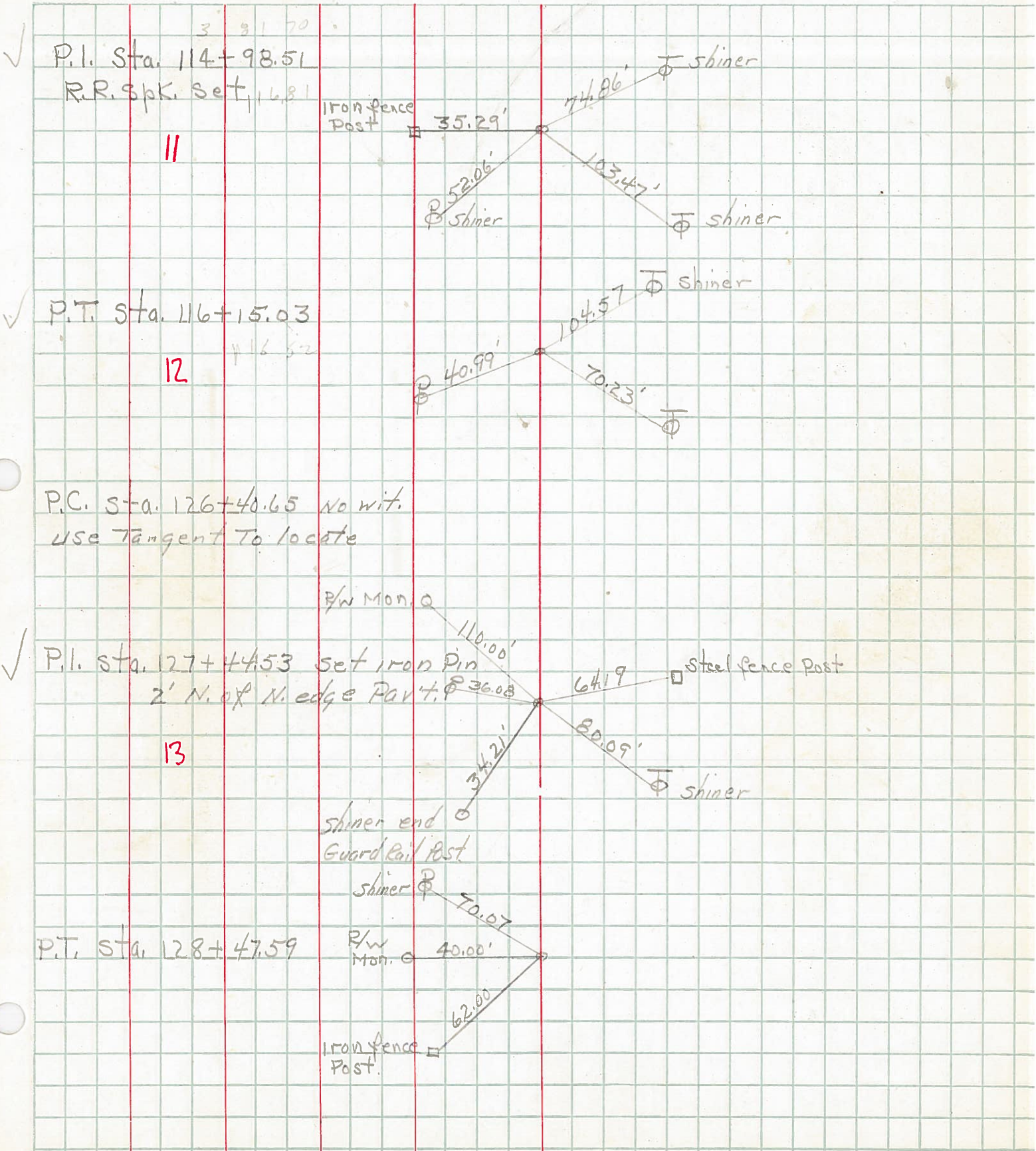
DESCRIPTION R-6 to Central Pts. JOB NO. _____
 LEFT CENTER LINE RIGHT

DESCRIPTION	LEFT	CENTER LINE	RIGHT
79+37.57 = P.T.		48.80'	N.E. To "X" Middle of C.B. (P)
7	Ed. P.P. Spt. 1/2" Below Surface	39.23' 50.67'	S. To Shiner in T.P. (D) S.W. To Iron Fence Post (P)
96+96.55 = P.C.		50.68'	N.N.E. To Cor. Bldg (D)
8	Set PK No. 1 3/4" Below Surface	71.00' 52.38'	N.W. To S.W. Cor. Bldg. (D) S.W. To Shiner in T.P. (D)
100+16.30 = Δ		38.76'	N.E. To "f" on N.W. Cor. Walkway (Z)
9	Jeffers & Ludwig Pts. Ed. P.P. Spt. to Surface	45.63' 54.30'	N. To "f" on E. Edge Pump Island (D) N.W. To "f" on W. " " " (D)
113+81.70 = P.C.		88.07'	S.E. To Shiner in T.P. (D)
10	Set PK No. 1 To Surface	46.35' 82.66'	S.E. To Shiner in T.P. (D) N.W. To Shiner in T.P. (D)
114+98.31 = Δ		103.46'	S.W. To Shiner in T.P. (D)
11	Ed. P.P. Spt. to Surface	74.84' 51.91'	S.E. To Shiner in T.P. (D) N.W. To Shiner in T.P. (D)
116+15.03 = P.T.		40.99'	N.W. To Shiner in T.P. (D)
12	Set PK 1/2" Below Surface	70.23' 109.57'	S.W. To Shiner in T.P. (D) S.E. To Shiner in T.P. (D)
127+99.53 = Δ		69.19'	S. To Steel Fence Post (D)
13	Ed. 1/2" I. Pipe at Surface	80.09' 36.08' 34.21'	S.W. To Shiner in T.P. (D) N. To Shiner in T.P. (D) N.W. To Shiner in End Guard Post (D)

PERSONNEL TITLE PERSONNEL TITLE
 Silvester _____
 & _____
 crew _____

COUNTY Lucas DATE 1958
 S. R. #24 WEATHER _____
 SEC. _____ TEMP. _____

DESCRIPTION LEFT CENTER LINE RIGHT JOB NO.



PERSONNEL TITLE PERSONNEL TITLE

Mennitt
Jackson
Gulyas

COUNTY Lucas

DATE 9-25-51

S. R. Luc. 24

WEATHER

SEC.

TEMP.

DESCRIPTION

Mon. Ref.

JOB NO.

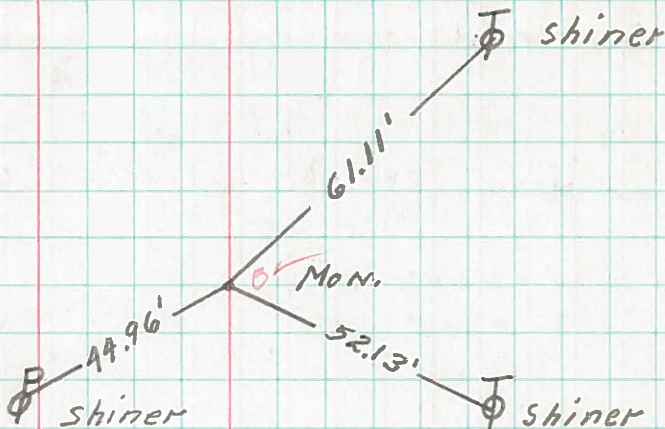
LEFT

CENTER LINE

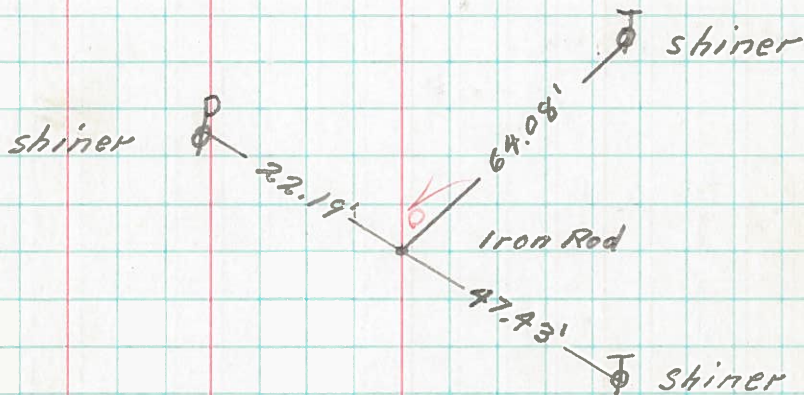
RIGHT

SET NEW MON.

P.T. 124+32.82



P.C. 122+48.24



P.I. on Grant Line 114+25.2

