

O.D.O.T. DISTRICT 2 SURVEY OFFICE

PERSONNEL

REFERENCE NO. 12

SHEET 10 OF

NOTES VAN DUSEN

H.C. K. MOSER

DATE 10-7-94

ROUTE US #24

R.C. R. SLOVAK

WEATHER SUNNY

COUNTY LUCAS

S. HERMILLER P

TEMP. +65° F

TOWNSHIP Providence

SECTION 5

Set P.K./WASHER
5-15-95
C.L.

T.5 N R 9 E

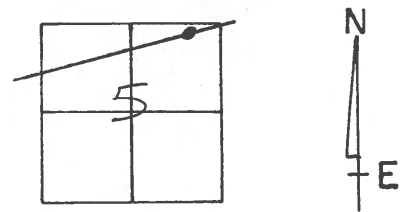
TYPE MONUMENT P.K. NAIL

ON SURFACE - BELOW YES

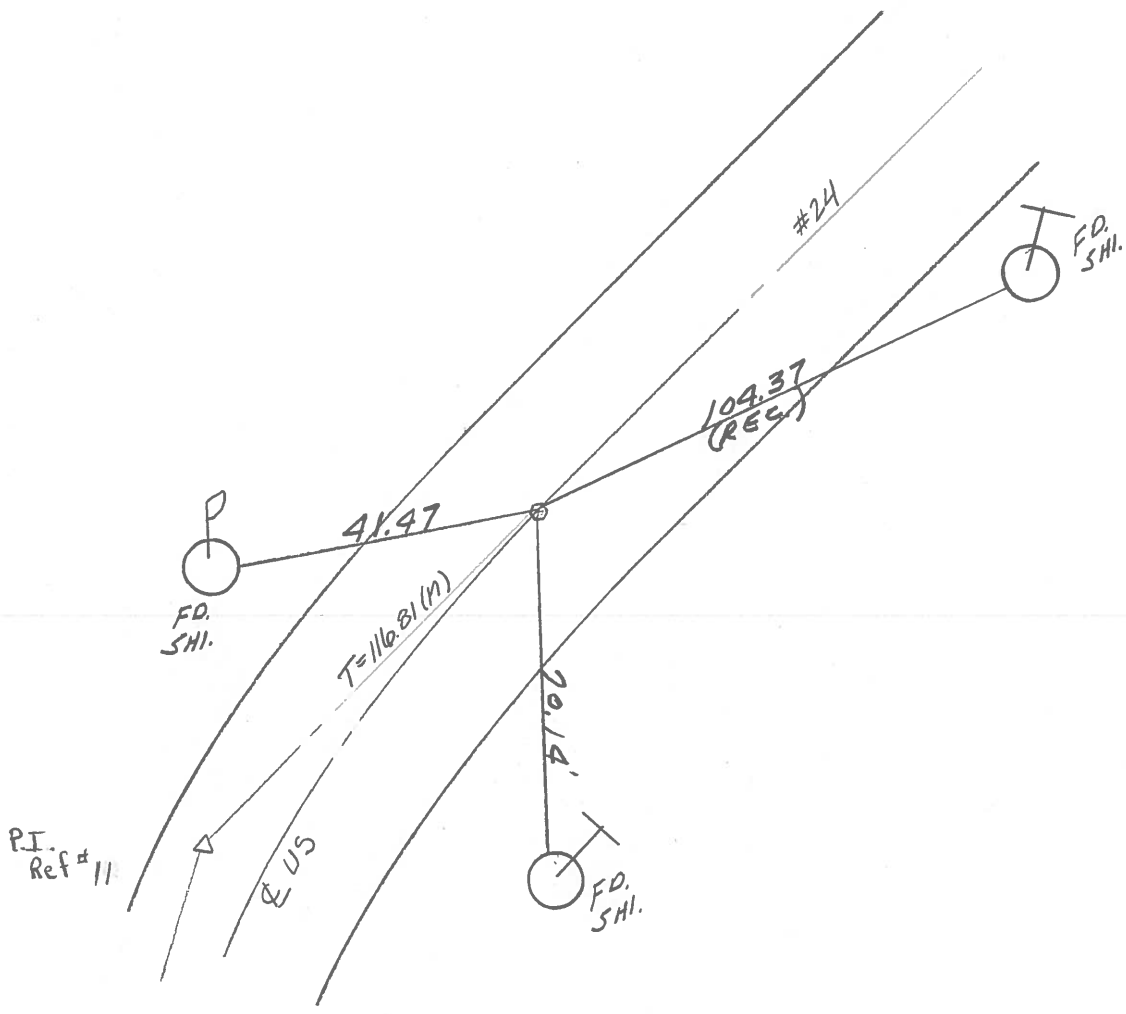
LEFT - 0 PAV'T. - RIGHT 2.0

10.5 TO LT. EDGE PAVEMENT

S.L.M. 115+88



PT



O.D.O.T. DISTRICT 2 SURVEY OFFICE

PERSONNEL _____

REFERENCE NO. 12

SHEET 10 OF _____

NOTES 1. Stone

H.C. D. Curtis

DATE 24 Aug. 89

ROUTE US #24

R.C. J. Householder

WEATHER Cloudy

COUNTY Lucas

TEMP. 73°

TOWNSHIP Providence

SECTION 5

T _____ R _____

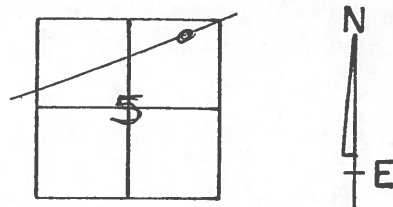
TYPE MONUMENT PK Nail

ON SURFACE - BELOW Surface

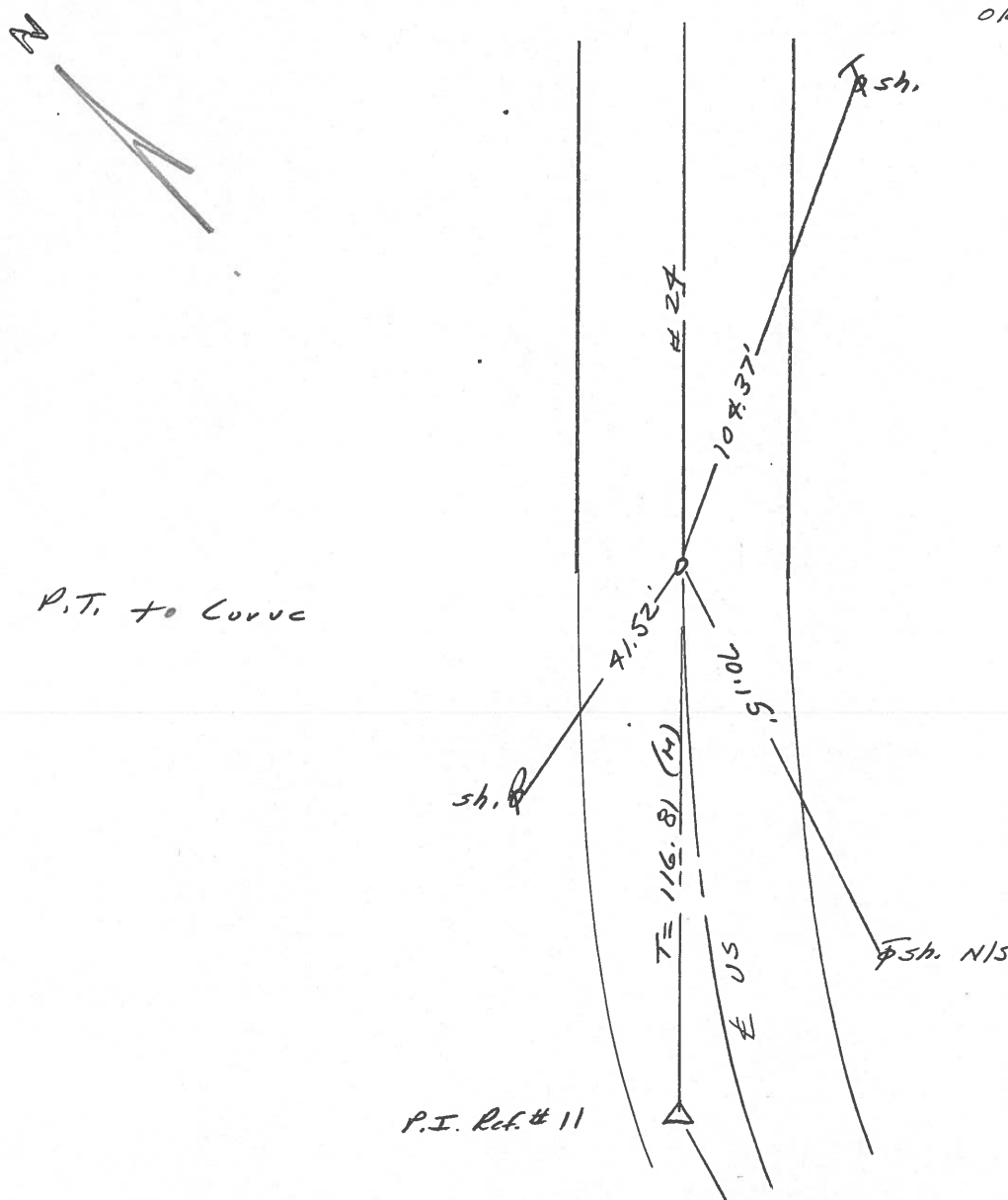
LEFT- & PAV'T. - RIGHT _____

_____ TO _____ EDGE PAVEMENT

S.L.M. 115+81



OK 10/13/89 IRS



Q.D.O.T. DISTRICT 2 SURVEY OFFICE

Sht. 15 of

County Lucas S.R. US #24

Date 24 June 1980

Township Providence

Weather Cloudy

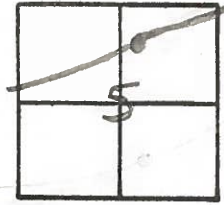
Section 5

Temp. 74°

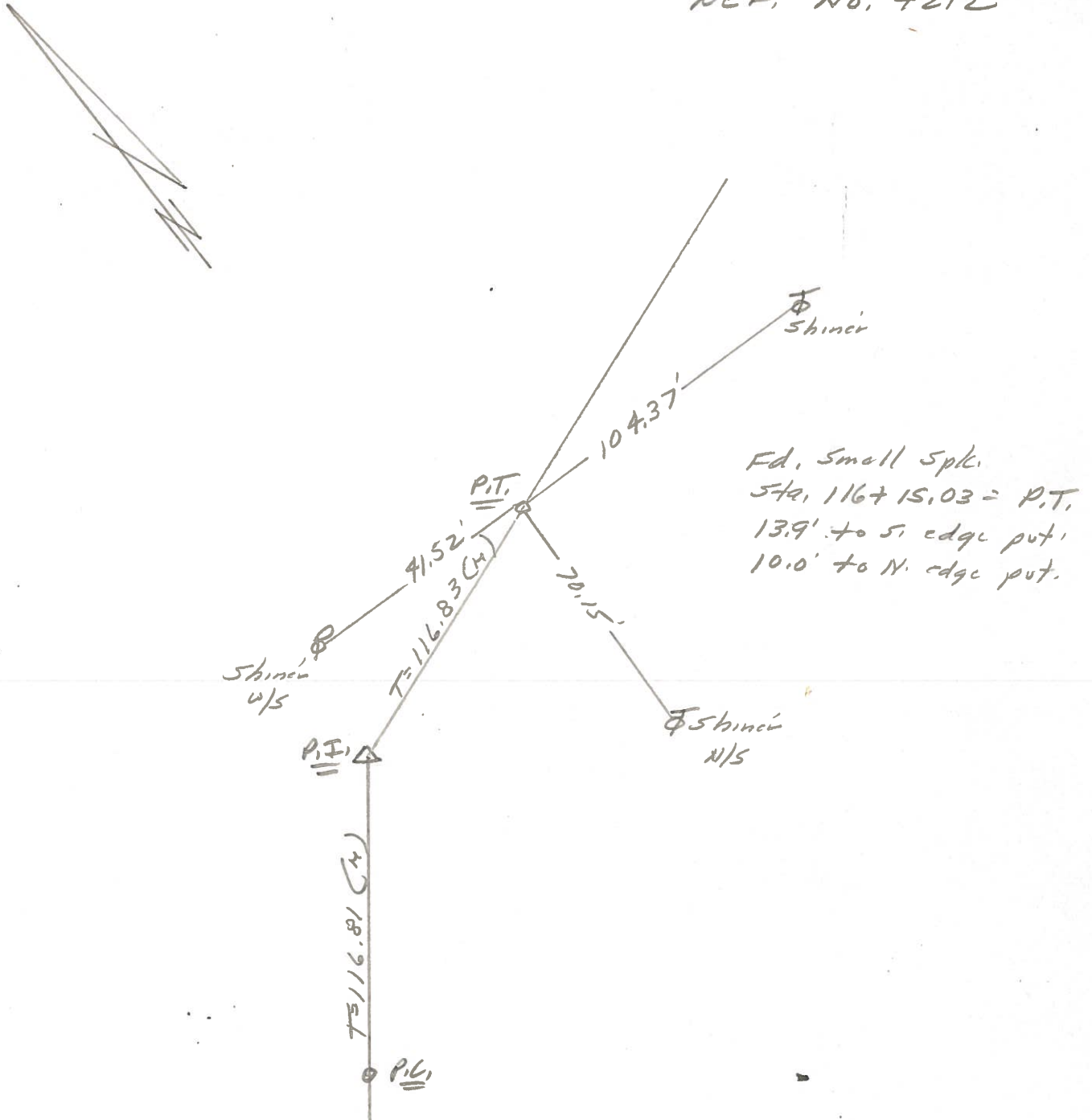
T N, R E

Personnel L. Stone
R. Michalak
P. Neuser
D. Curtis
~~D. Gramata~~

12



REF. NO. 4212



PERSONNEL TITLE PERSONNEL TITLE

W. DENNO

COUNTY LUCAS

DATE JULY 2, 1971

D. CURTIS

S. R. U.S. #24

WEATHER PTLY CLOUDY

D. STEVENS

SEC.

TEMP. 70±

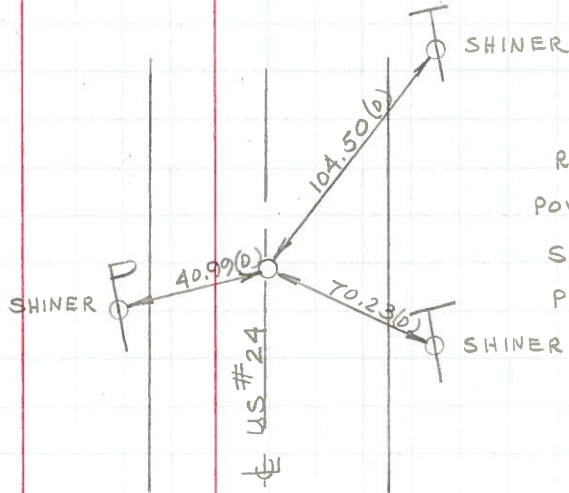
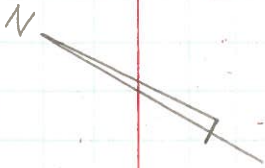
DESCRIPTION REFERENCES TO CONTROL POINTS JOB NO.

LEFT

CENTER LINE

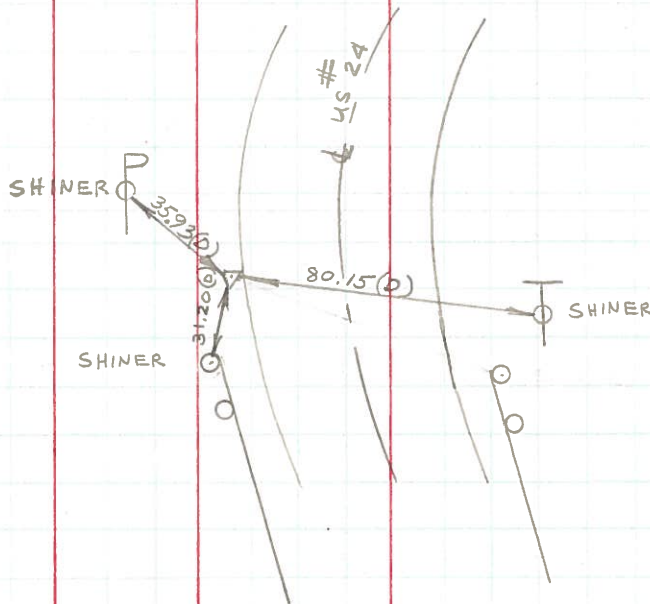
RIGHT

12



RESET CONTROL FROM
POWER POLE AND
S. TELEPHONE POLE
PK NAIL STA 116+15.03
P.T.

13

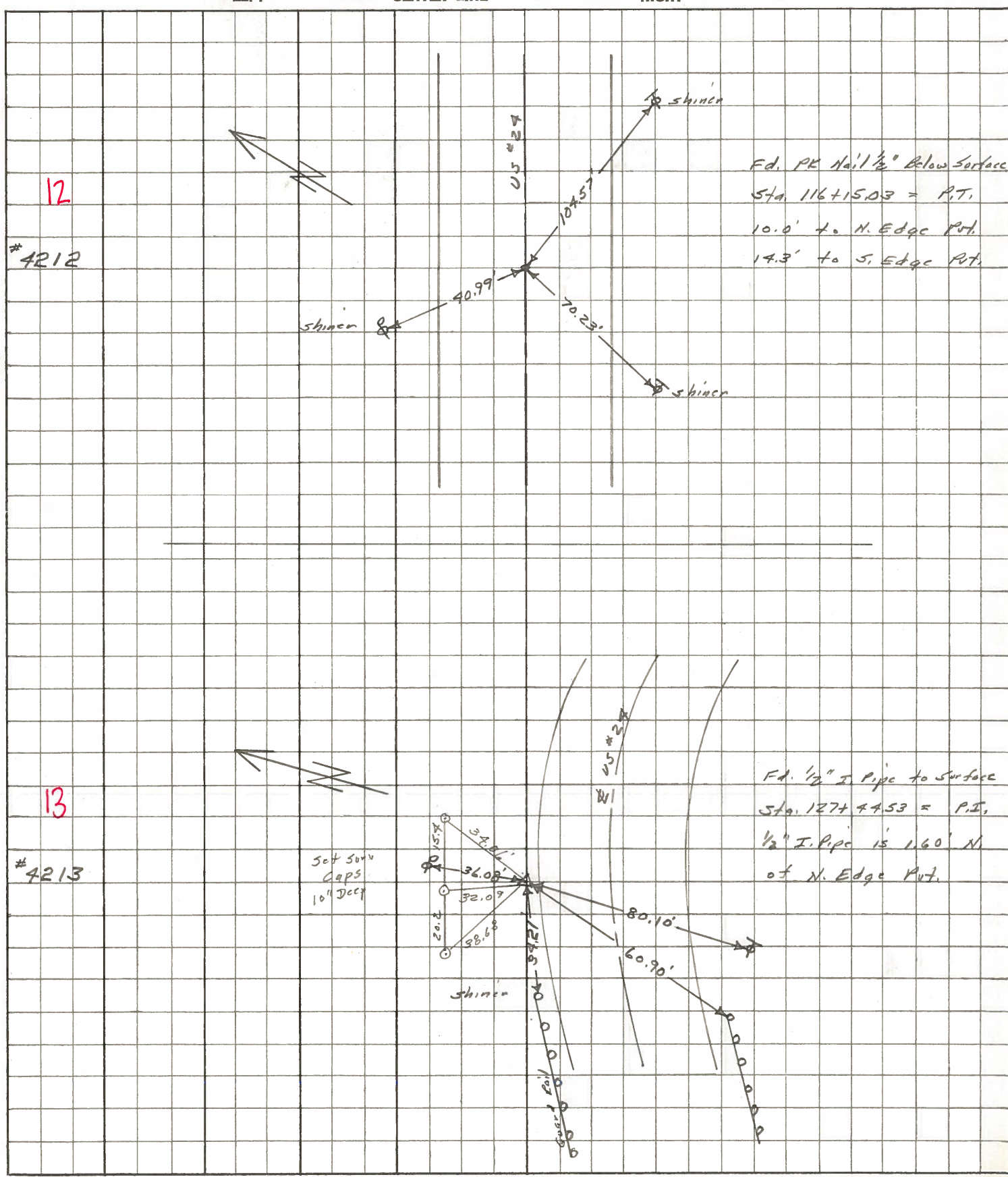


FD. 1/2" I. PIPE 1" BELOW SURFACE
1.60' N. OF N. EDGE PVT.

STA. 127+44.53 = P.I.

PERSONNEL	TITLE	PERSONNEL	TITLE	COUNTY	DATE	WEATHER	TEMP.
Stone	Notes			Lucas	May 68	Fair	
Beck	Flag			#24			
Michalak	Tape						
Schroder	Tape						

DESCRIPTION References to Control Points JOB NO.



PERSONNEL	TITLE	PERSONNEL	TITLE	COUNTY	Lucas	DATE	2 Feb 66
Stone				S. R.	#29	WEATHER	Cool
Beck				SEC.		TEMP.	39°
Schuster							

DESCRIPTION Ref to Control Pts. JOB NO. _____

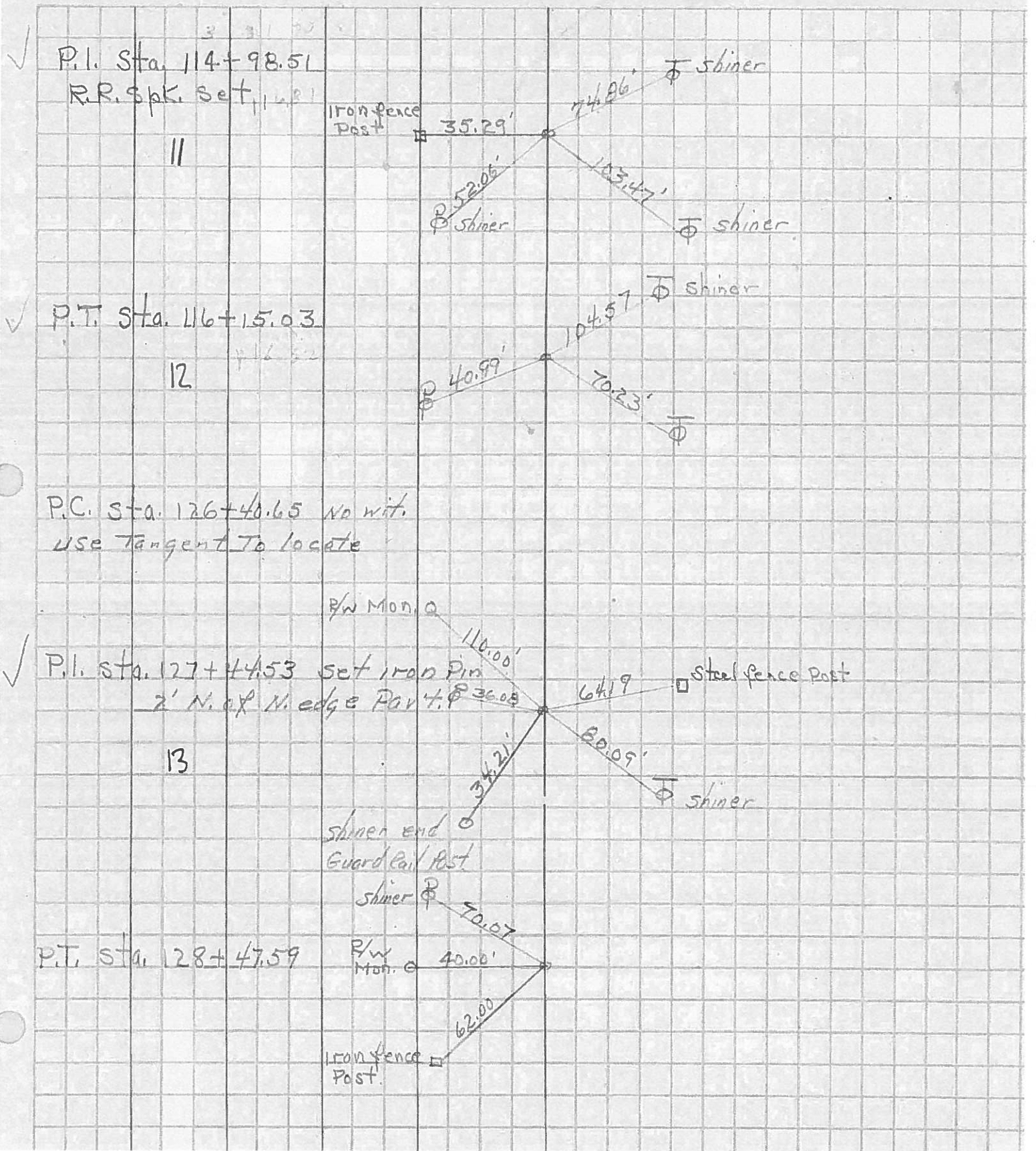
	LEFT	CENTER LINE	RIGHT
79+37.57 = P.T.		48.80'	N.E. To "X" Middle of C.B. (P)
Ed. R.P. Spk.		37.23'	S. To Shiner in T.P. (D)
7 1/2" Below Surface		50.67'	S.W. To Iron Fence Post (P)
96+96.55 = P.C.		50.68'	N.N.E. To Cor. Bldg (D)
Set PK No. 1		71.00'	N.W. To S.W. Cor. Bldg. (D)
8 5/4" Below Surface		52.38'	S.W. To Shiner in T.P. (D)
100+16.30 = Δ		38.76'	N.E. To "t" on N.W. Cor. Walkway (D)
Jeffers & Ludwig Rts.		45.63'	N. To "t" on E. Edge Pump Island (D)
9 Ed. R.P. Spk. to Surface		54.30'	N.W. To "t" on " " " " (D)
113+81.70 = P.C.		88.07'	S.E. To Shiner in T.P. (D)
Set PK No. 1		46.35'	S.E. To Shiner in T.P. (D)
10 To Surface		82.66'	N.W. To Shiner in T.P. (D)
114+98.31 = Δ		103.46'	S.W. To Shiner in T.P. (D)
Ed. R.P. Spk.		74.87'	S.E. To Shiner in T.P. (D)
11 to Surface		51.91'	N.W. To Shiner in T.P. (D)
116+15.03 = P.T.		40.99'	N.W. To Shiner in T.P. (D)
Set PK 1/2"		70.23'	S.W. To Shiner in T.P. (D)
12 Below Surface		107.57'	S.E. To Shiner in T.P. (D)
127+49.53 = Δ		69.17'	S. To Steel Fence Post (D)
Ed. 1/2" I. Pipe		80.09'	S.W. To Shiner in T.P. (D)
13 at Surface		36.08'	N. To Shiner in T.P. (D)
		37.21'	N.W. To Shiner in End Guard Post (D)

PERSONNEL TITLE PERSONNEL TITLE
 Silvester _____

 crew _____

COUNTY Lucas DATE 1958
 S. R. #24 WEATHER _____
 SEC. _____ TEMP. _____

DESCRIPTION LEFT CENTER LINE RIGHT JOB NO.



59 TOLEDO - NIPPOLEA 11

(Fd. 1/24/55) SEE G.F.

239 - STA 0+00 INT JEFFERS (IPON BULL)

45.63 N.Y. TO X IN E. END OF PUM. ISLAND

69.20 S.E. TO SHINER IN T.P.

103.92 N.E. - P.P.

240 STA 14+91⁹⁶ P.I. CURVE Δ = 72°00'00" R

S.H. 51 LUCAS

244 STA 80+59⁹²

Note: For New Sta. & Ties See Survey Notes. C.S. #24 - 0.00 -

245 STA 89+03¹² P.I. CURVE

(Fd. 1/24/55)

246 STA 90+01⁶ & INT MIDWAY RD. (R.R. SPIKE)

4392' NW TO SHINER IN P.P.

65.59' WNW - GUARD RAIL POST

69.89' WSW - - -

40.14' S. TO R/W MON.

66.43' N.E. TO ~~INT~~ TOP

42.33' S.W. TO X ON CO. R.M. # 247 STA 107+35³⁰ P.I. CURVE

60+

243 STA 60+09³⁵ P.I. CURVE

242 STA 40+97⁰⁶ P.I. CURVE Δ = 3° 38' 30"

241 STA 27+82⁵⁴ P.I. CURVE Δ = 12' 25" R OR S
27+86.38

248 STA 116+02⁹ P.I. CURVE