

# O.D.O.T. DISTRICT 2 SURVEY OFFICE

PERSONNEL

REFERENCE NO. 13

SHEET 17 OF 68

NOTES S. HUSS

H.C. B. VAN DUSEN

R.C. S. HUSS

DATE 5-28-97

WEATHER PARTLY CLOUDY / WINDY

TEMP. 76.1° F

ROUTE US-24

COUNTY Lucas

TOWNSHIP Providence

SECTION 5

T 5 N R 9 E

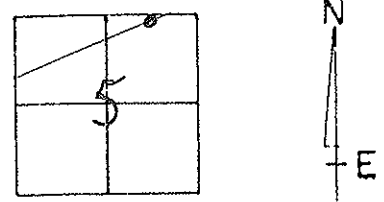
TYPE MONUMENT PK & WASHER

ON SURFACE - BELOW ON SURFACE

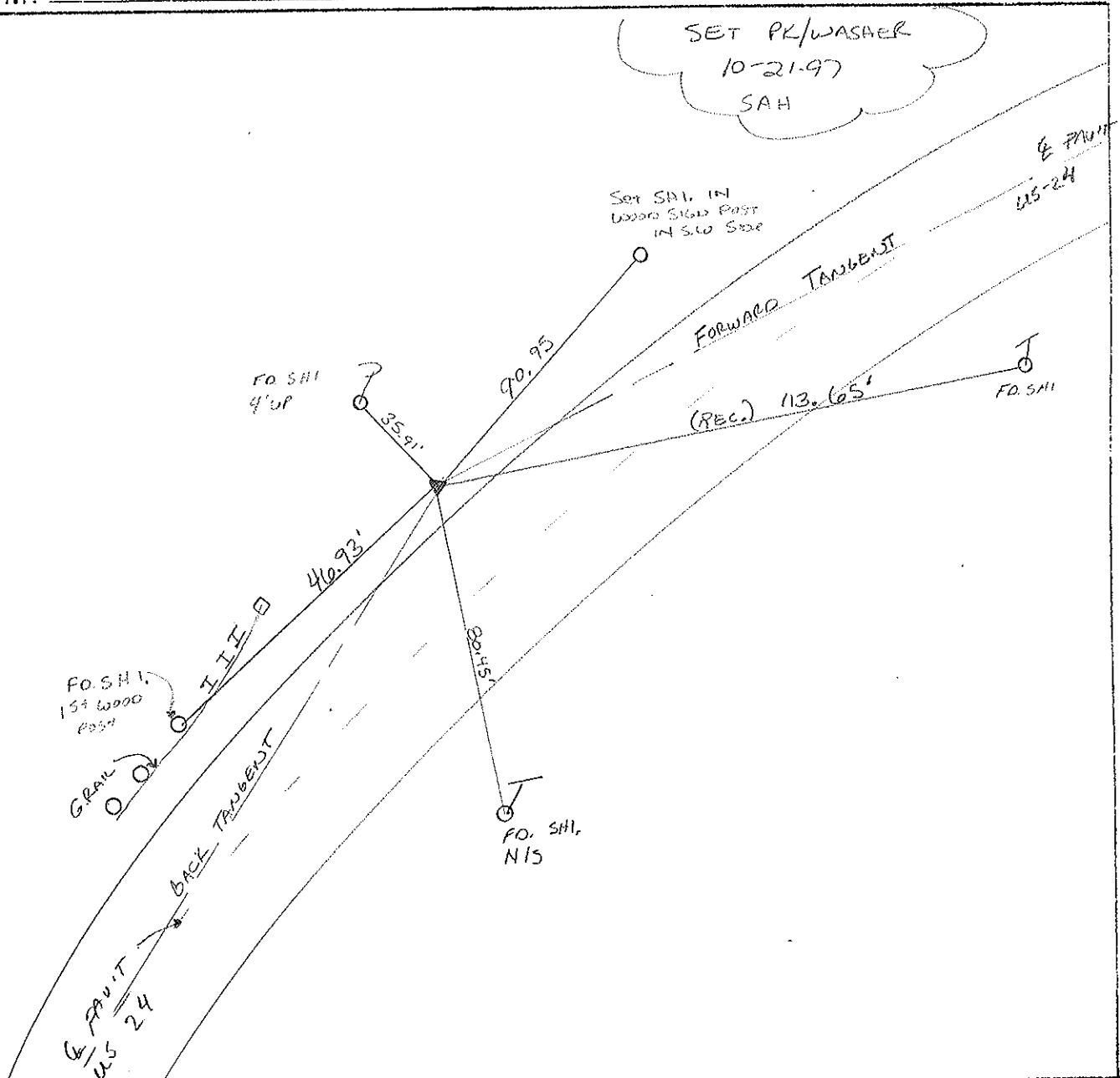
LEFT - C PAV'T. - RIGHT 14.2'

2.3' TO LT. EDGE PAVEMENT

S.L.M. 127 + 44



SET PK/WASHER  
 10-21-97  
 SAH



# O.D.O.T. DISTRICT 2 SURVEY OFFICE

PERSONNEL

REFERENCE NO. 13

SHEET 11 OF     

NOTES LOEHRKE

H.C. MOSER

R.C. SHOWAK

DATE 10-7-94

WEATHER Sunny

TEMP. +65

Set P.K. / WASHER  
5-15-95

ROUTE US #24

COUNTY LUCAS

TOWNSHIP Providence

SECTION 5

T. 5 N. R. 9 E.

TYPE MONUMENT lg R.R. SPIKE

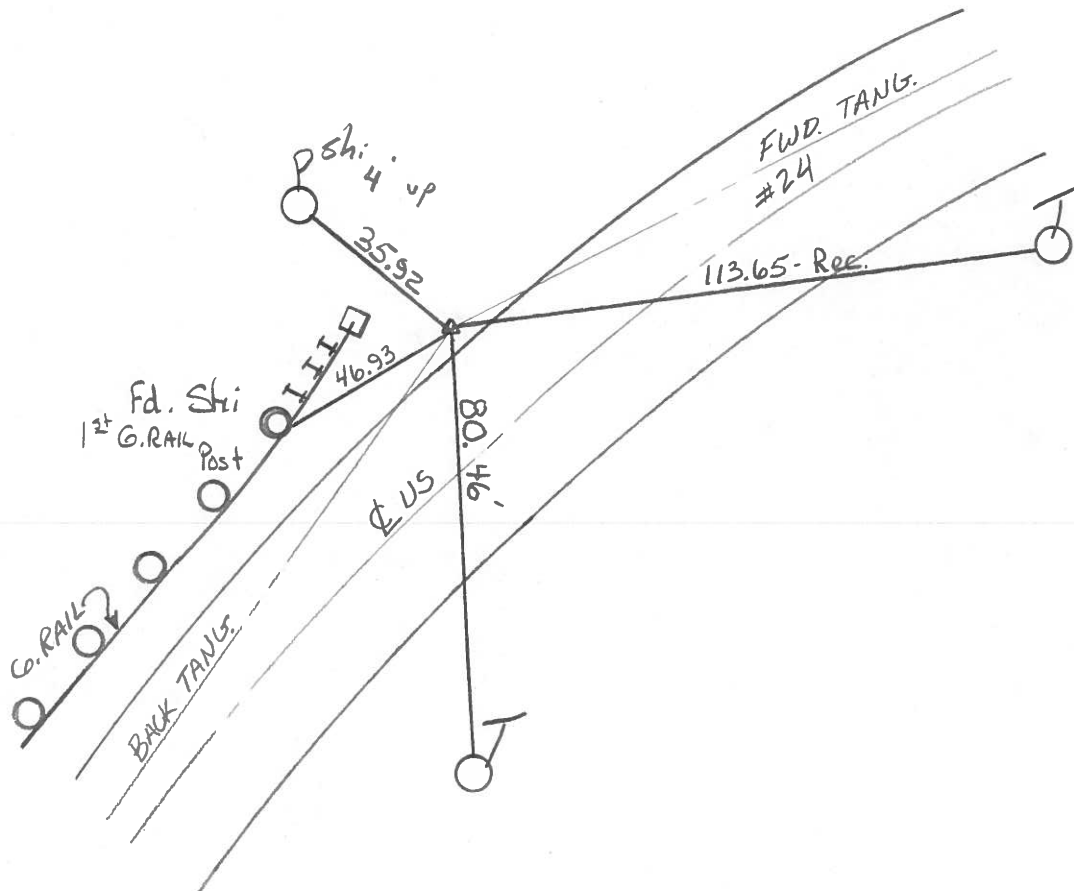
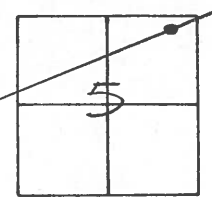
ON SURFACE - ~~BELOW~~ YES

LEFT-~~C~~ PAV'T. - ~~RIGHT~~ 14.7'

2.9 TO Lt EDGE PAVEMENT

S.L.M. 127+13

C.L.



# O.D.O.T. DISTRICT 2 SURVEY OFFICE

PERSONNEL \_\_\_\_\_

REFERENCE NO. 13

SHEET 11 OF \_\_\_\_\_

NOTES 1. Stone

H.C. J. Hooschilder

DATE 28 Aug. 89

ROUTE US # 24

R.C. \_\_\_\_\_

WEATHER Fair

COUNTY Lucas

\_\_\_\_\_

TEMP. 77°

TOWNSHIP Providence

\_\_\_\_\_

SECTION 5

T \_\_\_\_\_ R \_\_\_\_\_

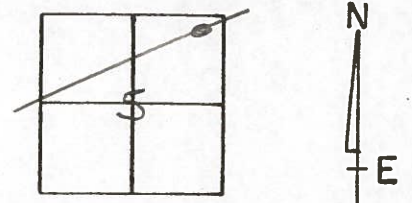
TYPE MONUMENT 1/2" I. pipe

ON SURFACE - BELOW 5" deep

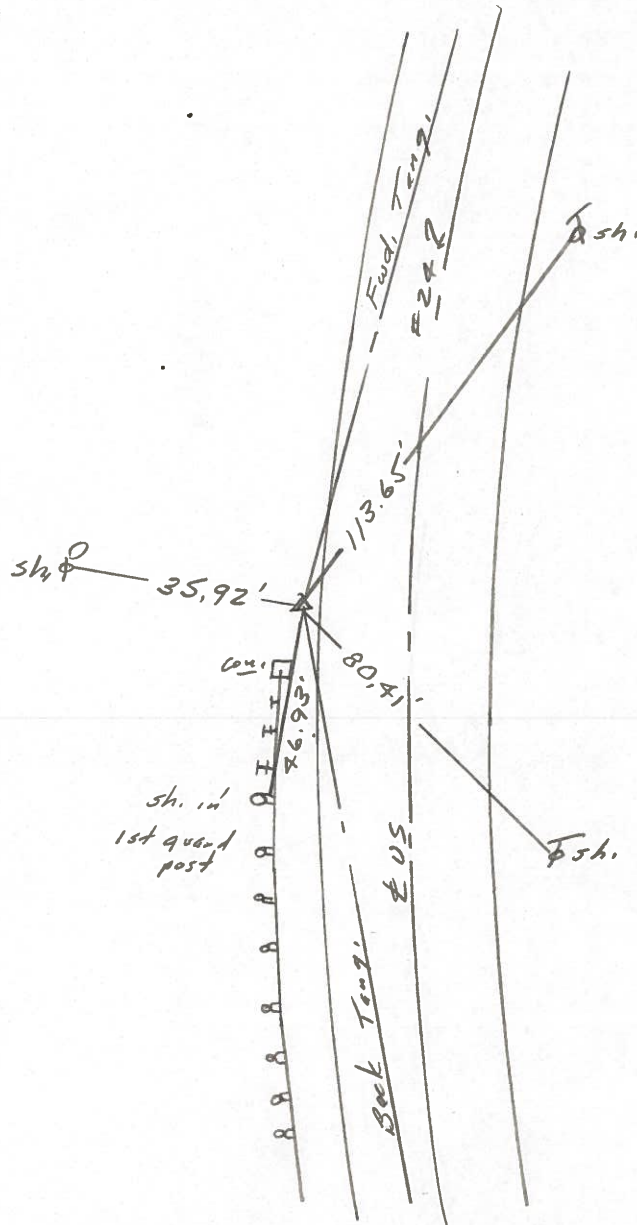
LEFT- & PAW'T. - RIGHT \_\_\_\_\_

TO \_\_\_\_\_ EDGE PAVEMENT

S.L.M. 127+09



Set RR Spk. 10/13/89  
IRS



O.D.O.T. DISTRICT 2 SURVEY OFFICE

Sht. 16 of

County Lucas S.R. US #24

Date 25 June 1980

Township Providence

Weather Fair

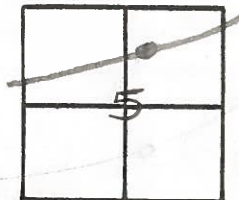
Section 5

Temp. 72°

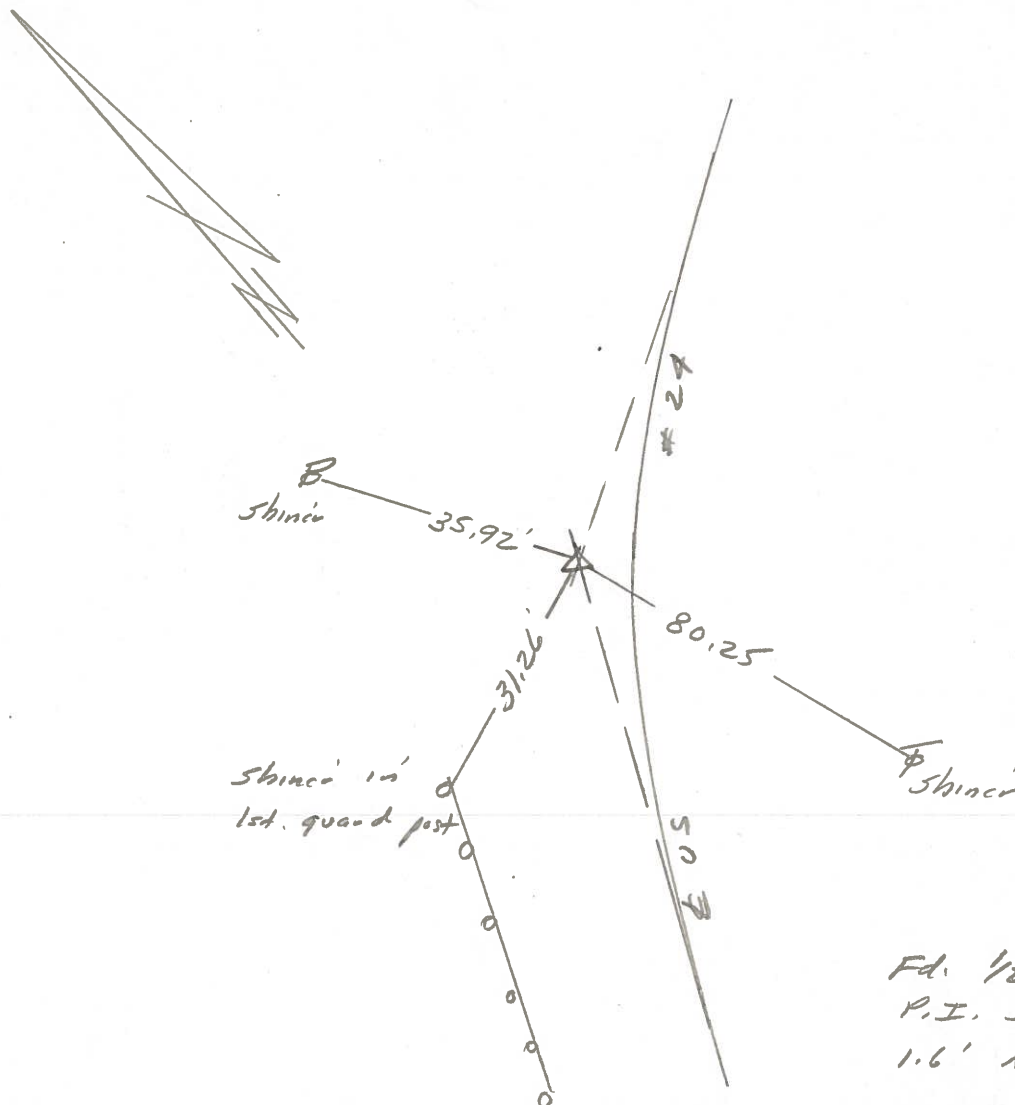
T N, R E

Personnel L. Stone  
R. Michalak  
P. Heuser  
D. Curtis  
D. Evonetz

13



REF. NO. 4213



Fd. 1/2" Iron pipe in' bench  
 P.I. Sta. 127+44.53  
 1.6' N. of N. edge post.

PERSONNEL	TITLE	PERSONNEL	TITLE
W. DENNO			
D. CURTIS			
D. STEVENS			

COUNTY LUCAS

DATE JULY 2, 1971

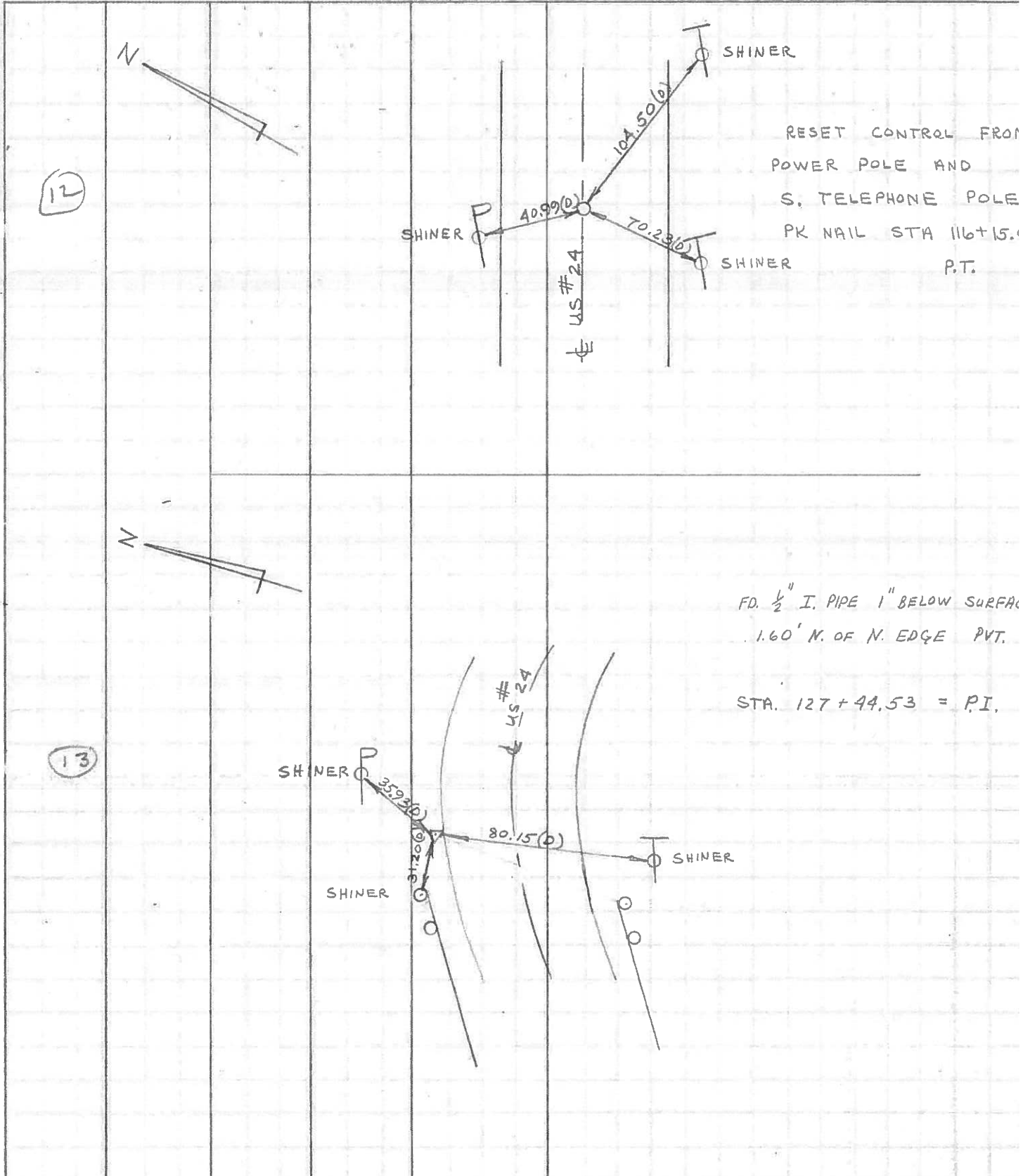
S. R. U.S. #24

WEATHER PTLY CLOUD

SEC. \_\_\_\_\_

TEMP. 70 ±

DESCRIPTION \_\_\_\_\_ REFERENCES \_\_\_\_\_ TO CONTROL POINTS \_\_\_\_\_ JOB NO. \_\_\_\_\_  
LEFT CENTER LINE RIGHT



RESET CONTROL FROM  
 POWER POLE AND  
 S. TELEPHONE POLE  
 PK NAIL STA 116+15.1  
 P.T.

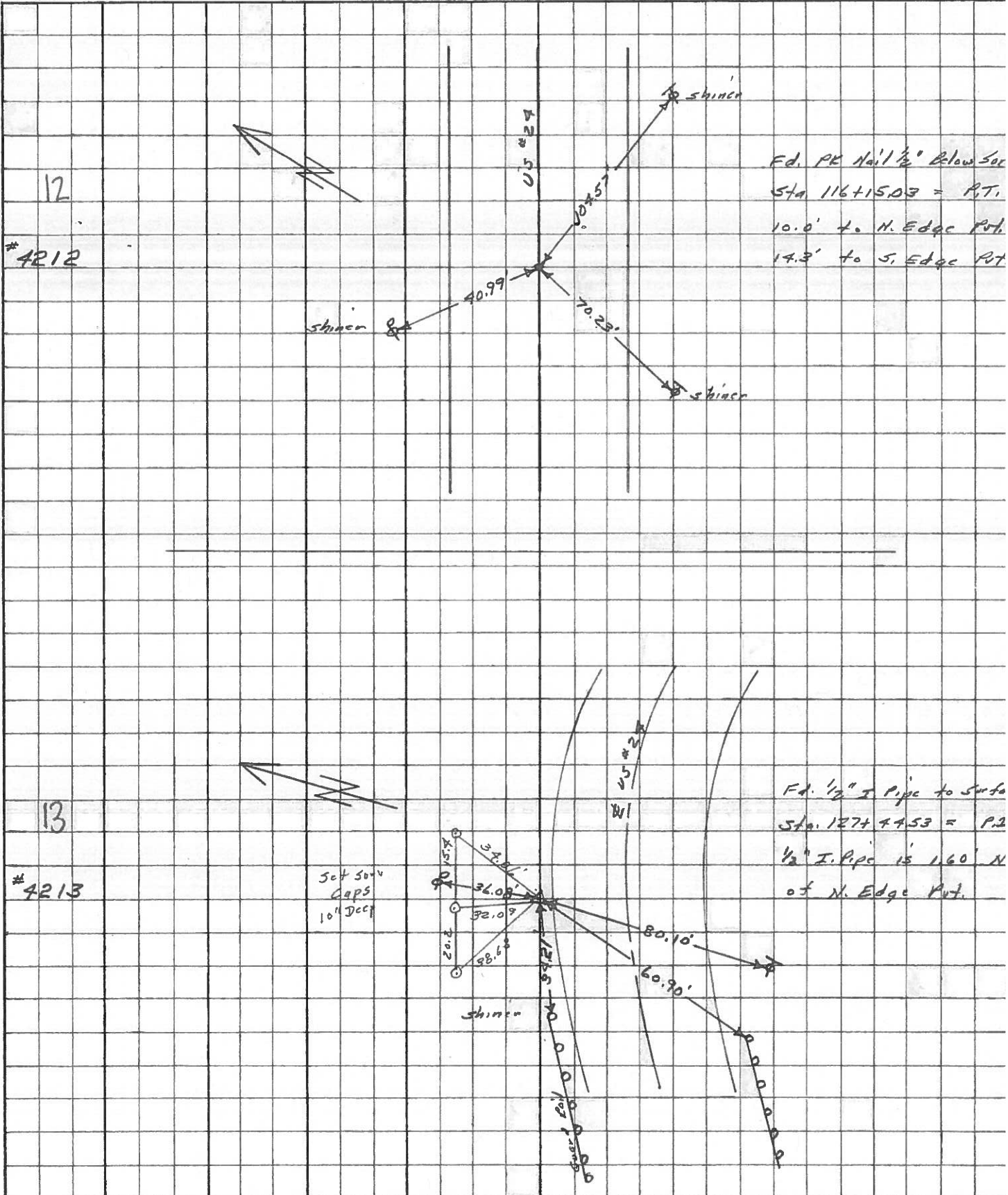
FD. 1/2" I. PIPE 1" BELOW SURFACE  
 .160' N. OF N. EDGE PVT.

STA. 127+44.53 = P.I.

PERSONNEL	TITLE	PERSONNEL	TITLE	COUNTY	DATE	WEATHER	TEMP.
Stone	Notes			Lucas	May 68	Fair	
Beck	Flag			#24			
Michalak	Tape						
Schroder	Tape						

DESCRIPTION References to Control Points JOB NO. \_\_\_\_\_

LEFT CENTER LINE RIGHT

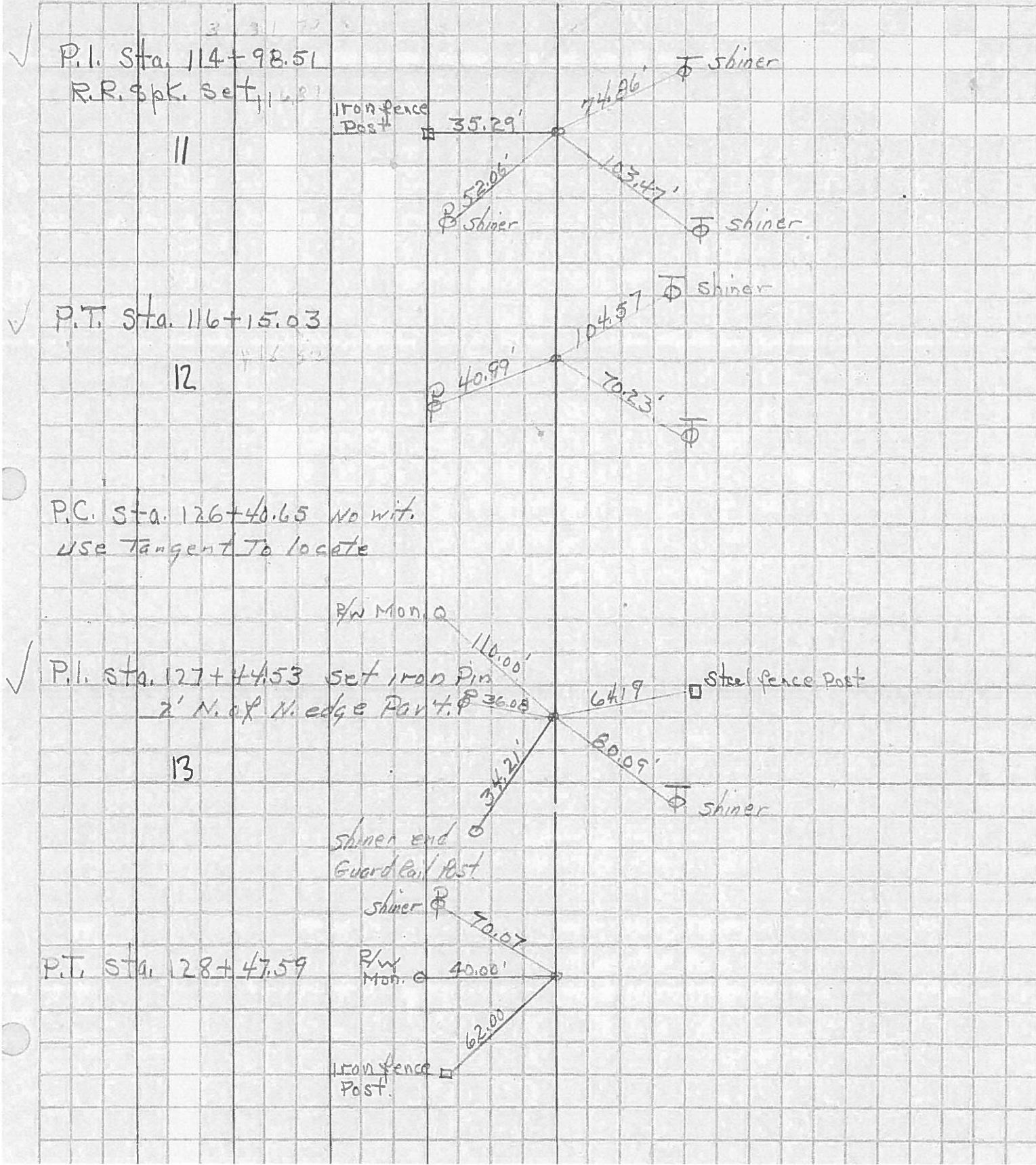




PERSONNEL TITLE PERSONNEL TITLE  
 Silvester \_\_\_\_\_  
 & \_\_\_\_\_  
 crew \_\_\_\_\_  
 \_\_\_\_\_

COUNTY Lucas DATE 1958  
 S. R. #24 WEATHER \_\_\_\_\_  
 SEC \_\_\_\_\_ TEMP \_\_\_\_\_

DESCRIPTION LEFT CENTER LINE RIGHT JOB NO.





PERSONNEL	TITLE	PERSONNEL	TITLE	COUNTY	DATE	WEATHER	TEMP.
Mennitt				Lucas	9-25-51		
Jackson				S. R. Luc. 24			
Gulyas				SEC.			
DESCRIPTION Mon. Ref.				JOB NO.			

