

# O.D.O.T. DISTRICT 2 SURVEY OFFICE

PERSONNEL \_\_\_\_\_

REFERENCE NO. 14

SHEET 18 OF 68

NOTES S. HOSS

H.C. B. VAN DYKE

DATE 5-28-97

ROUTE US-24

R.C. K. MOSER

WEATHER PARTLY CLOUDY / WINDY

COUNTY Lucas

TEMP. +61°F

TOWNSHIP Providence

SECTION 5

T. 5 N. R. 9 E.

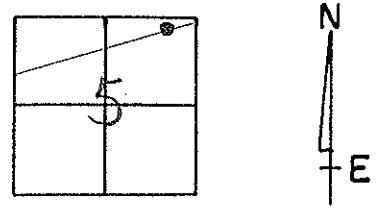
TYPE MONUMENT PK NAIL & WASHER

ON SURFACE - BELOW ON SURFACE

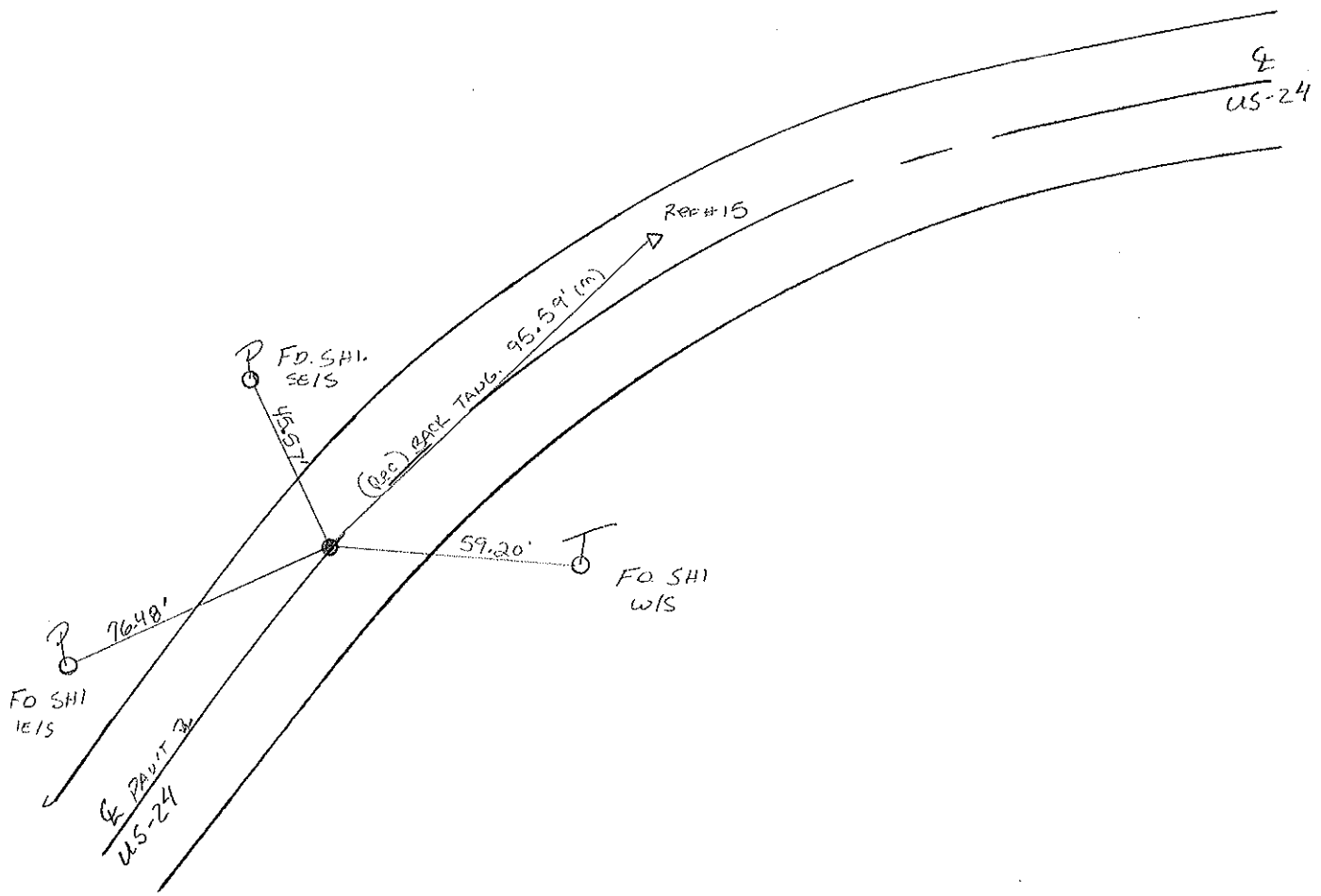
LEFT - ☉ PAV'T. - RIGHT 1.0' LT

11.0' TO LT. EDGE PAVEMENT

S.L.M. 140+31



SET PK / WASHER  
 10-21-97  
 SAH



# O.D.O.T. DISTRICT 2 SURVEY OFFICE

PERSONNEL

REFERENCE NO. 14

SHEET 12 OF     

NOTES VAN DUSEN

H.C. K. MOSER

R.C. R. SLOVAK

S. HERMILLER P

DATE 10-7-94

WEATHER CLEAR

TEMP. +60° F

Set P.K./WASHER

5-15-95

C.L.

ROUTE US #24

COUNTY LUCAS

TOWNSHIP Providence

SECTION 5

T.5 NR 9 E

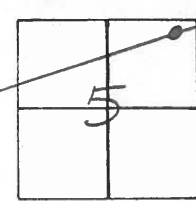
TYPE MONUMENT PK NAIL

ON SURFACE - ~~BELOW~~ ON SURFACE

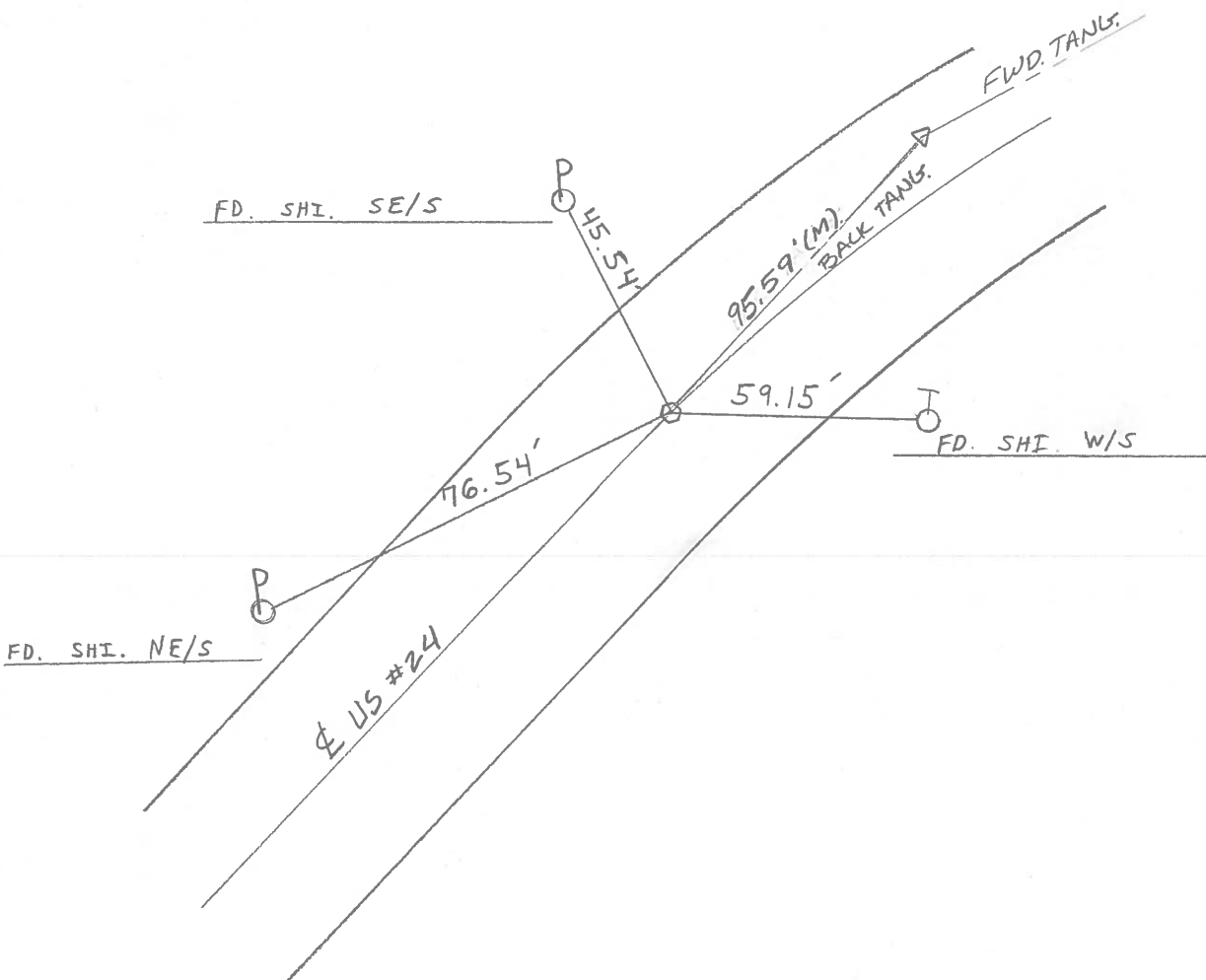
LEFT - ~~C. PAV'T. - RIGHT~~ 1.3' LT &

10.9 TO LT EDGE PAVEMENT

S.L.M. 139 + 90



P1 REF # 15





O.D.O.T. DISTRICT 2 SURVEY OFFICE

Sht. 17 of

County Lucas S.R. US #24

Date 29 July 1980

Township Providence

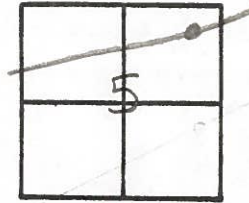
Weather Fair

Section 5

Temp. 79°

T N, R E

Personnel I. Stone



R. Michalak

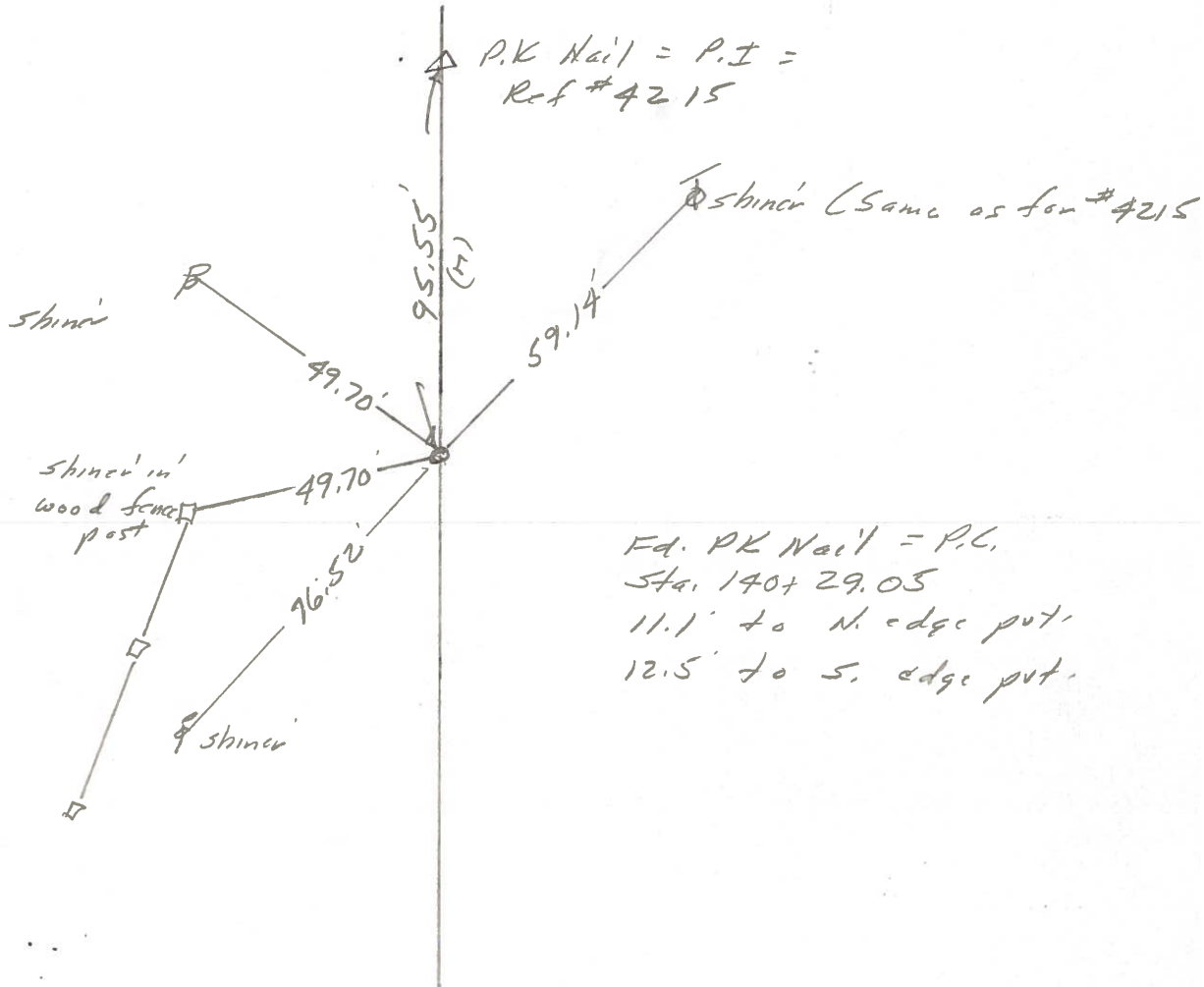
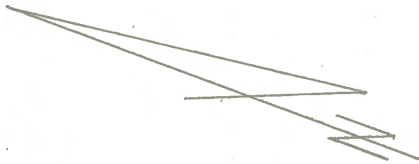
P. Neuser

D. Curtis

~~D. Granata~~

14

REF. NO. 4214

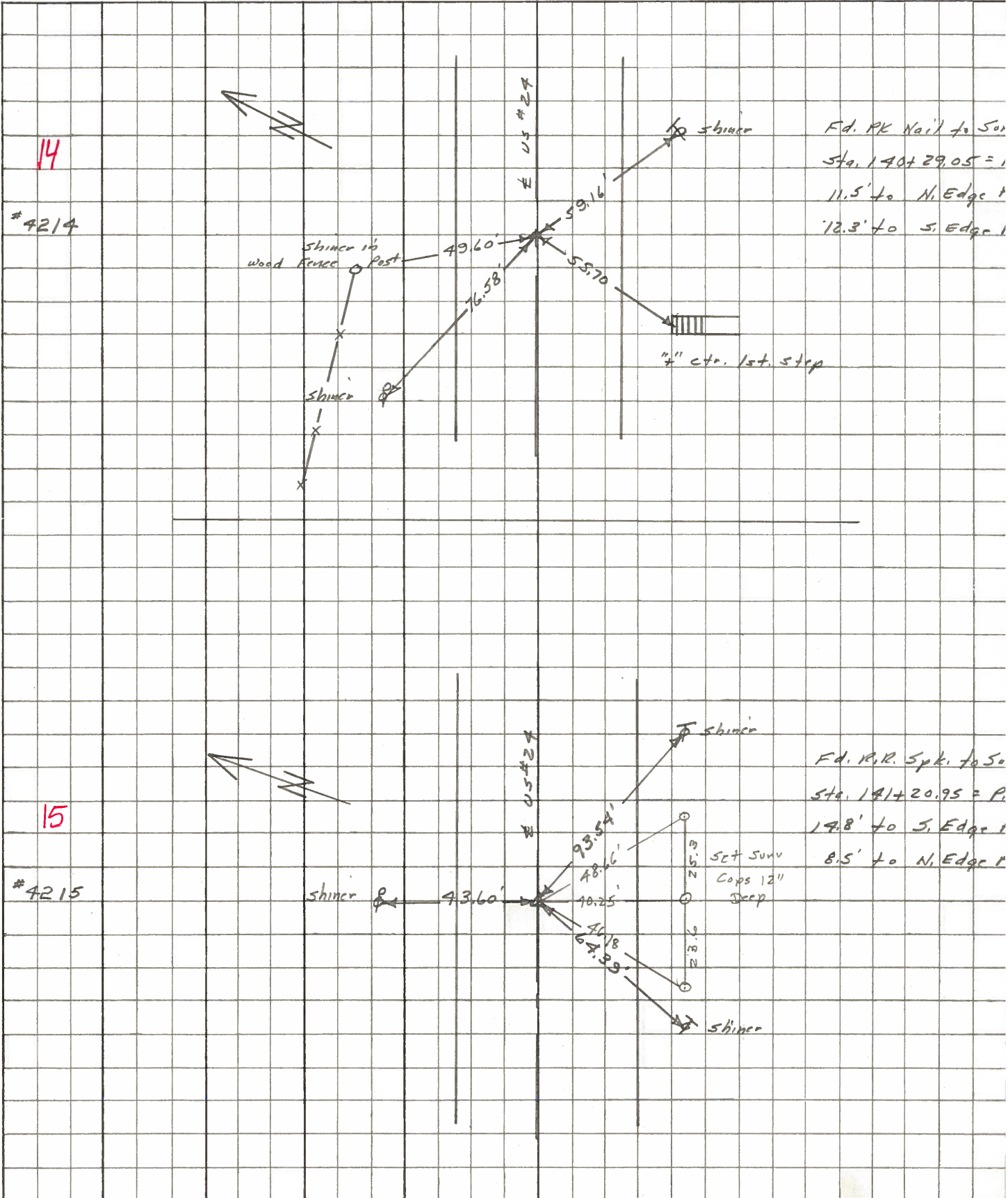




PERSONNEL	TITLE	PERSONNEL	TITLE	COUNTY	DATE	WEATHER	TEMP.
Stone	Notes			Lucas	May 68	Fair	
Beck	Flag			S. R. # 24			
Michalak	Tape						
Schroder	Tape						

DESCRIPTION References to Control Pts. JOB NO.

LEFT CENTER LINE RIGHT





PERSONNEL \_\_\_\_\_ TITLE \_\_\_\_\_ PERSONNEL \_\_\_\_\_ TITLE \_\_\_\_\_  
 COUNTY Lucas DATE 3 Feb. 66  
 S. R. #24 WEATHER Cool  
 SEC. \_\_\_\_\_ TEMP. 24°

DESCRIPTION \_\_\_\_\_ *control Points* \_\_\_\_\_ JOB NO. \_\_\_\_\_  
 LEFT \_\_\_\_\_ CENTER LINE \_\_\_\_\_ RIGHT \_\_\_\_\_

DESCRIPTION	LEFT	CENTER LINE	RIGHT
✓ 140+29.05 = P.C. 14 Set PK Nail To Surface		76.58' 9.16' 55.70'	N.W. To Shiner in P.P. (D) S.E. To Shiner in T.P. (D) S.W. To "4" in str Bottom Step (D)
✓ 141+20.95 - Δ 15 Ed. R.R. Spt. To Surface		43.60' <del>88.52</del> <del>73.54</del> 64.39'	N. To Shiner in P.P. (D) S.E. To Shiner in <sup>12" Ash</sup> T.P. (D) S.W. To Shiner in T.P. (D)
✓ 142+19.89 - P.T. 16 Set PK Nail To Surface		95.97' 91.60' 42.12'	N.E. To Shiner in P.P. (D) S.E. To Shiner in T.P. (D) S.W. To Shiner in T.P. (D)
✓ 147+23.15 = P.I. (Hartman Rd.) 17 Ed. R.R. Spt. To Surface		54.44 <del>51.52</del> 75.79' 72.09' 97.15'	N.E. To Shiner in P.P. (D) N.W. To Shiner in P.P. (D) S.W. To Shiner in T.P. (D) S.E. " " " " (D)
✓ 159+29.83 = P.C. 18 Set PK Nail To Surface		78.28' 40.15 71.18	N.E. To Shiner in 20" Ash (D) N. To R/W Monument (D) S.W. To Shiner in P.P. (D)
✓ 160+36.97 = P.I. 19 Ed. R.R. Spt. To Surface		75.93' 65.63' 62.34' 38.54'	N.E. To Shiner in T.P. (D) N. To S.W. Cor. Res. (1st. Blk) (D) N.W. To Shiner in 20" Ash (D) S.W. To Shiner in P.P. (D)
✓ 180+64.40 = P.I. 20 Ed. R.R. Spt. To Surface		41.19' 42.55' 76.88'	N.E. To Shiner in 8" Apple (P) N.W. To Shiner in P.P. (P) S.E. To Shiner in T.P. (P)

PERSONNEL	TITLE	PERSONNEL	TITLE	COUNTY	DATE
Silvester				Lucas	1958
#				#24	WEATHER
Crew				SEC. He-Luc.-Water	TEMP.

DESCRIPTION	LEFT	CENTER LINE	RIGHT	JOB NO.
✓ P.C. Sta. 140+29.05 14				
✓ P.I. Sta. 141+20.95 R.R. Spk. Set 15				
✓ P.T. Sta. 142+19.89 16				
✓ P.I. Sta. 147+23.15 (Hartman Rd) R.R. Spk. Set (old & New P.I.) 17				
✓ P.C. Sta. 159+29.83 18				