

O.D.O.T. DISTRICT 2 SURVEY OFFICE

PERSONNEL \_\_\_\_\_

REFERENCE NO. 15

SHEET 19 OF 68

NOTES S. HUSS

H.C. B. VAN DUSEN

DATE 5-28-97

ROUTE US-24

R.C. K. MOSEL

WEATHER Partly Cloudy / Windy

COUNTY Lucas

TEMP. +61°F

TOWNSHIP Providence

SECTION 5

T 5 N R 9 E

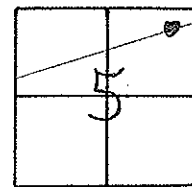
TYPE MONUMENT PK WASHER

ON SURFACE - BELOW ON SURFACE

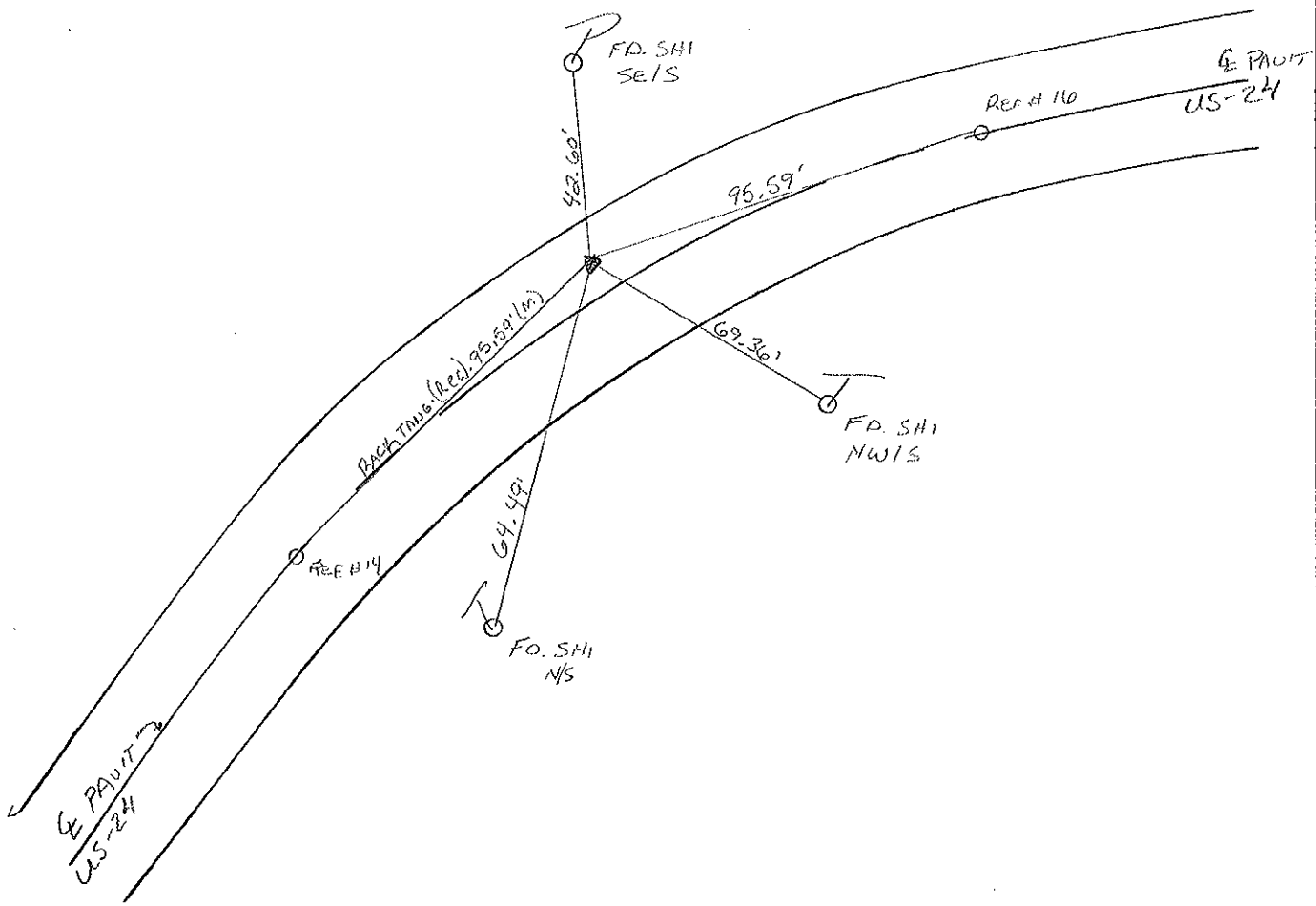
LEFT - C PAV'T. - RIGHT 3.9' Lt.

B.O. TO LT. EDGE PAVEMENT

S.L.M. 141 + 27



SET PK/WASHER  
10-21-97  
SAH



O.D.O.T. DISTRICT 2 SURVEY OFFICE

PERSONNEL

REFERENCE NO. 15

SHEET 13 OF     

NOTES VAN DUSEN

H.C. MOSEK

R.C. SLOVAK

HERMILLER P

DATE 10-7-94

WEATHER SUNNY

TEMP. + 70° F

ROUTE US #24

COUNTY LUCAS

TOWNSHIP Providence

SECTION 5

T 5 N R 9 E

Set P.K. / WASHER  
5-15-95  
C.L.

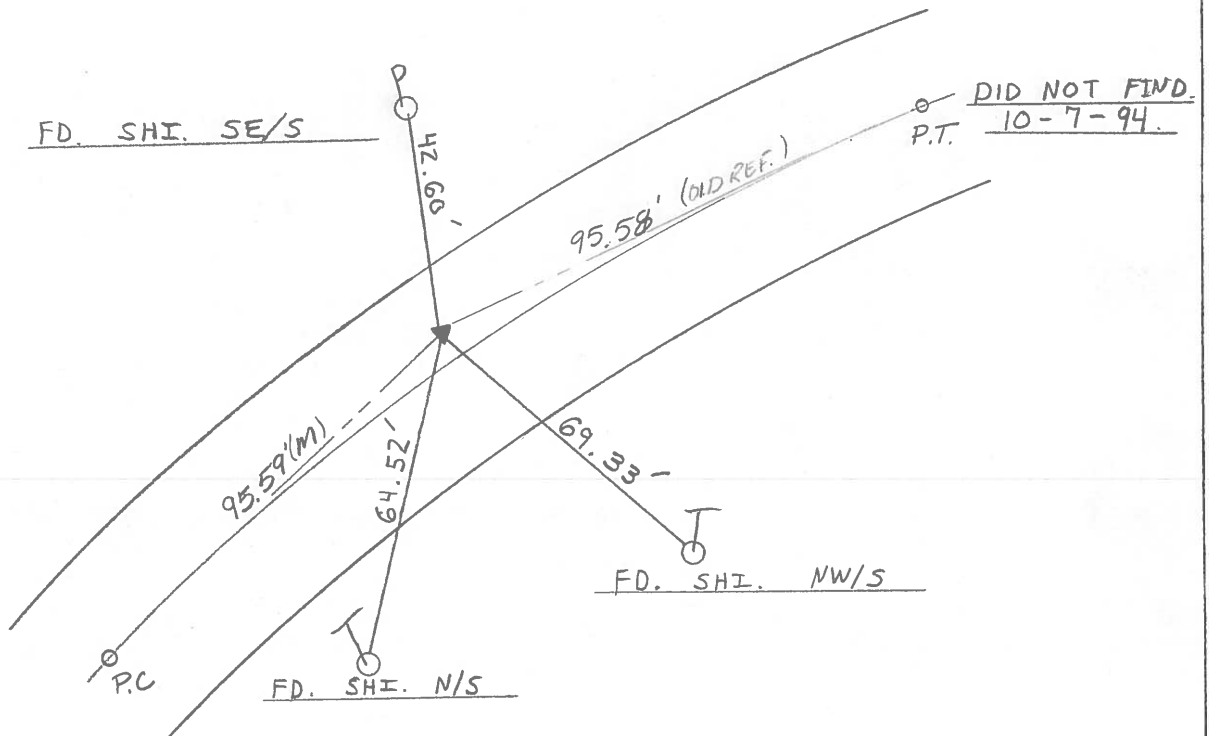
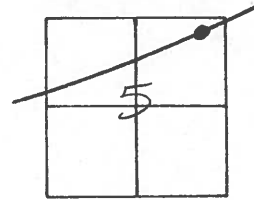
TYPE MONUMENT PK NAIL

ON SURFACE - ~~BELOW~~ ON SURFACE

LEFT - ~~C~~ PAN'T. - RIGHT 4.0 LT C

7.6 TO LT. EDGE PAVEMENT

S.L.M. 140 + 84



# O.D.O.T. DISTRICT 2 SURVEY OFFICE

PERSONNEL \_\_\_\_\_

REFERENCE NO. 15

SHEET 13 OF \_\_\_\_\_

NOTES 1. Stone

H.C. J. Householder

R.C. \_\_\_\_\_

DATE 28 Aug. 89

WEATHER Fair

TEMP. 78°

ROUTE US # 24

COUNTY Lucas

TOWNSHIP Providence

SECTION 5

T. \_\_\_\_\_ R. \_\_\_\_\_

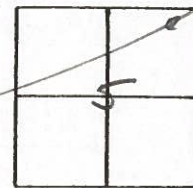
TYPE MONUMENT PK Nail

ON SURFACE - BELOW 2" deep

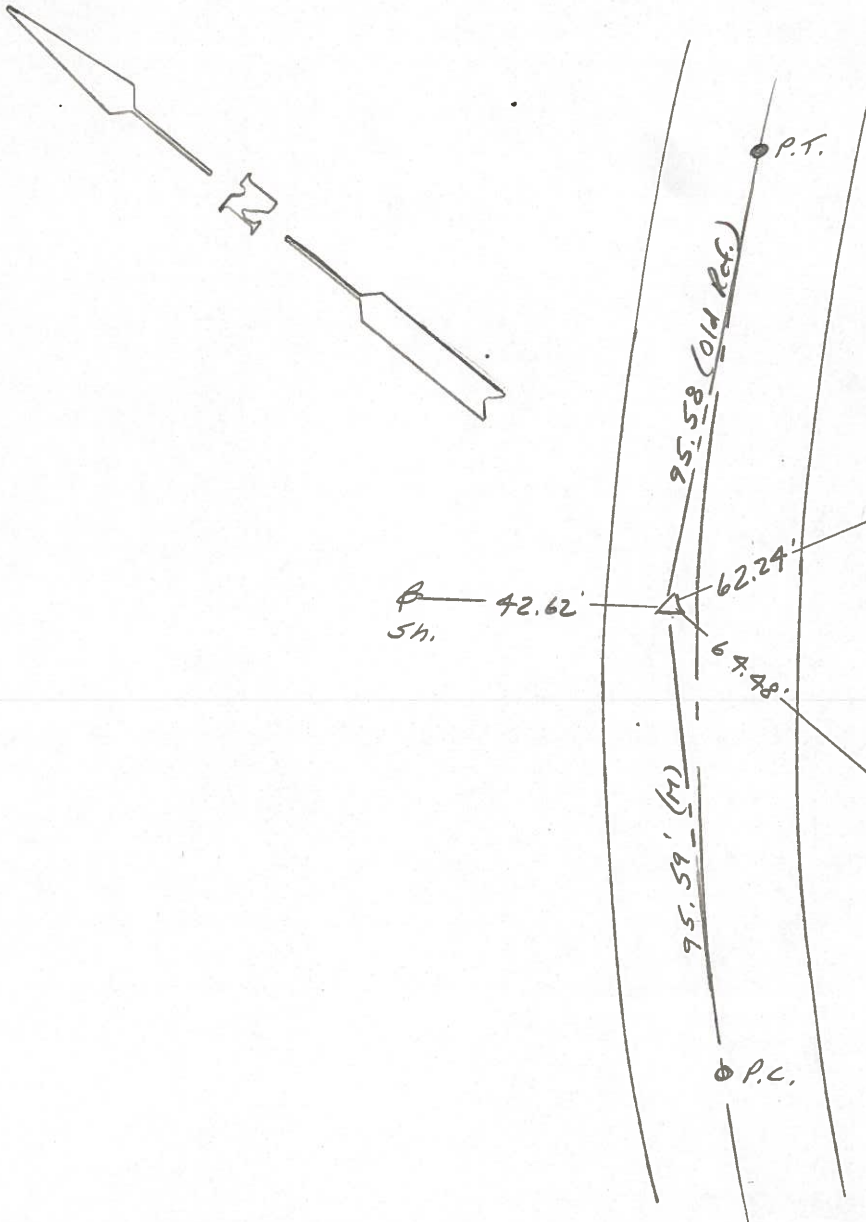
LEFT -  $\odot$  PAV'T. - RIGHT \_\_\_\_\_

\_\_\_\_\_ JO \_\_\_\_\_ EDGE PAVEMENT

S.L.M. 170+88



OK 10/13/89 IRS



NOTE: Could not locate P.T. Refs. do not check. PK Nail lost in const. (Ref. #16)

Q.D.O.T. DISTRICT 2 SURVEY OFFICE

Sht. 18 of     

County Lucas S.R. US #24

Township Providence

Section 5

T N, R E

Personnel L. Stone

R. Michalak

P. Neuser

D. Curtis

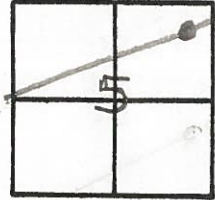
D. Granata

15

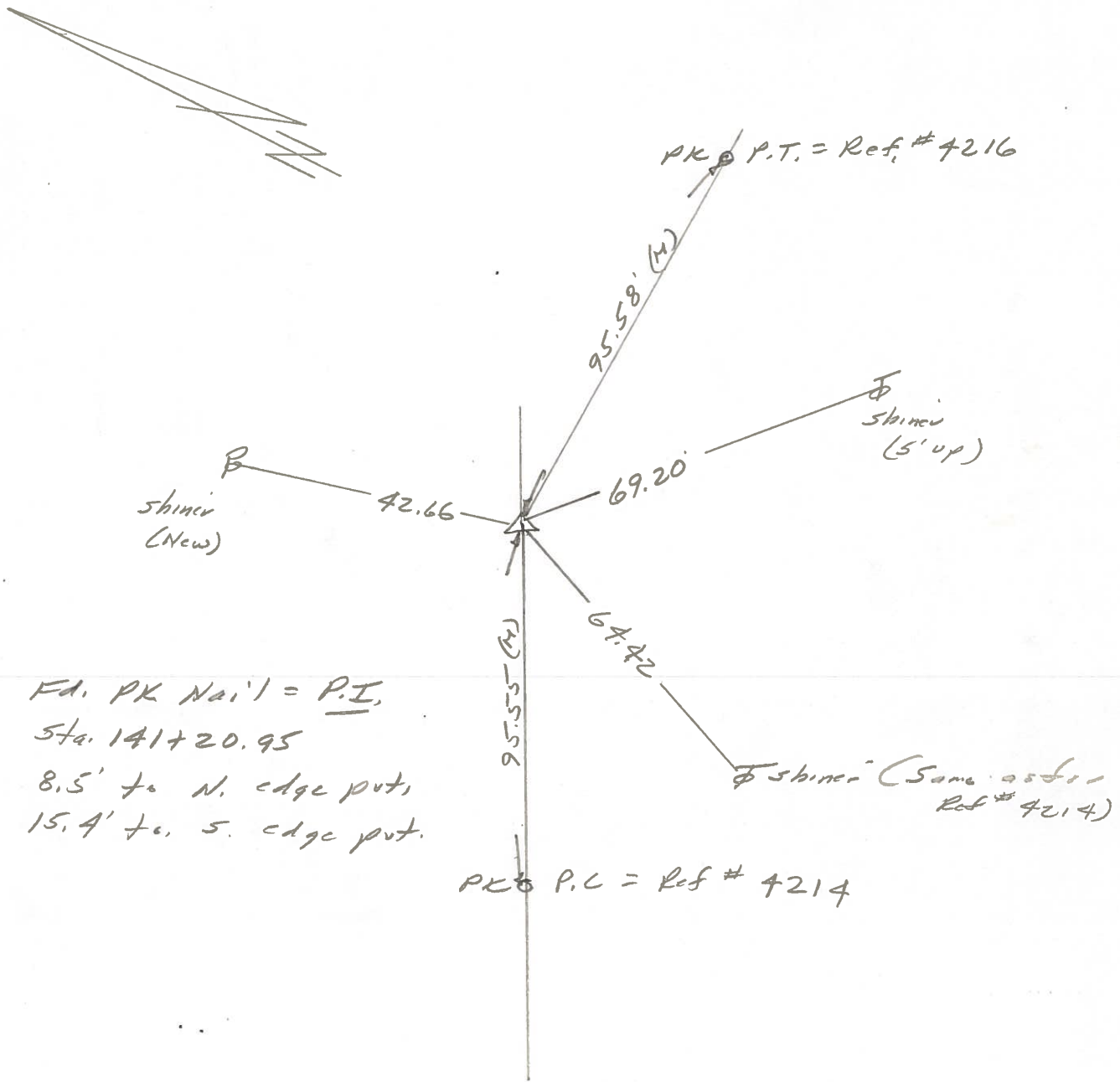
Date 29 July 1980

Weather Fair

Temp. 79°



REF. NO. 4215



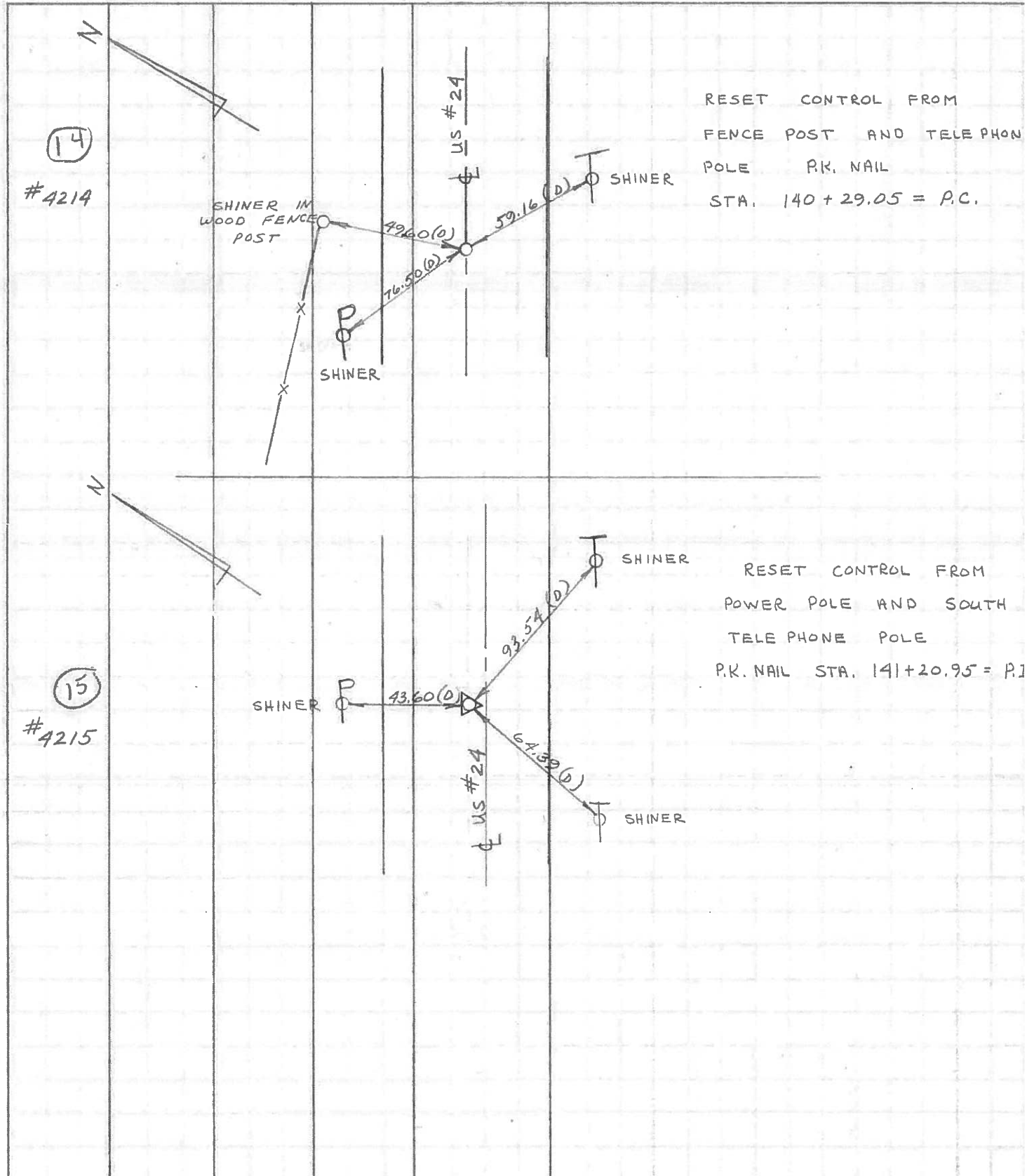
Fd. PK Nail = P.I.  
Sta. 141+20.95  
8.5' to N. edge put,  
15.4' to S. edge put.

PK P.C. = Ref # 4214

PERSONNEL	TITLE	PERSONNEL	TITLE	COUNTY	DATE
<u>D. CURTIS</u>				<u>LUCAS</u>	<u>JULY 2 1971</u>
<u>D. STEVENS</u>				S. R. <u>U.S. # 24</u>	WEATHER <u>PTLY CLOUD</u>
				SEC. _____	TEMP. <u>70±</u>

DESCRIPTION \_\_\_\_\_ REFERENCES TO CONTROL PTS. \_\_\_\_\_ JOB NO. \_\_\_\_\_

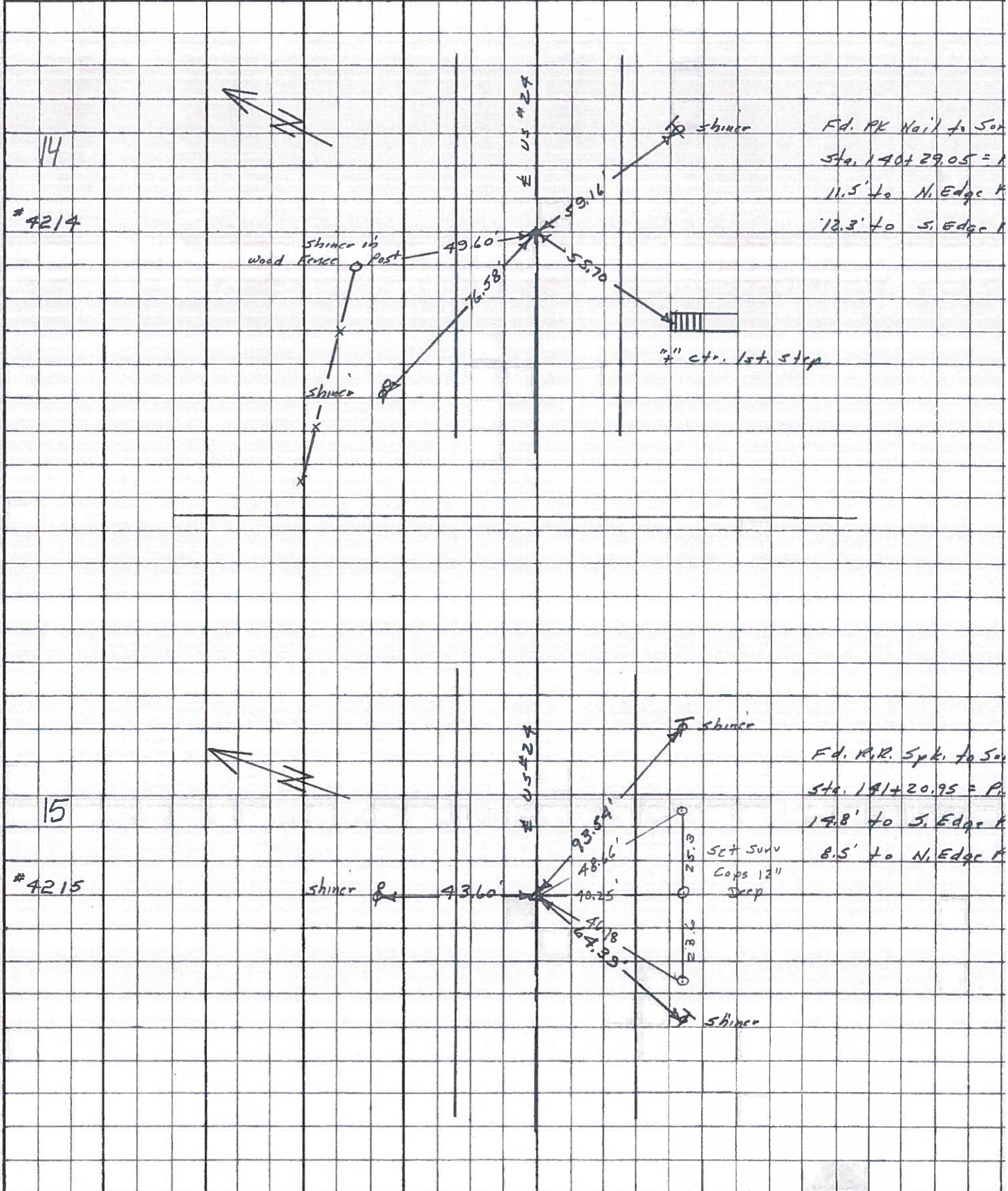
LEFT CENTER LINE RIGHT



PERSONNEL	TITLE	PERSONNEL	TITLE	COUNTY	DATE	WEATHER	TEMP.
Stone	Notes			Lucas	May 68	Fair	
Beck	Flag			S. R. # 24			
Michalak	Tape						
Schroder	Tape			SEC.			

DESCRIPTION References to Central Pts. JOB NO. \_\_\_\_\_

LEFT CENTER LINE RIGHT



PERSONNEL	TITLE	PERSONNEL	TITLE	COUNTY	Lucas	DATE	3 Feb. 66
<u>Stout</u>				S. R.	#24	WEATHER	c/
<u>Beck</u>				SEC.		TEMP.	
<u>Brundley</u>							
<u>Schröder</u>							

DESCRIPTION \_\_\_\_\_ LEFT \_\_\_\_\_ CENTER LINE \_\_\_\_\_ RIGHT \_\_\_\_\_ JOB NO. \_\_\_\_\_

DESCRIPTION	LEFT	CENTER LINE	RIGHT	JOB NO.
✓ 140+29.05 = P.C. Set PK Nail 14 To Surface		76.58' 59.16' 55.70'	N.W. To Shiner in P.P. (D) S.E. To Shiner in T.P. (D) S.W. To 4" 10' ctr B Hem Step (D)	
✓ 141+20.95 - Δ Ed. P.R. Spt. 15 To Surface		43.60' 88.52 73.59' 64.39'	N. To Shiner in P.P. (D) S.E. To Shiner in 12" Ash T.P. (D) S.W. To Shiner in T.P. (D)	
✓ 142+19.89 = P.T. Set PK Nail 16 To Surface		95.97' 91.60' 72.12'	N.E. To " (D) S.E. To " (D) S.W. To " (D)	
✓ 147+23.15 = P.I. (Hartman Rd.) Ed. P.R. Spt. 17 To Surface		54.94 51.52 75.79' 72.09' 97.15'	N.E. To " in P.P. (D) N.W. To " P.P. (D) S.W. To " (D) S.E. " " " " (D)	
✓ 159+29.83 = P.C. Set PK Nail 18 To Surface		78.28 40.15 71.18	N.E. To Shiner in 20" Ash (D) N. To R/W Monument (D) S.W. To Shiner in P.P. (D)	
✓ 160+36.97 = P.T. Ed. P.R. Spt. 19 To Surface		75.93' 65.63 62.34' 38.54'	N.E. To Shiner in T.P. (D) N. To S.W. Cor. Res. (Blk) (D) N.W. To Shiner in 20" Ash (D) S.W. To Shiner in P.P. (D)	
✓ 180+64.40 = P.I. Ed. P.R. Spt. 20 To Surface		71.19' 42.55' 76.88'	N.E. To Shiner in 8" Apple (P) N.W. To Shiner in P.P. (P) S.E. To Shiner in T.P. (P)	

PERSONNEL	TITLE	PERSONNEL	TITLE
Silvester			
Crew			

COUNTY Lucas DATE 1958

S. R. #24 WEATHER

SEC. He-Luc. - Water TEMP.

DESCRIPTION LEFT CENTER LINE RIGHT JOB NO.

