

O.D.O.T. DISTRICT 2 SURVEY OFFICE

PERSONNEL _____

REFERENCE NO. 16

SHEET 20 OF 68

NOTES S. HOSS

H.C. B. VAN DUSEN

DATE 5-28-97

ROUTE US-24

R.C. K. MOSER

WEATHER PARTLY CLOUDY - WINDY

COUNTY LUCAS

TEMP. 76.1°F

TOWNSHIP PROVIDENCE

SECTION 5

T S N R 9 E

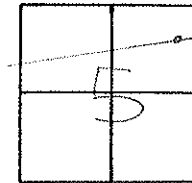
TYPE MONUMENT PK NAIL / W

ON SURFACE - ~~BELOW~~ ON SURFACE

LEFT - ~~C PAV'T.~~ RIGHT 1.0' LT

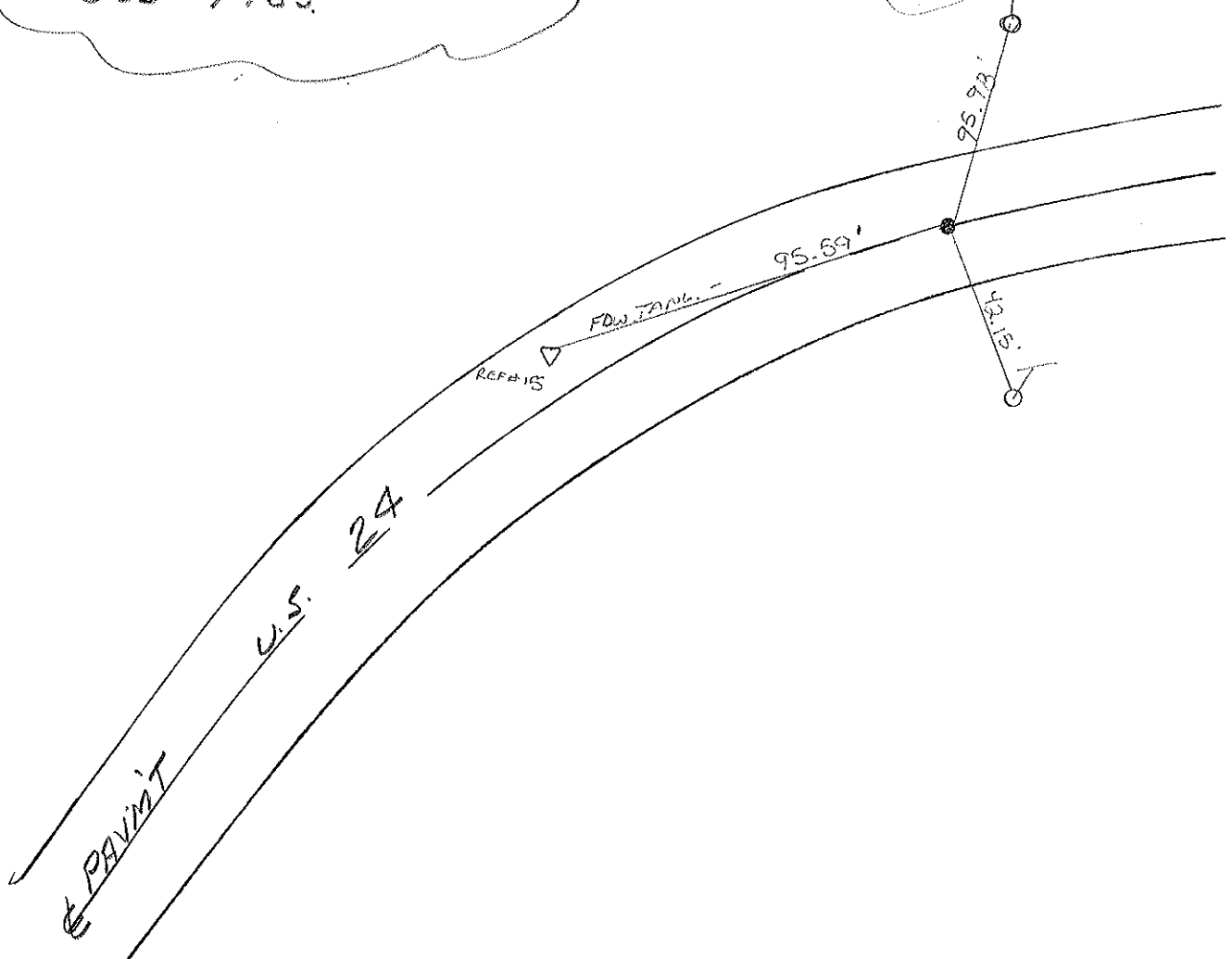
11.1 TO LT EDGE PAVEMENT

S.L.M. 142722



NOTE: UNABLE TO LOCATE ORIGINAL POINT!
HAD TO RESET WITH OLD TIES.

"DID NOT FWD"
SET PK / WASAER
FROM OLD TIES
10-21-97
SAH



O.D.O.T. DISTRICT 2 SURVEY OFFICE

Sht. 12 of

County Lucas S.R. US #24

Date 29 July 1980

Township Providence

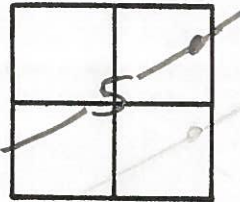
Weather Fair

Section 5

Temp. 79°

T N, R E

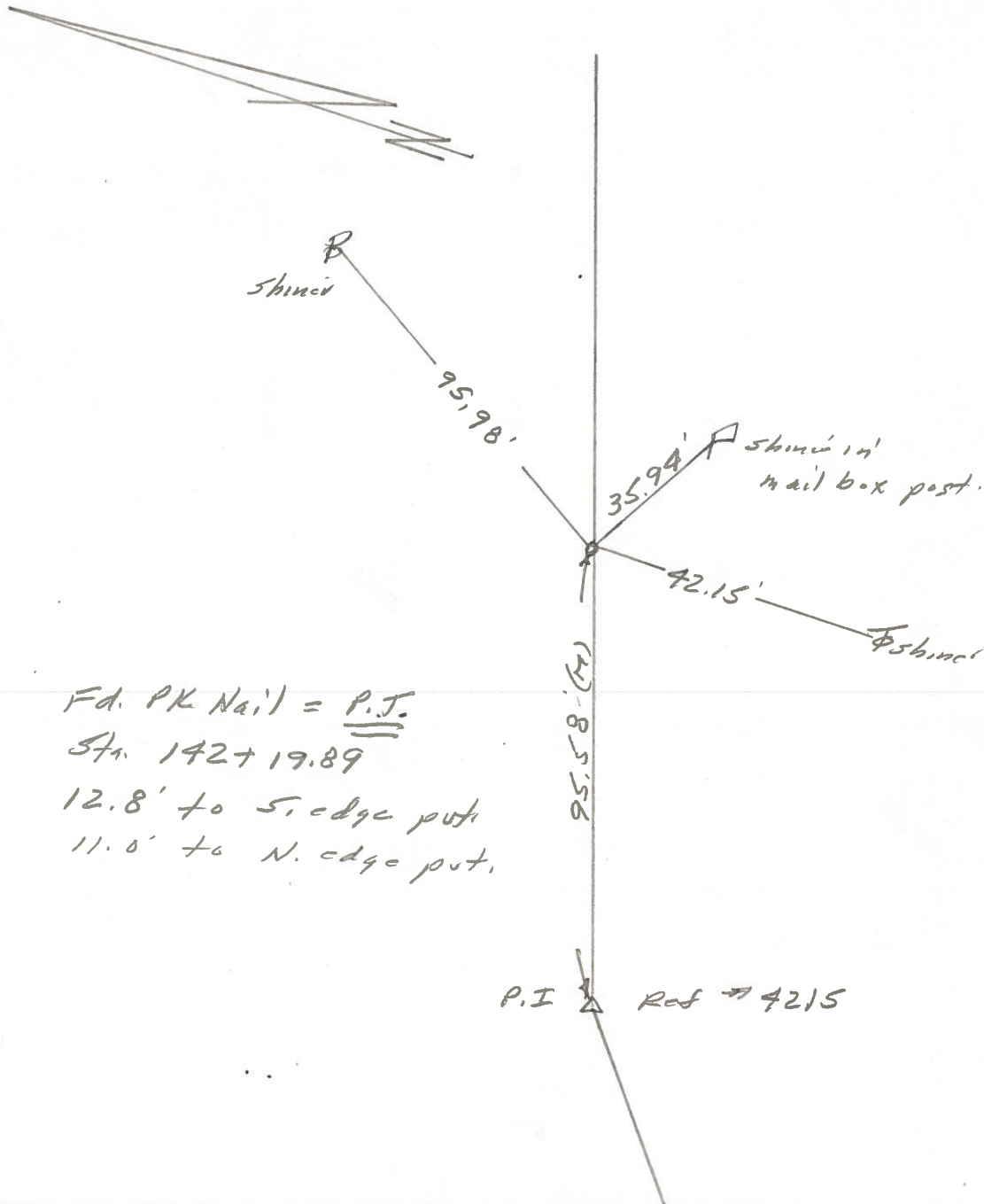
Personnel L. Stone



- R. Michalak
- P. Houser
- D. Curtis
- D. Granatq

16

REF. NO. 4216



PERSONNEL TITLE PERSONNEL TITLE

D. CURTIS

COUNTY LUCAS

DATE JULY 2, 1971

D. STEVENS

S. R. U.S. #24

WEATHER PTLY CLOUDY

SEC. _____

TEMP. 75 ±

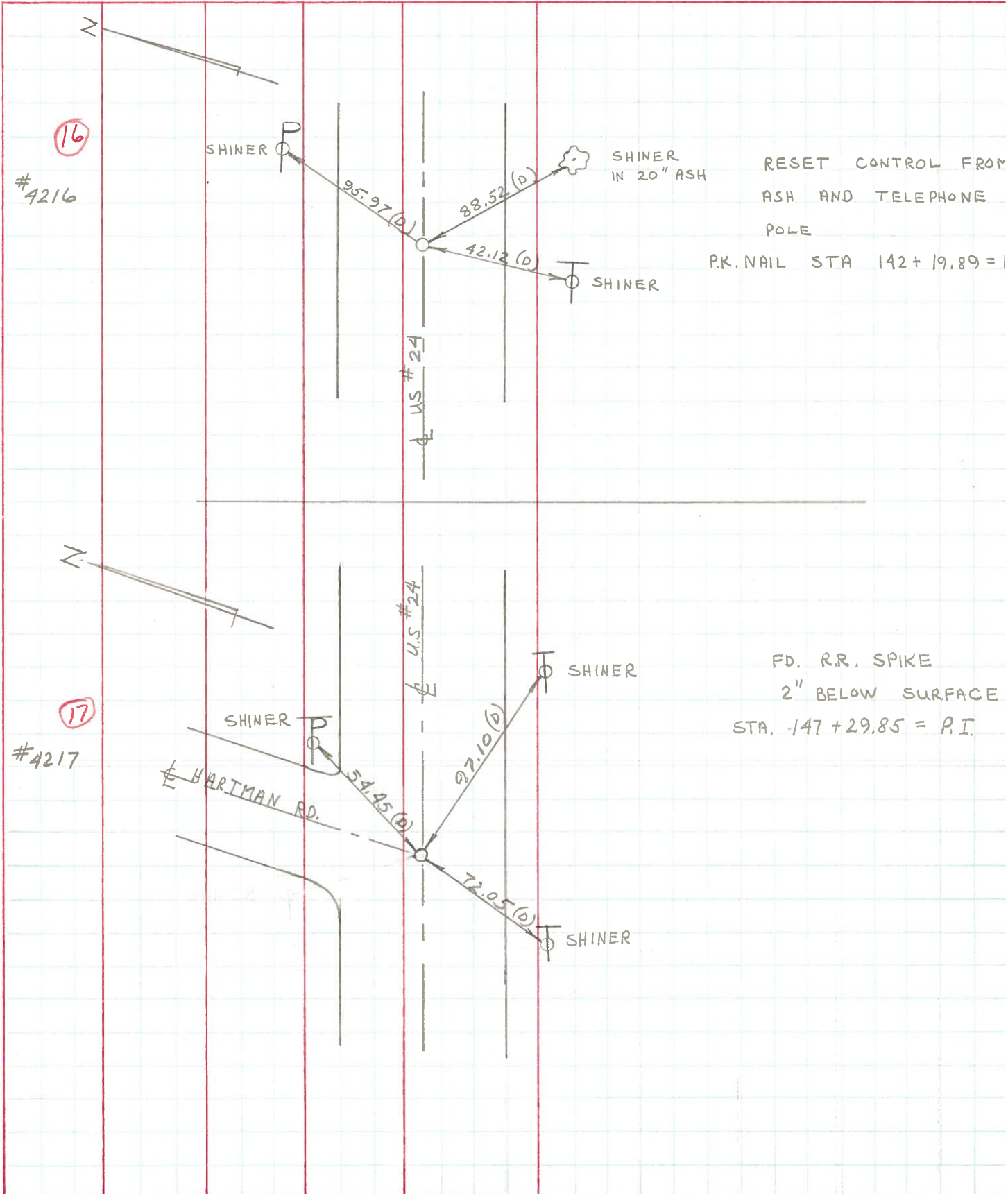
DESCRIPTION REFERENCES TO CONTROL POINTS

LEFT

CENTER LINE

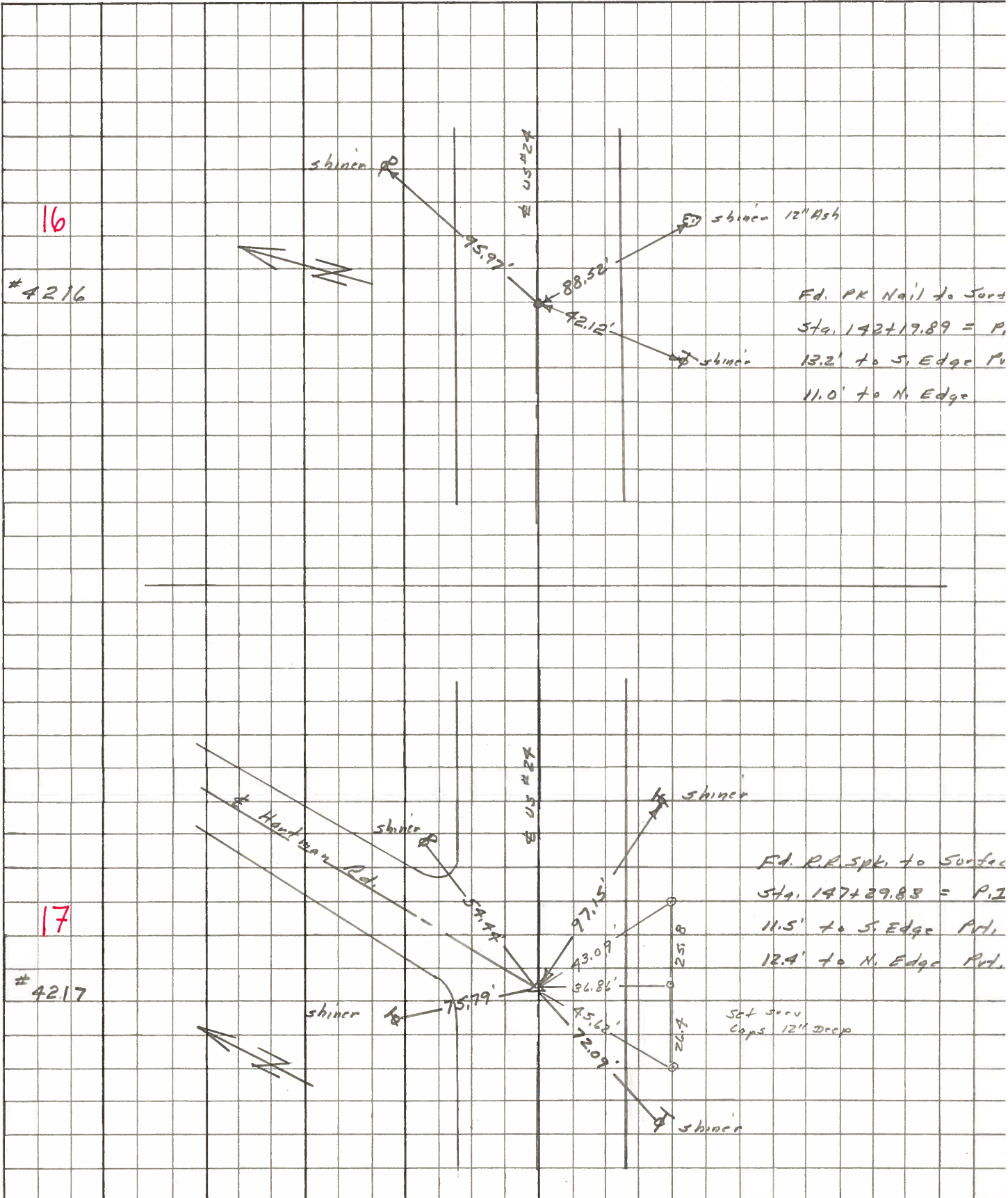
RIGHT

JOB NO. _____



PERSONNEL	TITLE	PERSONNEL	TITLE	COUNTY	DATE	S. R.	WEATHER
Stone	Notes			Lucas	May 68	# 24	Fair
Beck	Flag						
Michalak	Tape						
Schroder	Tape						

DESCRIPTION References to Central Points JOB NO. _____
 LEFT CENTER LINE RIGHT



PERSONNEL	TITLE	PERSONNEL	TITLE	COUNTY	Lucas	DATE	3 Feb 66
<u>Shont</u>				S. R.	#24	WEATHER	cl
<u>Beech</u>				SEC.		TEMP.	
<u>Brudwig</u>							
<u>Schroder</u>							

DESCRIPTION LEFT CENTER LINE RIGHT JOB NO.

DESCRIPTION	LEFT	CENTER LINE	RIGHT	JOB NO.
✓ 140+29.05 = P.C.		76.58'	N.W. To Shiner in P.P. (D)	
14	Set PK Nail	59.16'	S.E. To Shiner in T.P. (D)	
	To Surface	55.70'	S.W. To 4" in str B Ham Stop (D)	
✓ 141+20.95 - Δ		43.60'	N. To Shiner in P.P. (D)	
15	Ed. P.R. Spt.	88.52'	S.E. To Shiner in 12" Ash T.P. (D)	
	To Surface	73.54'	S.W. To Shiner in T.P. (D)	
✓ 143+19.89 = P.T.		95.97'	N.E. To " (D)	
16	Set PK Nail	91.60'	S.E. T (D)	
	To Surface	72.12'	S.W. T (D)	
✓ 147+23.15 = P.I. (Hartman Rd.)		54.94'	N.E. T in P.P. (D)	
17	Ed. P.R. Spt.	51.52'	N.W. To " P.P. (D)	
	To Surface	75.79'	S.W. To S " (D)	
		72.09'	S.E. " " " " (D)	
		97.15'		
✓ 157+29.83 = P.C.		78.28'	N.E. To Shiner in 20" Ash (D)	
18	Set PK Nail	70.15'	N. To R/W. Monument (D)	
	To Surface	71.18'	S.W. To Shiner in P.P. (D)	
✓ 160+36.97 = P.T.		75.93'	N.E. To Shiner in T.P. (D)	
19	Ed. P.R. Spt.	65.63'	N. To S.W. Cor. Res. (Blk) (D)	
	To Surface	62.34'	N.W. To Shiner in 20" Ash (D)	
		38.54'	S.W. To Shiner in P.P. (D)	
✓ 180+64.40 = P.I.		71.19'	N.E. To Shiner in 8" Apple (P)	
20	Ed. Spt.	42.55'	N.W. To Shiner in P.P. (P)	
	To Surface	76.88'	S.E. To Shiner in T.P. (P)	

PERSONNEL	TITLE	PERSONNEL	TITLE
Silvester			
⊕			
Crew			

COUNTY Lucas DATE 1958

S. R. #24

WEATHER

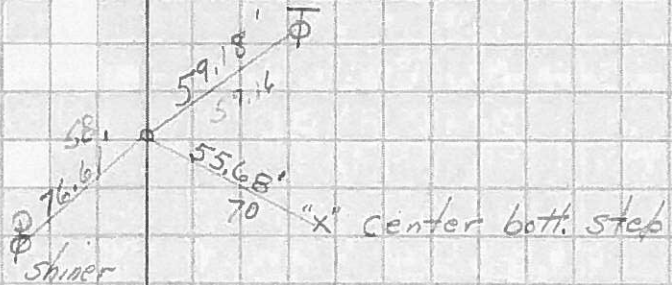
SEC. He-Luc.-Water

TEMP.

DESCRIPTION LEFT CENTER LINE RIGHT JOB NO.

✓ P.C. Sta. 140+29.05

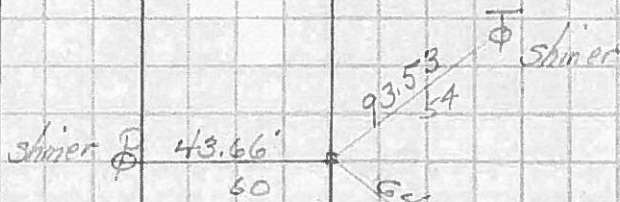
14



✓ P.I. Sta. 141+20.95

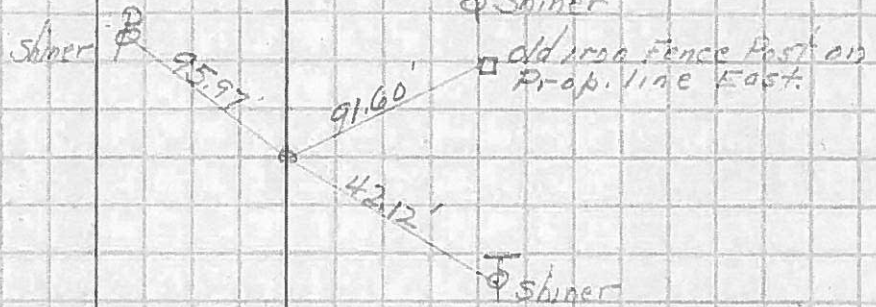
R.R. Spk. Set

15



✓ P.T. Sta. 142+19.89

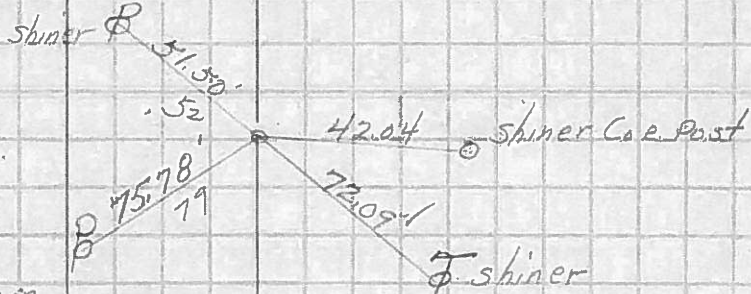
16



✓ P.I. Sta. 147+23.15 (Hartman Rd)

R.R. Spk. Set (old & new P.I.)

17



✓ P.C. Sta. 159+29.83

18

