

O.D.O.T. DISTRICT 2 SURVEY OFFICE

PERSONNEL

REFERENCE NO. 17

SHEET 21 OF 68

NOTES S. HUSS

H.C. B. VAN DUSEN

DATE 5-28-97

ROUTE US-24

R.C. K. MOSER

WEATHER Partly Cloudy / Windy

COUNTY Lucas

TEMP. +61°F

TOWNSHIP Providence

SECTION 33

T 6 N R 9 E

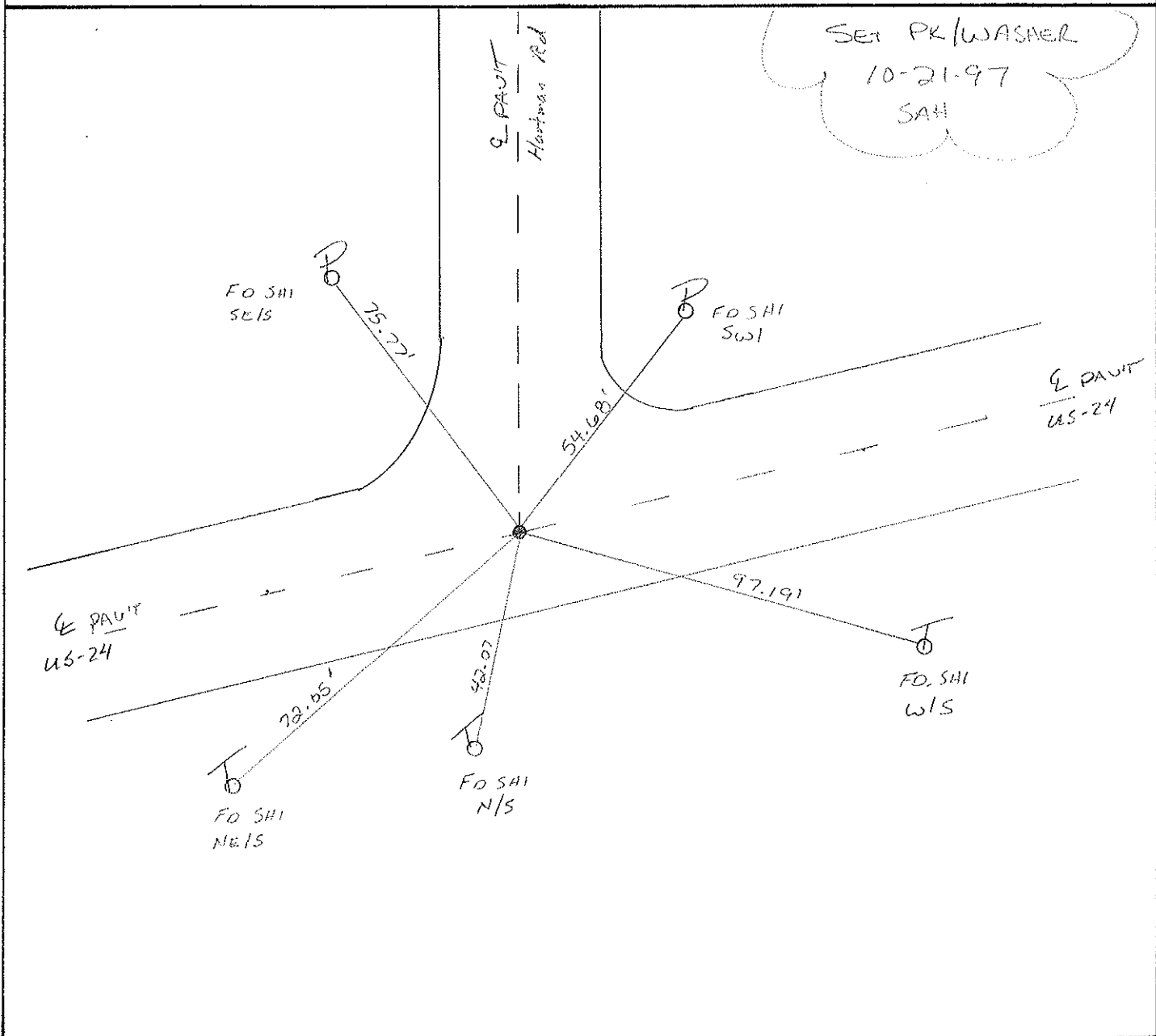
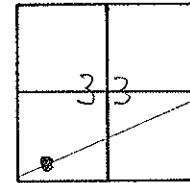
TYPE MONUMENT PK & WASHER

ON SURFACE - ~~BELOW~~ CW SURFACE

LEFT - 0 PAV'T. - RIGHT 6.4 FT

11.4 TO RT EDGE PAVEMENT

S.L.M. 147+27



O.D.O.T. DISTRICT 2 SURVEY OFFICE

PERSONNEL

REFERENCE NO. 17

SHEET 14 OF

NOTES VAN DUSEN

H.C. MOSEK

R.C. SLOVAK

HERMILLER P

DATE 10-7-94

WEATHER SUNNY

TEMP. +70°F

ROUTE US#24

COUNTY LUCAS

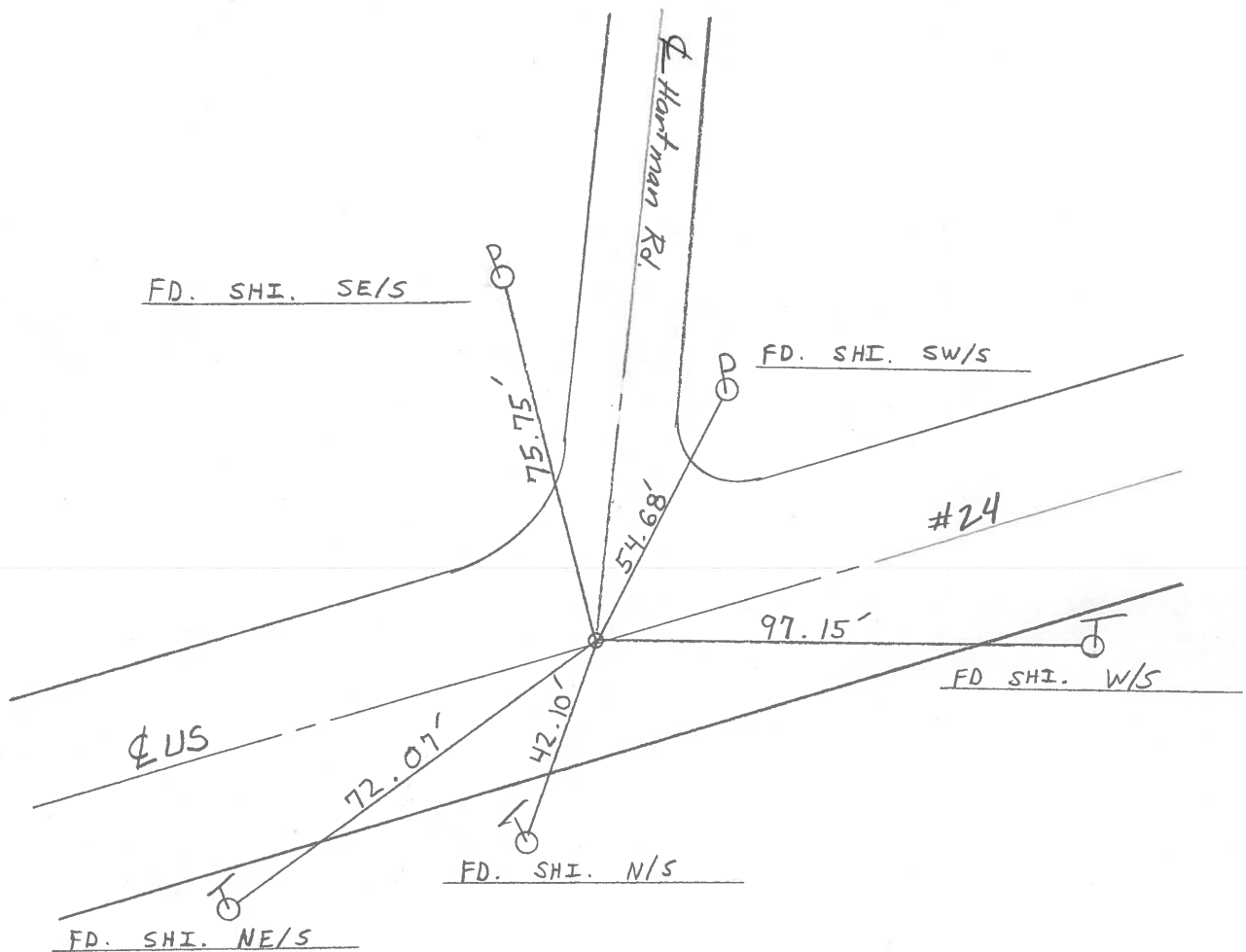
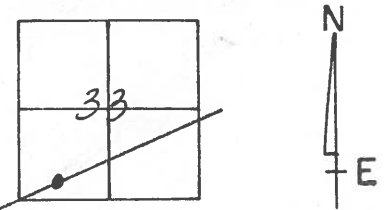
TOWNSHIP Providence

SECTION 33

T 6 N R 9 E

Set P.R./WASHER
5-15-95
C.L.

TYPE MONUMENT SM. RR. SPIKE
ON SURFACE - BELOW ON SURFACE
~~LEFT - & PAV'T. - RIGHT~~ ON & BOTH
11.9' TO RT EDGE PAVEMENT
S.L.M. 146 + 82



O.D.O.T. DISTRICT 2 SURVEY OFFICE

PERSONNEL _____

REFERENCE NO. 17

SHEET 17 OF _____

NOTES 1. Stone

H.C. D. Curtis

R.C. J. Hauscholder

DATE 29 Aug, 89

WEATHER Cloudy

TEMP. 70°

ROUTE US #24

COUNTY Lucas

TOWNSHIP Providence

SECTION 33

T _____ R _____

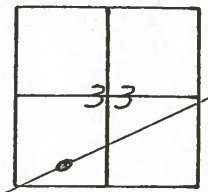
TYPE MONUMENT RR Spt.

ON SURFACE - BELOW 4" deep

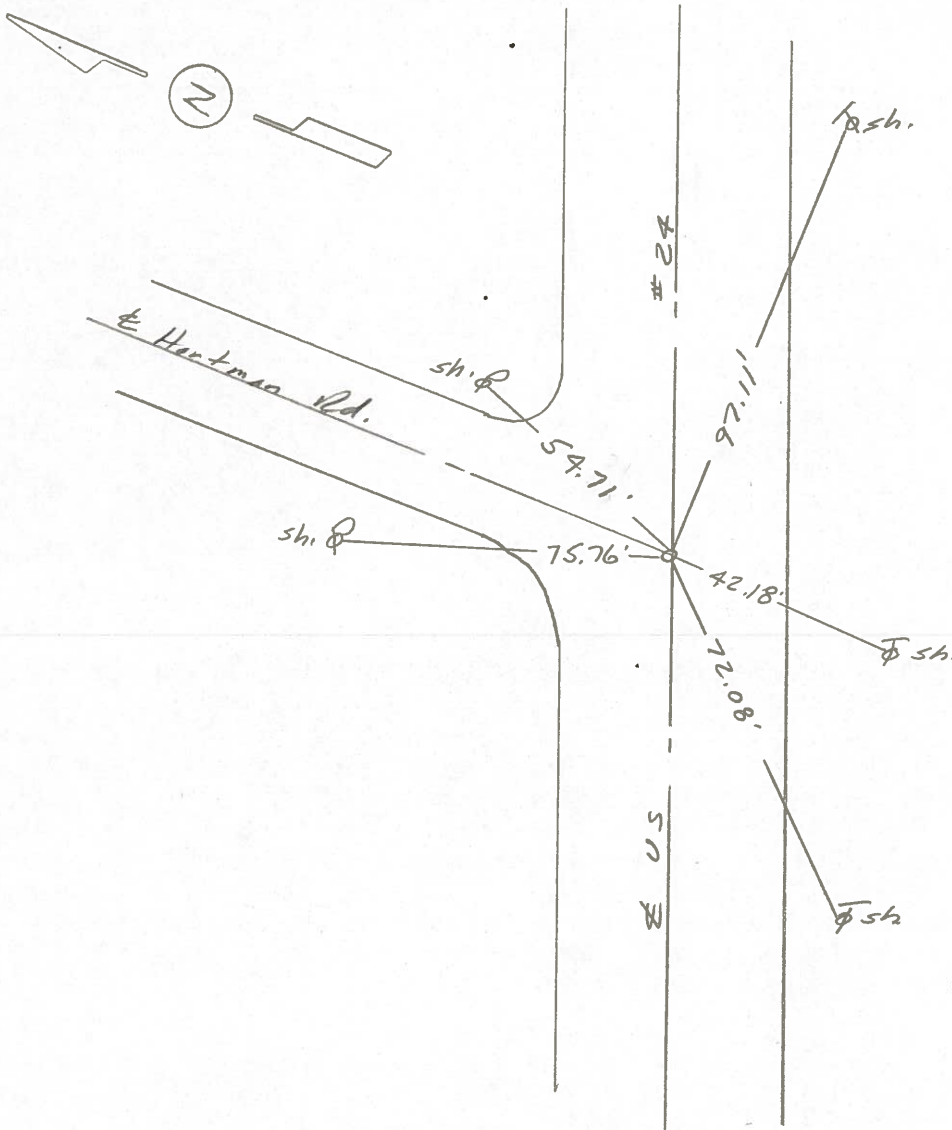
LEFT - & PAW'T. - RIGHT _____

_____ TO _____ EDGE PAVEMENT

S.L.M. 146+87



*Set Small RR Spt. 10/13/89
IRS*



OD.O.T. DISTRICT 2 SURVEY OFFICE

Sht. 20 of

County Locas S.R. US#24

Township Providence

Section 33

T N, R E

Personnel L. Stone

R. Michalak

P. Neuser

D. Curtis

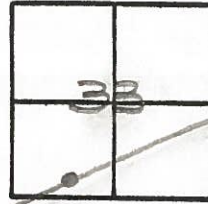
~~D. Granata~~

17

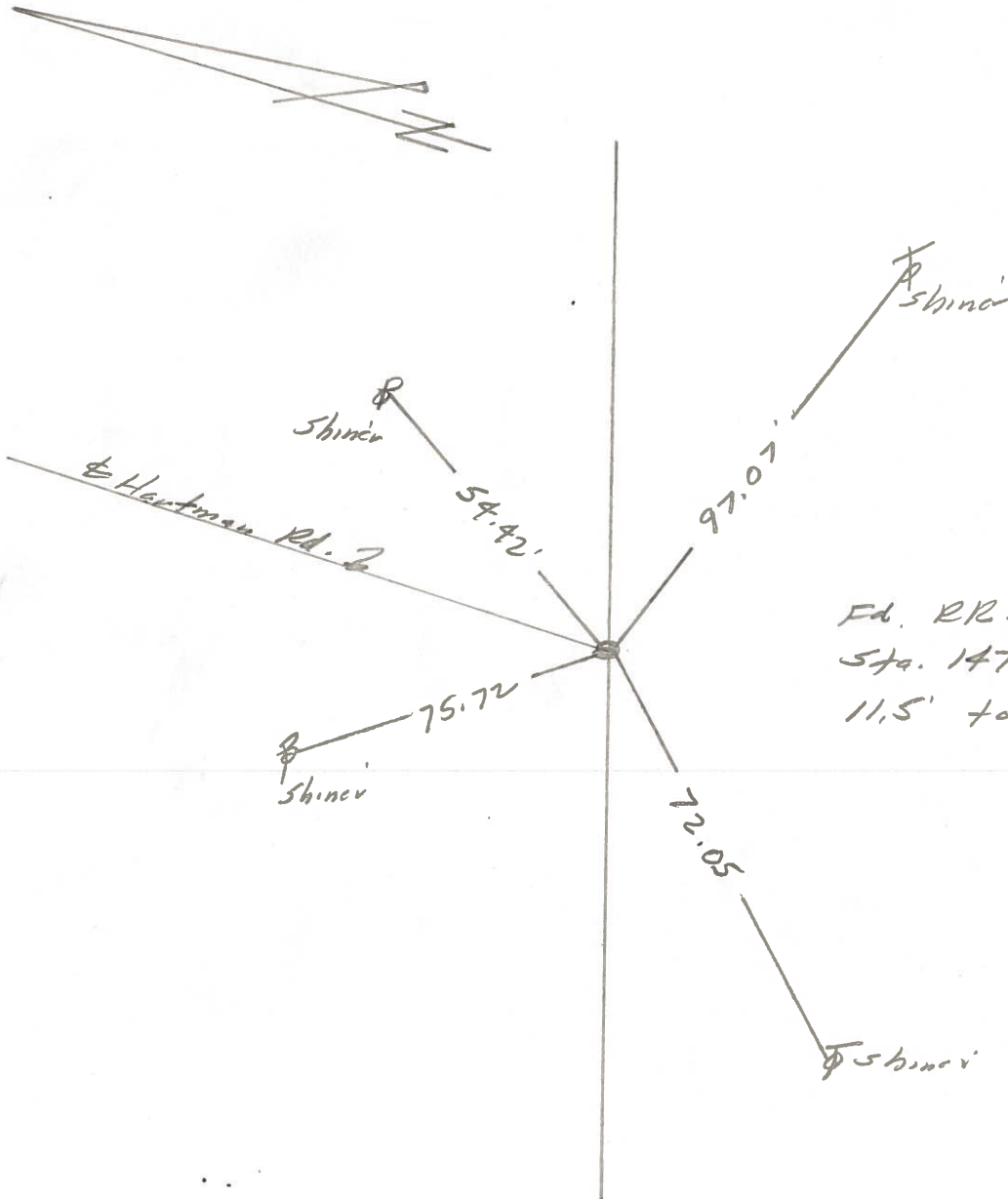
Date 9 July 1980

Weather Fair

Temp. 79°



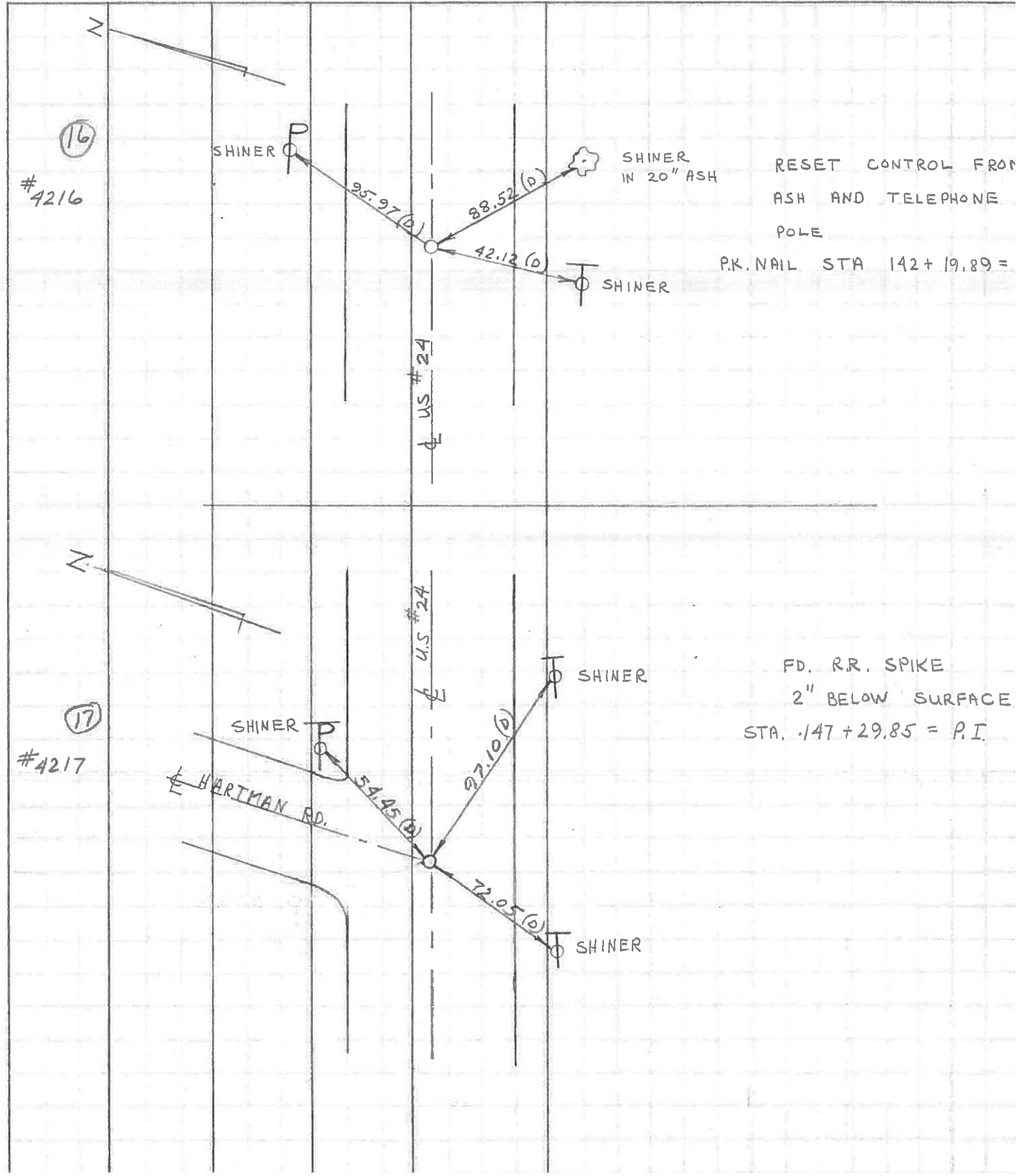
REF. NO. 4217



Fd. RR Spk. 2" deep
Sta. 147 + 29.85 = P.I.
11.5' to S. edge put.

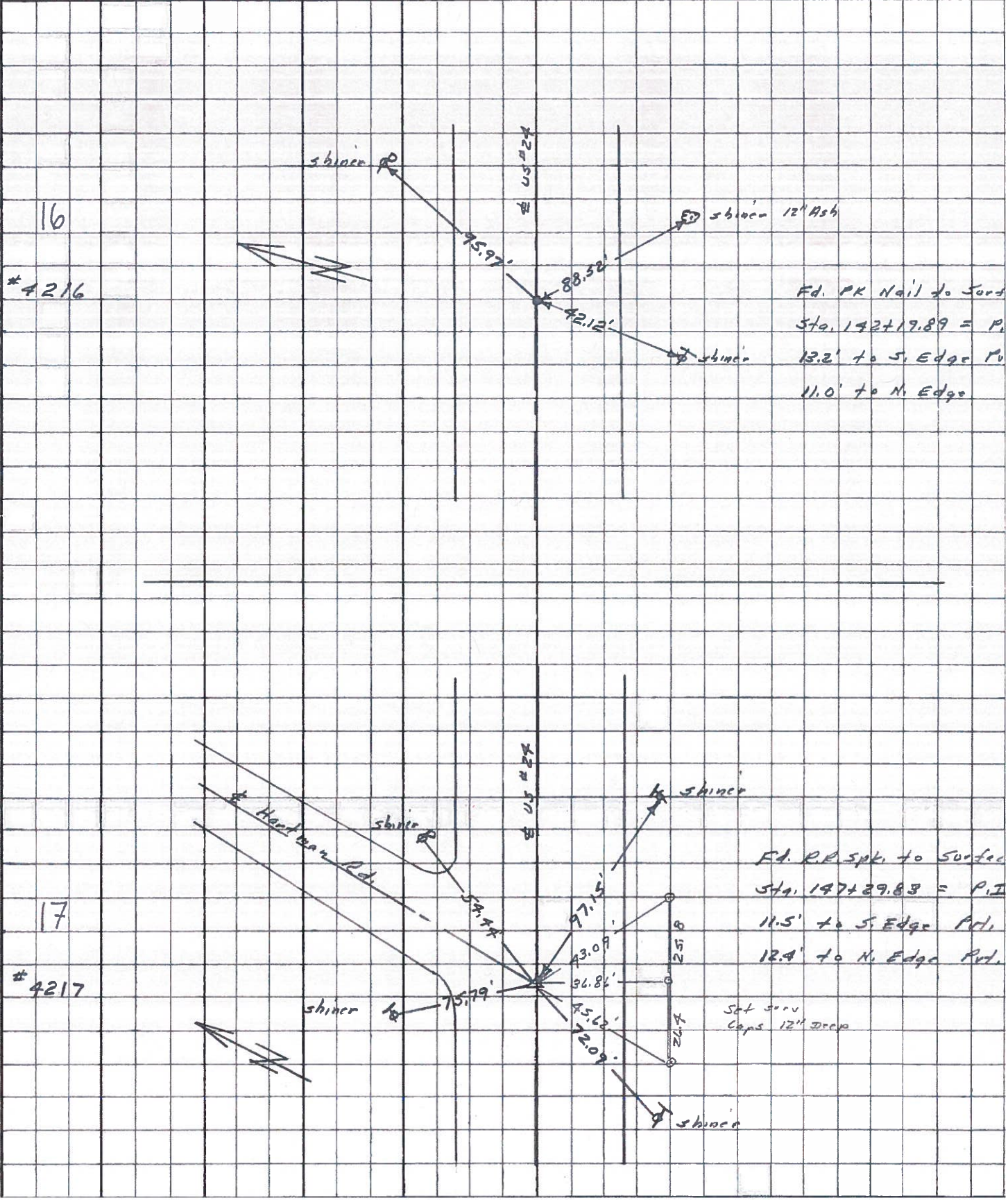
PERSONNEL	TITLE	PERSONNEL	TITLE	COUNTY	<u>LUCAS</u>	DATE	<u>JULY 2, 1971</u>
<u>D. CURTIS</u>				S. R.	<u>U.S. #24</u>	WEATHER	<u>PTLY CLOUDY</u>
<u>D. STEVENS</u>				SEC.		TEMP.	<u>75 ±</u>

DESCRIPTION _____ REFERENCES TO CONTROL POINTS _____ JOB NO. _____
LEFT CENTER LINE RIGHT



PERSONNEL	TITLE	PERSONNEL	TITLE	COUNTY	DATE	WEATHER	TEMP.
Stone	Notes			Lucas	May 68	Fair	
Beck	Flag			# 24			
Michalak	Tape						
Schroder	Tape						

DESCRIPTION References to Central Points JOB NO. _____
 LEFT CENTER LINE RIGHT



PERSONNEL	TITLE	PERSONNEL	TITLE	COUNTY	DATE
<u>Stone</u>	_____	_____	_____	<u>Lucas</u>	<u>3 Feb 66</u>
<u>Bect</u>	_____	_____	_____	S. R. <u>#24</u>	WEATHER <u>cl</u>
<u>Brindley</u>	_____	_____	_____	SEC. _____	TEMP. _____
<u>Schroder</u>	_____	_____	_____		

DESCRIPTION _____ LEFT _____ CENTER LINE _____ RIGHT _____ JOB NO. _____

✓	DESCRIPTION	LEFT	CENTER LINE	RIGHT	JOB NO.
✓	140+29.05 = P.C. Set PK Nail 14 To Surface		76.58' 59.16' 55.70'	N.W. To Shiner in P.P. (D) S.E. To Shiner in T.P. (D) S.W. To "4" in str B Ham Step (D)	
✓	141+20.95 - Δ Ed. R.R. Spt. 15 To Surface		43.60' 88.52 73.54 64.39'	N. To Shiner in P.P. (D) S.E. To Shiner in ^{12" Ash} P.P. (D) S.W. To Shiner in T.P. (D)	
✓	142+19.89 = P.T. Set PK Nail 16 To Surface		95.97' 91.60' 92.12'	N.E. To " " (D) S.E. To " " (D) S.W. To " " (D)	
✓	147+23.15 = P.I. (Hartman Rd.) Ed. R.R. Spt. 17 To Surface		54.44 51.52 75.79' 72.09' 97.15'	N.E. To " " in P.P. (D) N.W. To " " P.P. (D) S.W. To " " (D) S.E. " " " " (D)	
✓	159+29.83 = P.C. Set PK Nail 18 To Surface		78.28' 40.15 71.18	N.E. To Shiner in 20" Ash (D) N. To R/W Monument (D) S.W. To Shiner in P.P. (D)	
✓	160+36.97 = P.T. Ed. R.R. Spt. 19 To Surface		75.93' 65.63 62.34' 38.54'	N.E. To Shiner in T.P. (D) N. To S.W. Cor. Res. (Blk) (D) N.W. To Shiner in 20" Ash (D) S.W. To Shiner in P.P. (D)	
✓	180+64.40 = P.I. Ed. R.R. Spt. 20 To Surface		71.19' 42.55' 76.88'	N.E. To Shiner in 8" Apple (P) N.W. To Shiner in P.P. (P) S.E. To Shiner in T.P. (P)	

PERSONNEL TITLE PERSONNEL TITLE
 Silvester
 #
 Crew

COUNTY Lucas DATE 1958

S. R. #24 WEATHER

SEC. He-Luc.-Water TEMP.

DESCRIPTION LEFT CENTER LINE RIGHT JOB NO.

