

O.D.O.T. DISTRICT 2 SURVEY OFFICE

PERSONNEL

REFERENCE NO. 17-A

SHEET 22 OF 68

NOTES S. HOSS

H.C. B. VANDUSEN

DATE 5-28-97

ROUTE US-24

R.C. K. MOSER

WEATHER PARTLY CLOUDY/WINDY

COUNTY LUCAS

TEMP. 40°F

TOWNSHIP PROVIDENCE

SECTION 33

T. 6 N R. 9 E

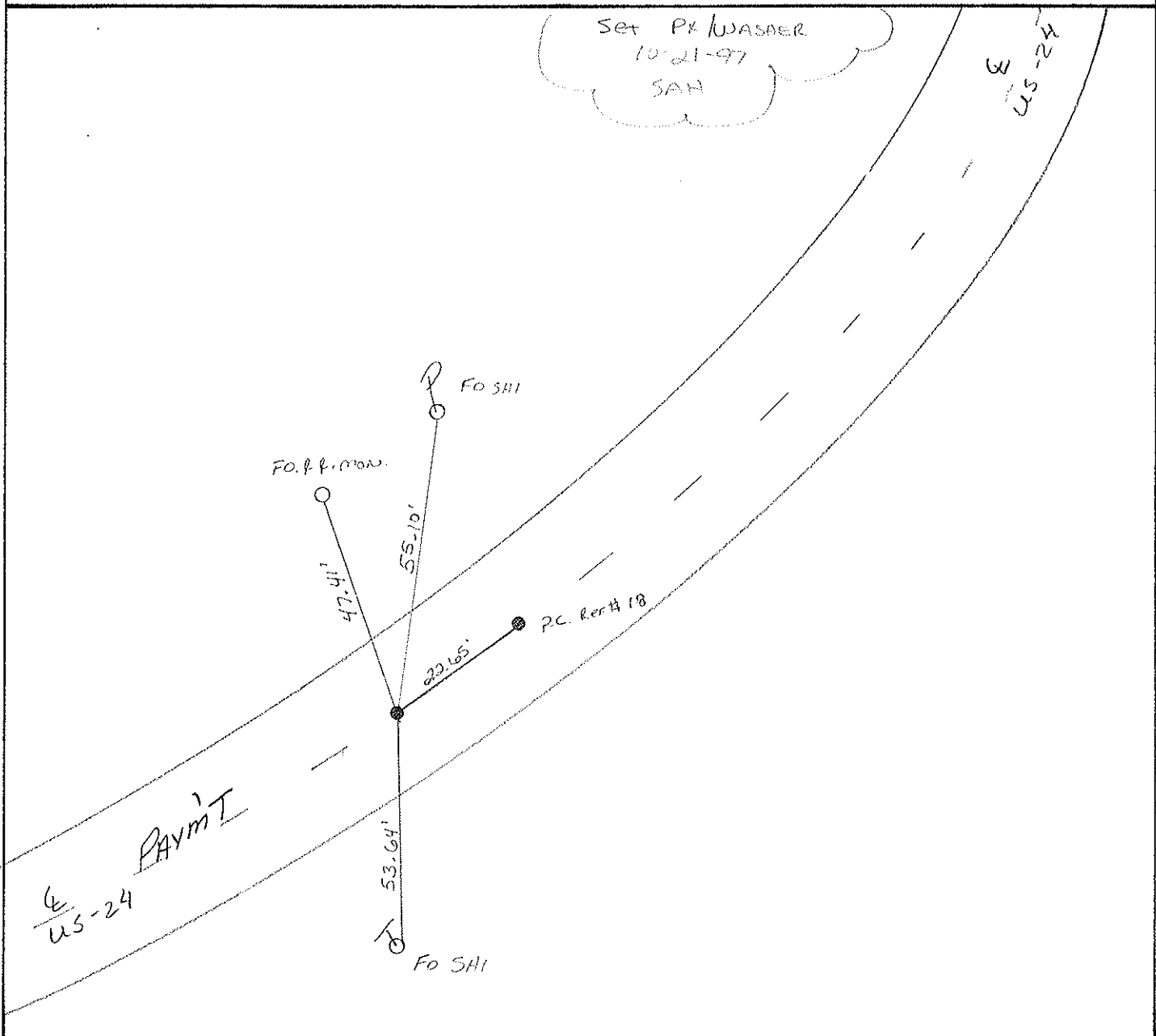
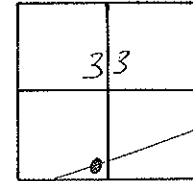
TYPE MONUMENT PK & WASHER

ON SURFACE - BELOW YES

LEFT - C PAV'T. - RIGHT 1.2' RT

10.9 TO RT EDGE PAVEMENT

S.L.M. 159+06



O.D.O.T. DISTRICT 2 SURVEY OFFICE

PERSONNEL

REFERENCE NO. 17-A SHEET 15 OF

NOTES VAN DUSEN

H.C. MOSEK

R.C. SLOVAK

HERMILLER P

DATE 10-7-94

WEATHER SUNNY

TEMP. +70° F

Set P.R./WASHER
5-15'-95
C.L.

ROUTE US #24

COUNTY LUCAS

TOWNSHIP Providence

SECTION 33

T 6 N R 9 E

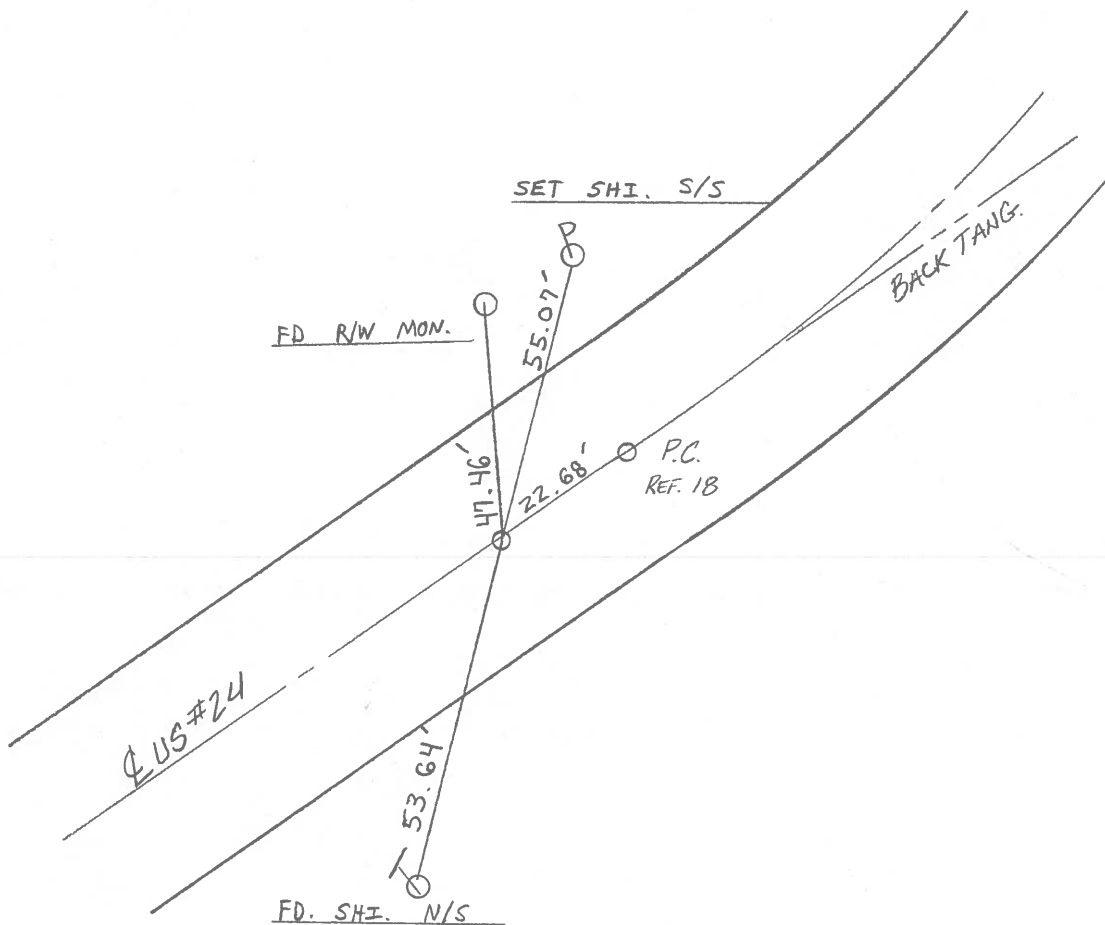
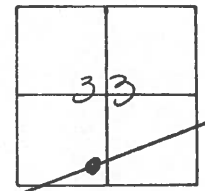
TYPE MONUMENT BOAT SPIKE

ON SURFACE - ~~BELOW~~ ON SURFACE

~~LEFT - C~~ PAV'T. - RIGHT 0.8' RT ℓ

11.0 TO RT. EDGE PAVEMENT

S.L.M. 158 + 62



O.D.O.T. DISTRICT 2 SURVEY OFFICE

PERSONNEL _____

REFERENCE NO. 17-A

SHEET 15 OF _____

NOTES 1. Stone

H.C. D. Curtis

R.C. J. Householder

DATE 29 Aug. 89

WEATHER Cloudy

TEMP. 70°

ROUTE US # 24

COUNTY Lucas

TOWNSHIP Providence

SECTION 33

T _____ R _____

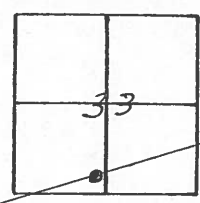
TYPE MONUMENT Boat Spk.

ON SURFACE - BELOW 2" deep

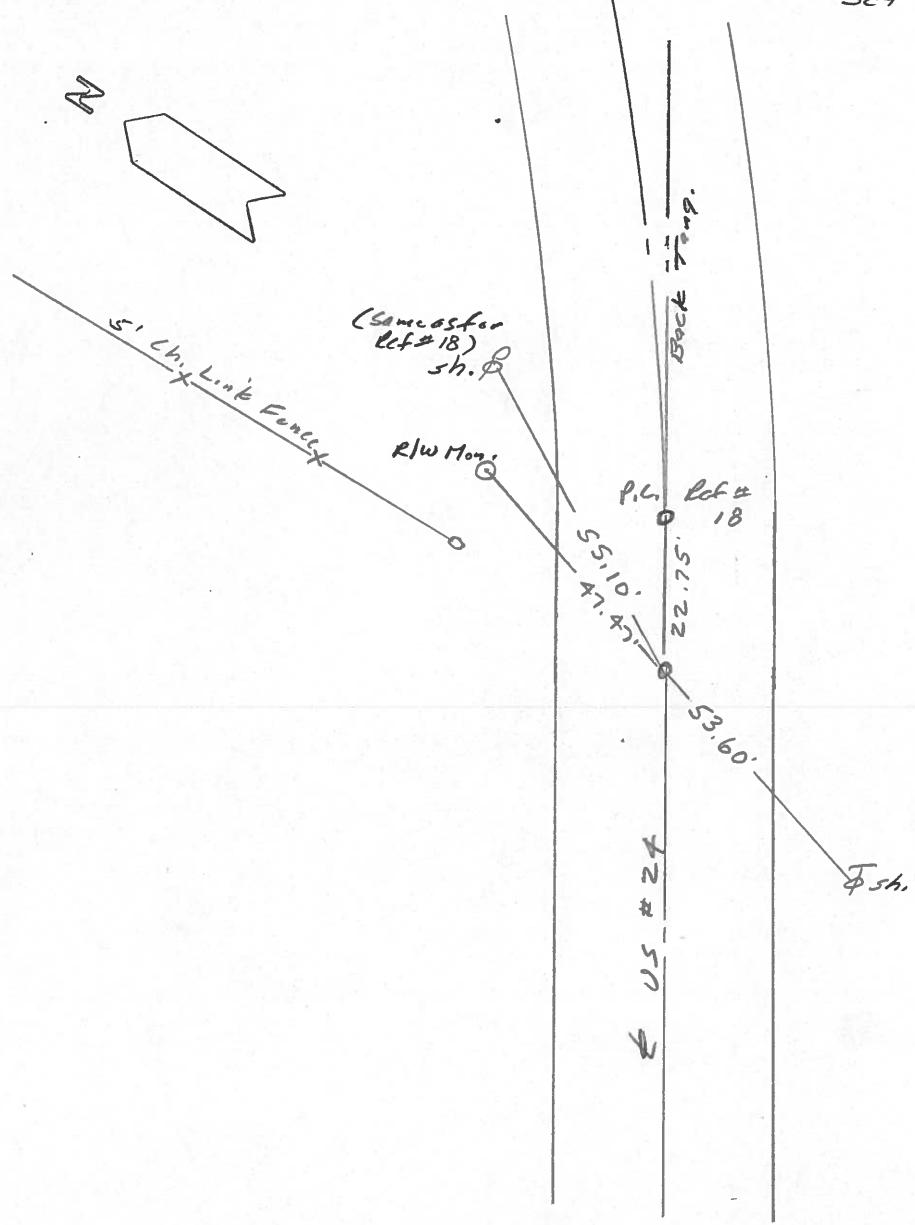
LEFT - & PAV'T. - RIGHT _____

TO _____ EDGE PAVEMENT

S.L.M. 158+70



Set Boat Spk. 10/13/89 IRS



OD.O.T. DISTRICT 2 SURVEY OFFICE

Sht. 21 of

County Lucas ~~S.R.~~ US #24

Township Providence

Section 33

T N, R E

Personnel I. Stone

17A

R. Michalak

P. Neuser

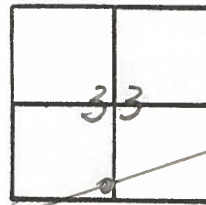
D. Curtis

D. Gramata

Date 9 July 1980

Weather Fair

Temp. 75°



REF. NO. 4217-A

