

O.D.O.T. DISTRICT 2 SURVEY OFFICE

PERSONNEL

REFERENCE NO. 18

SHEET 23 OF 68

NOTES S. HUSS

H.C. B. VAN DUSEN

DATE 5-28-97

ROUTE US-24

R.C. K. MOSER

WEATHER PARTLY CLOUDY / WINDY

COUNTY Lucas

TEMP. 161°F

TOWNSHIP Providence

SECTION 33

T. 6 N. R. 9 E.

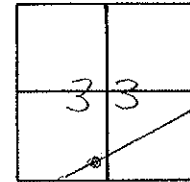
TYPE MONUMENT PK NAIL / W

ON SURFACE - ~~BELOW~~ ON SURFACE

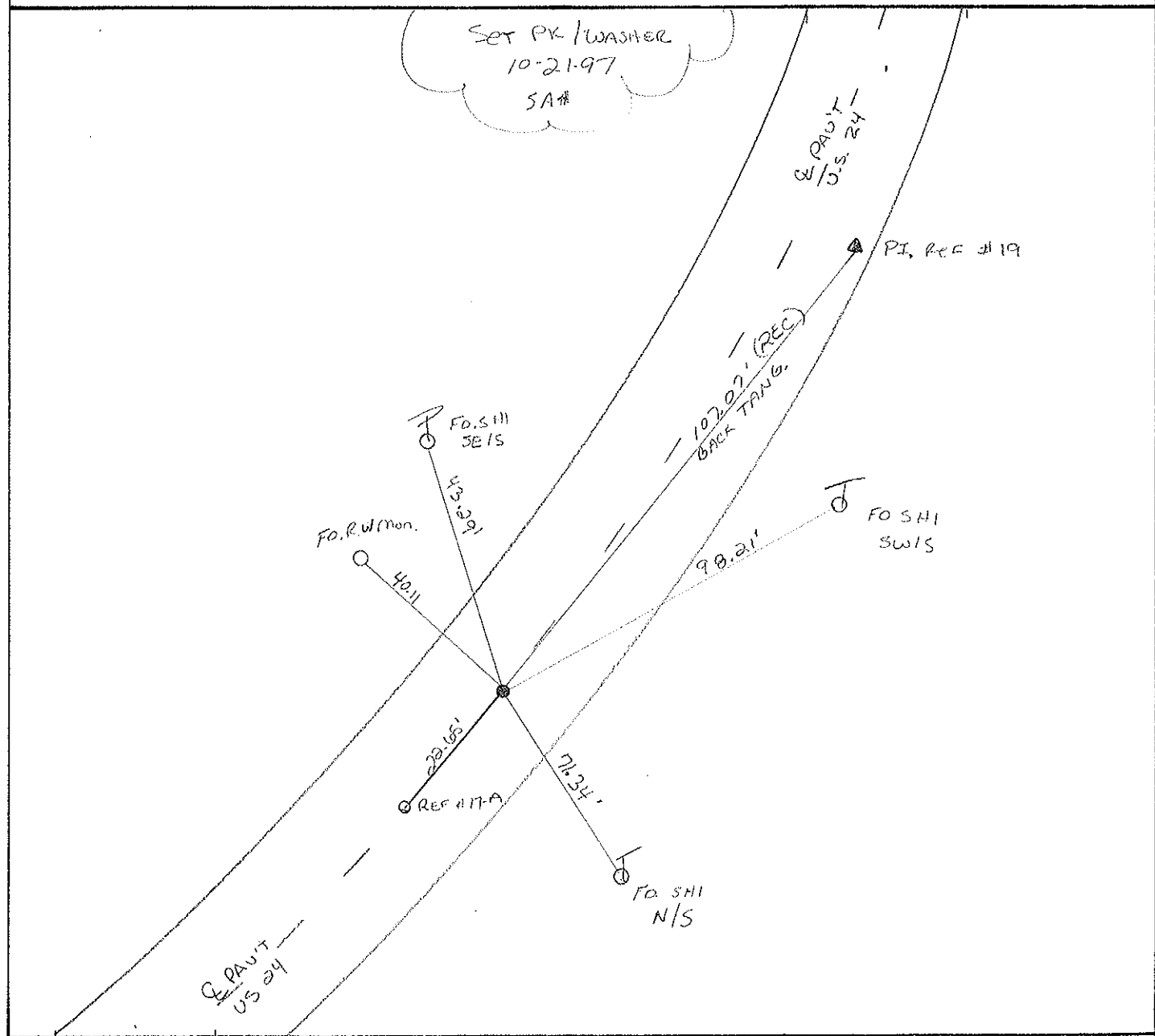
~~LEFT - C~~ PAV'T. - RIGHT 1.2' RT

10.3' TO RT. EDGE PAVEMENT

S.L.M. 159+32



SET PK / WASHER
 10-21-97
 SA#



O.D.O.T. DISTRICT 2 SURVEY OFFICE

PERSONNEL

REFERENCE NO. 18 SHEET 16 OF

NOTES VAN DUSEN

H.C. MOSEK

R.C. SLOVAK

HERMILLER P

DATE 10-7-94

WEATHER SUNNY

TEMP. +70° F

Set P.K./WASHER
5-15-95

ROUTE US #24

COUNTY LUCAS

TOWNSHIP Providence

SECTION 33

T 6 N R 9 E

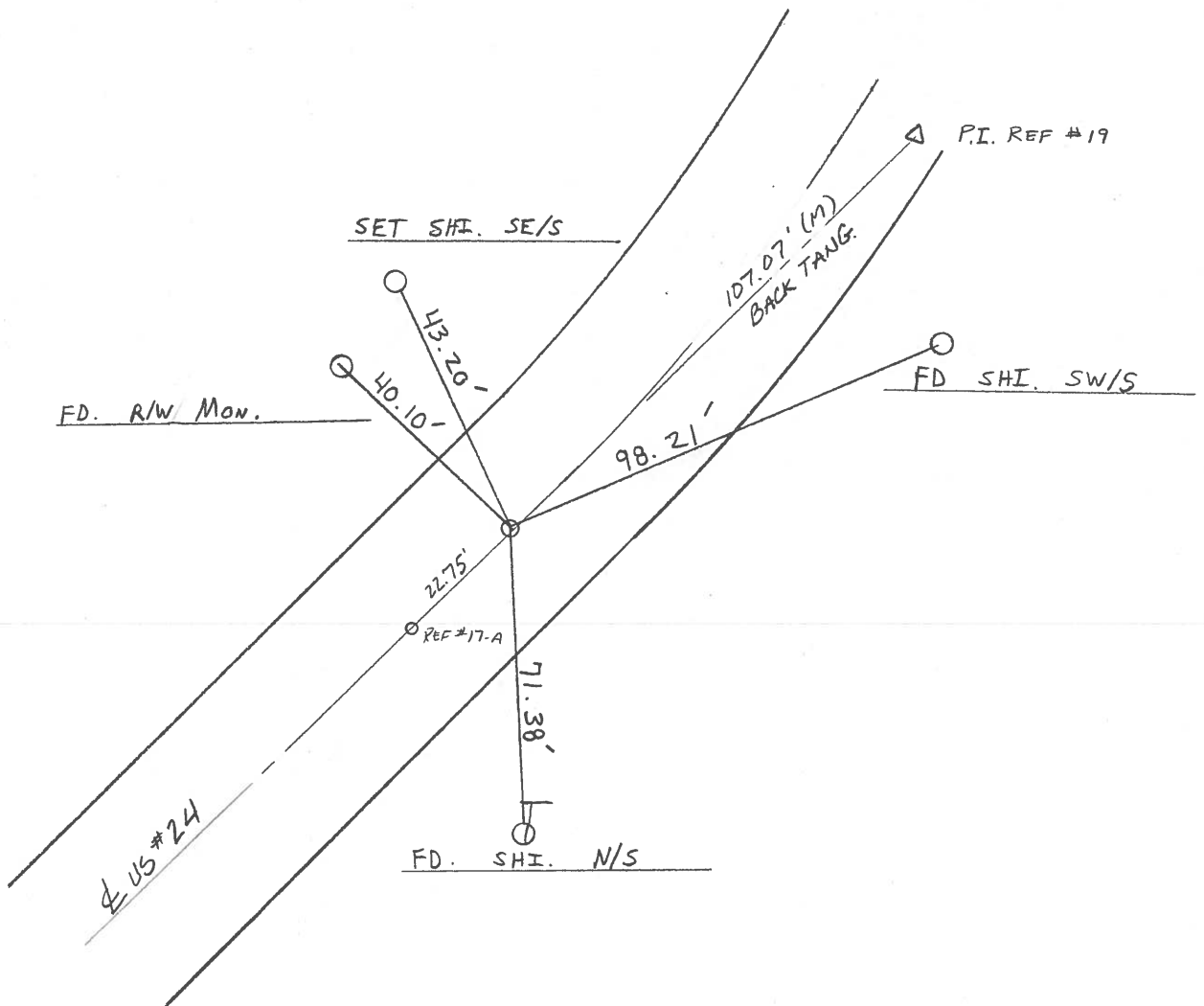
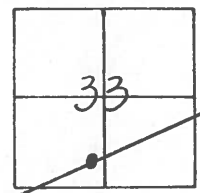
TYPE MONUMENT PK NAIL

ON SURFACE - ~~BELOW~~ AT SURFACE

~~LEFT - C~~ PAV'T. - RIGHT 1.0 RT

10.7 TO RT EDGE PAVEMENT

S.L.M. 158 + 85



O.D.O.T. DISTRICT 2 SURVEY OFFICE

PERSONNEL _____

REFERENCE NO. 18

SHEET 16 OF _____

NOTES L. Stone

H.C. D. Curtis

R.C. J. Henscholder

DATE 29 Aug. 89

WEATHER Cloudy

TEMP. 71°

ROUTE US # 24

COUNTY Lucas

TOWNSHIP Providence

SECTION 33

T _____ R _____

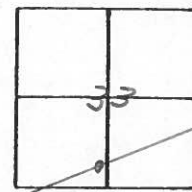
TYPE MONUMENT PK Nail

ON SURFACE - BELOW Surface

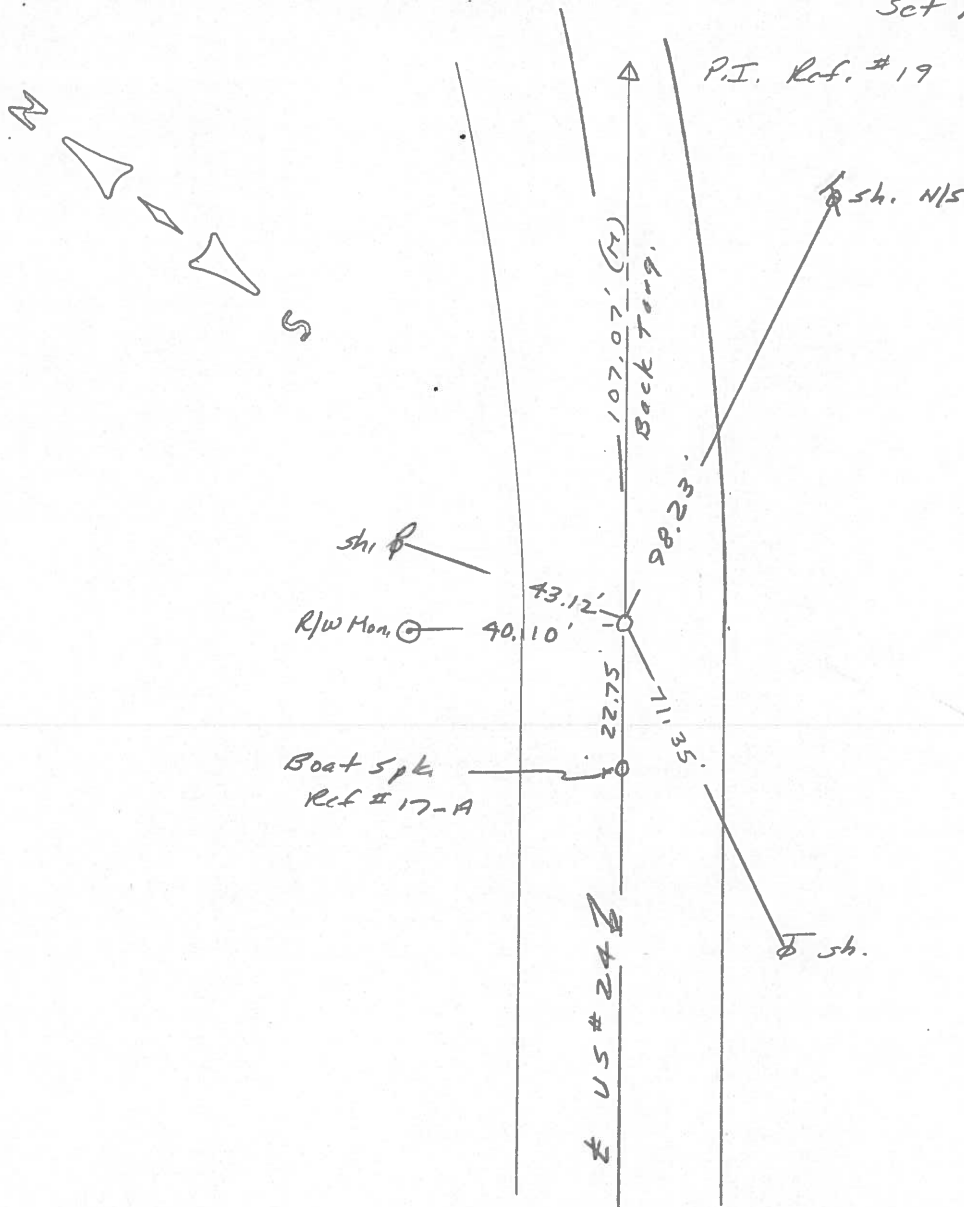
LEFT - \odot PAV'T. - RIGHT _____

_____ TO _____ EDGE PAVEMENT

S.L.M. 158+92



Set PK Nail 10/13/89 IRS



Q.D.O.T. DISTRICT 2 SURVEY OFFICE

Sht. 22 of

County Lucas S.R. US#24

Date 9 July 1980

Township Providence

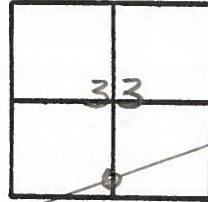
Weather Fair

Section 33

Temp. 75°

T N, R E

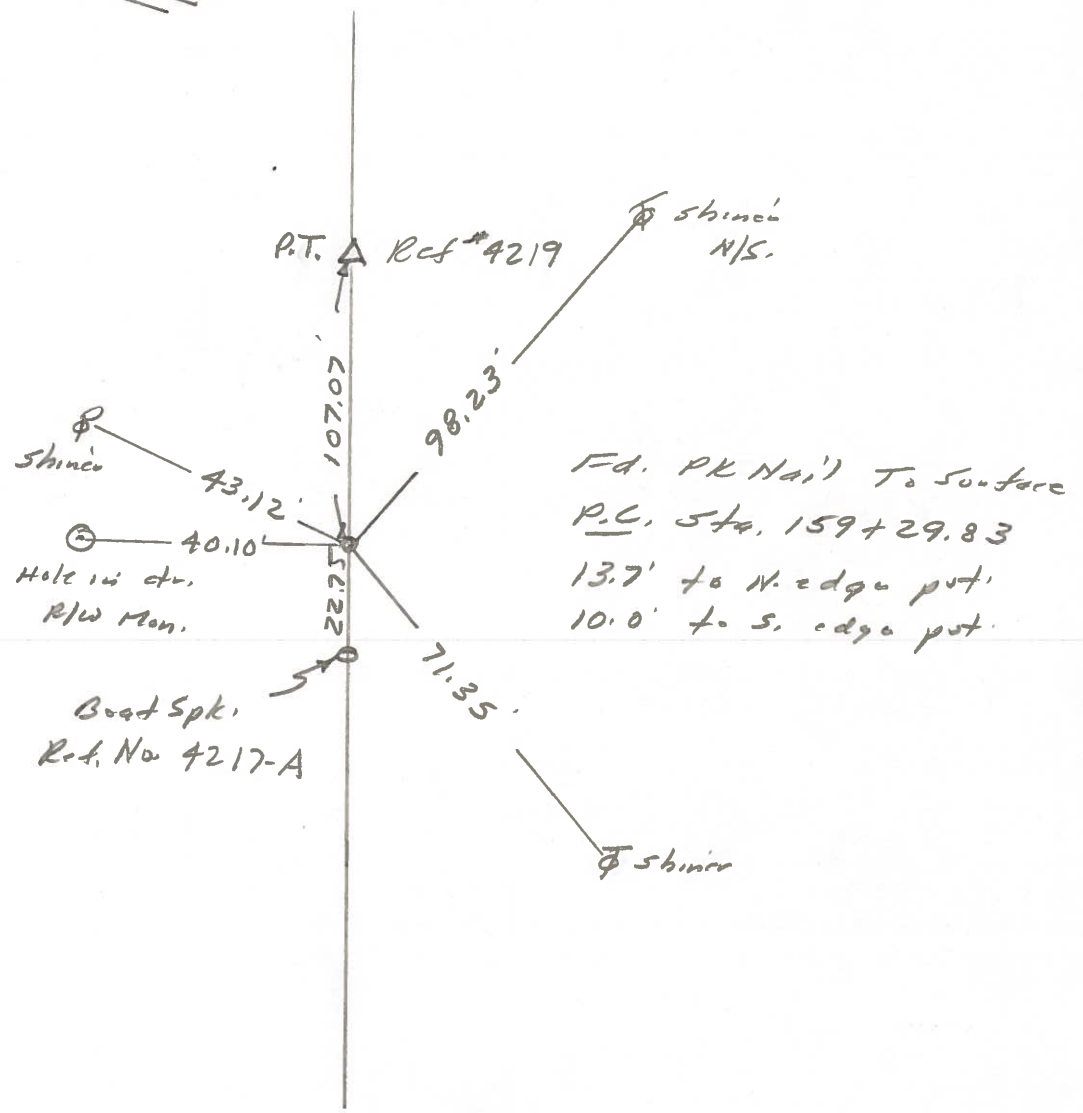
Personnel L. Stone



R. Michalak
P. Neuser
D. Curtis
D. Gramata

18

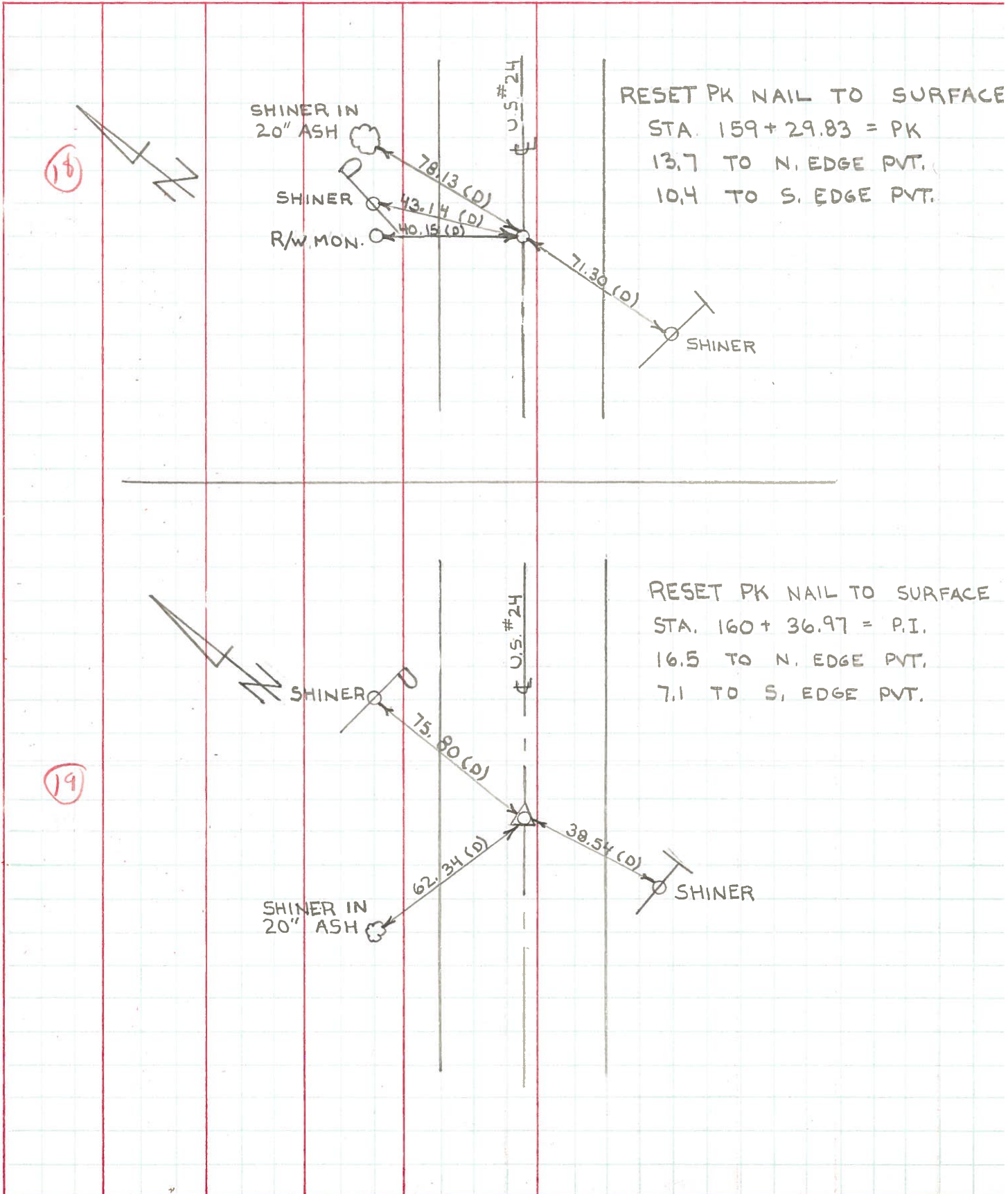
REF NO. 4218



PERSONNEL	TITLE	PERSONNEL	TITLE
W. DENNO			
D. CURTIS			
D. STEVENS			
R. BRANNAN			

COUNTY LUCAS DATE JULY 6, 1971
 S. R. U.S. # 24 WEATHER SUNNY - MILD
 SEC. _____ TEMP. 75±

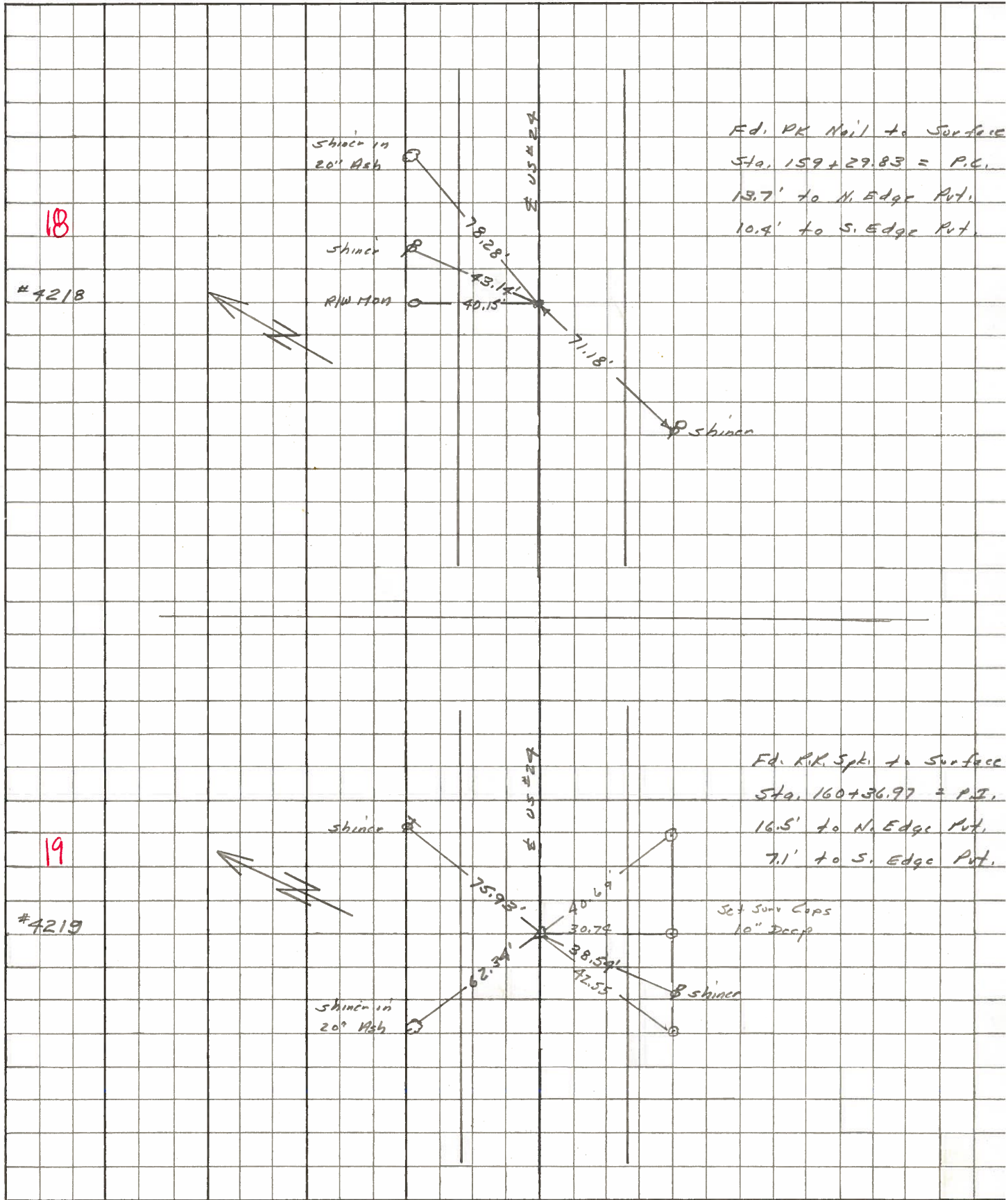
DESCRIPTION _____ REFERENCES TO CONTROL POINTS _____ JOB NO. _____
 LEFT CENTER LINE RIGHT



PERSONNEL	TITLE	PERSONNEL	TITLE
Stone	Notes		
Beck	Flag		
Michalate	Tape		
Schroder	Tape		

COUNTY Lucas DATE May 68
 S. R. # 29 WEATHER Fair
 SEC. _____ TEMP. _____

DESCRIPTION References to Control Points JOB NO. _____
 LEFT CENTER LINE RIGHT



PERSONNEL TITLE PERSONNEL TITLE

COUNTY Lucas DATE 3 Feb 66

Starr _____
Beck _____

S. R. #24 WEATHER cl

Brindley _____
Schröder _____

SEC. _____ TEMP. _____

DESCRIPTION LEFT CENTER LINE RIGHT JOB NO.

DESCRIPTION	LEFT	CENTER LINE	RIGHT	JOB NO.
✓ 140+29.05 = P.C.		76.58'	N.W. To Skinn in P.P. (D)	
	Set PK Nail	59.16'	S.E. To Skinn in T.P. (D)	
14	To Surface	55.70'	S.W. To "4" in str B Hom Step (D)	
✓ 141+20.95 - Δ		43.60'	N. To Skinn in P.P. (D)	
	Ed. P.P. Spk.	88.52	S.E. To Skinn in ^{12" Ash} P.P. (D)	
15	To Surface	64.39'	S.W. To Skinn in T.P. (D)	
✓ 143+19.89 = P.T.		95.97'	N.E. To " " (D)	
	Set PK Nail	91.60'	S.E. To " " (D)	
16	To Surface	72.12'	S.W. To " " (D)	
✓ 147+23.15 = P.I. (Hartman Rd.)		54.44	N.E. To " " in P.P. (D)	
	Ed. P.P. Spk.	41.52	N.W. To " " P.P. (D)	
17	To Surface	75.79'	S.W. To " " (D)	
		72.09	S.E. " " " " (D)	
		97.15'		
✓ 159+29.83 = P.C.		78.28	N.E. To Skinn in 20" Ash (D)	
	Set PK Nail	70.15	N. To R/W Monument (D)	
18	To Surface	71.18	S.W. To Skinn in P.P. (D)	
✓ 160+36.97 = P.I.		75.93'	N.E. To Skinn in T.P. (D)	
	Ed. P.P. Spk.	65.63	N. To S.W. Cor. Res. (Blk) (D)	
19	To Surface	62.34'	N.W. To Skinn in 20" Ash (D)	
		38.54'	S.W. To Skinn in P.P. (D)	
✓ 180+64.40 = P.I.		71.19'	N.E. To Skinn in 8" Apple (P)	
	Ed. P.P. Spk.	42.55'	N.W. To Skinn in P.P. (P)	
20	To Surface	76.88'	S.E. To Skinn in T.P. (P)	

PERSONNEL	TITLE	PERSONNEL	TITLE
Silvester			
#			
Crew			

COUNTY Lucas DATE 1958
 S. R. #24 WEATHER _____
 SEC. He-Luc.-Water TEMP. _____

DESCRIPTION	LEFT	CENTER LINE	RIGHT	JOB NO.
-------------	------	-------------	-------	---------

