

# O.D.O.T. DISTRICT 2 SURVEY OFFICE

PERSONNEL

REFERENCE NO. 19

SHEET 24 OF 68

NOTES S. HOSS

H.C. B. VAN DUSEN

DATE 5-28-97

ROUTE US-24

R.C. K. MOSER

WEATHER PARTLY CLOUDY

COUNTY Lucas

TEMP. 161°F

TOWNSHIP Providence

SECTION 33

T. 6 N. R. 9 E.

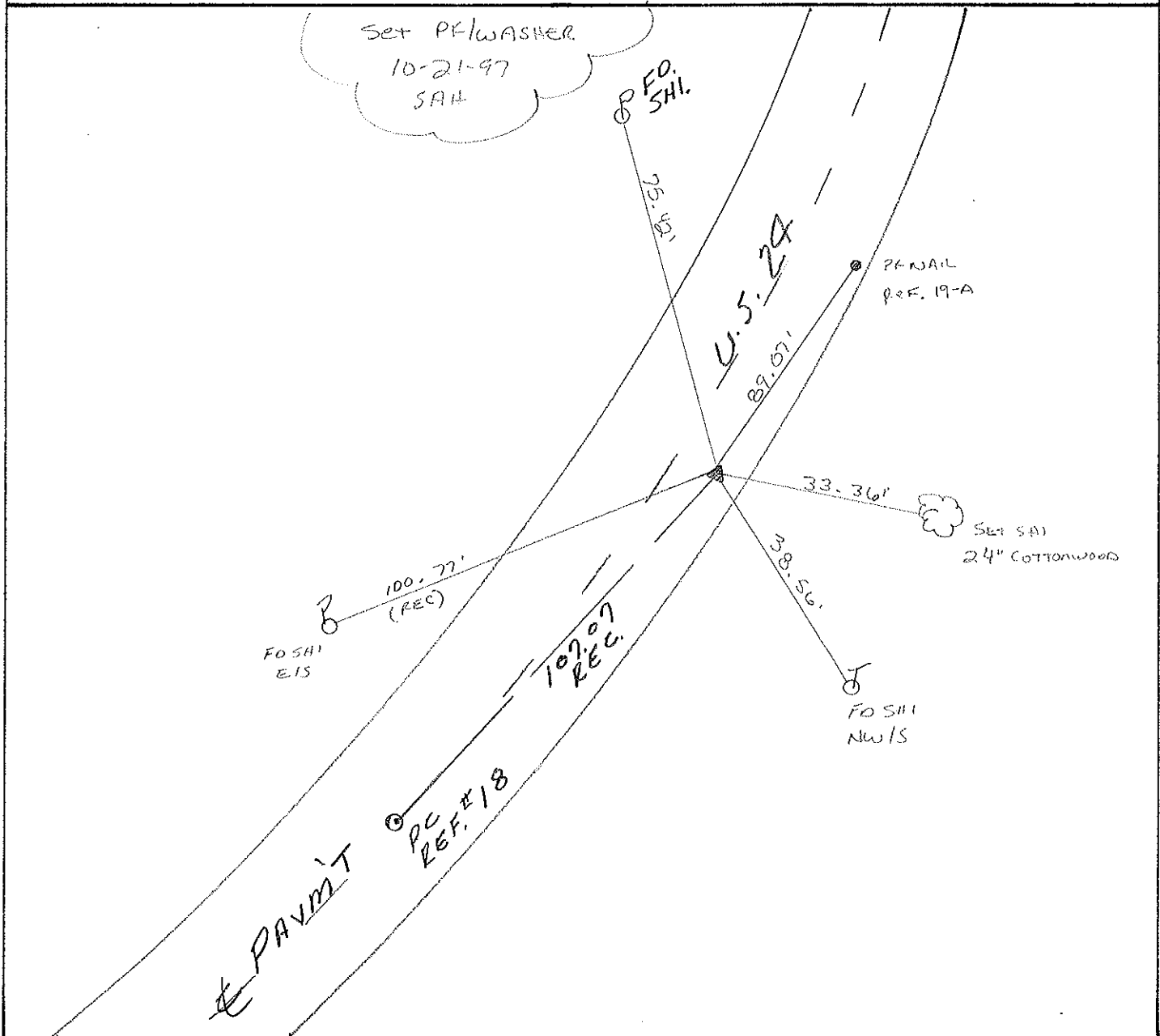
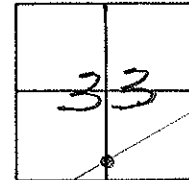
TYPE MONUMENT PK NAIL & WASHER

ON SURFACE - BELOW YES

LEFT - C PAV'T. - RIGHT 4.6 RT

7.2' TO RT. EDGE PAVEMENT

S.L.M. 160+37



# O.D.O.T. DISTRICT 2 SURVEY OFFICE

PERSONNEL

REFERENCE NO. 19

SHEET 17 OF       

NOTES VAN DUSEN

H.C. MOSEK

R.C. SLOVAK

HERMILLER P

DATE 10-7-94

WEATHER SUNNY

TEMP. +70° F

Set P.K./WASHER  
5-15-95  
C.L.

ROUTE US #24

COUNTY LUCAS

TOWNSHIP Providence

SECTION 33

T6 N R 9 E

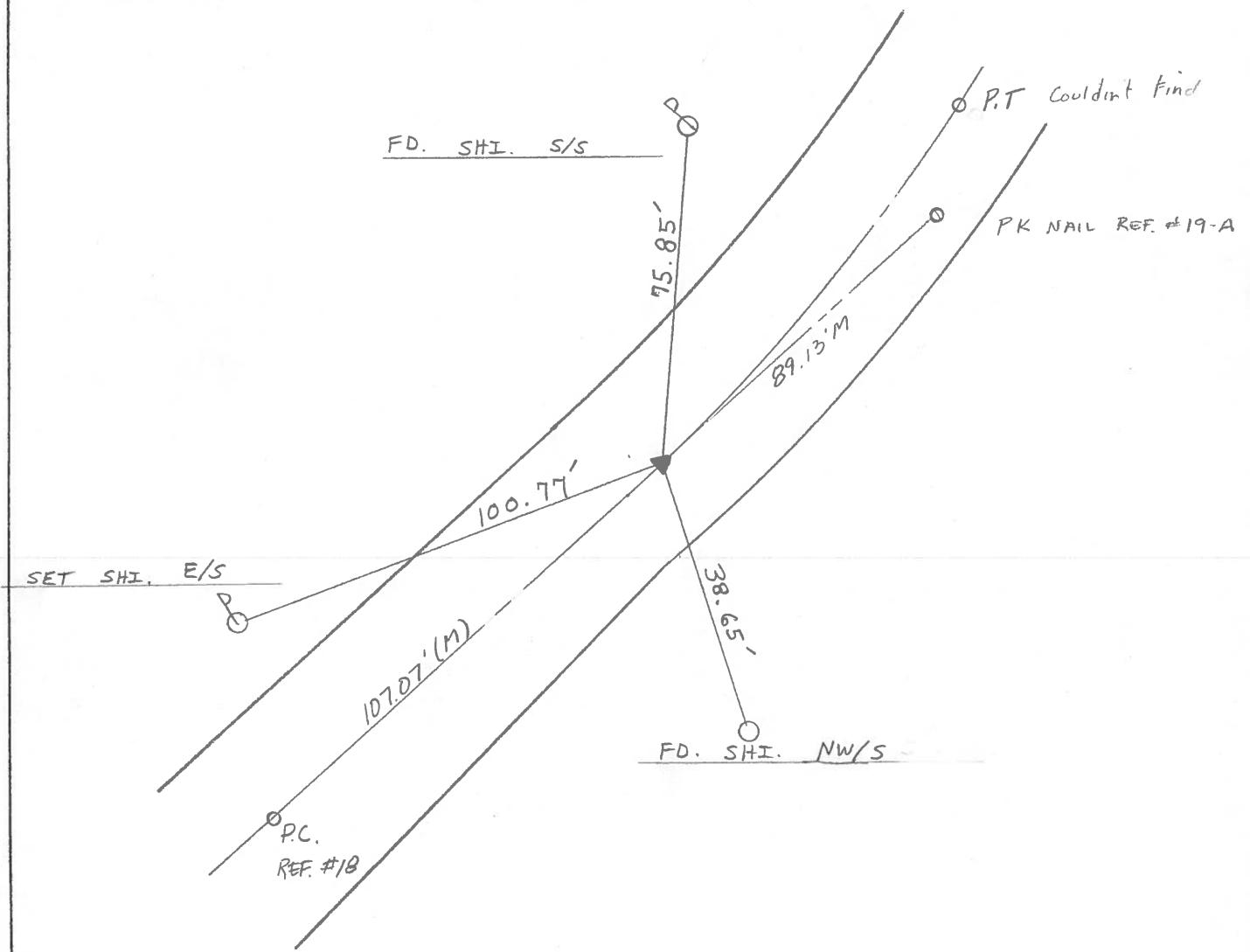
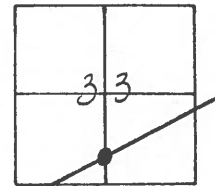
TYPE MONUMENT PK NAIL

ON SURFACE - ~~BELOW~~ AT SURFACE

~~LEFT - C~~ PAV'T. - RIGHT 4.6 RT 9

6.8 TO RT EDGE PAVEMENT

S.L.M. 159 + 91



# O.D.O.T. DISTRICT 2 SURVEY OFFICE

PERSONNEL

REFERENCE NO. 19

SHEET 17 OF     

NOTES L. Stone

H.C. D. Curtis

R.C. J. Householder

DATE 29 Aug. 89

WEATHER Cloudy

TEMP. 72°

ROUTE US # 24

COUNTY Lucas

TOWNSHIP Providence

SECTION 33

T      R     

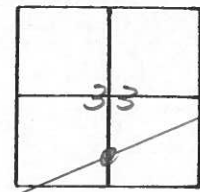
TYPE MONUMENT PK Nail

ON SURFACE - BELOW Surface

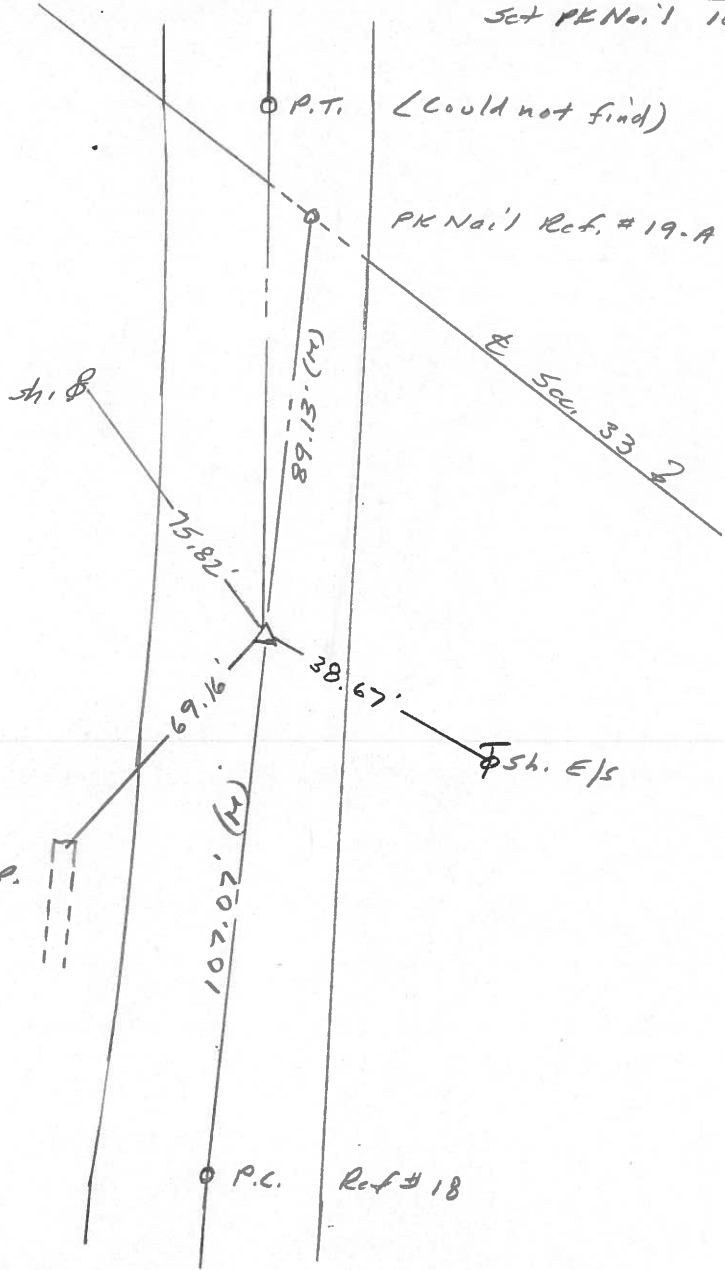
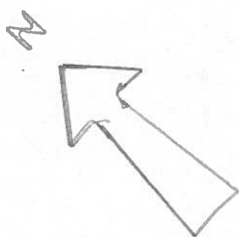
LEFT -      PAV'T. - RIGHT     

     TO      EDGE PAVEMENT

S.L.M. 160+00



Set PK Nail 10/13/89 1125



chiseled "+"  
Top 12" C.P.

Q.D.O.T. DISTRICT 2 SURVEY OFFICE

Sht. 23 of     

County Lucas ~~SR.~~ US #24

Date 9 July 1980

Township Providence co

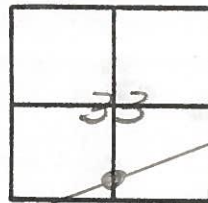
Weather Fair

Section 33

Temp. 76°

T    N, R    E

Personnel L. Stone



19

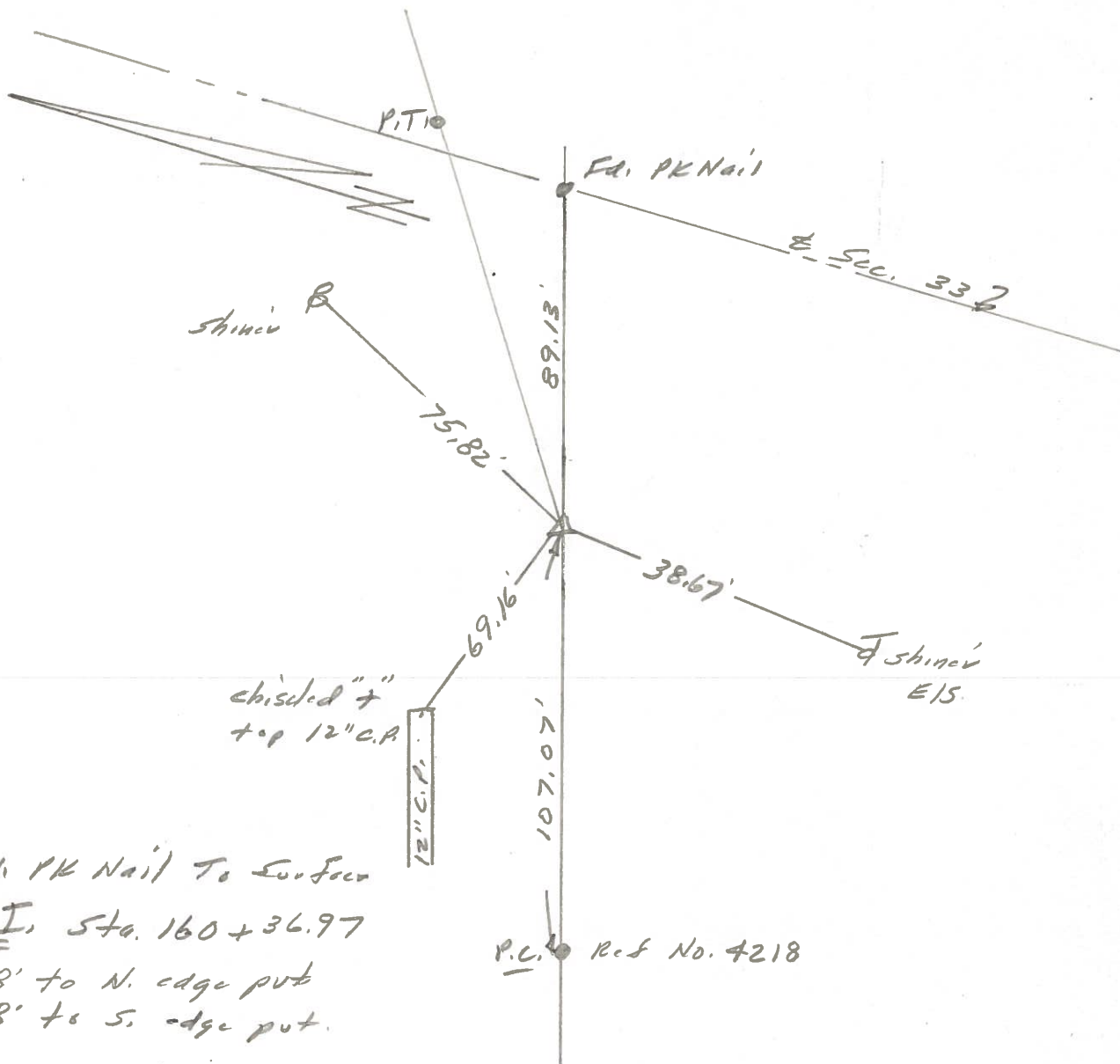
R. Michalak

P. Neuser

D. Curtis

~~D. Granata~~

REF. NO. 4219



Fd. PK Nail To Surface

P. I. Sta. 160 + 36.97

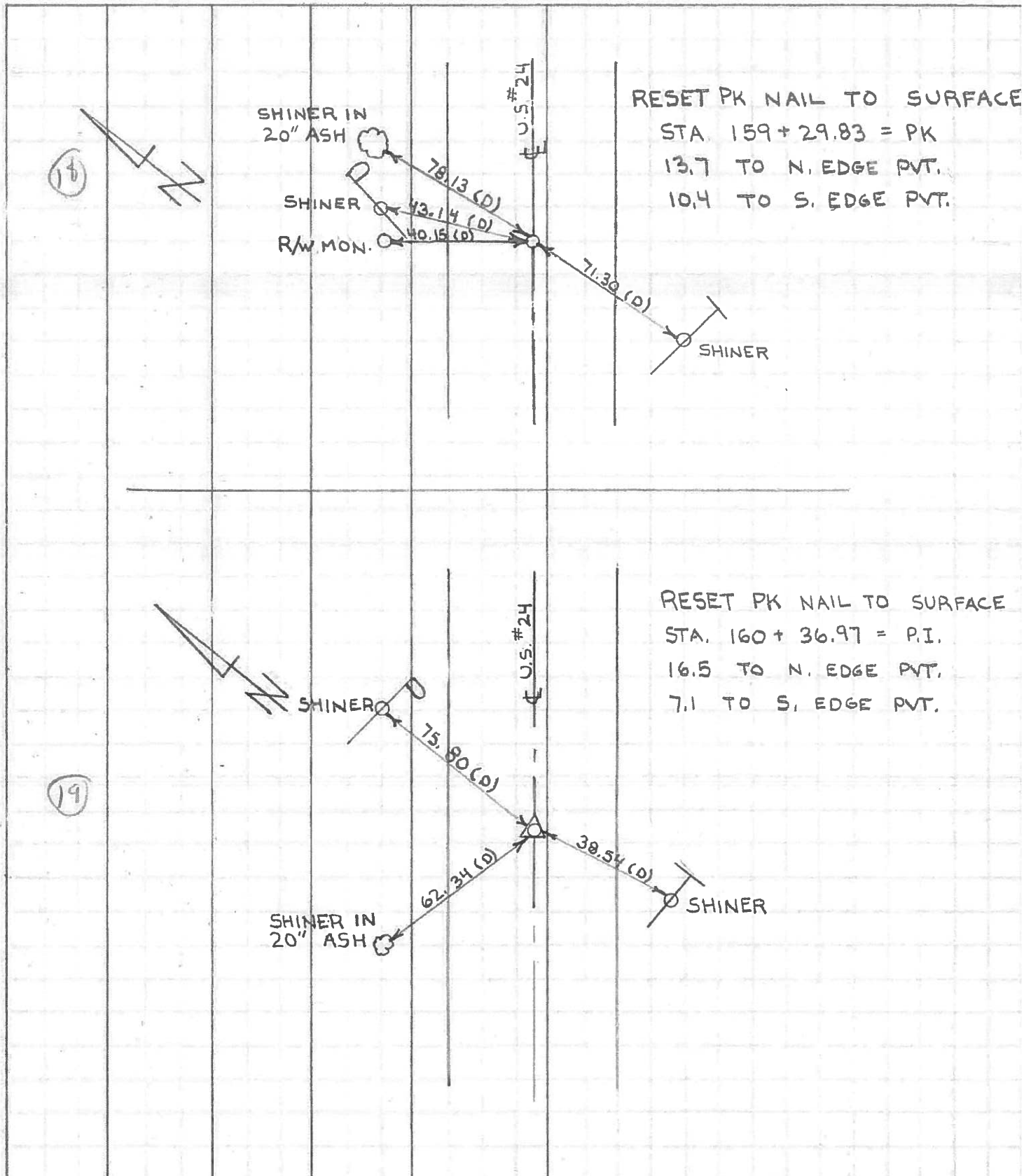
16.8' to N. edge put

6.8' to S. edge put.

P.C. Ref No. 4218

PERSONNEL	TITLE	PERSONNEL	TITLE	COUNTY	LUCAS	DATE	JULY 6, 1971
W. DENNO				S. R.	US. # 24	WEATHER	SUNNY - MILD
D. CURTIS				SEC.		TEMP.	75±
D. STEVENS							
R. BRANNAN							

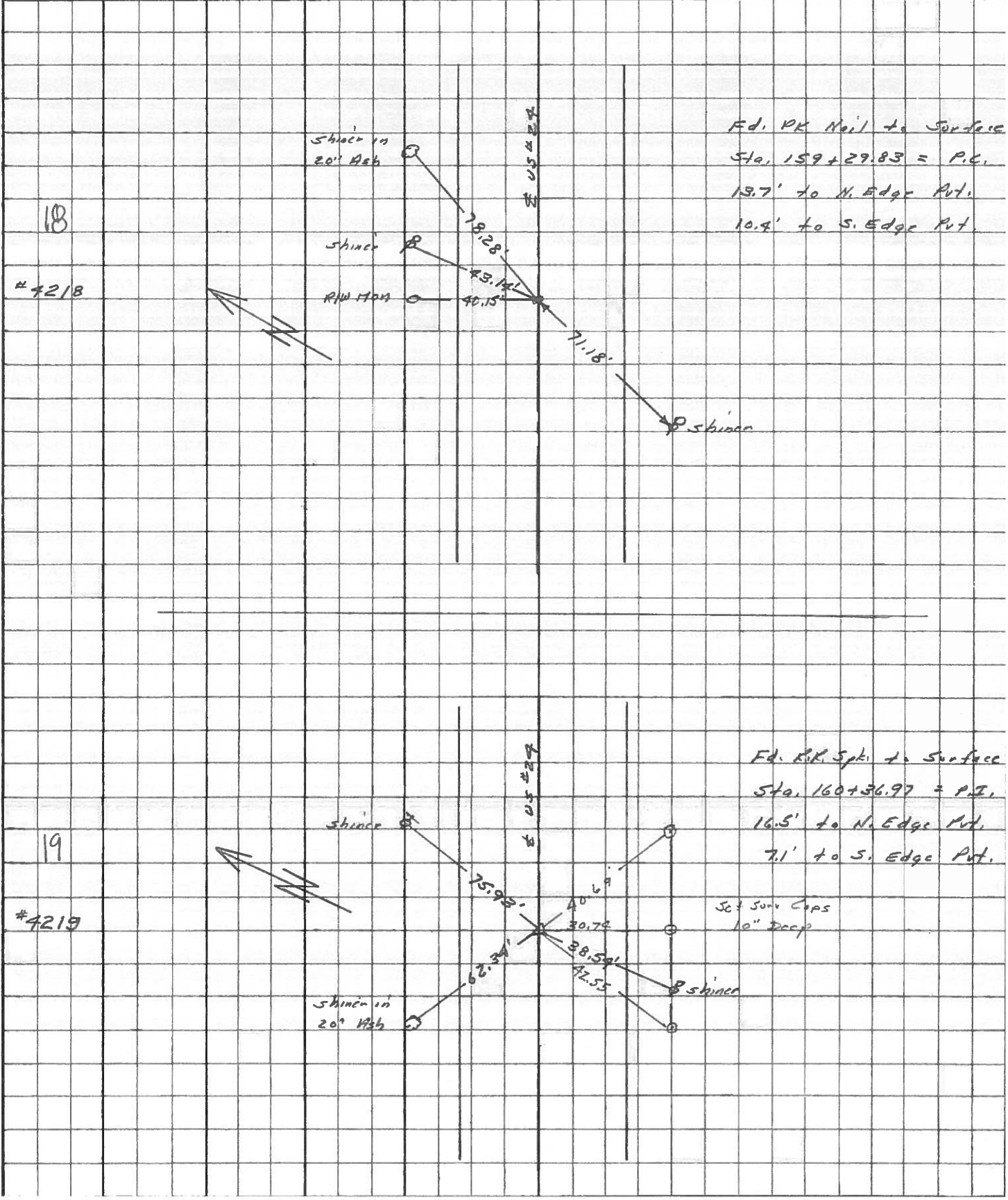
DESCRIPTION	REFERENCES TO CONTROL POINTS	JOB NO.
	LEFT CENTER LINE RIGHT	



PERSONNEL	TITLE	PERSONNEL	TITLE
Stone	Notes		
Beck	Flag		
Michalake	Tape		
Schroeder	Tape		

COUNTY Lucas DATE May 68  
 S. R. # 29 WEATHER Fair  
 SEC. \_\_\_\_\_ TEMP. \_\_\_\_\_

DESCRIPTION References to Control Points JOB NO. \_\_\_\_\_  
 LEFT CENTER LINE RIGHT



PERSONNEL	TITLE	PERSONNEL	TITLE	COUNTY	Lucas	DATE	3 Feb 66
<u>Stoner</u>				S. R.	#24	WEATHER	cl
<u>Beck</u>				SEC.		TEMP.	
<u>Bridley</u>							
<u>Schrader</u>							

DESCRIPTION	LEFT	CENTER LINE	RIGHT	JOB NO.
✓ 140+29.05 = P.C. Set PK Nail 14 To Surface		76.58' 59.16' 55.70'	N.W. To Shiner in P.P. (D) S.E. To Shiner in T.P. (D) S.W. To "4" in str B Hom Step (D)	
✓ 141+20.95 - Δ Ed. P.R. Spt. 15 To Surface		43.60' <del>88.52</del> <del>73.54</del> 64.39'	N. To Shiner in P.P. (D) S.E. To Shiner in 12" Ash (D) S.W. To Shiner in T.P. (D)	
✓ 143+19.89 = P.T. Set PK Nail 16 To Surface		95.97' 91.60' 72.12'	N.E. To " " (D) S.E. T " (D) S.W. T " (D)	
✓ 147+23.15 = P.I. (Hartman Rd.) Ed. P.R. Spt. 17 To Surface		54.44 <del>51.52</del> 75.79' 72.09 77.15'	N.E. T in P.P. (D) N.W. To " P.P. (D) S.W. To S " (D) S.E. " " " " (D)	
✓ 159+29.83 = P.C. Set PK Nail 18 To Surface		78.28 40.15 71.18	N.E. To Shiner in 20" Ash (D) N. To R/W Monument (D) S.W. To Shiner in P.P. (D)	
✓ 160+36.97 = P.I. Ed. P.R. Spt. 19 To Surface		75.93' 65.63 62.34' 38.54'	N.E. To Shiner in T.P. (D) N. To S.W. Cor. Res. (Blk) (D) N.W. To Shiner in 20" Ash (D) S.W. To Shiner in P.P. (D)	
✓ 180+64.40 = P.I. Ed. P.R. Spt. 20 To Surface		41.19' 42.55' 76.88'	N.E. To Shiner in 8" Apple (P) N.W. To Shiner in P.P. (P) S.E. To Shiner in T.P. (P)	

PERSONNEL TITLE PERSONNEL TITLE  
 Silvester \_\_\_\_\_  
 # \_\_\_\_\_  
 crew \_\_\_\_\_

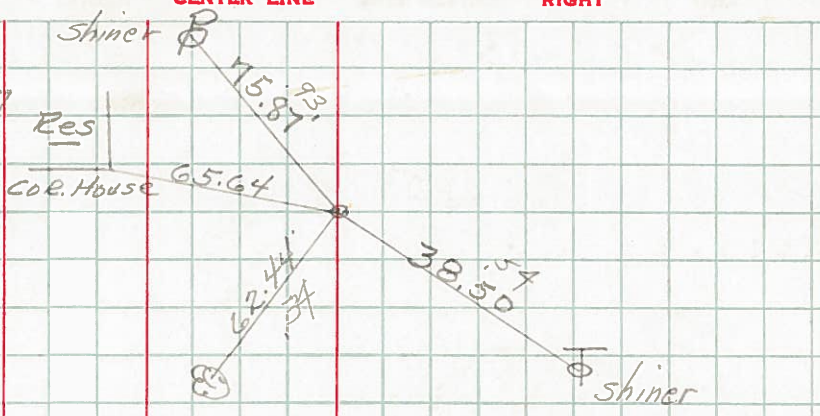
COUNTY Lucas DATE 1958  
 S. R. #24 WEATHER \_\_\_\_\_  
 SEC. He-Luc-Waterville TEMP. \_\_\_\_\_  
 (0.00)

DESCRIPTION LEFT CENTER LINE RIGHT JOB NO.

✓

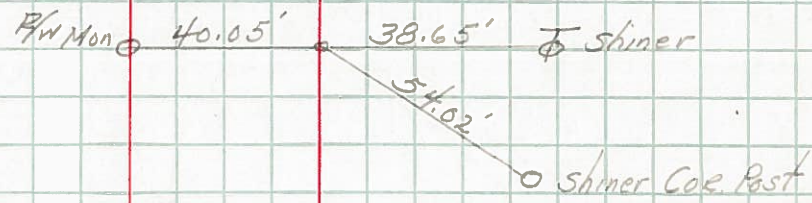
P.I. Sta. 160+36.97  
 R.R. Spk. Set

19



✓

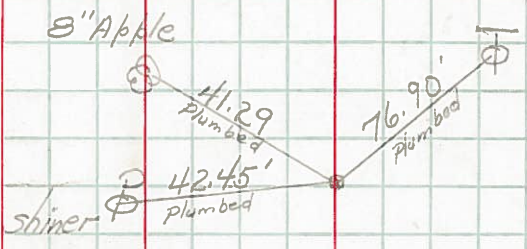
P.T. 161+44.60



✓

P.I. Sta. 180+64.40  
 R.R. Spk. Set

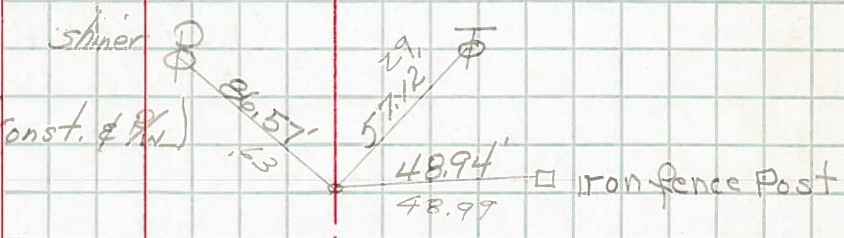
20



✓

P.I. Sta. 189+13.94 (const. # P/W)  
 R.R. Spk. Set

21



✓

P.O.T. Sta. 190+12.70  
 R.R. Spk. # S.R.#295

22

