

O.D.O.T. DISTRICT 2 SURVEY OFFICE

PERSONNEL

REFERENCE NO. 19-A SHEET 25 OF 68

NOTES S. AUSS

H.C. B. VAN DUSEN

R.C. B. CORDES

A C. COV

DATE 6-5-97

WEATHER CLOUDY/RAIN

TEMP. +58°F

ROUTE US-24

COUNTY LUCAS

TOWNSHIP PROVIDENCE

SECTION 33

T. 6 N. R. 9 E

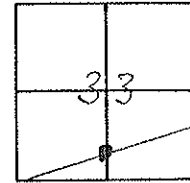
TYPE MONUMENT PK/WAIL

ON SURFACE - BELOW ON SURFACE

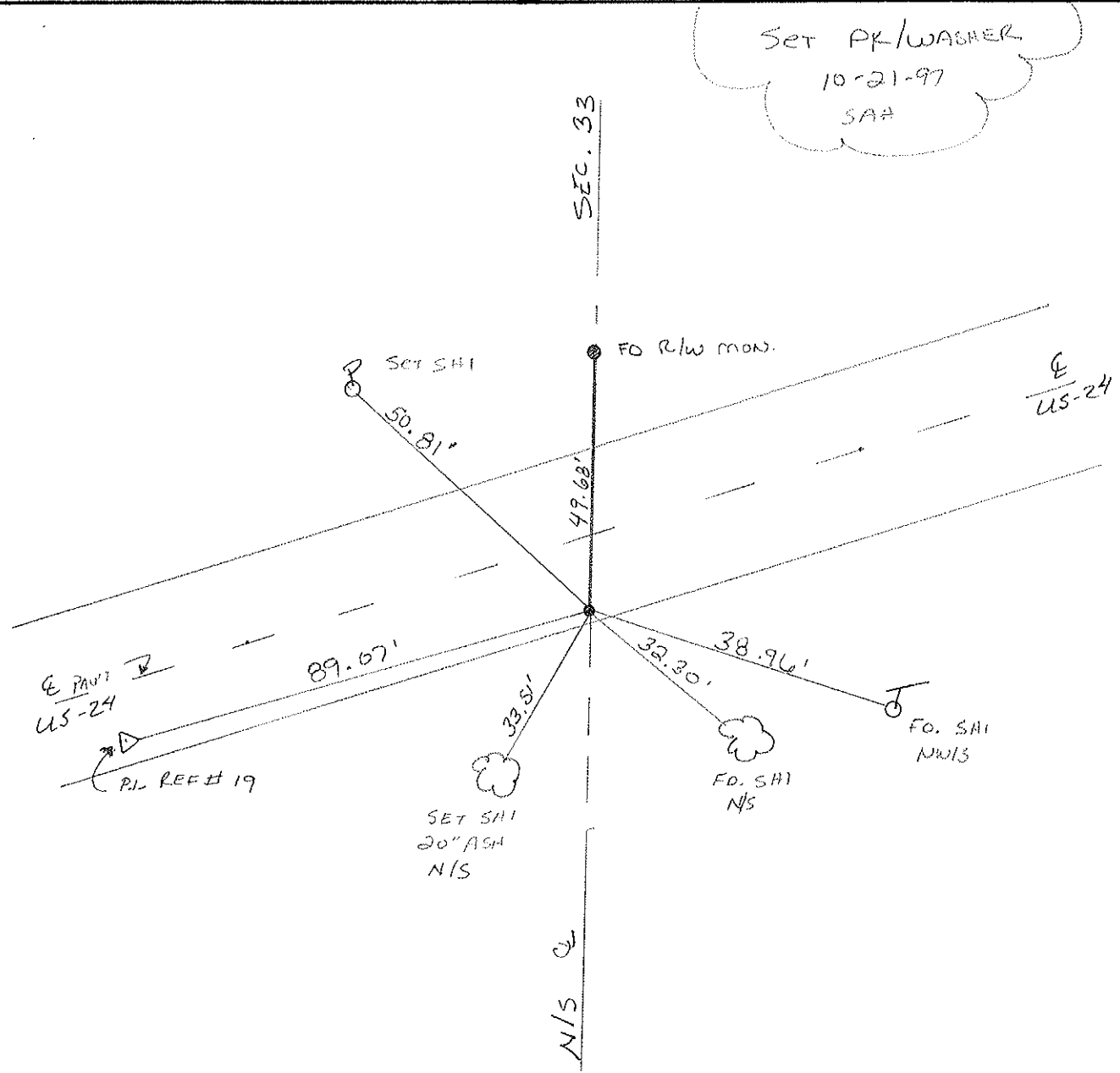
LEFT - 0 PAV'T. - RIGHT 9.4' RT

2.4 TO RT EDGE PAVEMENT

S.L.M. 161+27



SET PK/WASHER
10-21-97
SAA



O.D.O.T. DISTRICT 2 SURVEY OFFICE

PERSONNEL _____

REFERENCE NO. 19-A

SHEET 18 OF _____

NOTES LOHRKE

H.C. CANTERBURY

R.C. CORDES

DATE 10-11-94

WEATHER CLEAR

TEMP. +45° F

Set P.K. / WASHER
5-15-95
C.L.

ROUTE US #24

COUNTY LUCAS

TOWNSHIP PROVIDENCE

SECTION 33

T 6 N R 9 E

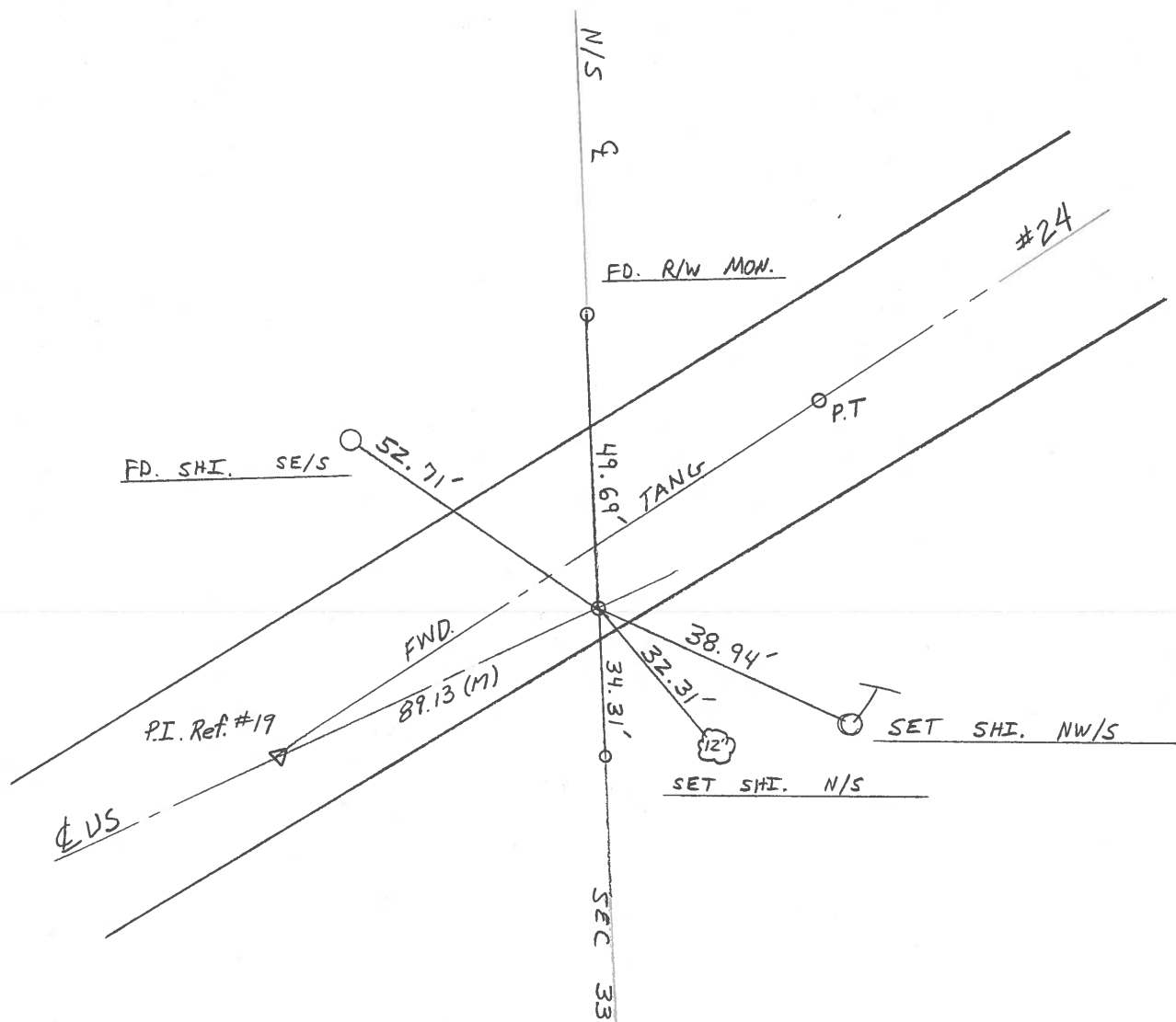
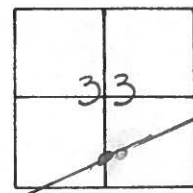
TYPE MONUMENT PK NAIL

ON SURFACE - ~~BELOW~~ AT SURFACE

~~LEFT - & PAV'T.~~ - RIGHT 9.0 RT &

1.8 TO RT EDGE PAVEMENT

S.L.M. 160 + 81



O.D.O.T. DISTRICT 2 SURVEY OFFICE

PERSONNEL

REFERENCE NO. 19-1A

SHEET 18 OF

NOTES 1. Stone

H.C. D. Curtis

R.C. J. Householder

DATE 29 Aug. 89

WEATHER Cloudy

TEMP. 74°

ROUTE US #24

COUNTY Lucas

TOWNSHIP Providence

SECTION 33

T R

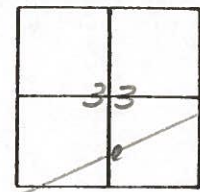
TYPE MONUMENT PK Nail

ON SURFACE - BELOW Surface

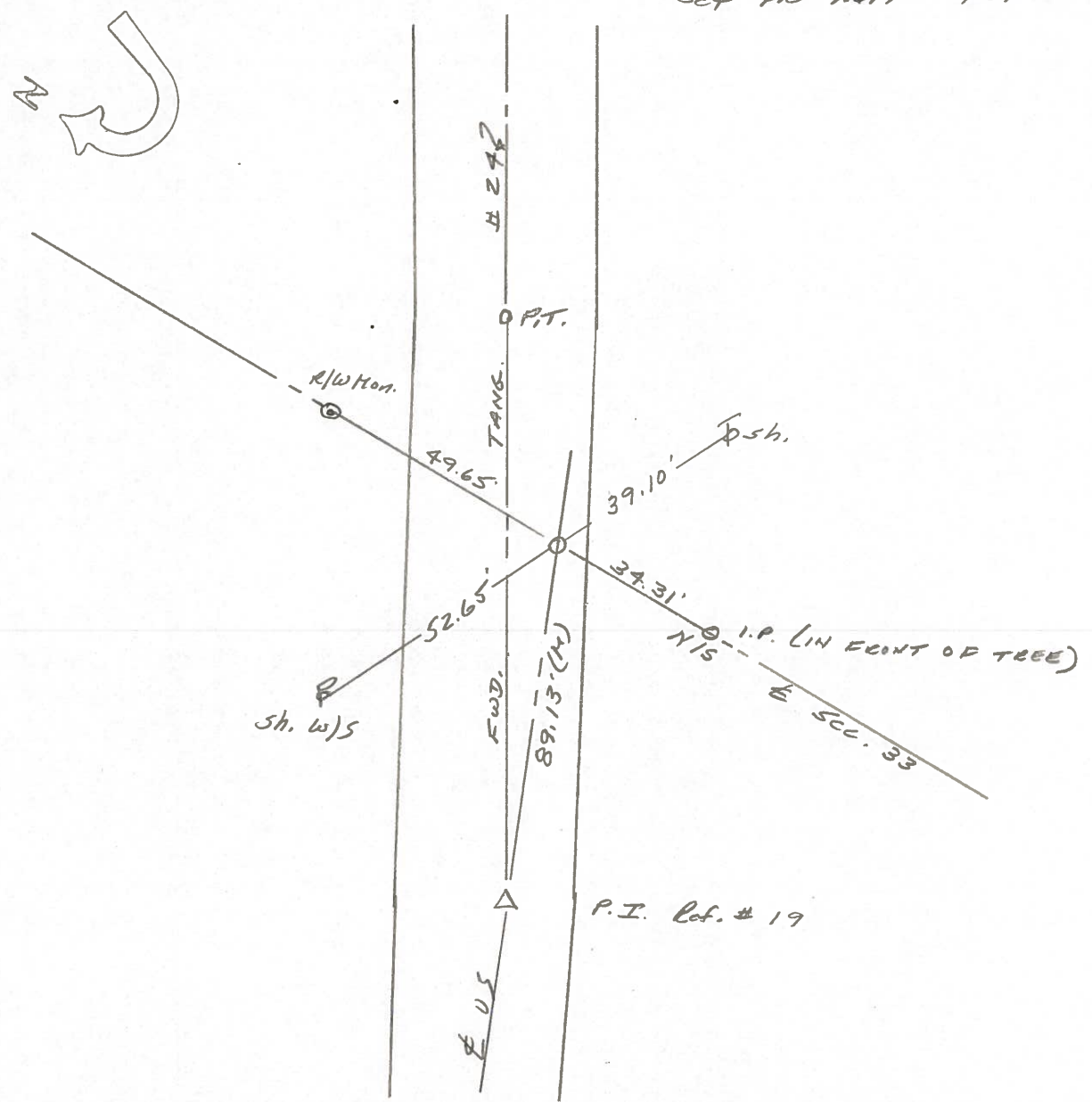
LEFT - \odot PAV'T. - RIGHT

 TO EDGE PAVEMENT

S.L.M. 165 + 89



Set PK Nail 10/13/89 IRS



O.D.O.T. DISTRICT 2 SURVEY OFFICE

Sht. 24 of

County Lucas ~~S.R.~~ US #24

Township Providence

Section 33

T N, R E

Personnel I. Stone

R. Michalak

P. Neuser

D. Curtis

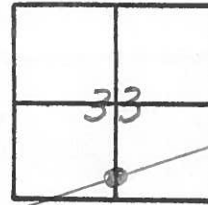
D. Granaty

19A

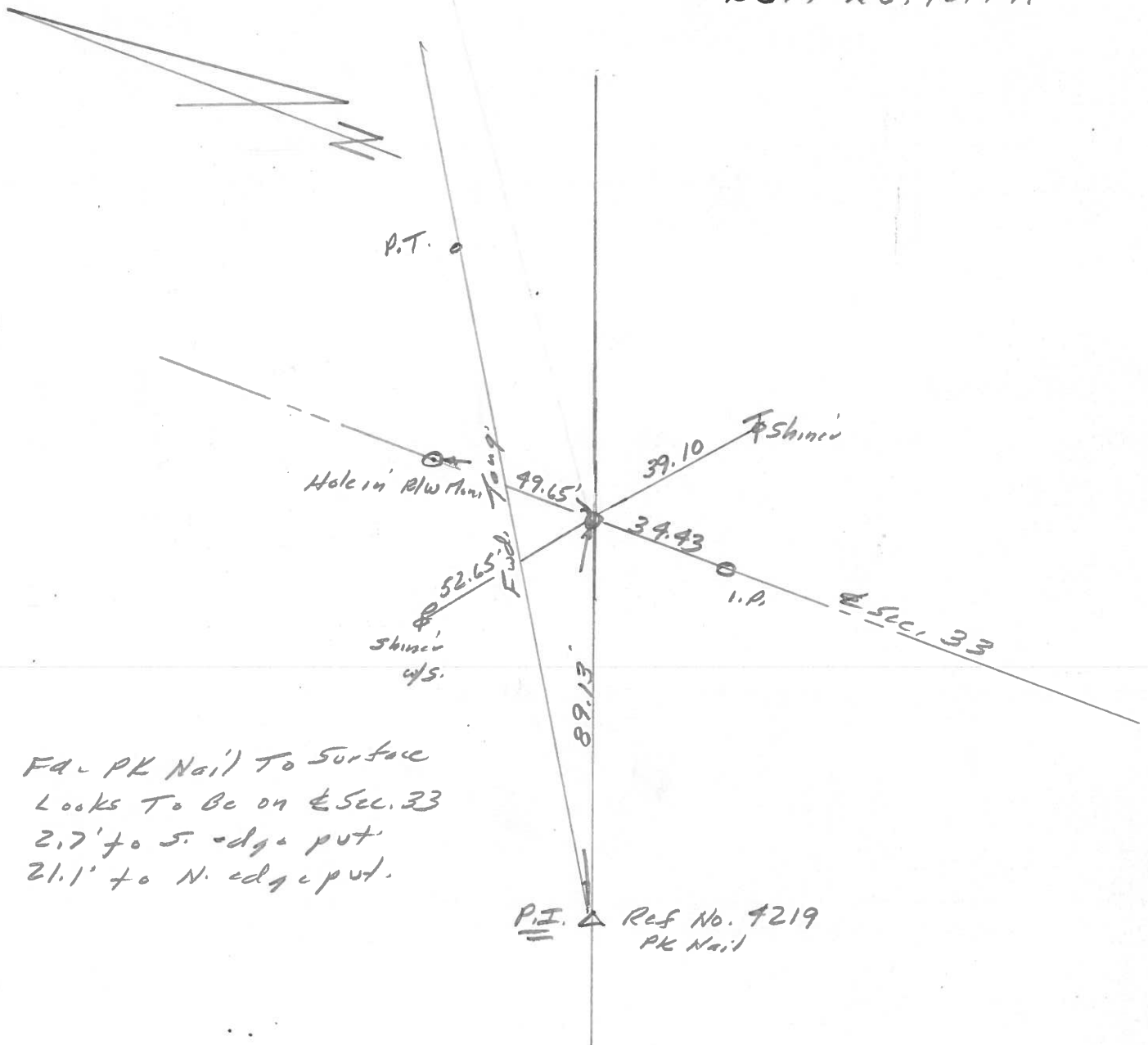
Date 9 July 1980

Weather Fair

Temp. 76°



REF. NO. 4219-A



Fd. PK Nail to surface
Looks to be on Sec. 33
2.7' to S. edge put
21.1' to N. edge put.

P.I. Δ Ref No. 4219
PK Nail