

O.D.O.T. DISTRICT 2 SURVEY OFFICE

PERSONNEL

REFERENCE NO. 20

SHEET 26 OF 68

NOTES S. AUSS

H.C. B. VAN DUSEN

DATE 6-2-97

ROUTE US-24

R.C. B. COOPER

WEATHER CLOUDY / RAIN

COUNTY Lucas

F C. COX

TEMP. +58.0 F

TOWNSHIP Providence

SECTION 33

T. 6 N. R. 9 E.

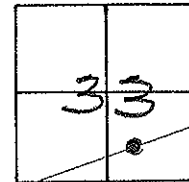
TYPE MONUMENT PK/WASHER

ON SURFACE - ~~BELOW~~ ON SURFACE

~~LEFT - & PAV'T. - RIGHT~~ ON &

12.2' TO LT EDGE PAVEMENT

S.L.M. 180+67



Record

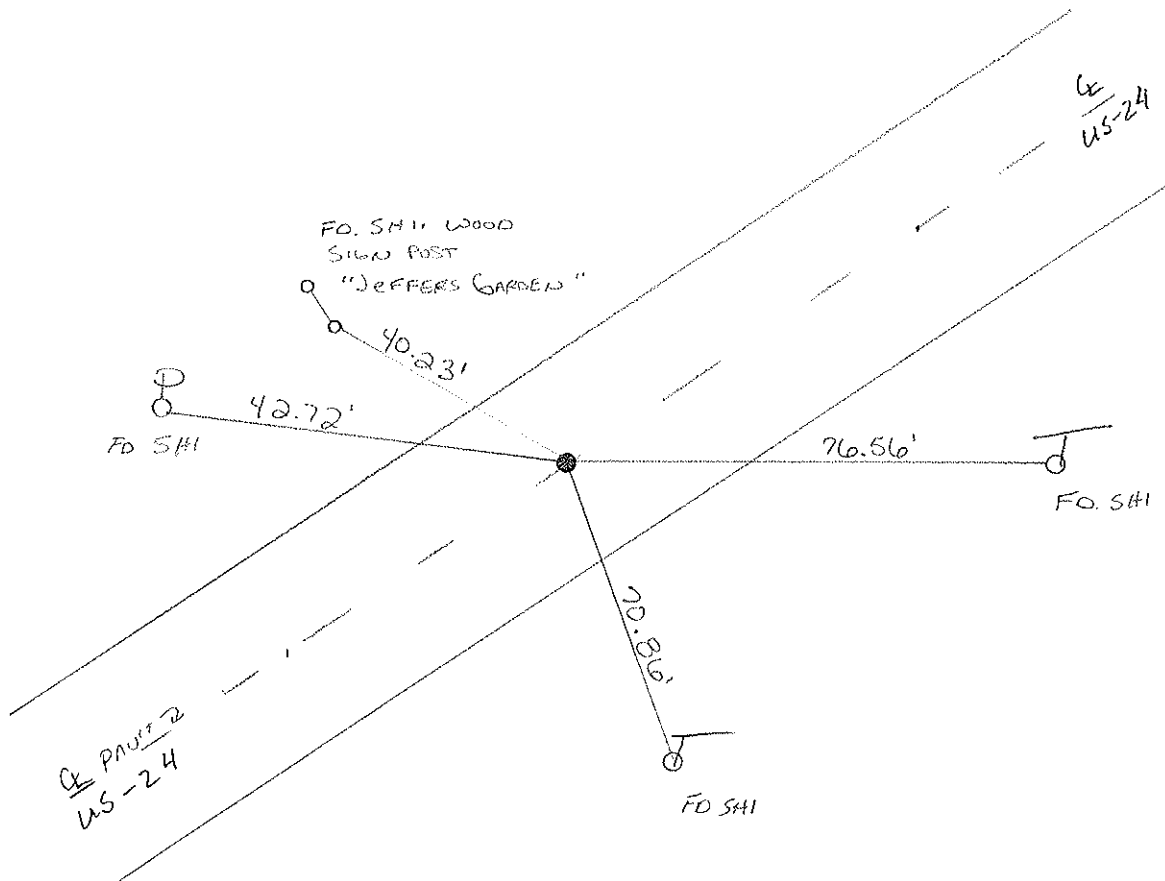
Fd Sm, RR Spk

10-21-97

SET PK/WASHER

10-21-97

SAH



O.D.O.T. DISTRICT 2 SURVEY OFFICE

PERSONNEL _____ REFERENCE NO. 20 SHEET 19 OF _____

NOTES VAN DUSIN

H.C. MOSER

R.C. CORDES

DATE 10-11-94

WEATHER CLEAR

TEMP. +55

ROUTE US #24

COUNTY LUCAS

TOWNSHIP PROVIDENCE

SECTION 33

T 6 N R 9 E

Set P.K. WASHER
5-15-95
C.L.

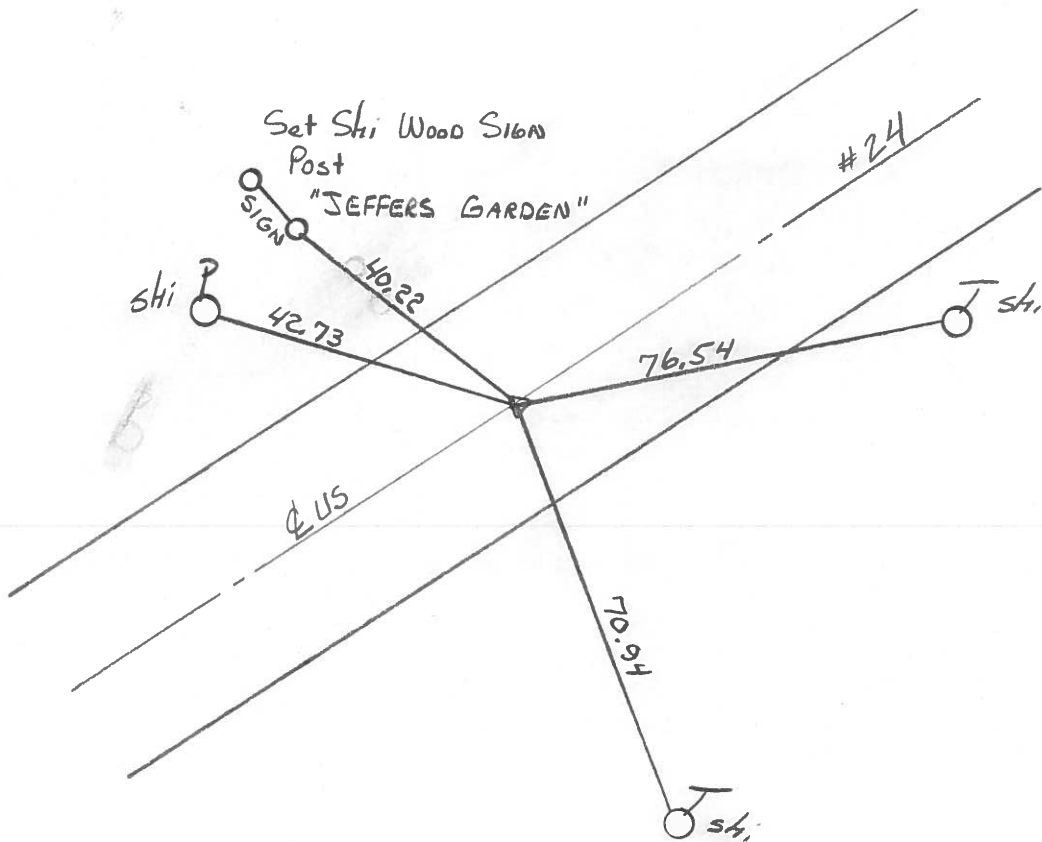
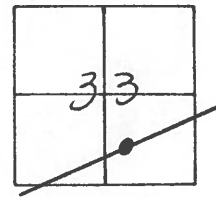
TYPE MONUMENT SMALL R.R. Spike

ON SURFACE - BELOW Yes

LEFT - CL PAV'T. - RIGHT 0.5

10.7 TO Lt EDGE PAVEMENT

S.L.M. 180 + 13



O.D.O.T. DISTRICT 2 SURVEY OFFICE

PERSONNEL

REFERENCE NO. 20

SHEET 19 OF

NOTES 1. Stone

H.C. D. Curtis

R.C. J. Houscholder

DATE 29 Aug. 89

WEATHER Cloudy

TEMP. 74°

ROUTE US #24

COUNTY LUCAS

TOWNSHIP Providence

SECTION 33

T R

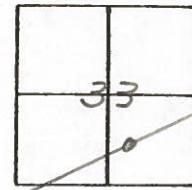
TYPE MONUMENT RR. Spk.

ON SURFACE - BELOW 3" deep

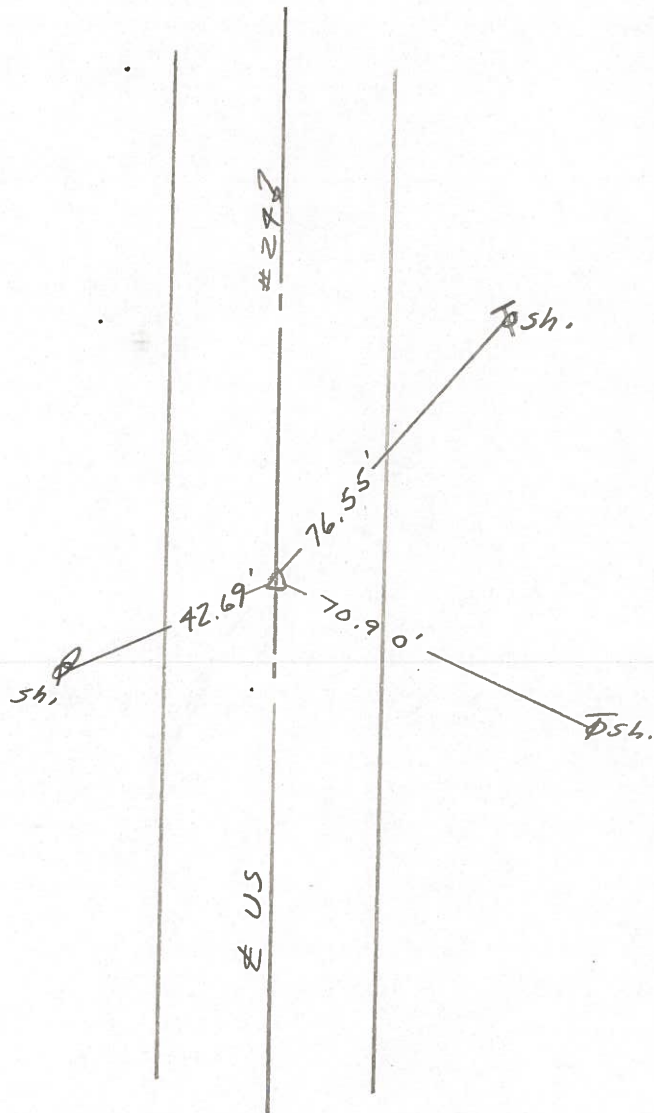
LEFT - ☉ PAV'T. - RIGHT

 TO EDGE PAVEMENT

S.L.M. 180+27



Set Small RR Spk. 10/13/89 IRS



O.D.O.T. DISTRICT 2 SURVEY OFFICE

Sht. 25 of

County Lucas S.R. US#24

Date 9 July 1980

Township Providence

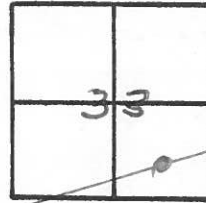
Weather Fair

Section 33

Temp. 77°

T N, R E

Personnel I. Stone



R. Michalak

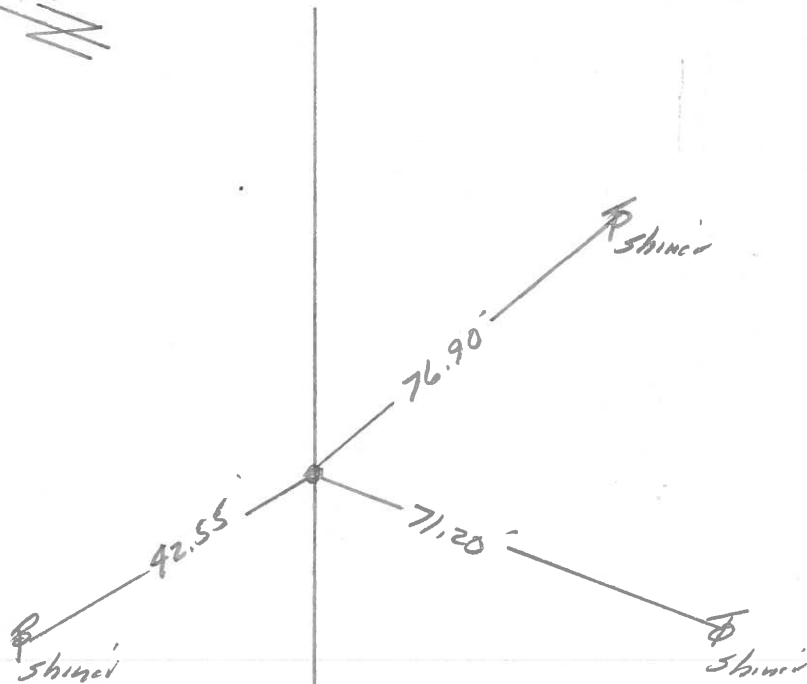
20

P. Neuser

D. Curtis

~~D. Granta~~

REF. NO. 4220



Fd. PK Nail to Surface

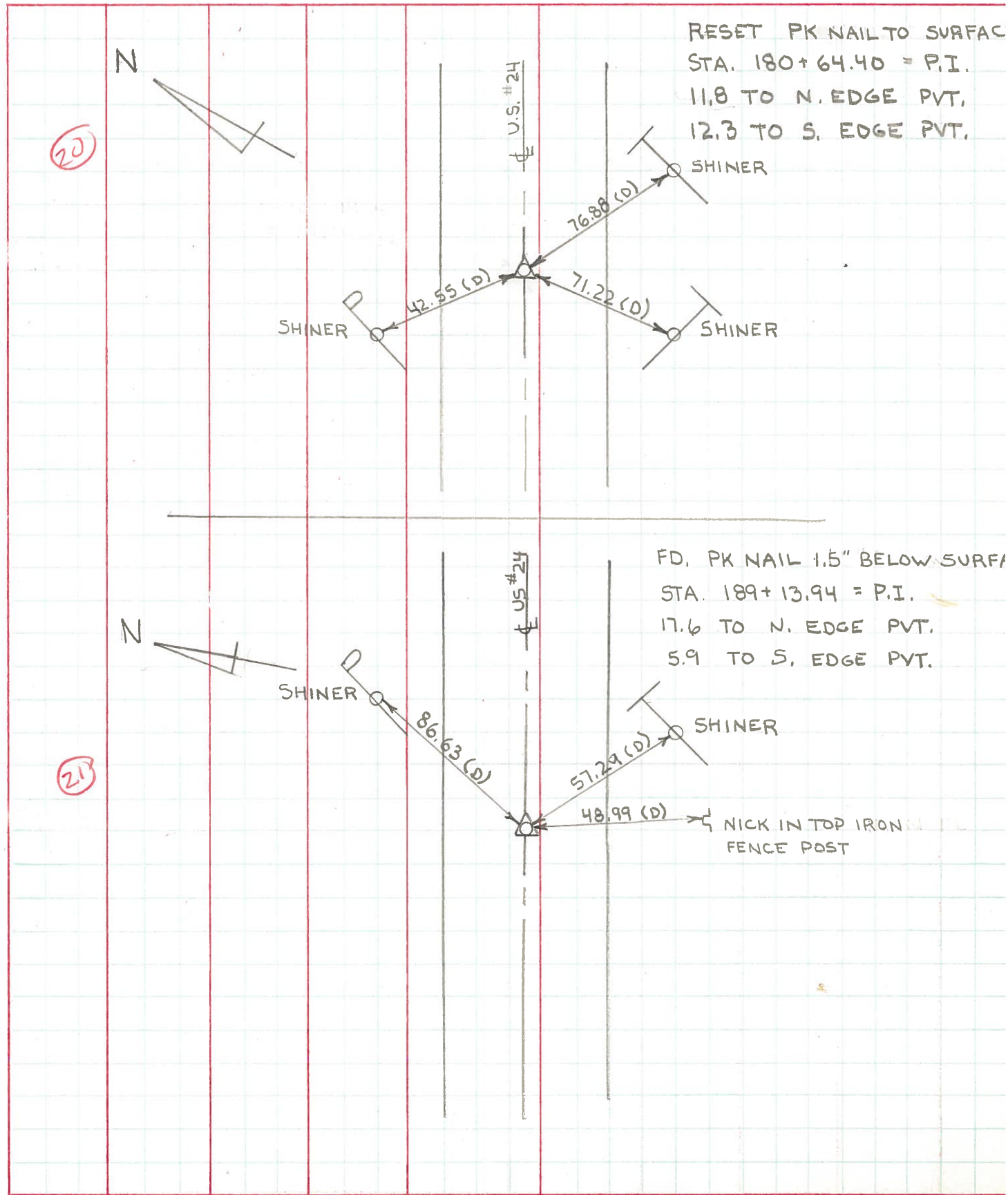
PI, Sta. 180+64.40

11.3' to N. edge put.

12.5' to S. edge put.

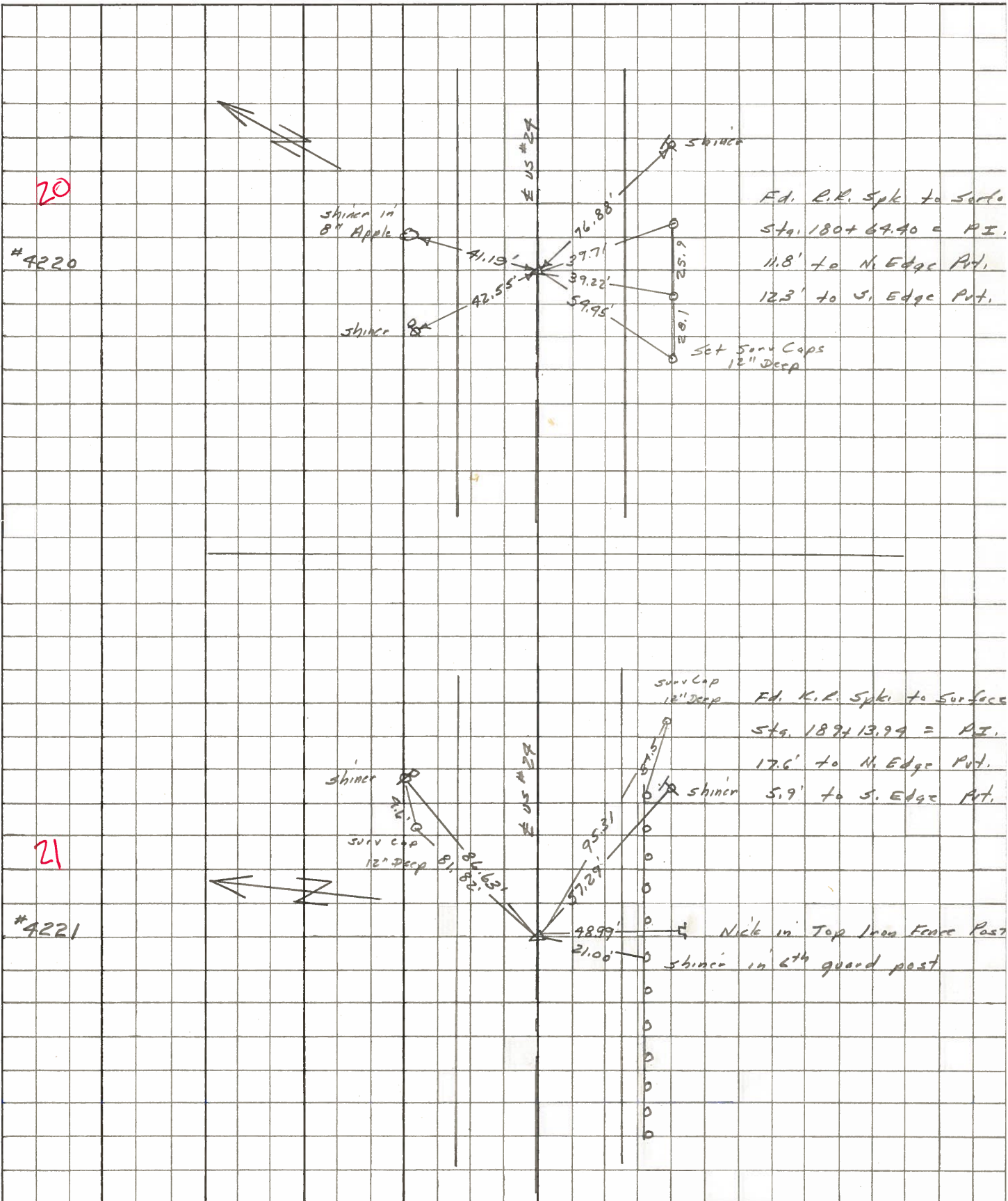
PERSONNEL	TITLE	PERSONNEL	TITLE	COUNTY	LUCAS	DATE	JULY 5, 1971
W. DENNO				S. R.	U.S. # 24	WEATHER	SUNNY - MIL
D. CURTIS				SEC.		TEMP.	75±
D. STEVENS							
R. BRANNAN							

DESCRIPTION	REFERENCES TO CONTROL POINTS	JOB NO.
	LEFT CENTER LINE RIGHT	



PERSONNEL	TITLE	PERSONNEL	TITLE	COUNTY	DATE
Stone	Notes			Lucas	July 68
Beck	Flag			S. R. # 27	WEATHER Fair
Michalak	Tape				
Schroder	Tape			SEC.	TEMP.

DESCRIPTION References to Control Points JOB NO.



PERSONNEL	TITLE	PERSONNEL	TITLE	COUNTY	Lucas	DATE	3 Feb 66
<u>Slone</u>				S. R.	#24	WEATHER	cl
<u>Beck</u>				SEC.		TEMP.	
<u>Bridley</u>							
<u>Schrader</u>							

DESCRIPTION	LEFT	CENTER LINE	RIGHT	JOB NO.
✓ 140+29.05 = P.C. Set PK Nail 14 To Surface		76.58' 59.16' 55.70'	N.W. To Shiner in P.P. (D) S.E. To Shiner in T.P. (D) S.W. To "4" in str B Hom Step (D)	
✓ 141+20.95 - Δ Ed. P.P. Spk. 15 To Surface		43.60' 88.52' 73.54' 64.39'	N. To Shiner in P.P. (D) S.E. To Shiner in ^{12" Ash} T.P. (D) S.W. To Shiner in T.P. (D)	
✓ 142+19.89 = P.T. Set PK Nail 16 To Surface		95.97' 91.60' 72.12'	N.E. To " " (D) S.E. T " " (D) S.W. T " " (D)	
✓ 147+23.15 = P.I. (Hartman Rd.) Ed. P.P. Spk. 17 To Surface		54.44 51.52 75.79' 72.09' 97.15'	N.E. T " " P.P. (D) N.W. To " " P.P. (D) S.W. To " " (D) S.E. " " " " (D)	
✓ 157+29.83 = P.C. Set PK Nail 18 To Surface		78.28 40.15 71.18	N.E. To Shiner in 20" Ash (D) N. To R/W Monument (D) S.W. To Shiner in P.P. (D)	
✓ 160+36.97 = P.I. Ed. P.P. Spk. 19 To Surface		75.92' 65.63 62.34' 38.54'	N.E. To Shiner in T.P. (D) N. To S.W. Cor. Res. (Blk) (D) N.W. To Shiner in 20" Ash (D) S.W. To Shiner in P.P. (D)	
✓ 180+64.40 = P.I. Ed. P.P. Spk. 20 To Surface		71.19' 42.55' 76.88'	N.E. To Shiner in 8" Apple (P) N.W. To Shiner in P.P. (P) S.E. To Shiner in T.P. (P)	

PERSONNEL	TITLE	PERSONNEL	TITLE
Silvester			
+			
crew			

COUNTY Lucas DATE 1958

S. R. #24 WEATHER

SEC He-Luc-Waterville TEMP (0.00)

DESCRIPTION LEFT CENTER LINE RIGHT JOB NO.

