

# O.D.O.T. DISTRICT 2 SURVEY OFFICE

PERSONNEL

REFERENCE NO. 21

SHEET 27 OF 68

NOTES S. HUSS

H.C. B. VANDUSEN

R.C. B. CORDES

C. COX

DATE 6-2-97

WEATHER CLOUDY / RAIN

TEMP. + 57°F

ROUTE US -24

COUNTY Lucas

TOWNSHIP Providence

SECTION 33

T 6 N R 9 E

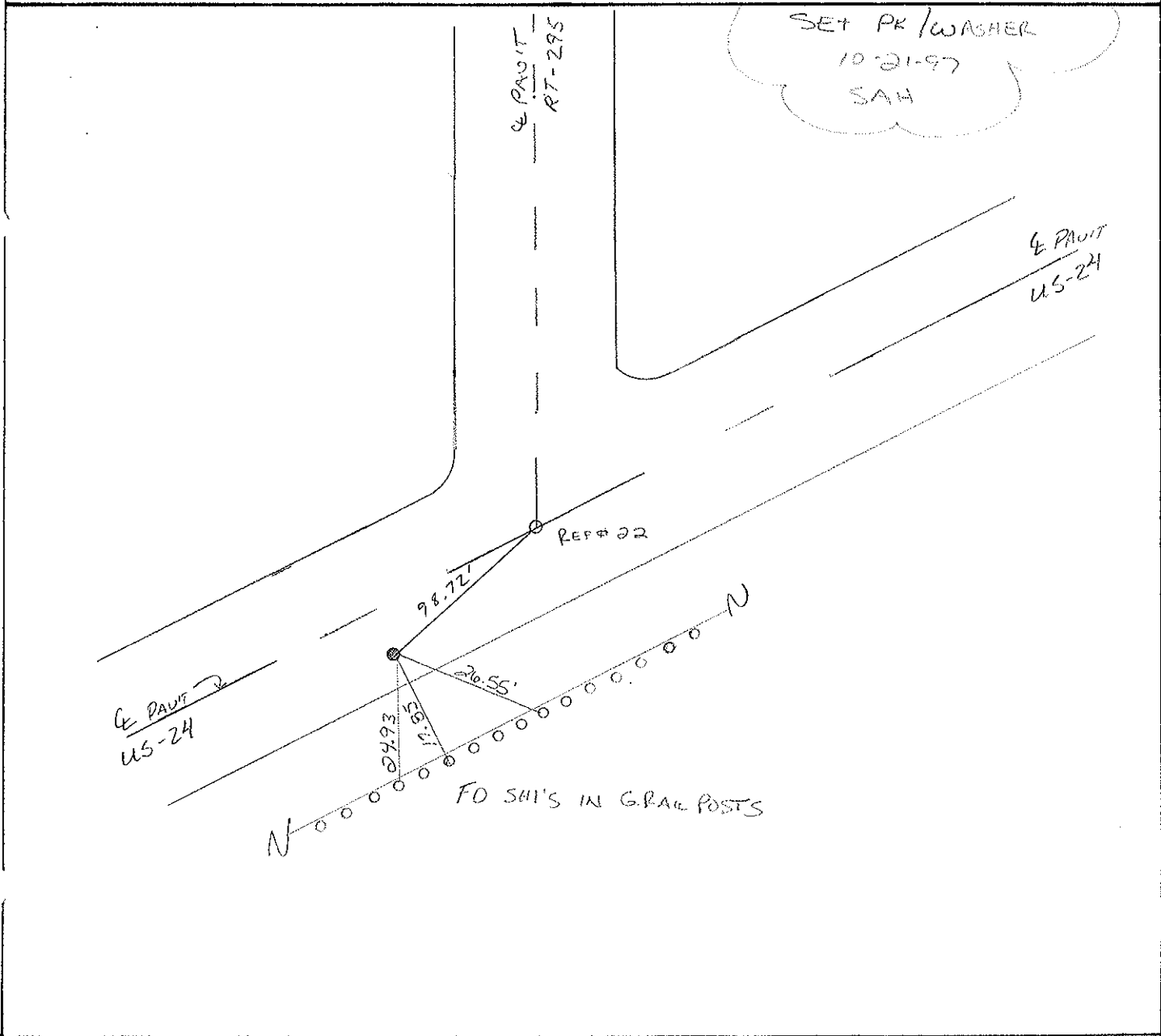
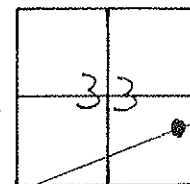
TYPE MONUMENT PK NAIL

ON SURFACE - ~~BELOW~~ ON SURFACE

~~LEFT - C PAV'T.~~ - RIGHT 5.6' RT

6.1 TO RT EDGE PAVEMENT

S.L.M. 109+17



# O.D.O.T. DISTRICT 2 SURVEY OFFICE

PERSONNEL \_\_\_\_\_

REFERENCE NO. 21

SHEET 20 OF \_\_\_\_\_

NOTES LOEHAKE

H.C. CANTERBURY

R.C. CORDES

DATE 10-11-94

WEATHER CLEAR

TEMP. +55

set P.K./WASHER  
5-15-95

ROUTE US #24

COUNTY LUCAS

TOWNSHIP Providence

SECTION 33

T. 6 N R. 9 E

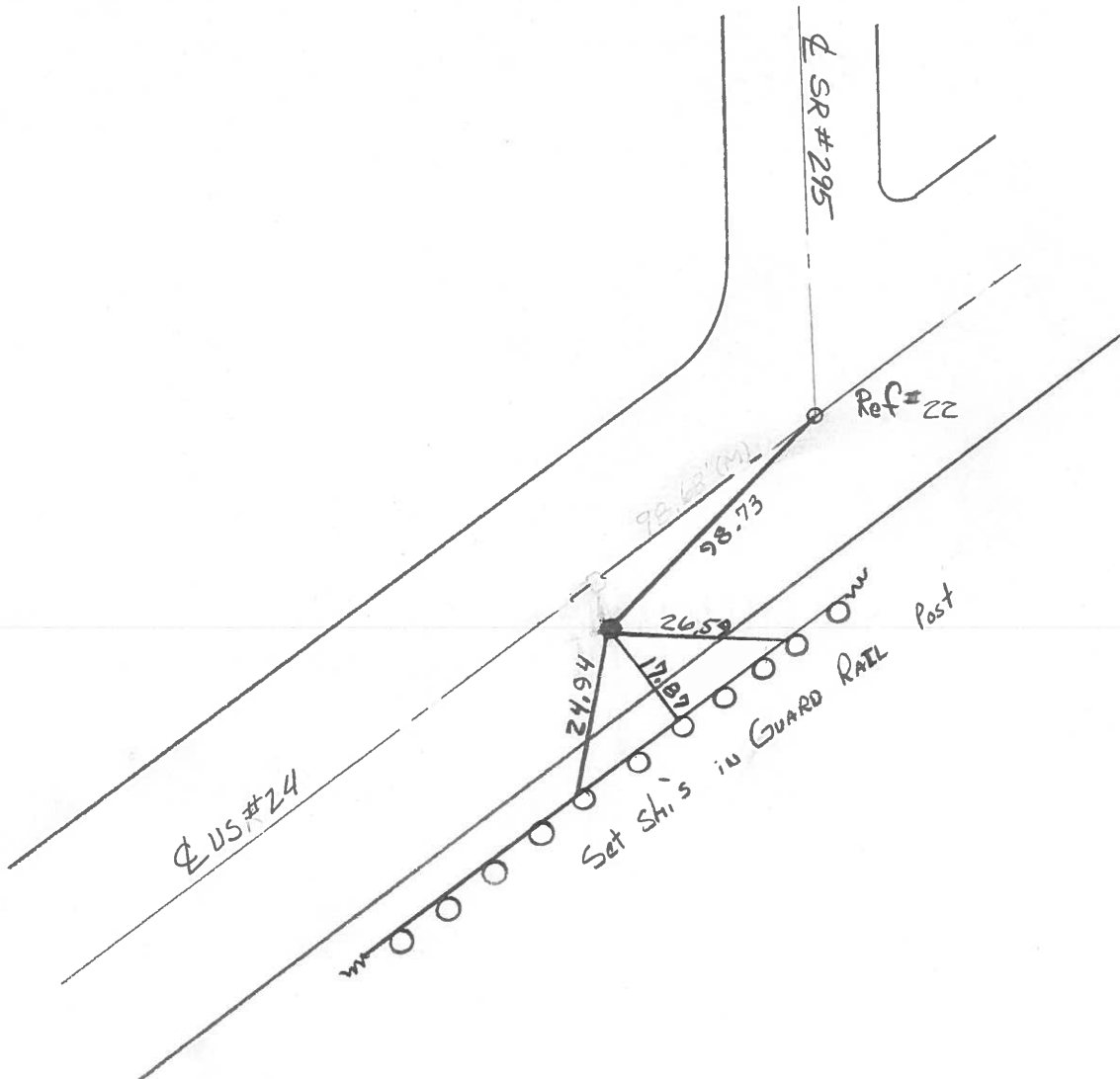
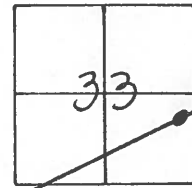
TYPE MONUMENT P.K. NAIL

ON SURFACE - ~~BELOW~~ Yes

~~LEFT~~ - CL PAV'T. - RIGHT 5.6 Rt

5.7 TO Rt EDGE PAVEMENT

S.L.M. 188+60



# O.D.O.T. DISTRICT 2 SURVEY OFFICE

PERSONNEL \_\_\_\_\_

REFERENCE NO. 21

SHEET 20 OF \_\_\_\_\_

NOTES 1. Stone

H.C. D. Curtis

R.C. J. Haushalter

DATE 29 Aug. 89

WEATHER Humid

TEMP. 84°

ROUTE US # 24

COUNTY Lucas

TOWNSHIP Providence

SECTION 33

T \_\_\_\_\_ R \_\_\_\_\_

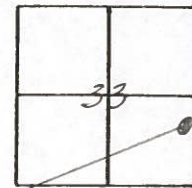
TYPE MONUMENT PK Nail

ON SURFACE - BELOW Surface

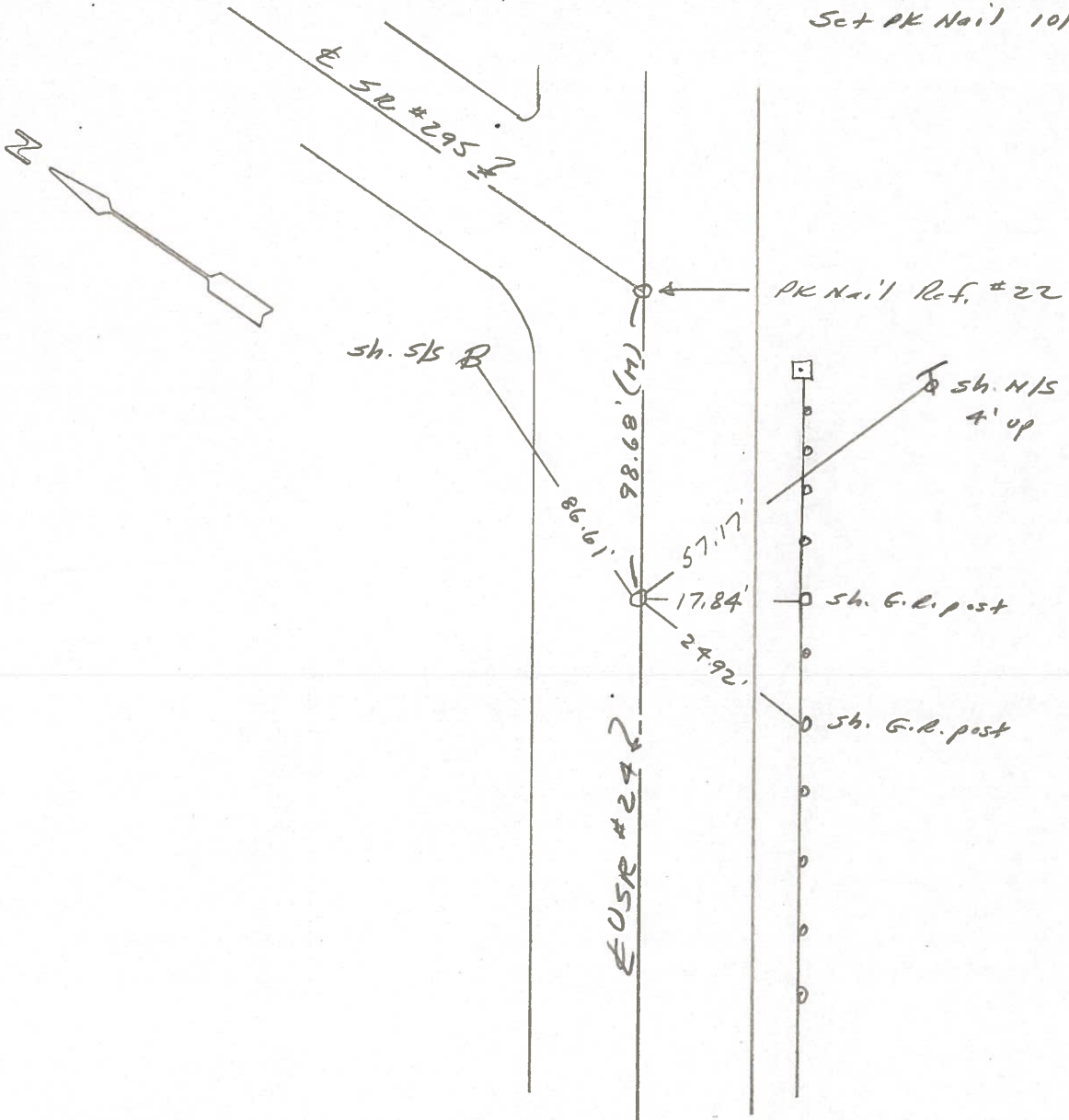
LEFT -  $\odot$  PAV'T. - RIGHT \_\_\_\_\_

\_\_\_\_\_ TO \_\_\_\_\_ EDGE PAVEMENT

S.L.M. 188+74



Set PK Nail 10/13/89 IRS



O.D.O.T. DISTRICT 2 SURVEY OFFICE

Sht. 26 of

County Lucas S.R. US #24

Date 9 July 1980

Township Providence

Weather Fair

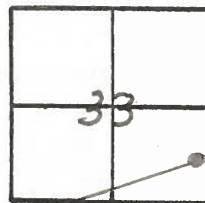
Section 33

Temp. 77°

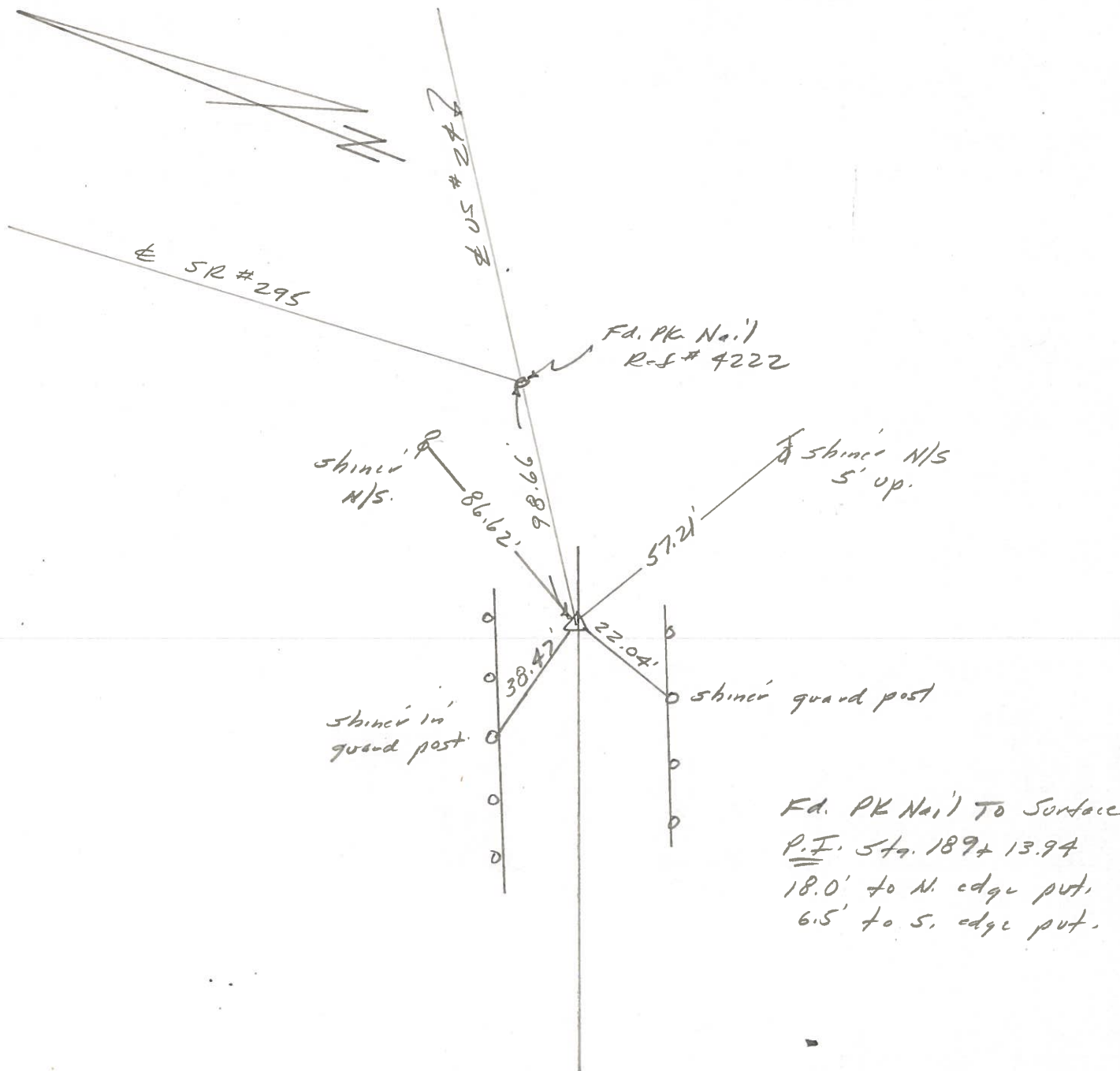
T\_N, R\_E

Personnel L. Stone  
R. Michalak  
P. Heuser  
D. Curtis  
~~D. Gramaty~~

21



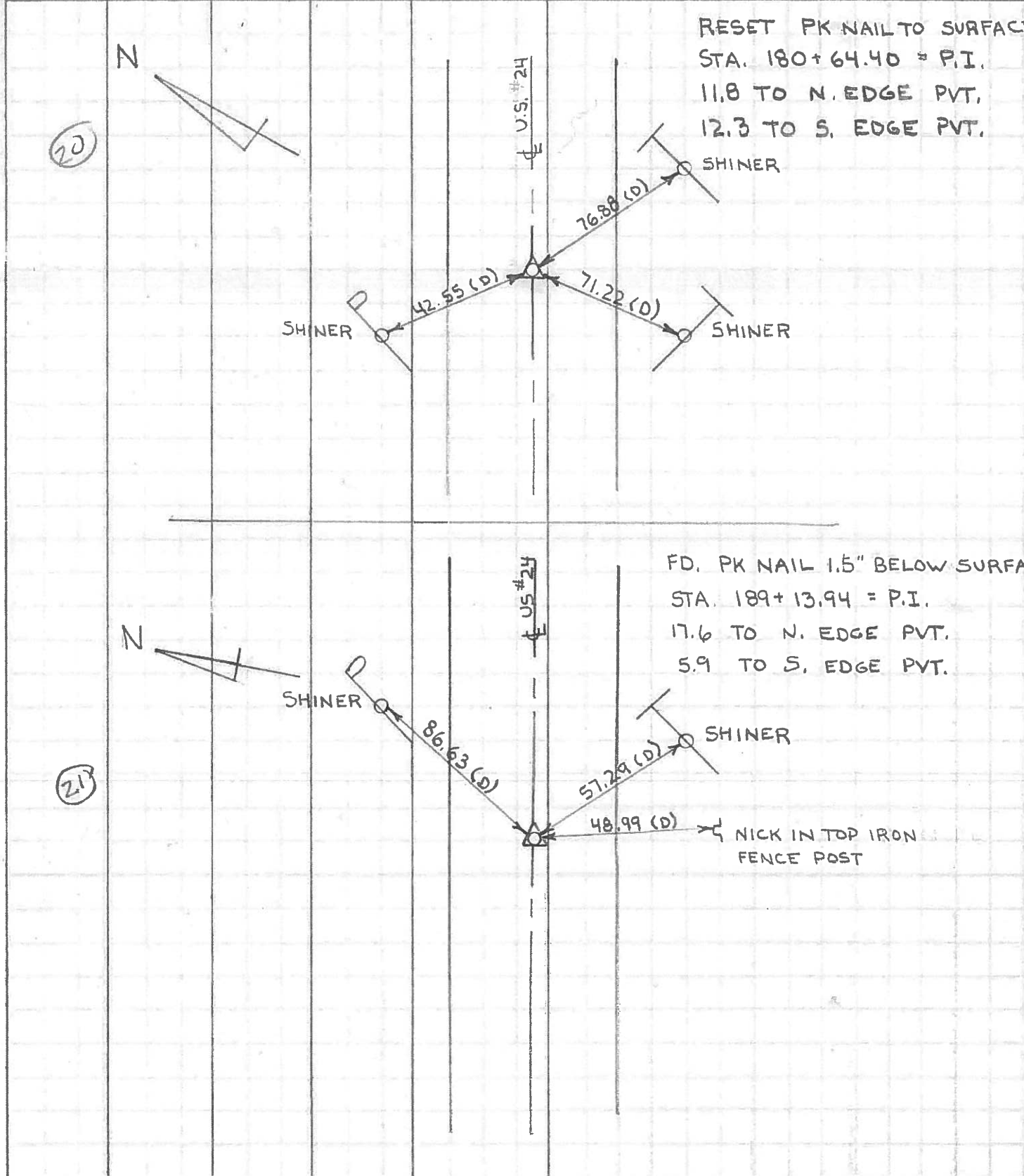
REF. NO. 4221



PERSONNEL	TITLE	PERSONNEL	TITLE
<u>W. DENNO</u>			
<u>D. CURTIS</u>			
<u>D. STEVENS</u>			
<u>R. BRANNAN</u>			

COUNTY LUCAS DATE JULY 5, 1971  
 S. R. U.S. # 24 WEATHER SUNNY - MIL  
 SEC. \_\_\_\_\_ TEMP. 75±

DESCRIPTION REFERENCES TO CONTROL POINTS JOB NO. \_\_\_\_\_  
LEFT CENTER LINE RIGHT

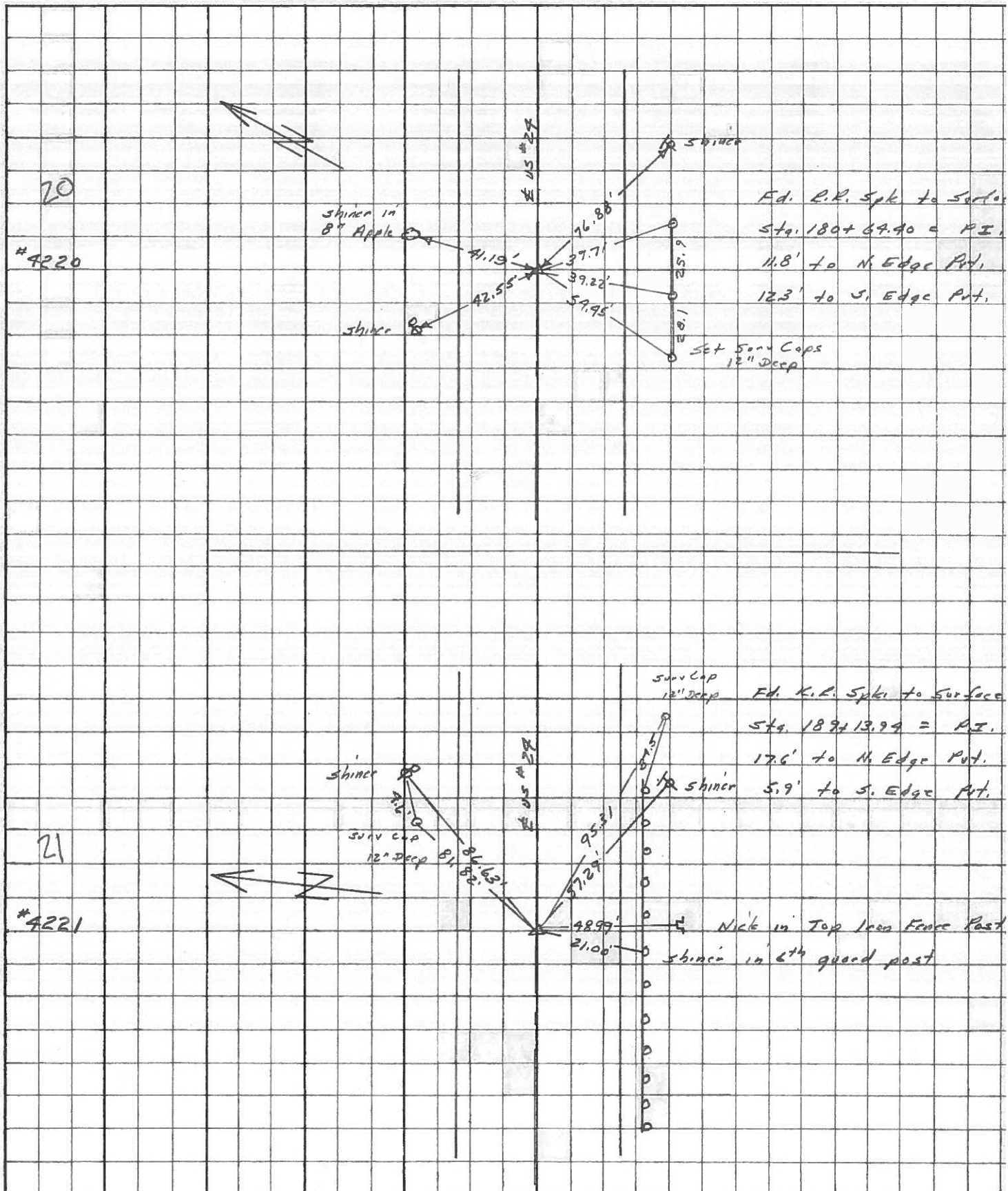


(20)

(21)

PERSONNEL	TITLE	PERSONNEL	TITLE	COUNTY	Lucas	DATE	May 68
Stone	Notes			S. R.	# 24	WEATHER	Fair
Beek	Flag			SEC.		TEMP.	
Michalak	Tape						
Schroder	Tape						

DESCRIPTION References to Control Points JOB NO.





PERSONNEL Slone TITLE \_\_\_\_\_ PERSONNEL Beck TITLE \_\_\_\_\_ COUNTY Lucas DATE 3 Feb. 66  
Bradley \_\_\_\_\_ \_\_\_\_\_ \_\_\_\_\_ \_\_\_\_\_ \_\_\_\_\_  
Schrofer \_\_\_\_\_ \_\_\_\_\_ \_\_\_\_\_ \_\_\_\_\_ \_\_\_\_\_  
 S. R. 24 WEATHER Co. 1  
 SEC. \_\_\_\_\_ TEMP. 31°

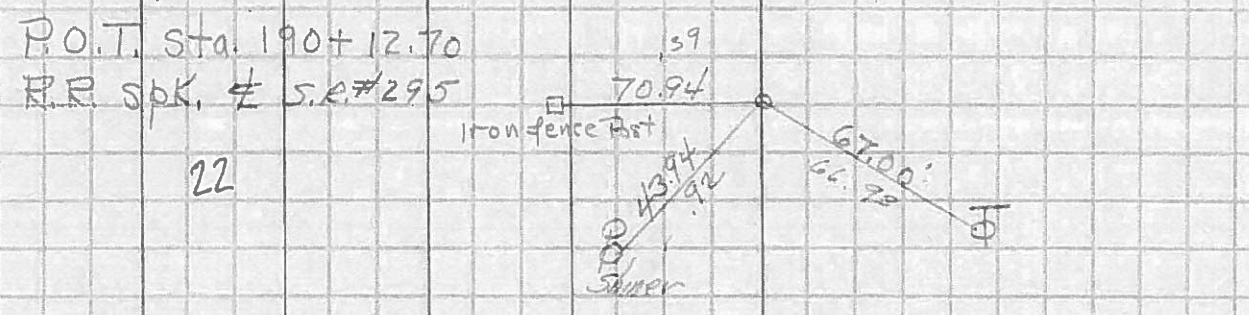
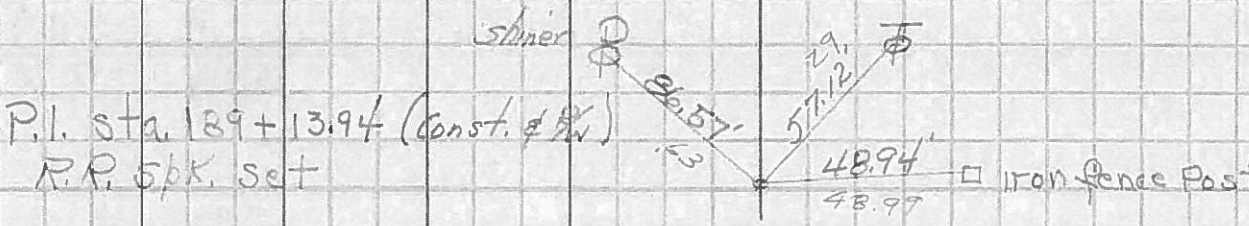
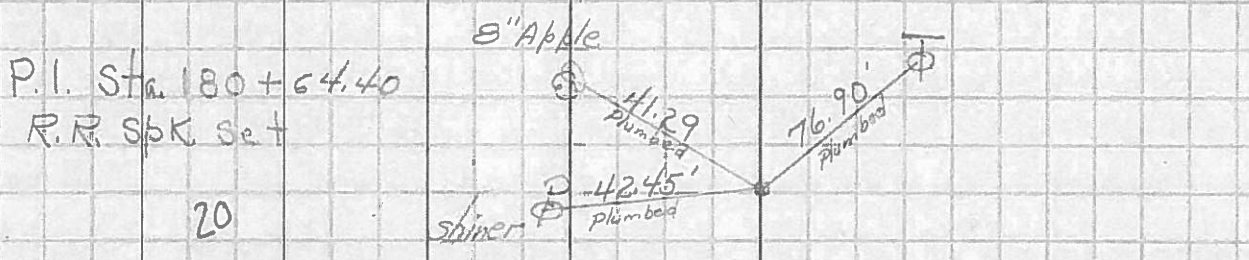
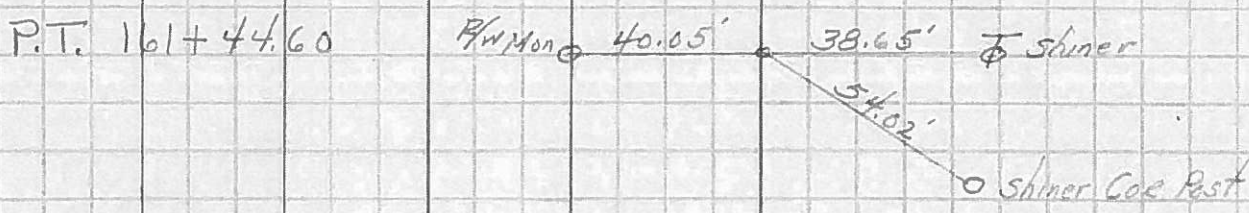
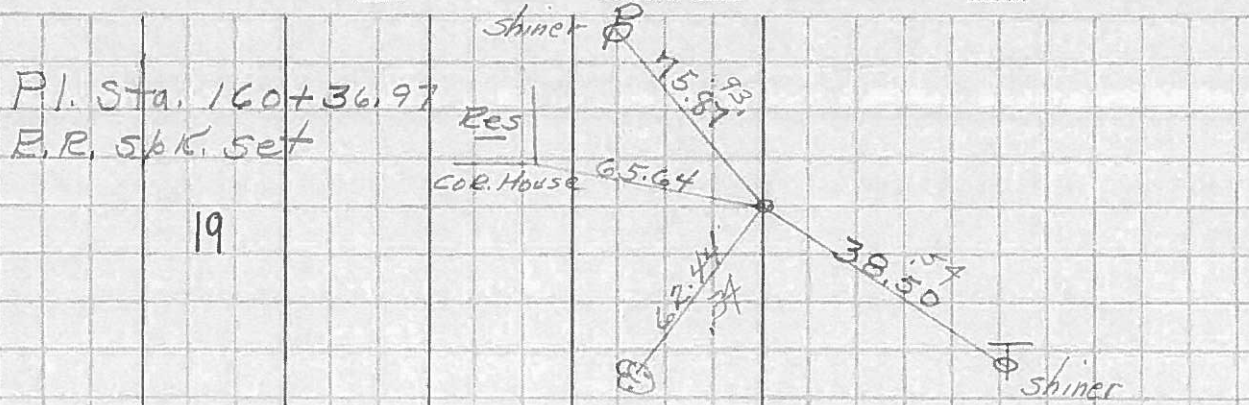
DESCRIPTION Pts to Central Points JOB NO. \_\_\_\_\_  
 LEFT CENTER LINE RIGHT

DESCRIPTION	LEFT	CENTER LINE	RIGHT
189+1374 = P.I. Fd. R.R. Spt. To Surface	21	86.63' 57.29' 48.99'	N.E. To Shiner in P.P. (D) S.E. To Shiner in T.P. (D) S. To Iron Fence Post (D)
190+1270 = P.O.T. (E S.R. #295) Fd. R.R. Spt. To Surface	22	70.39' 73.92' 66.93'	N. To Iron Fence Post (D) N.W. To Shiner in P.P. (D) S.W. To Shiner in T.P. (D)
207+9589 = P.I. Fd. R.R. Spt. To Surface	23	49.73' 71.39' 82.36'	N.E. To Shiner in P.P. (D) S.E. To Shiner in T.P. (D) S. To Shiner in 30" Tree (D)
216+0984 = P.I. Fd. R.R. Spt. To Surface	24	72.44' 90.07' 43.06' 89.84'	N.E. To Shiner in P.P. (D) N.W. To R/W Mon. (D) S.E. To Shiner in T.P. (D) S.W. To R/W Mon. (D)
237+3802 = P.I. Fd. R.R. Spt. To Surface	25	81.20' 44.51' 40.46' 63.60'	N.E. To Shiner in P.P. (D) S.E. To Shiner in 8" Tree (D) S.S.E. To 1" I.P. 6" Above Ground (D) S.W. To Shiner in T.P. (D)
258+8870 = P.I. Fd. R.R. Spt. To Surface	26	69.20' 44.18' 39.77'	N.E. To Shiner in P.P. (D) S.E. To Shiner in T.P. (D) S.W. To Shiner in 8" Maple (D)

PERSONNEL	TITLE	PERSONNEL	TITLE
Silvester			
#			
crew			

COUNTY LUCAS DATE 1958  
 S. R. #24 WEATHER \_\_\_\_\_  
 SEC. He-Luc-Waterville TEMP \_\_\_\_\_  
(0.00)

DESCRIPTION LEFT CENTER LINE RIGHT JOB NO.





PERSONNEL TITLE PERSONNEL TITLE

COUNTY LUCAS DATE \_\_\_\_\_

S. R. #24 WEATHER \_\_\_\_\_

SEC. \_\_\_\_\_ TEMP. \_\_\_\_\_

DESCRIPTION U.S.#24 Sec. H JOB NO. \_\_\_\_\_

LEFT

CENTER LINE

RIGHT

#251 Sta. 189+79.5 P.I.

#252 Sta. 204+25.70 (Stone)  
 $\Delta = 0^{\circ}00'$

#253 Sta. 207+95.8 (Stone)  
 $\Delta = 0^{\circ}00'$

#254 Sta. 208+52.13 P.I.

#255 Sta. 217+42.83 P.I.

#256 Sta. 227+66.58 P.I.