

O.D.O.T. DISTRICT 2 SURVEY OFFICE

PERSONNEL

REFERENCE NO. 22

SHEET 28 OF 68

NOTES S. AUSS

H.C. B. VAN DUSEN

DATE 6-2-97

ROUTE US-24

R.C. B. CORDES

WEATHER CLOUDY/RAIN

COUNTY Lucas

F C. COX

TEMP. +57°F

TOWNSHIP Providence

SECTION 33

T. 6 N R. 9 E

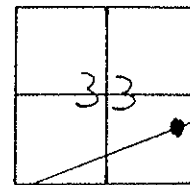
TYPE MONUMENT P.K. NAIL & WASHER

ON SURFACE - BELOW YES

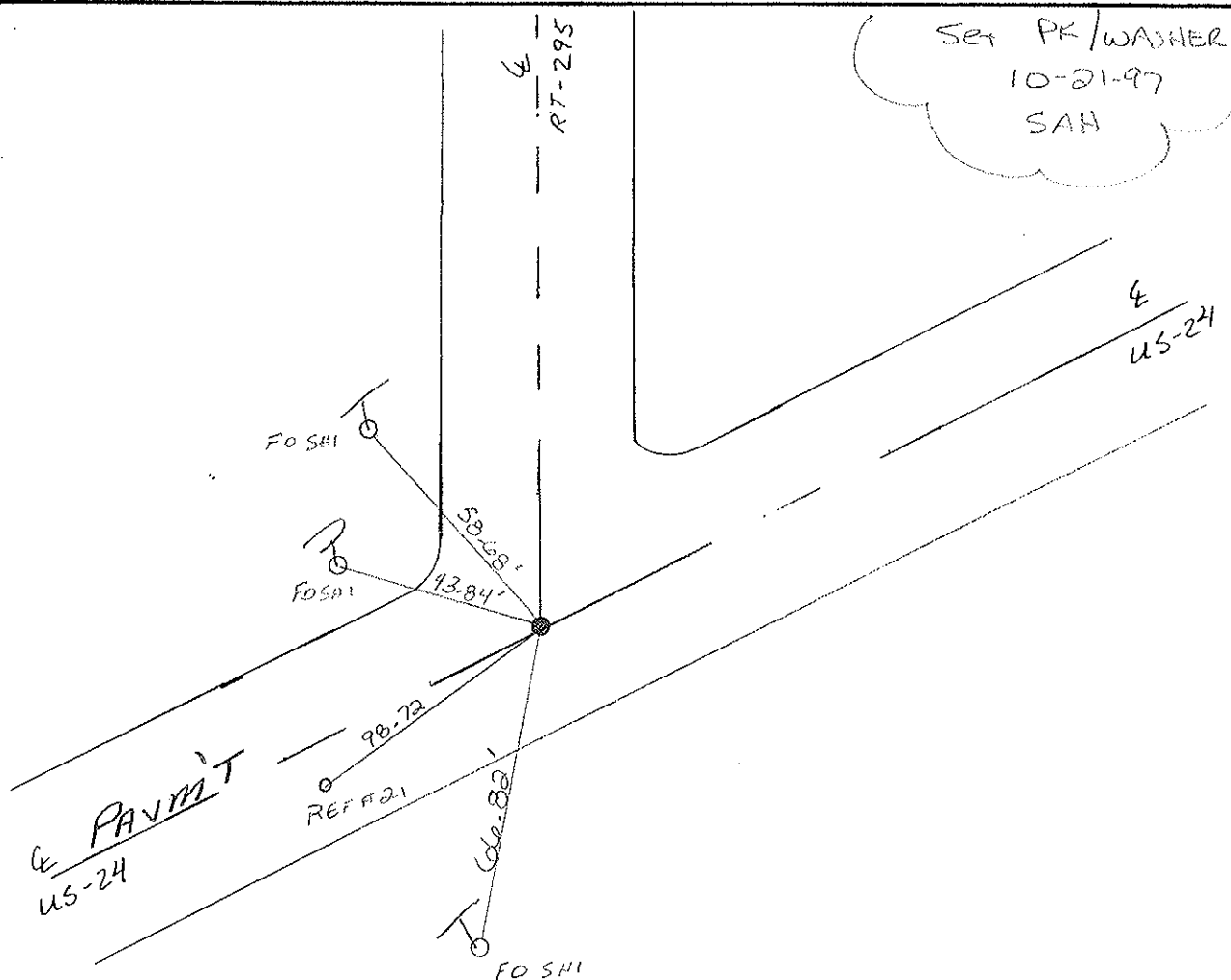
~~LEFT~~ - CL PAV'T. - RIGHT 2.1 RT

9.7 TO RT EDGE PAVEMENT

S.L.M. 190+14



SET PK/WASHER
 10-21-97
 SAH



O.D.O.T. DISTRICT 2 SURVEY OFFICE

PERSONNEL

REFERENCE NO. 22

SHEET 21 OF

NOTES VAN DUJEN

H.C. MOSEY

R.C. SLOVEY

HERMILLER

DATE 10-7-94

WEATHER CLEAR

TEMP. +60

^{set}
P.K/WASHER
5-15-95

ROUTE US #24

COUNTY LUCAS

TOWNSHIP Providence

SECTION 33

T. 6 N. R. 9 E.

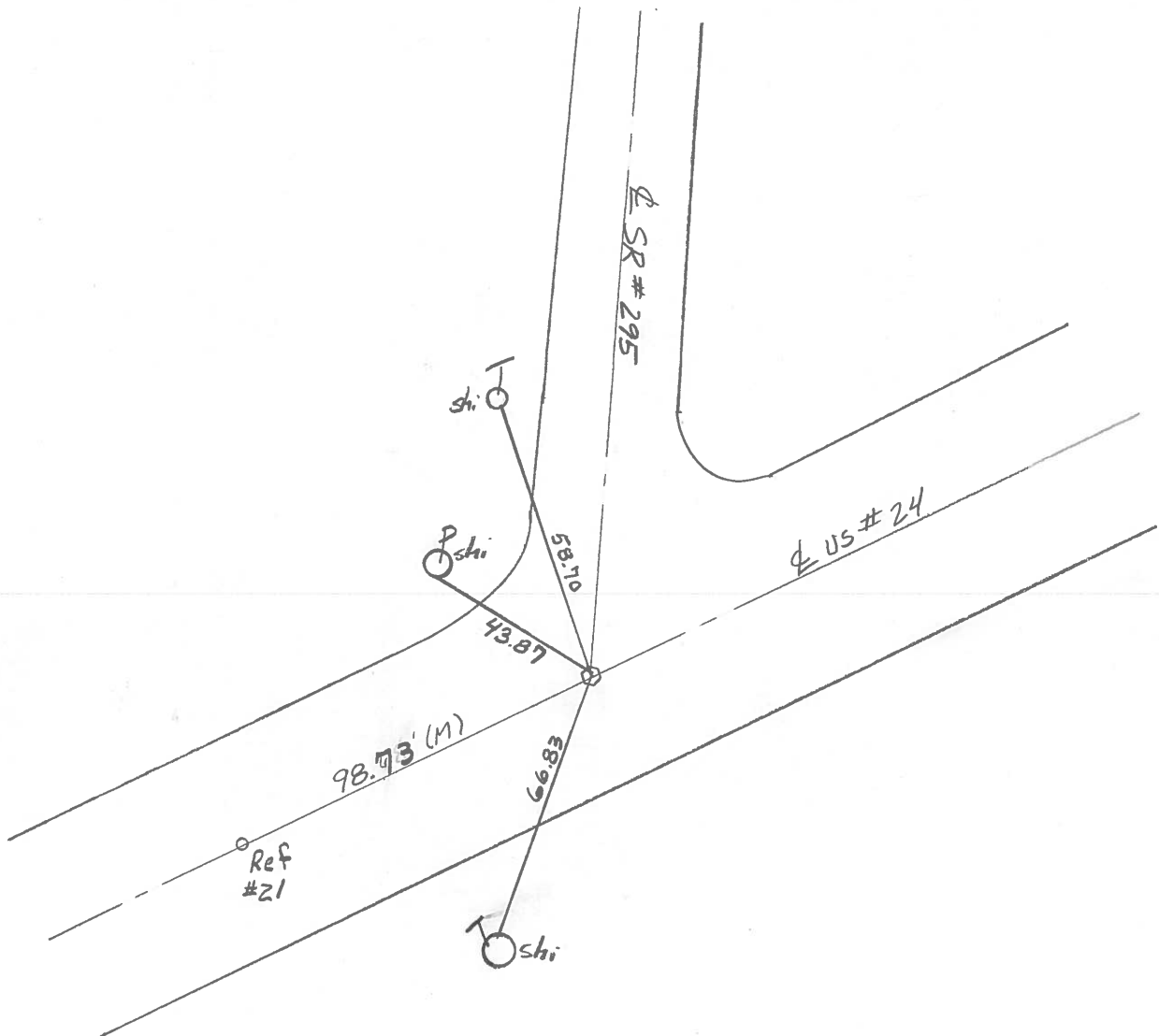
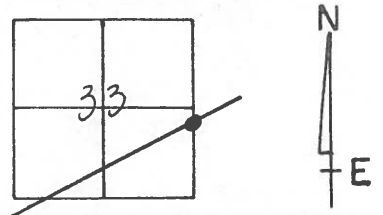
TYPE MONUMENT P.K

ON SURFACE - BELOW Yes

LEFT - ~~C~~ PAV'T. - RIGHT 2.0 Rt

9.3 TO Rt EDGE PAVEMENT

S.L.M. 189 + 59



O.D.O.T. DISTRICT 2 SURVEY OFFICE

1 of 40

PERSONNEL

REFERENCE NO. 22

SHEET 21 OF

#1 for SR295

NOTES L. Stone

H.C. D. Curtis

R.C. J. Householder

DATE 29 Aug. 89

WEATHER Humid

TEMP. 89°

ROUTE US#24

COUNTY Lucas

TOWNSHIP Providence

SECTION 33

T R

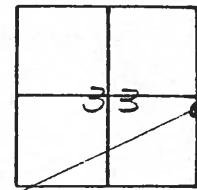
TYPE MONUMENT PK Nail

ON SURFACE - BELOW Surface

LEFT - ☉ PAV'T. - RIGHT

 TO EDGE PAVEMENT

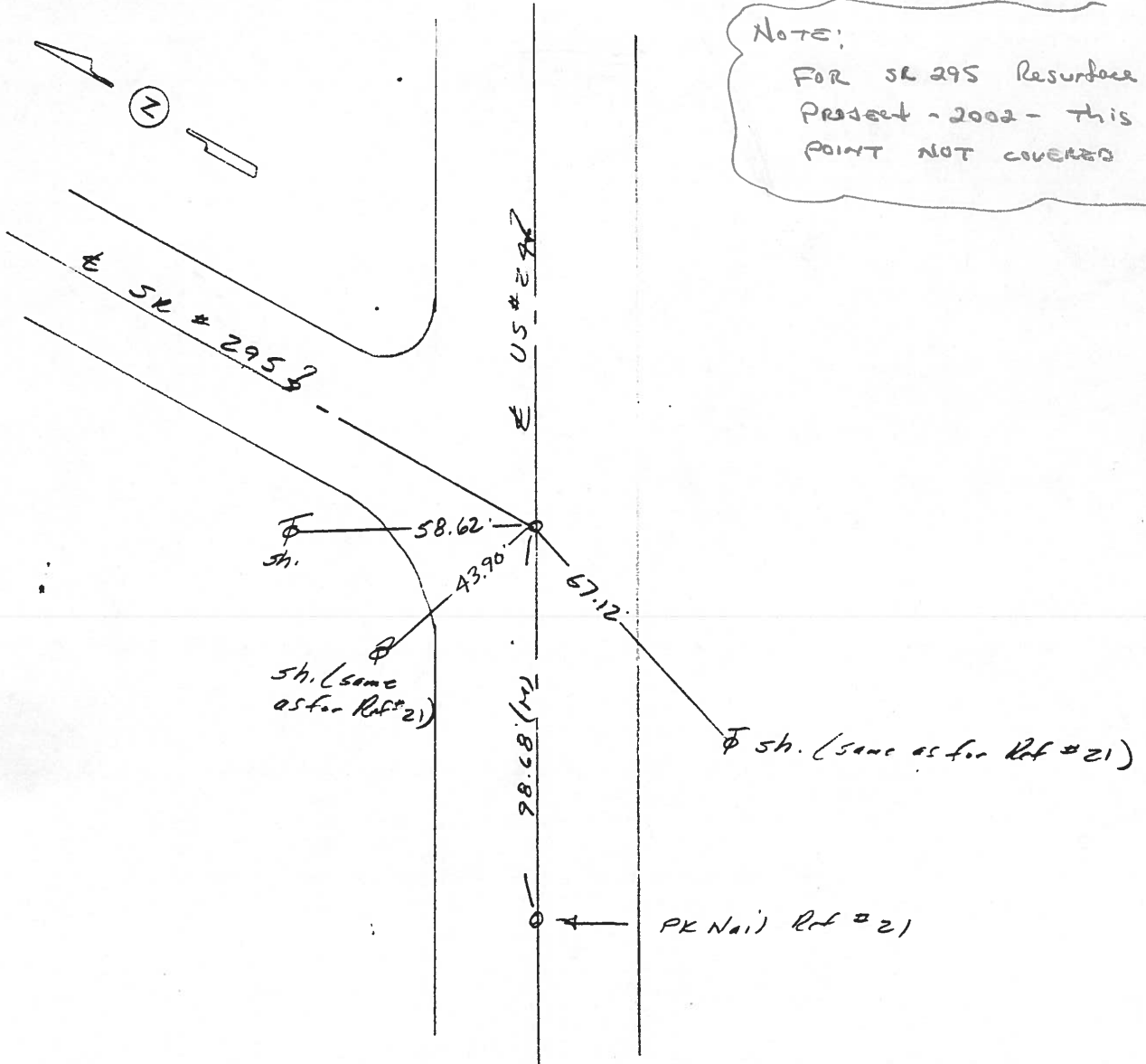
S.L.M. 189+73



Set PK Nail 10/13/89 IRS

NOTE:

FOR SR 295 Resurface Project - 2002 - This POINT NOT COVERED



OD.O.T. DISTRICT 2 SURVEY OFFICE

Sht. 27 of

County Lucas S.R. US #24

Date 9 July 1980

Township Providence

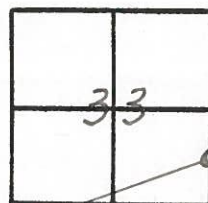
Weather Fair

Section 33

Temp. 77°

T N, R E

Personnel L. Stone



R. Michalak

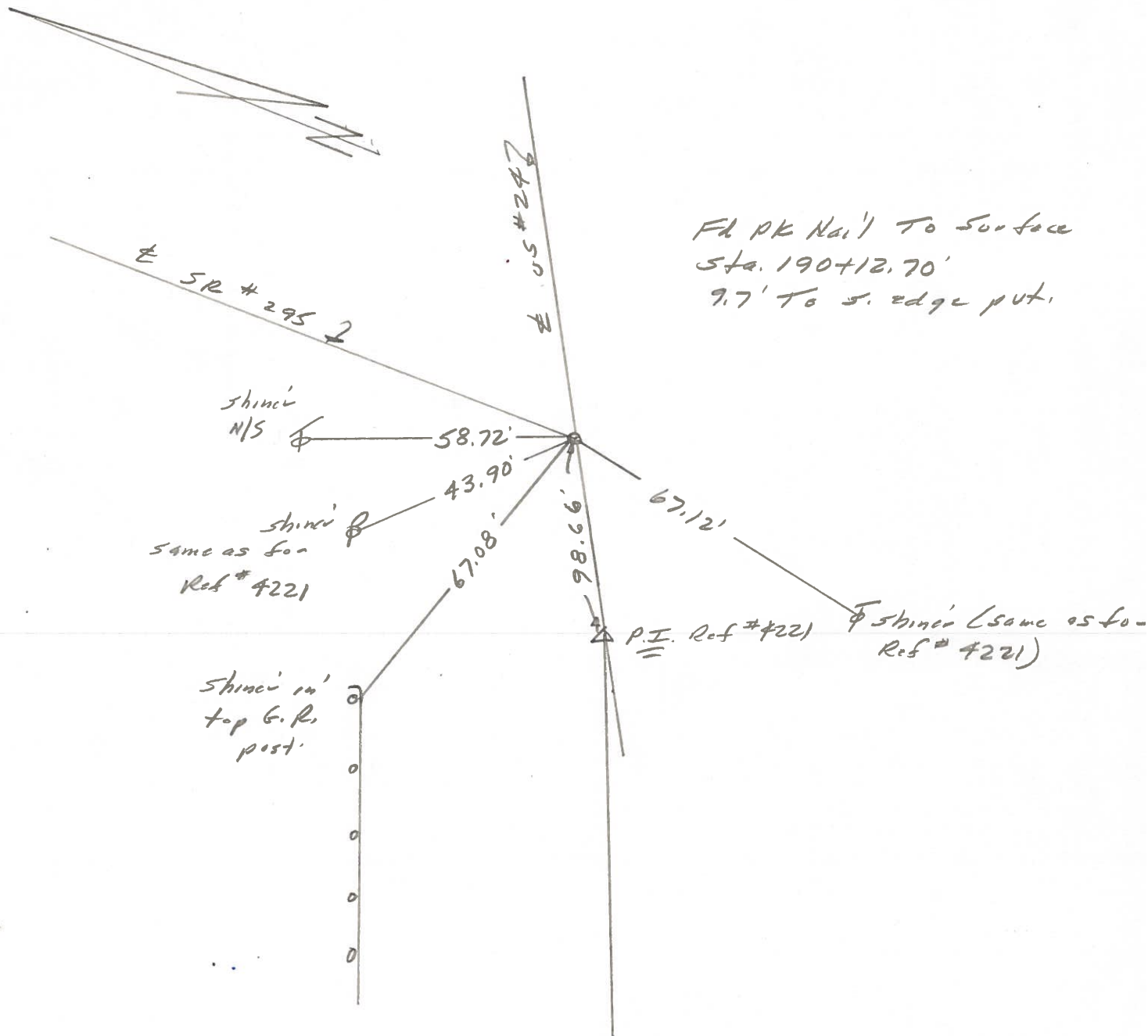
P. Neuser

D. Curtis

~~D. Granata~~

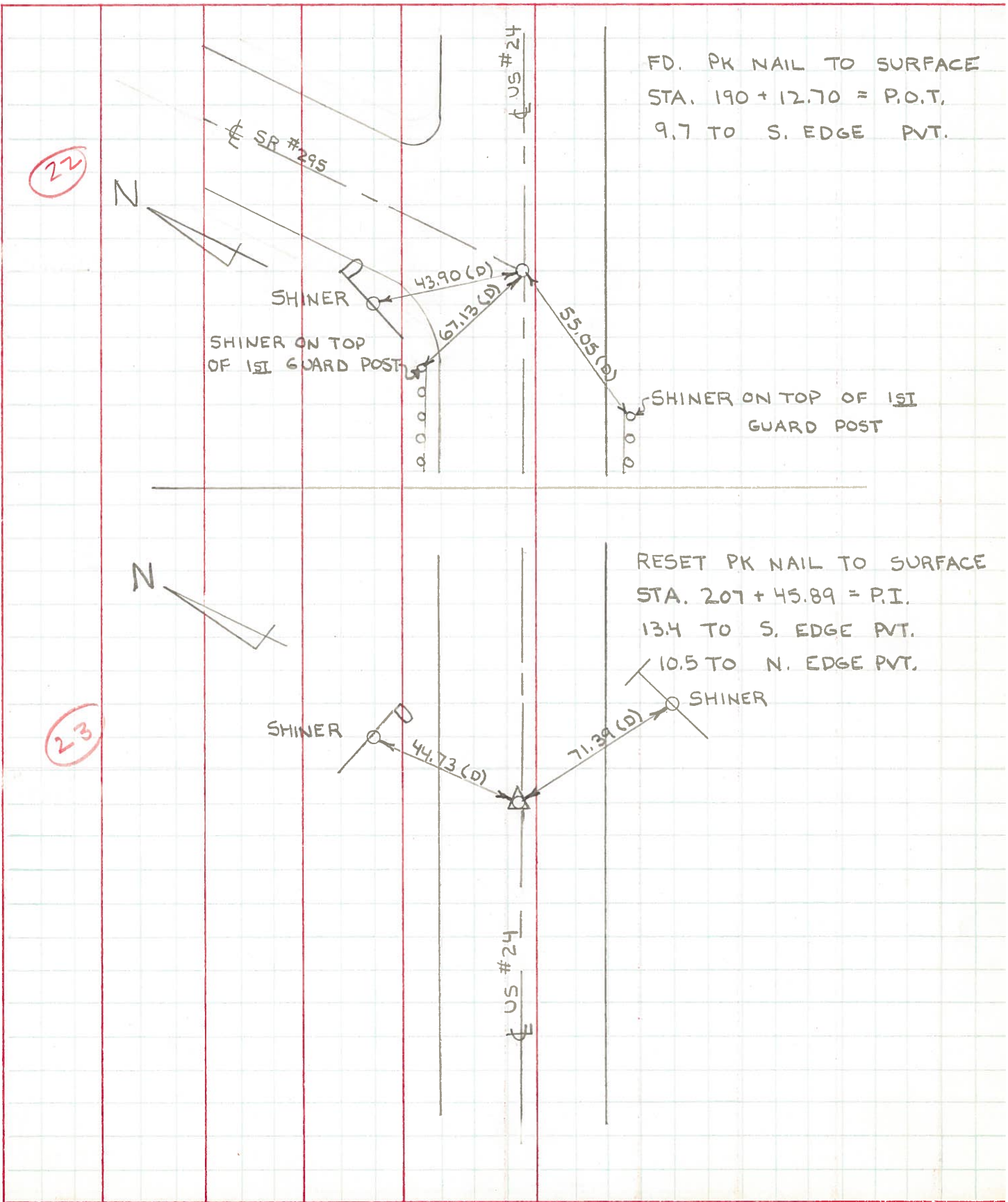
22

REF. NO. 4222



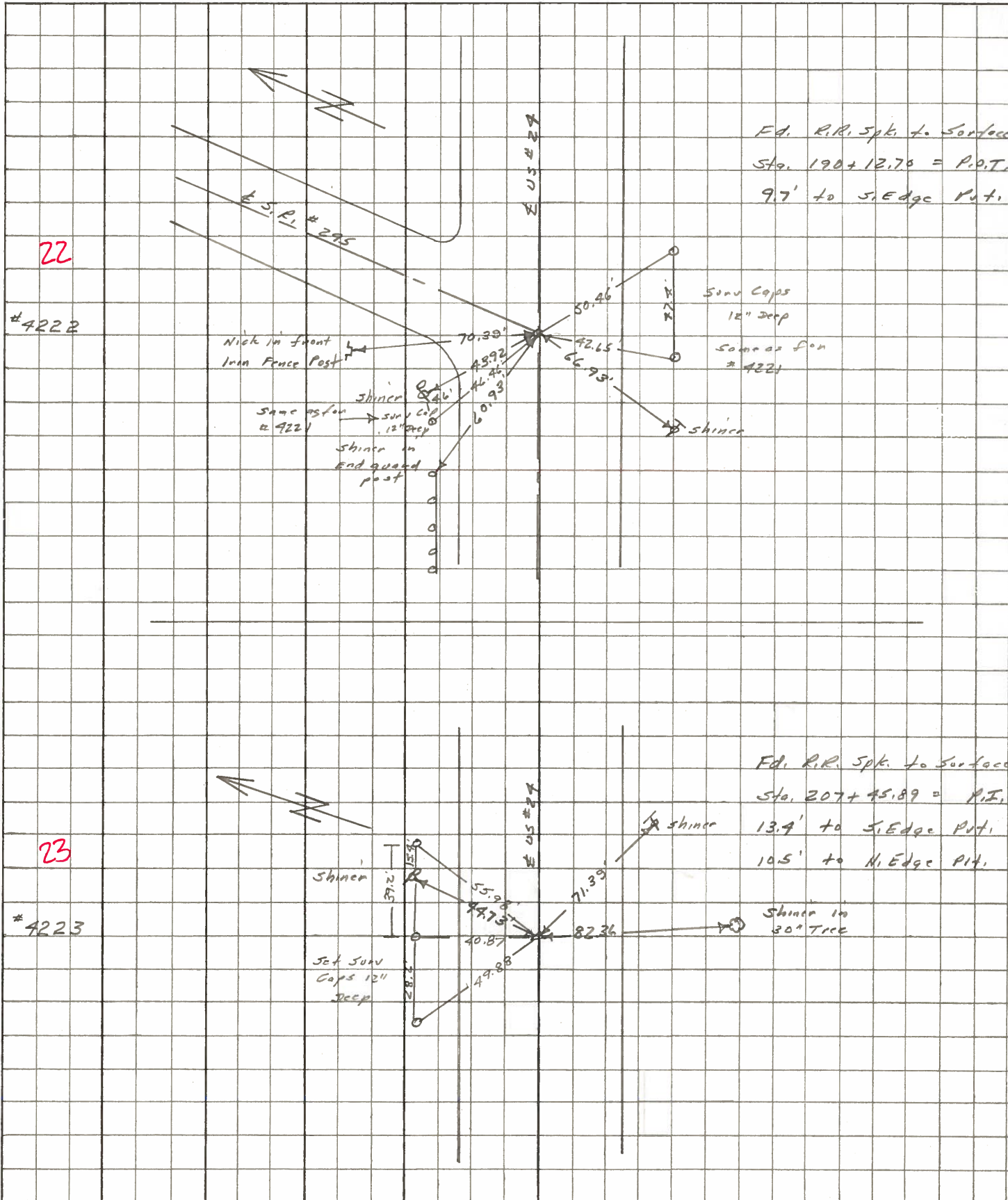
PERSONNEL	TITLE	PERSONNEL	TITLE	COUNTY	DATE
W. DENNO				LUCAS	JULY 6, 1971
D. CURTIS				S. R. U.S. # 24	WEATHER SUNNY - WAB
D. STEVENS					TEMP. 80±
R. BRANNAN				SEC.	

DESCRIPTION REFERENCES TO CONTROL POINTS LEFT CENTER LINE RIGHT JOB NO.



PERSONNEL	TITLE	PERSONNEL	TITLE	COUNTY	DATE	WEATHER	TEMP.
Stout	Notes			Lucas	May 68	Fair	
Beck	Flag			#24			
Michalak	Tape						
Schroder	Tape						

DESCRIPTION References to Control Points JOB NO. _____
 LEFT CENTER LINE RIGHT



PERSONNEL TITLE PERSONNEL TITLE

COUNTY Lucas DATE 13 Feb. 66

Slone
Beck
Grindley
Schrofer

S. R. 27 WEATHER Cloud

SEC. _____ TEMP. 51°

DESCRIPTION Poles to Control Points JOB NO. _____

	LEFT	CENTER LINE	RIGHT
189+1374 = P.I.		84.63'	N.E. To Shiner in P.P. (D)
21	Ed. R.R. Spt. To Surface	57.29' 98.99'	S.E. To Shiner in T.P. (D) S. To Iron Fence Post (D)
190+1220 = P.O.T. (E.S.R. #295)		70.39'	N. To Iron Fence Post (D)
22	Ed. R.R. Spt. To Surface	73.92' 66.93'	N.W. To Shiner in P.P. (D) S.W. To Shiner in T.P. (D)
207+9589 = P.I.		77.23'	N.E. To Shiner in P.P. (D)
23	Ed. R.R. Spt. To Surface	71.39' 82.36'	S.E. To Shiner in T.P. (D) S. To Shiner in 30" Tree (D)
216+0984 = P.I.		72.44'	N.E. To Shiner in P.P. (D)
24	Ed. R.R. Spt. To Surface	70.07' 43.06' 89.84'	N.W. To R/W Mon. (D) S.E. To Shiner in T.P. (D) S.W. To R/W Mon. (D)
237+3802 = P.I.		81.20'	N.E. To Shiner in P.P. (D)
25	Ed. R.R. Spt. To Surface	44.51' 70.46' 63.60'	S.E. To Shiner in 8" Tree (D) S.S.E. To 1" I.P. 6" Above Ground (D) S.W. To Shiner in T.P. (D)
258+8870 = P.I.		69.20'	N.E. To Shiner in P.P. (D)
26	Ed. R.R. Spt. To Surface	44.18' 39.77'	S.E. To Shiner in T.P. (D) S.W. To Shiner in 8" Maple (D)

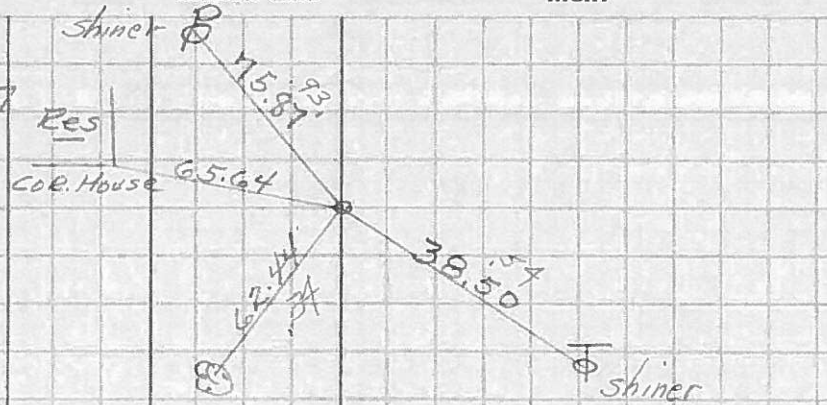
PERSONNEL	TITLE	PERSONNEL	TITLE
Silvester			
#			
CREW			

COUNTY LUCAS DATE 1958
 S. R. #24 WEATHER _____
 SEC. He-Luc-Waterville TEMP _____
(0.00)

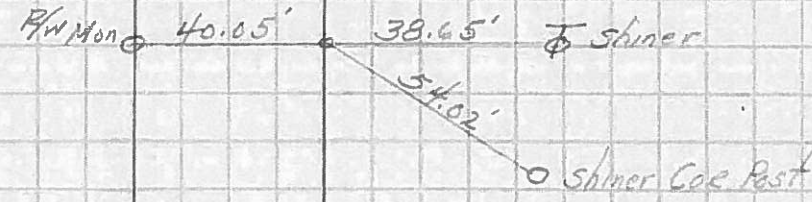
DESCRIPTION LEFT CENTER LINE RIGHT JOB NO.

✓ P.I. Sta. 160+36.97
 R.R. Spk. Set

19

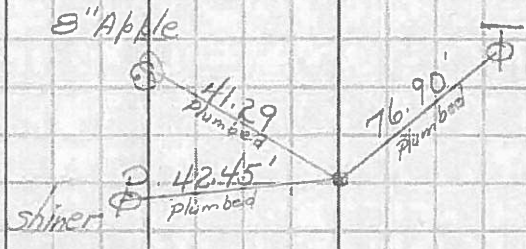


✓ P.T. 161+44.60



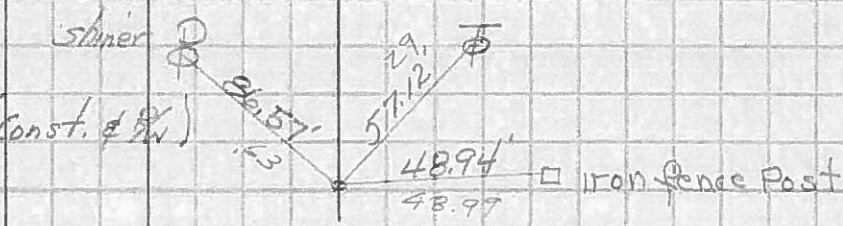
✓ P.I. Sta. 180+64.40
 R.R. Spk. Set

20



✓ P.I. Sta. 189+13.94 (Const. # 19)
 R.R. Spk. Set

21



✓ P.O.T. Sta. 190+12.70
 R.R. Spk. & S.R. #295

22

