

O.D.O.T. DISTRICT 2 SURVEY OFFICE

PERSONNEL

REFERENCE NO. 23

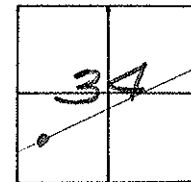
SHEET 29 OF 68

NOTES S. HOSS
 H.C. B. VANDUSEN
 R.C. B. CORDES
 FI C. COX

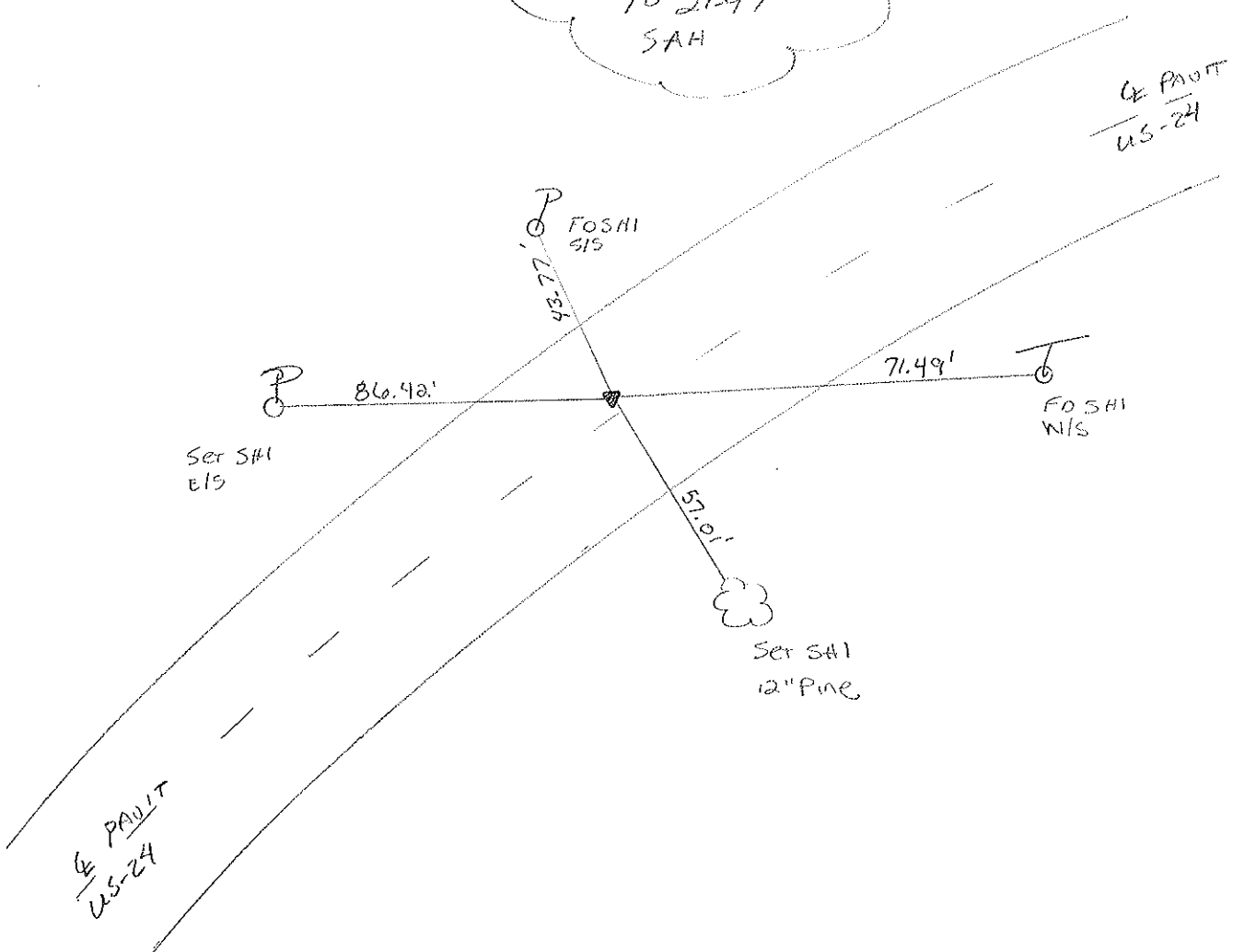
DATE 6-2-97
 WEATHER CLOUDY/RAIN
 TEMP. +57°F

ROUTE US-24
 COUNTY Lucas
 TOWNSHIP Providence
 SECTION 34
T 6 N R 9 E

TYPE MONUMENT P.K. & WASHER
 ON SURFACE - ~~BELOW~~ ON SURFACE
 LEFT - ~~C PAV'T.~~ RIGHT 2.3' LT
9.7' TO LT EDGE PAVEMENT
 S.L.M. 207 + 50



Set PK/WASHER
10-21-97
SAH



O.D.O.T. DISTRICT 2 SURVEY OFFICE

PERSONNEL

REFERENCE NO. 23

SHEET 22 OF

NOTES LOEHRKE

H.C. CANTERBURY

R.C. CORDS

DATE 10-11-94

WEATHER CLEAR

TEMP. +55

Set P.K. /w ASHER
5-15-95
C.L.

ROUTE US # 24

COUNTY LUCAS

TOWNSHIP PROVIDENCE

SECTION 34

T 6 N R 9 E

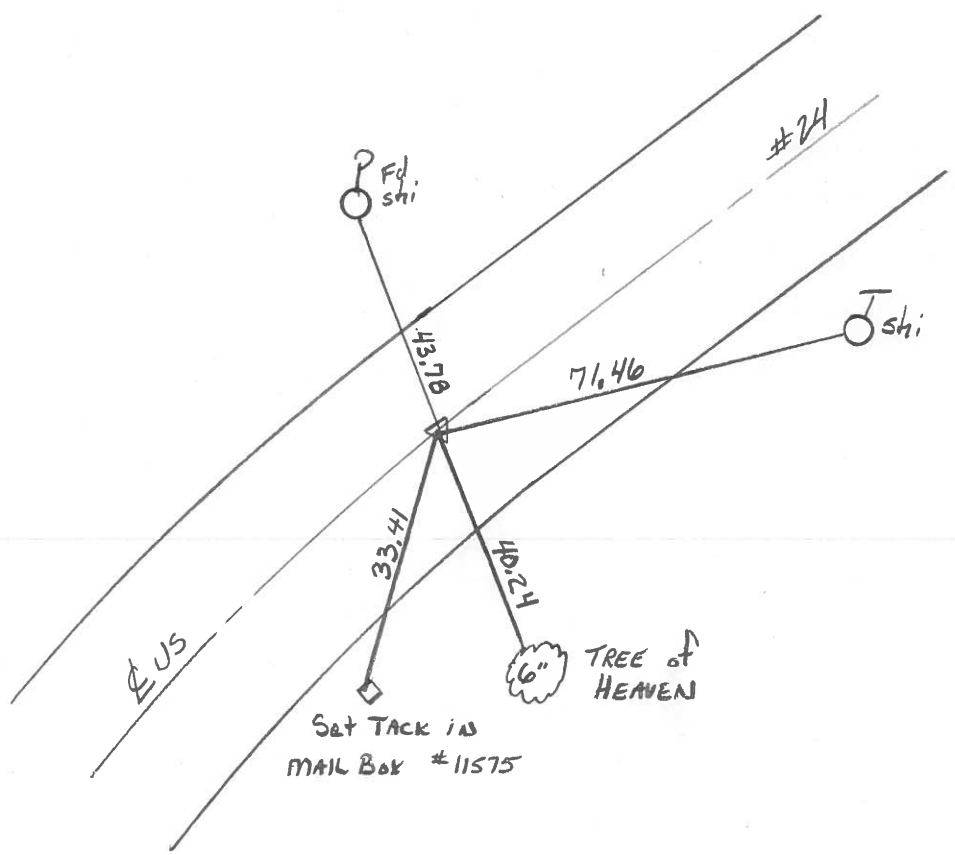
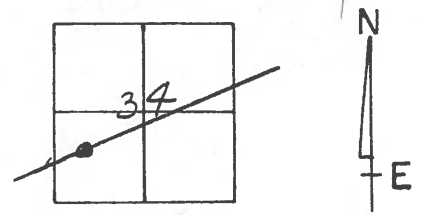
TYPE MONUMENT P.K. NAIL

ON SURFACE - ~~BELOW~~ Yes

LEFT - ~~C~~ PAV'T. - ~~RIGHT~~ 2.2 Lt

8.6 TO Lt EDGE PAVEMENT

S.L.M. 206+87



O.D.O.T. DISTRICT 2 SURVEY OFFICE

PERSONNEL _____

REFERENCE NO. 23

SHEET 22 OF _____

NOTES 1. Stone

H.C. D. Curtis

R.C. J. Householder

DATE 29 Aug. '89

WEATHER Humid

TEMP. 84°

ROUTE US #24

COUNTY Lucas

TOWNSHIP Providence

SECTION 34

T _____ R _____

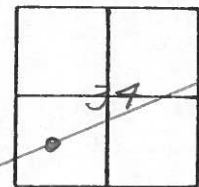
TYPE MONUMENT PK Nail

ON SURFACE - BELOW Surface

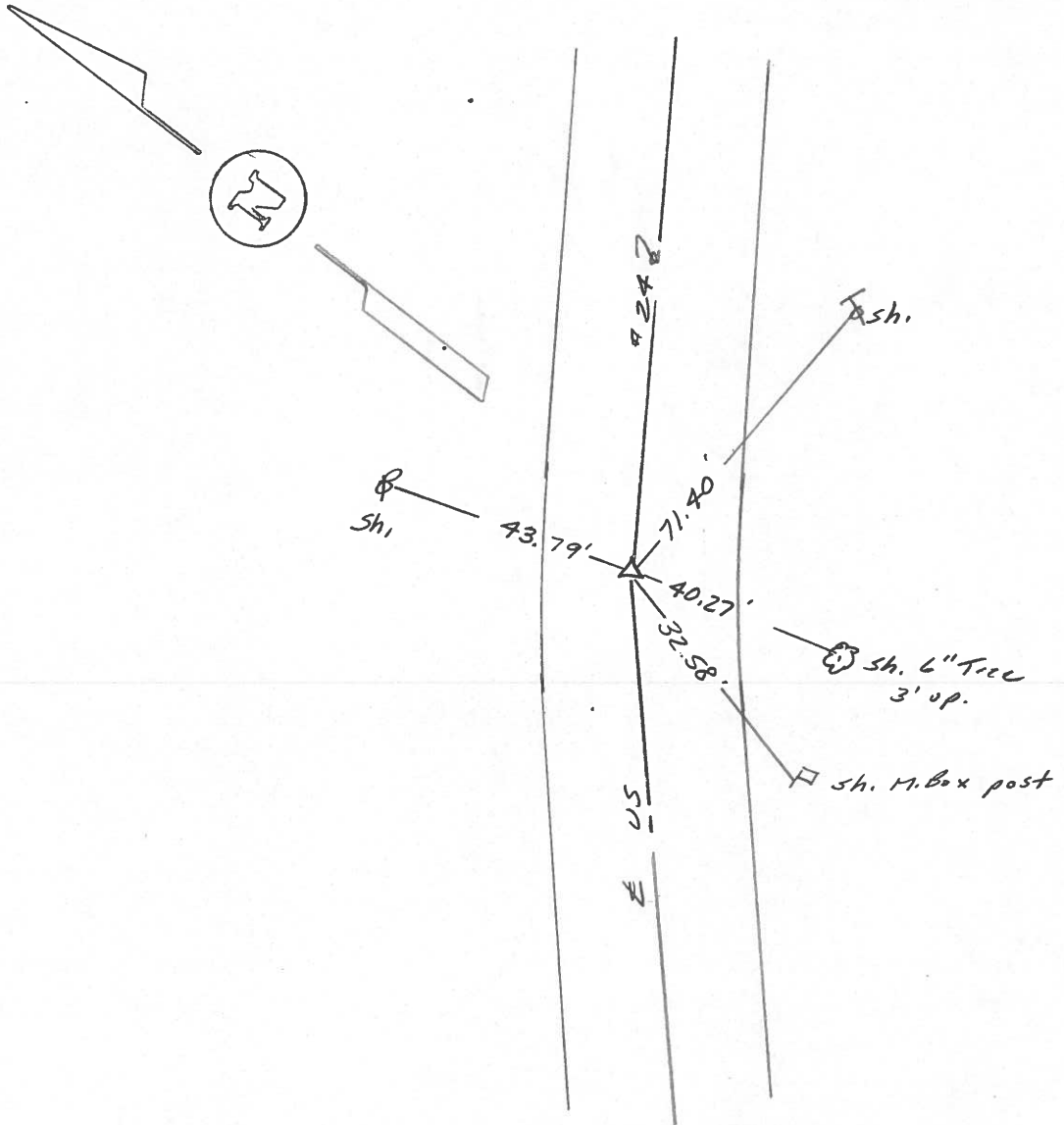
LEFT - \odot PAV'T. - RIGHT _____

_____ TO _____ EDGE PAVEMENT

S.L.M. 207+05



Set PK Nail 10/13/89 1RS



O.D.O.T. DISTRICT 2 SURVEY OFFICE

Sht. 28 of

County Lucas S.R. US#24

Date 9 July 1980

Township Providence

Weather Fair

Section 34

Temp. 78°

T N, R E

Personnel L. Stone

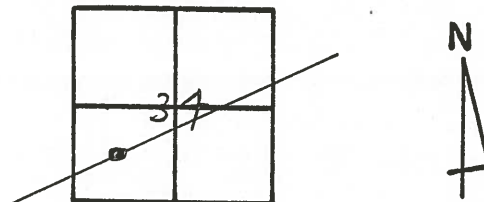
R. Michalak

P. Neuser

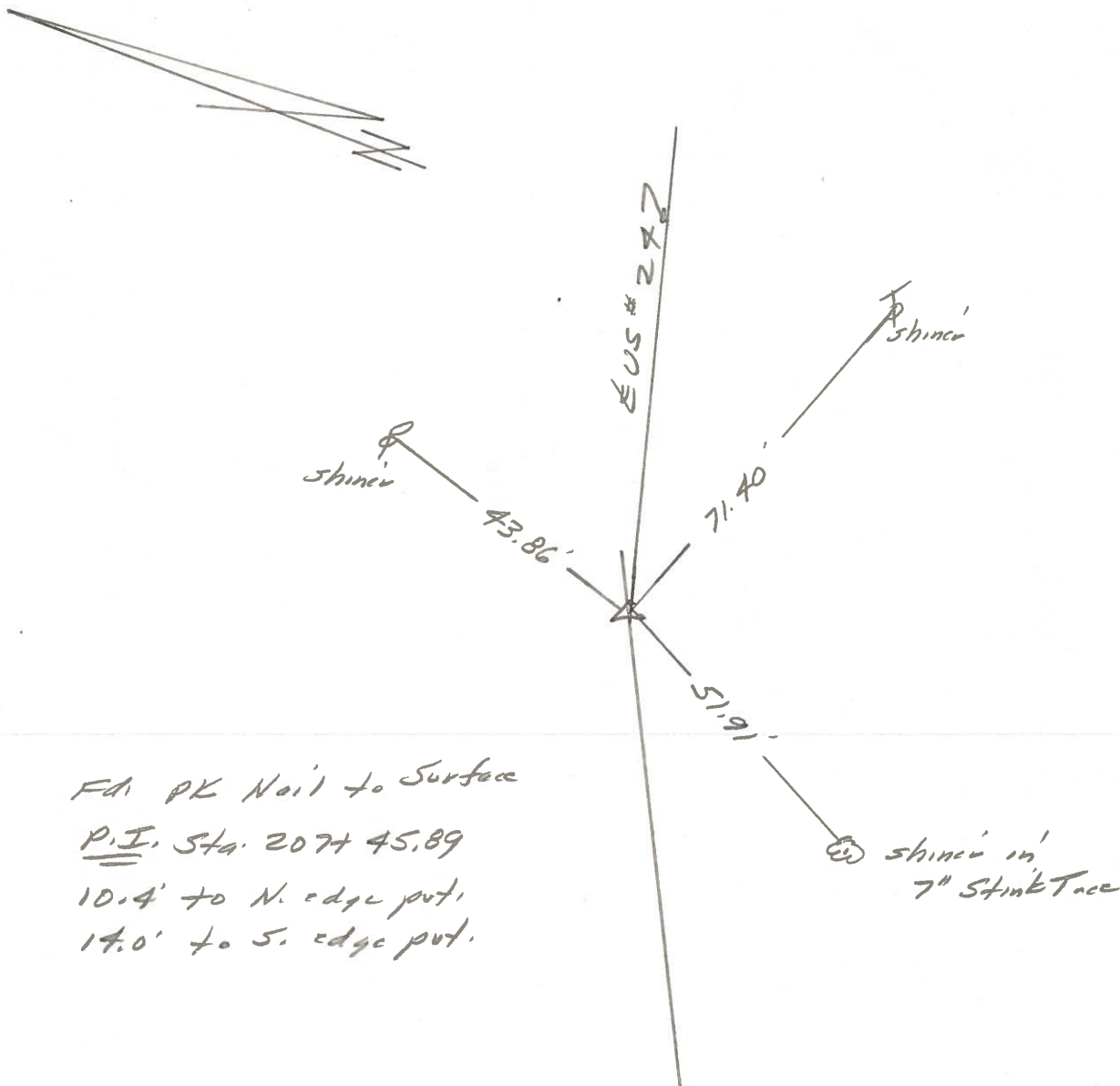
D. Curtis

D. Cravens

23



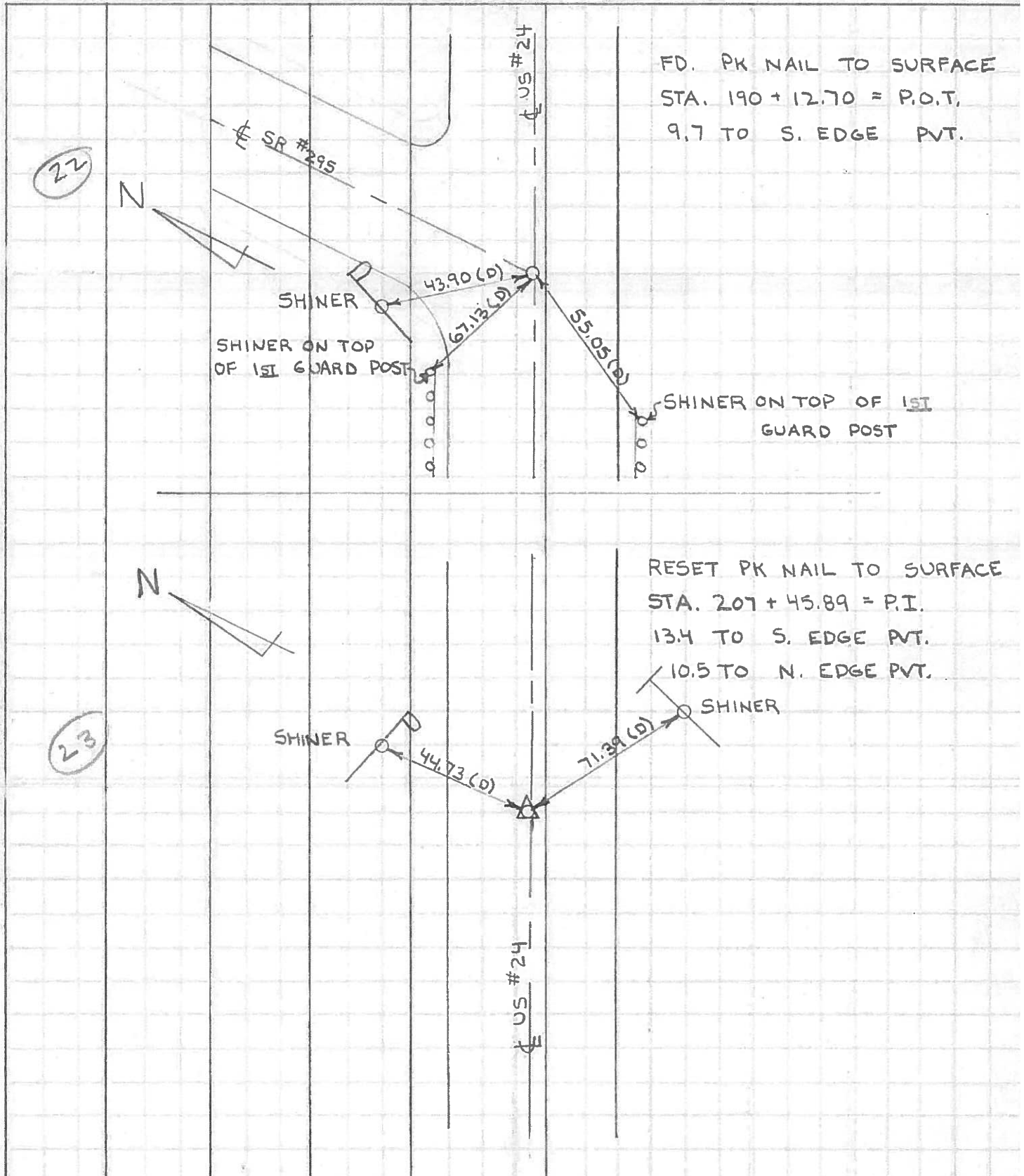
REF. NO. 4223



FAI PK Nail to Surface
P.I. Sta. 207+45.89
10.4' to N. edge put,
14.0' to S. edge put.

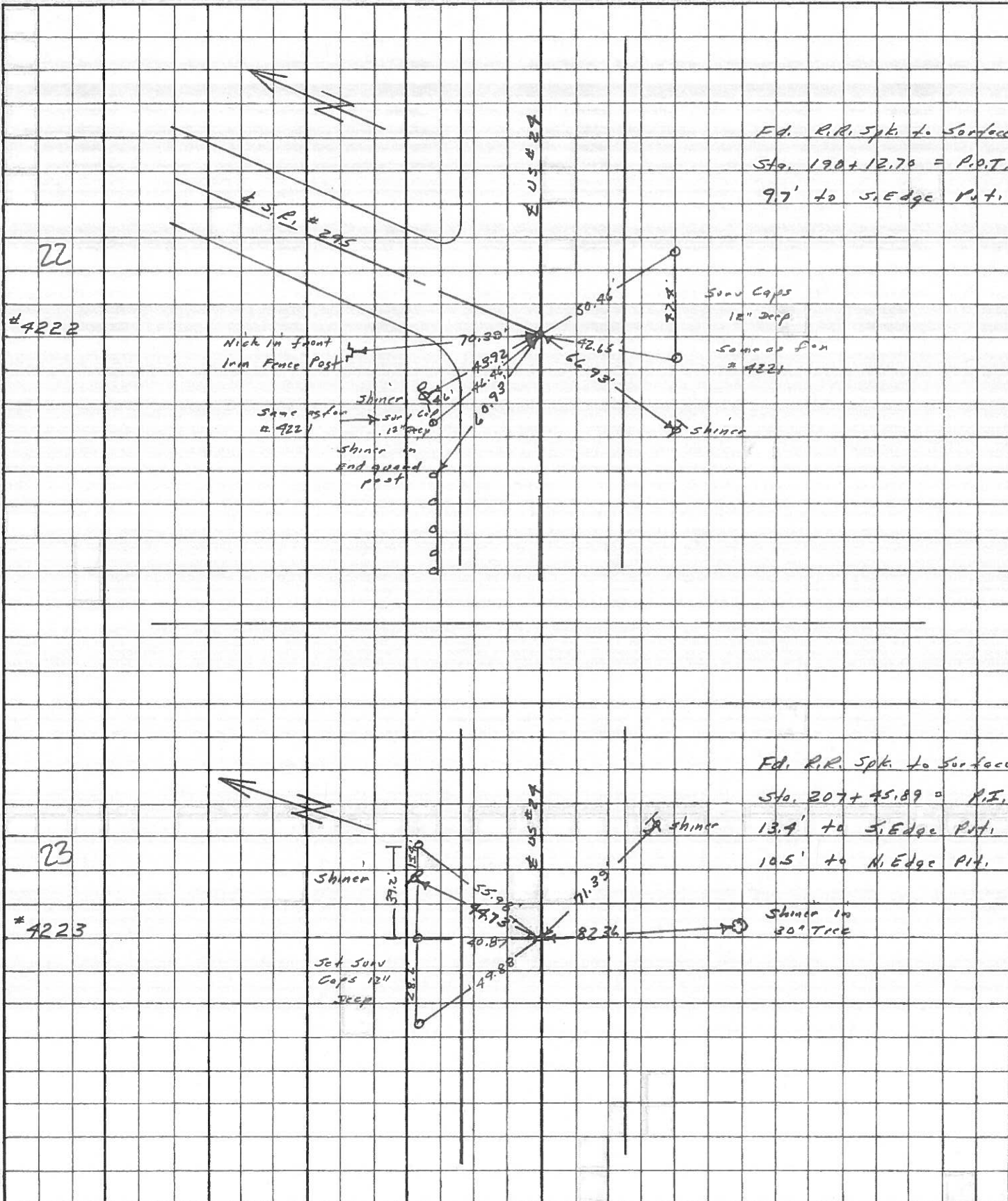
PERSONNEL	TITLE	PERSONNEL	TITLE	COUNTY	LUCAS	DATE	JULY 6, 1971
W. DENNO				S. R.	U.S. # 24	WEATHER	SUNNY - WAF
D. CURTIS				SEC.		TEMP.	80°
D. STEVENS							
R. BRANNAN							

DESCRIPTION REFERENCES TO CONTROL POINTS LEFT CENTER LINE RIGHT JOB NO.



PERSONNEL	TITLE	PERSONNEL	TITLE	COUNTY	DATE	WEATHER	TEMP.
Stout	Notes			Lucas	May 68	Fair	
Beck	Flag			S. R. # 27			
Micholak	Tape						
Schredler	Tape						

DESCRIPTION References to Control Points JOB NO.



PERSONNEL TITLE PERSONNEL TITLE

COUNTY Lucas DATE 13 Feb. 66

Shane _____

S. R. 27 WEATHER Cloud

Beak _____

Brindley _____

SEC. _____ TEMP. 31°

Schrofer _____

DESCRIPTION Pts to Control Points JOB NO. _____

	LEFT	CENTER LINE	RIGHT
189+1374 = P.I.		86.63'	N.E. To Shiner in P.P. (2)
21	Ed. R.R. Spt.	57.29'	S.E. To Shiner in T.P. (2)
	To Surface	48.99'	S. To Iron Fence Post (2)
190+1270 = P.O.T. (E S.R. #295)		70.39'	N. To Iron Fence Post (2)
22	Ed. R.R. Spt.	43.92'	N.W. To Shiner in P.P. (2)
	To Surface	66.93'	S.W. To Shiner in T.P. (2)
207+9589 = P.I.		44.23'	N.E. To Shiner in P.P. (2)
23	Ed. R.R. Spt.	71.39'	S.E. To Shiner in T.P. (2)
	To Surface	82.36'	S. To Shiner in 30" Tree (2)
216+0984 = P.I.		72.44'	N.E. To Shiner in P.P. (2)
24	Ed. R.R. Spt.	90.07'	N.W. To R/W Mon. (2)
	To Surface	43.06'	S.E. To Shiner in T.P. (2)
		89.84'	S.W. To R/W Mon. (2)
237+3802 = P.I.		81.20'	N.E. To Shiner in P.P. (2)
25	Ed. R.R. Spt.	44.51'	S.E. To Shiner in 8" Tree (2)
	To Surface	40.46'	S.S.E. To 1" I.P. 6" Above Ground (2)
		62.60'	S.W. To Shiner in T.P. (2)
258+8870 = P.I.		69.20'	N.E. To Shiner in P.P. (2)
26	Ed. R.R. Spt.	44.18'	S.E. To Shiner in T.P. (2)
	To Surface	39.77'	S.W. To Shiner in 8" Maple (2)

PERSONNEL TITLE PERSONNEL TITLE
 Silvester _____
 # _____
 crew _____

COUNTY Lucas DATE 1958

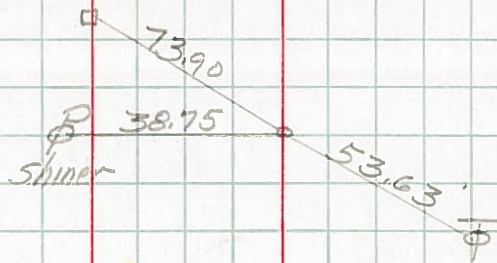
S. R. #24 WEATHER

SEC. Ho-Luc. - Waterville TEMP. (0.00)

DESCRIPTION LEFT CENTER LINE RIGHT JOB NO.

1/0

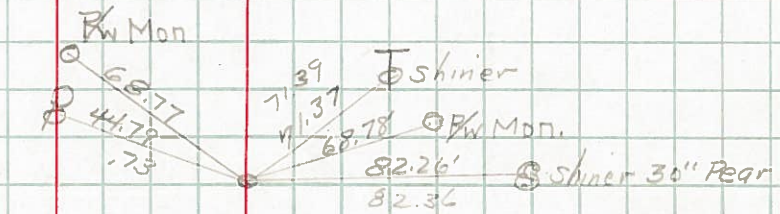
P.T. 189+95.55



✓

P.I. Sta. 207+45.89
R.R. Spk. set

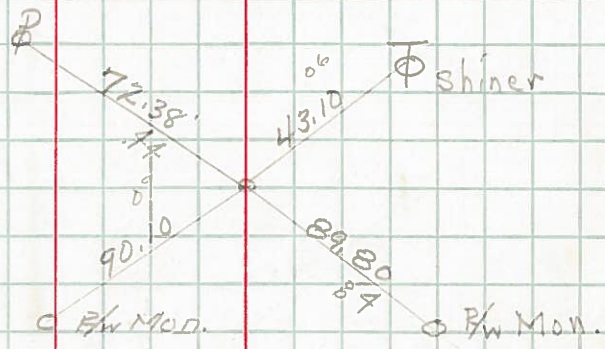
23



✓

P.I. Sta. 216+09.84
R.R. Spk.

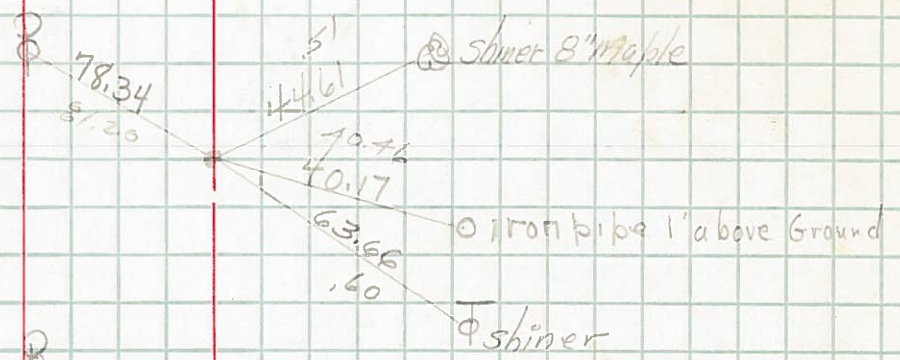
24



✓

P.I. Sta. 237+38.02
R.R. Spk. Set

25



✓

P.I. Sta. 258+88.70
R.R. Spk. Set

26

