

O.D.O.T. DISTRICT 2 SURVEY OFFICE

PERSONNEL _____

REFERENCE NO. 24

SHEET 30 OF 68

NOTES Huss

H.C. Van Dusen

R.C. Cardes

Flag Cox

DATE 6-2-97

WEATHER Cldy-Rain

TEMP. +57°F

ROUTE US-24

COUNTY Lucas

TOWNSHIP Providence

SECTION 34

T 6 N R 9 E

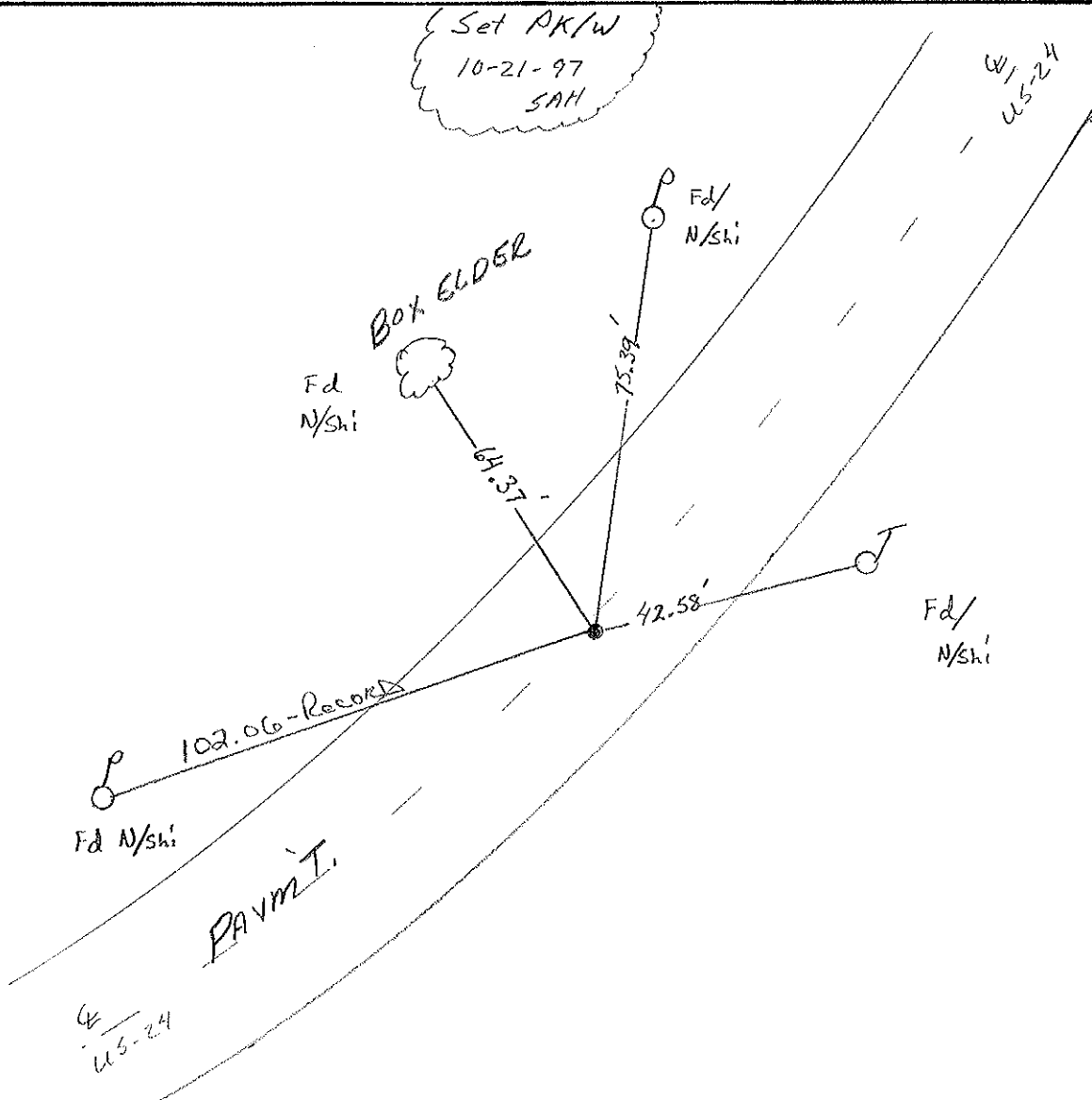
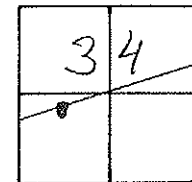
TYPE MONUMENT PK/W

ON SURFACE - ~~BELOW~~ Yes

~~LEFT PAVT.~~ - RIGHT 2.0 Rt

9.4' TO Rt. EDGE PAVEMENT

S.L.M. 216+16



O.D.O.T. DISTRICT 2 SURVEY OFFICE

PERSONNEL _____

REFERENCE NO. 24

SHEET 23 OF _____

NOTES LOHRKE

H.C. CANTERBURY

R.C. CORDS

DATE 10-11-94

WEATHER CLEAR

TEMP. +55

Set P.K. WASHER
5-15-95
C.L.

ROUTE US#24

COUNTY LUCAS

TOWNSHIP PROVIDENCE

SECTION 34

T 6 N R 9 E

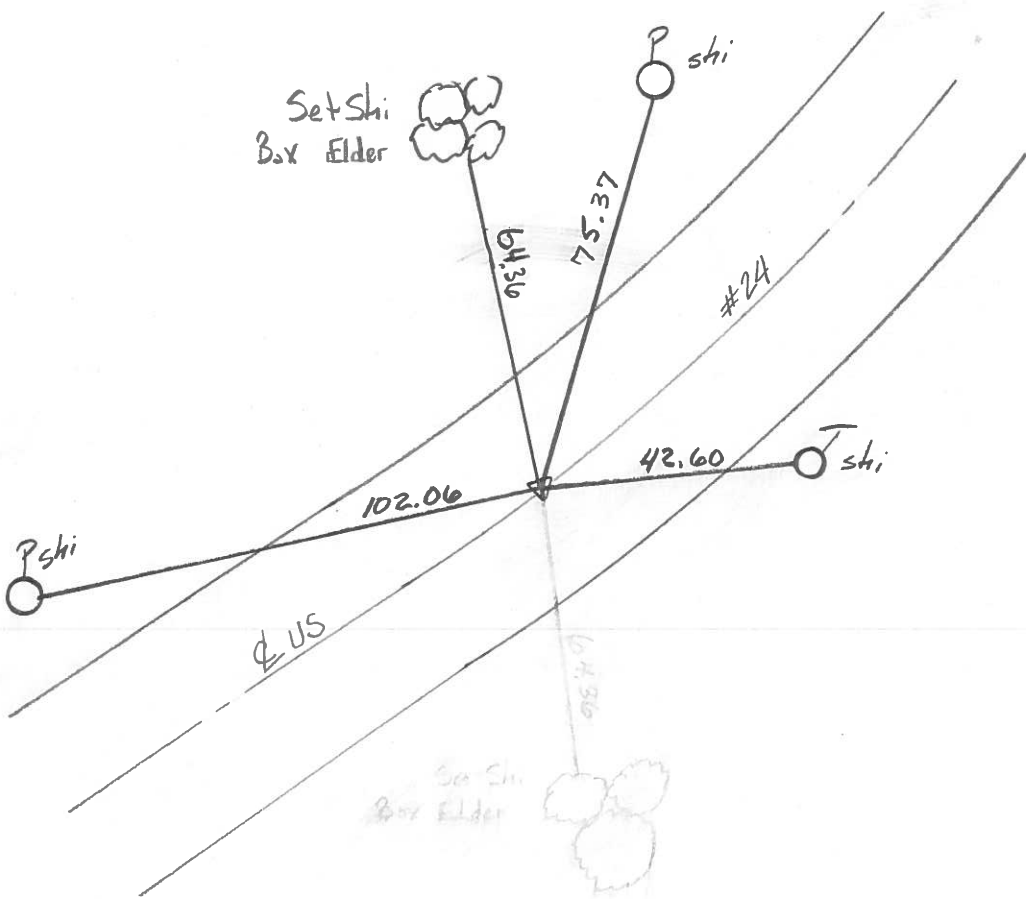
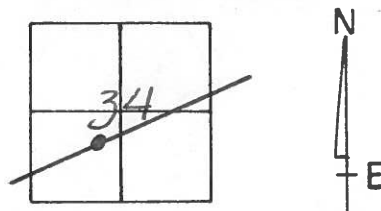
TYPE MONUMENT P.K. NAIL

ON SURFACE - ~~BELOW~~ Yes

~~LEFT - & PAV'T.~~ - RIGHT 2.4 RT

2.0 TO RT EDGE PAVEMENT

S.L.M. 215+50



O.D.O.T. DISTRICT 2 SURVEY OFFICE

PERSONNEL _____

REFERENCE NO. 24

SHEET 23 OF _____

NOTES 1. Stone

H.C. D. Curtis

R.C. J. Hoos

DATE 29 Aug. 89

WEATHER Humid

TEMP. 85°

ROUTE US #24

COUNTY Lucas

TOWNSHIP Providence

SECTION 34

T _____ R _____

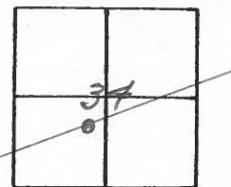
TYPE MONUMENT PK No. 1

ON SURFACE - BELOW Surface

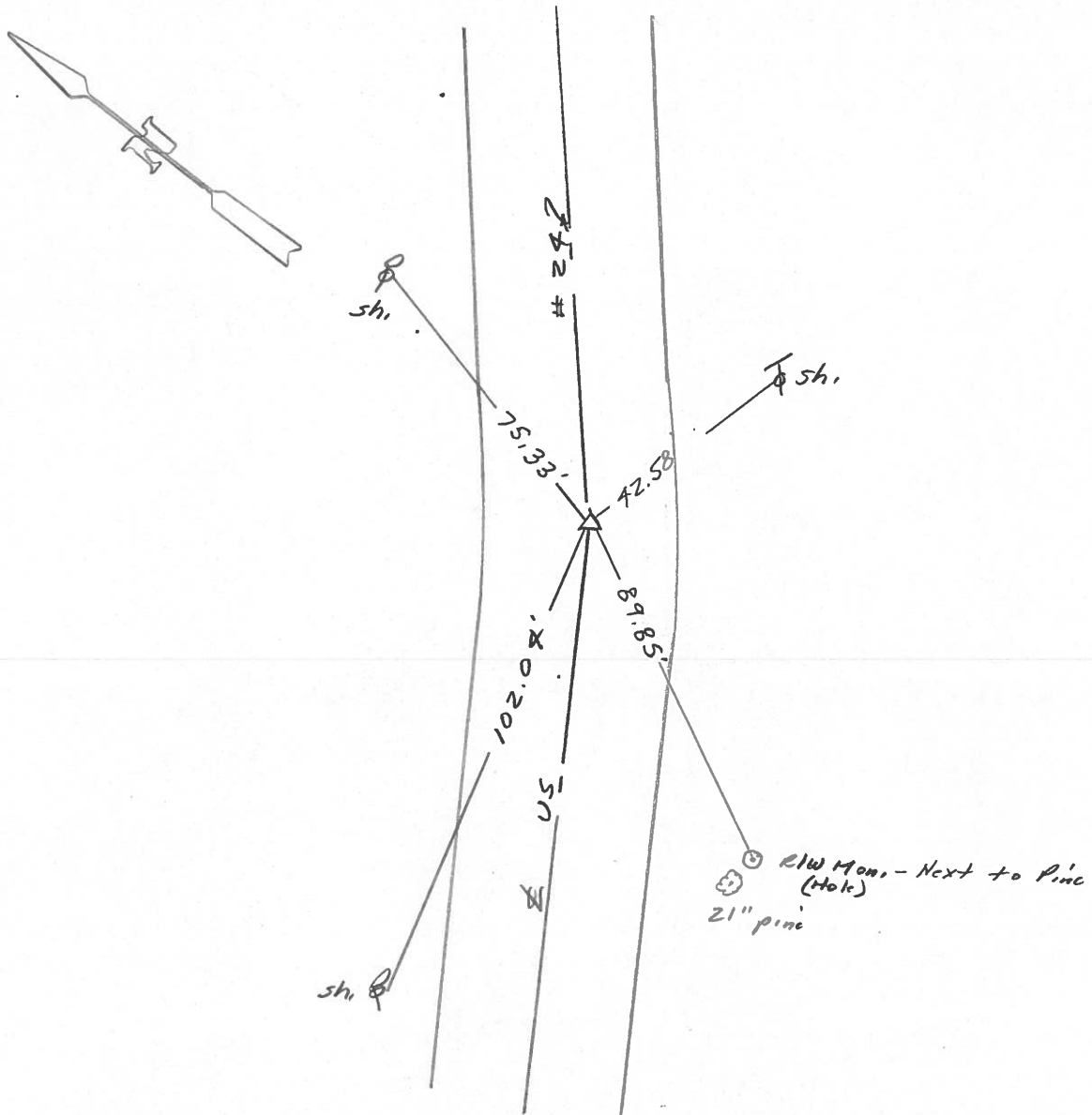
LEFT - & PAV'T. - RIGHT _____

TO _____ EDGE PAVEMENT

S.L.M. 215468



Set PK Nail 10/13/89 IRS



O.D.O.T. DISTRICT 2 SURVEY OFFICE

Sht. 29 of

County Lucas S.R. US#24

Township Providence

Section 34

T N, R E

Personnel I. Stone

R. Michalak

P. Neuser

D. Curtis

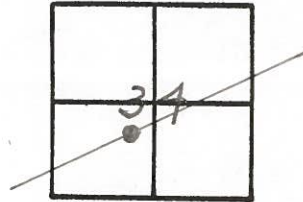
D. Granaty

24

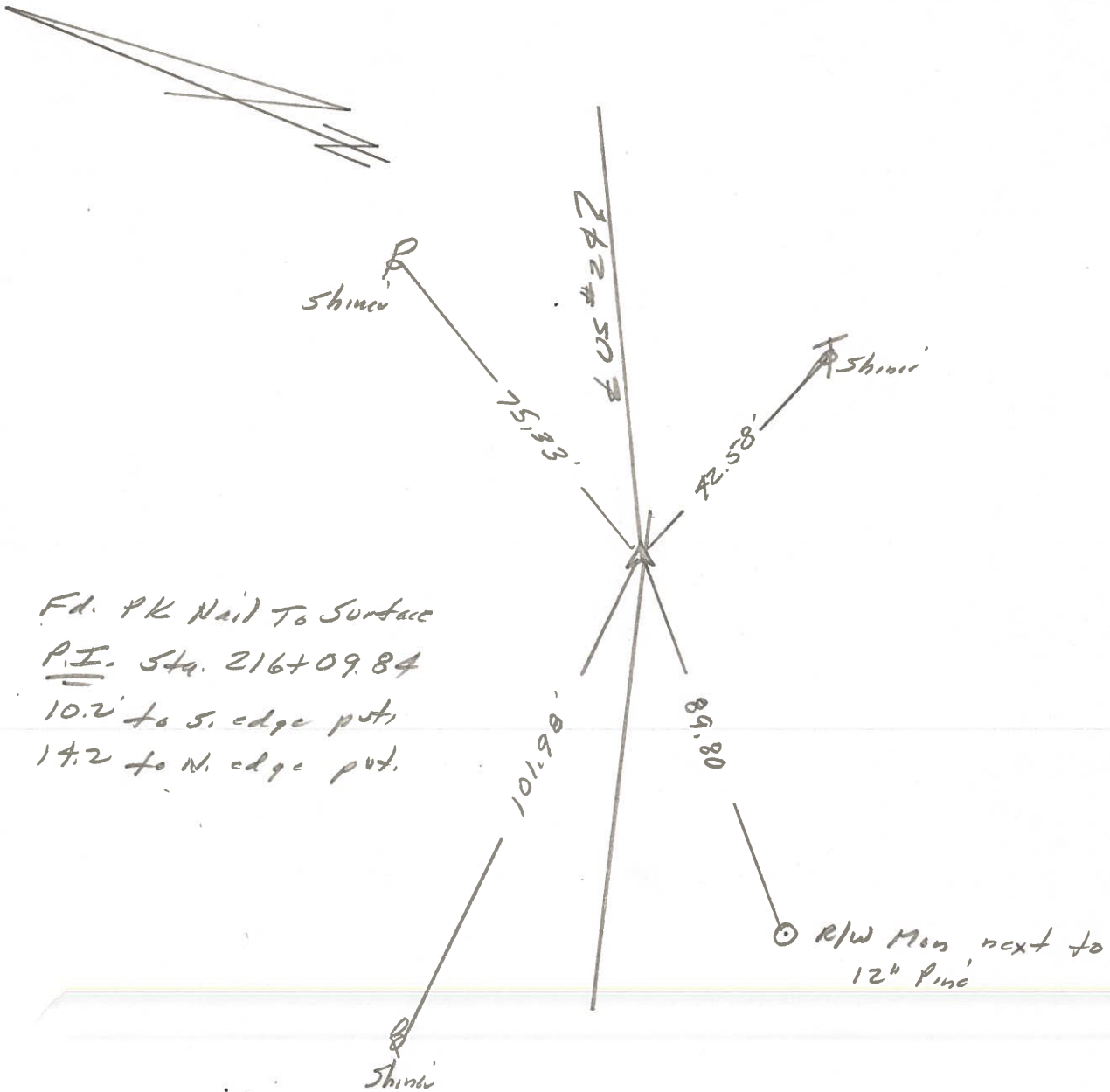
Date 9 July 1980

Weather Fair

Temp. 78°

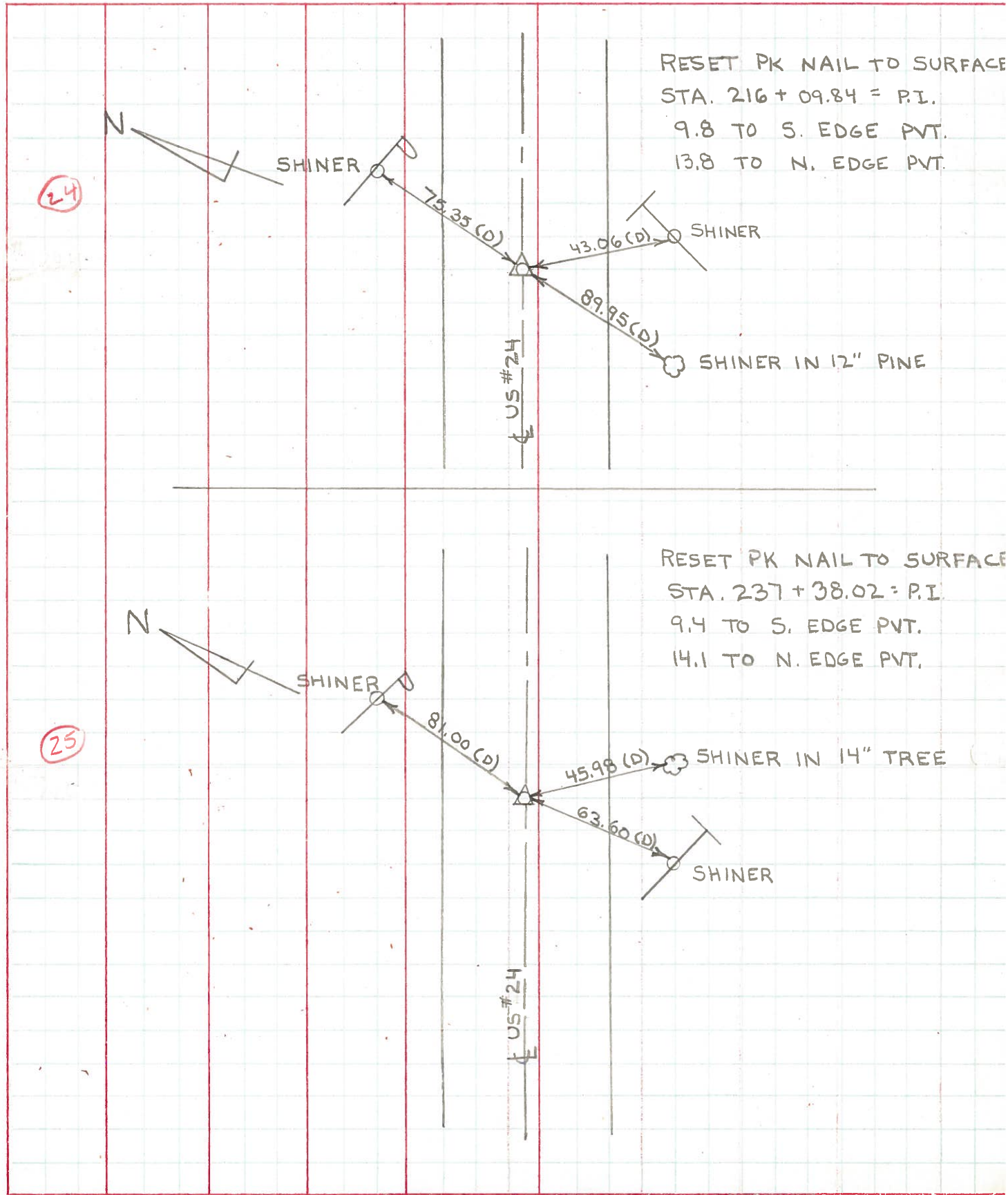


REF. NO. 4224



PERSONNEL	TITLE	PERSONNEL	TITLE	COUNTY	DATE
W. DENNO				LUCAS	
D. CURTIS				U.S.# 24	WEATHER SUNNY - WARM
D. STEVENS					TEMP. 80±
R. BRANNAN					

DESCRIPTION REFERENCES TO CONTROL POINTS LEFT CENTER LINE RIGHT JOB NO.



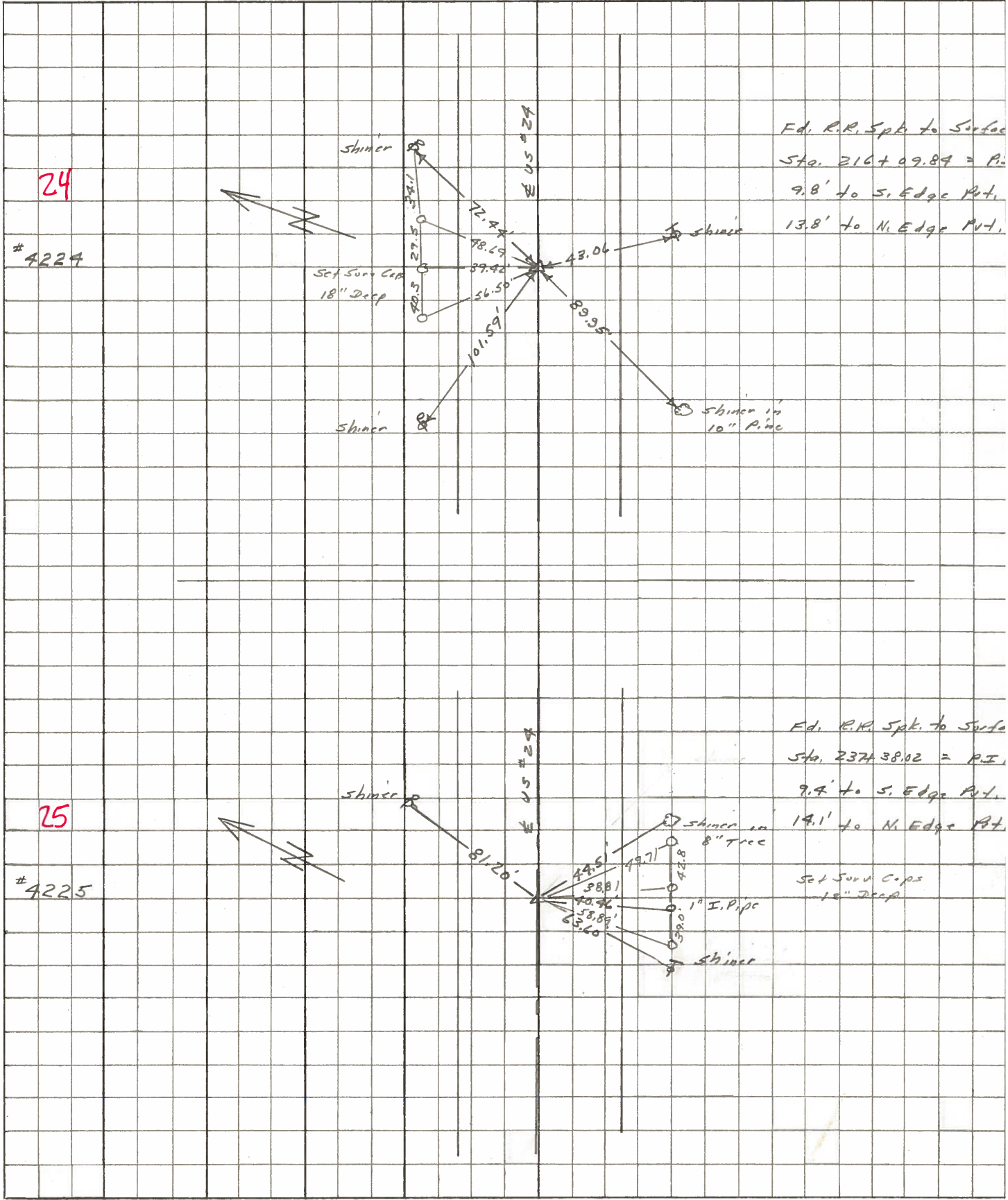
(24)

(25)

PERSONNEL	TITLE	PERSONNEL	TITLE	COUNTY	DATE
Stone	Notes			Lucas	May 68
Beck	Flag			S. R. # 24	WEATHER Fair
Michalak	Tape			SEC.	TEMP.
Schroder	Tape				

DESCRIPTION References to Control Points JOB NO. _____

LEFT CENTER LINE RIGHT



PERSONNEL	TITLE	PERSONNEL	TITLE	COUNTY	DATE
<u>Slone</u>				<u>Lucas</u>	<u>3 Feb. 66</u>
<u>Brak</u>				S. R. <u>29</u>	WEATHER <u>Clear</u>
<u>Brindley</u>				SEC. _____	TEMP. <u>31°</u>
<u>Schroder</u>					

DESCRIPTION _____ Pts to Central Points _____ JOB NO. _____

	LEFT	CENTER LINE	RIGHT
189+1374 = P.I.		86.63'	N.E. To Shiner in P.P. (D)
21	Ed. R.R. Spt.	57.29'	S.E. To Shiner in T.P. (D)
	To Surface	48.99'	S. To Iron Fence Post (D)
190+1270 = P.O.T. (E S.R. #295)		70.39'	N. To Iron Fence Post (D)
22	Ed. R.R. Spt.	43.92'	N.W. To Shiner in P.P. (D)
	To Surface	66.93'	S.W. To Shiner in T.P. (D)
207+9589 = P.I.		77.23'	N.E. To Shiner in P.P. (D)
23	Ed. R.R. Spt.	71.39'	S.E. To Shiner in T.P. (D)
	To Surface	82.36'	S. To Shiner in 30" Tree (D)
216+0984 = P.I.		72.44'	N.E. To Shiner in P.P. (D)
24	Ed. R.R. Spt.	70.07'	N.W. To R/W Man. (D)
	To Surface	43.06'	S.E. To Shiner in T.P. (D)
		87.84'	S.W. To R/W Man. (D)
232+3802 = P.I.		81.20'	N.E. To Shiner in P.P. (D)
25	Ed. R.R. Spt.	44.51'	S.E. To Shiner in 8" Tree (D)
	To Surface	40.46'	S.S.E. To 1" I.P. 6" Above Ground (D)
		62.60'	S.W. To Shiner in T.P. (D)
258+8870 = P.I.		69.20'	N.E. To Shiner in P.P. (D)
26	Ed. R.R. Spt.	44.18'	S.E. To Shiner in T.P. (D)
	To Surface	39.77'	S.W. To Shiner in 8" Maple (D)

PERSONNEL	TITLE	PERSONNEL	TITLE
Silvester			
4			
Crew			

COUNTY Lucas DATE 1958

S. R. #24 WEATHER _____

SEC. Hc-Luc. - Waterville TEMP. _____
(0.00)

