

O.D.O.T. DISTRICT 2 SURVEY OFFICE

PERSONNEL _____

REFERENCE NO. 25

SHEET 31 OF 68

NOTES Huss

H.C. Van Dusen

R.C. Cordes

Flag Cox

DATE 6-2-97

WEATHER Cldy - Rain

TEMP. +57°F

ROUTE US-24

COUNTY Lucas

TOWNSHIP Providence

SECTION 34

T. 6 N. R. 9 E

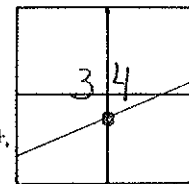
TYPE MONUMENT PK & WASHER'S (A) (B) (C)

ON SURFACE - BELOW ON _____

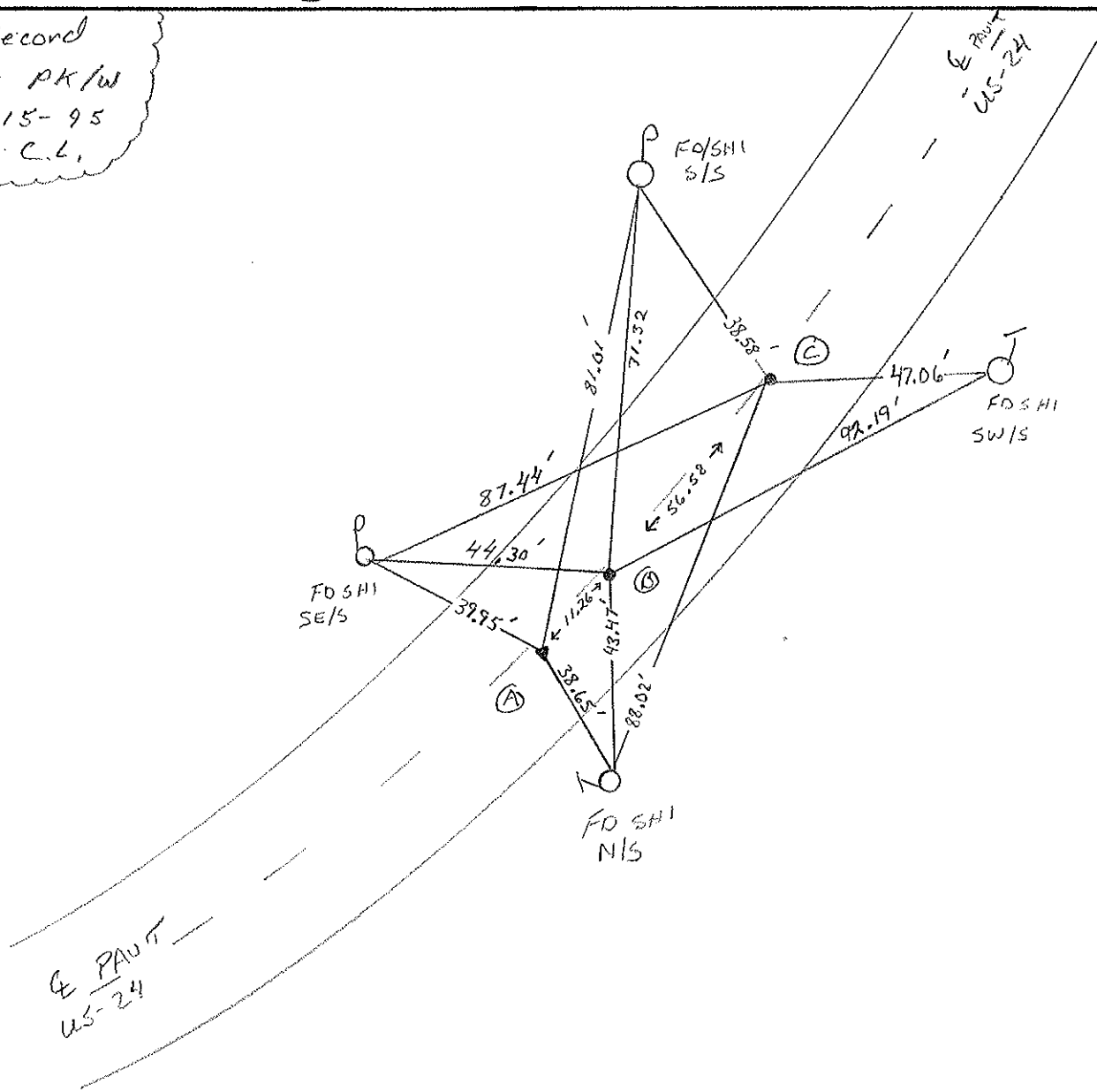
LEFT - ☉ PAV'T. - RIGHT (A) 2.1' RT. (B) 2.0' RT (C) 1.1 RT

(A) 9.6 TO RT EDGE PAVEMENT (B) 9.8 to RT (C) 10.7 to RT.

S.L.M. (A) 236+80 (B) 236+91 (C) 237+48



Record
Set PK/W
5-15-95
C.L.



O.D.O.T. DISTRICT 2 SURVEY OFFICE

PERSONNEL _____

REFERENCE NO. 25

SHEET 24 OF _____

NOTES LOENRKE

H.C. CANTERBURY

R.C. CORBES

DATE 10-11-94

WEATHER CLEAR

TEMP. +55

Set P.K./WASHER
5-15-95
C.L.

ROUTE US # 24

COUNTY LUCAS

TOWNSHIP PROVIDENCE

SECTION 34

T. 6 N. 9 E.

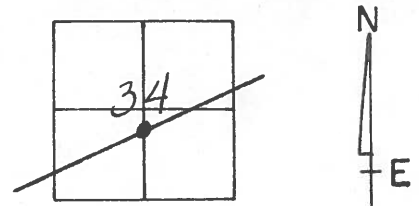
TYPE MONUMENT P.K. NAIL'S

ON SURFACE - BELOW Yes

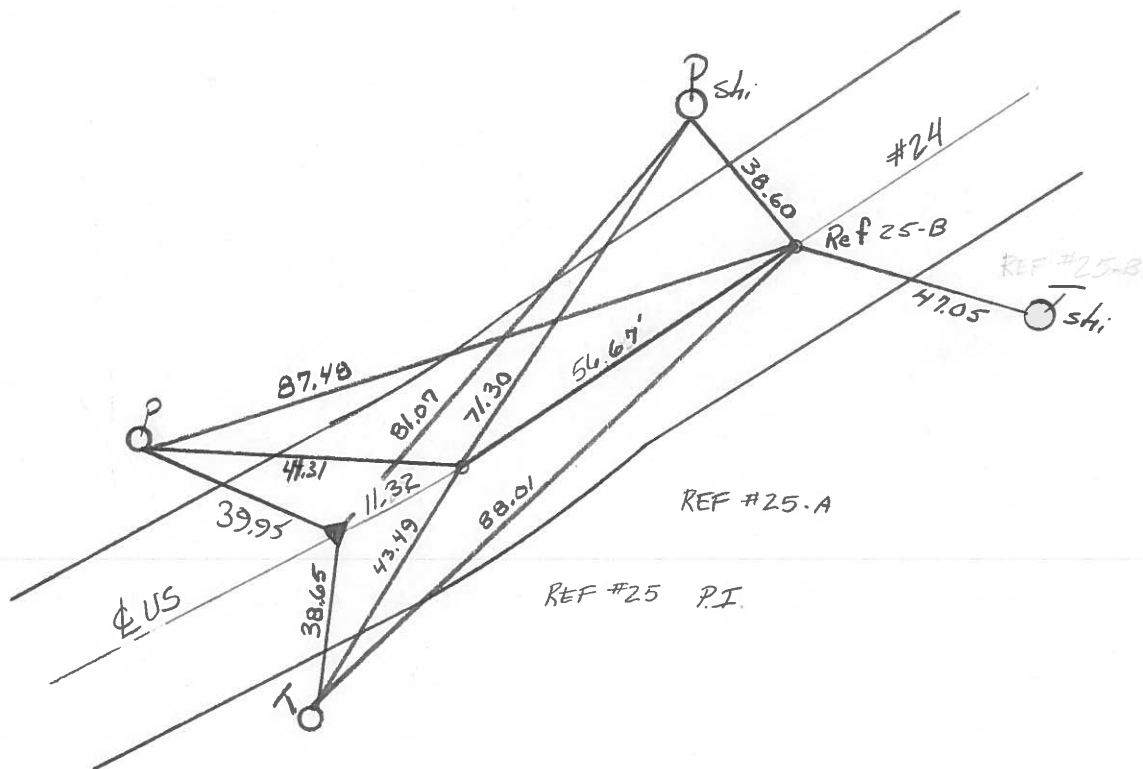
LEFT - CL PAV'T. - RIGHT 1.9 Rt

8.9 TO Rt EDGE PAVEMENT

S.L.M. REF #25 = 236 + 94



P.I.



O.D.O.T. DISTRICT 2 SURVEY OFFICE

PERSONNEL

REFERENCE NO. 25

SHEET 24 OF

NOTES 1. Stone

H.C. D. Curtis

R.C. J. Haushalter

DATE 29 Aug. 89

WEATHER Humid

TEMP. 85°

ROUTE US #24

COUNTY Lucas

TOWNSHIP Providence

SECTION 34

T R

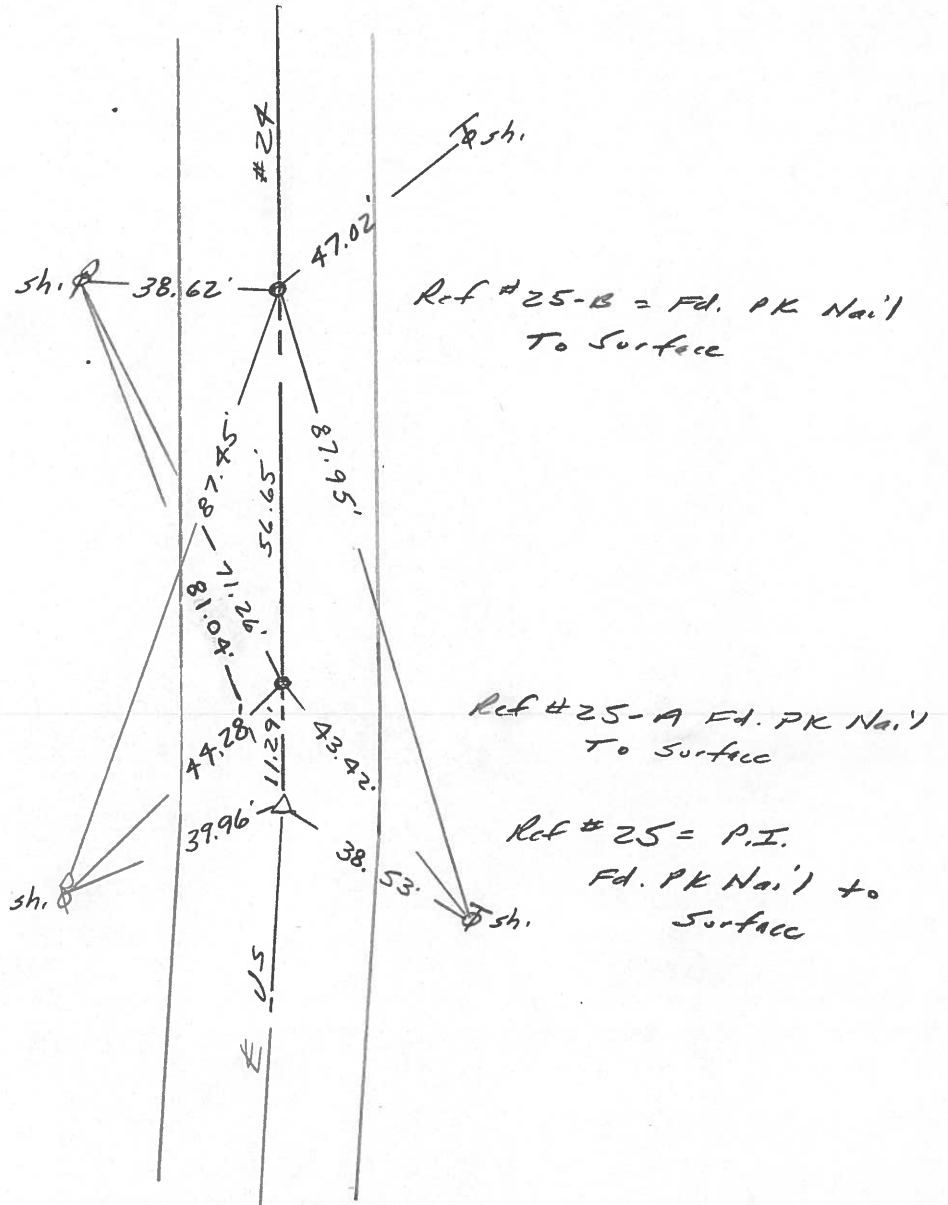
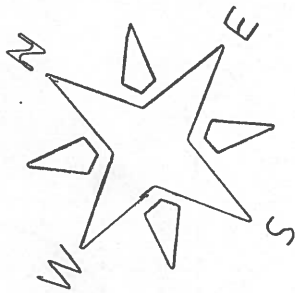
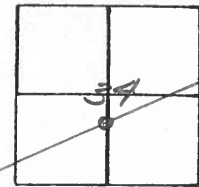
TYPE MONUMENT PK Nails

ON SURFACE - BELOW Surface

LEFT - PAV'T. - RIGHT

 TO EDGE PAVEMENT

S.L.M. #25 = 237+94



O.D.O.T. DISTRICT 2 SURVEY OFFICE

Sht. 30 of

County Lucas S.R. US#24

Township Providence

Section 34

T N, R E

Personnel L. Stone

R. Michalak

P. Neuser

D. Curtis

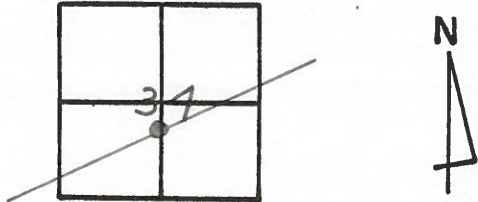
D. Granata

25

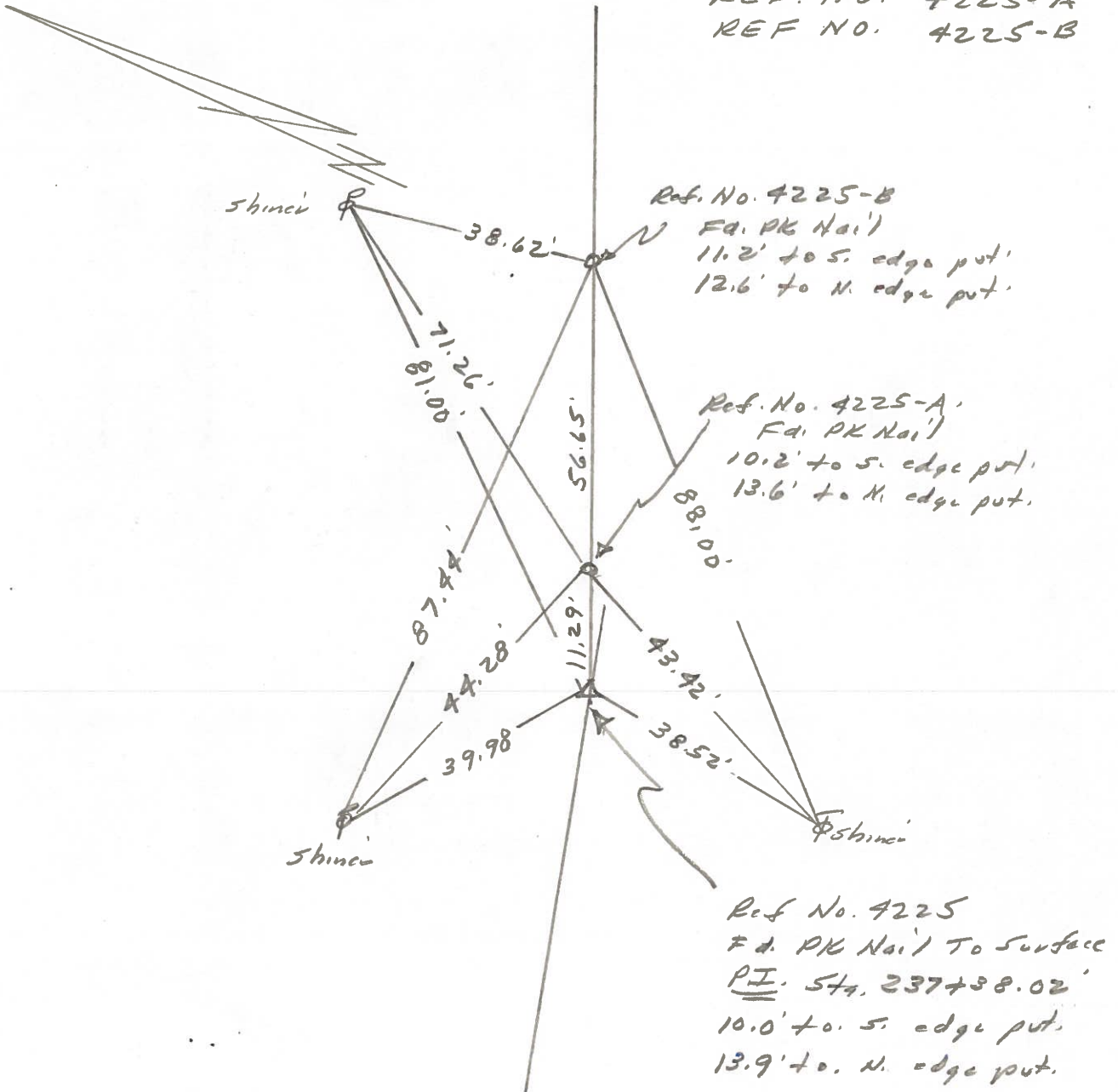
Date 9 July 1980

Weather Fair

Temp. 79°

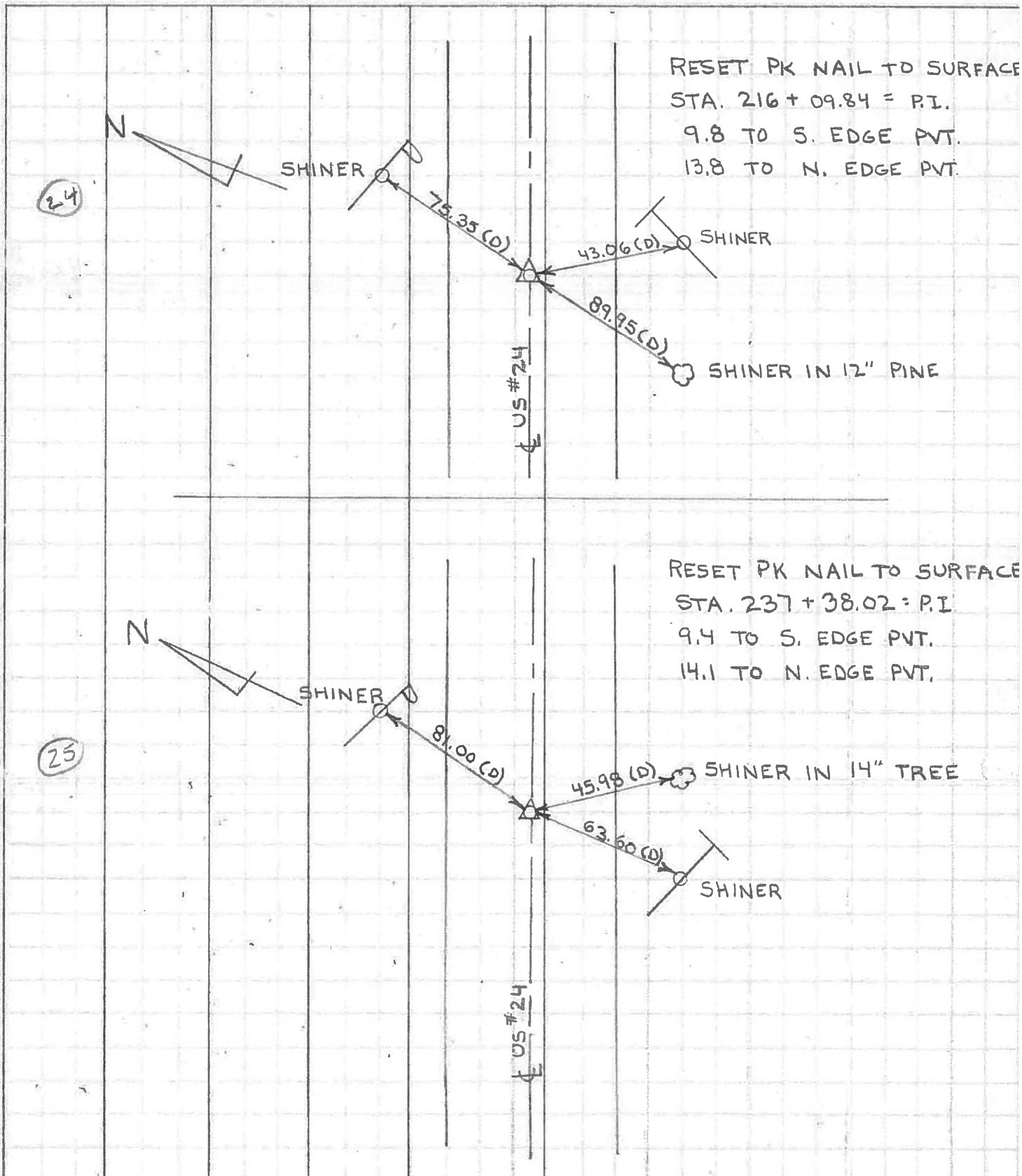


REF. NO. 4225
REF. NO. 4225-A
REF. NO. 4225-B



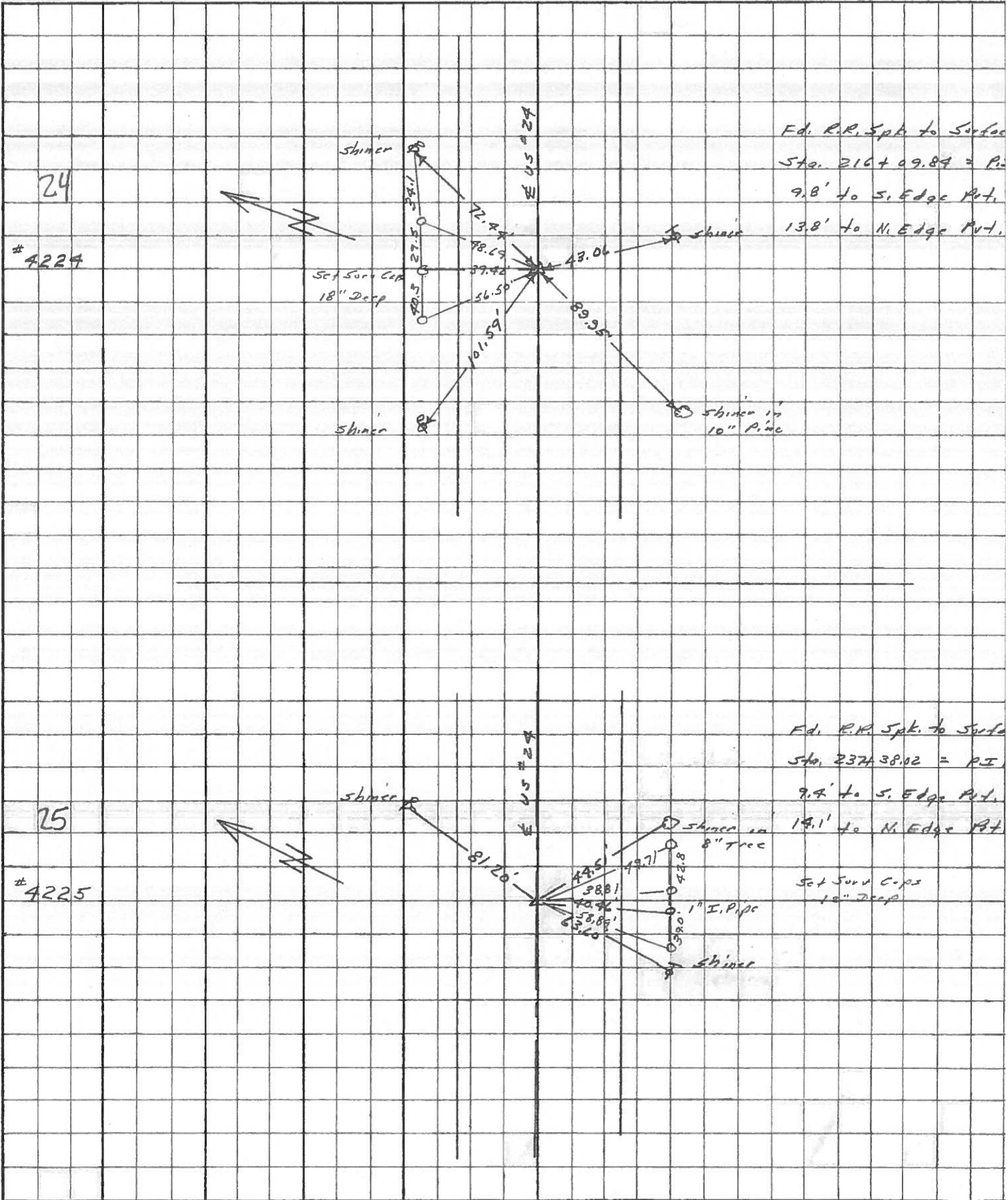
PERSONNEL	TITLE	PERSONNEL	TITLE	COUNTY	<u>LUCAS</u>	DATE	
<u>W. DENNO</u>				S. R.	<u>US # 24</u>	WEATHER	<u>SUNNY - WARM</u>
<u>D. CURTIS</u>				SEC.		TEMP.	<u>80±</u>
<u>D. STEVENS</u>							
<u>R. BRANNAN</u>							

DESCRIPTION REFERENCES TO CONTROL POINTS JOB NO. _____



PERSONNEL	TITLE	PERSONNEL	TITLE	COUNTY	DATE	WEATHER	TEMP.
Stone	Notes			Lucas	May 68	Fair	
Beck	Flag			S. R. # 24			
Michalak	Tape			SEC.			
Schroder	Tape						

DESCRIPTION References to Control Points JOB NO. _____
 LEFT CENTER LINE RIGHT



PERSONNEL TITLE PERSONNEL TITLE

COUNTY Lucas DATE Feb. 66

Shaner _____

S. R. 29 WEATHER Clear

Beck _____

Bradley _____

SEC. _____ TEMP. 31°

Schrofer _____

DESCRIPTION Pts to Central Points JOB NO. _____

LEFT CENTER LINE RIGHT

DESCRIPTION	LEFT	CENTER LINE	RIGHT
189+1374 = P.I. Ed. R.R. Spt. 21 To Surface		86.63' 57.29' 48.99'	N.E. To Shiner in P.P. (D) S.E. To Shiner in T.P. (D) S. To Iron Fence Post (D)
190+1270 = P.O.T. (E.S.R. #295) Ed. R.R. Spt. 22 To Surface		70.39' 43.92' 66.93'	N. To Iron Fence Post (D) N.W. To Shiner in P.P. (D) S.W. To Shiner in T.P. (D)
207+9589 = P.I. Ed. R.R. Spt. 23 To Surface		44.23' 71.39' 82.36'	N.E. To Shiner in P.P. (D) S.E. To Shiner in T.P. (D) S. To Shiner in 30" Tree (D)
216+0984 = P.I. Ed. R.R. Spt. 24 To Surface		72.44' 90.07' 43.06' 89.84'	N.E. To Shiner in P.P. (D) N.W. To R/W Mon. (D) S.E. To Shiner in T.P. (D) S.W. To R/W Mon. (D)
237+3802 = P.I. Ed. R.R. Spt. 25 To Surface		81.20' 44.51' 40.46' 62.60'	N.E. To Shiner in P.P. (D) S.E. To Shiner in 8" Tree (D) S.S.E. To 1" I.P. 6" Above Ground (D) S.W. To Shiner in T.P. (D)
258+8870 = P.I. Ed. R.R. Spt. 26 To Surface		69.20' 44.18' 39.77'	N.E. To Shiner in P.P. (D) S.E. To Shiner in T.P. (D) S.W. To Shiner in 8" Maple (D)

PERSONNEL	TITLE	PERSONNEL	TITLE
Silvester			
#			
crew			

COUNTY Lucas DATE 1958
 S. R. #24 WEATHER _____
 SEC. He-Luc. - Waterville TEMP _____
 (0.00)

DESCRIPTION LEFT CENTER LINE RIGHT JOB NO.

