

O.D.O.T. DISTRICT 2 SURVEY OFFICE

PERSONNEL

REFERENCE NO. 26

SHEET 33 OF 68

NOTES S. HUSS

H.C. B. VANPUSEN

R.C. B. CORDES

C. COX

DATE 6-2-97

WEATHER CLOUDY / RAIN

TEMP. +59°F

ROUTE US-24

COUNTY Lucas

TOWNSHIP Providence

SECTION 26

T. 6 N. R. 9 E

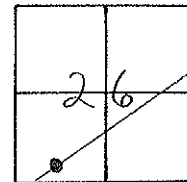
TYPE MONUMENT PK & WASHER

ON SURFACE - ~~BELOW~~ ON SURFACE

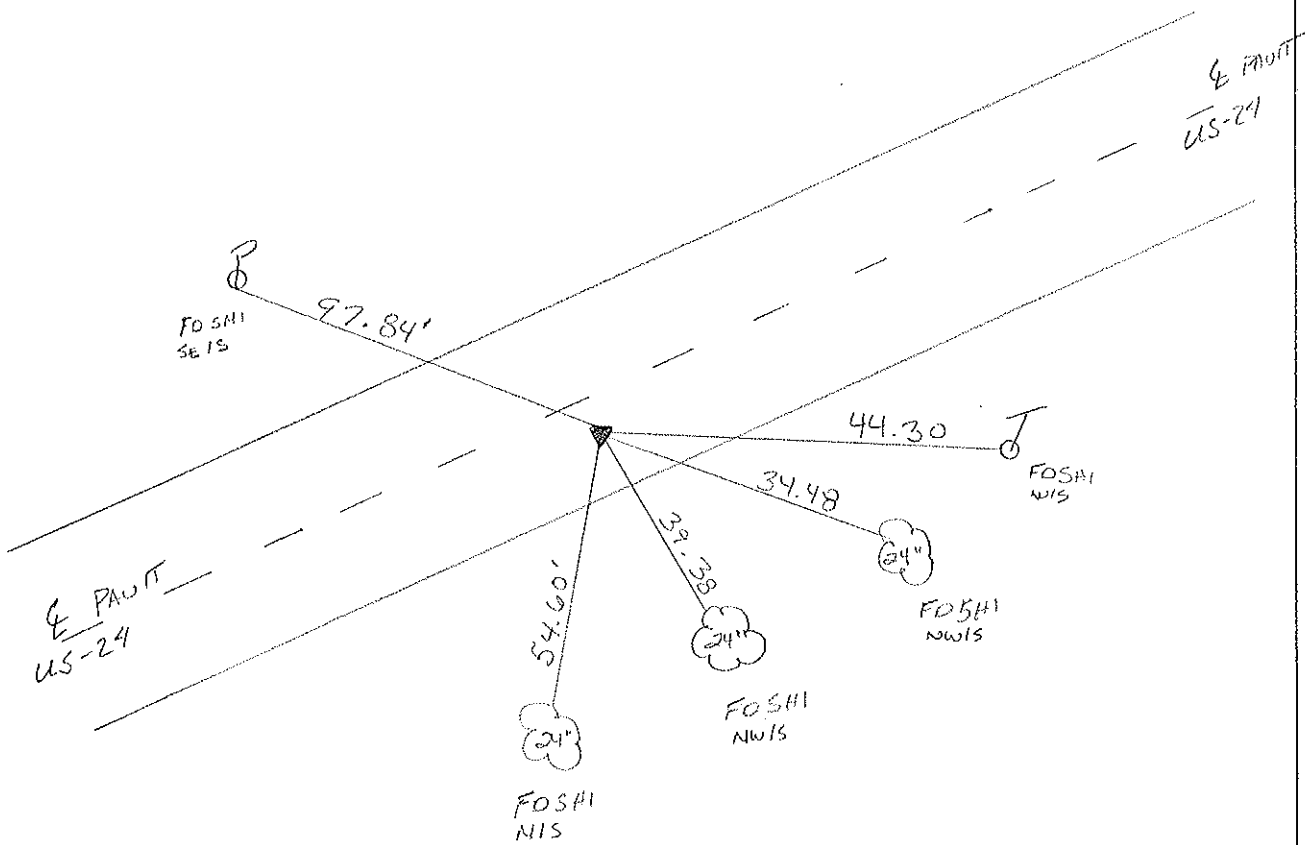
LEFT - ~~C~~ PAV'T. - RIGHT 3.6' RT

7.7 TO RT EDGE PAVEMENT

S.L.M. 258 +89



SET PK/WASHER
 10-21-97
 SAA



O.D.O.T. DISTRICT 2 SURVEY OFFICE

PERSONNEL _____

REFERENCE NO. 26

SHEET 26 OF _____

NOTES LOHRKE

H.C. CANTERBURY

R.C. CORDS

DATE 10-11-94

WEATHER CLEAR

TEMP. +55

ROUTE U.S. 24

COUNTY LUCAS

TOWNSHIP PROVIDENCE

SECTION 26

T 6 N R 9 E

Set
P.K. / WASHER
5-11-95

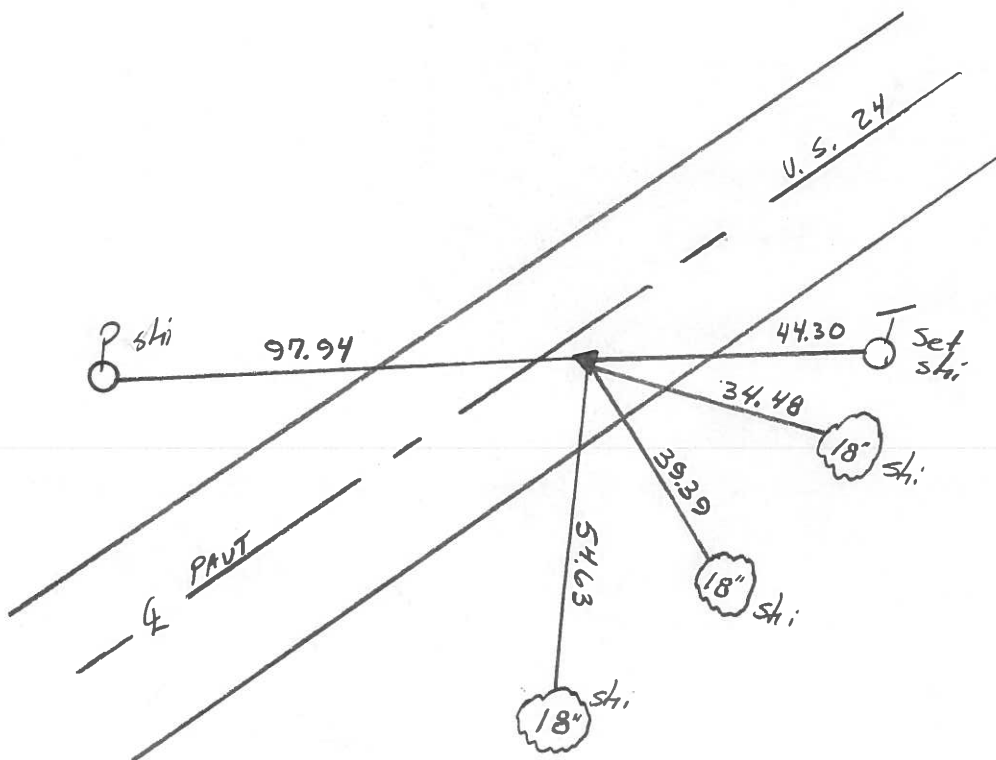
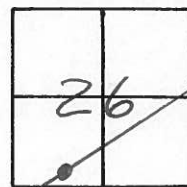
TYPE MONUMENT P.K. NAIL

ON SURFACE - ~~BELOW~~ Yes

~~LEFT~~ - Q PAVT. - RIGHT 3.8 Rt

7.6 TO Rt EDGE PAVEMENT

S.L.M. 258+26



O.D.O.T. DISTRICT 2 SURVEY OFFICE

PERSONNEL _____

REFERENCE NO. 26

SHEET 26 OF _____

NOTES 1. Stone

H.C. D. Curtis

R.C. J. Hausholder

DATE 30 Aug. 89

WEATHER Clear

TEMP. 75°

ROUTE US #27

COUNTY Lucas

TOWNSHIP Providence

SECTION 26

T _____ R _____

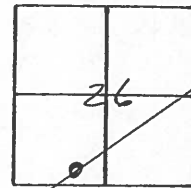
TYPE MONUMENT PK Nail

ON SURFACE - BELOW Surface

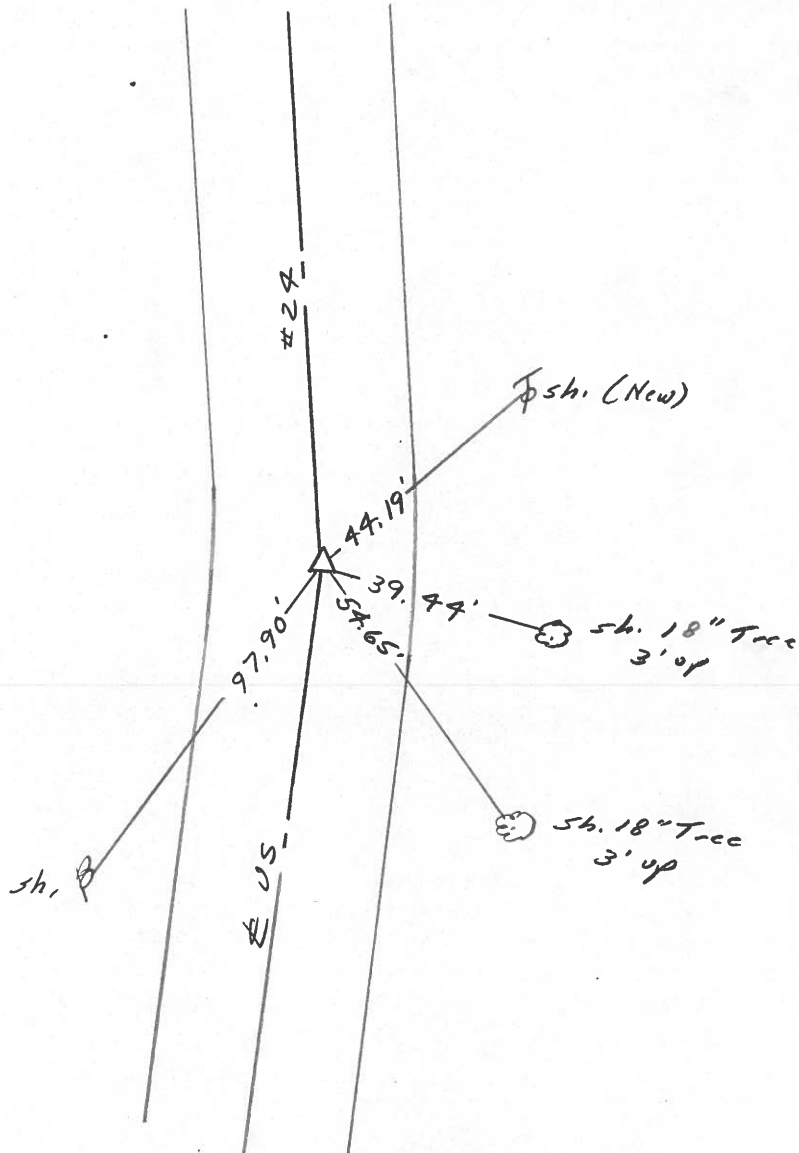
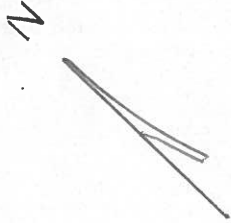
LEFT - \odot PAV'T. - RIGHT _____

_____ TO _____ EDGE PAVEMENT

S.L.M. 258+44



Set PK Nail 10/13/89 IK5



Q.D.O.T. DISTRICT 2 SURVEY OFFICE

Sht. 32 of

County Lucas S.R. US #24

Date 17 July 1980

Township Providence

Weather Windy

Section 26

Temp. 80°

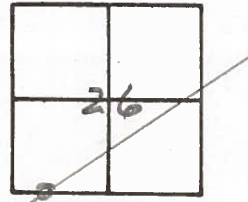
T N, R E

Personnel J. Stone

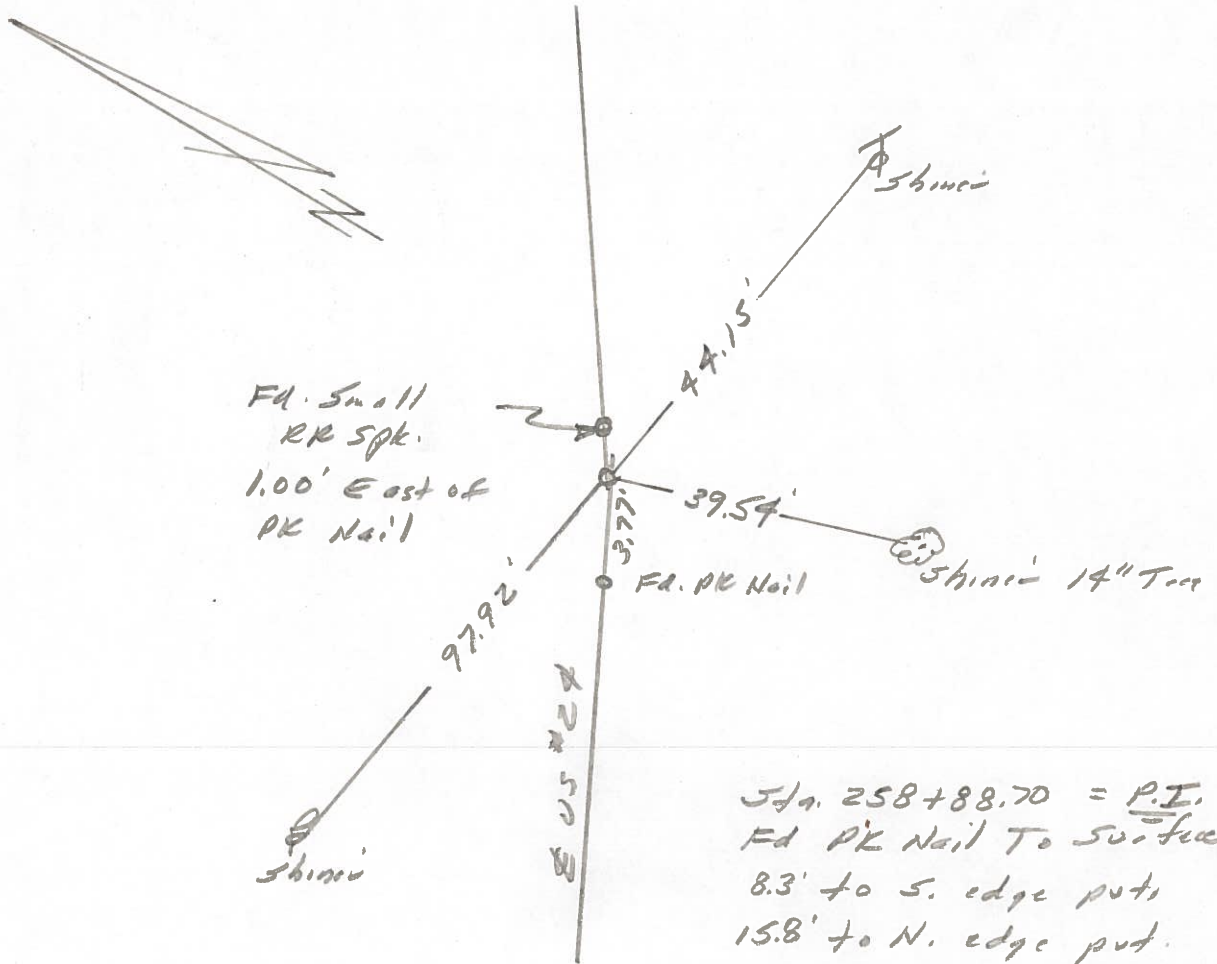
P. Neuser

D. Curtis

26

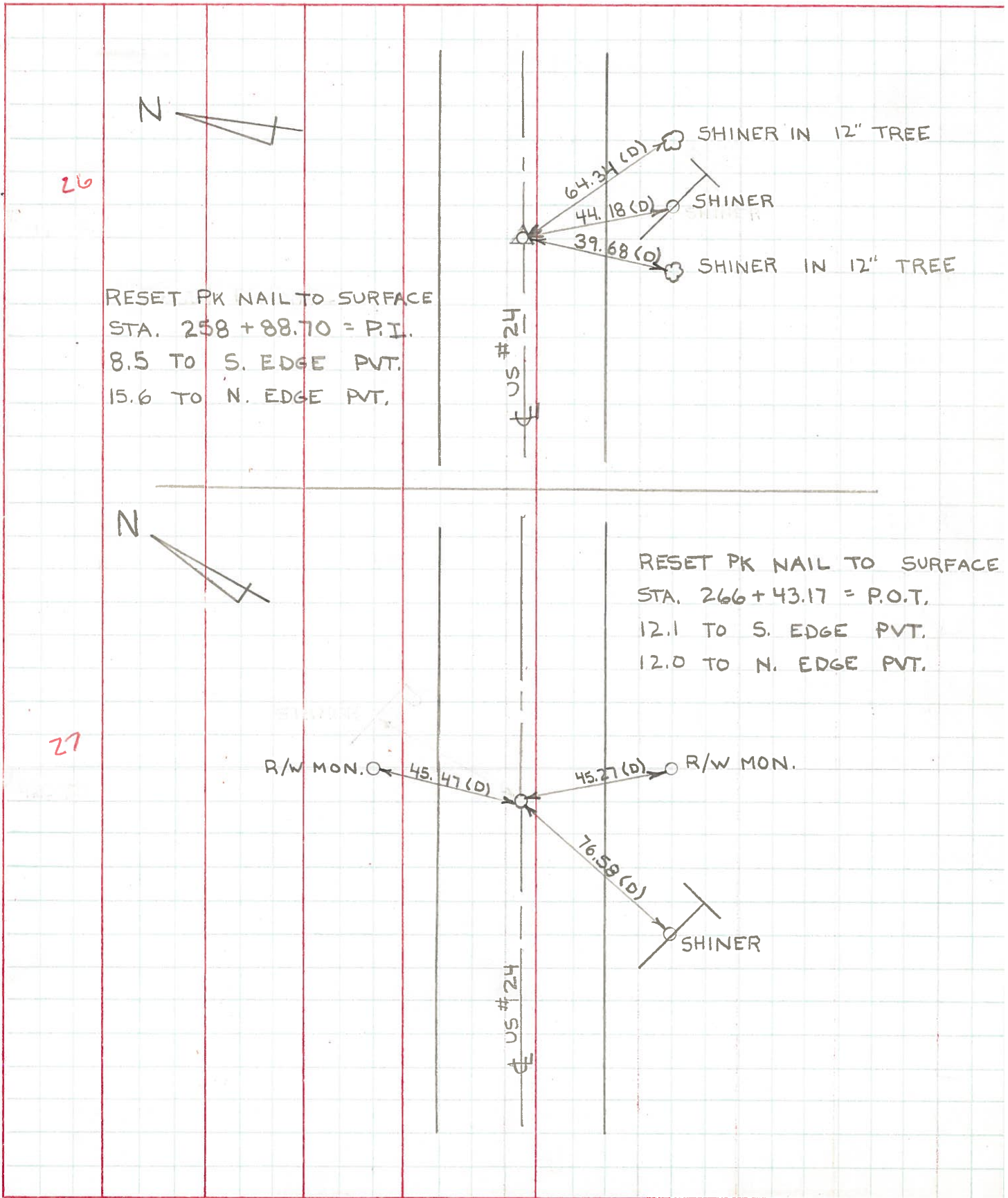


Ref. No. 4226



PERSONNEL	TITLE	PERSONNEL	TITLE	COUNTY	DATE
W. DENNO				LUCAS	JULY 7, 1971
D. CURTIS				S. R. US # 24	WEATHER SUNNY - WAI
D. STEVENS					TEMP. 85±
R. BRANNAN					

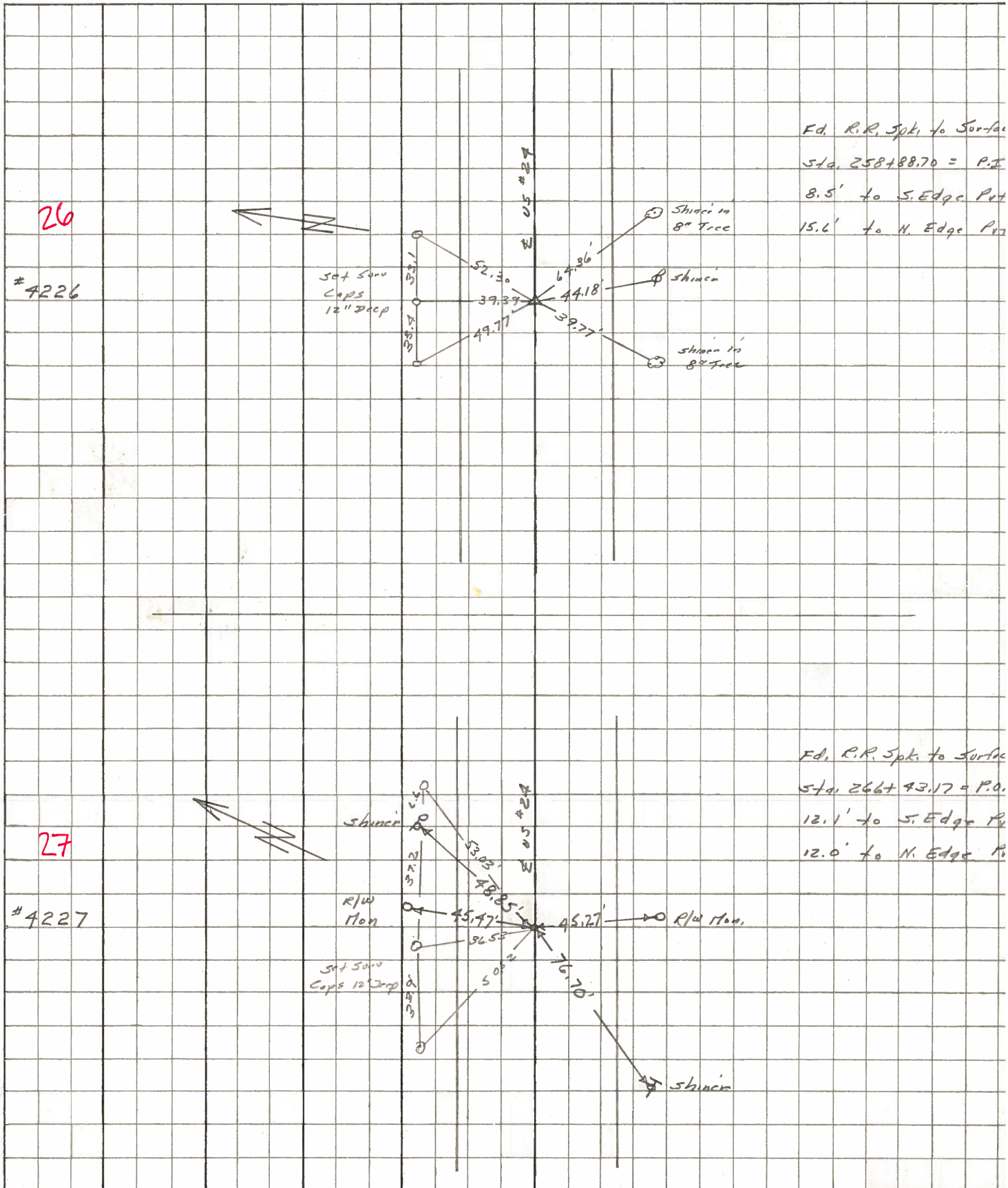
DESCRIPTION REFERENCES TO CONTROL POINTS LEFT CENTER LINE RIGHT JOB NO.



PERSONNEL	TITLE	PERSONNEL	TITLE	COUNTY	Lucas	DATE	May 68
Stone	Notes			S. R.	# 24	WEATHER	Fair
Beck	Flag			SEC.		TEMP.	
Michalak	Tape						
Schroder	Tape						

DESCRIPTION References to Control Points JOB NO. _____

LEFT CENTER LINE RIGHT



PERSONNEL	TITLE	PERSONNEL	TITLE	COUNTY	DATE
<u>Slane</u>				<u>Lucas</u>	<u>3 Feb. 66</u>
<u>Beck</u>				S. R. <u>27</u>	WEATHER <u>Cloud</u>
<u>Bradley</u>				SEC. _____	TEMP. <u>31°</u>
<u>Schrofer</u>					

DESCRIPTION _____ Pnts to Central Points _____ JOB NO. _____

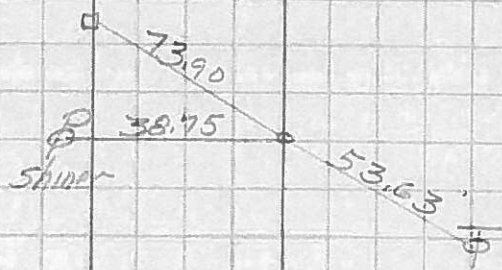
	LEFT	CENTER LINE	RIGHT	
189+1374 = P.I.		86.63'		N.E. To Shiner in P.P. (D)
21	Ed. R.R. Spt. To Surface	57.29'		S.E. To Shiner in T.P. (D)
		48.99'		S. To Iron Fence Post (D)
190+12.70 = P.O.T. (E.S.R. #295)		70.39'		N. To Iron Fence Post (D)
22	Ed. R.R. Spt. To Surface	43.92'		N.W. To Shiner in P.P. (D)
		66.93'		S.W. To Shiner in T.P. (D)
207+9589 = P.I.		44.23'		N.E. To Shiner in P.P. (D)
23	Ed. R.R. Spt. To Surface	71.39'		S.E. To Shiner in T.P. (D)
		82.36'		S. To Shiner in 30" Trac (D)
216+09.84 = P.I.		72.44'		N.E. To Shiner in P.P. (D)
24	Ed. R.R. Spt. To Surface	90.07'		N.W. To R/W Mon. (D)
		43.66'		S.E. To Shiner in T.P. (D)
		89.84'		S.W. To R/W Mon. (D)
237+3802 = P.I.		81.20'		N.E. To Shiner in P.P. (D)
25	Ed. R.R. Spt. To Surface	44.51'		S.E. To Shiner in 8" Trac (D)
		40.46'		S.S.E. To 1" I.P. 6" Above Ground (D)
		63.60'		S.W. To Shiner in T.P. (D)
258+88.70 = P.I.		69.20'		N.E. To Shiner in P.P. (D)
26	Ed. R.R. Spt. To Surface	44.18'		S.E. To Shiner in T.P. (D)
		39.77'		S.W. To Shiner in 8" Maple (D)

PERSONNEL	TITLE	PERSONNEL	TITLE
Silvester			
#			
CREW			

COUNTY Lucas DATE 1958
 S. R. #24 WEATHER _____
 SEC. He-Luc. - Waterville TEMP. _____
 (0.00)

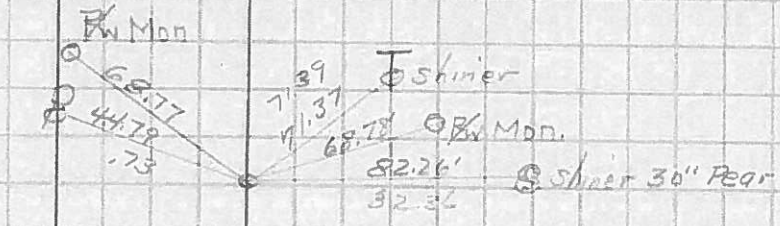
DESCRIPTION LEFT CENTER LINE RIGHT JOB NO.

P.T. 189+95.55



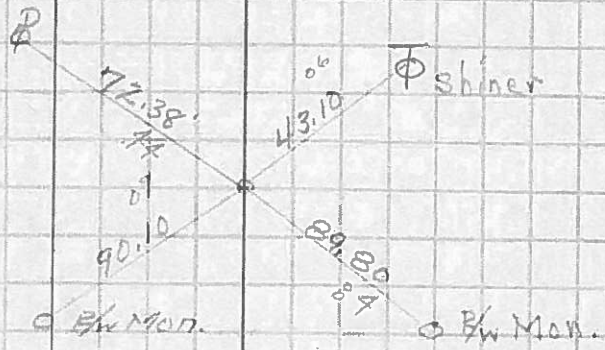
P.I. Sta. 207+45.89
R.R. spk. set

23



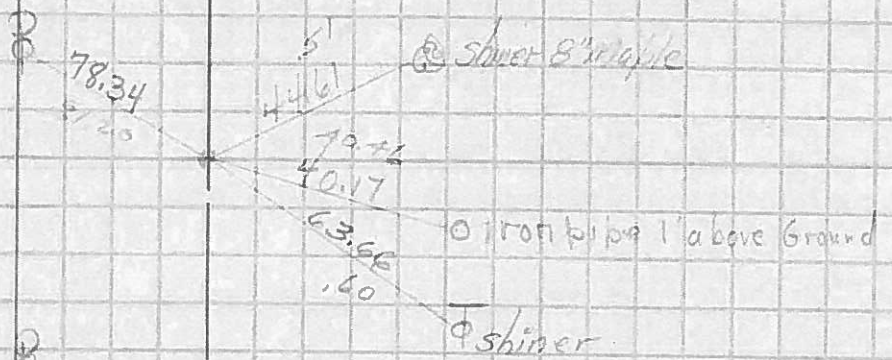
P.I. Sta. 216+09.84
R.R. spk.

24



P.I. Sta. 237+38.02
R.R. spk. set

25



P.I. Sta. 258+88.70
R.R. spk. set

26

