

O.D.O.T. DISTRICT 2 SURVEY OFFICE

PERSONNEL

REFERENCE NO. 27

SHEET 34 OF 68

NOTES S. HOSS

H.C. B. VAN DUSEN

DATE 6-5-97

ROUTE US-24

R.C. B. COLDES

WEATHER Cloud - Fair

COUNTY Lucas

C. COX

TEMP. +70°F

TOWNSHIP Providence

SECTION 26

T. 6 N. R. 9 E.

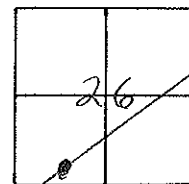
TYPE MONUMENT PK NAIL & WASHER

ON SURFACE - ~~BELOW~~ YES

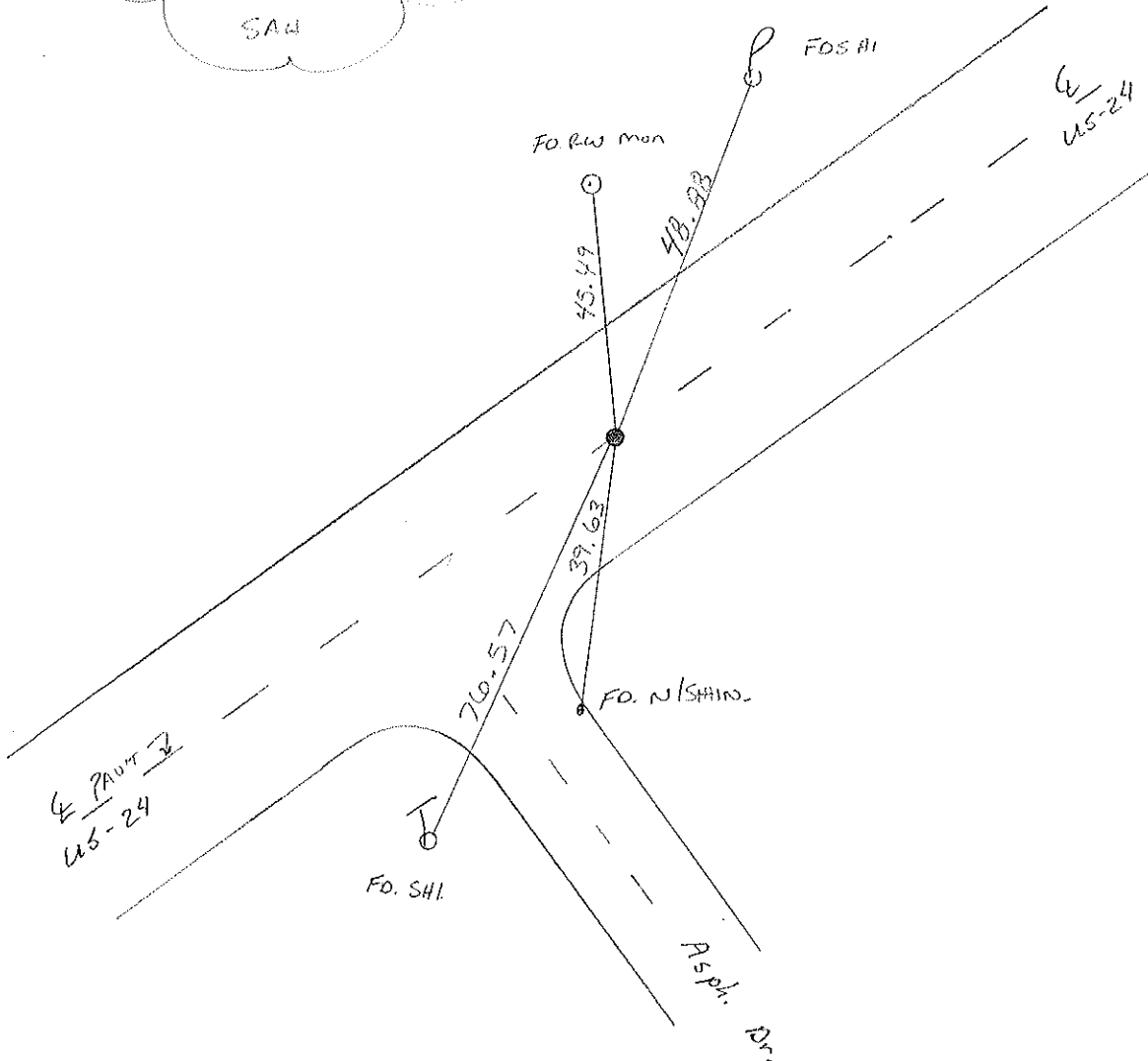
~~LEFT - & PAV'T.~~ - ~~RIGHT~~ YES

11.8 TO RT EDGE PAVEMENT

S.L.M. 266 + 46



SET PK/WASHER
 10-21-97
 SAH



O.D.O.T. DISTRICT 2 SURVEY OFFICE

PERSONNEL _____

REFERENCE NO. 27

SHEET 27 OF _____

NOTES LOEHRKE

H.C. CANTENBURY

R.C. CORTES

DATE 10-11-94

WEATHER CLEAR

TEMP. +55°

ROUTE US #24

COUNTY LUCAS

TOWNSHIP PROVIDENCE

SECTION 26

T. 6 N. R. 9 E

Set P.K. / WASHER
5-11-95
C.L.

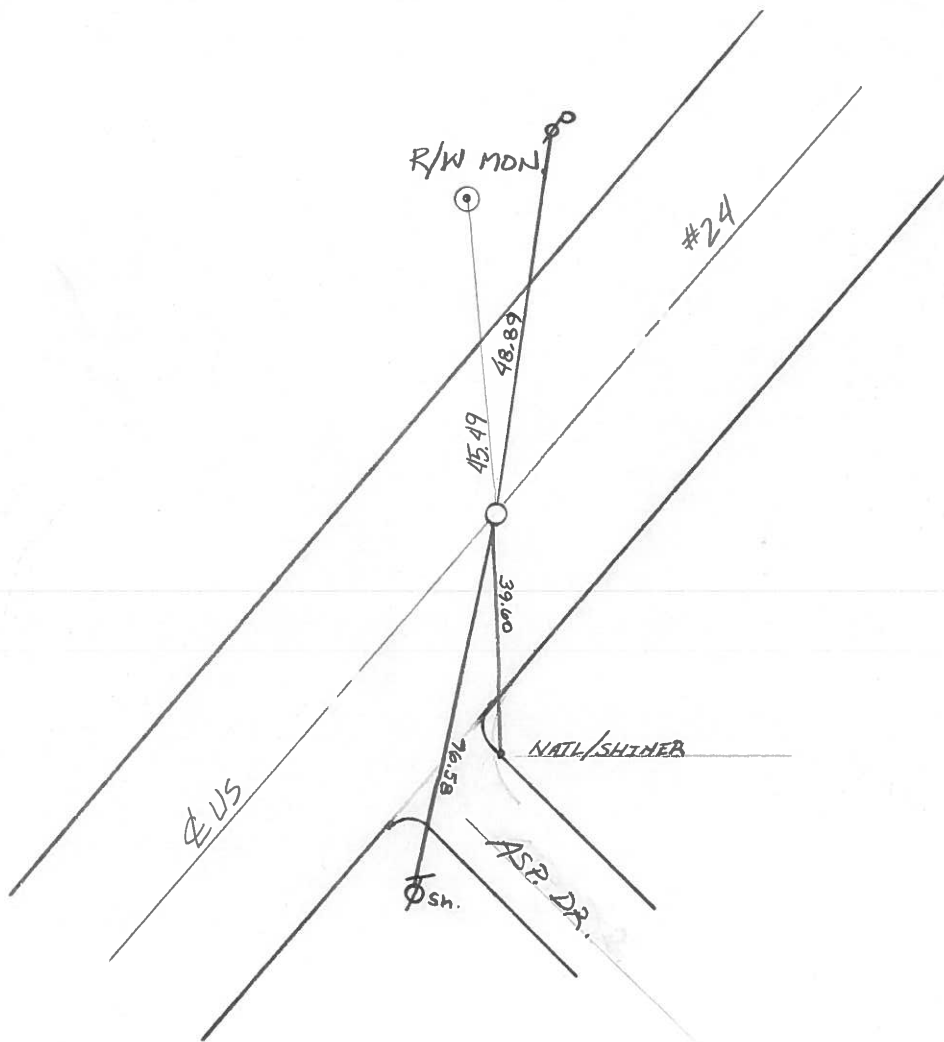
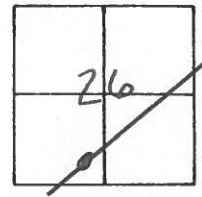
TYPE MONUMENT P.K. NAIL

ON SURFACE - BELOW SURFACE

LEFT - ☉ PAV'T. - RIGHT ☉

12.0 TO RT EDGE PAVEMENT

S.L.M. 265+79



O.D.O.T. DISTRICT 2 SURVEY OFFICE

PERSONNEL _____

REFERENCE NO. 27

SHEET 27 OF _____

NOTES 1.5 Stone

H.C. D. Curtis

R.C. J. Hauschalter

DATE 30 Aug. 89

WEATHER Clear

TEMP. 75°

ROUTE US #24

COUNTY Lucas

TOWNSHIP Providence

SECTION 26

T. _____ R. _____

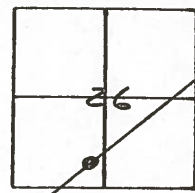
TYPE MONUMENT PK Nail

ON SURFACE - BELOW Surface

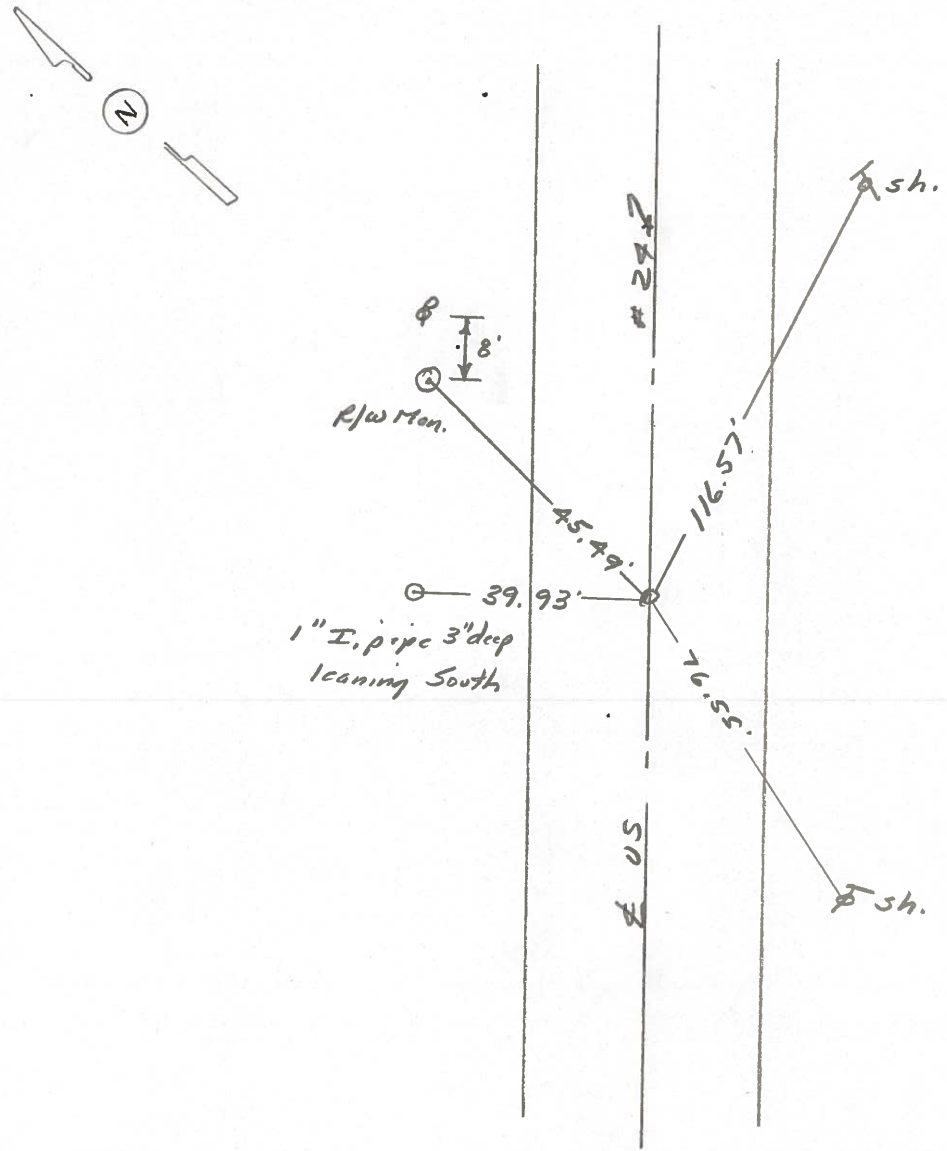
LEFT - \odot PAV'T. - RIGHT _____

_____ TO _____ EDGE PAVEMENT

S.L.M. 265+99



Set PK Nail 10/13/89 IRS



Q.D.O.T. DISTRICT 2 SURVEY OFFICE

Sht. 33 of

County Lucas S.R. US #24

Date 17 July 1980

Township Providence

Weather Windy

Section 26

Temp. 80°

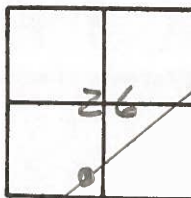
T N, R E

Personnel I. Stone

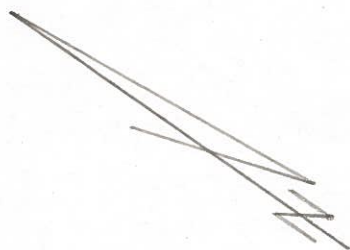
P. Neuse

D. Curtis

27



Ref. No. 4227



R/W Mon.

45.48'

US #24

67.24'

76.54'

Spk.

Spk.

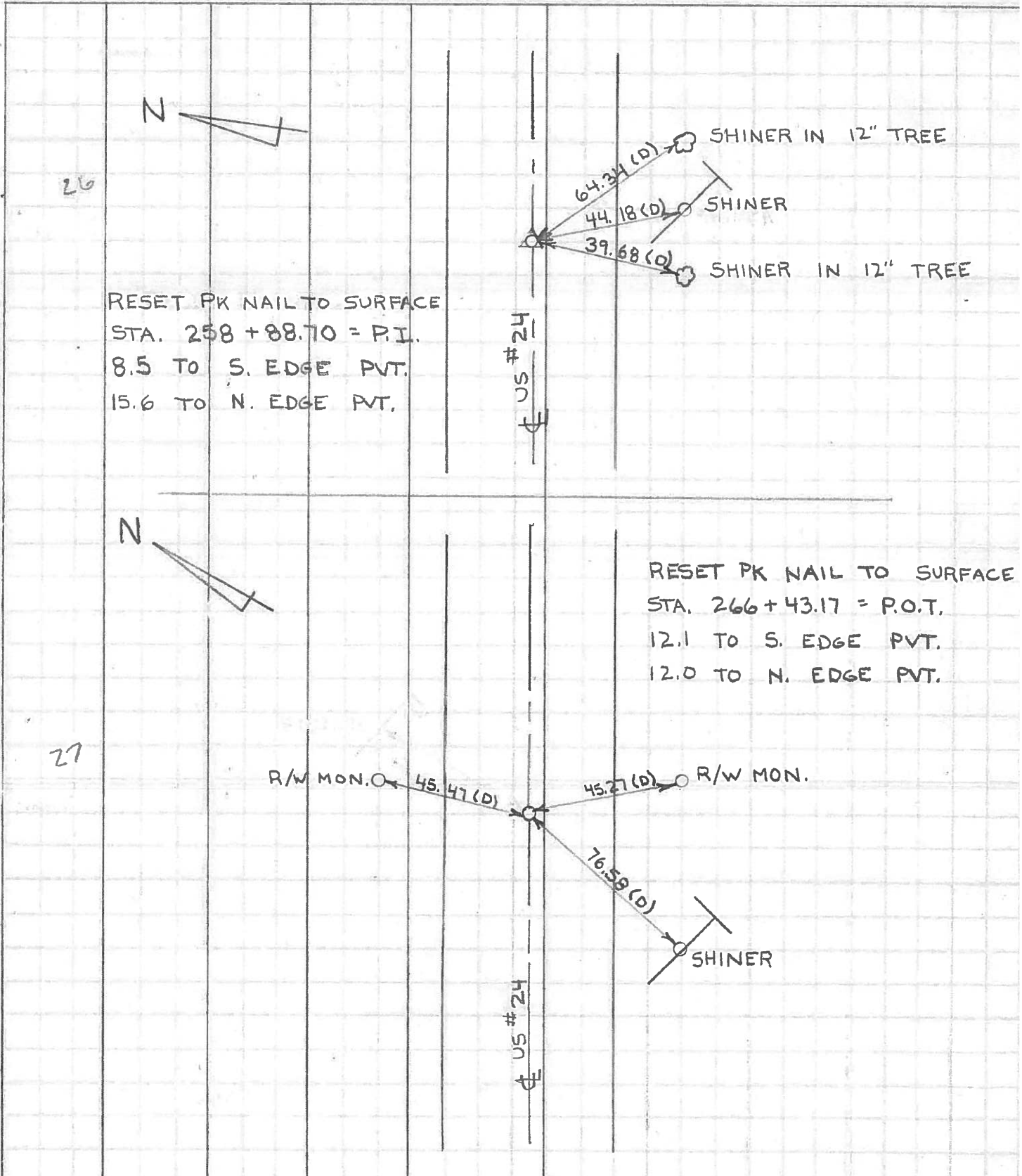
BLK TOP DR.

Shined

Fd. PK Nail To Surface
Sta. 266+43.17 = P.O.T.
12.0' to S. edge put.
11.8' to N. edge put.

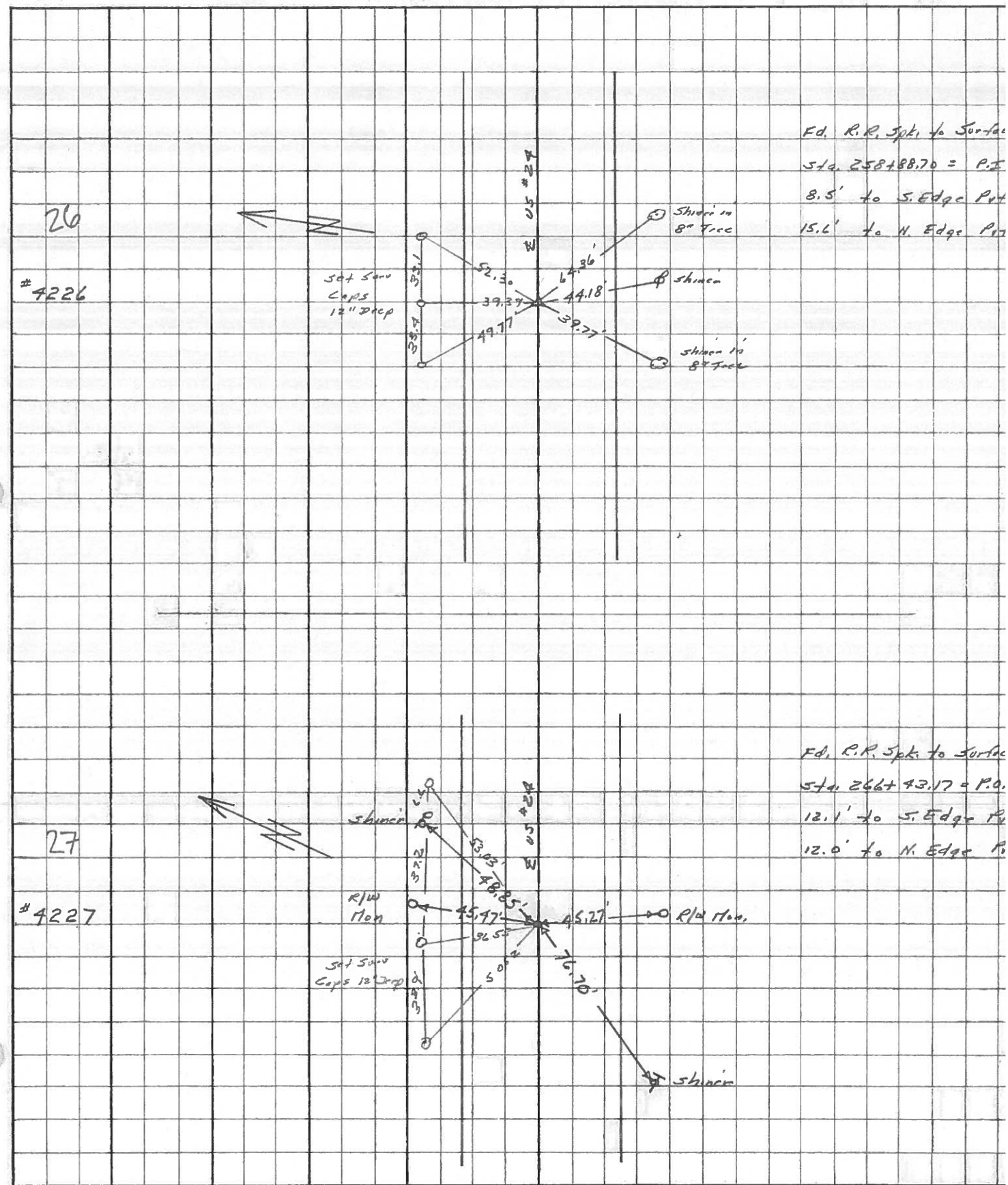
PERSONNEL	TITLE	PERSONNEL	TITLE	COUNTY	LUCAS	DATE	JULY 7, 1971
W. DENNO				S. R.	US # 24	WEATHER	SUNNY - WAI
D. CURTIS				SEC.		TEMP.	85±
D. STEVENS							
R. BRANNAN							

DESCRIPTION REFERENCES TO CONTROL POINTS
 LEFT CENTER LINE RIGHT JOB NO.



PERSONNEL	TITLE	PERSONNEL	TITLE	COUNTY	DATE
Stone	Notes			Lucas	May 68
Beck	Flag			S. R. #29	WEATHER Fair
Michalak	Tape			SEC.	TEMP.
Schroeder	Tape				

DESCRIPTION References to Control Points JOB NO.



PERSONNEL	TITLE	PERSONNEL	TITLE	COUNTY <u>Lucas</u>	DATE <u>3 Feb 68</u>
<u>Stone</u>					
<u>Boek</u>				S. R. <u>#24</u>	WEATHER <u>Cool</u>
<u>Brindley</u>					
<u>Schroeder</u>				SEC.	TEMP. <u>31°</u>
DESCRIPTION				JOB NO.	

Refs to Control Points

	LEFT	CENTER LINE	RIGHT
27	266+43.17 = P.O.T.	76.70'	S.W. To Shiner in T.P. (D)
	Fd. R.P. Spt.	45.27'	S.S.E. To R/W Mon. (D)
	To Surface	45.47'	N.N.E. To R/W Mon. (D)
		48.85'	N.E. To Shiner in P.P. (D)
28	269+87.04 = P.O.T.	80.20'	N.E. To Shiner in Sw Con. Beam (D)
	Fd. R.P. Spt.	45.38'	S.E. To Shiner in 6" Tree (D)
	To Surface	69.07'	S.W. To Shiner in T.P. (D)
		55.68'	N.W. To Shiner in P.P. (D)
29	289+72.82 = P.I.	45.16'	S.S.W. To Shiner in 78" Tree (P)
	Fd. R.P. Spt.	45.78'	S.S.E. To Shiner in T.P. (D)
	To Surface	55.95'	N.E. To Shiner in P.P. (D)
		43.49'	N.N.W. To Shiner in 6" Pine (D)
30	296+72.12 = P.O.T. (Box R1)	75.48'	N.N.E. To Shiner in T.P. (P)
	Fd. R.P. Spt.	50.82'	N.E. To Shiner in P.P. (P)
	To Surface	62.99'	N.W. To Shiner in P.P. (D)
		41.30'	S. To Shiner in T.P. (P)
31	304+38.50 = P.O.T. (Otsego Rd.)	33.92'	N.W. To Shiner in P.P. (D)
	Fd. R.P. Spt.	38.07'	S.S.E. To Con. Road Sign (D)
	To Surface	40.86'	S.S.W. To Shiner in T.P. (D)
		71.52'	S.W. To N.E. Cor. Con. Porch Slab (D)
32	308+65.95 = P.I.	53.00'	N.N.E. To Shiner in P.P. (D)
	Fd. 1/2" I.P.	49.25'	S.E. To Shiner in T.P. (D)
	To Surface (Bent Over)	66.20'	S.W. To Shiner in 8" Walnut (D)

PERSONNEL	TITLE	PERSONNEL	TITLE	COUNTY	DATE
Silvester				Lucas	1958
#				S. R. #24	WEATHER
Crew				SEC. He-Luc. - Waterville	TEMP.
				(0.00)	

