

# O.D.O.T. DISTRICT 2 SURVEY OFFICE

PERSONNEL \_\_\_\_\_ REFERENCE NO. 30 SHEET 37 OF 68

NOTES S. HUSS

H.C. B. VAN DUSEN DATE 6-5-97 ROUTE US-24

R.C. C. LOENHKE WEATHER FAIR COUNTY Lucas

C. COV TEMP. 170°F TOWNSHIP Providence

SECTION 26

T. 6 N. 9 E.

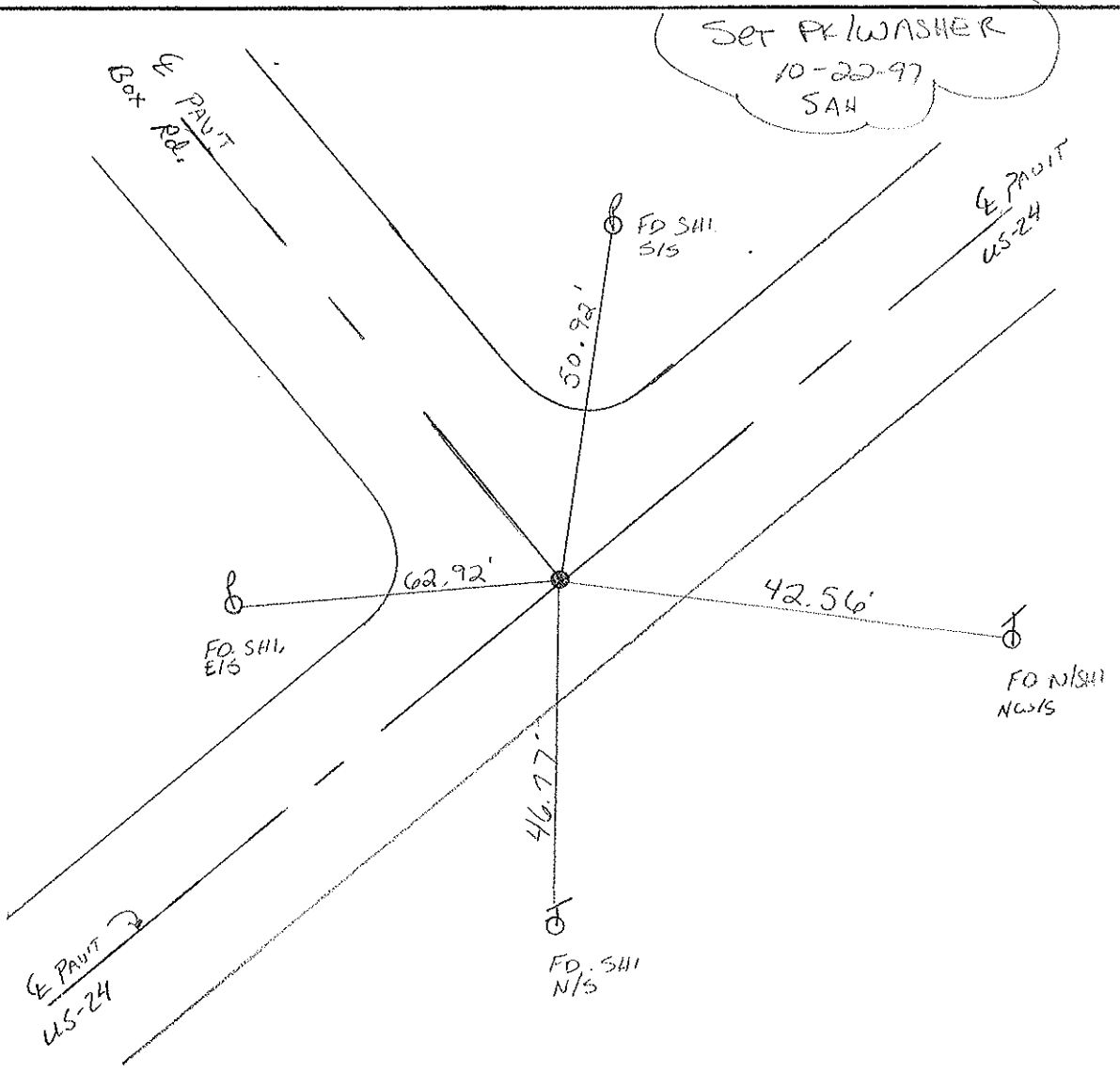
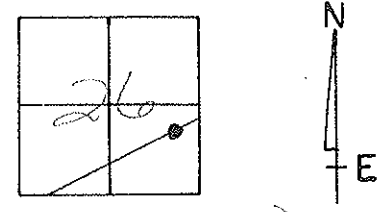
TYPE MONUMENT PK WASHER

ON SURFACE - ~~BELOW~~ ON SURFACE

~~LEFT - 0~~ PAV'T. - RIGHT 0.7 RT

10.9 TO RT EDGE PAVEMENT

S.L.M. 296 + 04



O.D.O.T. DISTRICT 2 SURVEY OFFICE

PERSONNEL

REFERENCE NO. 30

SHEET 36 OF     

NOTES LOHRKE

~~H.G.~~ Q Head CANTENBURY

DATE 10-11-94

ROUTE US #24

~~R.G.~~ Q Rec CORTES

WEATHER CLEAR

COUNTY LUCAS

M BARNHISEL

TEMP. +58°

TOWNSHIP Providence

M SLOVAK

Set P.K. / WASHER  
5-11-95

SECTION 26

T. 6 N. 9 E.

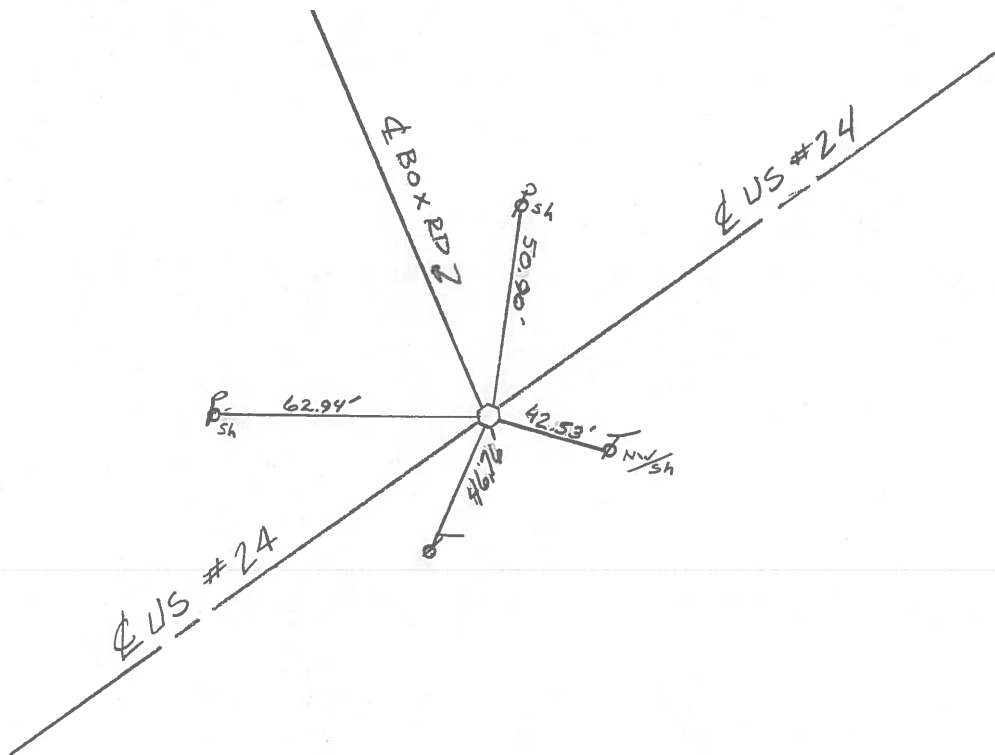
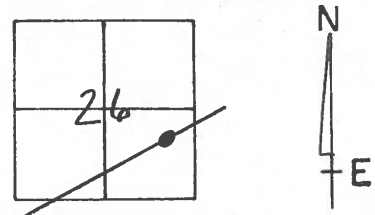
TYPE MONUMENT PIK NAIL

ON SURFACE - BELOW SURFACE

LEFT - CL PAV'T. - RIGHT 1.4' RT CL

10.6 TO RT EDGE PAVEMENT

S.L.M. 296404



Q.D.O.T. DISTRICT 2 SURVEY OFFICE

Sht. 36 of

County Lucas S.R. 05 #24

Date OK-9-14-80 G.W.S.  
17 July 1980

Township Providence

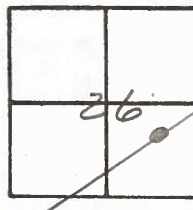
Weather Woods

Section 26

Temp. 80°

T\_N, R\_E

Personnel I. Stone

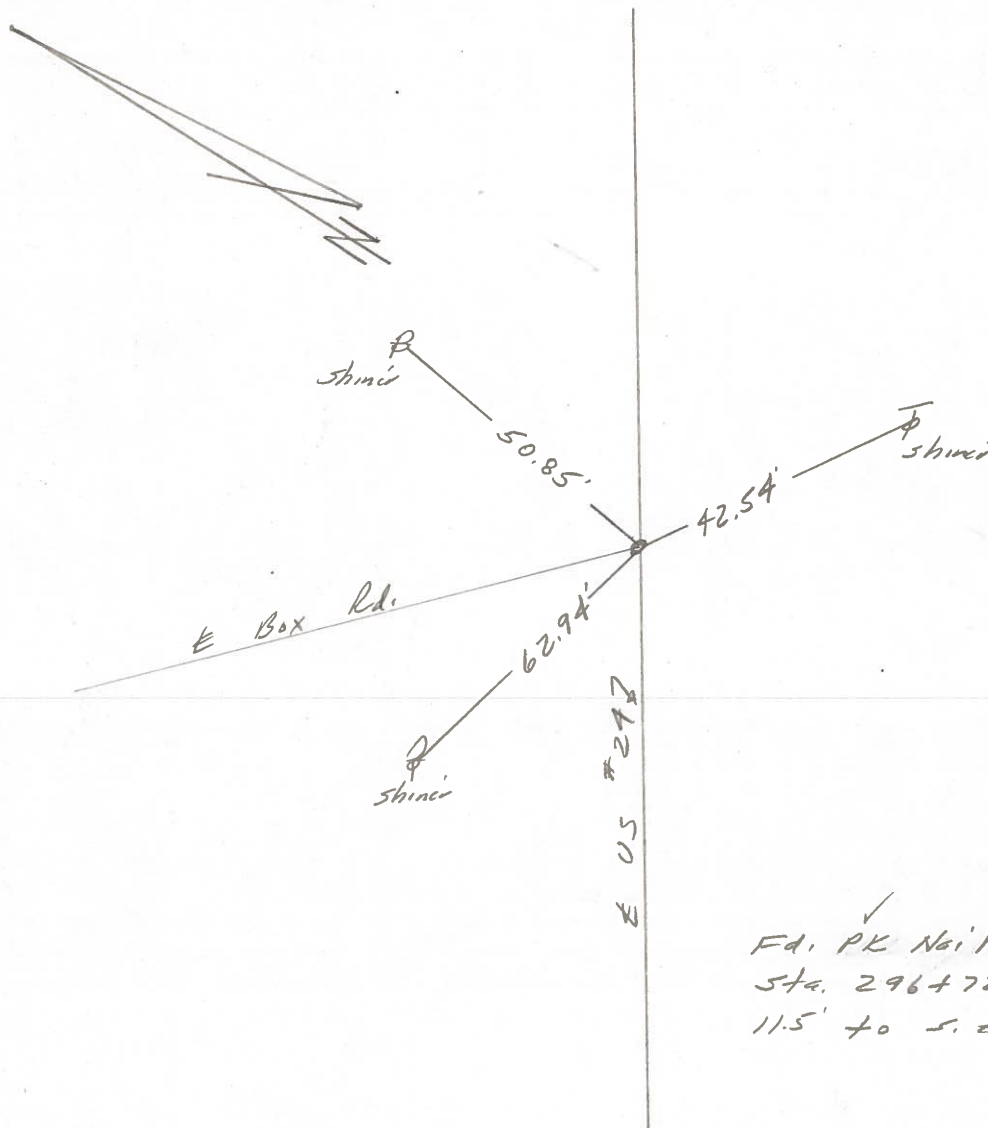


30

P. Neuse

D. Curtis

Ref. No. 4230

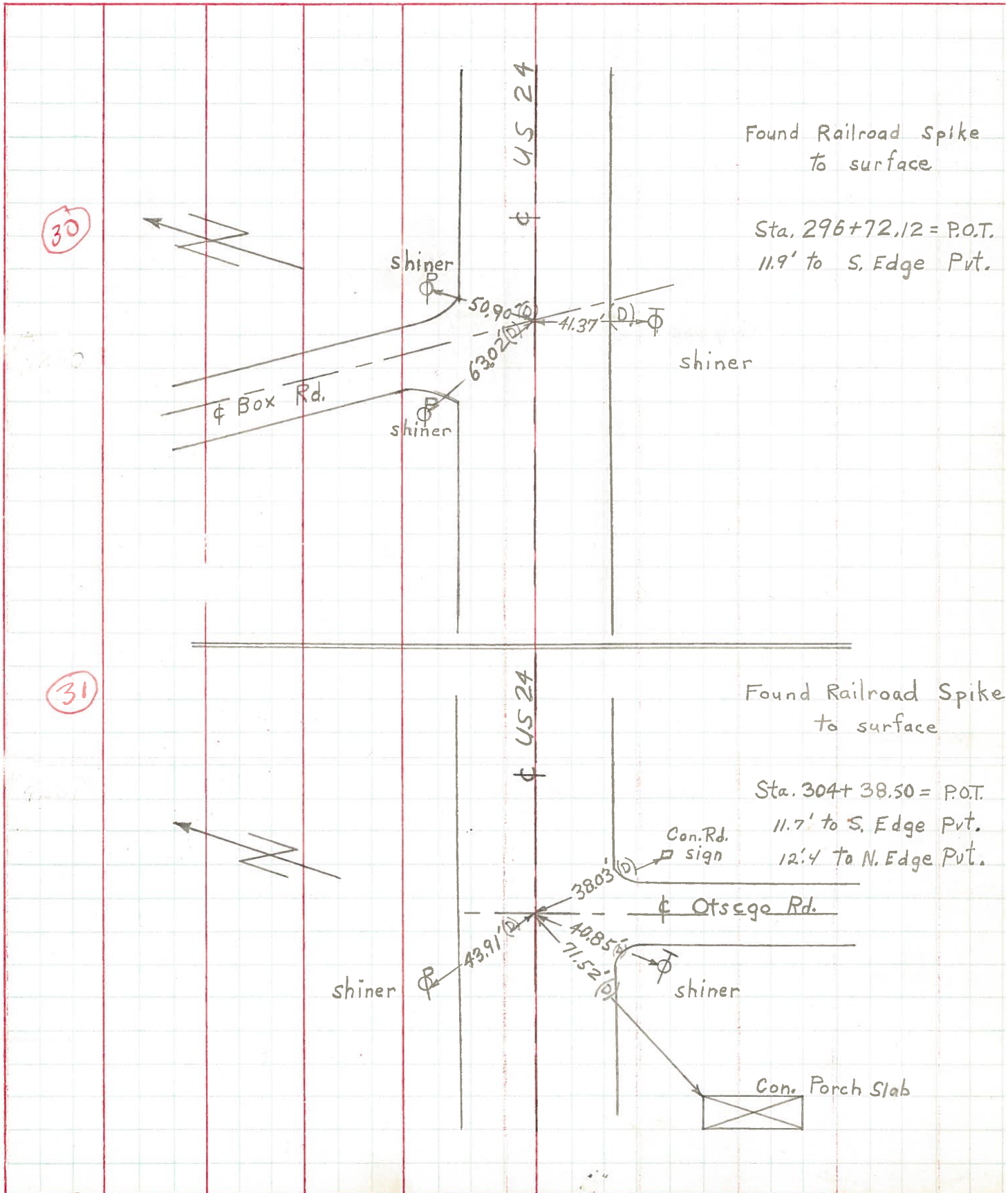


Ed. PK Nail To Surface  
Sta. 296+72.12 = P.O.T.  
11.5' to s. edge put.

PERSONNEL	TITLE	PERSONNEL	TITLE
W. Denno			
D. Curtis			
R. Engel			

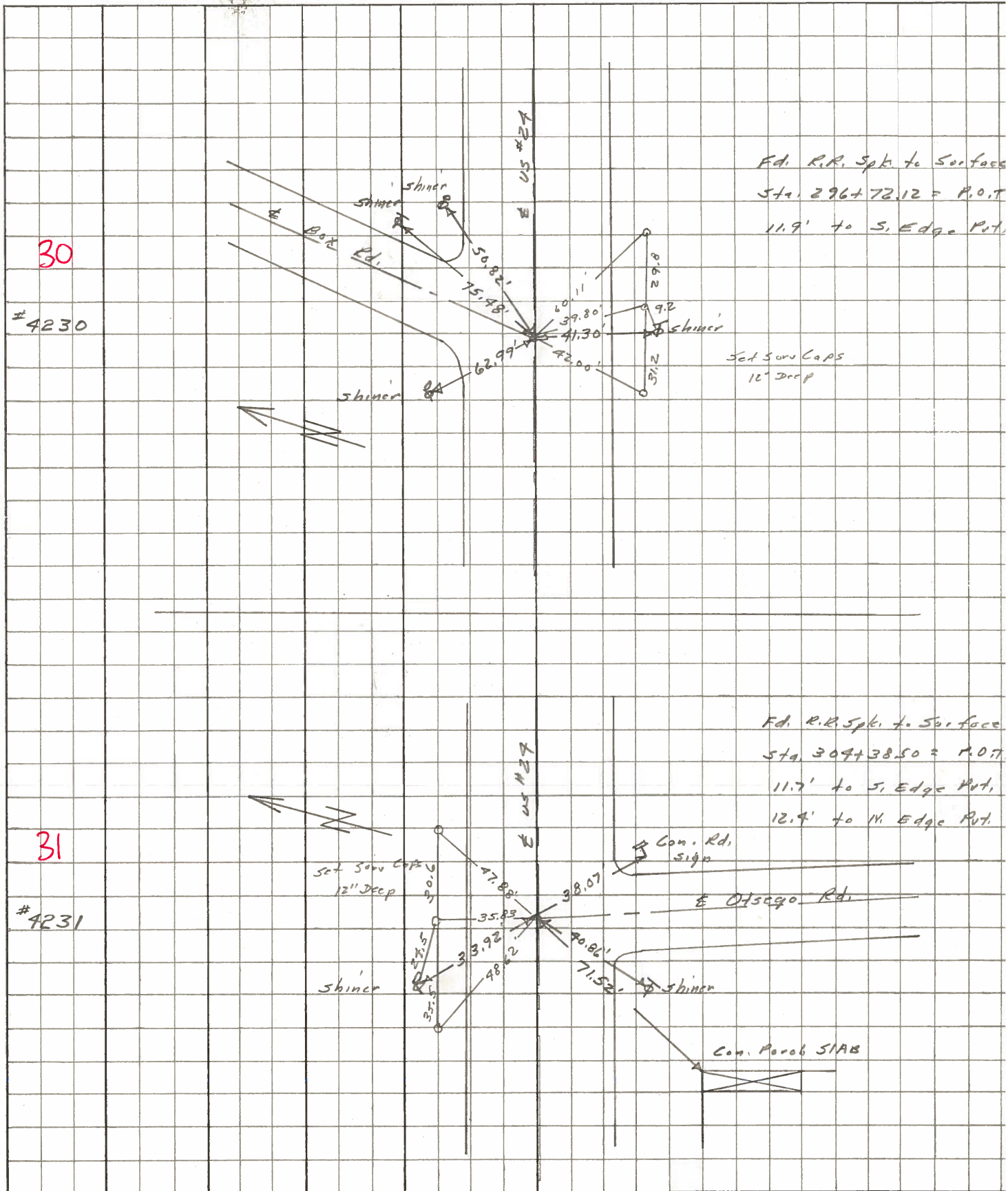
COUNTY Lucas DATE April 29, 1971  
 S. R. US # 24 WEATHER Mild  
 SEC. \_\_\_\_\_ TEMP. 45°

DESCRIPTION References to Control Points JOB NO. \_\_\_\_\_



PERSONNEL	TITLE	PERSONNEL	TITLE	COUNTY	DATE
Stone	Notes			Lucas	May 68
Beck	Flag			# 29	WEATHER Fair
Michalak	Tape			SEC.	TEMP.
Schroder	Tape				

DESCRIPTION References to Central Points JOB NO.





PERSONNEL TITLE PERSONNEL TITLE COUNTY Lucas DATE 19 Feb 16  
 Stone \_\_\_\_\_  
 Becke \_\_\_\_\_  
 Brindley \_\_\_\_\_  
 Schroeder \_\_\_\_\_  
 S. R. #27 WEATHER Cool  
 SEC. \_\_\_\_\_ TEMP. 51°

DESCRIPTION Refs to Control Points JOB NO.  
 LEFT CENTER LINE RIGHT

266+43.17 = P.O.T.		76.70'	S.W. To Shiner in T.P.	(D)
	Fd. R.P. Spt.	45.27'	S.S.E. To R/W Mon.	(D)
27	To Surface	45.47'	N.N.E. To R/W Mon.	(D)
		48.85'	N.E. To Shiner in P.P.	(D)
269+87.04 = P.O.T.		80.20'	N.E. To Shiner in SW. Cor. Bump	(D)
	Fd. R.P. Spt.	45.38'	S.E. To Shiner in 6" Turn	(D)
28	To Surface	69.07'	S.W. To Shiner in T.P.	(D)
		55.68'	N.W. To Shiner in P.P.	(D)
289+72.82 = P.I.		45.16'	S.S.W. To Shiner in 78" Turn	(P)
	Fd. R.P. Spt.	45.78'	S.S.E. To Shiner in T.P.	(D)
29	To Surface	55.95'	N.E. To Shiner in P.P.	(D)
		43.49'	N.N.W. To Shiner in 6" Pave	(D)
296+72.12 = P.O.T. (Box Rd.)		75.48'	N.N.E. To Shiner in T.P.	(P)
	Fd. R.P. Spt.	50.82'	N.E. To Shiner in P.P.	(P)
30	To Surface	62.99'	N.W. To Shiner in P.P.	(D)
		41.30'	S. To Shiner in T.P.	(P)
304+38.50 = P.O.T. (Otsego Rd.)		33.92'	N.W. To Shiner in P.P.	(D)
	Fd. R.P. Spt.	38.07'	S.S.E. To Con. Road Sign	(D)
31	To Surface	40.86'	S.S.W. To Shiner in T.P.	(D)
		71.52'	S.W. To N.E. Cur. Con. Patch Sub	(D)
308+65.95 = P.I.		53.00'	N.N.E. To Shiner in P.P.	(D)
	Fd. 1/2" I.P.	49.25'	S.E. To Shiner in T.P.	(D)
32	To Surface (Bent Over)	66.20'	S.W. To Shiner in 8" Walnut	(D)

PERSONNEL	TITLE	PERSONNEL	TITLE	COUNTY	DATE	WEATHER	TEMP.
Silvester				Lucas	1958		
Crow				#24			
				He-Luc. - Waterville			
				(0.00)			

DESCRIPTION	LEFT	CENTER LINE	RIGHT	JOB NO.
✓ P.O.T. Sta. 266+43.17 R.R. Spk. Set 76.71 27		Pin Man 45.50 67.65 75.45 Brick Edn. Barn 2' above Ground		
✓ P.O.T. Sta. 269+87.04 R.R. Spk. Set 28	Shiner Cor. Barn	89.17 45.50 69.05 Shiner 6" Maple Shiner		
✓ P.I. Sta. 289+92.82 R.R. Spk. Set 29	Shiner Roofing tack 54 Pipe	55.87 43.76 44.81 45.60 Shiner Shiner 36" Tree		
✓ P.O.T. Sta. 296+72.12 R.R. Spk. Set. (Box Rd) 30		75.50 62.93 41.30 Shiner		
✓ P.O.T. Sta. 304+38.50 R.R. Spk. Set. (Otsego Rd) 31		43.51 37.93 40.90 71.49 Conc. Rd. Sign Post Shiner		