

# O.D.O.T. DISTRICT 2 SURVEY OFFICE

PERSONNEL

REFERENCE NO. 31

SHEET 38 OF 68

NOTES HUSS

H.C. VAUGHAN

DATE 6-5-97

ROUTE U.S. 24

R.C. LOERKE

WEATHER FAIR

COUNTY LUCAS

C. COX

TEMP. +70°F

TOWNSHIP PROVIDENCE

SECTION 26

T 6 N R 9 E

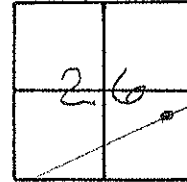
TYPE MONUMENT PK NAIL & WASHER

ON SURFACE - BELOW YES

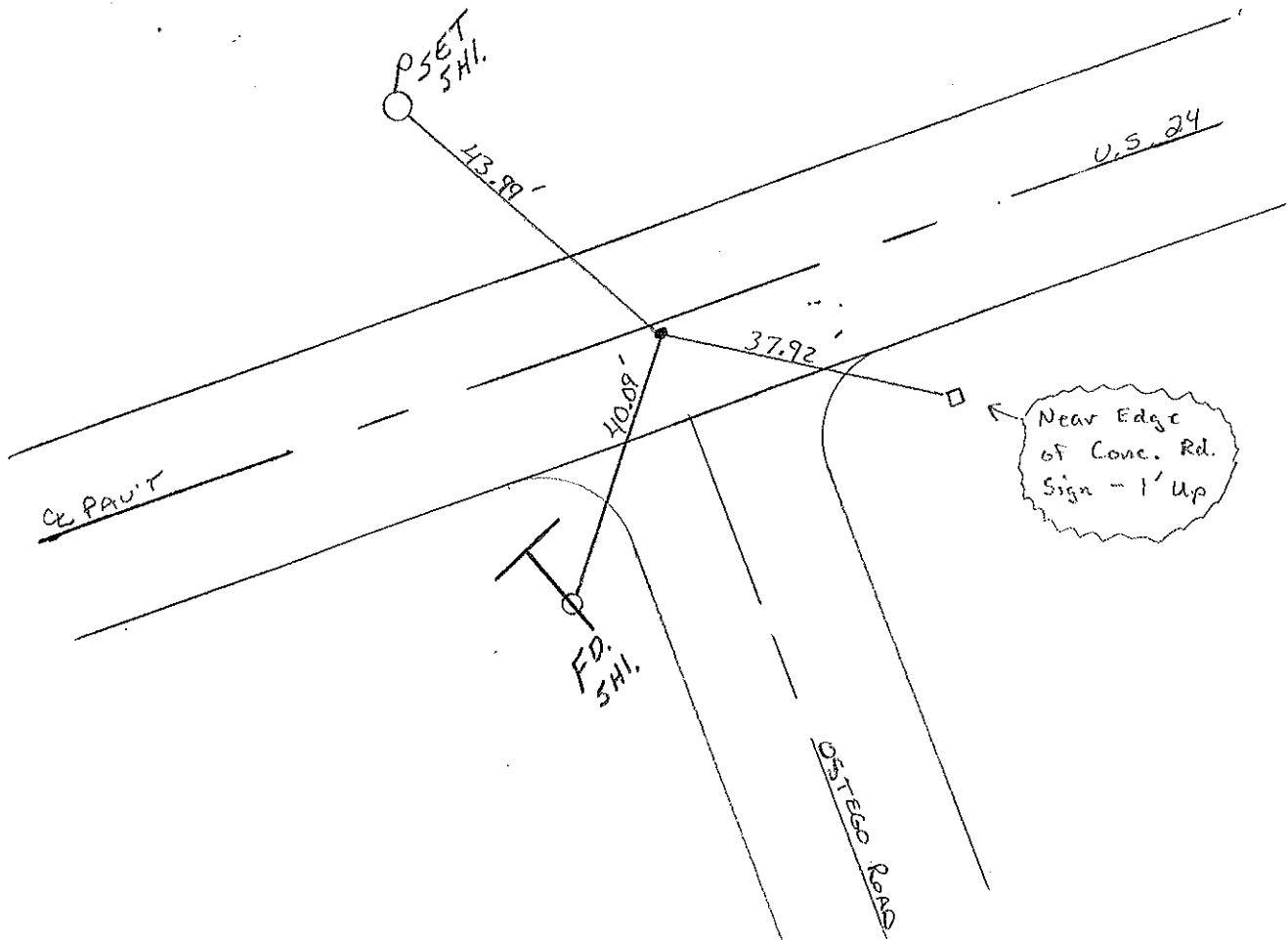
LEFT - CL PAV'T. - RIGHT 1.2'

11.3 TO R.T. EDGE PAVEMENT

S.L.M. 303 + 76



Set PK/W  
10-22-97  
SAH



Q.D.O.T. DISTRICT 2 SURVEY OFFICE

Sht. 37 of

County Lucas ~~S.R. 05#24~~

Township Providence

Section 26

T N, R E

Personnel I. Stone

P. Newson

D. Curtis

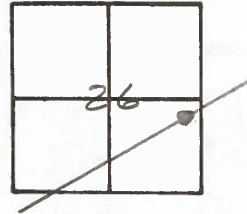
31

OK-9-4-80 G.W.S.

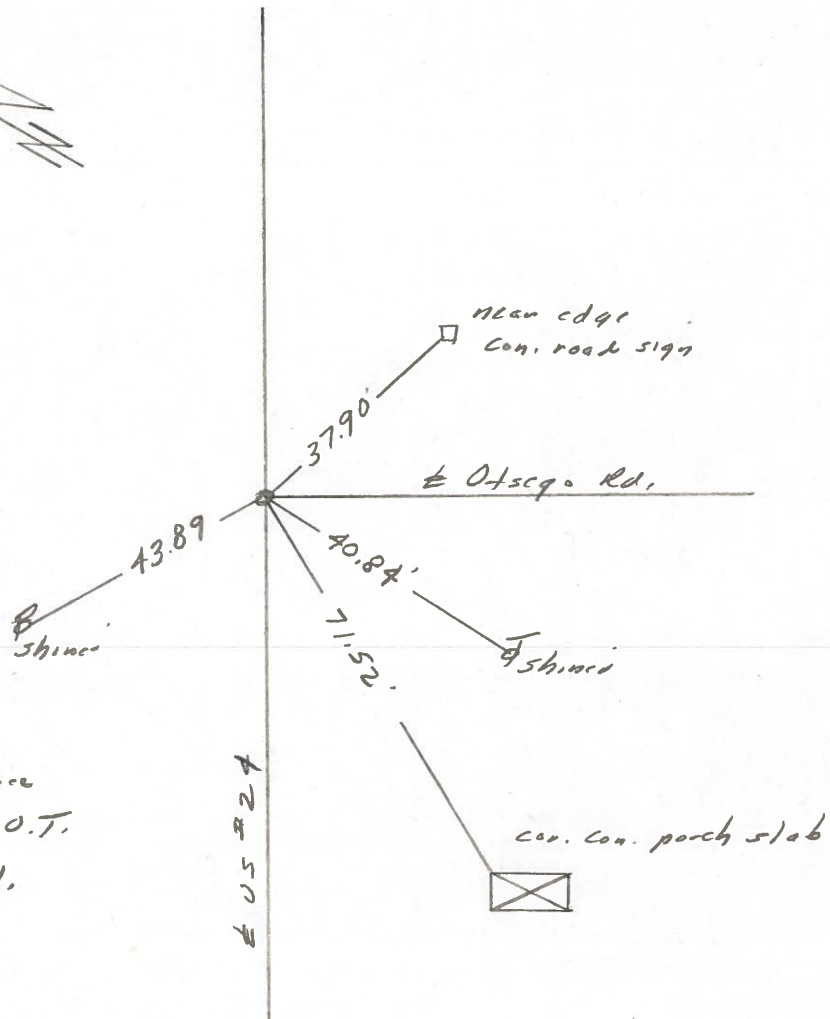
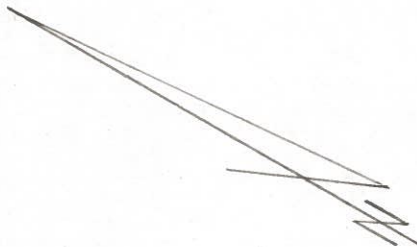
Date 17 July 1980

Weather Windy

Temp. 80°



Ref. No. 4231



Fd. PK Nail to Surface  
Sta. 304498.50 = P.O.T.  
12.4' to N. edge put.

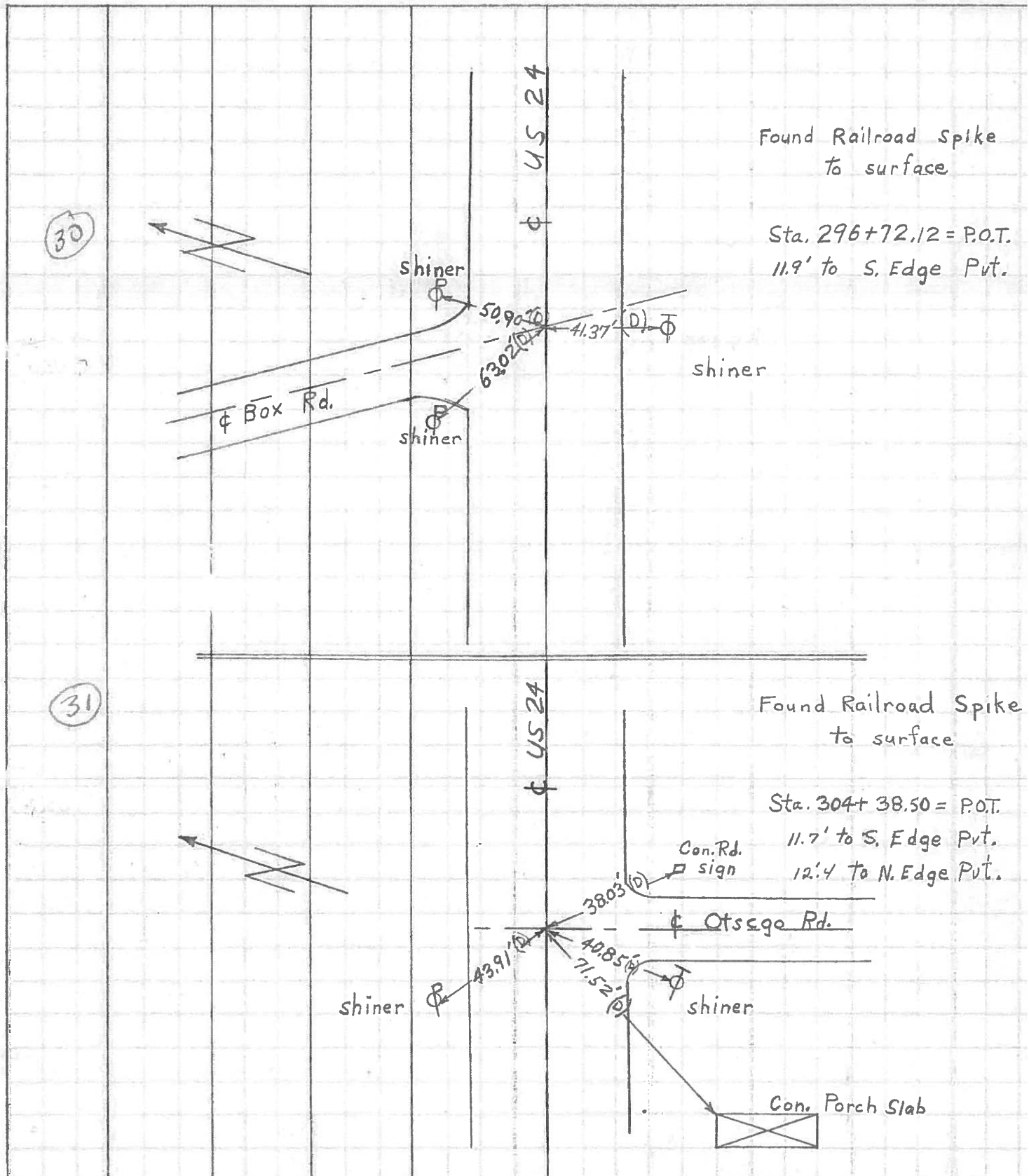
PERSONNEL	TITLE	PERSONNEL	TITLE
<u>W. Denno</u>			
<u>D. Curtis</u>			
<u>R. Engel</u>			

COUNTY Lucas DATE April 29, 1971

S. R. US # 24 WEATHER Mild

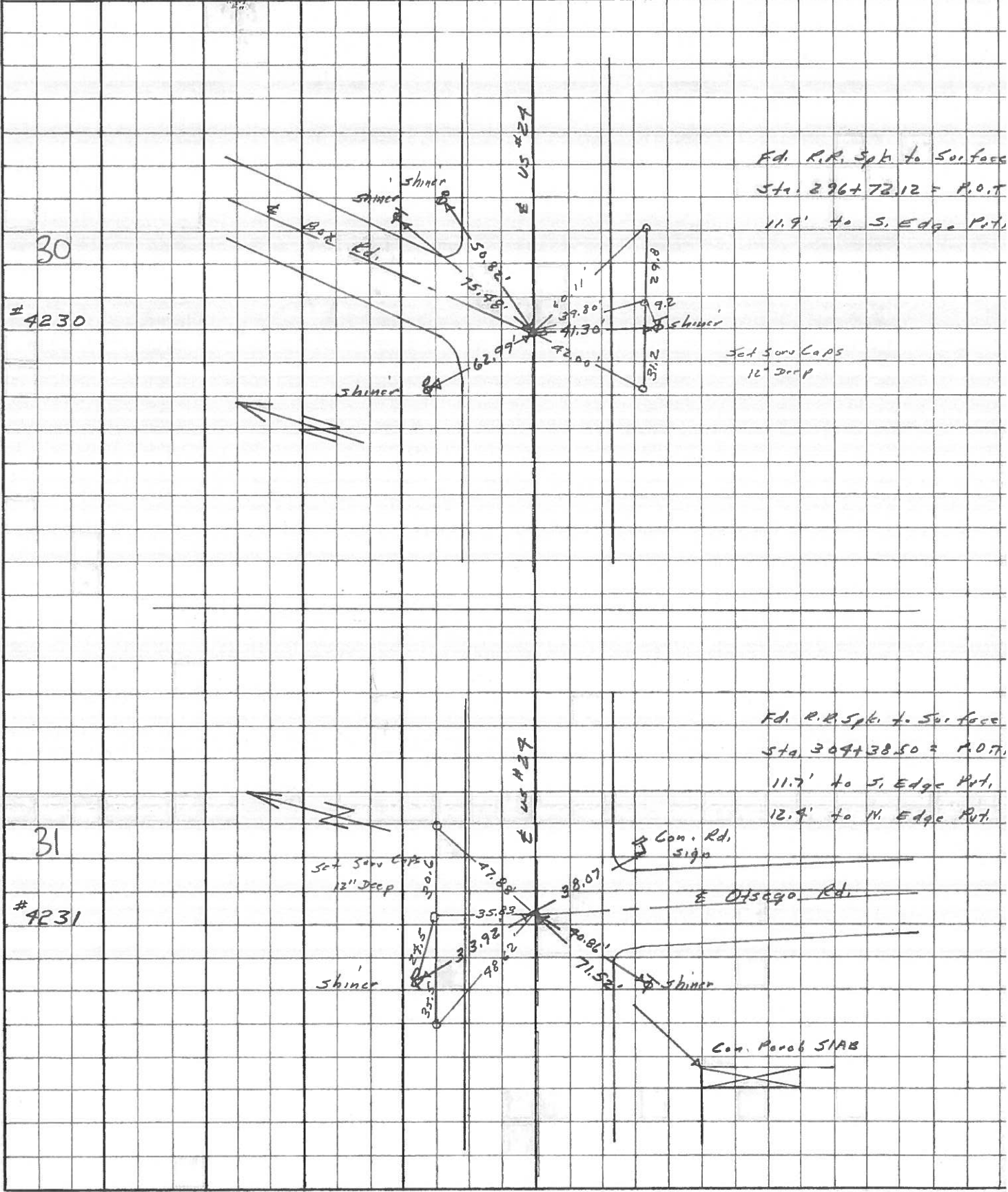
SEC. \_\_\_\_\_ TEMP. 45°

DESCRIPTION References to Control Points JOB NO. \_\_\_\_\_



PERSONNEL	TITLE	PERSONNEL	TITLE	COUNTY	DATE	WEATHER	TEMP.
Stanc	Notes			Lucas	May 68	Fair	
Beck	Flag			# 27			
Michalak	Tape						
Schroder	Tape						

DESCRIPTION References to Control Points JOB NO. \_\_\_\_\_



PERSONNEL TITLE PERSONNEL TITLE COUNTY Lucas DATE 3 Feb 11  
 Stone \_\_\_\_\_  
 Brock \_\_\_\_\_  
 Brindley \_\_\_\_\_  
 Schroeder \_\_\_\_\_  
 S. R. #29 WEATHER Cool  
 SEC. \_\_\_\_\_ TEMP. 31°

DESCRIPTION Pnts to Control Points JOB NO. \_\_\_\_\_  
 LEFT CENTER LINE RIGHT

266+43.17 = P.O.T.		76.70'	S.W. To Shiner in T.P.	(2)
Ed. R.R. Spt.		45.27'	S.S.E. To R/W Mon.	(2)
27 To Surface		45.47'	N.N.E. To R/W Mon.	(2)
		48.85'	N.E. To Shiner in P.P.	(2)
269+87.04 = P.O.T.		80.20'	N.E. To Shiner in SW. Corn. Curve	(2)
Ed. R.R. Spt.		45.38'	S.E. To Shiner in 8" Tree	(2)
28 To Surface		69.07'	S.W. To Shiner in T.P.	(2)
		55.68'	N.W. To Shiner in P.P.	(2)
289+72.82 = P.I.		45.16'	S.S.W. To Shiner in 78" Tree	(2)
Ed. R.R. Spt.		45.78'	S.S.E. To Shiner in T.P.	(2)
29 To Surface		55.95'	N.E. To Shiner in P.P.	(2)
		43.49'	N.N.W. To Shiner in 6" Pine	(2)
296+72.12 = P.O.T. (Box R1)		75.48'	N.N.E. To Shiner in T.P.	(2)
Ed. R.R. Spt.		50.82'	N.E. To Shiner in P.P.	(2)
30 To Surface		62.99'	N.W. To Shiner in P.P.	(2)
		41.30'	S To Shiner in T.P.	(2)
304+38.50 = P.O.T. (Otsaga Rd.)		33.92'	N.W. To Shiner in P.P.	(2)
Ed. R.R. Spt.		38.07'	S.S.E. To Corn. Road Sign	(2)
31 To Surface		40.86'	S.S.W. To Shiner in T.P.	(2)
		71.52'	S.W. To N.E. Corn. Corn. Patch 5th	(2)
308+65.95 = P.I.		53.00'	N.N.E. To Shiner in P.P.	(2)
Ed. 1/2" I.P.		49.25'	S.E. To Shiner in T.P.	(2)
32 To Surface (Bent Over)		66.20'	S.W. To Shiner in 8" Walnut	(2)

PERSONNEL	TITLE	PERSONNEL	TITLE	COUNTY	DATE
Silvester				Lucas	1958
Crew				S. R. #24	WEATHER
				SEC. He-Luc. - Waterville	TEMP.
				(0.00)	

DESCRIPTION	LEFT	CENTER LINE	RIGHT	JOB NO.
✓ P.O.T. Sta. 266+43.17 R.R. Spk. set				
76.71 27				
✓ P.O.T. Sta. 269+87.04 R.R. Spk. set				
78				
✓ P.I. Sta. 289+92.82 R.R. Spk. set				
29				
✓ P.O.T. Sta. 296+72.12 R.R. Spk. set. (Box Rd)				
30				
✓ P.O.T. Sta. 304+38.50 R.R. Spk. set. (Otsego Rd)				
31				