

O.D.O.T. DISTRICT 2 SURVEY OFFICE

PERSONNEL _____

REFERENCE NO. 32

SHEET 39 OF 68

NOTES HUSS

H.C. VAN DOSEN

DATE 6-5-97

ROUTE U.S. 24

R.C. LOEARLE

WEATHER FAIR

COUNTY LUCAS

A C. COX

TEMP. _____

TOWNSHIP PROVIDENCE

SECTION 26

T6 N R 9 E

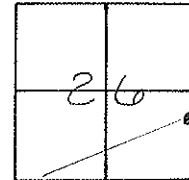
TYPE MONUMENT PK WASHER

ON SURFACE - ~~BELOW~~ ON

LEFT - ~~0~~ PAV'T. - RIGHT 17.4'

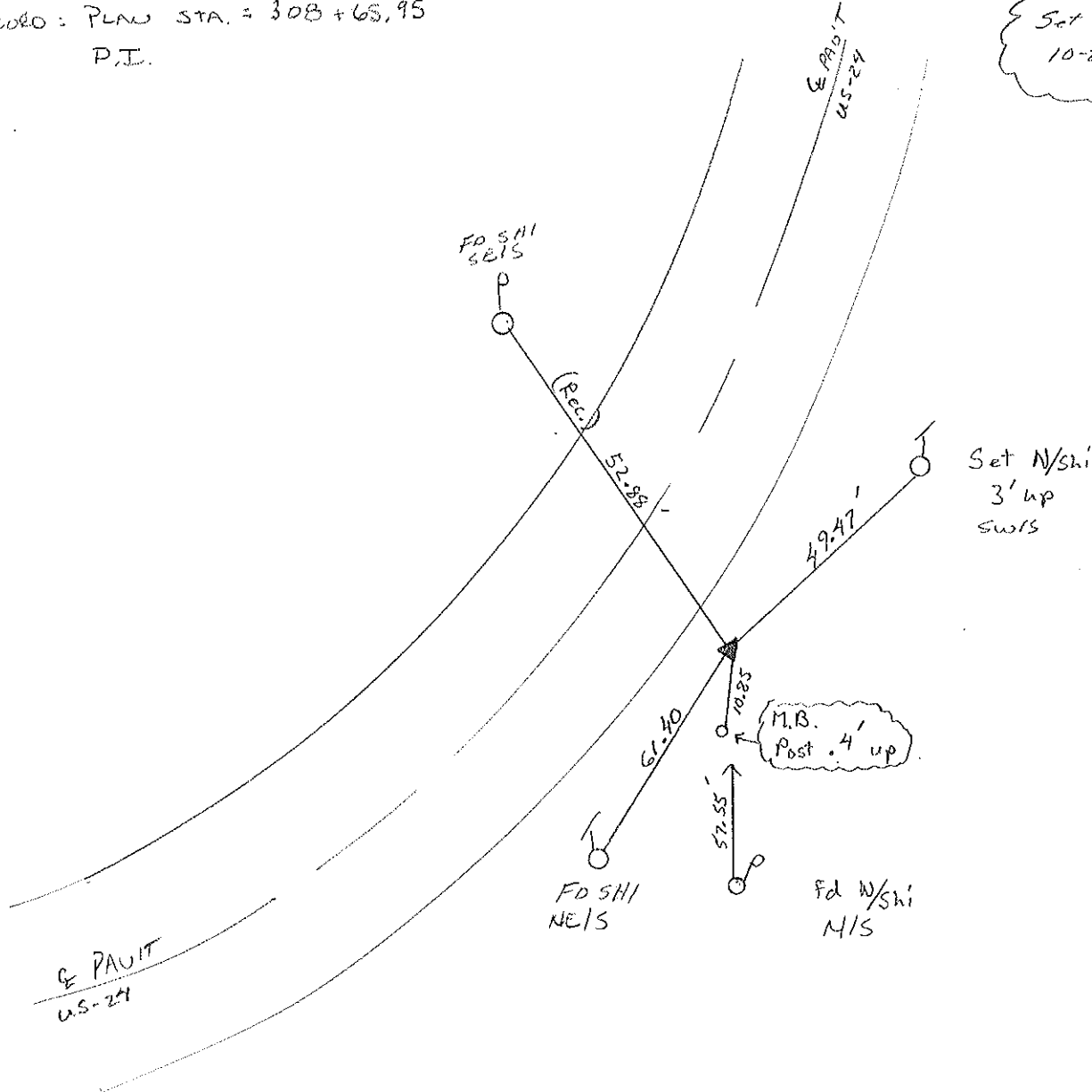
4.8 TO RT. OF RT. EDGE PAVEMENT

S.L.M. 308+05



RECORD: PLAN STA. = 308+65.95
P.I.

Set PK/W
10-22-97
SMH



Q.D.O.T. DISTRICT 2 SURVEY OFFICE

Sht. 38 of

County Lucas S.R. 05 #24

Date OK-9-4-80 G.W.S. 17 July 1980

Township Providence

Weather Warm

Section 26

Temp. 80°

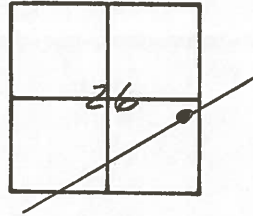
T N, R E

Personnel 1. Stone

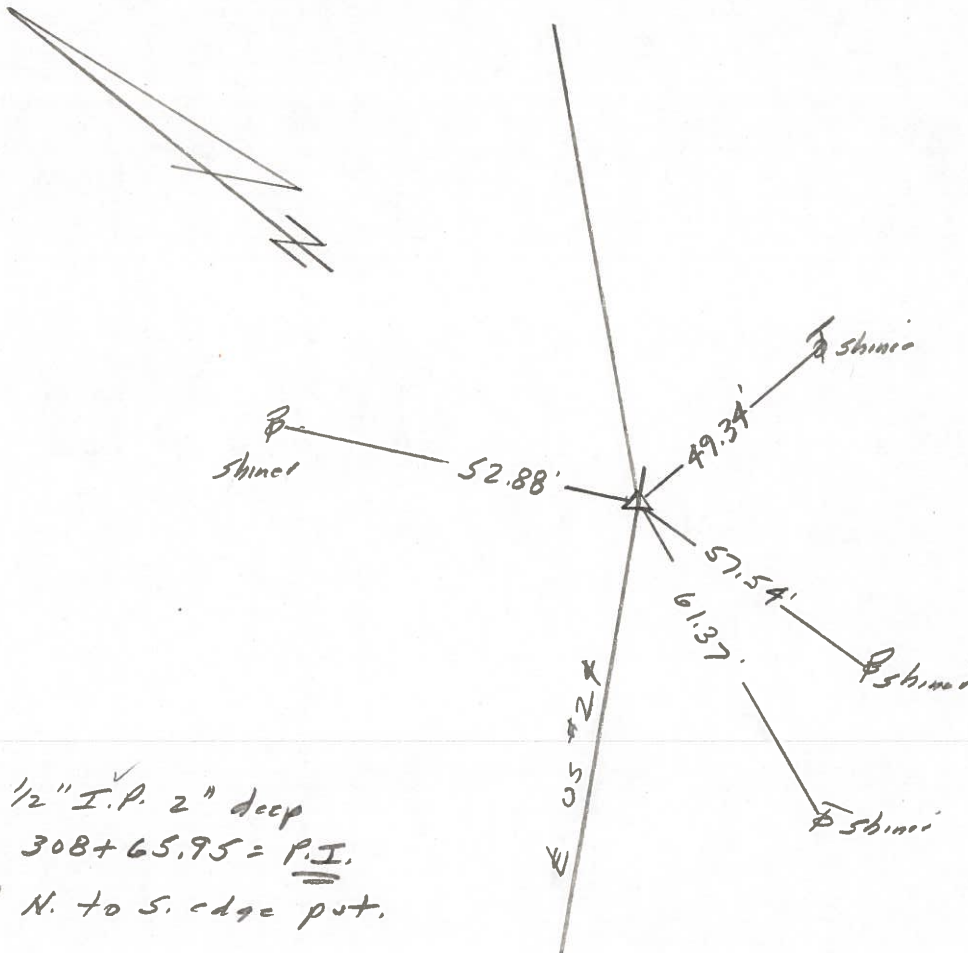
P. Neuse

D. Coatic

32



Ref. No. 4232



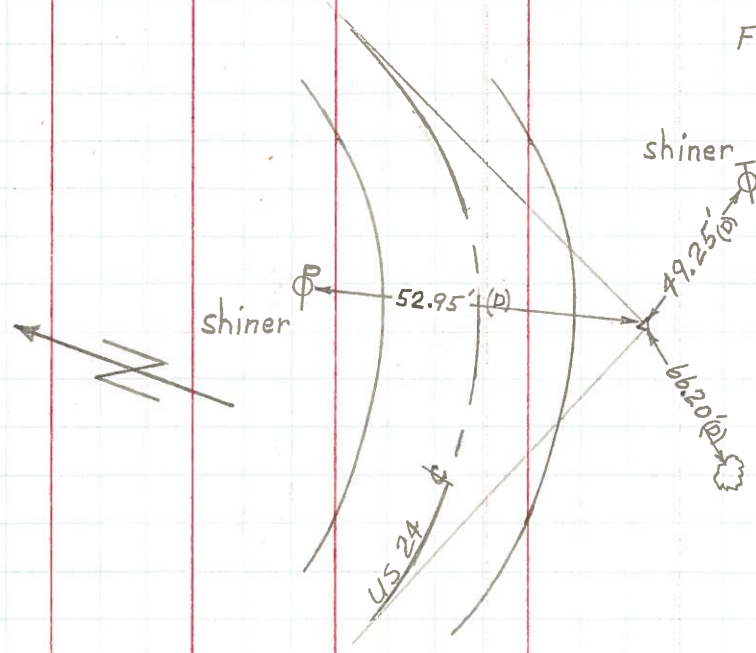
Ed. 1/2" I.P. 2" deep
Sta. 308+65.95 = P.I.
4.5' N. to S. edge put.

PERSONNEL	TITLE	PERSONNEL	TITLE
W Denno			
D Curtis			
R Engel			

COUNTY Lucas DATE April 29, 1971
 S. R. US# 24 WEATHER Mild
 SEC. TEMP. 45°

DESCRIPTION References to Control Points LEFT CENTER LINE RIGHT JOB NO.

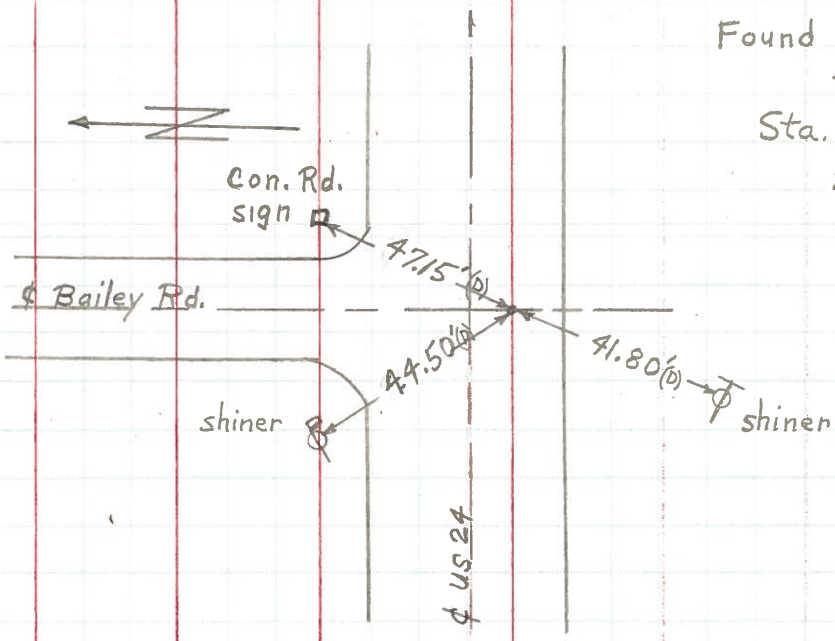
32



Found 1/2" Iron Pipe to Surface
 Sta. 308+65.95 = P.I.
 4.4' S. of S. Edge Pvt.

shiner in 8" walnut

33

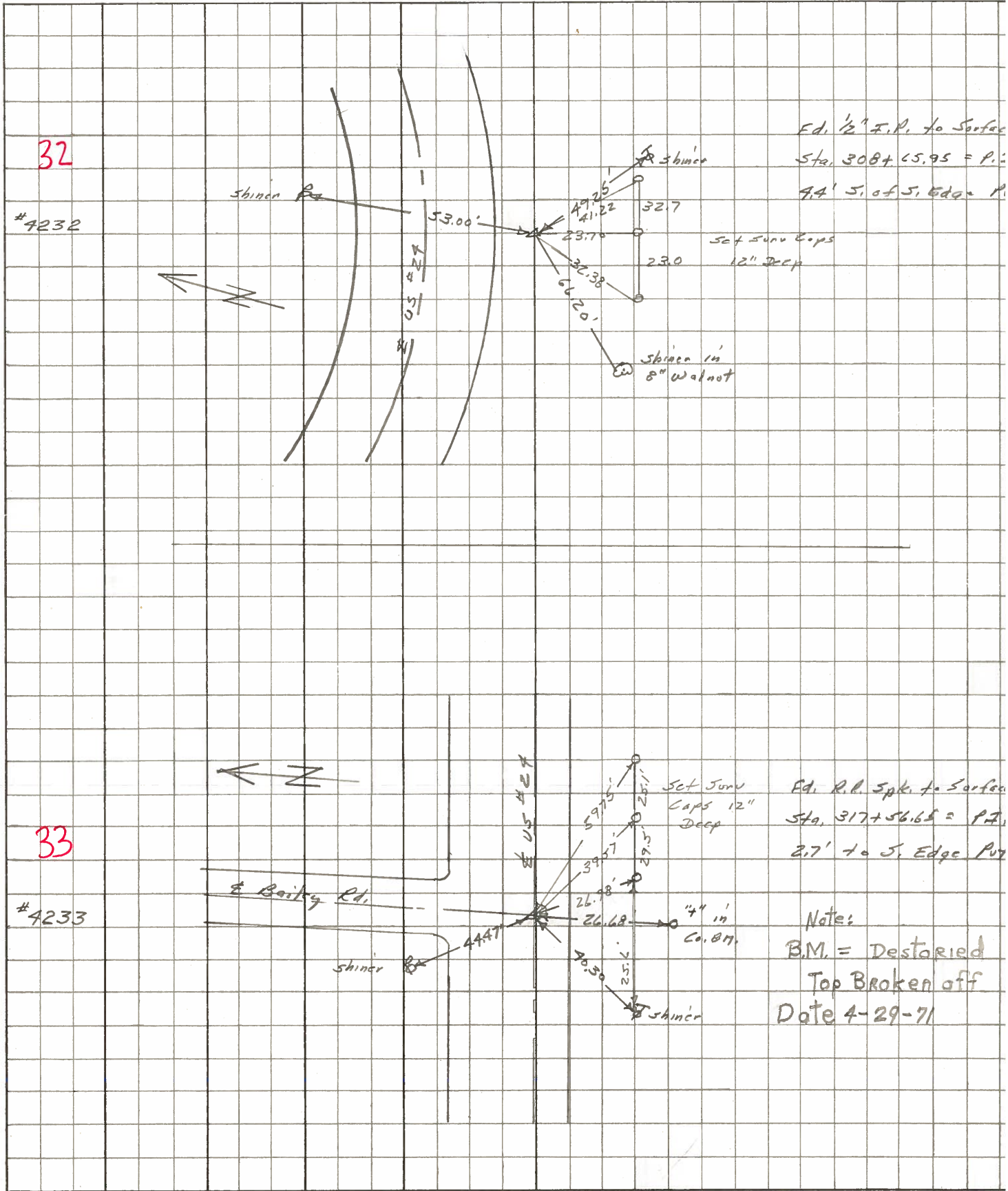


Found Railroad Spike to Surface
 Sta. 317+56.65 = P.I.
 2.7' to S. Edge Pvt.

245

PERSONNEL	TITLE	PERSONNEL	TITLE	COUNTY	DATE
Stone	Notes			Lucas	May 68
Beck	Flag			S. R. #29	WEATHER Fair
Michalak	Tape			SEC.	TEMP.
Schroder	Tape				

DESCRIPTION References to Centre Points JOB NO.



PERSONNEL	TITLE	PERSONNEL	TITLE	COUNTY	Lucas	DATE	13 Feb 22
Stone				S. R.	#29	WEATHER	Cloud
Beck				SEC.		TEMP.	31°
Brindley							
Schroeder							

DESCRIPTION _____ *Refs to Central Points* _____ JOB NO. _____

LEFT

CENTER LINE

RIGHT

DESCRIPTION	LEFT	CENTER LINE	RIGHT	JOB NO.
266+43.17 = P.O.T. Fd. R.R. Spt. 27 To Surface		76.70'	S.W. To Shiner in T.P.	(D)
		45.27'	S.S.E. To R/W Mon.	(D)
		45.47'	N.N.E. To R/W Mon.	(D)
		48.85'	N.E. To Shiner in P.P.	(D)
269+87.04 = P.O.T. Fd. R.R. Spt. 28 To Surface		80.20'	N.E. To Shiner in SW. Cor. Gang	(D)
		45.38'	S.E. To Shiner in 6" Tree	(D)
		69.07'	S.W. To Shiner in T.P.	(D)
		55.68'	N.W. To Shiner in P.P.	(D)
289+72.82 = P.I. Fd. R.R. Spt. 29 To Surface		45.16'	S.S.W. To Shiner in 78" Tree	(P)
		45.78'	S.S.E. To Shiner in T.P.	(D)
		55.95'	N.E. To Shiner in P.P.	(D)
		43.49'	N.N.W. To Shiner in 6" Pine	(D)
296+72.12 = P.O.T. (Box 121) Fd. R.R. Spt. 30 To Surface		75.48'	N.N.E. To Shiner in T.P.	(P)
		50.82'	N.E. To Shiner in P.P.	(P)
		62.99'	N.W. To Shiner in P.P.	(D)
		41.30'	S. To Shiner in T.P.	(P)
304+38.50 = P.O.T. (Otsaga Rd.) Fd. R.R. Spt. 31 To Surface		33.92'	N.W. To Shiner in P.P.	(D)
		38.07'	S.S.E. To Cor. Road Sign	(D)
		40.86'	S.S.W. To Shiner in T.P.	(D)
		71.52'	S.W. To N.E. Cor. Cur. Porch-Stub	(D)
308+65.95 = P.I. Fd. 1/2" I.P. 32 To Surface (Bent Over)		53.00'	N.N.E. To Shiner in P.P.	(D)
		49.25'	S.E. To Shiner in T.P.	(D)
		66.20'	S.W. To Shiner in 8' Walnut	(D)

PERSONNEL TITLE PERSONNEL TITLE
 Silvester _____
 # _____
 Crew _____

COUNTY Lucas DATE 1959
 S. R. #24 WEATHER _____
 SEC. He-Luc.-Waterville TEMP. _____
 (0.00)

DESCRIPTION LEFT CENTER LINE RIGHT JOB NO.

