

O.D.O.T. DISTRICT 2 SURVEY OFFICE

PERSONNEL

REFERENCE NO. 33

SHEET 40 OF 68

NOTES HUSS

H.C. VAN DUSEN

R.C. LOENRKE

DATE 6-5-97

WEATHER FAIR

TEMP. +70°F

ROUTE U.S. 24

COUNTY LUCAS

TOWNSHIP PROVIDENCE

SECTION 26

T. 10 N. R. 9 E.

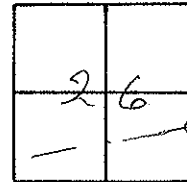
TYPE MONUMENT PK NAIL/W

ON SURFACE - ~~BELOW~~ Yes

~~5.2~~ 6' TO RT. EDGE PAV'T. - RIGHT 6' RT

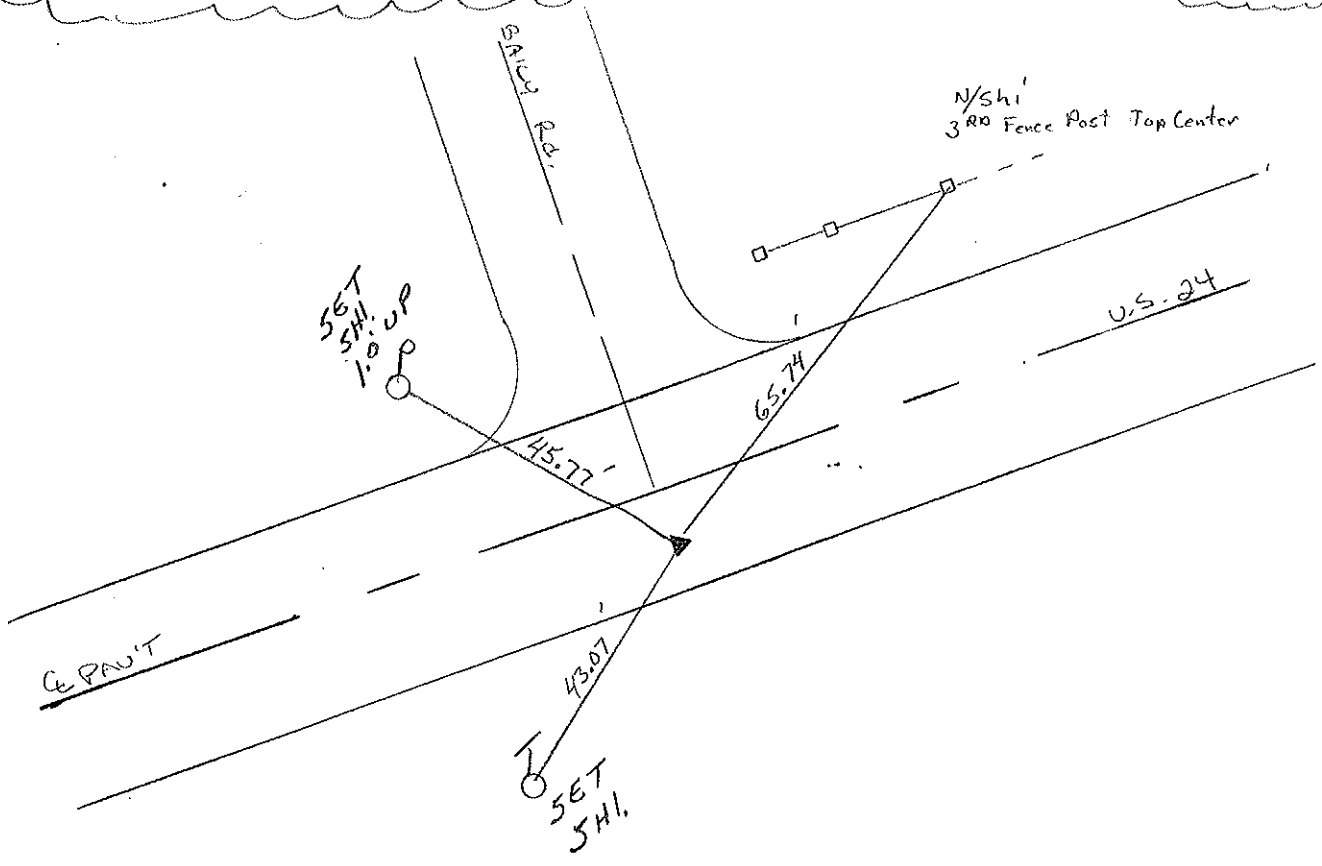
5.2 TO RT. EDGE PAVEMENT

S.L.M. 317+04



Records: P.I.
PLAN STATIONING = 317+56.65

Set PK/W
10-22-97
SAH



Q.D.O.T. DISTRICT 2 SURVEY OFFICE

Sht. 39 of

County Lucas S.R. 05 #24

Date 17 July 1980 OK 9-4-80 G.W.S.

Township Providence

Weather Warm

Section 26

Temp. 80°

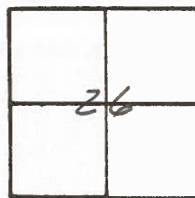
T_N, R_E

Personnel L. Stone

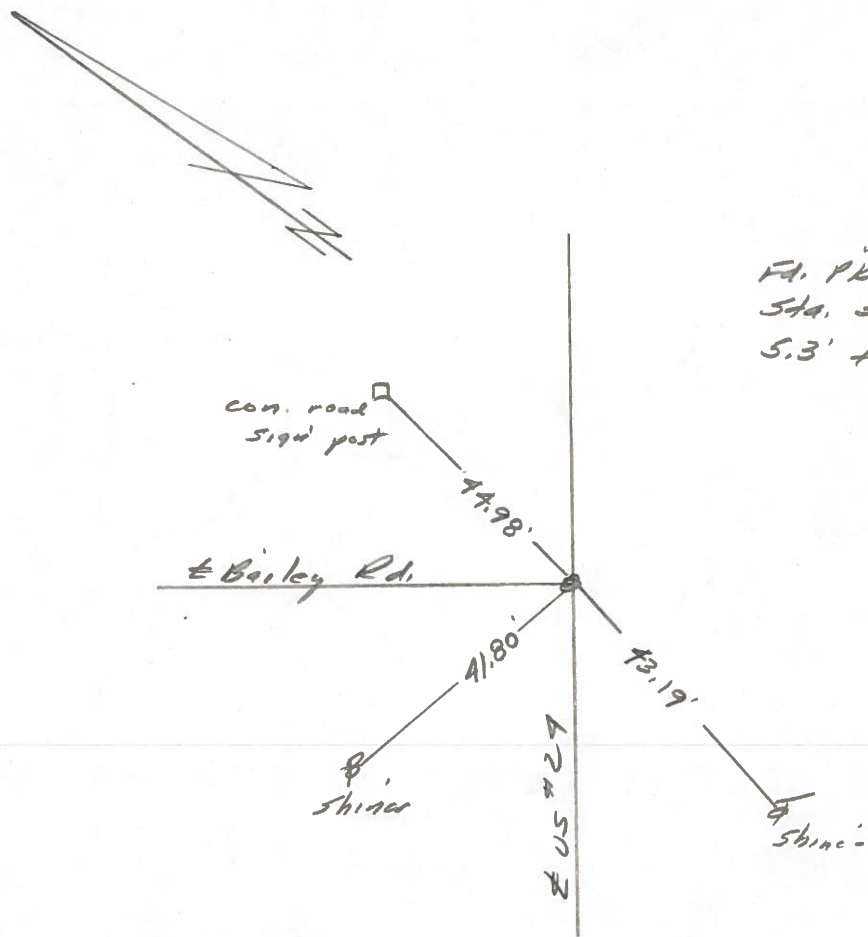
P. Newson

D. Curtis

33



Ref. No. 7233



Ed. PK Nail To Surface
Sta. 317+56.65 = P.I.
5.3' to S. edge put.

PERSONNEL	TITLE	PERSONNEL	TITLE
W Denno			
D Curtis			
R Engel			

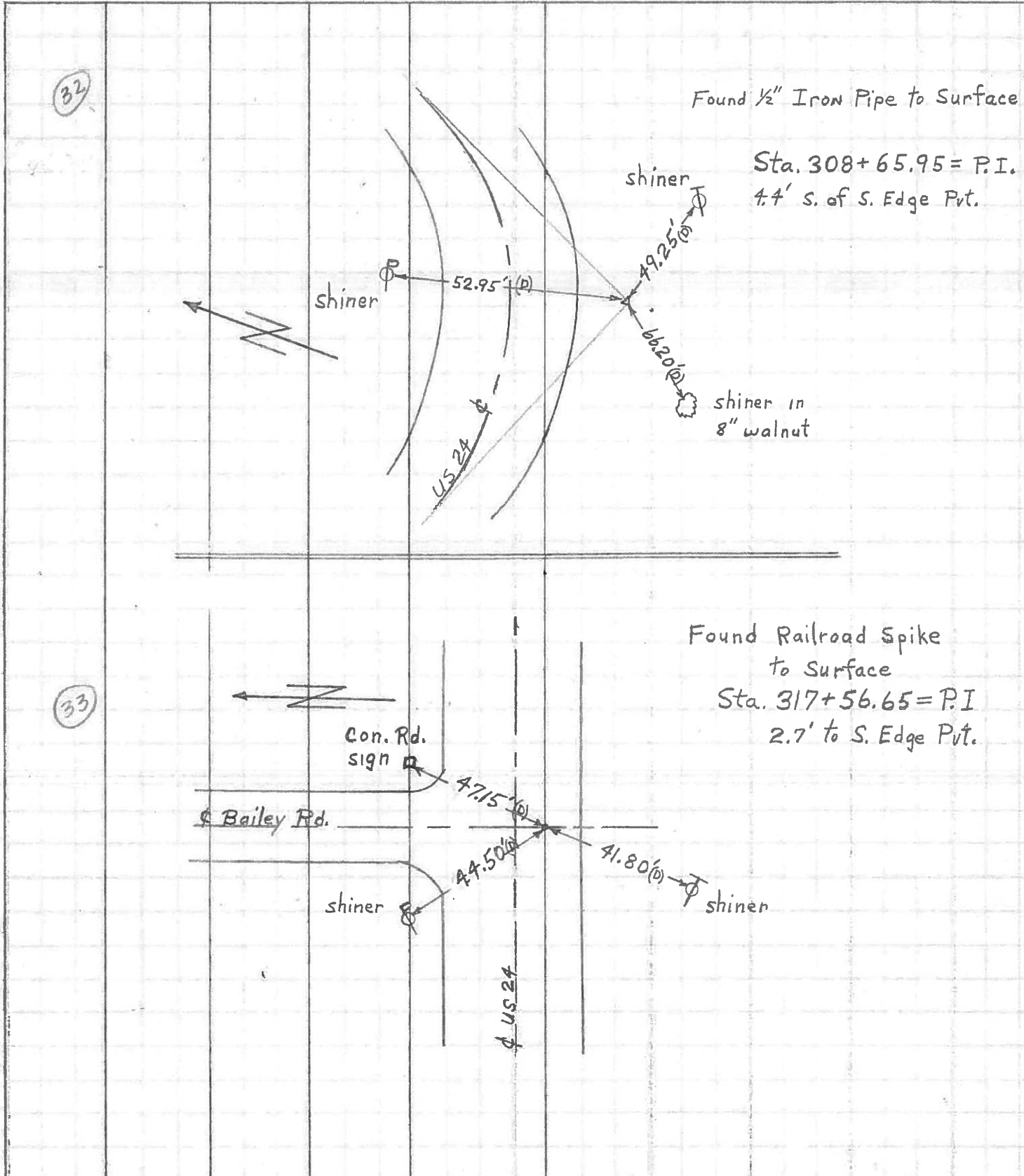
COUNTY Lucas DATE April 29, 1971

S. R. US# 24 WEATHER Mild

SEC. TEMP. 45°

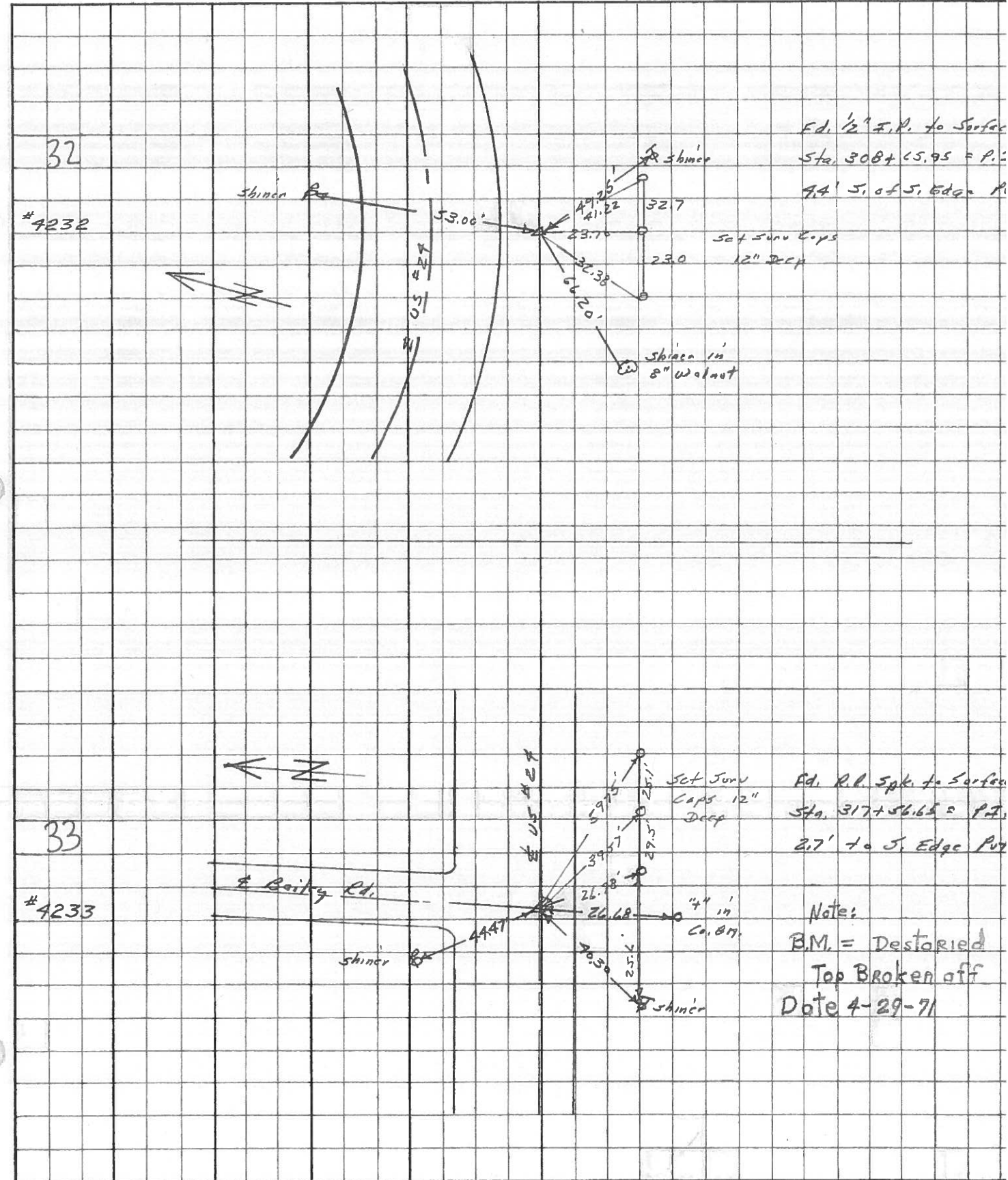
DESCRIPTION References to Control Points JOB NO.

LEFT CENTER LINE RIGHT



PERSONNEL	TITLE	PERSONNEL	TITLE	COUNTY	DATE	WEATHER	TEMP.
Stone	Notes			Lucas	May 68	Fair	
Beck	Flag			S. R. #29			
Michalak	Tape						
Schroder	Tape			SEC.			

DESCRIPTION References to Control Points JOB NO.



PERSONNEL Stone TITLE _____ PERSONNEL Schroeder TITLE _____ COUNTY Lucas DATE 7 Feb 66
Dunno _____ _____ _____ _____ S. R. #24 WEATHER Cool
Beck _____ _____ _____ _____ SEC. _____ TEMP. 26°
Brindley _____ _____ _____ _____

DESCRIPTION _____ Refs. to Control Points _____ JOB NO. _____
 LEFT _____ CENTER LINE _____ RIGHT _____

DESCRIPTION	LEFT	CENTER LINE	RIGHT
317+51.15 = P.I. (BAILEY RD.)		47.47	N.W. To Shiner in P.P. (D)
	Ed. R.R. Spl.	40.30'	S.W. To Shiner in T.P. (D)
33	To Surface	26.68'	S. To Checked 7' in Con. Mon. (P)
327+71.96 = P.I.		33.70'	S. To "X" on Con. "A" Post (D)
	Ed. R.R. Spl.	58.95'	N.E. To Shiner in P.P. (D)
34	To Surface	49.82'	S.E. To Shiner in T.P. (D)
331+35.27 = P.O.T. (Hartzfield Rd)		61.09'	S.W. To Shiner in T.P. (D)
	Ed. R.R. Spl.	51.35'	N.W. To Luc. Co. S.M. (D)
35	To Surface	57.17'	N.W. To Shiner in T.P. (D)
		81.52'	N. To R.R. Spl. & Hartzfield (D)
336+61.30 = P.I.			Searched for Could Not Find
36			
345+55.88 = P.I.		77.28'	S. To Shiner in T.P. (D)
	Ed. PK Nail	79.51'	S.W. To Shiner in 18" Plym (D)
37	To Surface	53.16'	N.W. To Shiner in P.P. (D)
350+95.72 = P.I.		86.02'	N.E. To Shiner in P.P. (D)
	Ed. PK Nail	47.53'	N.W. To Shiner in P.P. (D)
38	To Surface	58.09'	S.W. To Shiner in End Guard Post (D)
356+41.25 = P.I.		83.91'	N.E. To Shiner in 17" Box Elder (D)
	Ed. PK Nail	59.60'	N.W. To Shiner in P.P. (D)
39	To Surface	51.85'	S.E. To Shiner in End Guard Post (D)
		43.76'	S.W. To Shiner in 7th Guard Post (D)

PERSONNEL	TITLE	PERSONNEL	TITLE
Silvester			
#			
CREW			

COUNTY Lucas DATE 1958
 S. R. #24 WEATHER _____
 SEC. He-Luc.-Waterville TEMP. _____
 (0.00)

DESCRIPTION LEFT CENTER LINE RIGHT JOB NO.

