

O.D.O.T. DISTRICT 2 SURVEY OFFICE

PERSONNEL

REFERENCE NO. 34

SHEET 41 OF 68

NOTES HUSS

H.C. VAU DUSEN

DATE 6-5-97

ROUTE U.S. 24

R.C. LOENHLE

WEATHER FAIR

COUNTY LUCAS

A C. COX

TEMP. +70°F

TOWNSHIP PROVIDENCE

SECTION 24

T6 N R 9 E

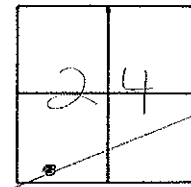
TYPE MONUMENT P.K. NAIL / W

ON SURFACE - BELOW ON

LEFT - C PAV'T. - RIGHT 2.5' RT

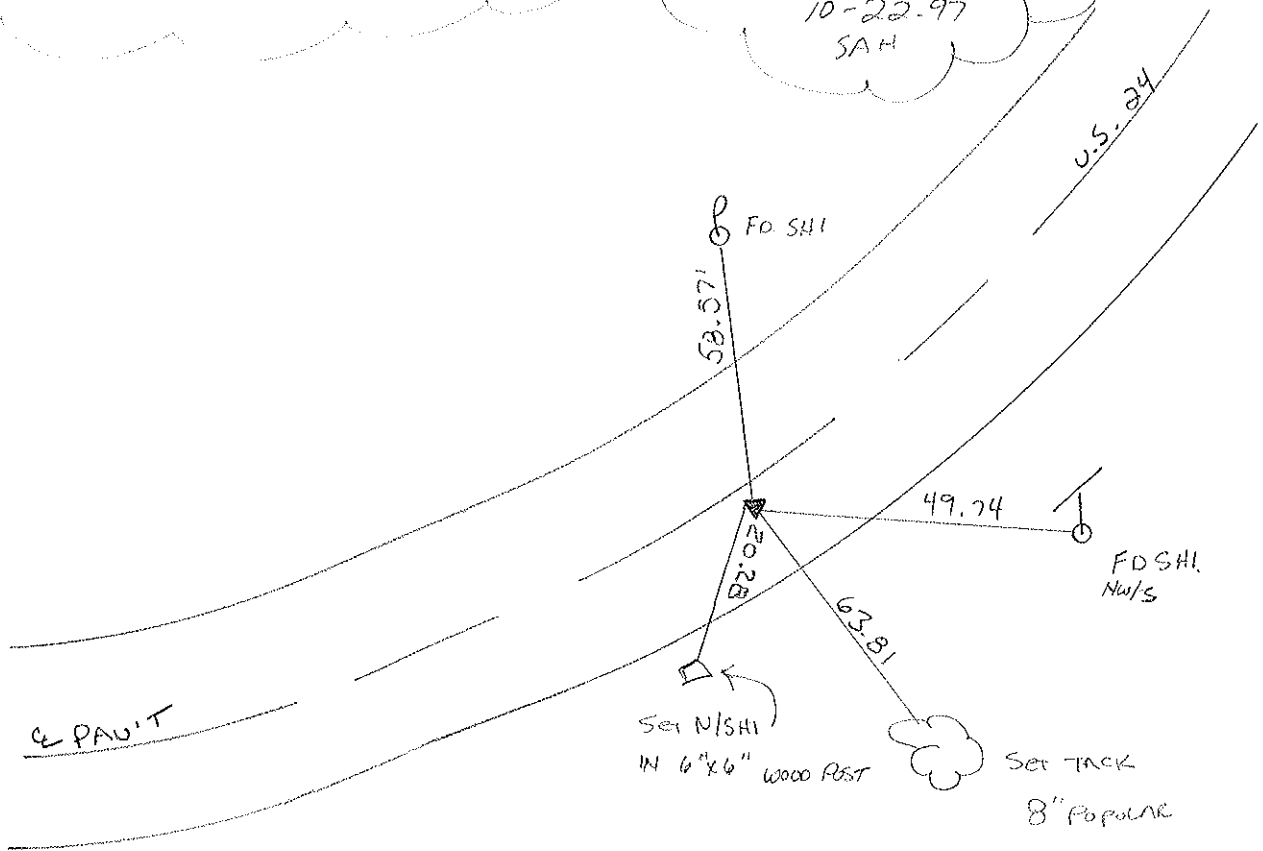
9.8' TO RT EDGE PAVEMENT

S.L.M. 327+26



Record: P.I. PLAW STATIONING = 327+71.96

Set PK/WASHER
10-22-97
SAH



Q.D.O.T. DISTRICT 2 SURVEY OFFICE

Sht. 40 of

County Lucas SR. US #29

Date 23 July 1980
OK - 9-4-80 C.W.S.

Township Providence

Weather Windy

Section 24

Temp. 75°

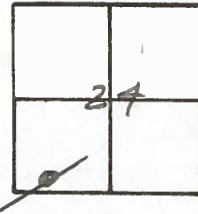
T N, R E

Personnel I. Stone

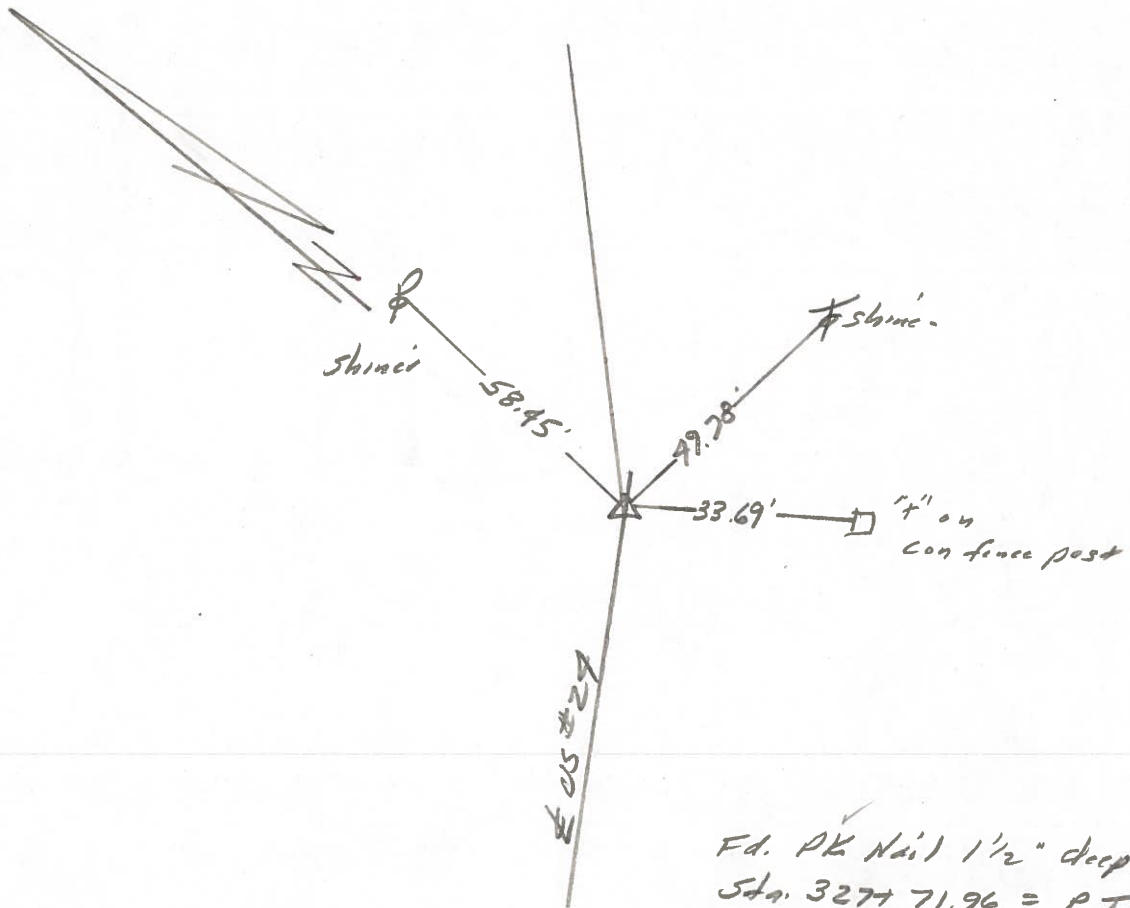
R. Michalak

D. Curtis

34



Ref. No. 4234



Ed. PK Nail 1 1/2" deep
Sta. 3277 71.96 = P.I.
13.9' to N. edge pt.
10.0' to S. edge pt.

PERSONNEL	TITLE	PERSONNEL	TITLE
W. Denno			
D. Curtis			
R. Engel			

COUNTY Lucas DATE April 29, 1971

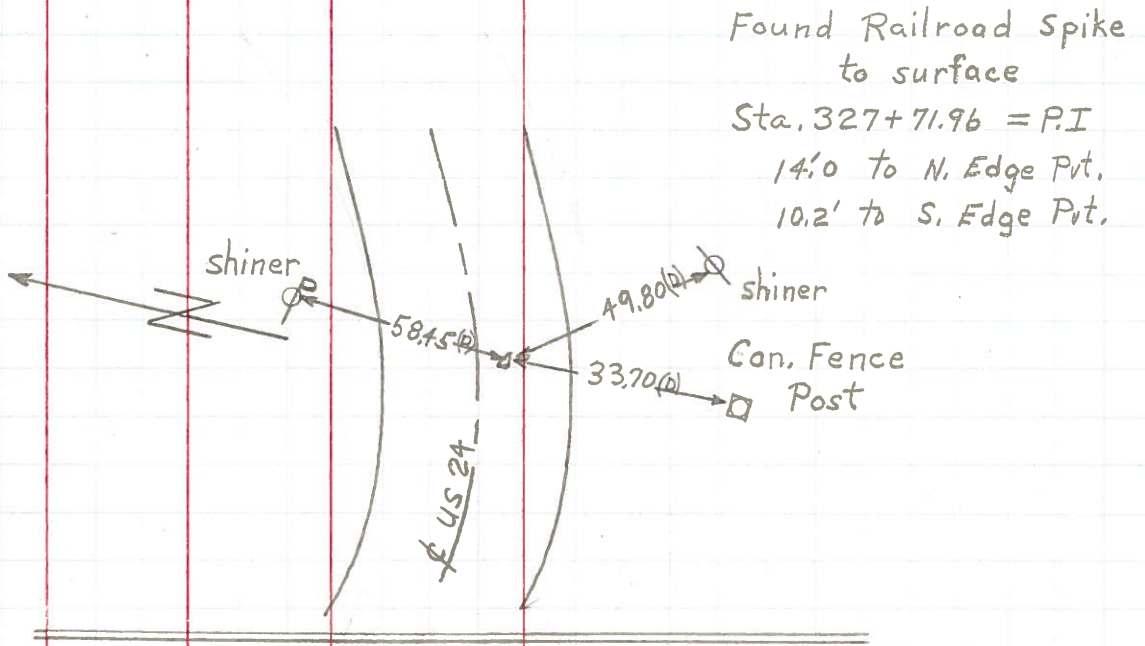
S. R. U.S. # 24 WEATHER Mild

SEC. TEMP. 45°

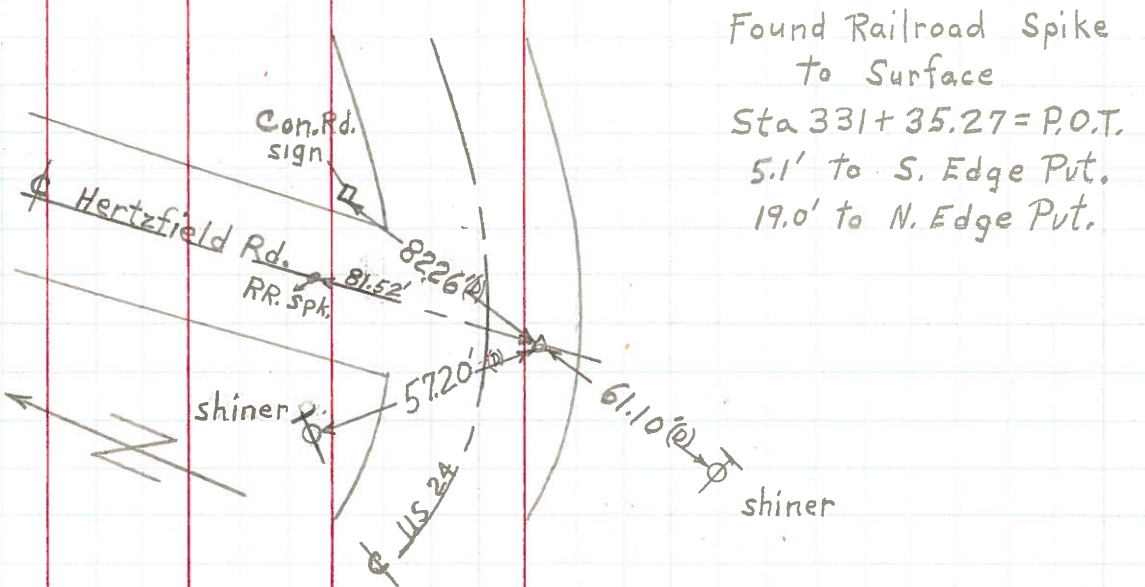
DESCRIPTION References to Control Points JOB NO.

LEFT CENTER LINE RIGHT

34

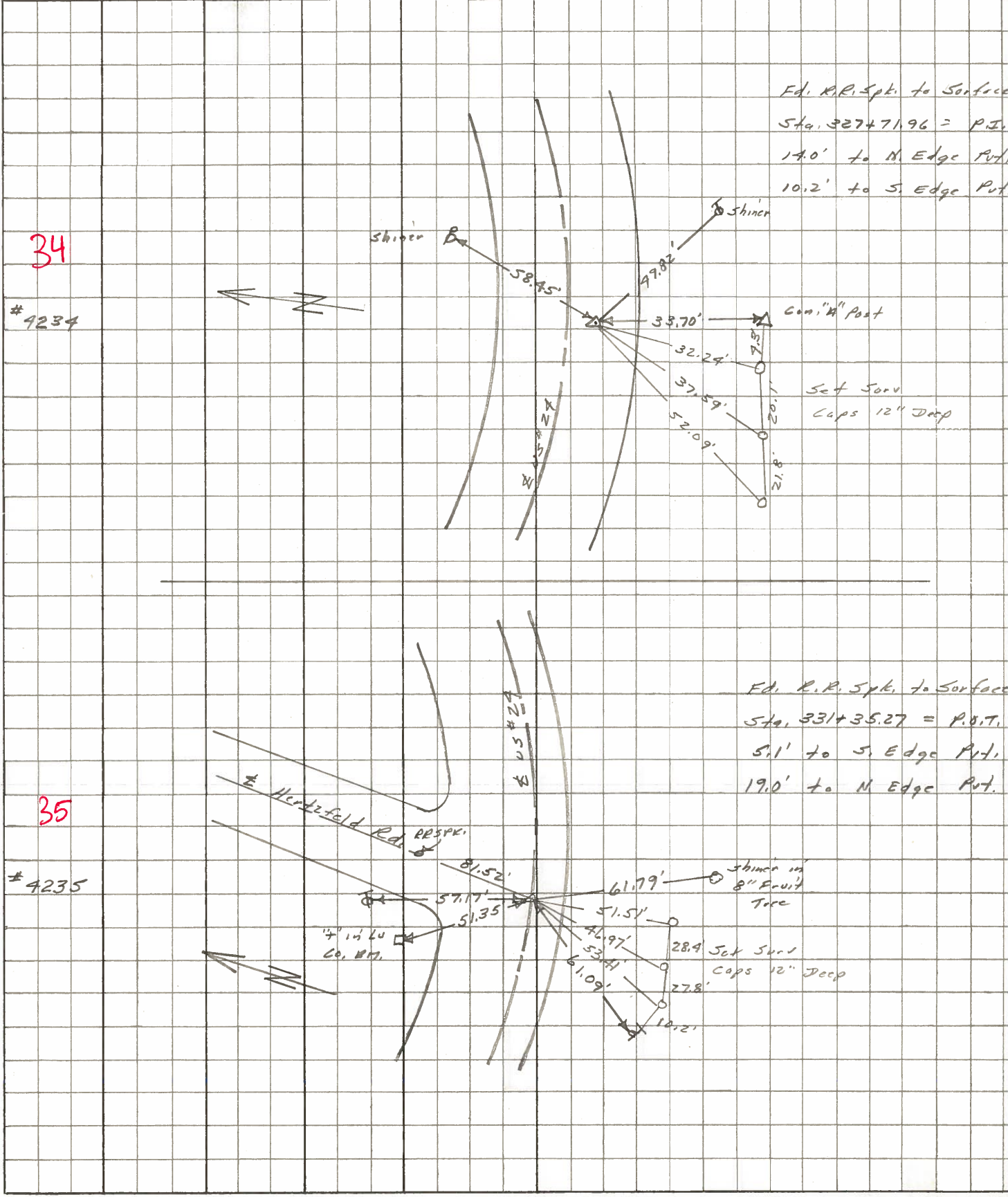


35



PERSONNEL	TITLE	PERSONNEL	TITLE	COUNTY	DATE
Stone	Notes			Lucas	May 68
Beck	Flag			# 27	WEATHER Fair
Michalak	Tape			SEC.	TEMP.
Schroder	Tape				

DESCRIPTION References to Control Points LEFT CENTER LINE RIGHT JOB NO.



PERSONNEL	TITLE	PERSONNEL	TITLE	COUNTY	Lucas	DATE	7 Feb 66
Stone		Schroder		S. R.	#29	WEATHER	Cool
Danno				SEC.		TEMP.	26°
Beck							
Brindley							

DESCRIPTION Pets to Control Points JOB NO. _____

	LEFT	CENTER LINE	RIGHT
317+56.65 = P.I. (BAKER Rd.)		44.47	N.W. To Shiner in P.P. (2)
	Ed. R.R. Spk.	40.30'	S.W. To Shiner in T.P. (2)
33	To Surface	26.68'	S. To Checkd 7' in Con Men. (P)
327+71.96 = P.I.		33.70'	S. To X" on Con. "A" Post (2)
	Ed. R.R. Spk.	58.45'	N.E. To Shiner in P.P. (2)
34	To Surface	79.82'	S.E. To Shiner in T.P. (2)
331+35.27 = P.O.T. (Hartzfeld Rd.)		61.09'	S.W. To Shiner in T.P. (2)
	Ed. R.R. Spk.	51.35'	N.W. To Luc. Co. S.M. (2)
35	To Surface	57.17'	N.W. To Shiner in T.P. (2)
		81.52'	N. To R.R. Spk. & Hartzfeld (2)
336+61.30 = P.I.			Searched for Could Not Find
36			
345+55.08 = P.I.		77.28'	S. To Shiner in T.P. (2)
	Ed. PK No. 1	79.51'	S.W. To Shiner in 18" Poplar (2)
37	To Surface	53.16'	N.W. To Shiner in P.P. (2)
350+95.72 = P.I.		86.02'	N.E. To Shiner in P.P. (2)
	Ed. PK No. 1	47.53'	N.W. To Shiner in P.P. (2)
38	To Surface	58.09'	S.W. To Shiner in End Guard Post (2)
356+41.25 = P.I.		83.91'	N.E. To Shiner in 17" Box Elder (2)
	Ed. PK No. 1	59.60'	N.W. To Shiner in P.P. (2)
39	To Surface	51.85'	S.E. To Shiner in End Guard Post (2)
		43.76'	S.W. To Shiner in 7th Guard Post (2)

PERSONNEL	TITLE	PERSONNEL	TITLE
Silvester			
#			
CREW			

COUNTY Lucas DATE 1958

S. R. #24 WEATHER

SEC. He-Luc.-Waterville (0.00) TEMP.

DESCRIPTION LEFT CENTER LINE RIGHT JOB NO.

