

O.D.O.T. DISTRICT 2 SURVEY OFFICE

PERSONNEL

REFERENCE NO. 35

SHEET 42 OF 68

NOTES HUSS

H.C. VAUDSOSEN

DATE 6-5-97

ROUTE U.S. 24

R.C. LOEBRKE

WEATHER FAIR

COUNTY LUCAS

A C. COX

TEMP. +70°F

TOWNSHIP PROVIDENCE

SECTION _____

T 6 N 9 E

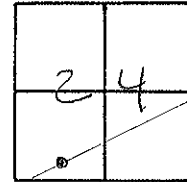
TYPE MONUMENT PK/W

ON SURFACE ~~BELOW~~ Surface

LEFT- & PAV'T. - RIGHT 7.8'

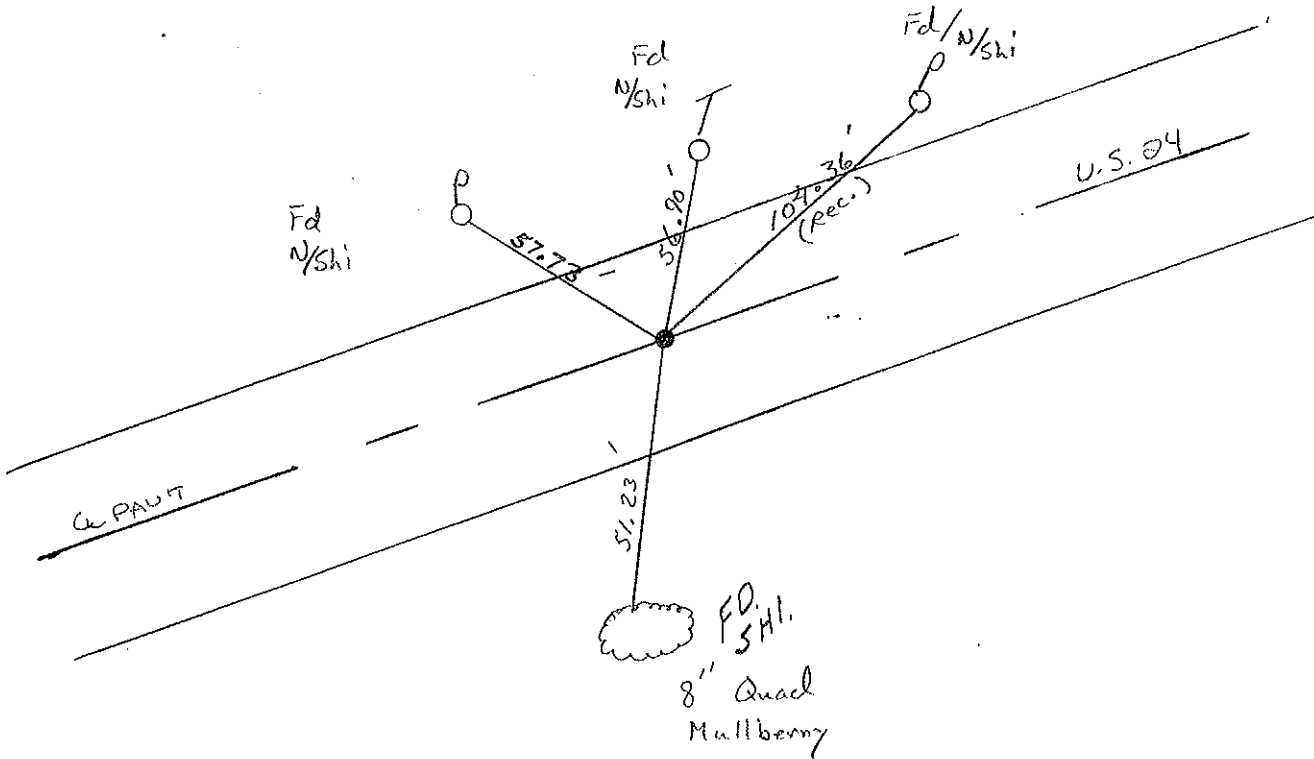
4.6' TO RT. EDGE PAVEMENT

S.L.M. 330+92



Record: POT PLAN STATIONING 331+35.27
 Fd Lg RR Spk - 3" below 6-5-97 SAH

Set PK/W
 10-22-97
 SAH



Q.D.O.T. DISTRICT 2 SURVEY OFFICE

Sht. 4 of

County Lucas S.R. US #24

Date OK-9-4-80 G.W.S.
23 July 1980

Township Providence

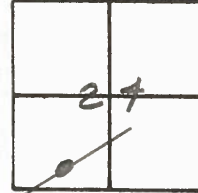
Weather Windy

Section 24

Temp. 78°

T N, R E

Personnel I. Stone

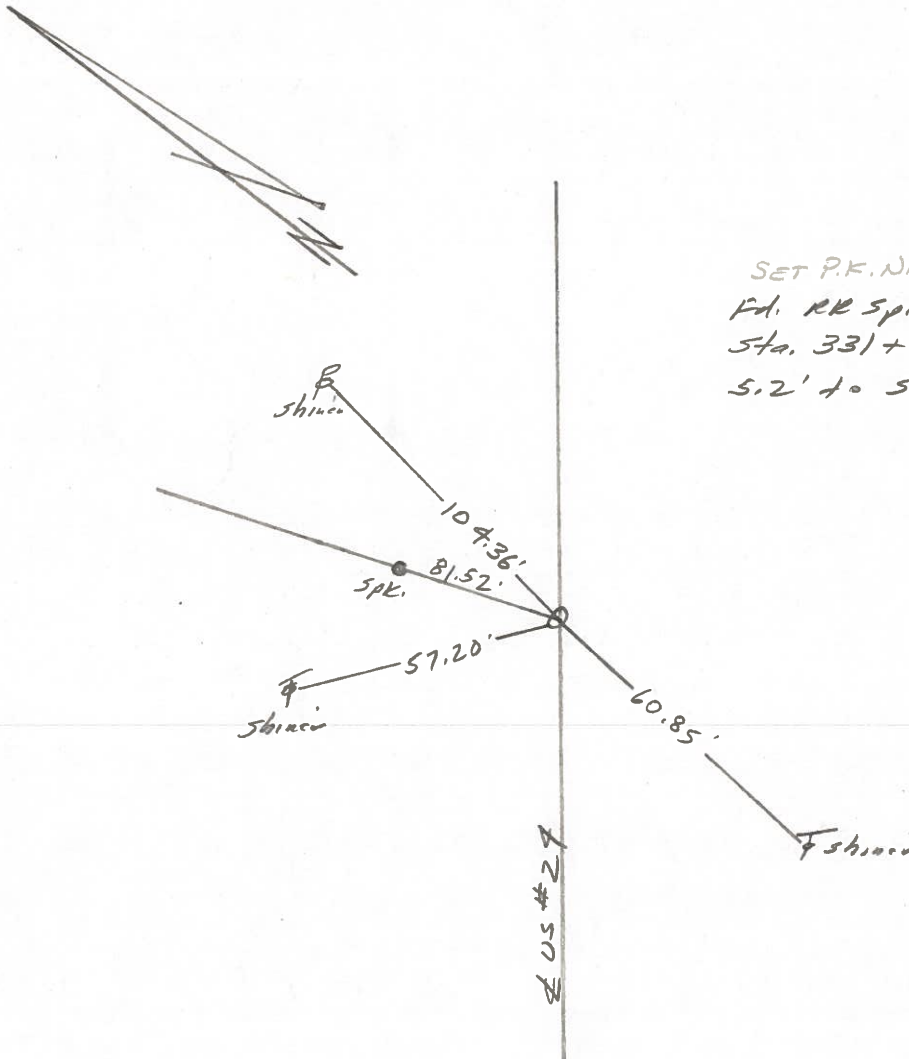


R. Michalak

D. Curtis

35

Ref. No. 4235



PERSONNEL	TITLE	PERSONNEL	TITLE
W. Denna			
D. Curtis			
R. Engel			

COUNTY Lucas

DATE April 29, 1971

S. R. U.S. # 24

WEATHER Mild

SEC.

TEMP. 45°

DESCRIPTION

References to Control Points

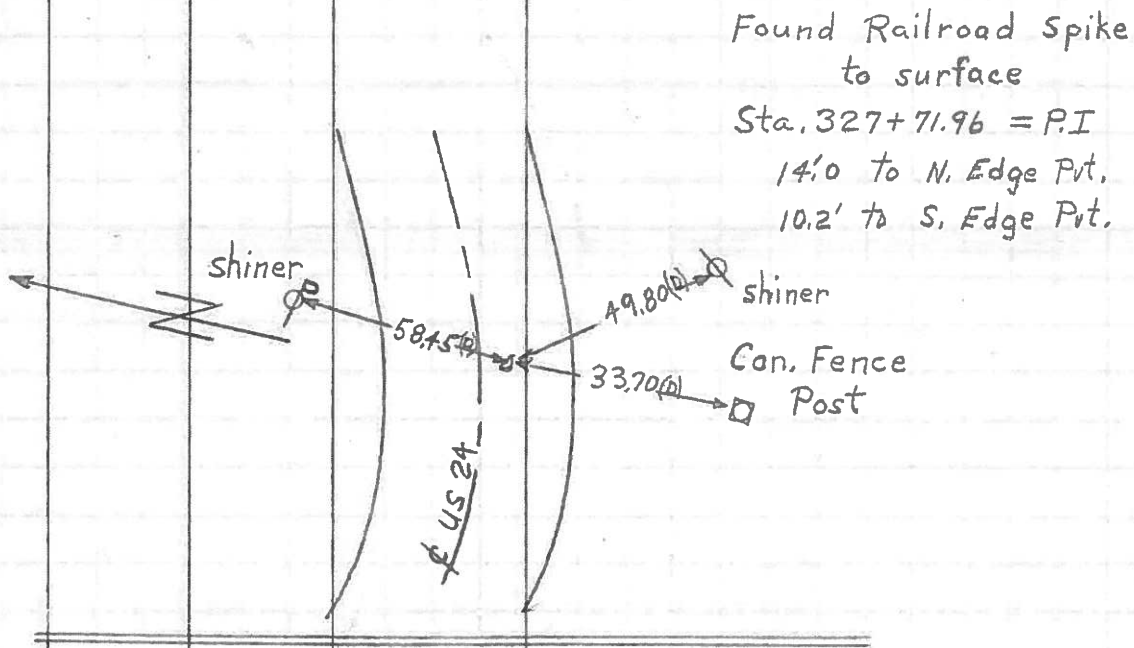
JOB NO.

LEFT

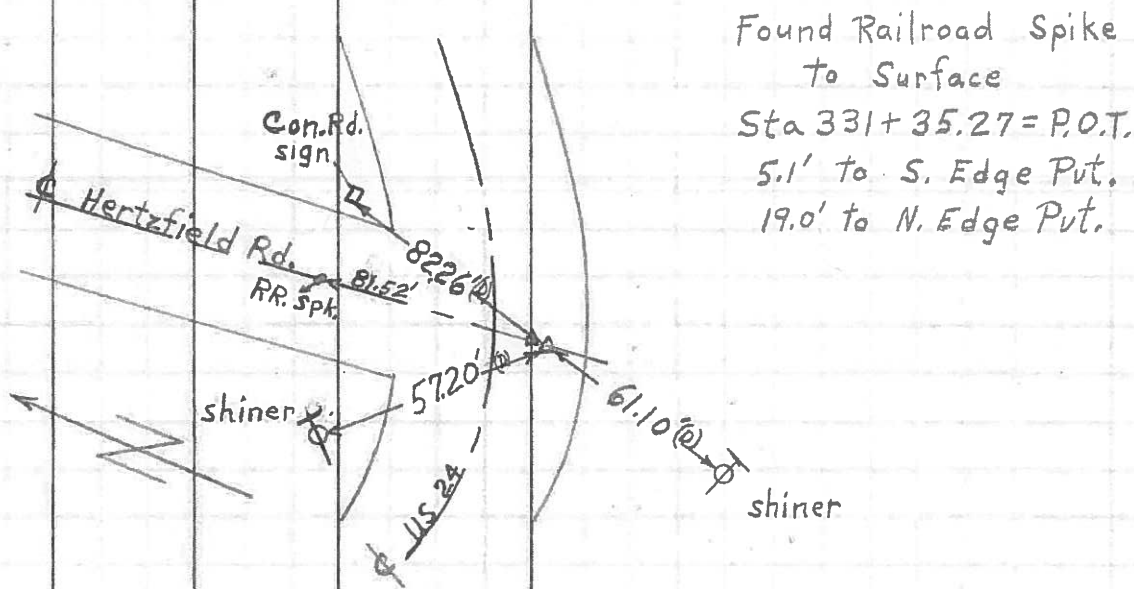
CENTER LINE

RIGHT

34

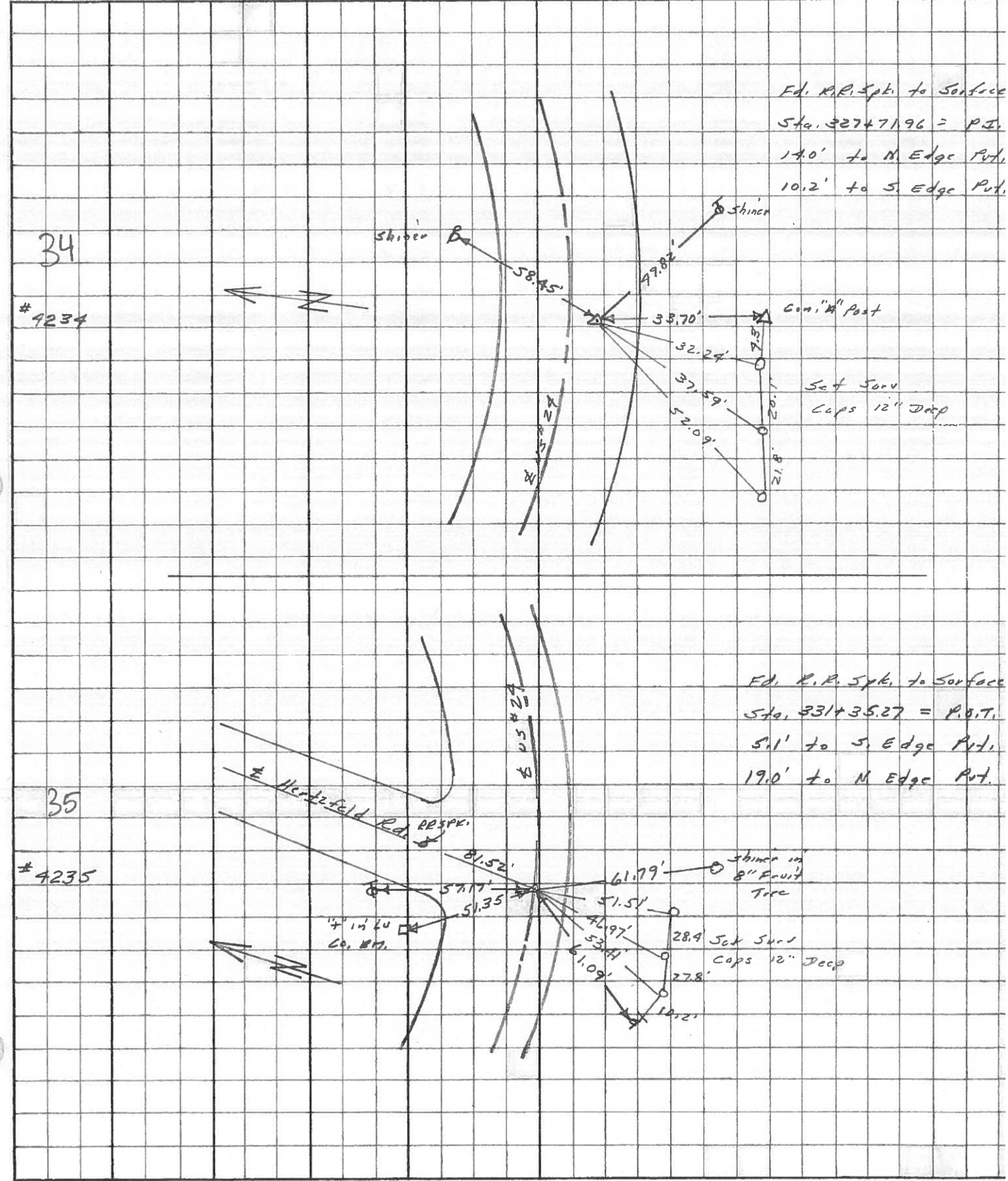


35



PERSONNEL	TITLE	PERSONNEL	TITLE	COUNTY	DATE	WEATHER	TEMP.
Stone	Notes			Lucas	May 68	Fair	
Beck	Flag			S. R. #24			
Michalak	Tape						
Schroder	Tape			SEC.			

DESCRIPTION References to Control Points JOB NO. _____



STREET NO. _____

PERSONNEL	TITLE	PERSONNEL	TITLE	COUNTY	Lucas	DATE	7 Feb 66
Stone		Schroeder		S. R.	#84	WEATHER	Cool
Dunno				SEC.		TEMP.	26°
Brick							
Brindley							

Refs to Control Points

DESCRIPTION	LEFT	CENTER LINE	RIGHT	JOB NO.
317+56.65 = P.I. (BAKER Rd)		44.47	N.W. To Shiner in P.P. (2)	
	Ed. R.R. Spk.	40.30'	S.W. To Shiner in T.P. (2)	
33	To Surface	26.68'	S. To Chisled 7' in Con Men. (P)	
327+71.96 = P.I.		33.70'	S. To X" on Con. "A" Post (2)	
	Ed. R.R. Spk.	58.45'	N.E. To Shiner in P.P. (2)	
34	To Surface	79.82'	S.E. To Shiner in T.P. (2)	
331+35.27 = P.O.T. (Hartzfeld Rd)		61.09'	S.W. To Shiner in T.P. (2)	
	Ed. R.R. Spk.	51.35'	N.W. To Luc. Co. S.M. (2)	
35	To Surface	57.17	N.W. To Shiner in T.P. (2)	
		81.52'	N. To R.R. Spk. & Hartzfeld (2)	
336+61.30 = P.I.			Searched for Could Not Find	
36				
345+55.88 = P.I.		77.28'	S. To Shiner in T.P. (2)	
	Ed. PK No. 1	79.51'	S.W. To Shiner in 18" Poplar (2)	
37	To Surface	53.16'	N.W. To Shiner in P.P. (2)	
350+95.72 = P.I.		86.02'	N.E. To Shiner in P.P. (2)	
	Ed. PK No. 1	47.53'	N.W. To Shiner in P.P. (2)	
38	To Surface	58.09'	S.W. To Shiner in End Guard Post (2)	
356+41.25 = P.I.		83.91'	N.E. To Shiner in 17" Box Elder (2)	
	Ed. PK No. 1	59.60'	N.W. To Shiner in P.P. (2)	
39	To Surface	51.85'	S.E. To Shiner in End Guard Post (2)	
		43.76'	S.W. To Shiner in 7th Guard Post (2)	

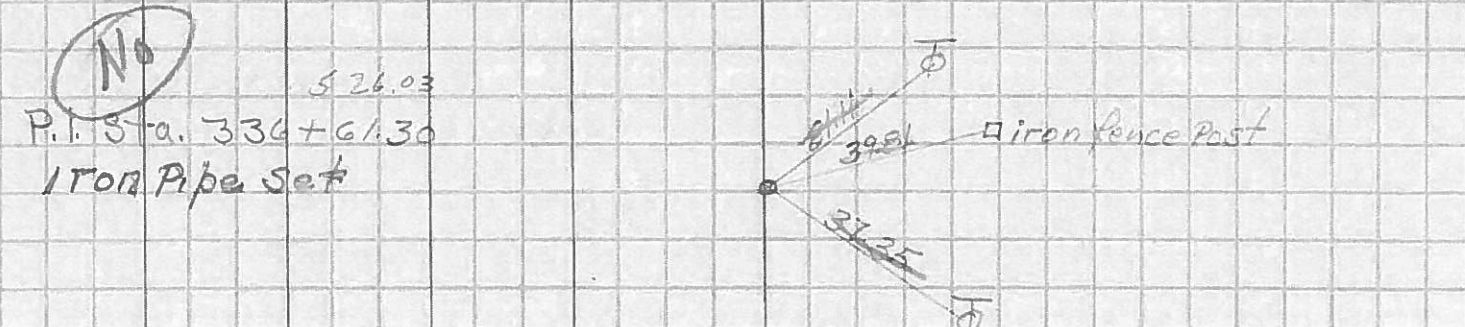
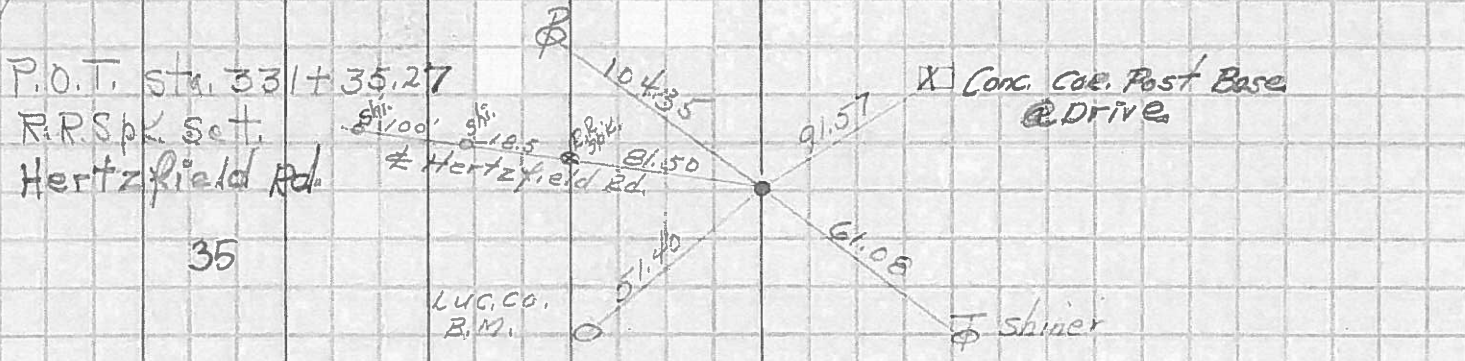
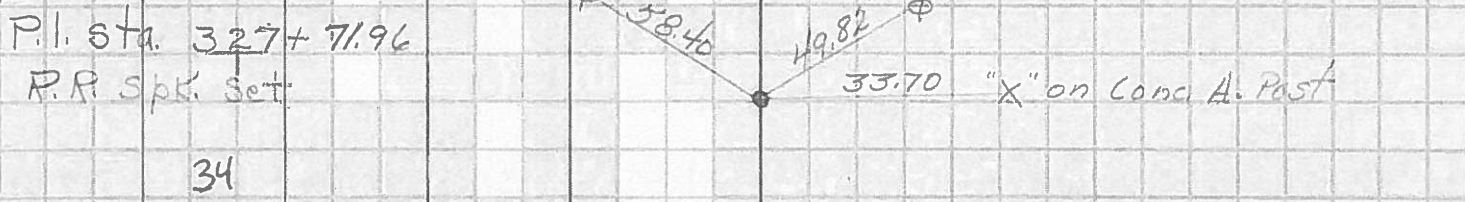
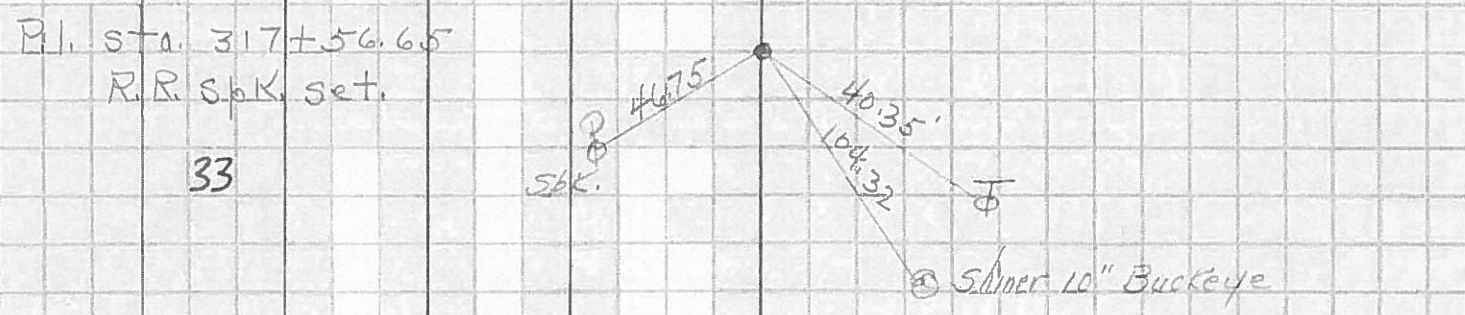
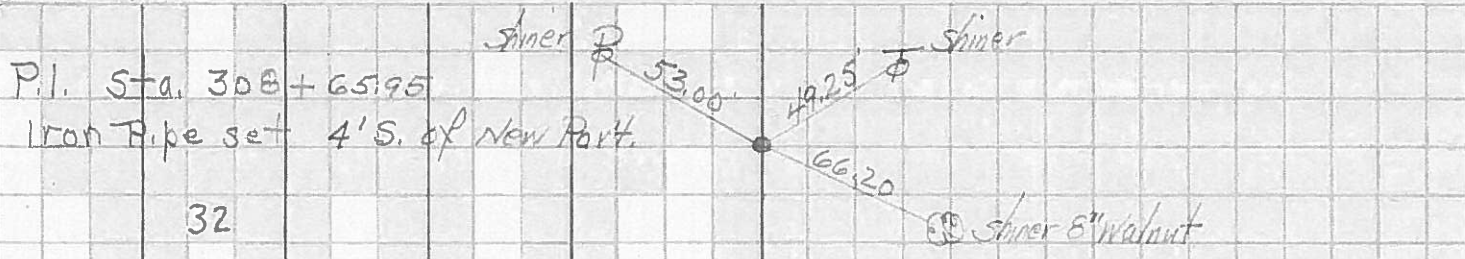
PERSONNEL	TITLE	PERSONNEL	TITLE
Silvester			
#			
CREW			

COUNTY Lucas DATE 1959

S. R. #24 WEATHER

SEC. He-Luc.-Waterville TEMP. (0.00)

DESCRIPTION LEFT CENTER LINE RIGHT JOB NO.



PERSONNEL TITLE PERSONNEL TITLE

COUNTY Lucas DATE 1955

S. R. #24 WEATHER

SEC. TEMP.

DESCRIPTION U.S. #24 Sec. H 41

JOB NO.

LEFT

CENTER LINE

RIGHT

#257 Sta. 231+19.95 Iron Bolt & inter. Hertzfield Rd. & U.S. #24

35

1/25/55 85.76' N.E. to X in Conc. Hdwl.
 30.88' E.S.E. to X in top of C.B.
 52.43' S.W. to Shiner in T.P.

#258 Sta. 236+48 P.I.

#259 Sta. 245+46.27 P.I.

#260 Sta. 250+86.47 P.I.

#261 Sta. 256+54.39 P.I.

#262 Sta. 263+18.1 P.I.