

O.D.O.T. DISTRICT 2 SURVEY OFFICE

PERSONNEL _____

REFERENCE NO. 37

SHEET 44 OF 68

NOTES HOSS

H.C. VAUDUSEN

DATE 6-5-97

ROUTE U.S. 24

R.C. LOEHRKE

WEATHER FAIR

COUNTY LUCAS

C. COY

TEMP. +70°F

TOWNSHIP PROVIDENCE

SECTION 24

T. 6 N. R. 9 E.

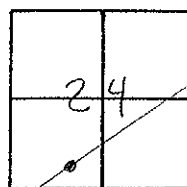
TYPE MONUMENT P.K. NAIL/W

ON SURFACE - BELOW ON

LEFT - C. PAVT. - RIGHT 6.9'

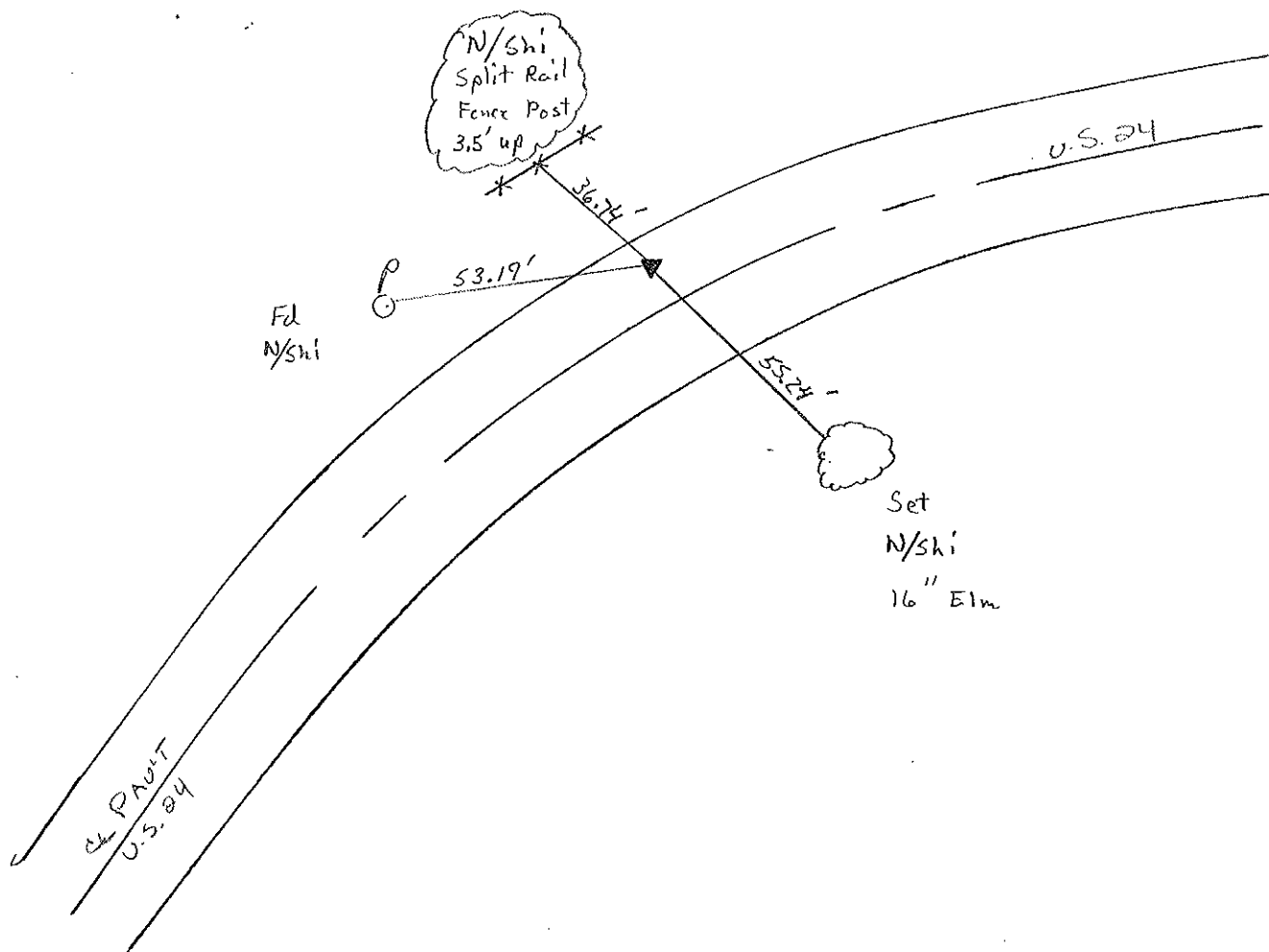
4.7 TO LT EDGE PAVEMENT

S.L.M. 344+96



Records: P.I. PLAN STA. = 345+55.88

Set PK/W
 10-22-97
 SAH



OD.O.T. DISTRICT 2 SURVEY OFFICE

Sht. 13 of

OK-9-4-80 G.W.S.

County Lucas SR, US#24

Date 23 July 1980

Township Providence

Weather Warm

Section 24

Temp. 78°

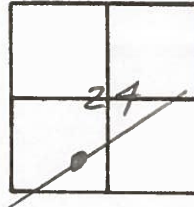
T N, R E

Personnel I. Stone

R. Michalek

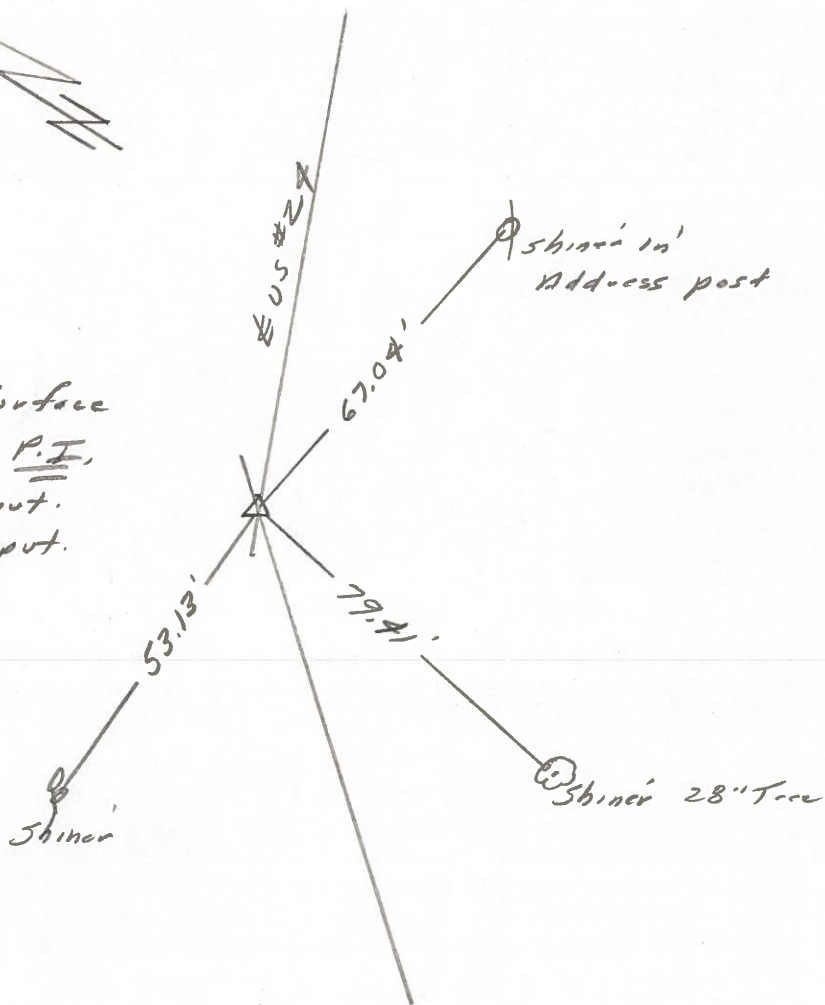
D. Curtis

37



Ref. No. 4237

Fd. PK Nail To Surface
Sta. 345+55.88 = P.I.
4.7' to N. edge put.
19.5' to S. edge put.



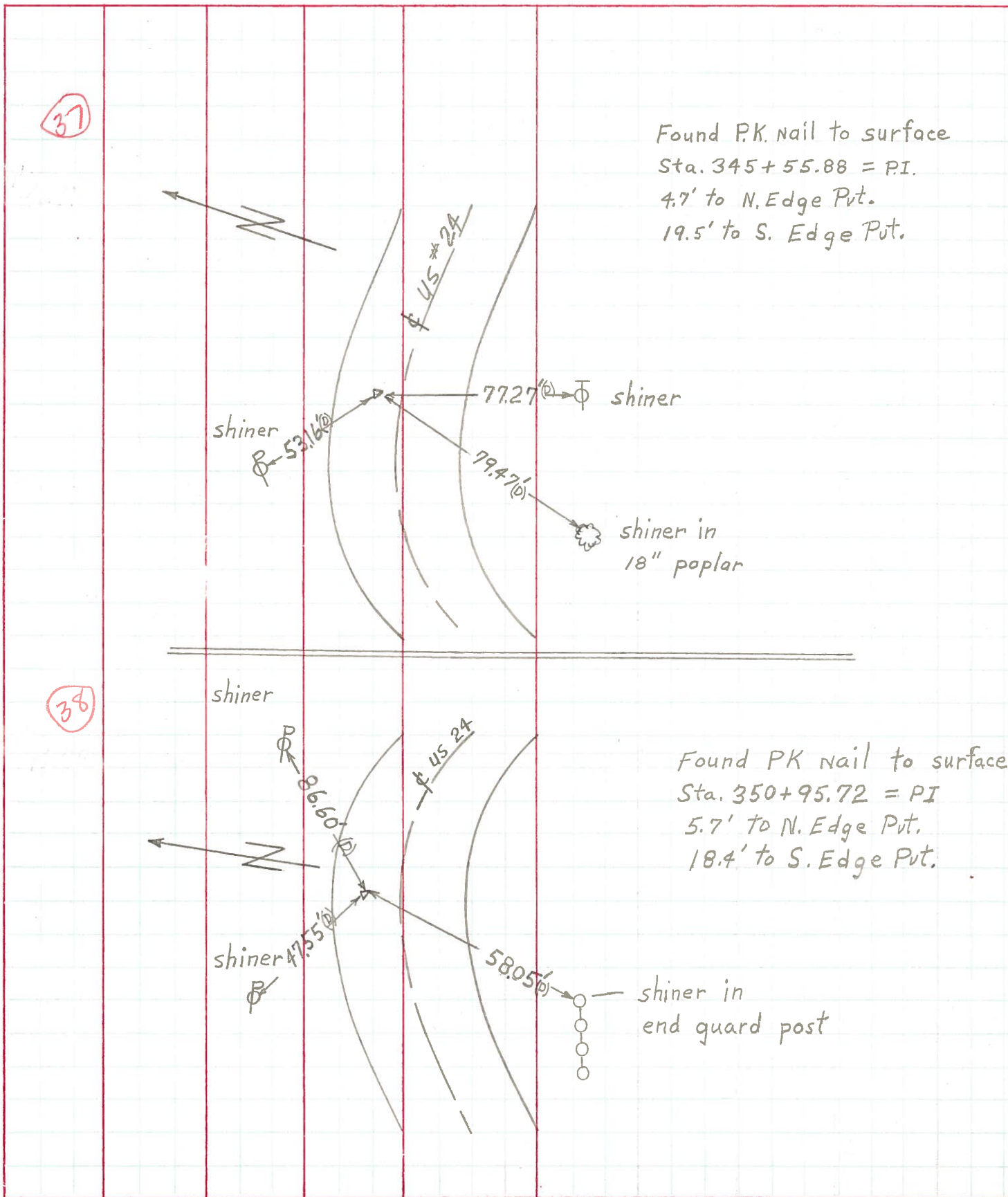
PERSONNEL TITLE PERSONNEL TITLE
 W. Denno _____
 D. Curtis _____
 R. Engel _____

COUNTY Lucas DATE April 30, 1977

S. R. US. # 24 WEATHER Mild

SEC. _____ TEMP. 47°

DESCRIPTION References to Control Points JOB NO. _____



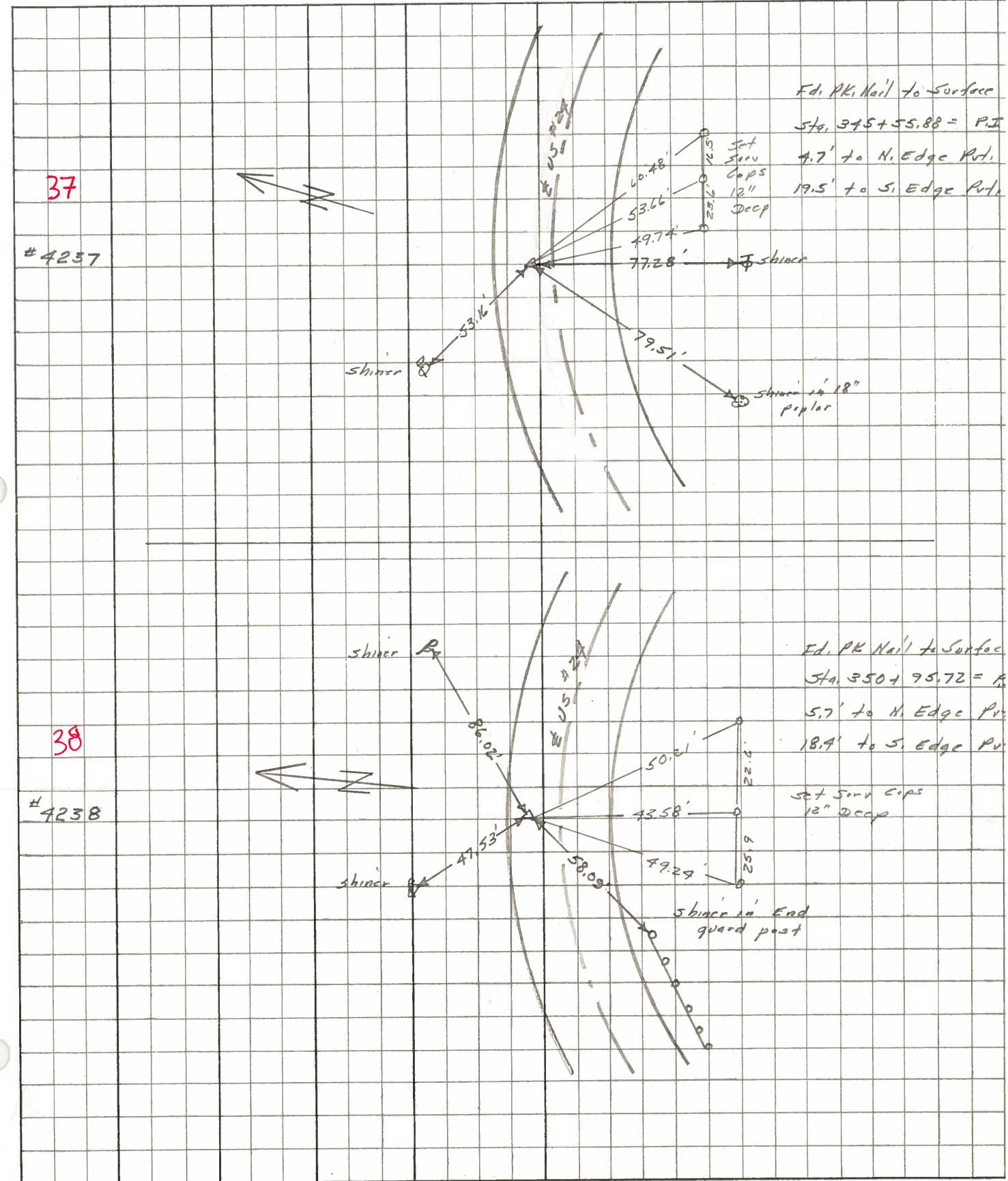
37

Found P.K. nail to surface
 Sta. 345+55.88 = P.I.
 4.7' to N. Edge Pnt.
 19.5' to S. Edge Pnt.

38

Found PK nail to surface
 Sta. 350+95.72 = P.I.
 5.7' to N. Edge Pnt.
 18.4' to S. Edge Pnt.

PERSONNEL	TITLE	PERSONNEL	TITLE	COUNTY	DATE
Stone	Notes			Lucas	May 68
Beck	Flag			S. R. # 29	WEATHER Fair
Michalak	Tape			SEC.	TEMP.
Schroder	Tape				



PERSONNEL	TITLE	PERSONNEL	TITLE	COUNTY	DATE
Stone		Schroeder		Lucas	7 Feb 66
Denno				S. R.	#24
Beck				WEATHER	Cool
Brindley				SEC.	TEMP. 26°
DESCRIPTION				Pots to Control Points	
LEFT		CENTER LINE		RIGHT	

ID	LEFT	CENTER LINE	RIGHT
33	517+56.65 = P.I. (BAKER Rd.) Fd. R.R. Spt. To Surface	44.47 40.30' 26.68'	N.W. To Shiner in P.P. (2) S.W. To Shiner in T.P. (2) S. To Check'd 7' in Con Men. (P)
34	327+71.96 = P.I. Fd. R.R. Spt. To Surface	33.70' 58.45' 79.82'	S. To X' on Con. "A" Post (2) N.E. To Shiner in P.P. (2) S.E. To Shiner in T.P. (2)
35	331+35.27 = P.O.T. (Hartefeld Rd.) Fd. R.R. Spt. To Surface	61.09' 51.35' 57.17 81.52'	S.W. To Shiner in T.P. (2) N.W. To Luc. Co. S.M. (2) N.W. To Shiner in T.P. (2) N. To R.R. Spt. & Hartefeld (2)
36	336+61.30 = P.I.		Searched for Could Not Find
37	345+55.88 = P.I. Ed. PK No. 1 To Surface	77.28' 79.51' 53.16'	S. To Shiner in T.P. (2) S.W. To Shiner in 18" Poplar (2) NW To Shiner in P.P. (2)
38	350+95.72 = P.I. Ed. PK No. 1 To Surface	86.02' 47.53' 58.09'	N.E. To Shiner in P.P. (2) N.W. To Shiner in P.P. (2) S.W. To Shiner in End Guard Post (2)
39	356+11.25 = P.I. Ed. PK No. 1 To Surface	83.91 54.60' 51.85' 43.76'	N.E. To Shiner in 17" Box Elder (2) N.W. To Shiner in P.P. (2) S.E. To Shiner in End Guard Post (2) S.W. To Shiner in 7th Guard Post (2)

PERSONNEL Silvester TITLE _____ PERSONNEL _____ TITLE _____ COUNTY Lucas DATE 1958
 # _____ S. R. #24 WEATHER _____
 crew _____ SEC. He-Luc.-Waterville TEMP. _____
 (0.00)

DESCRIPTION _____ LEFT _____ CENTER LINE _____ RIGHT _____ JOB NO. _____

