

O.D.O.T. DISTRICT 2 SURVEY OFFICE

PERSONNEL _____

REFERENCE NO. 38

SHEET 45 OF 68

NOTES Hoss

H.C. YAN DUSEN

DATE 6-5-97

ROUTE U.S. 24

R.C. LOEHLKE

WEATHER FAIR

COUNTY LUCAS

F C. COX

TEMP. +70° F

TOWNSHIP PROVIDENCE

SECTION 24

T. 6 N. R. 9 E

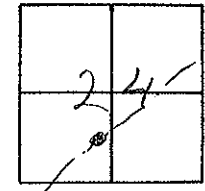
TYPE MONUMENT P.K. NAIL/W

ON SURFACE - ~~BELOW~~ YES

LEFT - ~~C. PAVT.~~ - RIGHT 5.6'

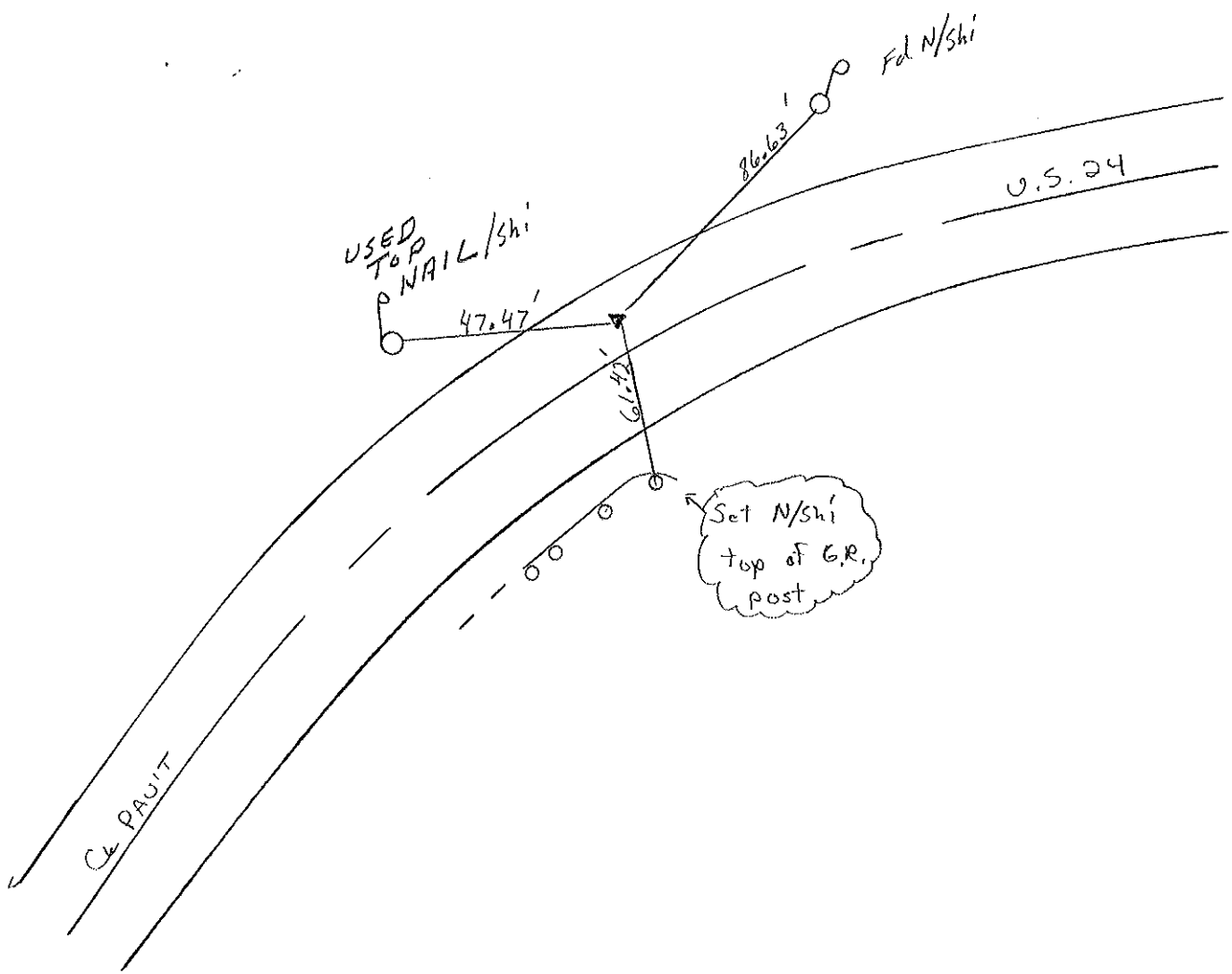
S.4 TO LT. EDGE PAVEMENT

S.L.M. 350+40



Record: P.I. PLAN STA. = 350+95.72

Set PK/W
10-22-97
SAH



ODOT. DISTRICT 2 SURVEY OFFICE

Sht. 44 of

County Lucas ~~SR~~. US# 24

Township Providence

Section 24

T N, R E

Personnel I. Stone

R. Michalak

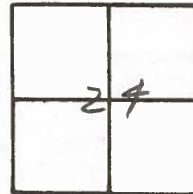
D. Curtis

38

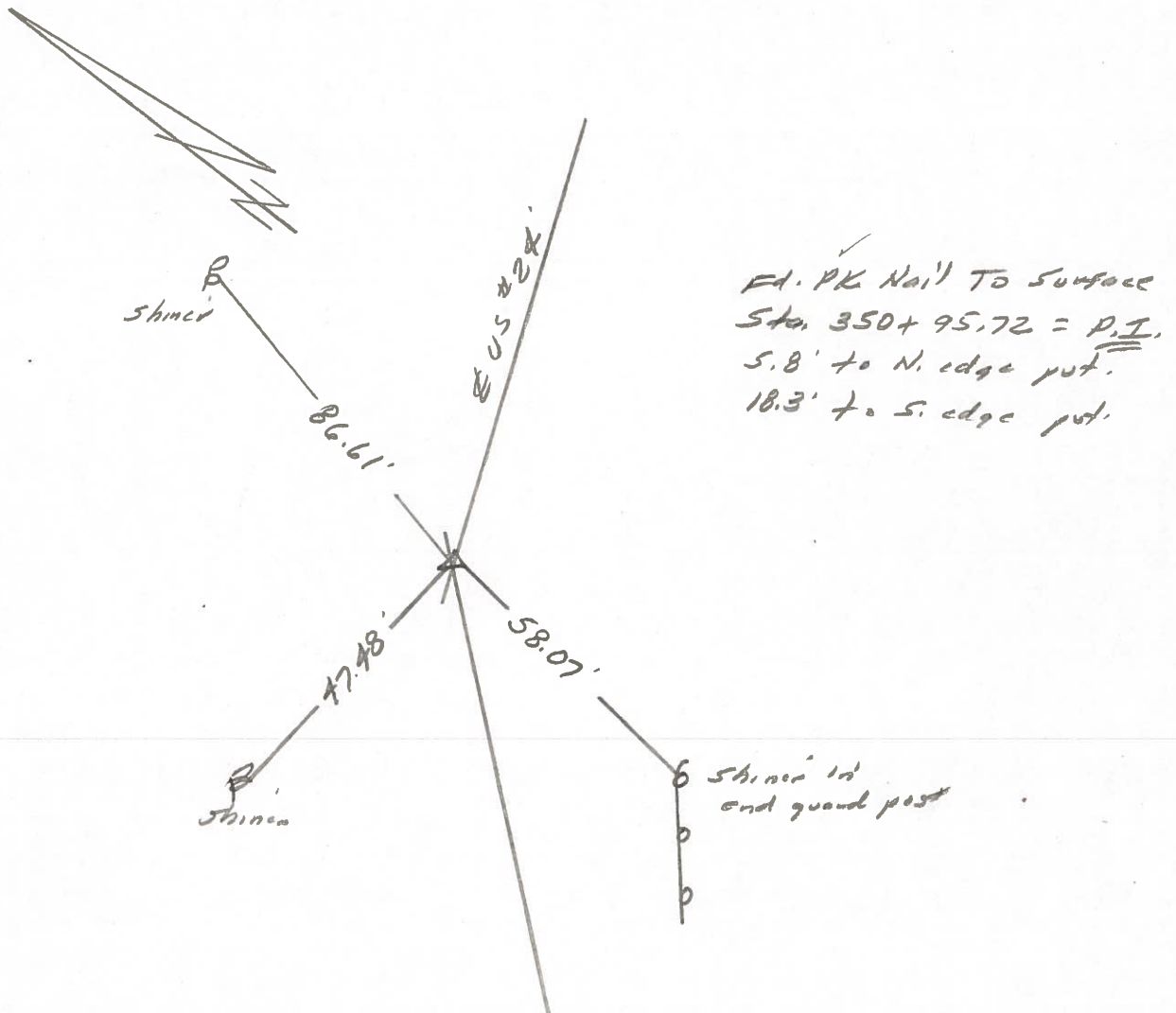
Date ^{OK-9-4-80 G.W.S.} 23 July 1980

Weather Warm

Temp. 78°



R-F. No. 4238



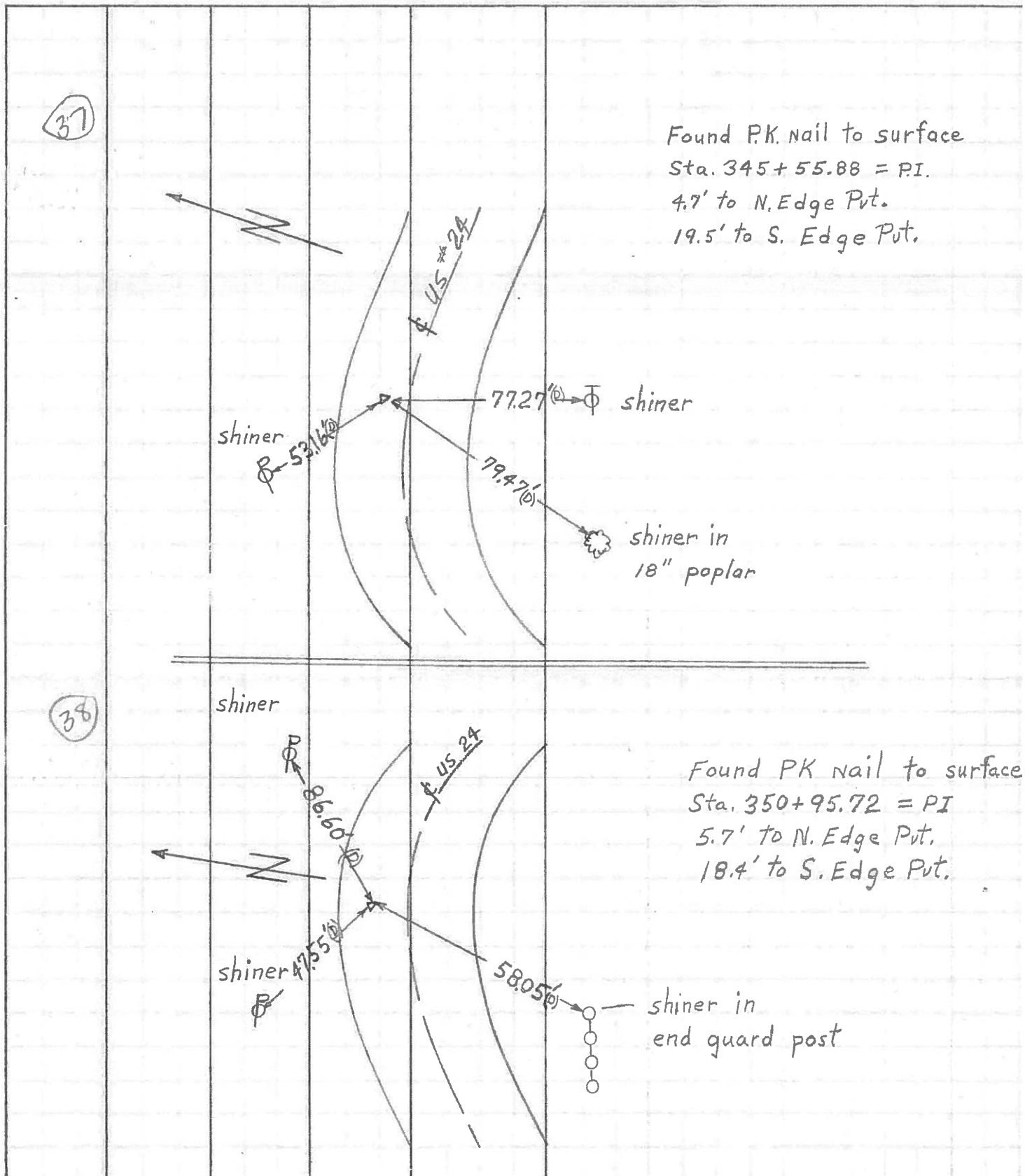
PERSONNEL	TITLE	PERSONNEL	TITLE
<u>W. Denno</u>	_____	_____	_____
<u>D. Curtis</u>	_____	_____	_____
<u>R. Engel</u>	_____	_____	_____

COUNTY Lucas DATE April 30, 1957

S. R. U.S. # 24 WEATHER Mild

SEC. _____ TEMP. 47°

DESCRIPTION References to Control Points JOB NO. _____



37

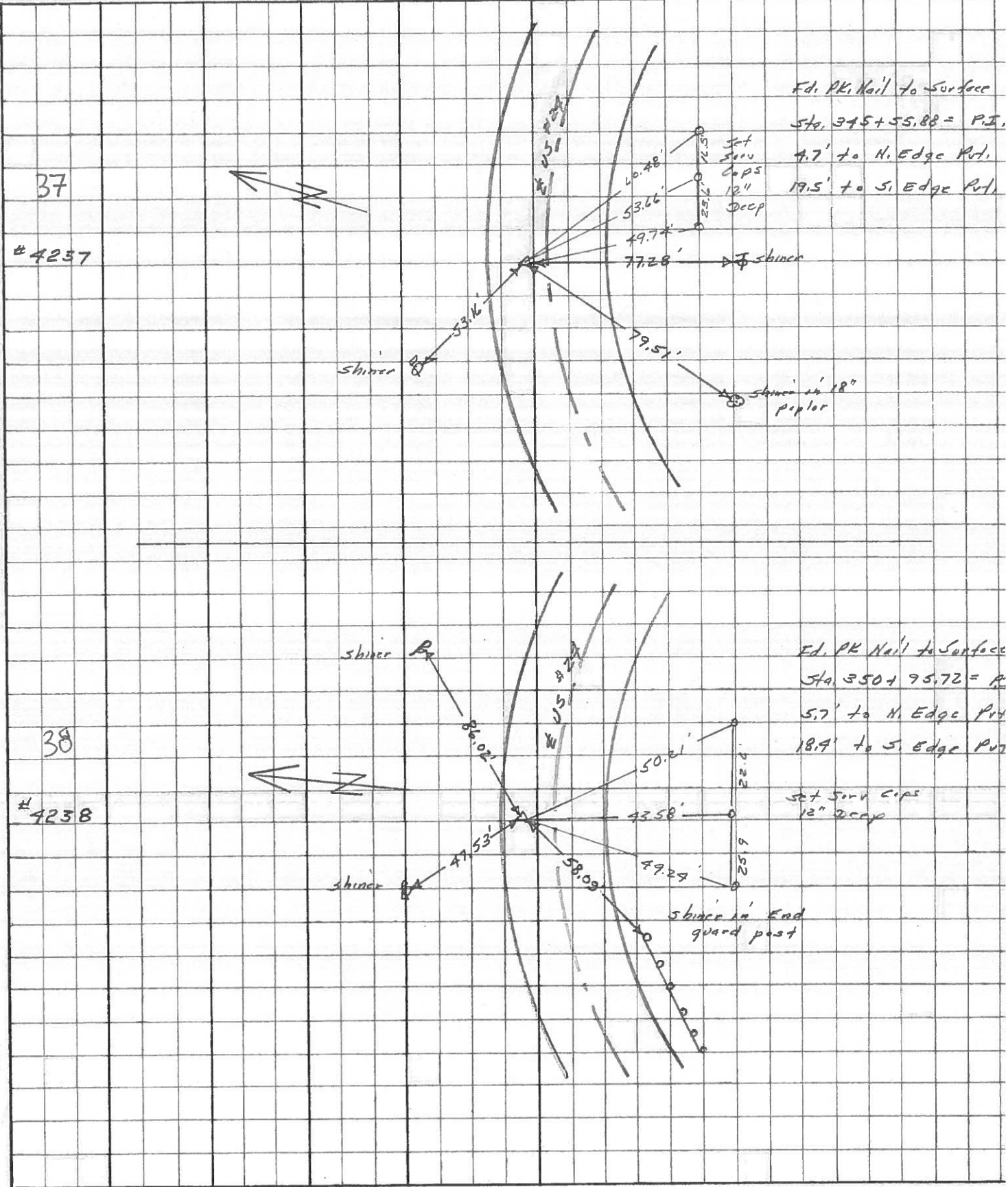
Found P.K. nail to surface
 Sta. 345+55.88 = P.I.
 4.7' to N. Edge Pnt.
 19.5' to S. Edge Pnt.

38

Found PK nail to surface
 Sta. 350+95.72 = PI
 5.7' to N. Edge Pnt.
 18.4' to S. Edge Pnt.

PERSONNEL	TITLE	PERSONNEL	TITLE	COUNTY	DATE	WEATHER	TEMP.
Stine	Notes			Lucas	May 68	Fair	
Beck	Flag			# 29			
Michalak	Tape						
Schneider	Tape						

DESCRIPTION References to Control Points JOB NO. _____
 LEFT CENTER LINE RIGHT



PERSONNEL TITLE PERSONNEL TITLE COUNTY Lucas DATE 7 Feb 66
Stone _____ Schroder _____
Dunn _____ S. R. #89 WEATHER Cool
Beck _____ SEC. _____ TEMP. 26°
Grindley _____ DESCRIPTION _____ Pkts to Control Points _____ JOB NO. _____

DESCRIPTION	LEFT	CENTER LINE	RIGHT
317+56.65 = P.I. (BAKER RD.) Ed. R.R. Spk. 33 To Surface		44.47 40.30' 26.68'	N.W. To Skinner in P.P. (D) S.W. To Skinner in T.P. (D) S. To Chiswick 7' in Con Men. (P)
327+71.96 = P.I. Ed. R.R. Spk. 34 To Surface		33.70' 58.45' 49.82'	S. To X" on Con. "A" Post (D) N.E. To Skinner in P.P. (D) S.E. To Skinner in T.P. (D)
331+35.27 = P.O.T. (Hartzfeld Rd.) Ed. R.R. Spk. 35 To Surface		61.09' 51.35' 57.17 81.52'	S.W. To Skinner in T.P. (D) N.W. To Luc. Co. S.M. (D) N.W. To Skinner in T.P. (D) N. To R.R. Spk. & Hartzfeld (D)
336+61.30 = P.I. 36			Searched for Could Not Find
345+55.88 = P.I. Ed. PK Nail 37 To Surface		77.28' 79.51' 53.16'	S. To Skinner in T.P. (D) S.W. To Skinner in 18" Poplar (D) N.W. To Skinner in P.P. (D)
350+95.72 = P.I. Ed. PK Nail 38 To Surface		86.02' 47.53' 58.09'	N.E. To Skinner in P.P. (D) N.W. To Skinner in P.P. (D) S.W. To Skinner in End Guard Post (D)
356+112.5 = P.I. Ed. PK Nail 39 To Surface		83.91' 59.60' 51.85' 43.76'	N.E. To Skinner in 17" Box Elder (D) N.W. To Skinner in P.P. (D) S.E. To Skinner in End Guard Post (D) S.W. To Skinner in 7th Guard Post (D)

