

O.D.O.T. DISTRICT 2 SURVEY OFFICE

PERSONNEL _____

REFERENCE NO. 40

SHEET 47 OF 68

NOTES HUSS

H.C. VAN DUSEN

DATE 6-5-97

ROUTE U.S. 24

R.C. LOERKE

WEATHER FAIR

COUNTY LUCAS

~~PA~~ C. COX

TEMP. +70°F

TOWNSHIP PROVIDENCE

SECTION 24

T. 6 N. R. 9 E.

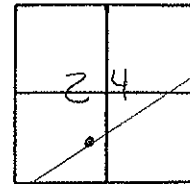
TYPE MONUMENT P.K. NAIL/W

ON SURFACE - ~~BELOW~~ ON

LEFT - ~~C PAV'T.~~ RIGHT 8.8'

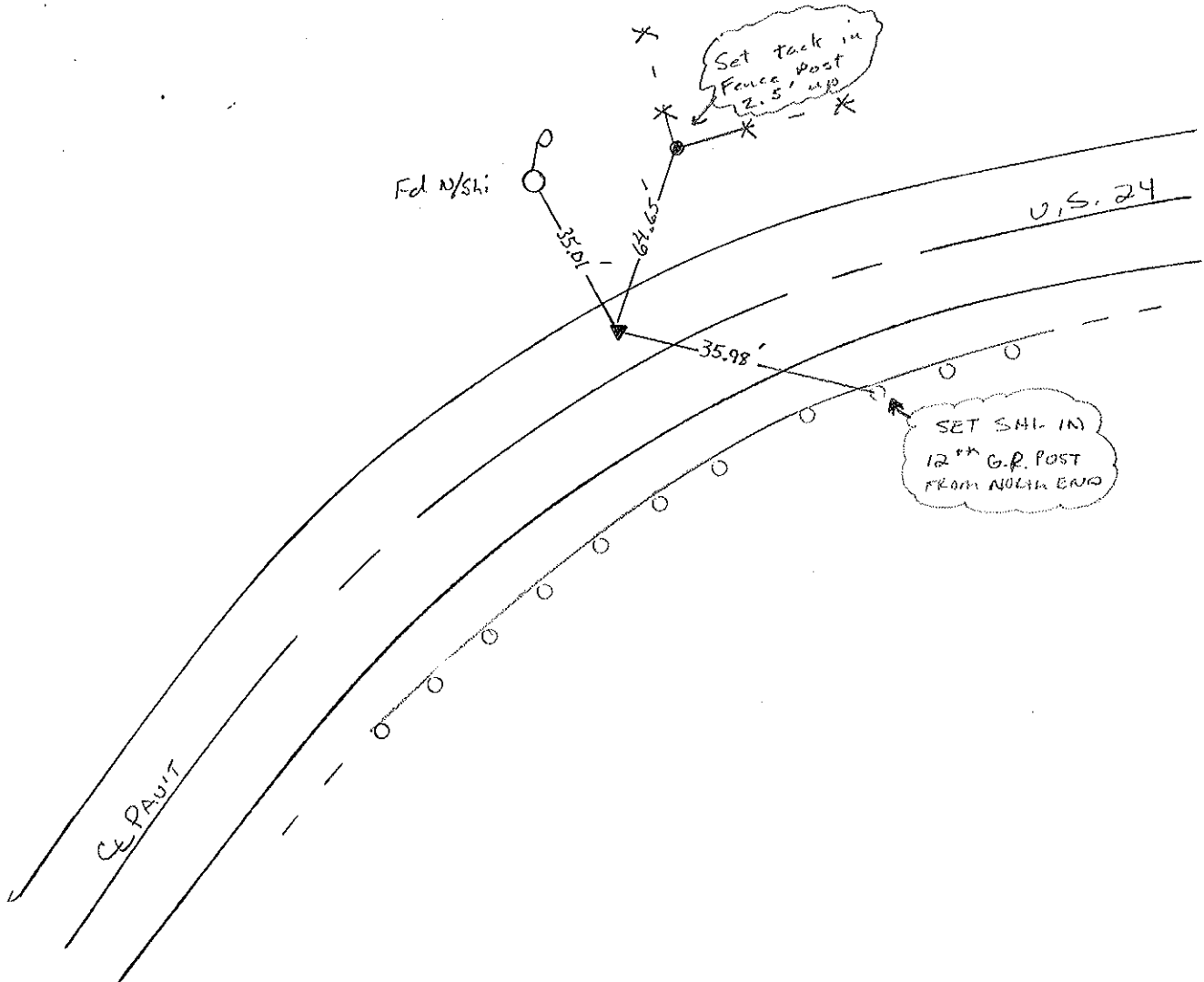
3.2' TO LT EDGE PAVEMENT

S.L.M. 362 + 66



RECORDS STA. 363 + 28.04 = P.I.
PLAN STA.

Set PK/W
10-22-97
SMH



QD.O.T. DISTRICT 2 SURVEY OFFICE

Sht. 16 of

County Lucas S.R. US #24

Township Providence

Section 24

T N, R E

Personnel L. Stone

R. Michalak

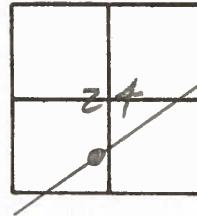
D. Curtis

40

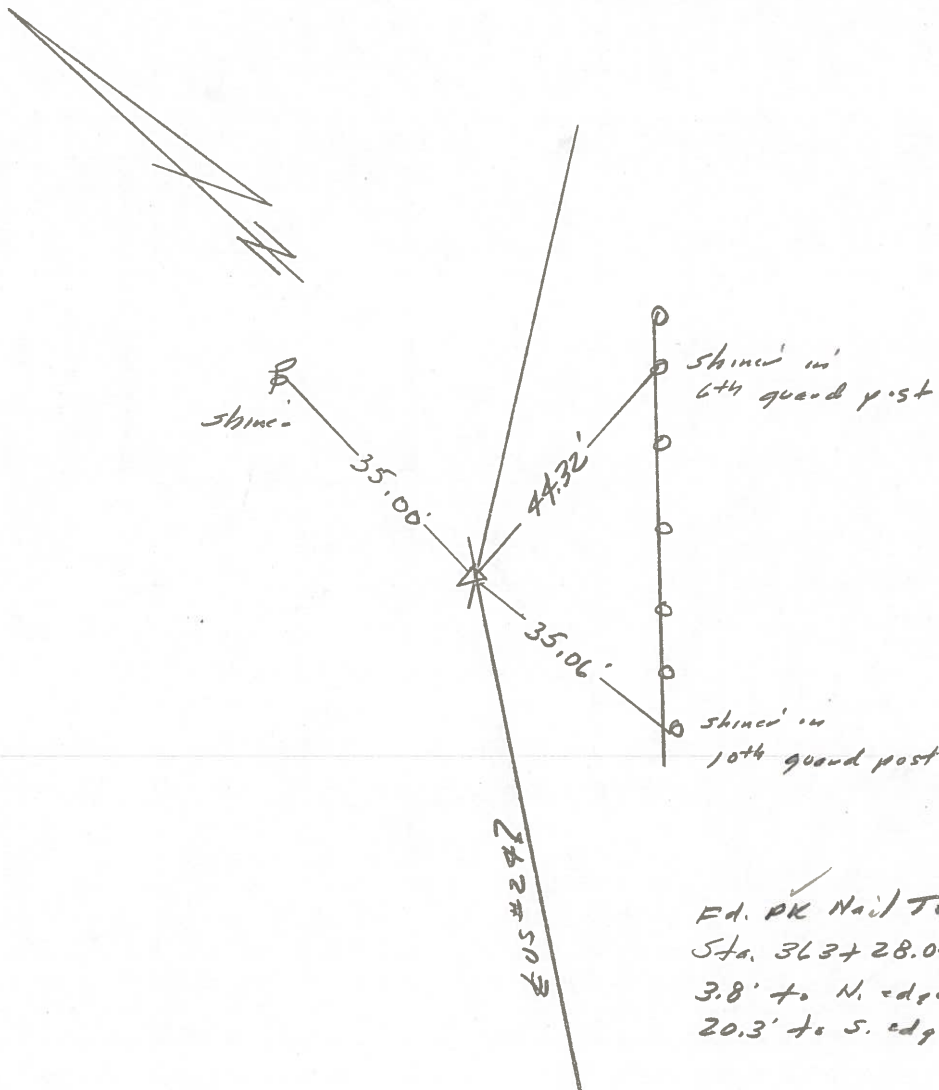
Date 23 July 1980 OK-9-5-80 G.W.S.

Weather Wet

Temp. 79°



Ref. No. 4240

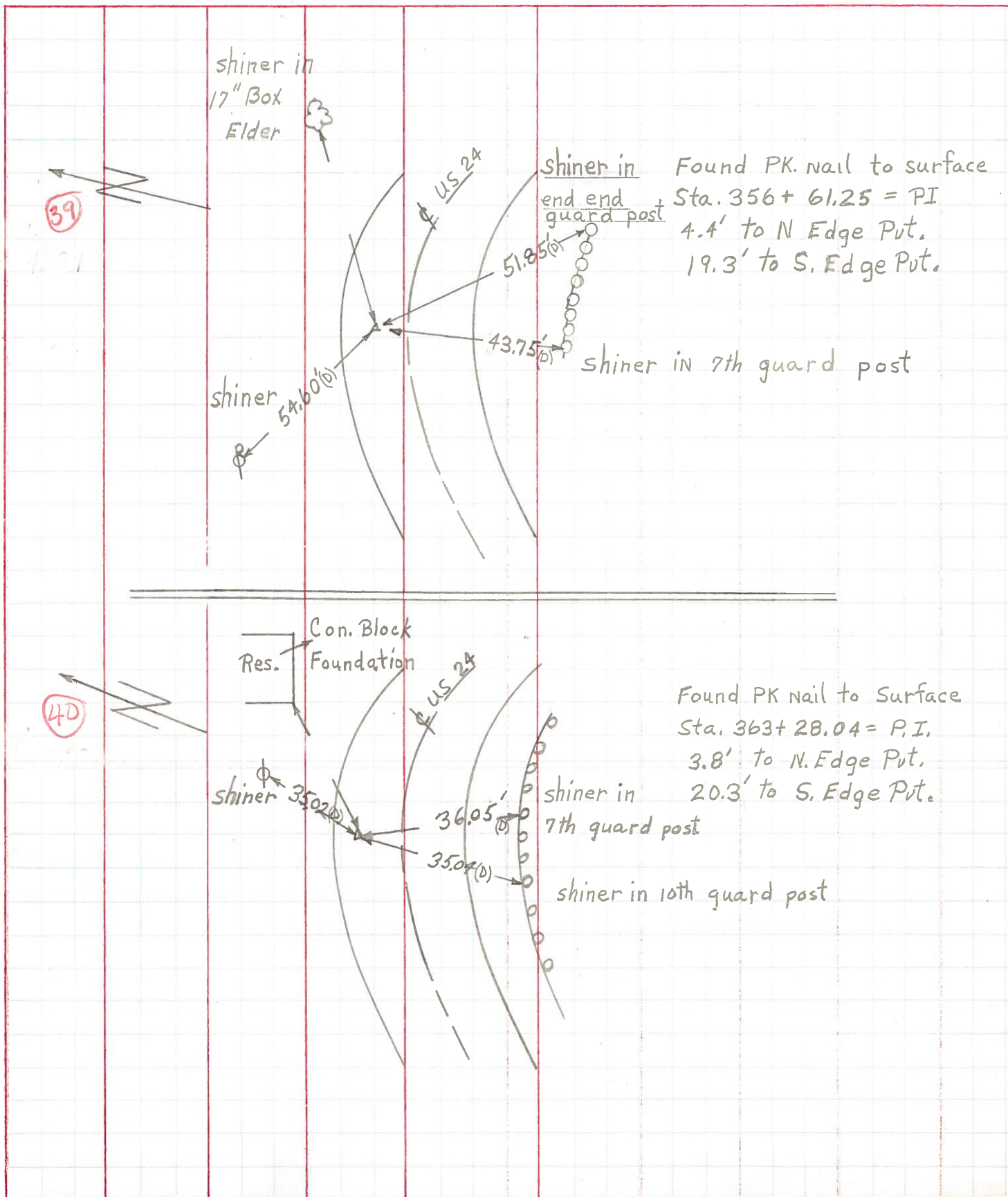


Ed. PK Nail To Surface
Sta. 363+28.04 = P.I.
3.8' to N. edge post.
20.3' to S. edge post.

PERSONNEL TITLE PERSONNEL TITLE
 W. Denno _____
 D. Curtis _____
 R. Engel _____

COUNTY Lucas DATE April 30, 1977
 S. R. U.S. # 24 WEATHER Mild
 SEC. _____ TEMP. 47°

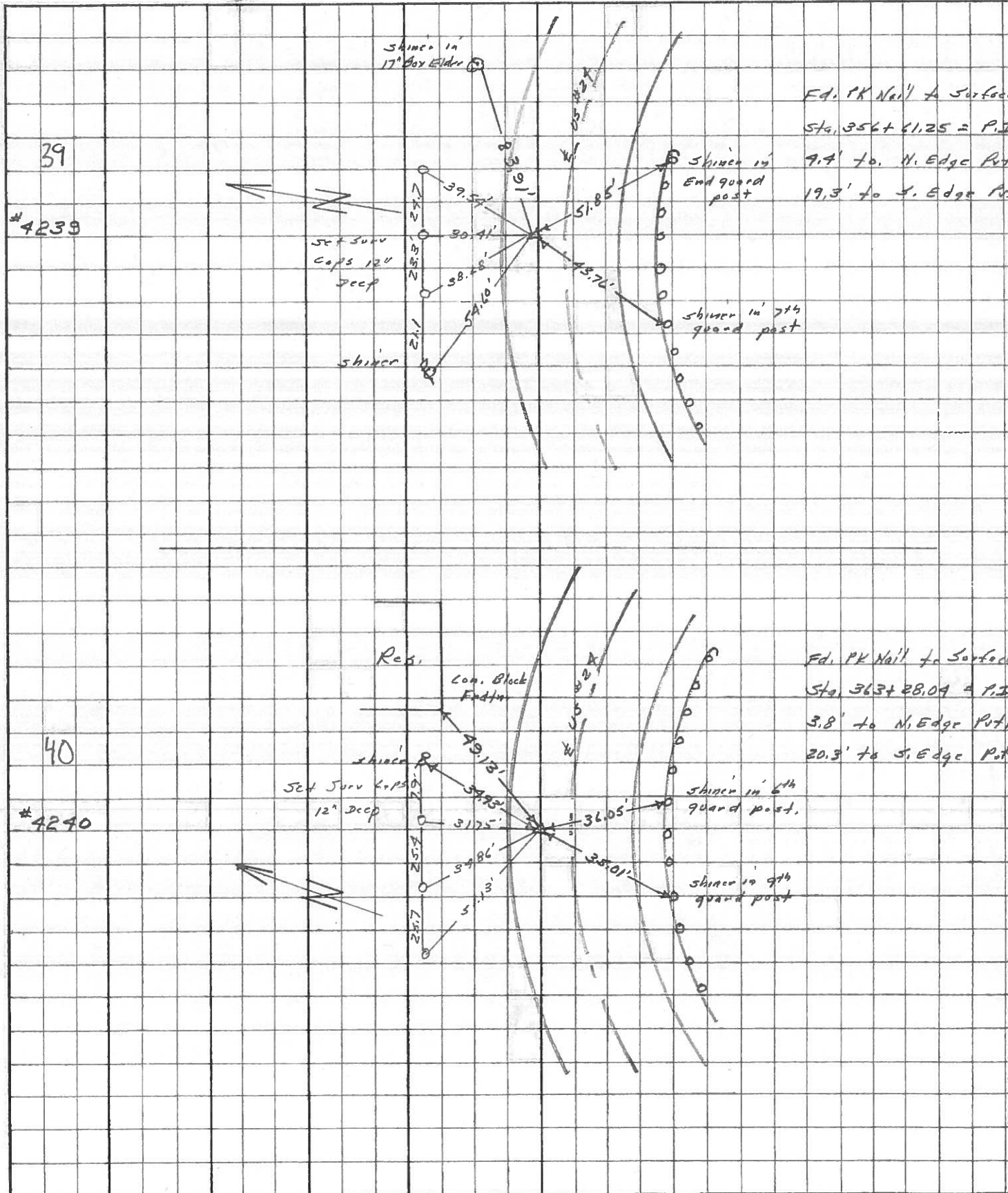
DESCRIPTION References to Control Points LEFT CENTER LINE RIGHT JOB NO.



PERSONNEL	TITLE	PERSONNEL	TITLE
Stowe	Notes		
Beck	Flag		
Michalek	Tape		
Schroder	Tape		

COUNTY Lucas DATE May 68
 S. R. #29 WEATHER Fair
 SEC. _____ TEMP. _____

DESCRIPTION References to Central Points JOB NO. _____
 LEFT CENTER LINE RIGHT



PERSONNEL Stone TITLE _____ PERSONNEL Schroder TITLE _____ COUNTY Lucas DATE 7 Feb. 66
Drano _____ _____ _____ _____ S. R. #24 WEATHER Cool
Beck _____ _____ _____ _____ SEC. _____ TEMP. 40°
Brindley _____ _____ _____ _____ DESCRIPTION Refs. To Control Points JOB NO. _____

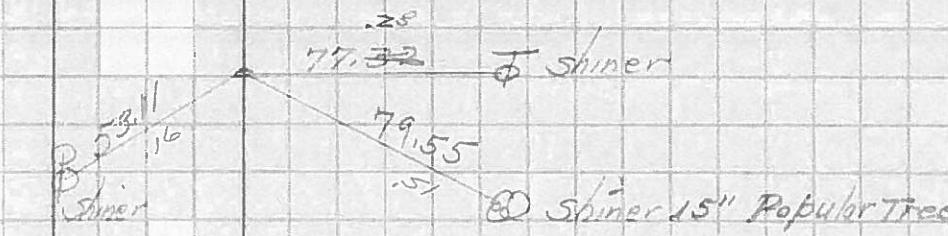
	LEFT	CENTER LINE	RIGHT
40	363+28.04 = P.I.	49.13'	N.E. To S.W. Cor. Con. Block Porch Fldg. (D)
	Ed. PK Nail	39.93'	N.N.E. To Shiner in P.P. (D)
	To Surface	36.05'	S.E. To Shiner in Guard Post (D)
		35.01'	S.W. To Shiner in Guard Post (D)
41	370+79.82 = P.I.	72.33'	S.E. To Shiner in T.P. (D)
	Ed. PK Nail	65.49'	S.W. To Shiner in 15" Sycamore (D)
	To Surface	61.80'	N.W. To Shiner in P.P. (D)
42	383+29.01 = P.I.	41.70'	N.E. To Shiner in P.P. (D)
	Ed. PK Nail	49.38'	S.S.E. To "T" on N.E. Cor. Con. Strip Slab (D)
	To Surface	40.61'	S.W. To Shiner in T.P. (D)
43	392+70.85 = P.I. (Howard Rd)	55.59'	N.E. To Shiner in P.P. (D)
	Ed. Small R.R. Jpk.	87.15'	N.N.W. To Shiner in P.P. (D)
	To Surface	62.36'	S.W. To Shiner in T.P. (D)
		68.82'	S.E. To Shiner in T.P. (D)
44	402+34.50 = P.I.	94.19'	N.W. To Shiner in P.P. (D)
	Ed. PK Nail	49.62'	S.E. To Shiner in T.P. (D)
	To Surface	38.22'	S. To Hercules Fence Post 2' Up (D)
		84.59'	S.W. To Hercules Fence Post 2' Up (D)
45	409+44.94 = P.I.	69.25'	N.E. To Shiner in 18" Box Elder (D)
	Ed. 1" I. Pin 6" off	46.92'	N.N.E. To Shiner in P.P. (D)
	S. Edge Pt. at Surface	50.89'	S.E. To Shiner in 15" Maple (D)
		30.74'	S. To Shiner in T.P. (D)

PERSONNEL	TITLE	PERSONNEL	TITLE	COUNTY	DATE
Silvester				Lucas	
#				S. R. #24	WEATHER
CREW				SEC. He-Luc.-Waterville	TEMP.
				(0.00)	

DESCRIPTION	LEFT	CENTER LINE	RIGHT	JOB NO.
-------------	------	-------------	-------	---------

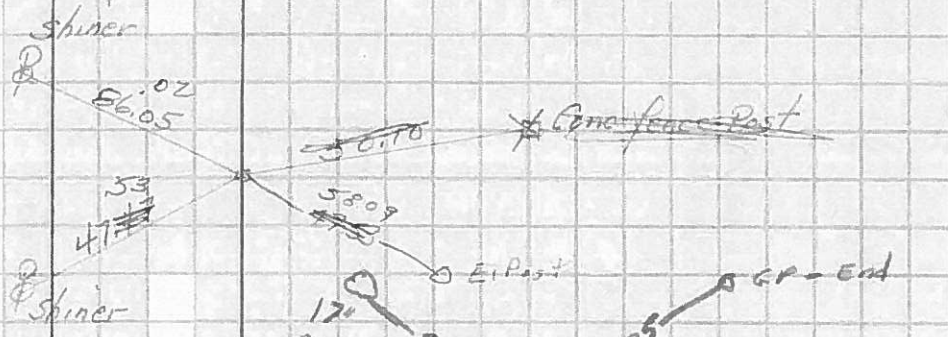
✓ P.I. Sta. 345+55.88
P.K. Nail set

37



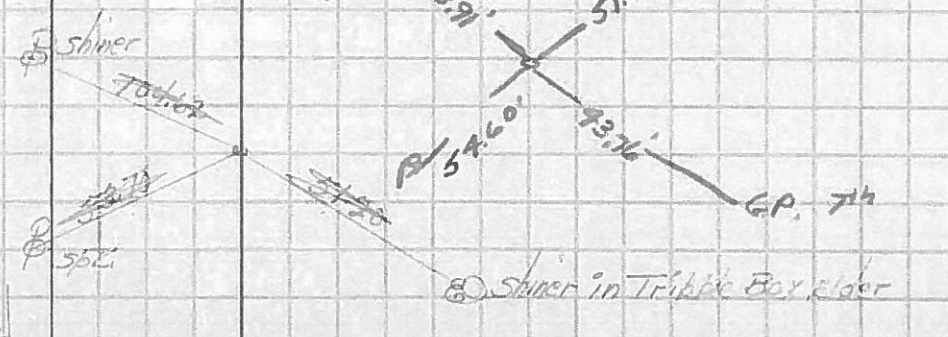
✓ P.I. Sta. 350+95.72
P.K. Nail set

38



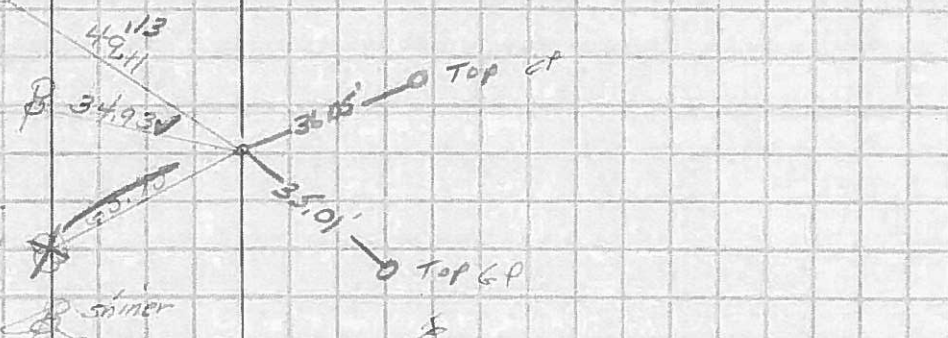
✓ P.I. Sta. 356+61.25
P.K. Nail set

39



✓ P.I. Sta. 363+28.04
P.K. Nail set

40



✓ P.I. Sta. 370+94.82
P.K. Nail set

41

