

O.D.O.T. DISTRICT 2 SURVEY OFFICE

PERSONNEL _____

REFERENCE NO. 41

SHEET 48 OF 68

NOTES HUSS

H.C. VANDUSEN

DATE 6-5-97

ROUTE U.S. 24

R.C. LOEHRKE

WEATHER FAIR

COUNTY LUCAS

A C. COX

TEMP. +70°F

TOWNSHIP PROVIDENCE

SECTION 24

T6 N R 9 E

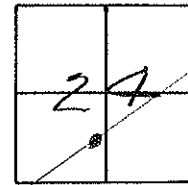
TYPE MONUMENT P.K. NAIL/W

ON SURFACE ~~BELOW~~ YES

LEFT- ϕ PAW'T. - RIGHT 2.8'

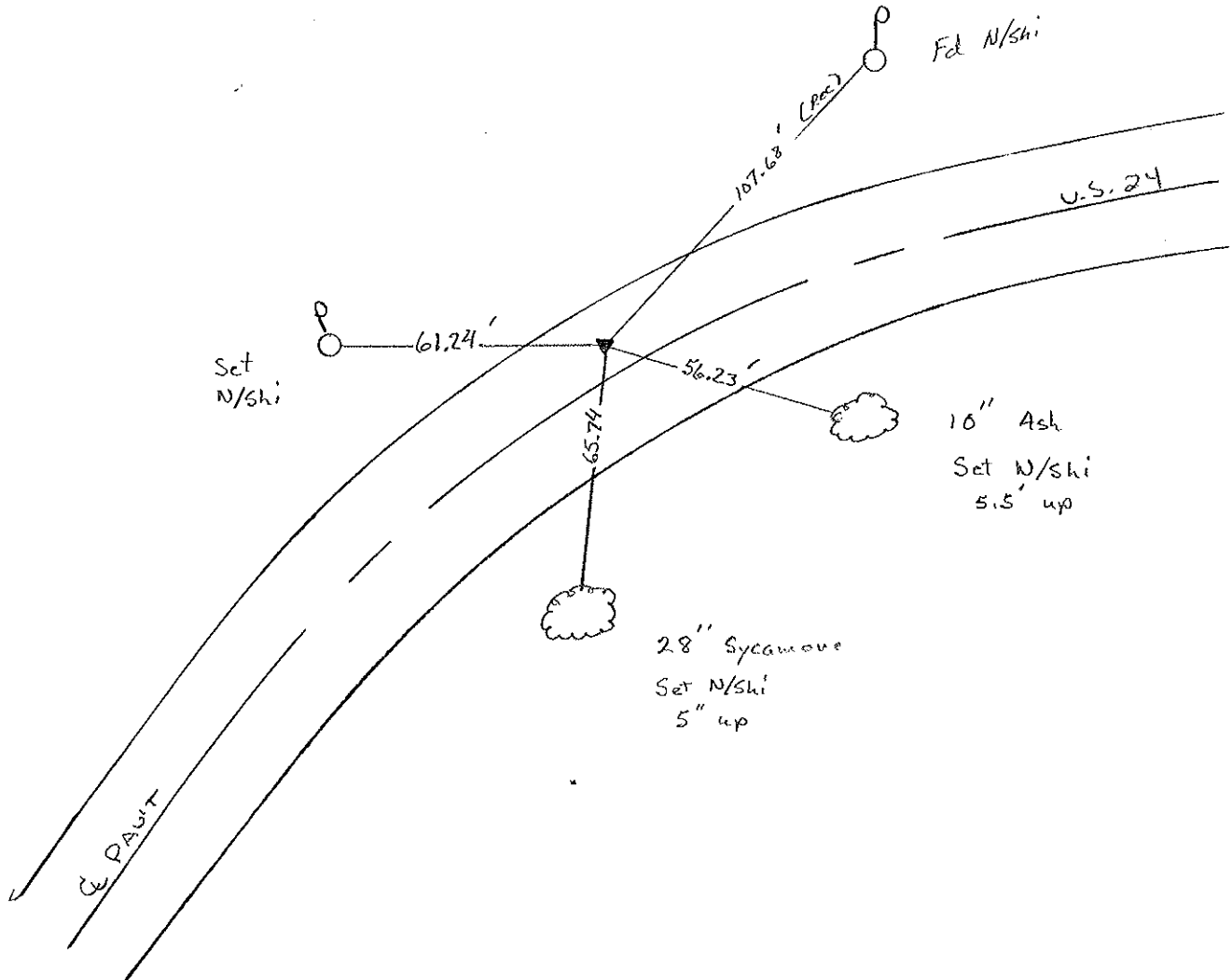
9.5' TO LT. EDGE PAVEMENT

S.L.M. 370 + 34



Previous P.I. PLAN STA. = 370 + 94.82

Set PK/W
10-22-97 SHH



ODOT. DISTRICT 2 SURVEY OFFICE

Sht. 42 of ___

County Lucas S.R. US #24

Township Providence

Section 24

T N, R E

Personnel I. Stone

R. Michalok

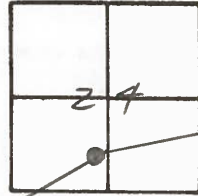
D. Curtis

41

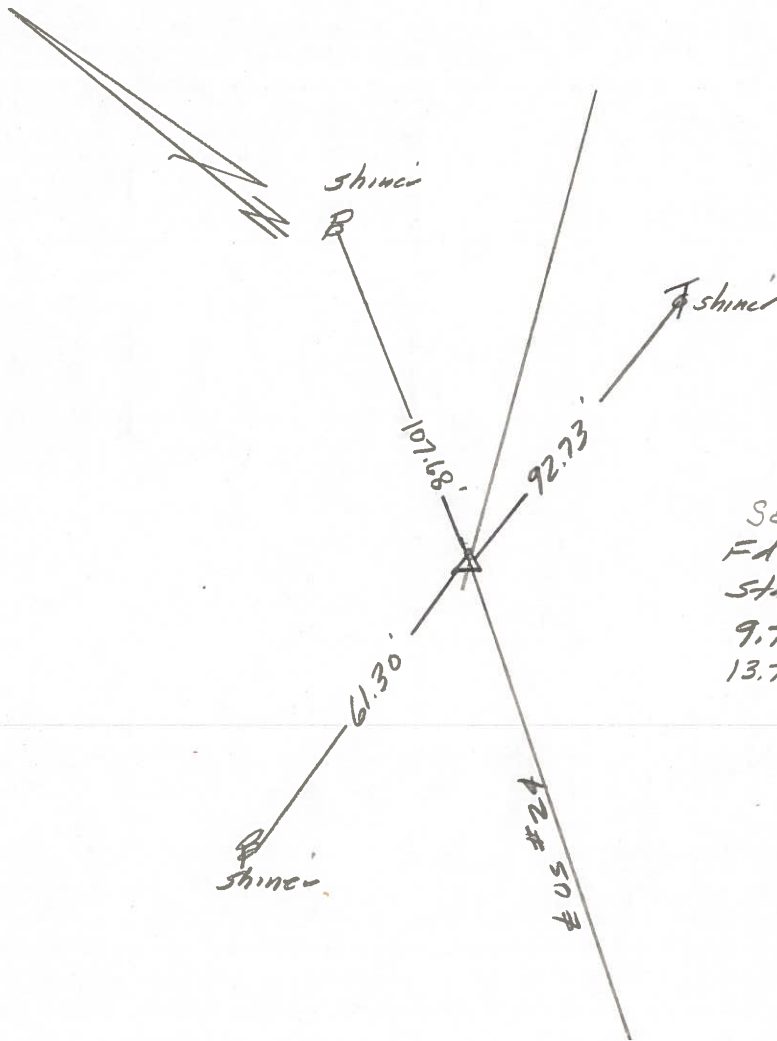
Date 23 July 1980 OK - 9-5-80 G.W.S.

Weather Woods

Temp. 79°



R.F. No. 4241



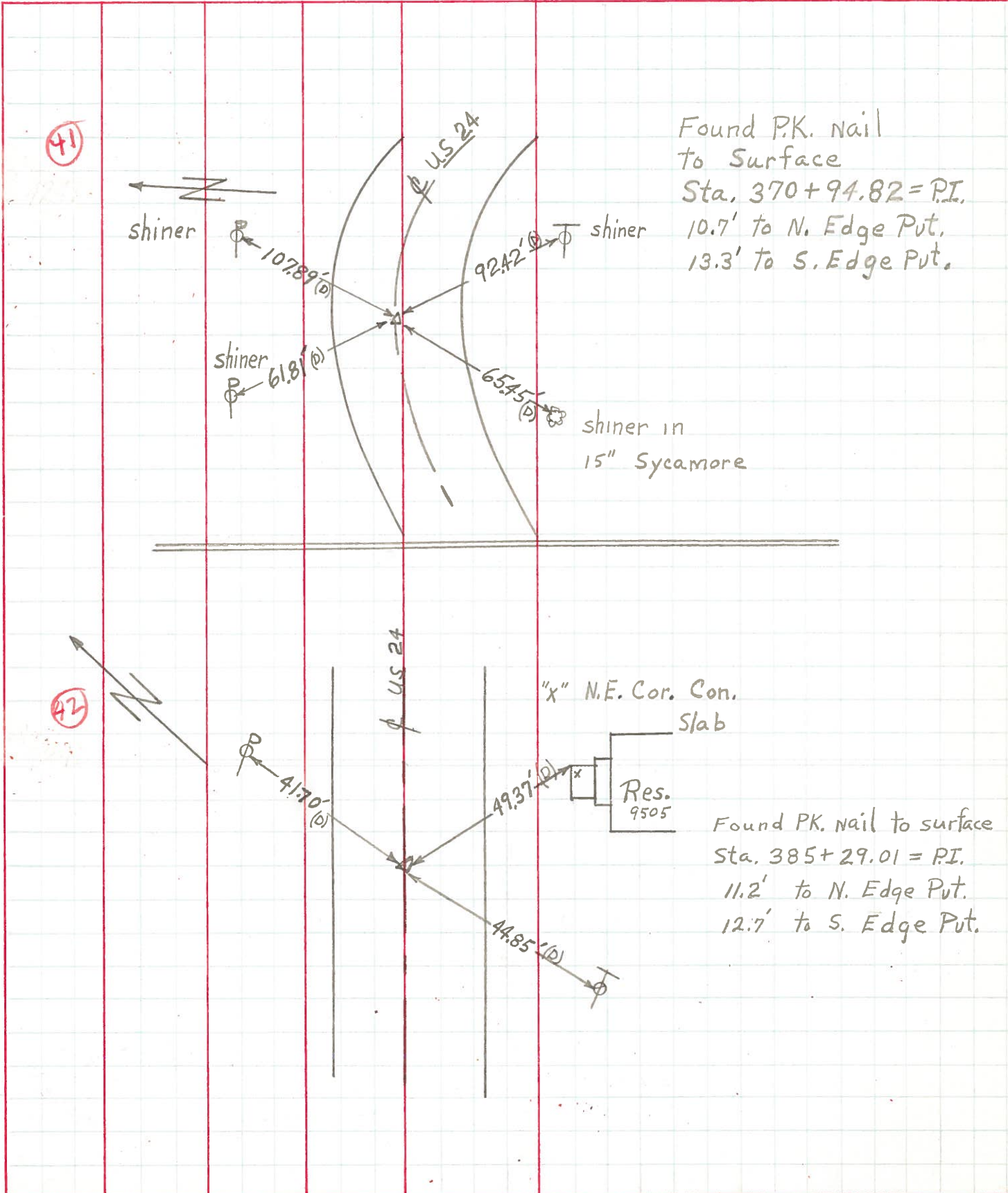
SET P.F. NAIL
Fd. RR Spk. to S. face
Sta. 370 + 94.82 = P.I.
9.7' to N. edge put.
13.7' to S. edge put.

PERSONNEL TITLE PERSONNEL TITLE
 W. Denno _____
 D. Curtis _____
 R. Engel _____

COUNTY Lucas DATE April 30, 19'
 S. R. U.S. # 24 WEATHER Mild
 SEC. _____ TEMP. 55°

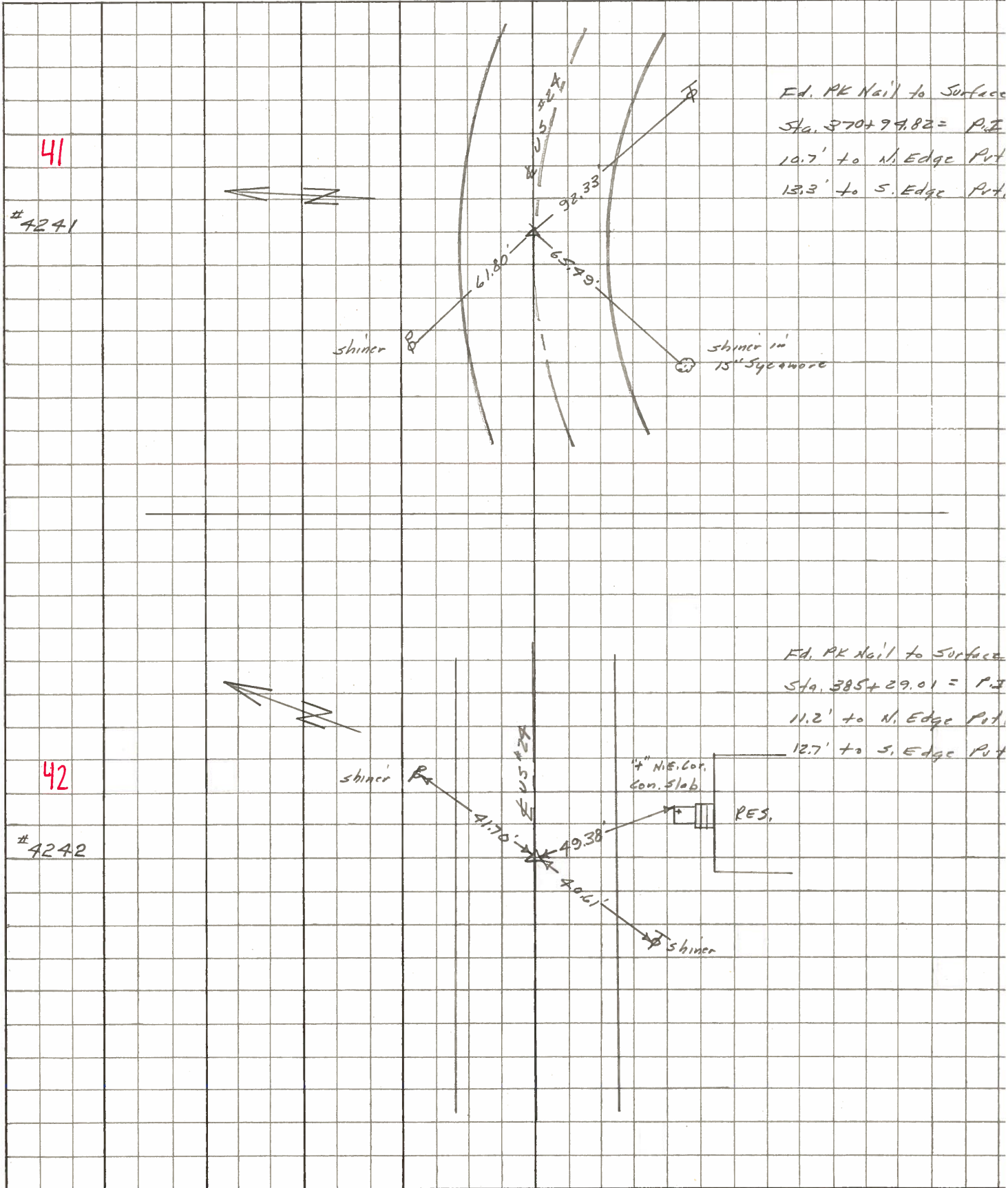
References to Control Points

DESCRIPTION LEFT CENTER LINE RIGHT JOB NO.



PERSONNEL	TITLE	PERSONNEL	TITLE	COUNTY	DATE
Stone	Notes			Lucas	May 68
Beck	Flag			S. R. #29	WEATHER Fair
Michalak	Tape			SEC.	TEMP.
Schroder	Tape				

DESCRIPTION References to Central Points JOB NO. _____



PERSONNEL Stone TITLE _____ PERSONNEL Schroeder TITLE _____ COUNTY Lucas DATE 7 Feb. 66
Drane _____ Beck _____ S. R. #29 WEATHER Cool
Brindley _____ SEC. _____ TEMP. 40°

DESCRIPTION _____ Refs. To Control Points JOB NO. _____
LEFT CENTER LINE RIGHT

DESCRIPTION	LEFT	CENTER LINE	RIGHT
363+28.09 = P.I.		49.13'	N.E. To S.W. Cor. Con. Block Porch Fdth. (D)
40	Fd. PK Nail	39.93'	N.W.E. To Shiner in P.P. (D)
	To Surface	36.05'	S.E. To Shiner in Guard Post (D)
		35.01'	S.W. To Shiner in Guard Post (D)
370+99.82 = P.I.		92.33'	S.E. To Shiner in T.P. (D)
41	Fd. PK Nail	65.99'	S.W. To Shiner in 15" Sycamore (D)
	To Surface	61.80'	N.W. To Shiner in P.P. (D)
385+29.01 = P.I.		41.70'	N.E. To Shiner in P.P. (D)
42	Fd. PK Nail	49.38'	S.S.E. To "4" on N.E. Cor. Con. Strip Slab (D)
	To Surface	40.61'	S.W. To Shiner in T.P. (D)
392+70.85 = P.I. (Howard Rv)		55.59'	N.E. To Shiner in P.P. (D)
43	Fd. Small R.R. Jpk.	87.15'	N.W.W. To Shiner in P.P. (D)
	To Surface	62.36'	S.W. To Shiner in T.P. (D)
		68.82'	S.E. To Shiner in T.P. (D)
402+34.50 = P.I.		94.19'	N.W. To Shiner in P.P. (D)
44	Fd. PK Nail	49.62'	S.E. To Shiner in T.P. (D)
	To Surface	38.22'	S. To Hercules Fence Post 2' Up (D)
		84.59'	S.W. To Hercules Fence Post 2' Up (D)
409+44.94 = P.I.		69.25'	N.E. To Shiner in 18" Box Elder (D)
45	Fd. 1" I. Pin 6" off	46.92'	N.W.E. To Shiner in P.P. (D)
	S. Edge Put. at Surface	50.89'	S.E. To Shiner in 15" Maple (D)
		30.74'	S. To Shiner in T.P. (D)

PERSONNEL	TITLE	PERSONNEL	TITLE	COUNTY	DATE
Silvester				Lucas	
#				# 24	
CREW					WEATHER
				SEC. He-Luc.-Waterville	TEMP.
				(0.00)	

DESCRIPTION	LEFT	CENTER LINE	RIGHT	JOB NO.
-------------	------	-------------	-------	---------

