

O.D.O.T. DISTRICT 2 SURVEY OFFICE

PERSONNEL

REFERENCE NO. 42

SHEET 49 OF 68

NOTES HUSS

H.C. VAN DUSEN

DATE 6-5-97

ROUTE U.S. 24

R.C. LOENKE

WEATHER SUNNY

COUNTY LUCAS

F C. COX

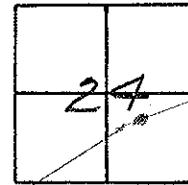
TEMP. +70°F

TOWNSHIP PROVIDENCE

SECTION 24

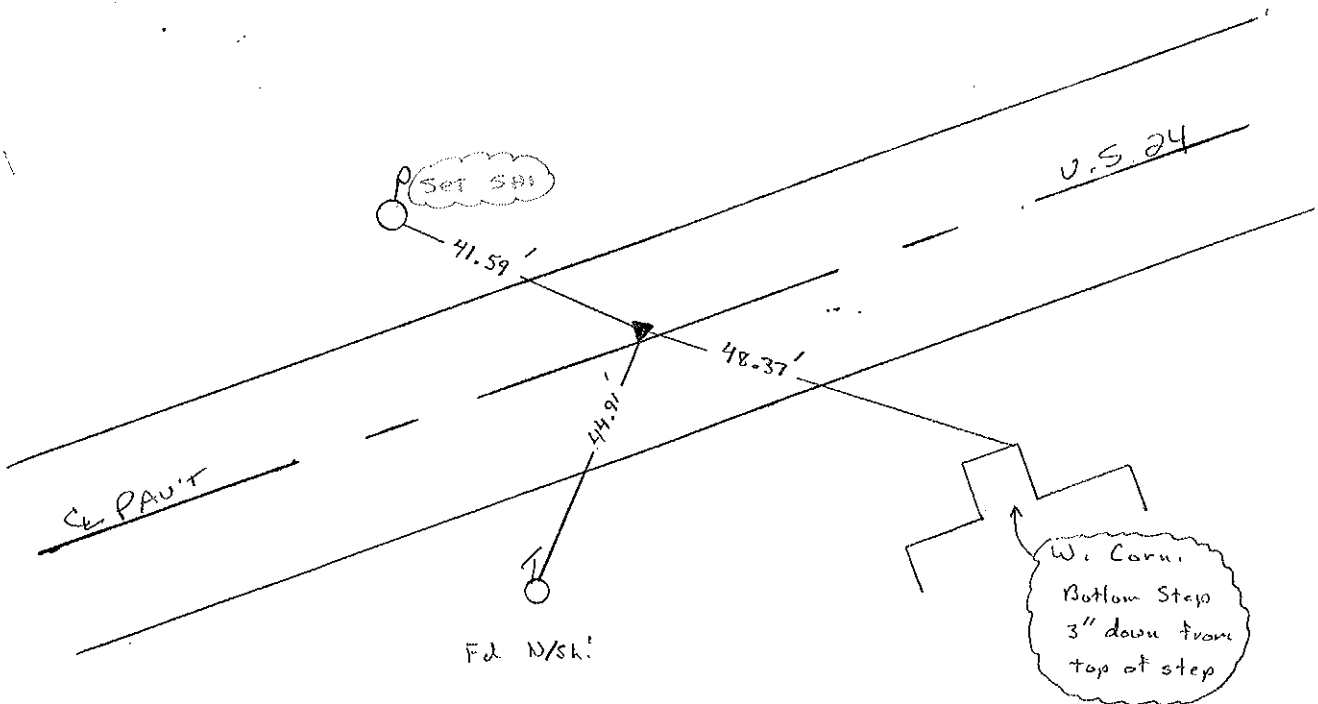
T 6 N R 9 E

TYPE MONUMENT P.K. NAIL/W
 ON SURFACE - BELOW
 LEFT - C. PAV'T. - RIGHT 0.3' Lt.
11.2 TO LT. EDGE PAVEMENT
 S.L.M. 384+72



Record: P.I. PLAN STA. = 385+29.01

Set PK/W
10-22-97 SAH



Q.D.O.T. DISTRICT 2 SURVEY OFFICE

Sht. 48 of

County Lucas SR. US #24

Township Providence

Section 24

T N, R E

Personnel I. Stone

R. Richalok

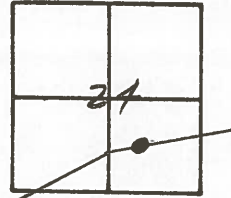
D. Curtis

42

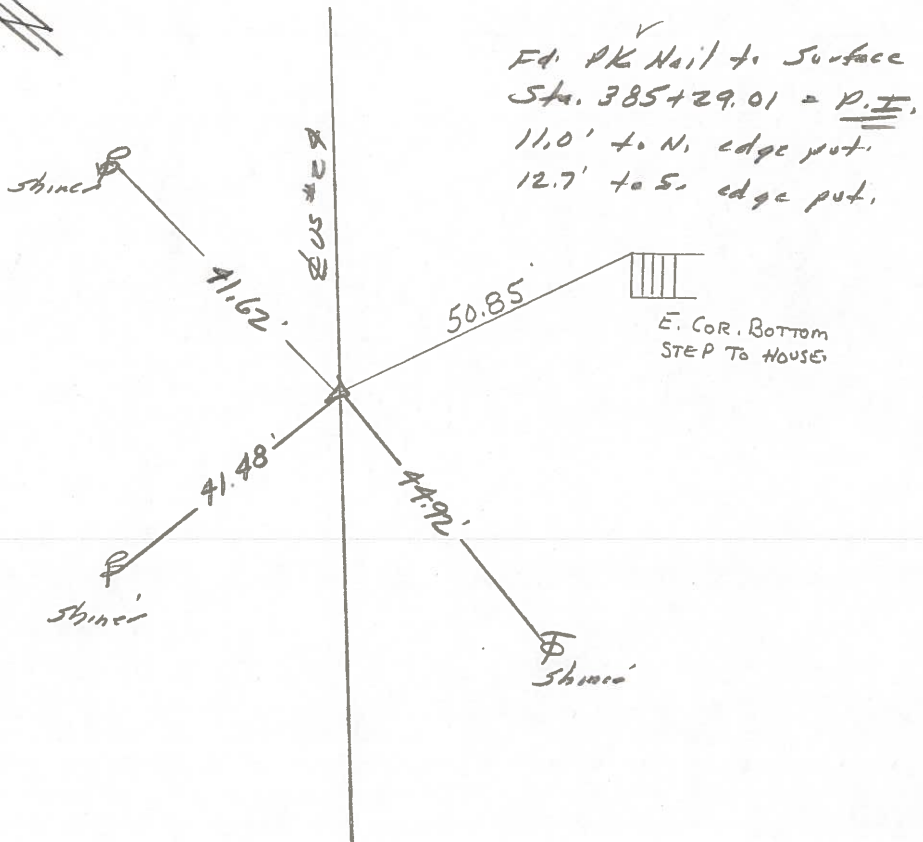
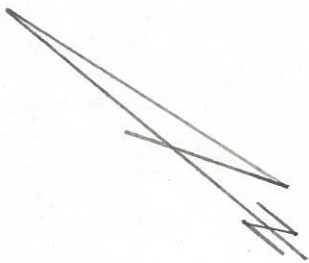
Date 23 July 1980 OK-9-5-80 G.W.S.

Weather Windy

Temp. 79°



Ref. No. 4242

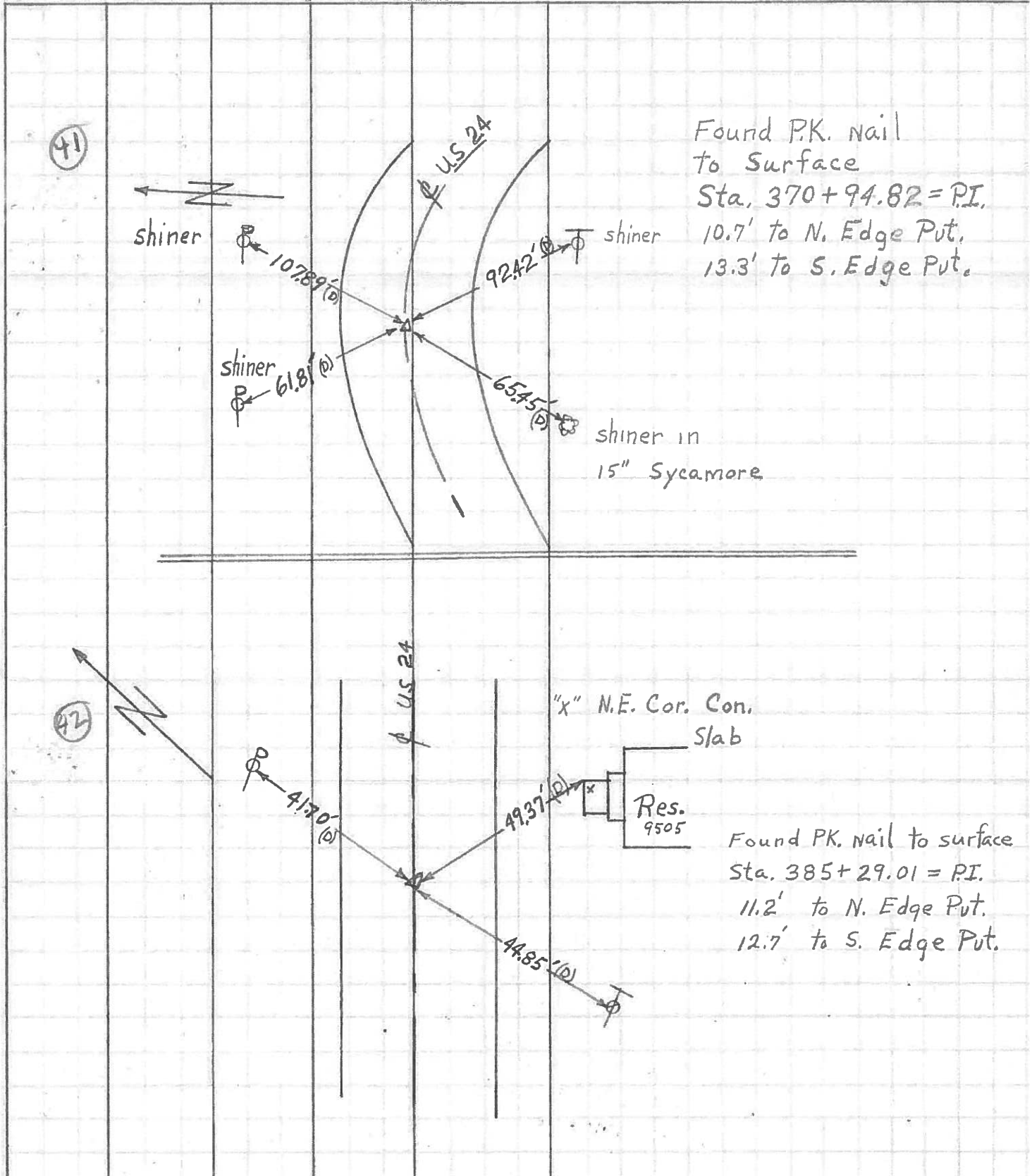


PERSONNEL	TITLE	PERSONNEL	TITLE
<u>W. Denno</u>			
<u>D. Curtis</u>			
<u>P. Engel</u>			

COUNTY Lucas DATE April 30, 19
 S. R. U.S. # 24 WEATHER Mild
 SEC. _____ TEMP. 55°

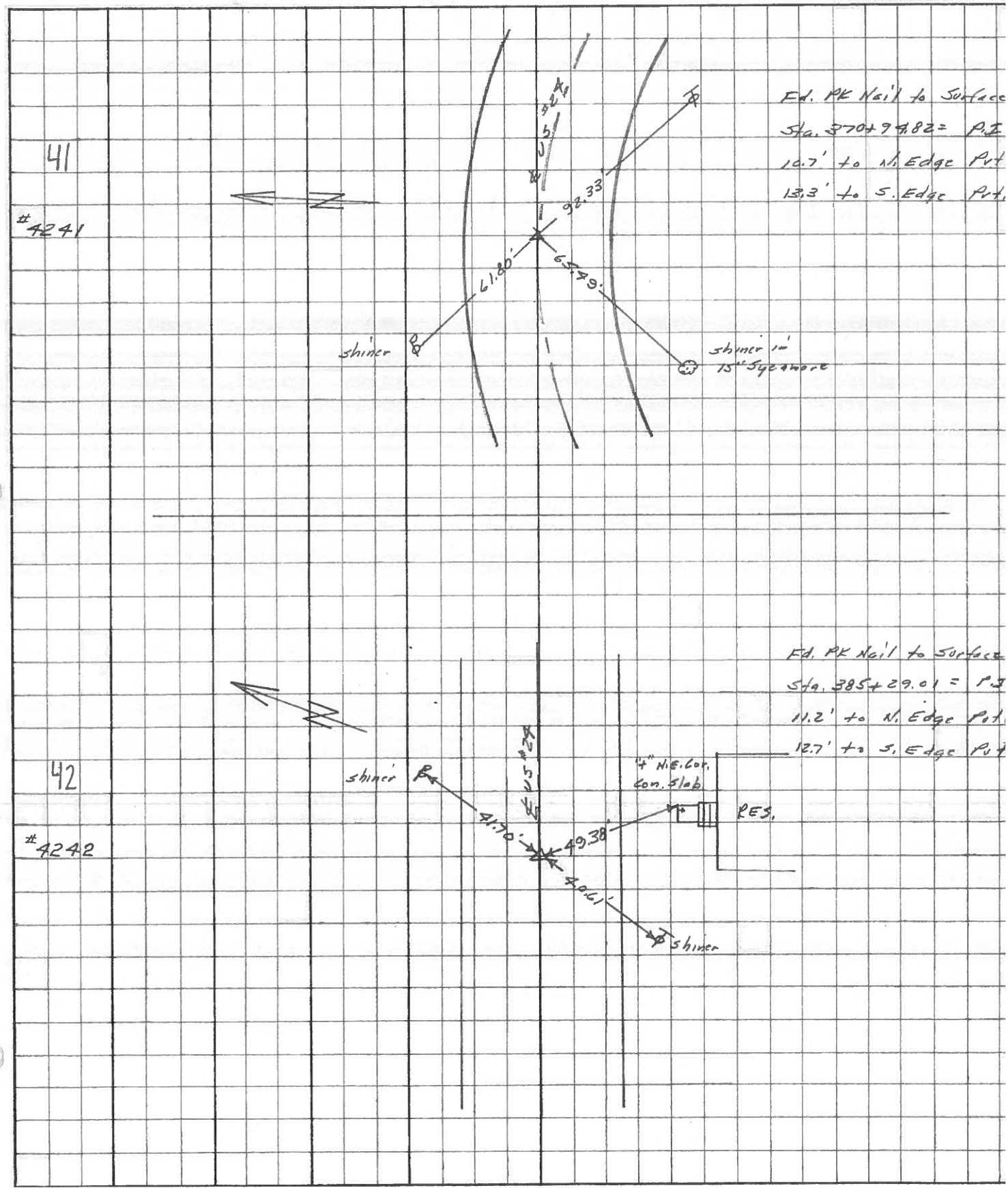
References to Control Points

DESCRIPTION _____ LEFT _____ CENTER LINE _____ RIGHT _____ JOB NO. _____



PERSONNEL	TITLE	PERSONNEL	TITLE	COUNTY	DATE
Stone	Notes			Lucas	May 68
Beck	Flag			S. R. #29	WEATHER Fair
Michalak	Tape			SEC.	TEMP.
Schroder	Tape				

DESCRIPTION References to Central Points JOB NO. _____



PERSONNEL	TITLE	PERSONNEL	TITLE	COUNTY	Lucas	DATE	7 Feb. 66
Stone		Schroeder		S. R.	#24	WEATHER	Cool
Drans				SEC.		TEMP.	40°
Beck							
Brindley							

Rpts. To Control Points

DESCRIPTION _____ LEFT _____ CENTER LINE _____ RIGHT _____ JOB NO. _____

DESCRIPTION	LEFT	CENTER LINE	RIGHT
363+28.04 = P.I.		49.13'	N.E. To S.W. Cor. Con. Block Patch Fdty. (D)
40	Fd. PK Nail	39.93'	N.W.E. To Shiner in P.P. (D)
	To Surface	36.05'	S.E. To Shiner in Guard Post (D)
		35.01'	S.W. To Shiner in Guard Post (D)
370+99.82 = P.I.		78.33'	S.E. To Shiner in T.P. (D)
41	Fd. PK Nail	65.49'	S.W. To Shiner in 15" Sycamore (D)
	To Surface	61.80'	N.W. To Shiner in P.P. (D)
385+29.01 = P.I.		41.70'	N.E. To Shiner in P.P. (D)
42	Fd. PK Nail	49.38'	S.S.E. To "t" on N.E. Cor. Con. Stop Slab (D)
	To Surface	40.61'	S.W. To Shiner in T.P. (D)
392+70.85 = P.I. (Howard Rt)		55.59'	N.E. To Shiner in P.P. (D)
43	Fd. Small RR Jpk.	87.15'	N.W.W. To Shiner in P.P. (D)
	To Surface	62.76'	S.W. To Shiner in T.P. (D)
		68.82'	S.E. To Shiner in T.P. (D)
402+34.50 = P.I.		94.19'	N.W. To Shiner in P.P. (D)
44	Fd. PK Nail	49.62'	S.E. To Shiner in T.P. (D)
	To Surface	38.22'	S. To Hercules Fence Post 2' Up (D)
		84.59'	S.W. To Hercules Fence Post 2' Up (D)
409+44.94 = P.I.		69.25'	N.E. To Shiner in 18" Box Elder (D)
45	Fd. 1" I. Pin 6" off	46.92'	N.W.E. To Shiner in P.P. (D)
	S. Edge Pkt. at Surface	50.89'	S.E. To Shiner in 15" Maple (D)
		30.74'	S. To Shiner in T.P. (D)

PERSONNEL TITLE PERSONNEL TITLE
 Silvester _____
 # _____
 crew _____

COUNTY Lucas DATE 1958
 S. R. #24 WEATHER _____
 SEC. He-Luc-Waterville TEMP. _____
 (0.00)

DESCRIPTION LEFT CENTER LINE RIGHT JOB NO.

