

# O.D.O.T. DISTRICT 2 SURVEY OFFICE

PERSONNEL

REFERENCE NO. 43

SHEET 50 OF 68

NOTES HUSS

H.C. VANDUSEN

R.C. LDENRKE

F C. COX

DATE 6-5-97

WEATHER FAIR

TEMP. +70°F

ROUTE U.S. 24

COUNTY LUCAS

TOWNSHIP PROVIDENCE

SECTION 24

T. 6 N. R. 10 E.

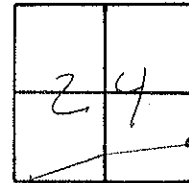
TYPE MONUMENT PK NAIL/W

ON SURFACE - ~~BELOW~~ YES

~~LEFT - & PAV'T.~~ - ~~RIGHT~~ YES

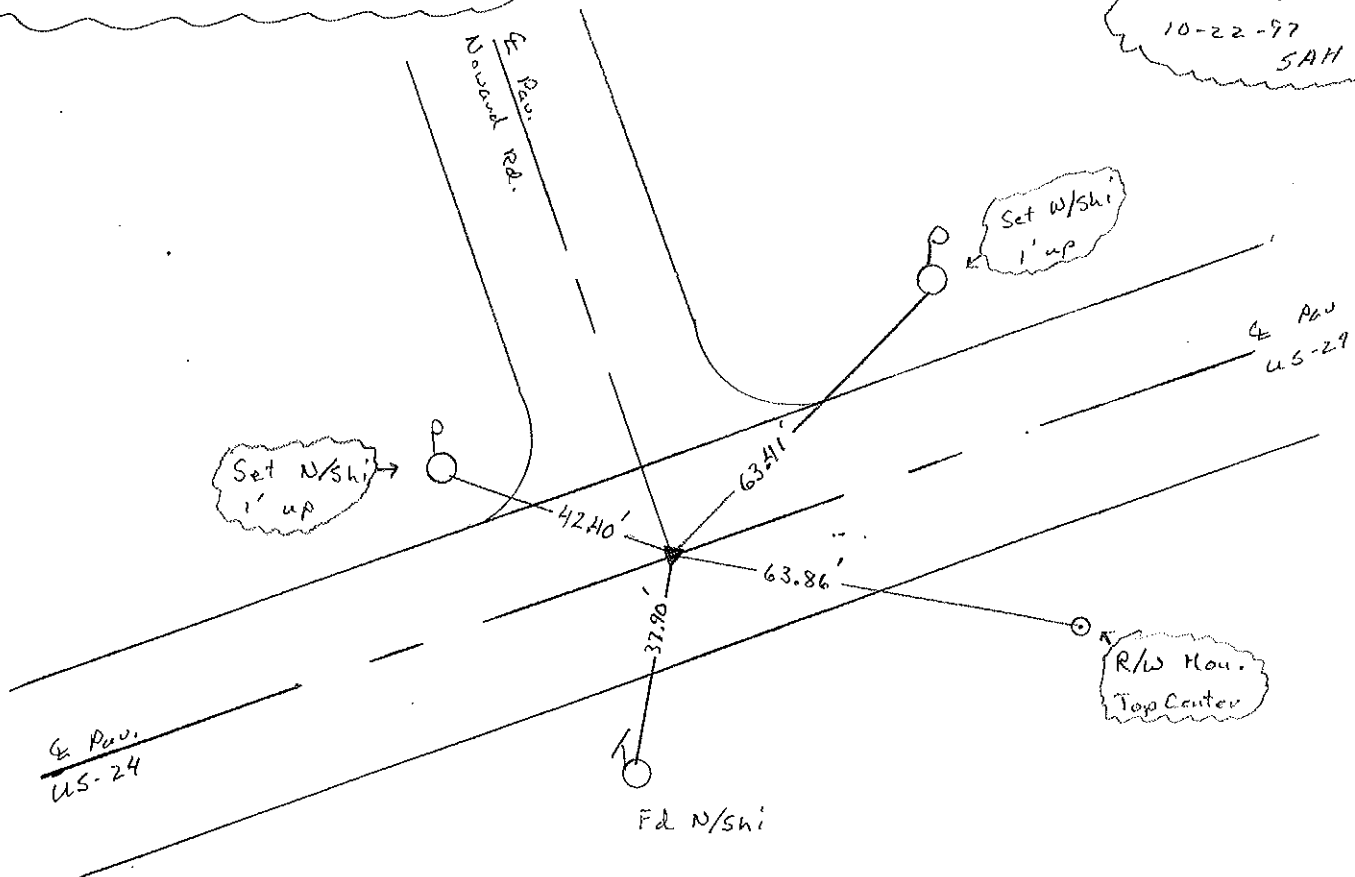
1/4 TO RT EDGE PAVEMENT

S.L.M. 392 + 17



Record: P.I. PLAN STA = 392 + 70.85

Set PK/W  
10-22-97  
SAH



Q.D.O.T. DISTRICT 2 SURVEY OFFICE

Sht. 49 of \_\_\_\_\_

County Lucas S.R. US#24

Township Providence

Section 24

T    N, R    E

Personnel I. Stone

R. Michalala

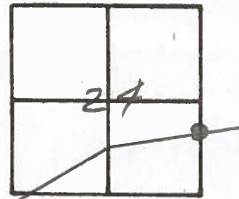
D. Curtis

43

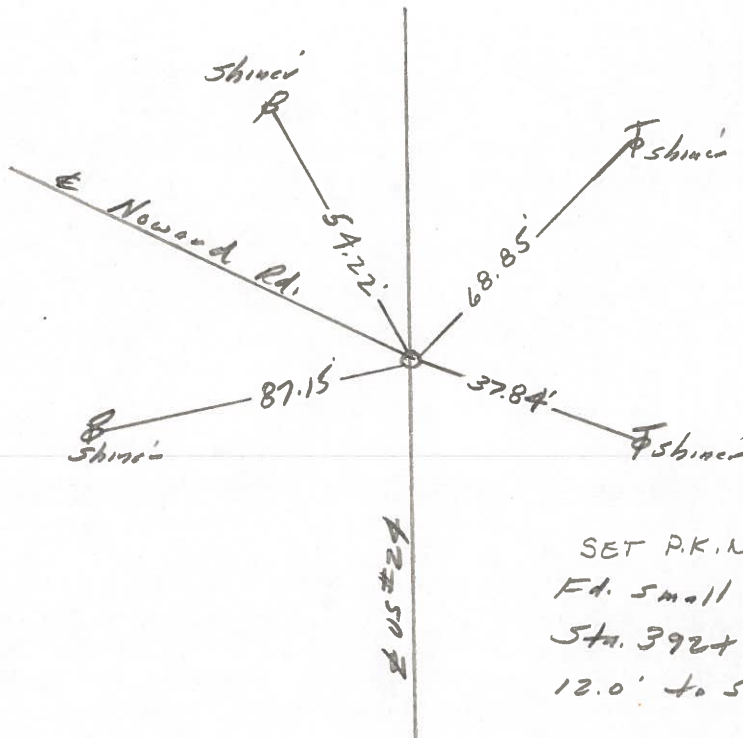
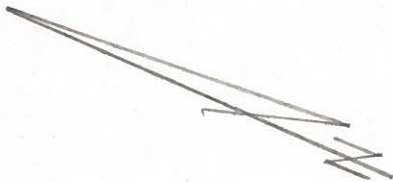
Date OK-9-5-80 G.W.S.  
23 July 1980

Weather Warm

Temp. 79°



Ref. No. 4243



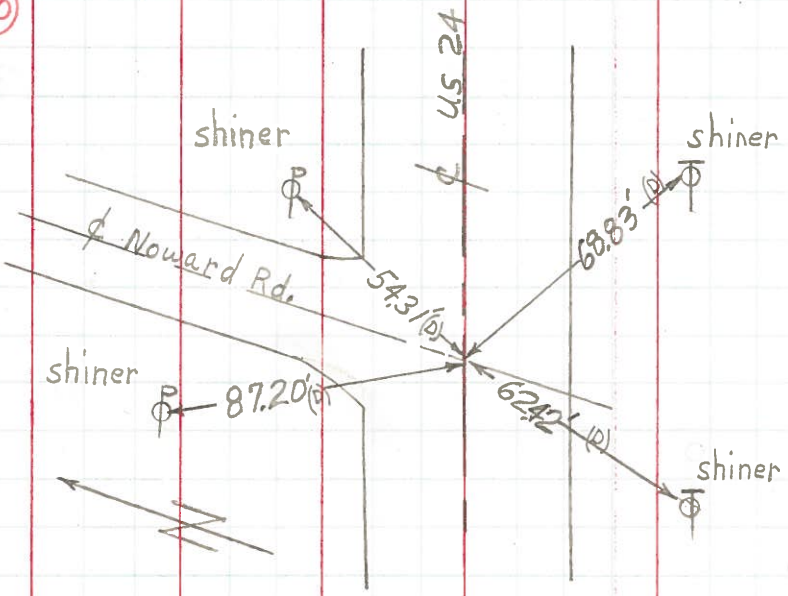
SET P.K. NAIL  
Fd. small Spk. 1" deep  
Sta. 392 + 70.85 = P.I.  
12.0' to S. edge pit.

PERSONNEL	TITLE	PERSONNEL	TITLE
W. Denno			
D. Curtis			
R. Engel			

COUNTY Lucas DATE April 30, 1977  
 S. R. U.S. # 24 WEATHER Mild  
 SEC. TEMP. 55°

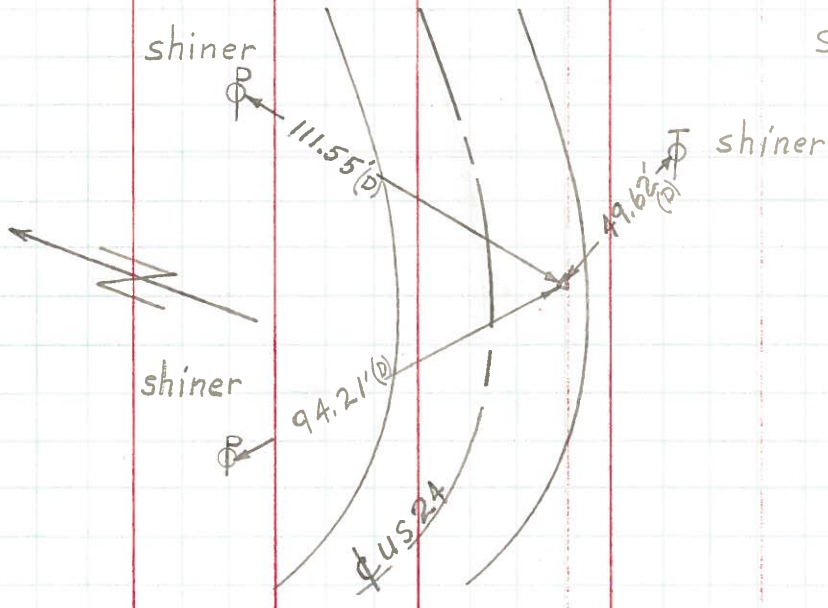
DESCRIPTION Reference to Control Points LEFT CENTER LINE RIGHT JOB NO.

43



Found small R.R. spike to Surface  
 Sta. 392 + 70.85 = P.I.  
 Noward Rd.  
 11.8' to S. Edge Pvt.

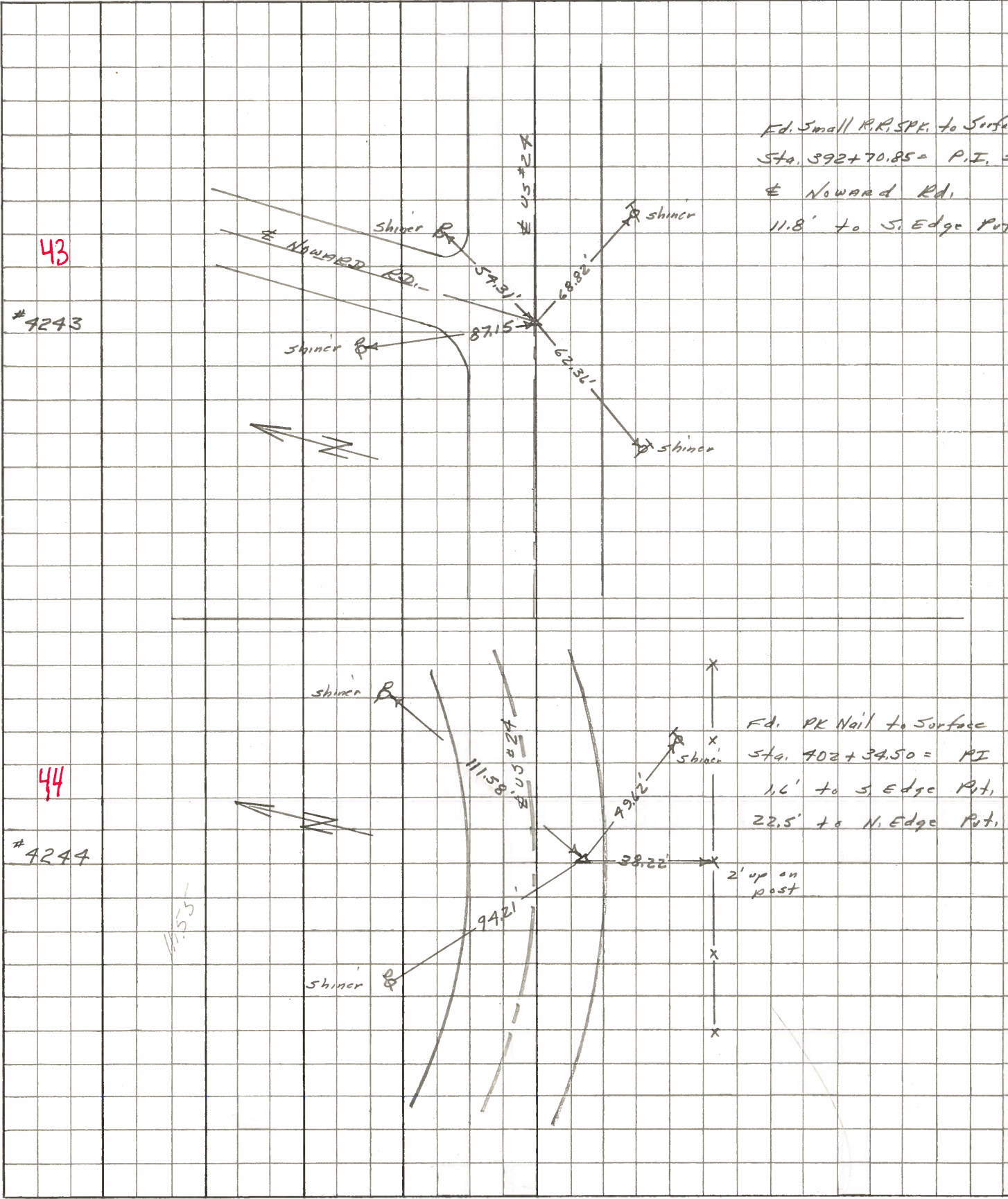
44



Found P.K. nail to Surface  
 Sta. 402 + 34.50 = P.I.  
 1.6' to S. Edge Pvt.

PERSONNEL	TITLE	PERSONNEL	TITLE	COUNTY	DATE
<u>Stone</u>	<u>Notes</u>			<u>Lucas</u>	<u>May 68</u>
<u>Beck</u>	<u>Flag</u>			S. R. <u>#29</u>	WEATHER <u>Fair</u>
<u>Michalak</u>	<u>Tape</u>			SEC. _____	TEMP. _____
<u>Schroder</u>	<u>Tape</u>				

DESCRIPTION References to Central Points JOB NO. \_\_\_\_\_  
 LEFT CENTER LINE RIGHT



PERSONNEL Stone TITLE \_\_\_\_\_ PERSONNEL Schroeder TITLE \_\_\_\_\_ COUNTY Lucas DATE 7 Feb. 66  
Draper \_\_\_\_\_ S. R. #24 WEATHER Cool  
Beck \_\_\_\_\_ SEC. \_\_\_\_\_ TEMP. 40°  
Brindley \_\_\_\_\_

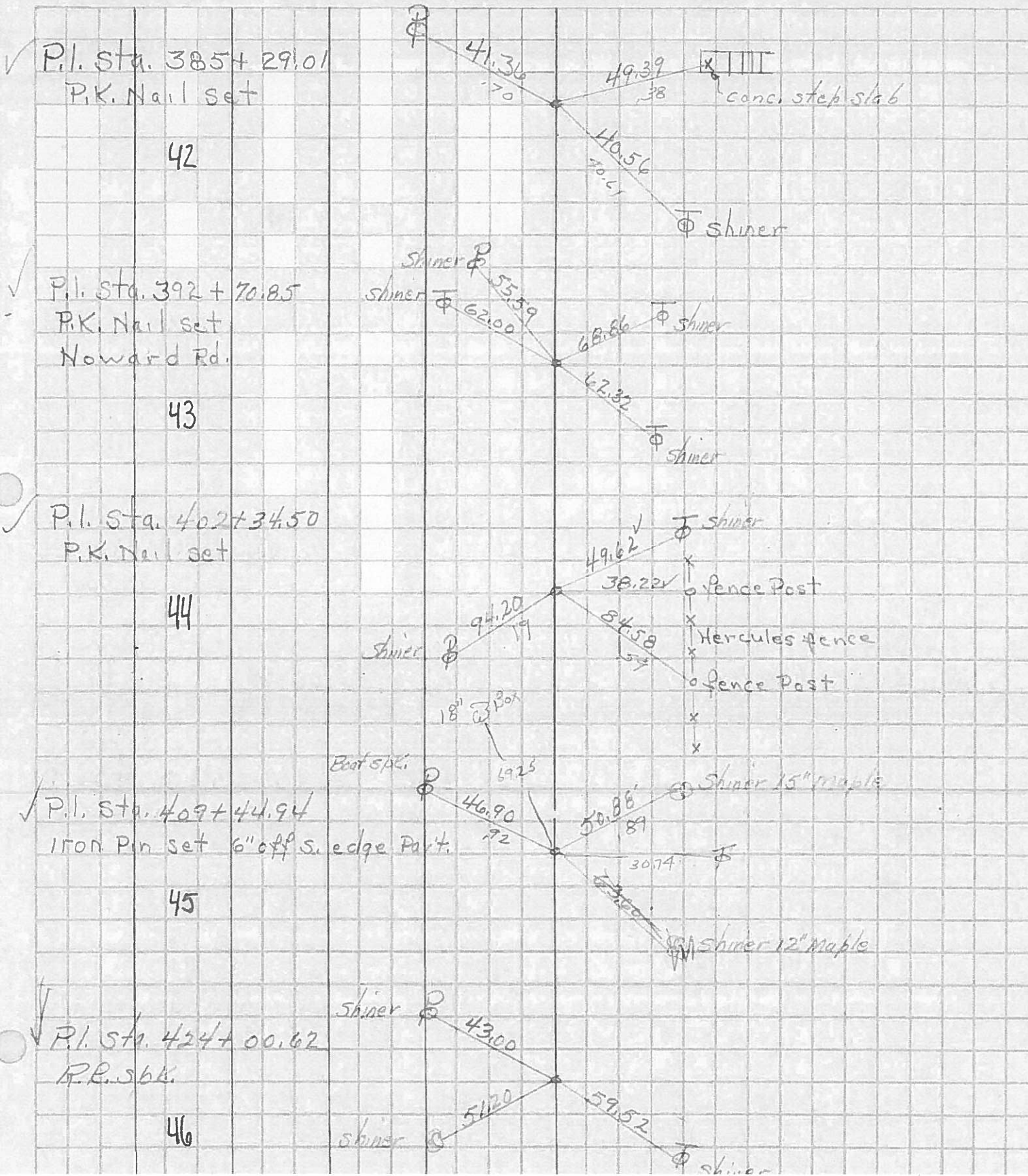
DESCRIPTION \_\_\_\_\_ Refs. To Control Points JOB NO. \_\_\_\_\_  
LEFT CENTER LINE RIGHT

DESCRIPTION	LEFT	CENTER LINE	RIGHT
363+28.04 = P.I. 40 Ed. PK Nail To Surface		49.13' 34.93' 36.05' 35.01'	N.E. To S.W. Cor. Con. Block Porch Fdho. (D) N.N.E. To Shiner in P.P. (D) S.E. To Shiner in Guard Post (D) S.W. To Shiner in Guard Post (D)
370+74.82 = P.I. 41 Ed. PK Nail To Surface		78.33' 65.49' 61.80'	S.E. To Shiner in T.P. (D) S.W. To Shiner in 15' Sycamore (D) N.W. To Shiner in P.P. (D)
385+29.01 = P.I. 42 Ed. PK Nail To Surface		41.70' 49.38' 40.61'	N.E. To Shiner in P.P. (D) S.S.E. To "t" on N.E. Cor. Con. Stop Slab (D) S.W. To Shiner in T.P. (D)
392+70.85 = P.I. (Howard Rt.) 43 Ed. Small RR Jct. To Surface		55.59' 87.15' 62.36' 68.82'	N.E. To Shiner in P.P. (D) N.N.W. To Shiner in P.P. (D) S.W. To Shiner in T.P. (D) S.E. To Shiner in T.P. (D)
402+34.50 = P.I. 44 Ed. PK Nail To Surface		94.19' 49.62' 38.22' 84.59'	N.W. To Shiner in P.P. (D) S.E. To Shiner in T.P. (D) S. To Hercules Fence Post 2' Up (D) S.W. To Hercules Fence Post 2' Up (D)
409+44.94 = P.I. 45 Ed. 1" I Pin 6" off S. Edge Pkt. of Surface		69.25' 46.92' 50.89' 30.74'	N.E. To Shiner in 18" Box Elder (D) N.N.E. To Shiner in P.P. (D) S.E. To Shiner in 15" Maple (D) S. To Shiner in T.P. (D)

PERSONNEL	TITLE	PERSONNEL	TITLE
Silvester			
#			
crew			

COUNTY Lucas DATE 1958  
 S. R. #24 WEATHER \_\_\_\_\_  
 SEC. He-Luc-Waterville TEMP. \_\_\_\_\_  
 (0.00)

DESCRIPTION \_\_\_\_\_ LEFT \_\_\_\_\_ CENTER LINE \_\_\_\_\_ RIGHT \_\_\_\_\_ JOB NO. \_\_\_\_\_



✓ P.I. Sta. 385+29.01  
P.K. Nail set

42

✓ P.I. Sta. 392+70.85  
P.K. Nail set  
Noward Rd.

43

✓ P.I. Sta. 402+34.50  
P.K. Nail set

44

✓ P.I. Sta. 409+44.94  
Iron Pin set 6" off s. edge Part.

45

✓ P.I. Sta. 424+00.62  
R.R. s.b.k.

46

PERSONNEL TITLE PERSONNEL TITLE

COUNTY Lucas DATE \_\_\_\_\_S. R. #24 WEATHER \_\_\_\_\_

SEC. \_\_\_\_\_ TEMP. \_\_\_\_\_

DESCRIPTION U.S. #24 Sec. I LEFT CENTER LINE RIGHT JOB NO. \_\_\_\_\_

#263 Sta. 270+91.78 P.I.

#264 Sta. 285+23.13 P.I.

#265 Sta. 292+60.65  $\Phi$  inter. Noward Rd. & S.R. #24

#266 Sta. 302+37.67 P.I.

#267 Sta. 309+41.0 P.I.

#268 Sta. 323+87.25 P.I.

#269 Sta. 336+58.20 P.I.

#270 Sta. 339+46.75  $\Phi$  inter. Neowash Rd. & S.R. #24

PERSONNEL TITLE PERSONNEL TITLE

COUNTY Lucas DATES. R. #24 WEATHER

SEC. TEMP.

DESCRIPTION U.S. #24 Sec. I LEFT CENTER LINE RIGHT JOB NO.

#263 Sta. 270+91.78 P.I.

#264 Sta. 285+23.13 P.I.

#265 Sta. 292+60.65  $\Phi$  inter. Noward Rd. & S.R. #24

#266 Sta. 302+37.67 P.I.

#267 Sta. 309+41.0 P.I.

#268 Sta. 323+87.25 P.I.

#269 Sta. 336+58.20 P.I.

#270 Sta. 339+46.75  $\Phi$  inter Neowash Rd. & S.R. #24