

# O.D.O.T. DISTRICT 2 SURVEY OFFICE

PERSONNEL

REFERENCE NO. 44

SHEET 51 OF 68

NOTES Huss

H.C. VANDUSEN

DATE 6-5-97

ROUTE U.S. 24

R.C. LOEHRKE

WEATHER FAIR

COUNTY LUCAS

F C. COX

TEMP. +70°F

TOWNSHIP PROVIDENCE

SECTION 19

T 6 N R 10 E

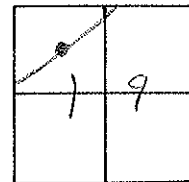
TYPE MONUMENT P.K. NAIL

ON SURFACE - ~~BLOW~~ ON

~~LEFT~~ C PAV'T. - RIGHT 1.3'

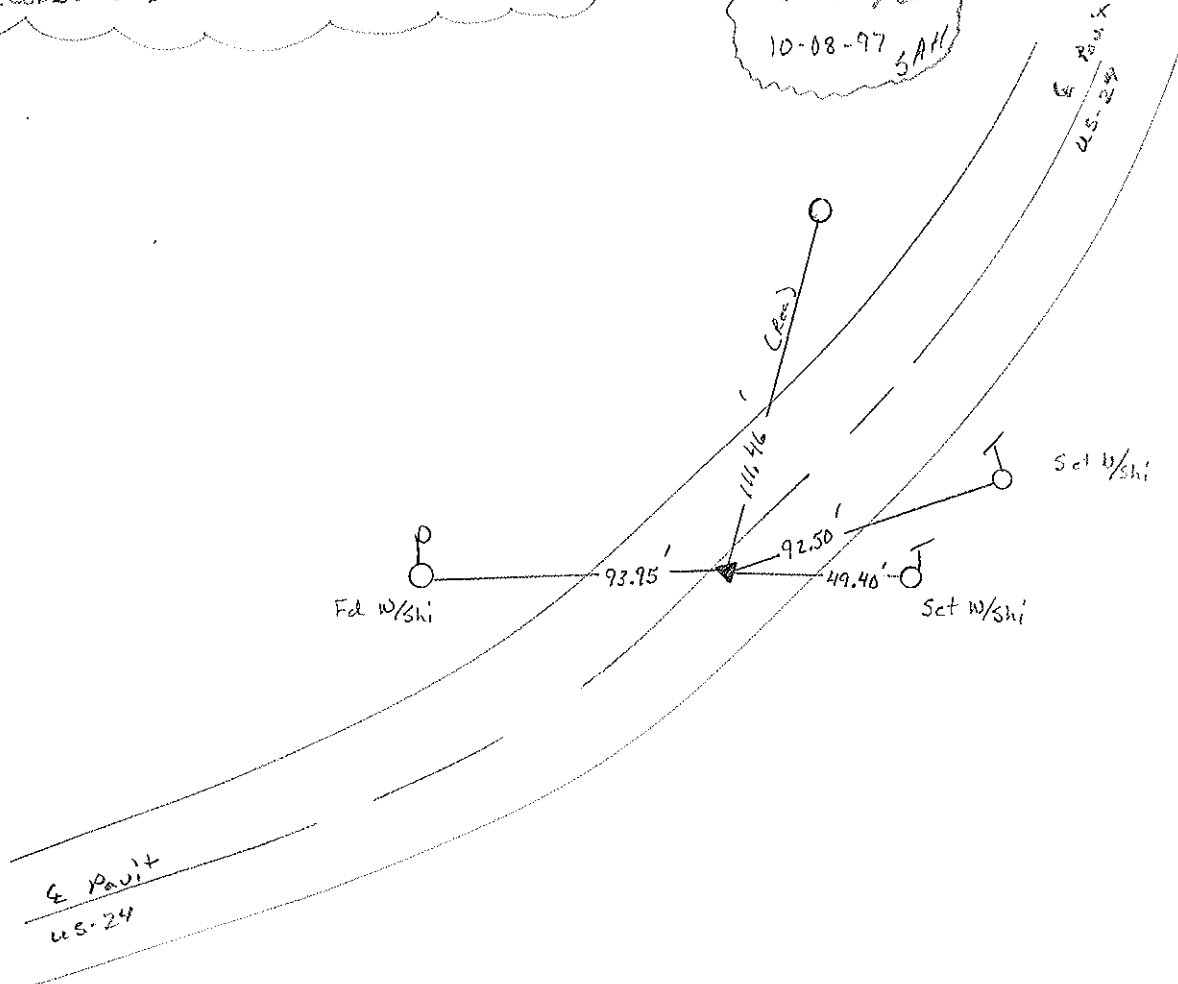
9.8' TO RT EDGE PAVEMENT

S.L.M. 401 +83



RECORD: P.I. PLAW STA. = 402+34.50

Set PK/W  
10-08-97  
SAH



ODOT. DISTRICT 2 SURVEY OFFICE

Sht. 50 of

County Lucas S.R. US#24

Township Providence

Section 19

T N, R E

Personnel J. Stone

R. Michalob

D. Curtis

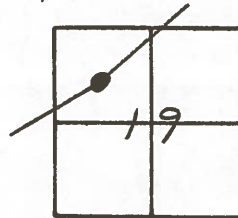
44

OK-9-5-80 G.W.S.

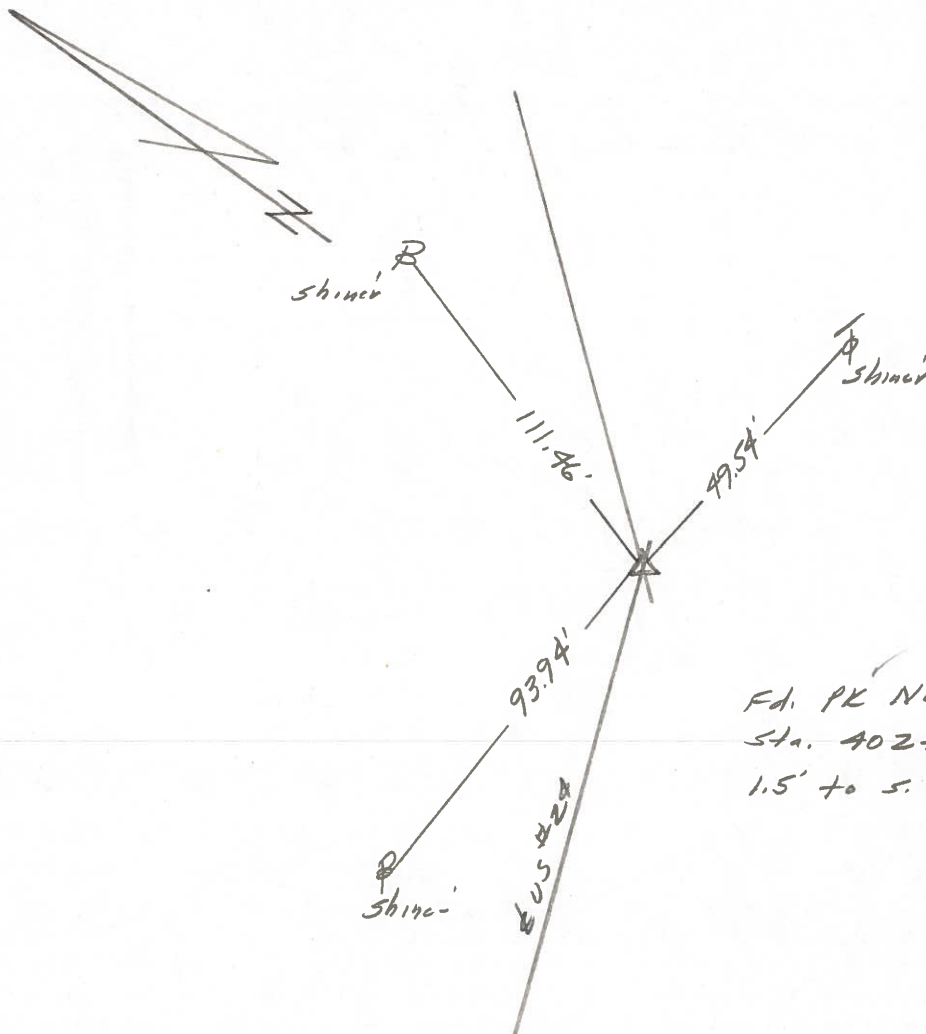
Date 23 July 1980

Weather Warm

Temp. 79°



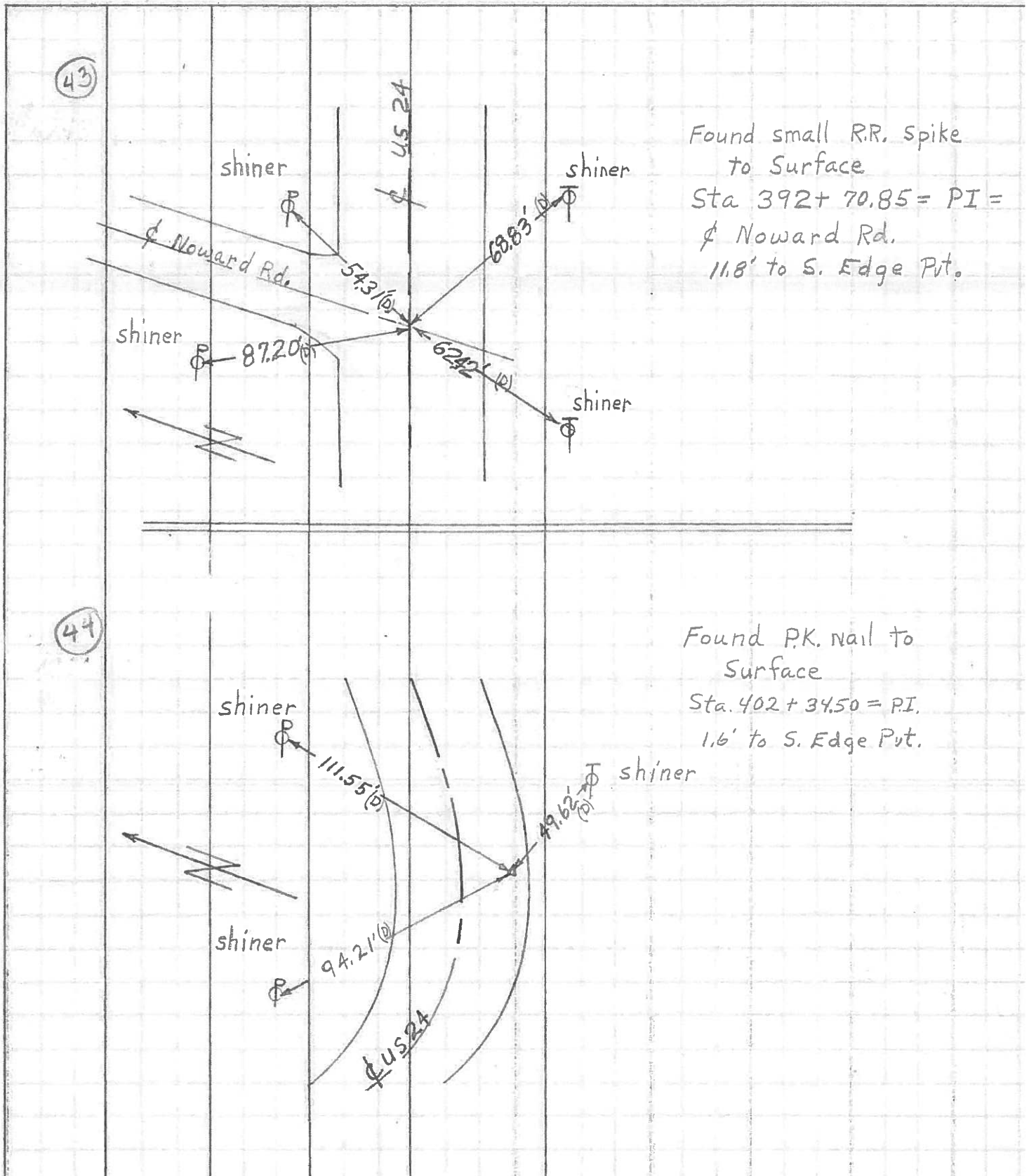
Ref. No. 4244



Fd. PK Nail To Surface  
Sta. 402+34.50 = P.I.  
1.5' to S. edge put.

PERSONNEL	TITLE	PERSONNEL	TITLE	COUNTY	DATE	WEATHER	TEMP.
W. Denno				Lucas	April 30, 1971	Mild	55°
D. Curtis				U.S. # 24			
R. Engel							

DESCRIPTION: Reference to Control Points





PERSONNEL TITLE PERSONNEL TITLE

COUNTY Lucas DATE 7 Feb. 66

Stone \_\_\_\_\_ Schroeder \_\_\_\_\_

S. R. #24 WEATHER Cool

Drano \_\_\_\_\_ \_\_\_\_\_

Beck \_\_\_\_\_ \_\_\_\_\_

SEC. \_\_\_\_\_ TEMP. 40°

Brindley \_\_\_\_\_ \_\_\_\_\_

DESCRIPTION Refs To Control Points JOB NO. \_\_\_\_\_

LEFT

CENTER LINE

RIGHT

363+28.04 = P.I.		49.13'	N.E. To S.W. Cor. Con. Block Porch Fldg. (D)
40	Ed. PK Nail	34.93'	N.N.E. To Shiner in P.P. (D)
	To Surface	36.05'	S.E. To Shiner in Guard Post (D)
		35.01'	S.W. To Shiner in Guard Post (D)
370+74.82 = P.I.		78.33'	S.E. To Shiner in T.P. (D)
41	Ed. PK Nail	65.49'	S.W. To Shiner in 15' Sycamore (D)
	To Surface	61.80'	N.W. To Shiner in P.P. (D)
385+29.01 = P.I.		41.70'	N.E. To Shiner in P.P. (D)
42	Ed. PK Nail	49.38'	S.S.E. To "4" on N.E. Cor. Con. Strip Slab (D)
	To Surface	40.61'	S.W. To Shiner in T.P. (D)
392+70.85 = P.I. (Howard Rd)		55.59'	N.E. To Shiner in P.P. (D)
43	Ed. Small R.R. Jpk.	87.15'	N.N.W. To Shiner in P.P. (D)
	To Surface	62.36'	S.W. To Shiner in T.P. (D)
		68.82'	S.E. To Shiner in T.P. (D)
402+34.50 = P.I.		94.19'	N.W. To Shiner in P.P. (D)
44	Ed. PK Nail	49.62'	S.E. To Shiner in T.P. (D)
	To Surface	38.22'	S. To Hercules Fence Post 2' Up (D)
		84.59'	S.W. To Hercules Fence Post 2' Up (D)
409+44.94 = P.I.		69.25'	N.E. To Shiner in 18" Box Elder (D)
45	Ed 1" F. Pin 6" off	46.92'	N.N.E. To Shiner in P.P. (D)
	S. Edge Pkt. at Surface	50.89'	S.E. To Shiner in 15" Maple (D)
		30.74'	S. To Shiner in T.P. (D)

PERSONNEL	TITLE	PERSONNEL	TITLE
Silvester			
#			
crew			

COUNTY Lucas DATE 1958  
 S. R. #24 WEATHER \_\_\_\_\_  
 SEC. He-Luc-Waterville TEMP. \_\_\_\_\_  
 (0.00)

DESCRIPTION LEFT CENTER LINE RIGHT JOB NO.

