

O.D.O.T. DISTRICT 2 SURVEY OFFICE

PERSONNEL _____

REFERENCE NO. 45

SHEET 52 OF 68

NOTES HUSS

H.C. VAN DOSEN

DATE 6-5-97

ROUTE U.S. 24

R.C. LOEARKE

WEATHER FAIR

COUNTY LUCAS

A C. COX

TEMP. +70°F

TOWNSHIP PROVIDENCE

SECTION 19

T 6 N R 10 E

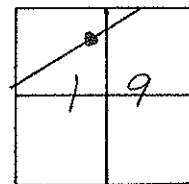
TYPE MONUMENT PK NAIL/W

ON SURFACE - ~~BELOW~~ YES

~~LEFT~~ - CL PAV'T. - RIGHT 11.6' RT

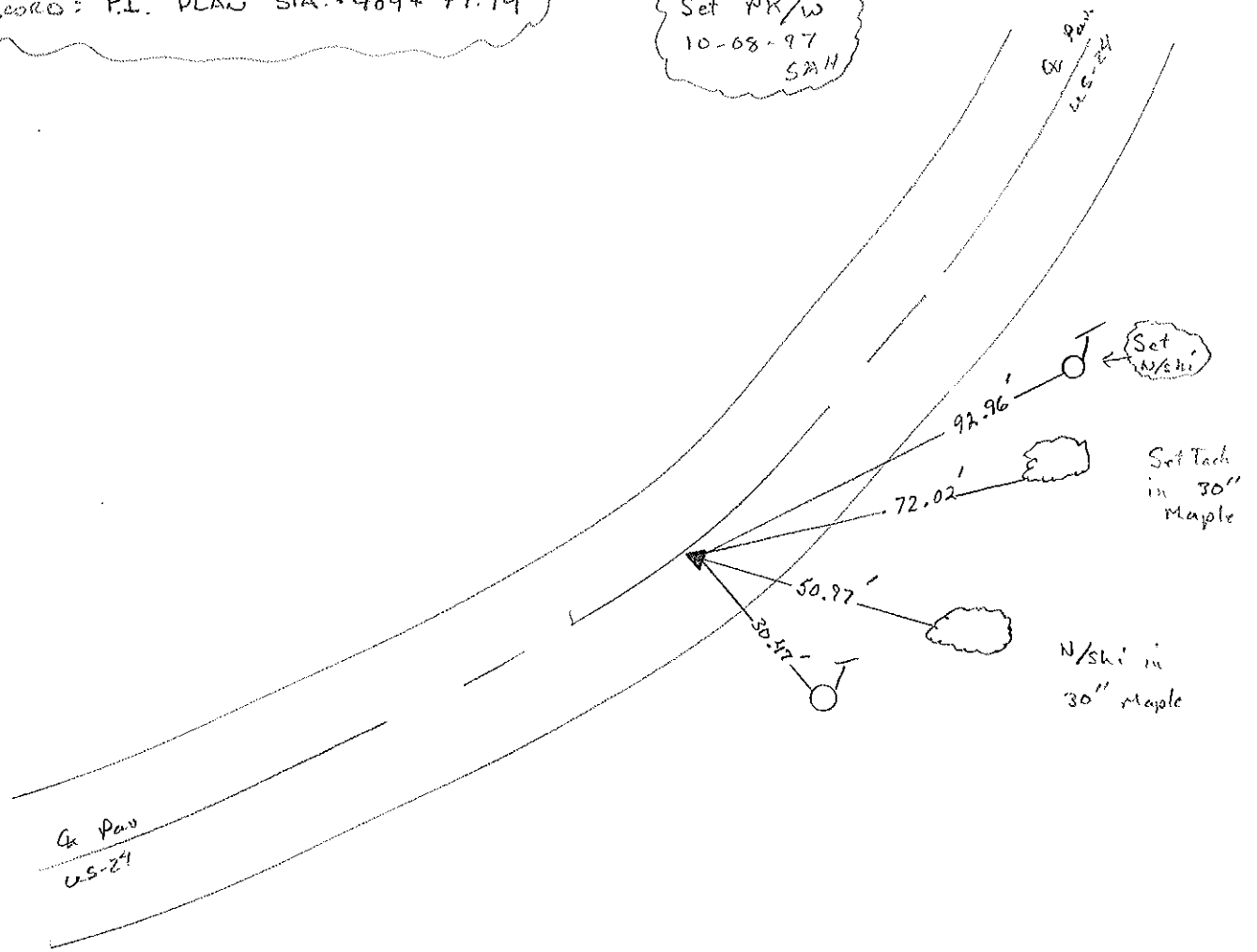
0.7' LT TO RT. EDGE PAVEMENT

S.L.M. 409 + 99



RECORD: P.I. PLAN STA. = 409 + 44.94

Set PK/W
10-68-97
SAH



ODOT. DISTRICT 2 SURVEY OFFICE

Sht. 51 of

County Lucas SR. 05 #24

Township Providence

Section 19

T N, R E

Personnel I. Stone

R. Michalak

D. Curtis

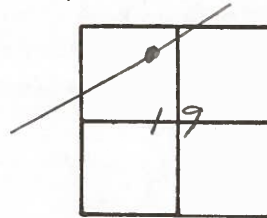
45

OK-9-5-80 G.W.S.

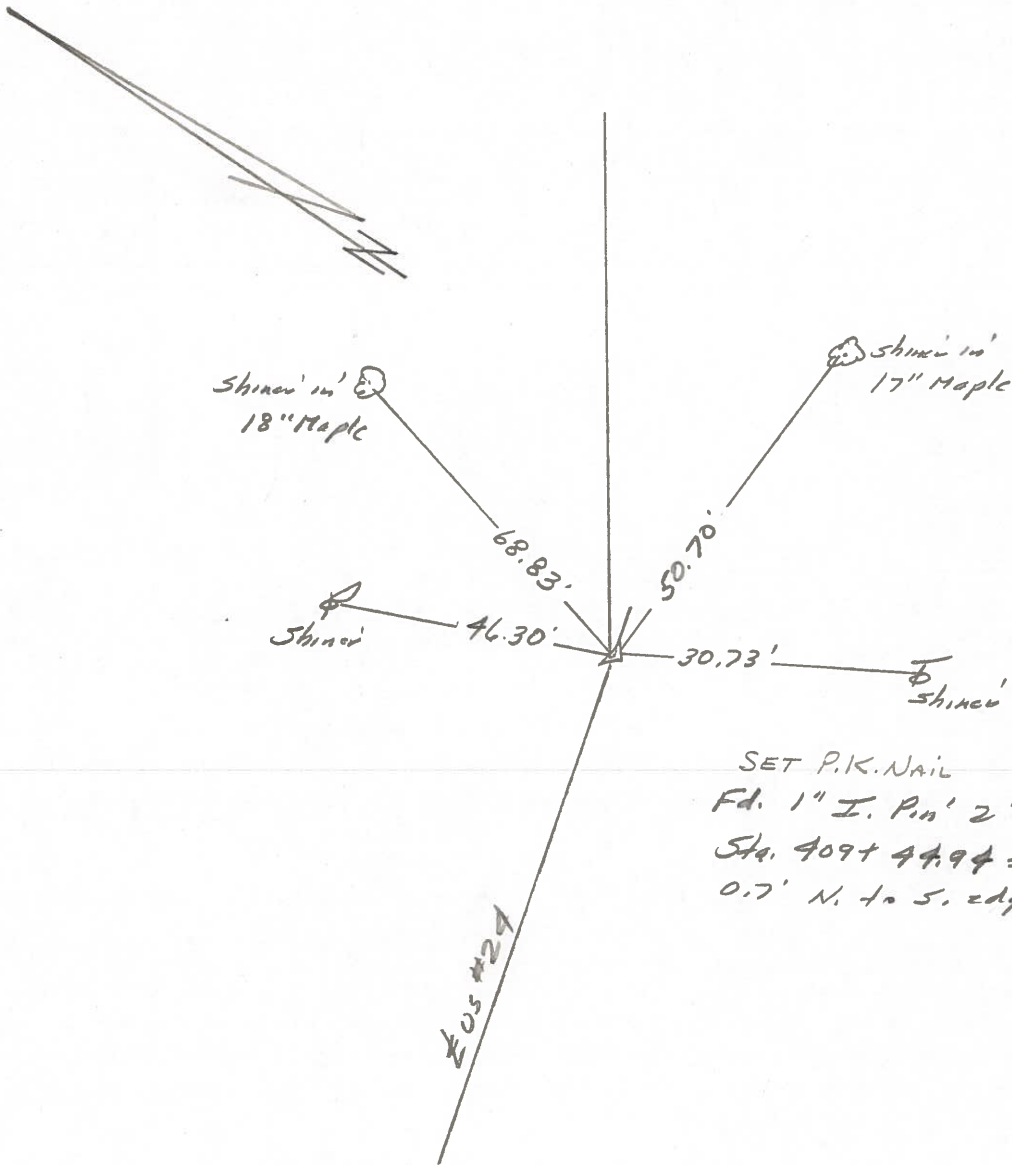
Date 23 July 1980

Weather Warm

Temp. 79°



Ref. No. 4245



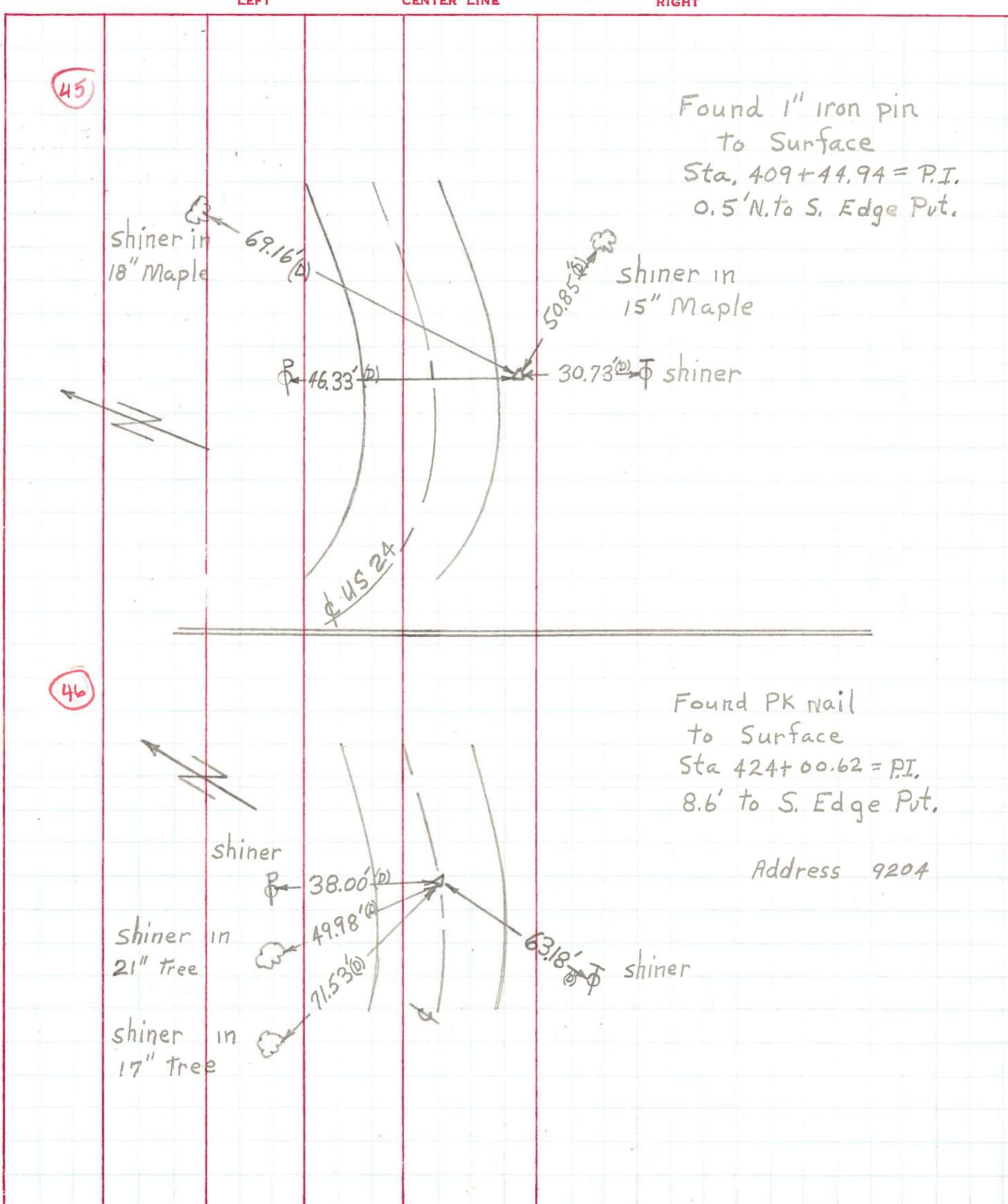
PERSONNEL	TITLE	PERSONNEL	TITLE
<u>W. Denno</u>			
<u>D. Curtis</u>			
<u>R. Engel</u>			

COUNTY Lucas DATE April 30, 1977

S. R. U.S. # 24 WEATHER Mild

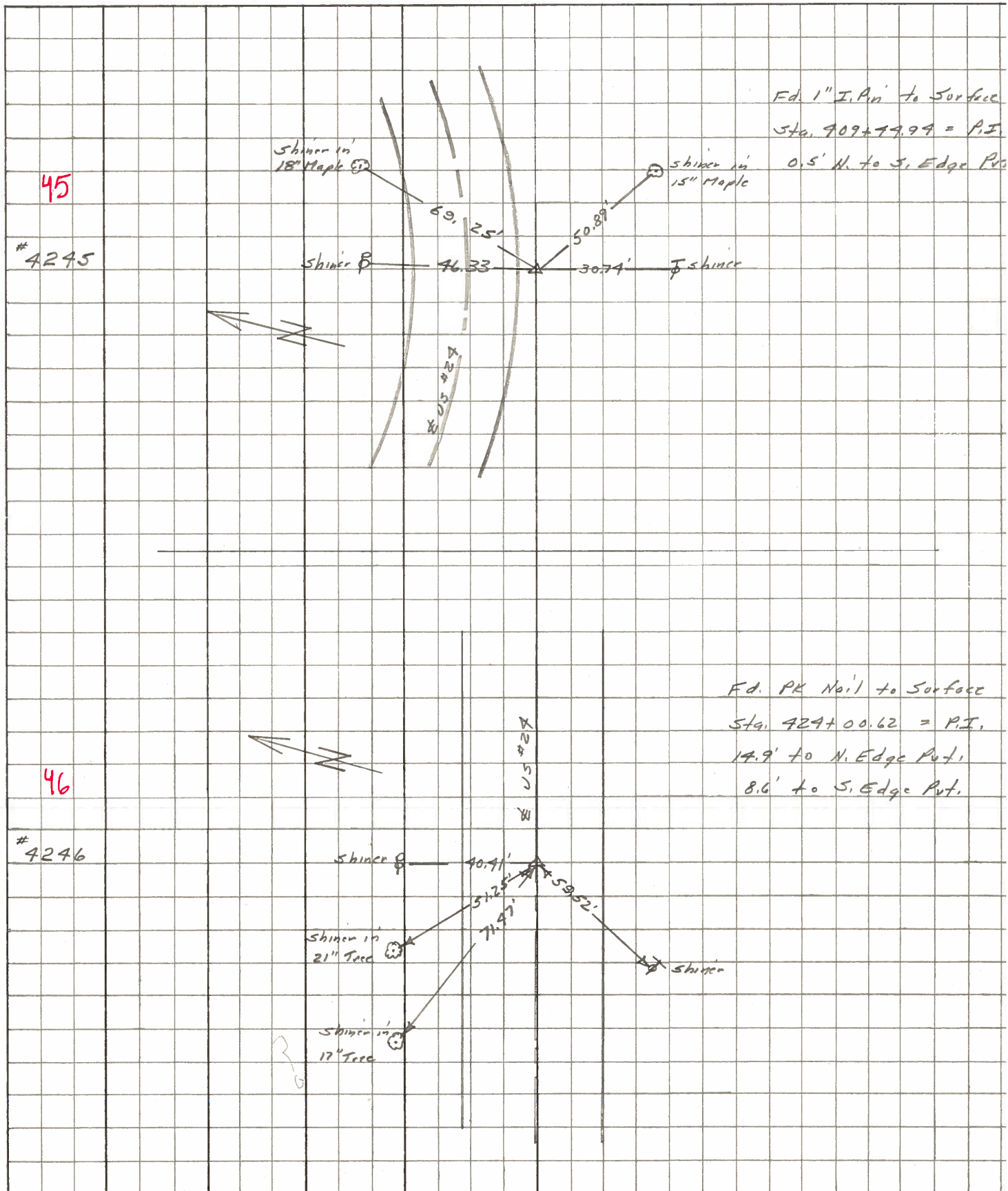
SEC. _____ TEMP. 55°

DESCRIPTION References to Control Points JOB NO. _____



PERSONNEL	TITLE	PERSONNEL	TITLE	COUNTY	DATE
Stone	Notes			Lucas	May 68
Beck	Flag			#24	Fair
Michalek	Tape				
Schroder	Tape				

DESCRIPTION References to Control Points JOB NO. _____



PERSONNEL TITLE PERSONNEL TITLE COUNTY Lucas DATE 7 Feb. 66
Stone _____ Schroeder _____
Drain _____ S. R. #29 WEATHER Cool
Beck _____ SEC. _____ TEMP. 40°
Brindley _____
 DESCRIPTION Pnts. To Control Points JOB NO. _____

	LEFT	CENTER LINE	RIGHT
40	363+28.04 = P.I.	49.13'	N.E. To S.W. Cor. Con. Block Porch Fdth. (D)
	Fd. PK Nail	39.93'	N.N.E. To Shiner in P.P. (D)
	To Surface	36.05'	S.E. To Shiner in Guard Post (D)
		35.01'	S.W. To Shiner in Guard Post (D)
41	370+94.82 = P.I.	92.33'	S.E. To Shiner in T.P. (D)
	Fd. PK Nail	65.49'	S.W. To Shiner in 15" Sycamore (D)
	To Surface	61.80'	N.W. To Shiner in P.P. (D)
42	385+29.01 = P.I.	71.70'	N.E. To Shiner in P.P. (D)
	Fd. PK Nail	49.38'	S.S.E. To "4" on N.E. Cor. Con. Stop Slab (D)
	To Surface	40.61'	S.W. To Shiner in T.P. (D)
43	392+20.85 = P.I. (Howard Rd)	55.59'	N.E. To Shiner in P.P. (D)
	Fd. Small RR Jpk.	87.15'	N.W. To Shiner in P.P. (D)
	To Surface	62.76'	S.W. To Shiner in T.P. (D)
		68.82'	S.E. To Shiner in T.P. (D)
44	402+34.50 = P.I.	94.19'	N.W. To Shiner in P.P. (D)
	Fd. PK Nail	49.62'	S.E. To Shiner in T.P. (D)
	To Surface	38.22'	S. To Hercules Fence Post 2' Up (D)
		84.59'	S.W. To Hercules Fence Post 2' Up (D)
45	409+44.94 = P.I.	69.25'	N.E. To Shiner in 18" Box Elder (D)
	Fd 1" I. Pin 6" off	46.92'	N.N.E. To Shiner in P.P. (D)
	S. Edge Pnt. at Surface	50.89'	S.E. To Shiner in 15" Maple (D)
		30.74'	S. To Shiner in T.P. (D)

PERSONNEL	TITLE	PERSONNEL	TITLE
Silvester			
#			
crew			

COUNTY LUCAS DATE 1958
 S. R. #24 WEATHER _____
 SEC. He-Luc-Waterville TEMP. _____
(0.00)

DESCRIPTION LEFT CENTER LINE RIGHT JOB NO.

