

O.D.O.T. DISTRICT 2 SURVEY OFFICE

PERSONNEL

REFERENCE NO. 47

SHEET 54 OF 68

NOTES HUSS

H.C. VAN DOSEN

R.C. LOERKE

F C. COX

DATE 6-5-97

WEATHER FAIR

TEMP. +70°F

ROUTE U.S. 24

COUNTY LUCAS

TOWNSHIP PROVIDENCE

SECTION 19

T 6 N R 10 E

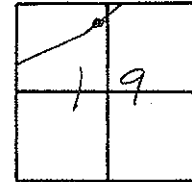
TYPE MONUMENT P.K. NAIL/W

ON SURFACE -BELOW YES

LEFT- & PAW'T. - RIGHT 0.4'

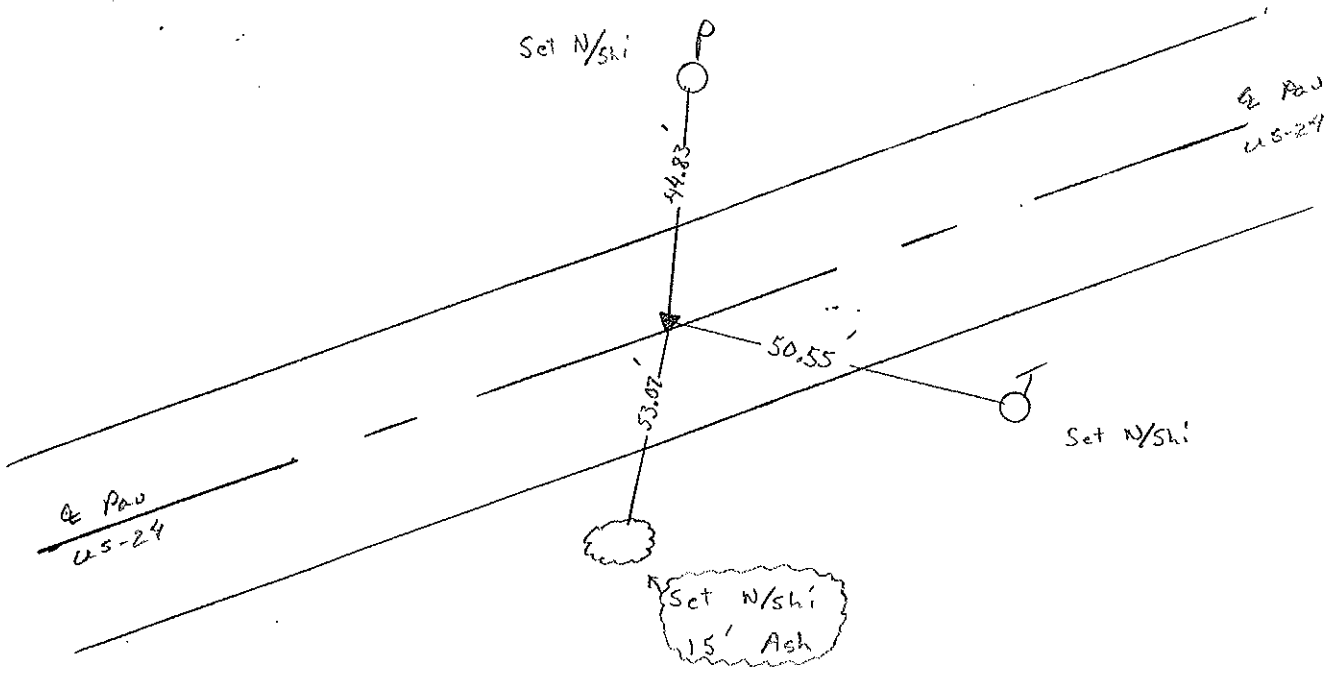
11.8' TO LT. EDGE PAVEMENT

S.L.M. 436+36



Record: P.I. PLAN STA. = 436+71.60

Set PK/W
10-08-97 SAH



Q.D.O.T. DISTRICT 2 SURVEY OFFICE

Sht. 53 of

County Lucas ~~S.R.~~ US#24

Township Providence

Section 19

T N, R E

Personnel J. Stone

R. Michalak

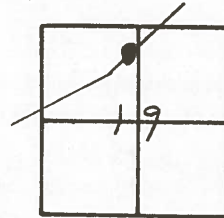
J. Cootis

47

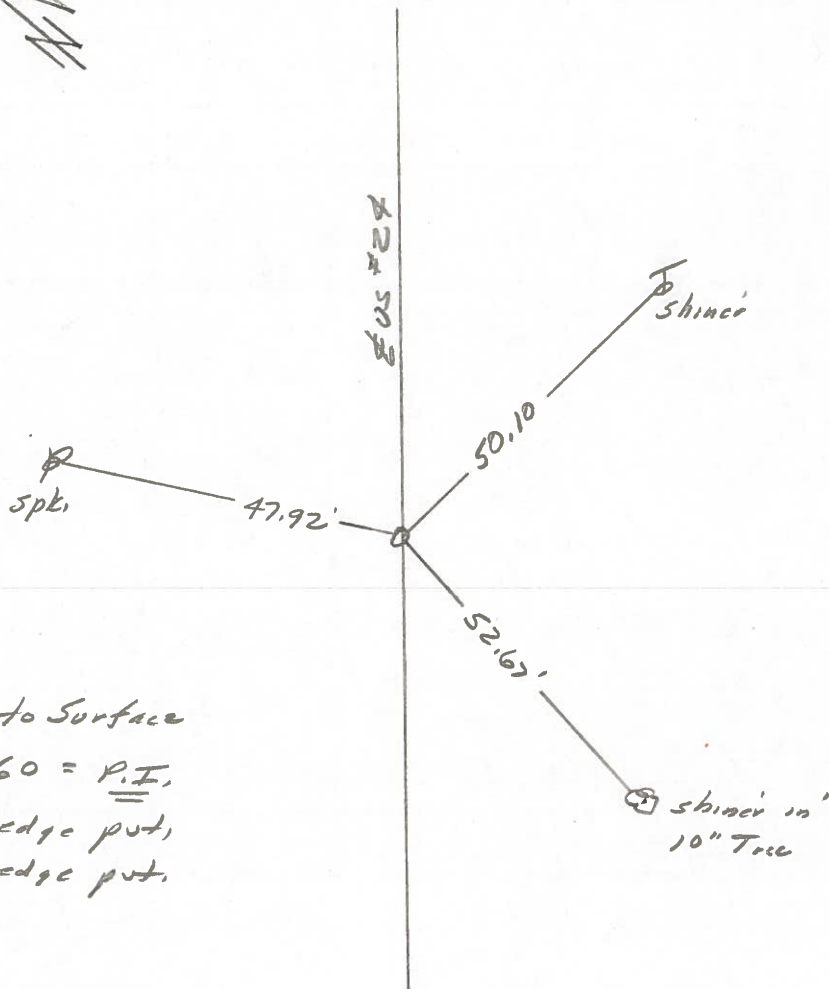
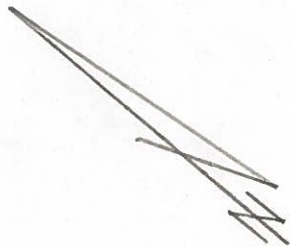
Date 23 July 1980

Weather Warm

Temp. 79°



R.F. No. 4247



Fd. PK Nail to Surface
Sta. 436+71.60 = P.I.
12.5' to S. edge put,
11.7' to N. edge put.

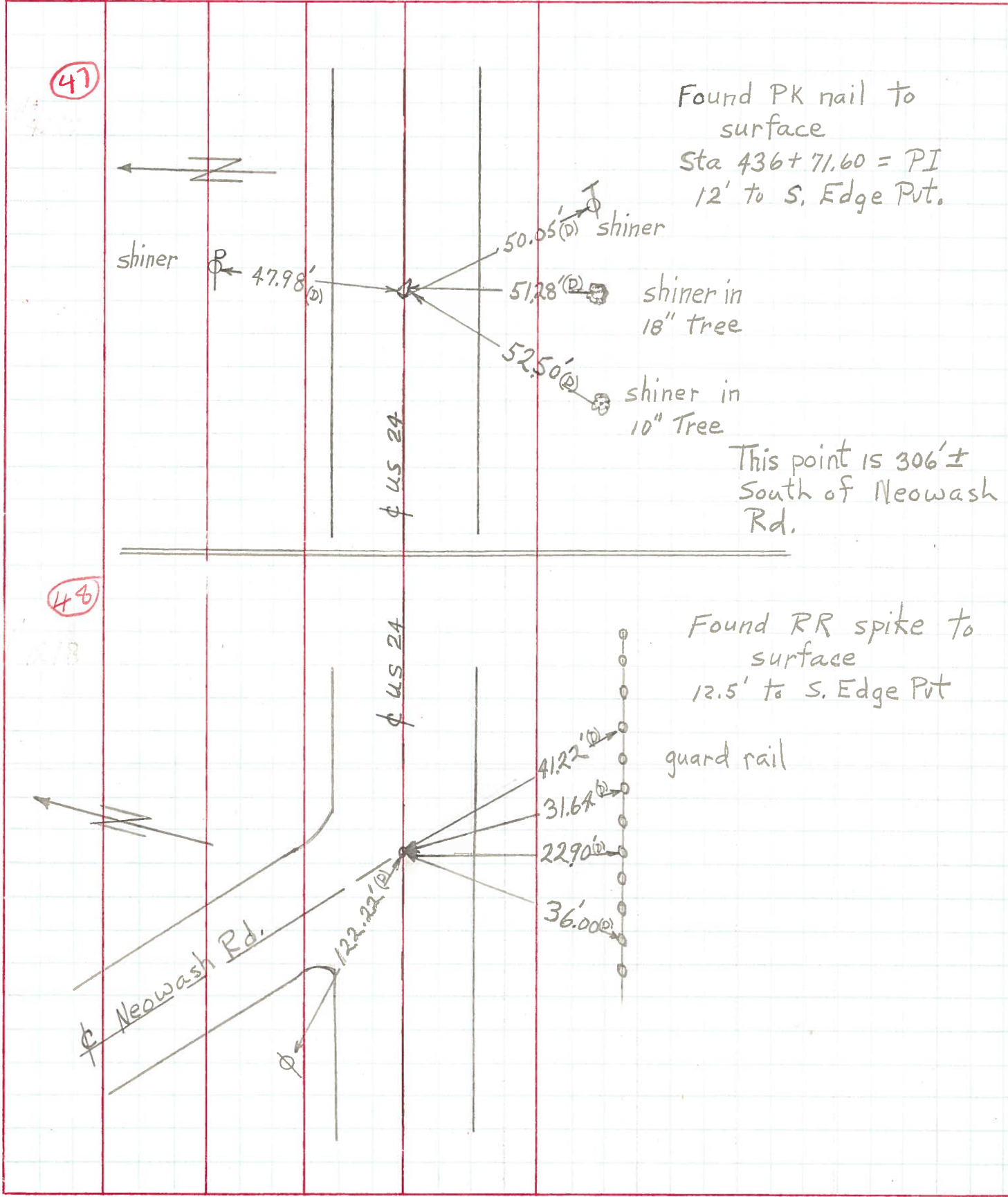
PERSONNEL	TITLE	PERSONNEL	TITLE
<u>W. Denno</u>			
<u>D. Curtis</u>			
<u>R. Engel</u>			

COUNTY Lucas DATE May 3, 1995

S. R. U.S. # 24 WEATHER Cool

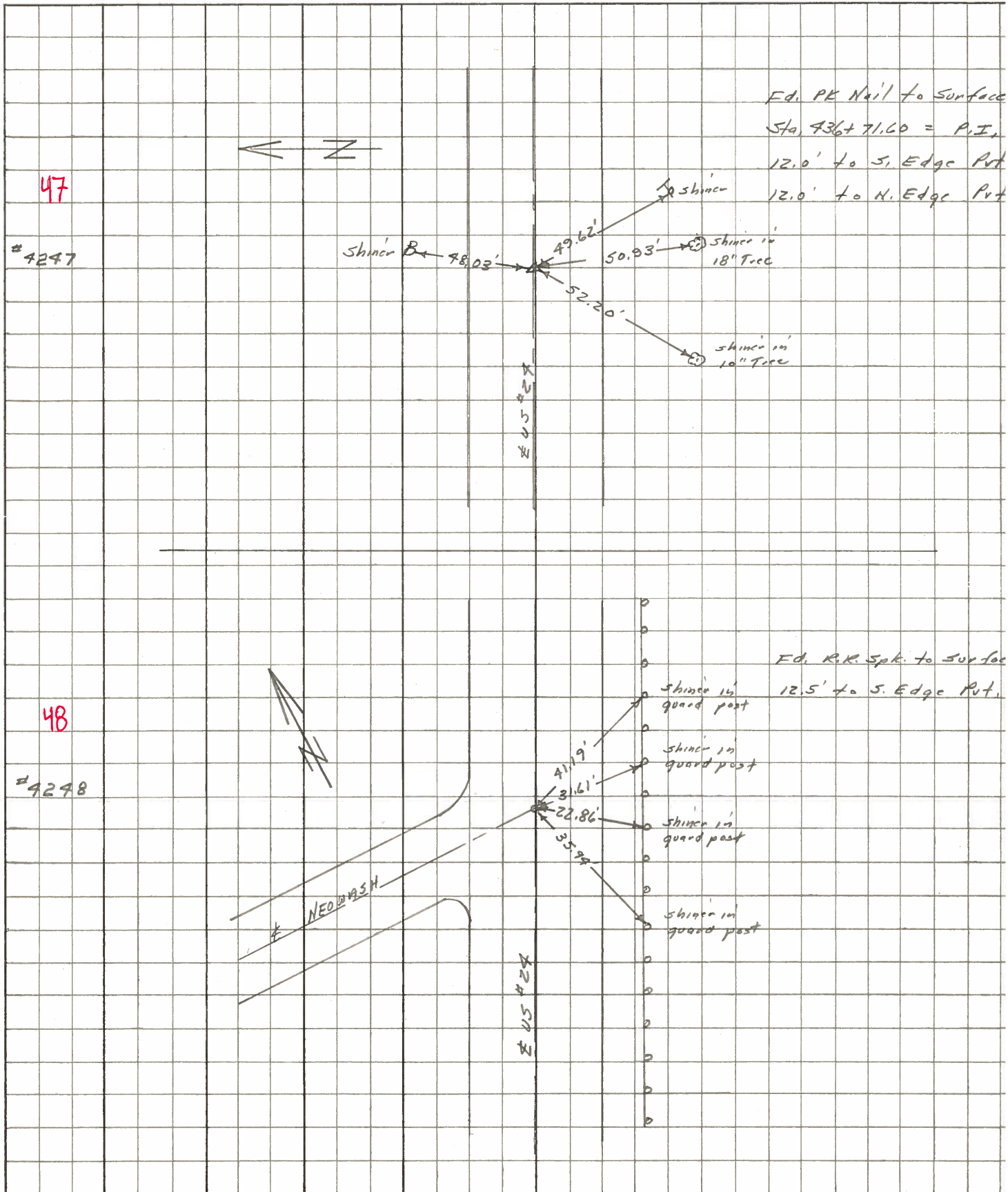
SEC. _____ TEMP. 45°

DESCRIPTION _____ REFERENCES TO CONTROL POINTS _____ JOB NO. _____



PERSONNEL	TITLE	PERSONNEL	TITLE	COUNTY	DATE	WEATHER	TEMP.
<u>Stone</u>	<u>Notes</u>			<u>Lucas</u>	<u>May 68</u>		
<u>Beck</u>	<u>Flag</u>			<u>#29</u>		<u>Fair</u>	
<u>Michalak</u>	<u>Tape</u>						
<u>Schroder</u>	<u>Tape</u>						

DESCRIPTION References to Control Points JOB NO. _____



PERSONNEL	TITLE	PERSONNEL	TITLE	COUNTY	Lucas	DATE	7 Feb. 66
<u>Shane</u>		<u>Schroder</u>		S. R.	424	WEATHER	Cool
<u>Denno</u>				SEC.		TEMP.	70°
<u>Beck</u>				DESCRIPTION <u>Refs. To Control Points</u>			
<u>Brindley</u>				LEFT	CENTER LINE	RIGHT	JOB NO.

STATION	DESCRIPTION	LEFT	CENTER LINE	RIGHT
424+00.62	= P.I.		43.00'	N.E. To Shiner in P.P. (D)
46.	Set PK Nail		51.25'	N.W. To Shiner in 21" Box Elder (D)
	1/2" Below Surface		71.47'	N.W. To Shiner in 17" Box Elder (D)
			59.52'	S.W. To Shiner in T.P. (D)
	2 Newish P.I.		22.86'	S. To Shiner in Guard Post
	US#24		31.61'	S.E. To Shiner in Guard Post
	Ed. PK. No. 1		41.19'	S.E. To Shiner in Guard Post
	To Surface		35.94'	S.W. To Shiner in Guard Post
436+71.60	= P.I.		50.93'	SE To Shiner in 18" Sycamore S. BROTHERS FIRM in COLLID SYSTEM FIRM (D)
47	Set PK No. 1		49.62'	S.E. To Shiner in T.P. (D)
	at Surface		52.20'	S.W. To Shiner in 10" Tree (D)
			48.03'	N.E. To Shiner in P.P. (D)
443+37.00	= P.I. - Ed. Iron Pipe (1")		87.38'	E. To Shiner in P.P. (P)
	With 2 Fence Posts as		26.05'	N.W. To Shiner in 6" Pine (P)
	guards 2' above Ground.		37.66'	N. To Shiner in 6" Pine (P)
	82' N. of US#24			
450+50.70	= P.I. R/W - Ed. 2" I.P. pipe		32.09'	S. To Shiner in Twin 1" Elm (D)
50	at Surface 9.7' South		47.60'	S.W. To Shiner in Triple 6" Elm (D)
	of S. Edge Put.		82.60'	W.S.W. To Shiner in Eng Guard Post (D)
			81.15'	N.W. To Shiner in 40" Oak (P)
448+77.43	= P.I. Ed. 1" I.P. at		74.76'	E. To Top Edge C.M.P. at Drive (P)
51	Surface		17.21'	S. To Shiner in N. Edge Put. (P)
			74.67'	S.S.E. To Shiner in T.P. (P)

PERSONNEL	TITLE	PERSONNEL	TITLE	COUNTY	DATE	WEATHER	TEMP.
Silvester				LUCAS	1958		
Crew				#24			
				He-Luc - Waterville			
				(0.00)			

DESCRIPTION LEFT CENTER LINE RIGHT JOB NO.

