

O.D.O.T. DISTRICT 2 SURVEY OFFICE

PERSONNEL _____

REFERENCE NO. 51

SHEET 58 OF 68

NOTES HUSS

H.C. VAW Dusen

DATE 6-10-97

ROUTE U.S. 24

R.C. MOSEK

WEATHER CLEAR

COUNTY LUCAS

TEMP. +66°F

TOWNSHIP PROVIDENCE

SECTION 18

T. 6 N R. 10 E

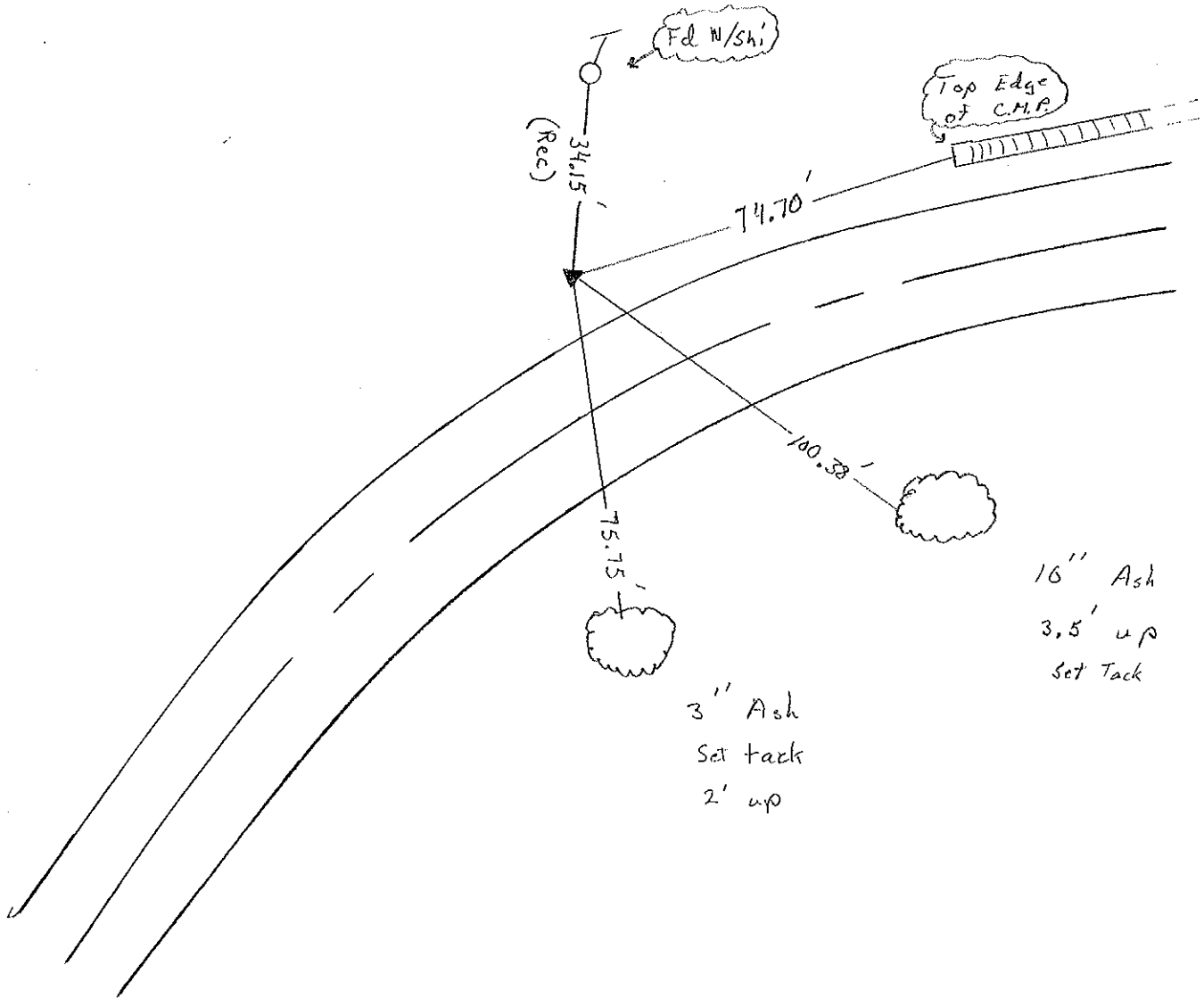
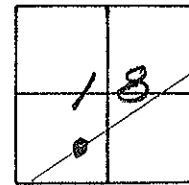
TYPE MONUMENT 1" I. PIPE

ON SURFACE - ~~BELOW~~ yes

LEFT - ~~E~~ PAV'T - RIGHT 29.4'

17.4 TO LT. OF LT. EDGE PAVEMENT

S.L.M. 468 + 48



OD.O.T. DISTRICT 2 SURVEY OFFICE

Sht. 52 of _____

County Lucas S.R. US#24

Township Providence

Section 18

T_N, R_E

Personnel I. Stone

R. Michalak

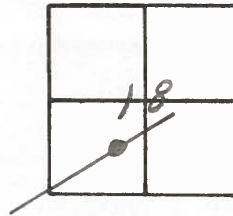
D. Curtis

(51)

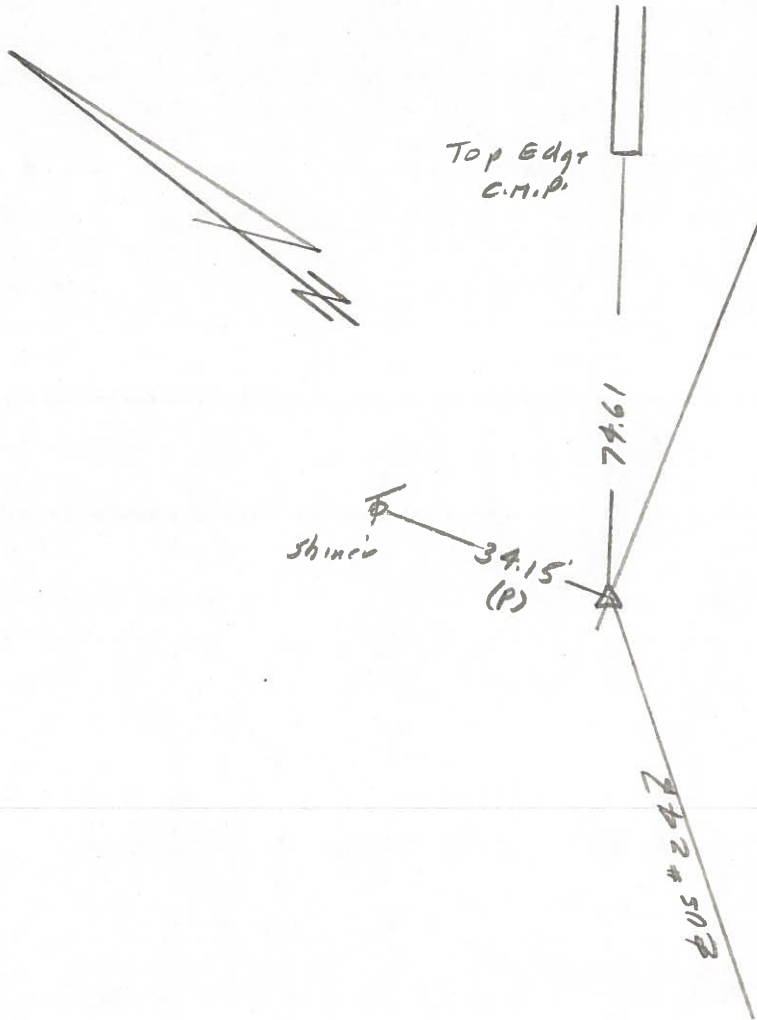
Date ^{OK - 9-5-80 G.W.S.} 23 July 1980

Weather Warm

Temp. 79°



Ref. No. 4251

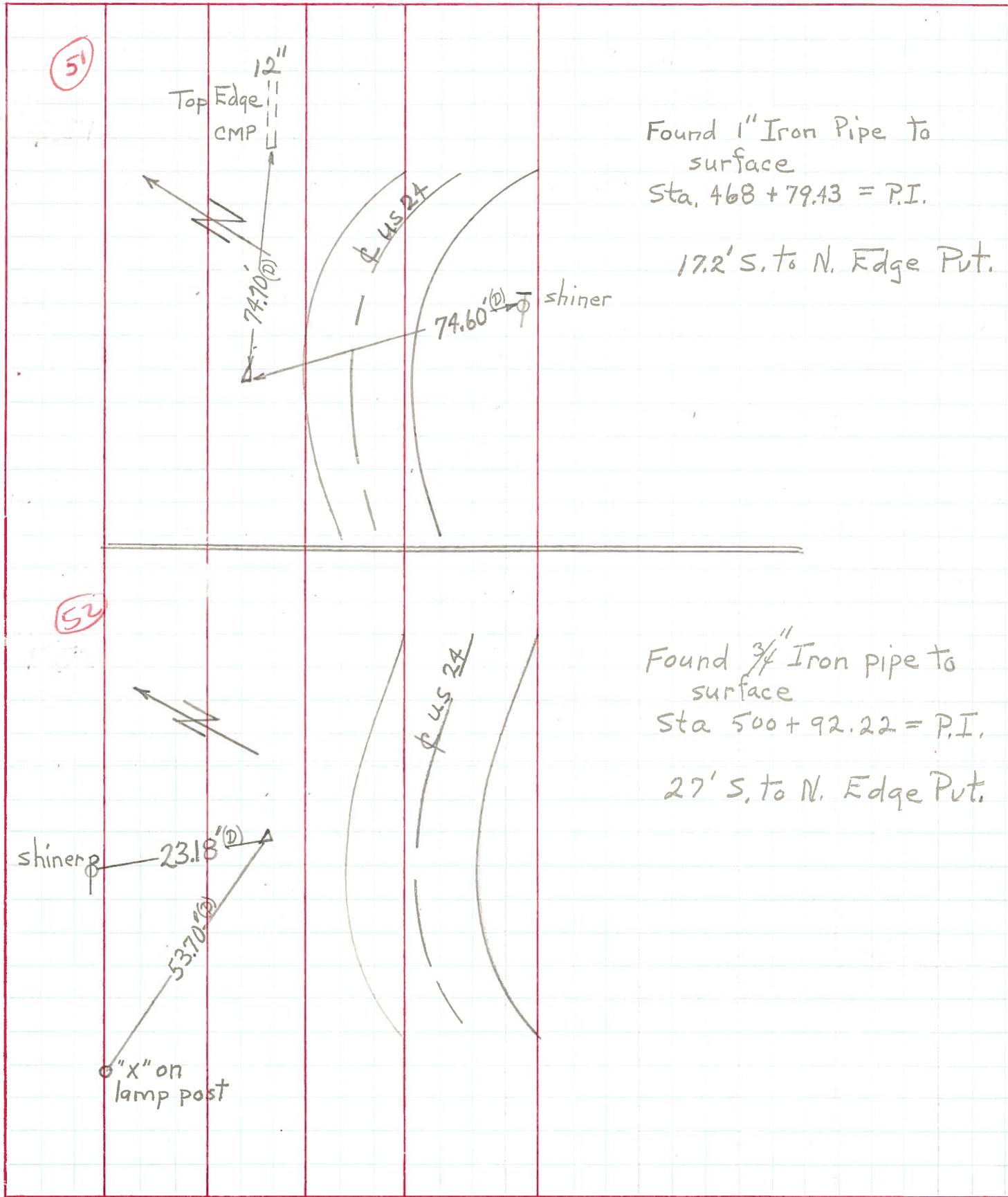


Fd. 1" I.P. TO Surface
Sta. 468+79.43 = P.I.
17.2' S. to N. edge post.

PERSONNEL	TITLE	PERSONNEL	TITLE
W. Denno			
D. Curtis			
R. Engel			

COUNTY Lucas DATE May 3, 1977
 S. R. US# 24 WEATHER Cool
 SEC. _____ TEMP. 45°

DESCRIPTION Reference to Control Points JOB NO. _____



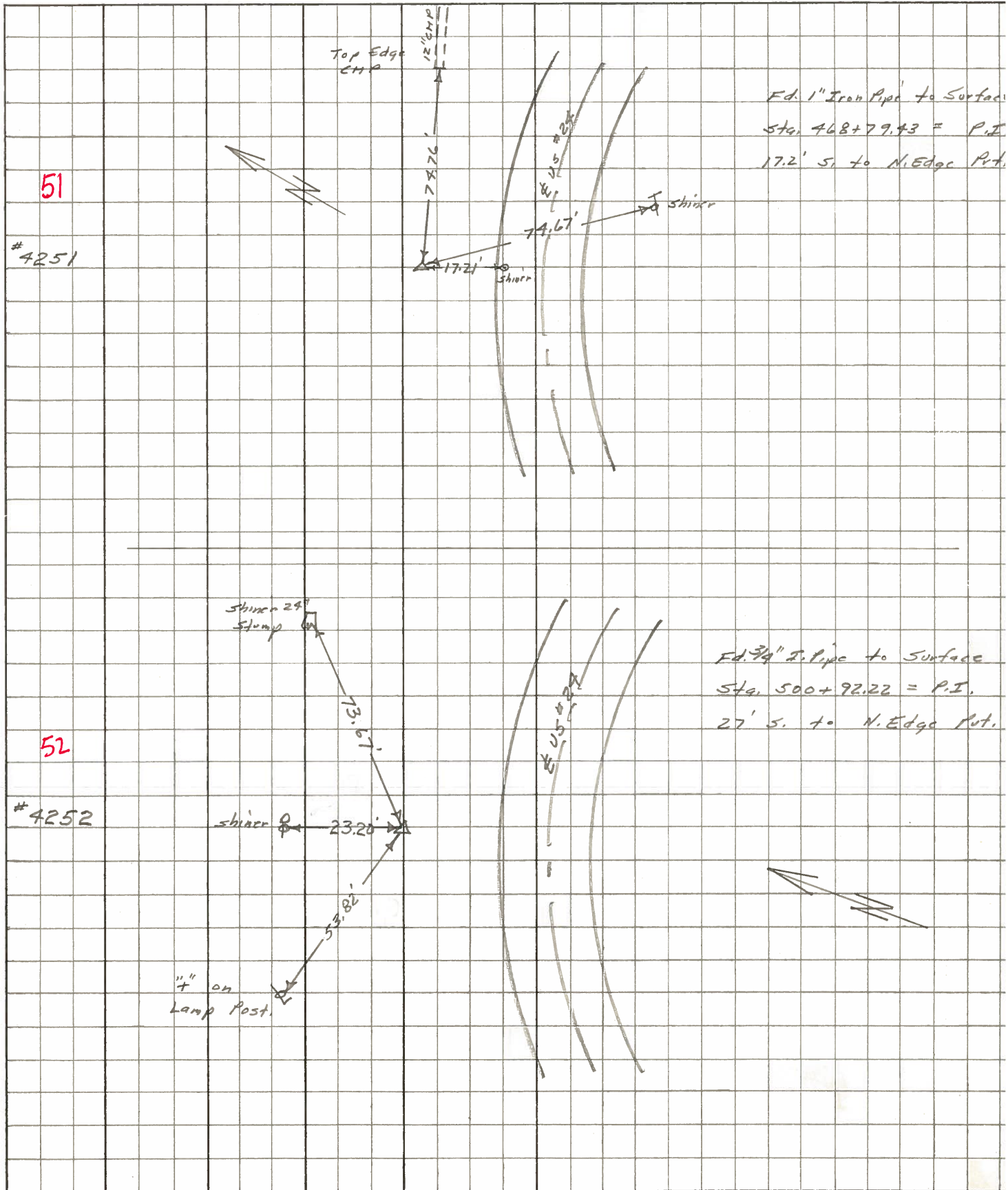
Found 1" Iron Pipe to surface
 Sta. 468 + 79.43 = P.I.
 17.2' S. to N. Edge Pnt.

Found 3/4" Iron pipe to surface
 Sta 500 + 92.22 = P.I.
 27' S. to N. Edge Pnt.

PERSONNEL	TITLE	PERSONNEL	TITLE
Stone	Notes		
Beck	Flag		
Michalek	Tape		
Schroder	Tape		

COUNTY Lucas DATE May 68
 S. R. # 27 WEATHER Fair
 SEC. _____ TEMP. _____

DESCRIPTION Reference to Control Points JOB NO. _____
 LEFT CENTER LINE RIGHT



PERSONNEL TITLE PERSONNEL TITLE COUNTY Lucas DATE 7 Feb. 66
Stanc _____ Schroder _____
Donno _____ S. R. 224 WEATHER Cool
Beck _____ SEC. _____ TEMP. 70°
Brindley _____
 DESCRIPTION _____ Pts. To Control Points JOB NO. _____

	LEFT	CENTER LINE	RIGHT
424+00.62 = P.I.		43.00'	N.N.E. To Shiner in P.P. (D)
46	Set PK Nail	51.25'	N.W. To Shiner in 21" Box Elder (D)
	1/2" Below Surface	71.47'	N.W. To Shiner in 17" Box Elder (D)
		59.52'	S.W. To Shiner in T.P. (D)
	2 Newish Pk #1	22.86'	S. To Shiner in Guard Post
	US #24	31.61'	S.E. To Shiner in Guard Post
	Ed. PK No. 1	41.19'	S.E. To Shiner in Guard Post
	To Surface	35.94'	S.W. To Shiner in Guard Post
436+71.60 = P.I.		50.93'	SE To Shiner in 18" Sycamore S. To Shiner in Collis System Pond (D)
47	Set PK No. 1	49.62'	S.E. To Shiner in T.P. (D)
	at Surface	52.80'	S.W. To Shiner in 10" Tree (D)
		48.03'	N.E. To Shiner in P.P. (D)
443+37.00 = P.I. - Ed. Iron Pipe (1")		87.38'	E. To Shiner in P.P. (P)
	With 2 Fence Posts as	36.05'	N.W. To Shiner in 6" Pine (P)
	guards 2' above Ground.	37.66'	N. To Shiner in 6" Pine (P)
	82' N. of US #24		
450+50.70 = P.I. R/W - Ed. 2" I.P. at		32.09'	S. To Shiner in Twin 1" Elm (D)
50	at Surface 4.7' South	47.60'	S.W. To Shiner in Triple 6" Elm (D)
	of S. Edge Put.	82.60'	W.S.W. To Shiner in Eng Guard Post (D)
		81.15'	N.W. To Shiner in 40" Oak (P)
468+77.43 = P.I. Ed. 1" I.P. at		79.76'	E. To Top Edge C.M.P. at Drive (P)
51	Surface	17.21'	S. To Shiner in N. Edge Put. (P)
		79.67'	S.S.E. To Shiner in T.P. (P)

PERSONNEL TITLE PERSONNEL TITLE COUNTY Lucas DATE 1958
 Silvester # WEATHER
 #24
 CREW SEC. TEMP.

DESCRIPTION LEFT CENTER LINE RIGHT JOB NO.

