

# O.D.O.T. DISTRICT 2 SURVEY OFFICE

PERSONNEL \_\_\_\_\_

REFERENCE NO. 53-53A-53B SHEET 60 OF 68

NOTES HUSS

H.C. VAN DUSEN

DATE 6-10-97

ROUTE U.S. 24

R.C. MOSEK

WEATHER Sunny

COUNTY LUCAS

TEMP. + 67°F

TOWNSHIP WATERVILLE

SECTION 18

T 6 N R 10 E

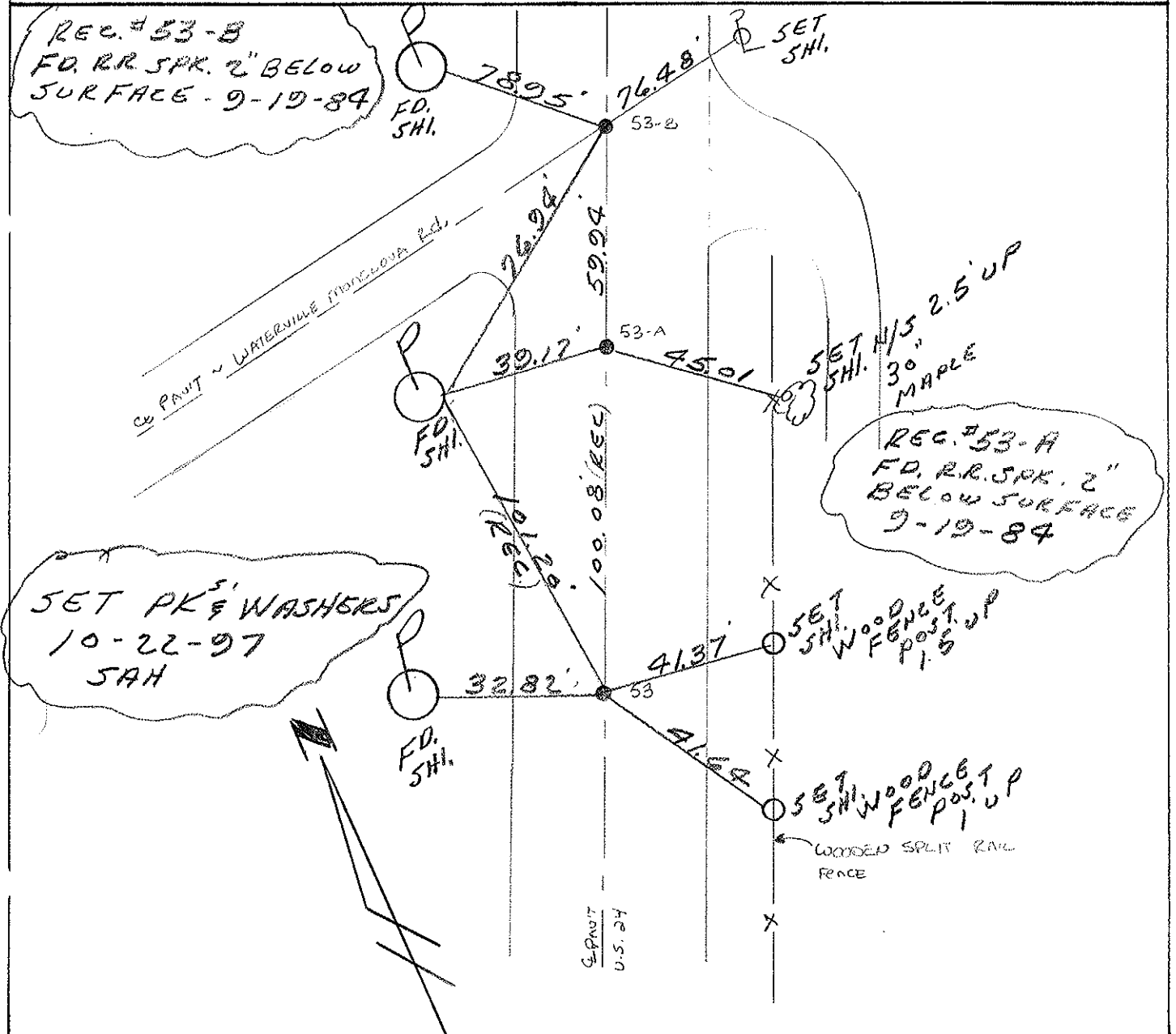
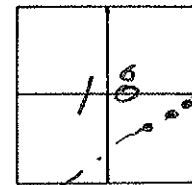
TYPE MONUMENT 53-B PKW

ON SURFACE - BELOW 53-ON SURFACE  
53-A ~ 53-B - 2" BELOW

LEFT- & PAW'T. - RIGHT 53 - 0.4' RT. CL  
53-A ~ 53-B - ON CL

TO \_\_\_\_\_ EDGE PAVEMENT 53 - 13.2' RT  
53A - 12.4' RT  
53B - 11.8' RT

S.L.M. 53 - 506 + 99.92 ~ 53-A - 508 + 00 - 53-B - 508 + 89.94



County Lucas S.R. US#24

Date 26 June 84

Township Waterville

Weather Fair

Section 31

Temp. 65°

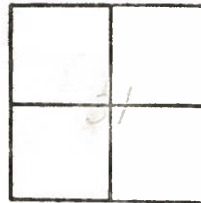
T N, R E

Personnel I. Stone

**53,A,B** P. Neusser

R. Michalak

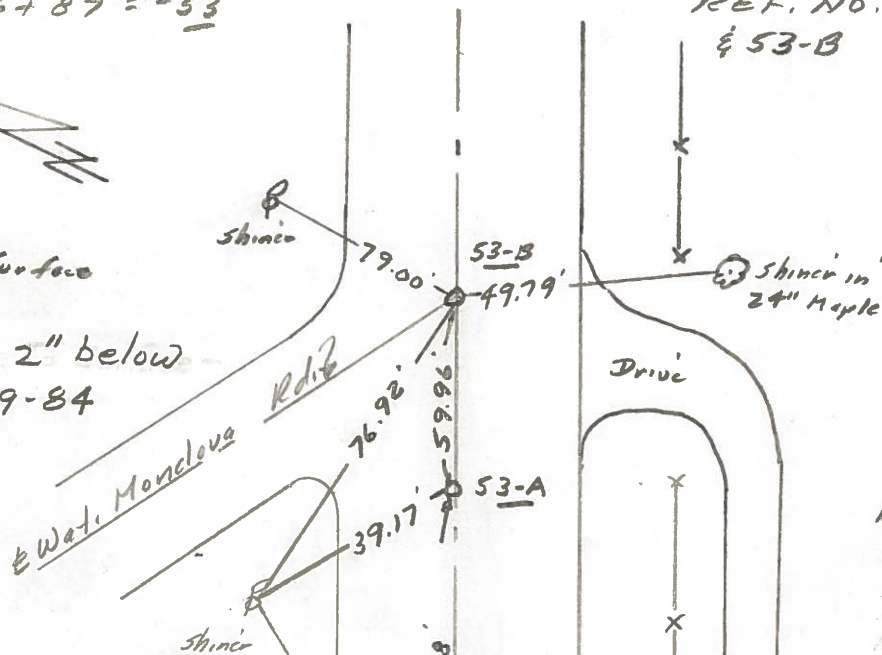
D. Curtis



SLM Sta. 506+87 = #53

REF. NO. 53 & 53A & 53-B

Ref # 53-B  
Fd RR Spk. to Surface  
Set  
Fd. R.R. Spk. 2" below  
Surface - 9-19-84



Ref # 53-A  
Fd RR Spk to Surface  
Set  
Fd. R.R. Spk. 2"  
below surface  
9-19-84

Ref # 53  
Fd. PK Nail to Surface  
Set PK Nail  
11.9' to N. edge put.  
12.2' to S. edge put.

Reset P.K. Nail to Surface -  
9-19-84

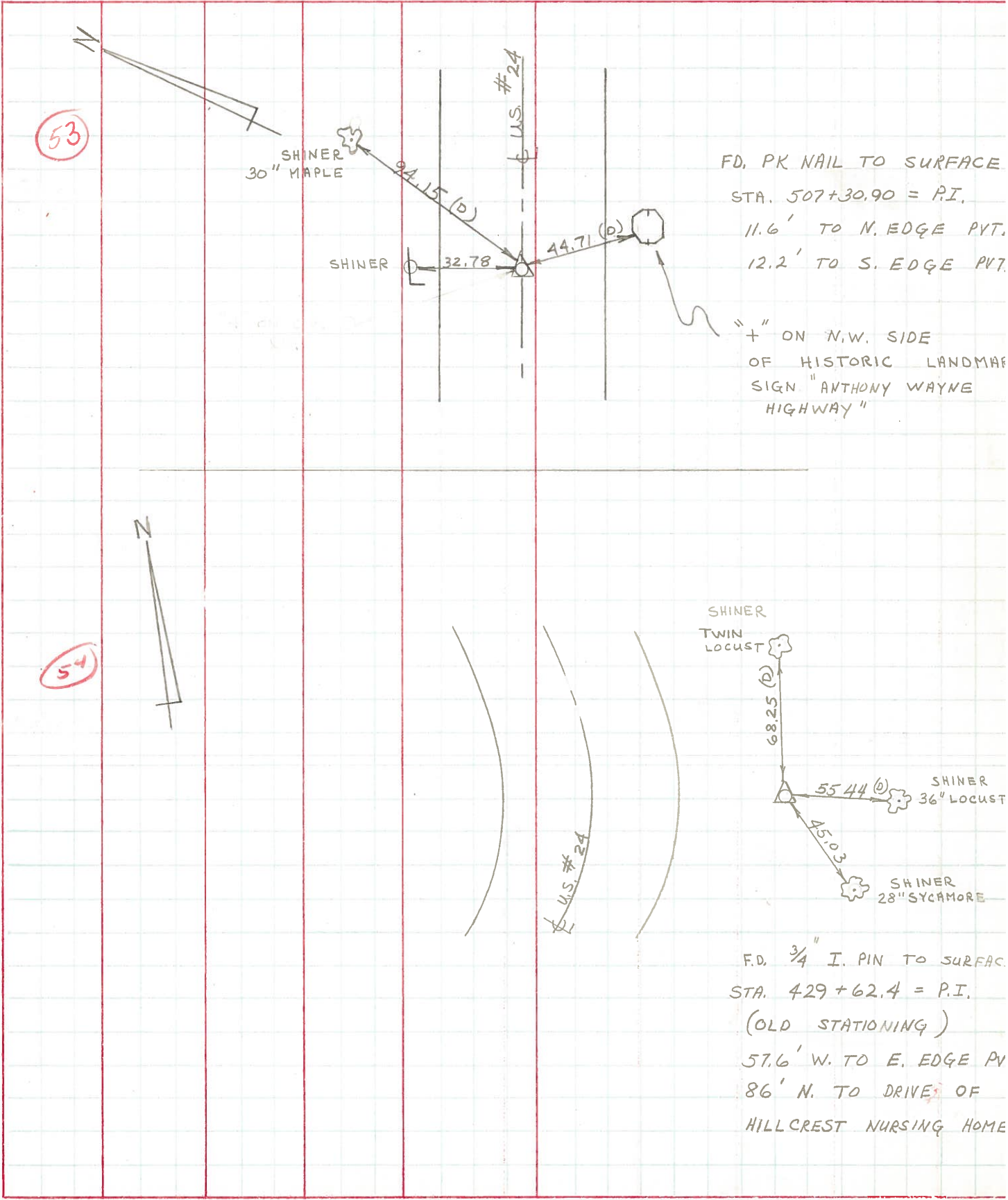
US#24

" on NW side  
steel historic  
sign post

Shiner in  
wood fence post

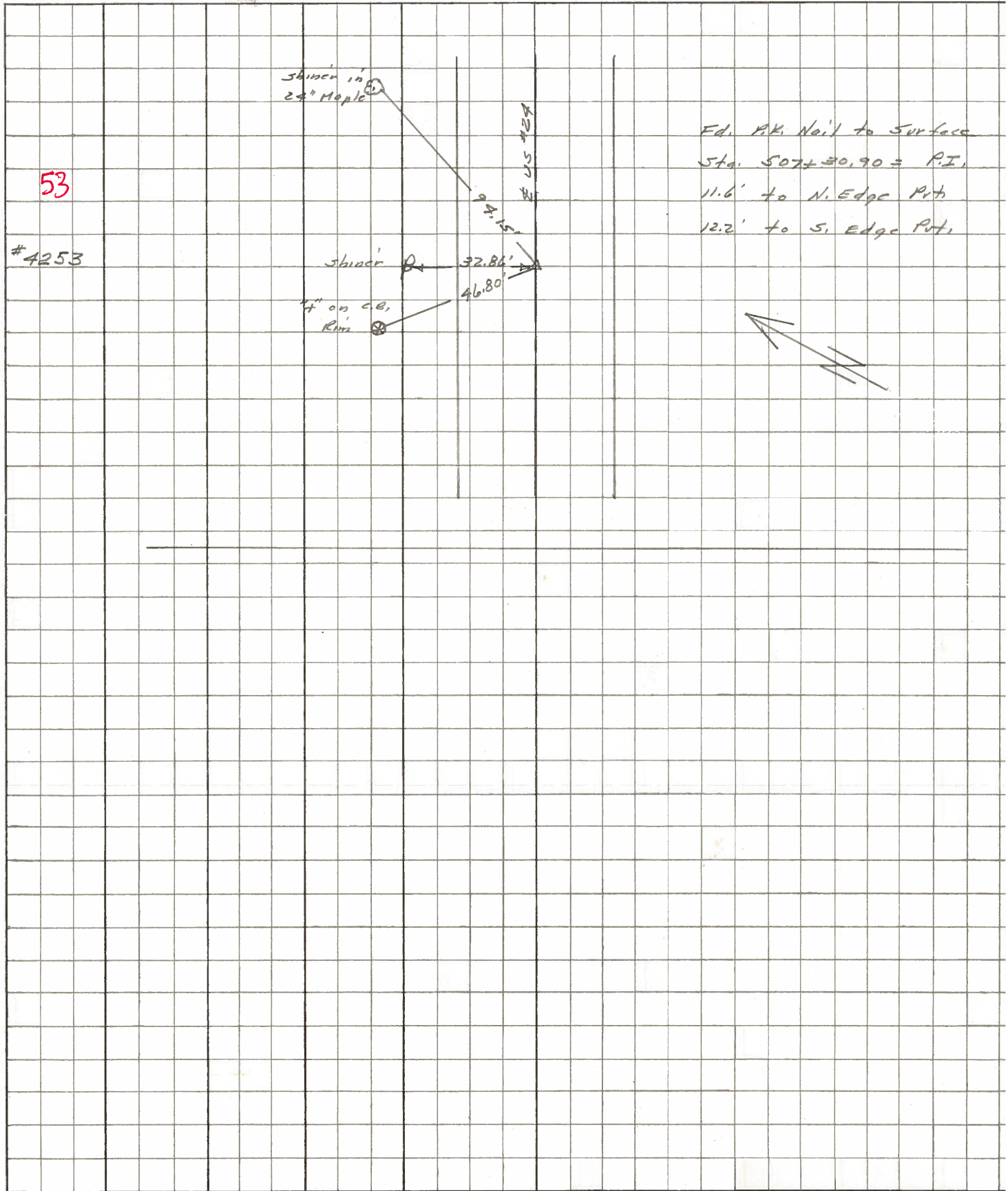
PERSONNEL	TITLE	PERSONNEL	TITLE	COUNTY	DATE	WEATHER	TEMP.
D. CURTIS				LUCAS	JULY 8, 197	CLOUDY	70±
D. STEVENS				S. R. U.S. #24			
R. BRANNAN							

DESCRIPTION	REFERENCES TO CONTROL POINTS	JOB NO.
	LEFT CENTER LINE RIGHT	



PERSONNEL	TITLE	PERSONNEL	TITLE	COUNTY	<u>LUCAS</u>	DATE	<u>May 68</u>
<u>Stone</u>	<u>Notes</u>			S. R.	<u>#27</u>	WEATHER	<u>Fair</u>
<u>Beck</u>	<u>Flag</u>			SEC.		TEMP.	
<u>Michalak</u>	<u>Tape</u>						
<u>Schroder</u>	<u>Tape</u>						

DESCRIPTION References to Control Points JOB NO. \_\_\_\_\_



53

#4253

PERSONNEL TITLE PERSONNEL TITLE

COUNTY Lucas DATE 8 Feb. 66

Shane \_\_\_\_\_ Schroder \_\_\_\_\_

S. R. #24 WEATHER Damp

Danno \_\_\_\_\_ \_\_\_\_\_

Beck \_\_\_\_\_ \_\_\_\_\_

SEC. \_\_\_\_\_ TEMP. 35°

Grindley \_\_\_\_\_ \_\_\_\_\_

DESCRIPTION Refs. To Control Points JOB NO. \_\_\_\_\_

LEFT CENTER LINE RIGHT

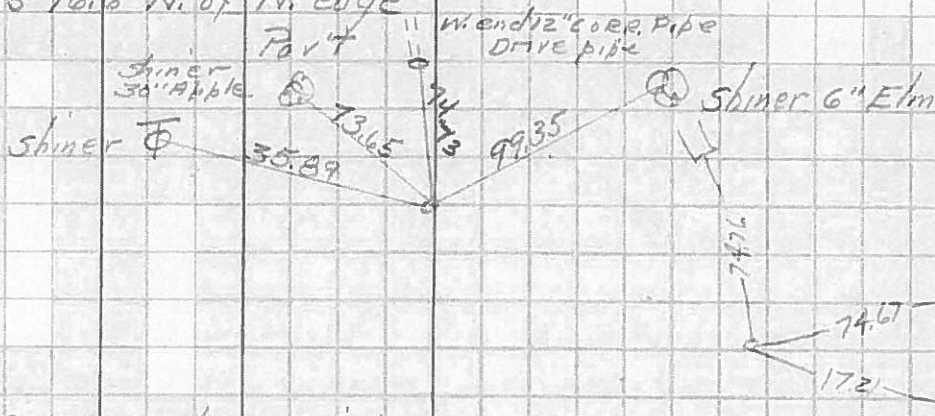
DESCRIPTION	LEFT	CENTER LINE	RIGHT
✓ 500+72.22 = P.I.	Ed. 3/4" I.P.	73.67	N.E. To Shiner in 24" Stamp (P)
52	at Surface	72.39'	N. To Shiner in P.P. (D)
	27' N. of N. Edge Pt.	23.20'	N.W. To "f" on Lamp Post (P)
		53.82'	
507+30.90 = P.I.		94.15'	N.E. To Shiner in 24" Maple (D)
✓ 53	Ed. PK Nail	32.86'	N. To Shiner in P.P. (D)
12.2	at Surface	46.80'	N.W. To "f" on Riv. of Catch Basin (D)

PERSONNEL	TITLE	PERSONNEL	TITLE	COUNTY	DATE
Silvester				LUCAS	1958
#				#24	WEATHER
CREW					TEMP.

DESCRIPTION	LEFT	CENTER LINE	RIGHT	JOB NO.
-------------	------	-------------	-------	---------

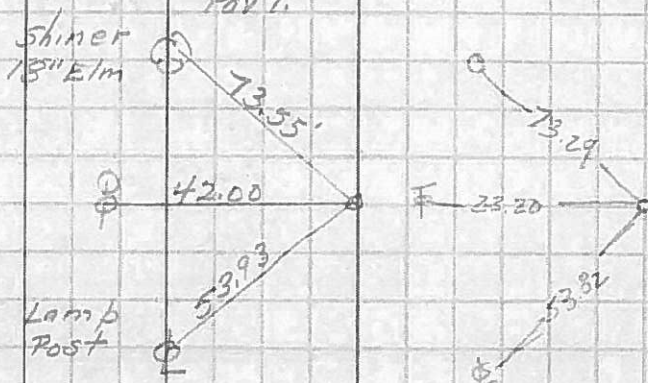
✓ P.I. Sta. 468+79.43 Set Iron Pipe  
 Note: P.I. is 16.6' N. of N. edge

51



P.I. Sta. 500+92.22 Set Iron Pipe  
 Note: P.I. is 27.0' N. of N. edge of Pav't.

52



✓ P.I. Sta. 507+30.90  
 Small R.E. spk. set.

53

