

O.D.O.T. DISTRICT 2 SURVEY OFFICE

PERSONNEL _____

REFERENCE NO. 53-53A-53B SHEET 60 OF 68

NOTES HUSS

H.C. VAN DUSEN

DATE 6-10-97

ROUTE U.S. 24

R.C. MOSEK

WEATHER Sunny

COUNTY LUCAS

TEMP. + 67°F

TOWNSHIP WATERVILLE

SECTION 18

T 6 N R 10 E

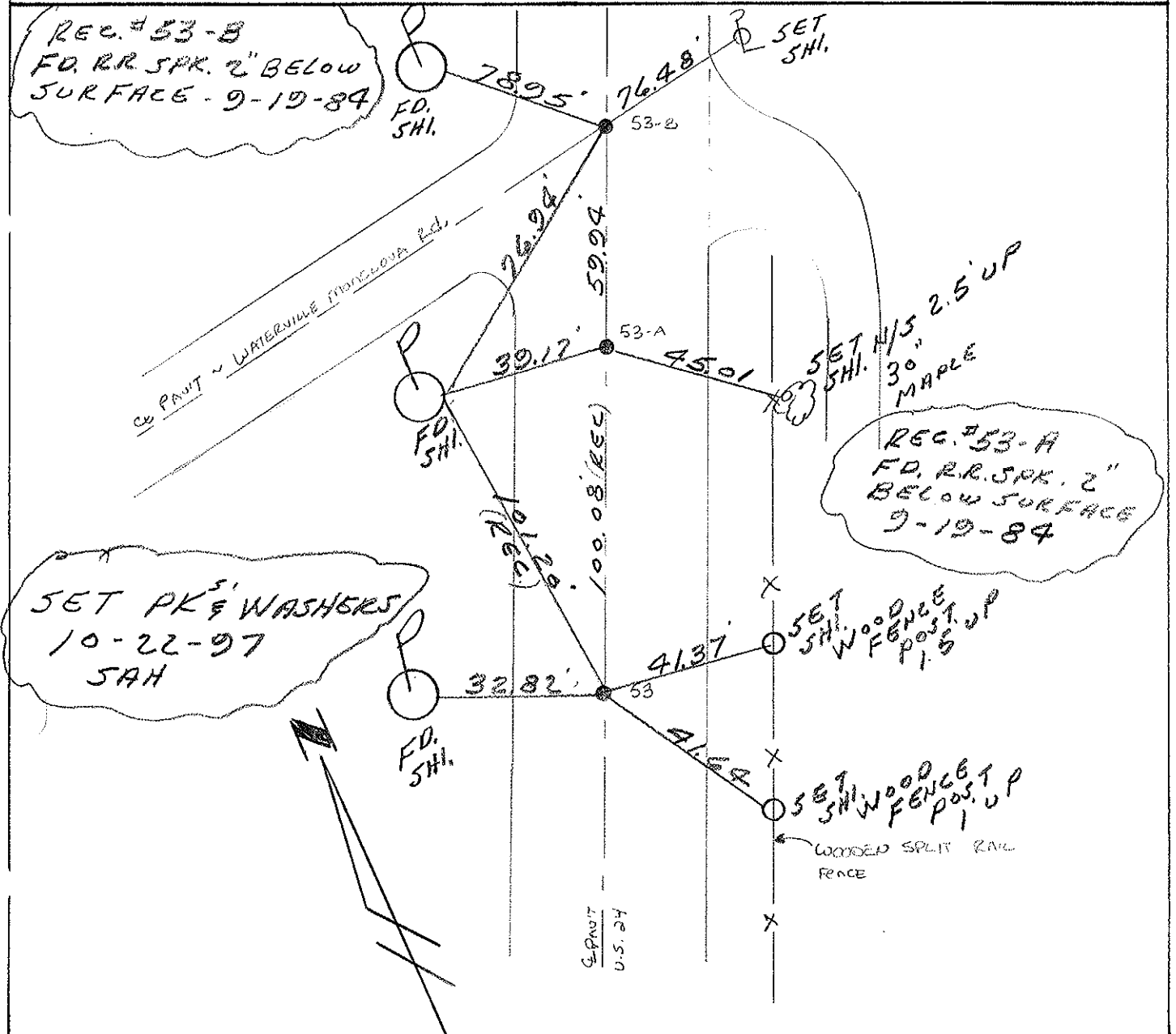
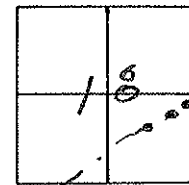
TYPE MONUMENT 53-B PKW

ON SURFACE - BELOW 53-ON SURFACE
53-A ~ 53-B - 2" BELOW

LEFT- & PAW'T. - RIGHT 53 - 0.4' RT. CL
53-A ~ 53-B - ON CL

TO _____ EDGE PAVEMENT 53 - 13.2' RT
53A - 12.4' RT
53B - 11.8' RT

S.L.M. 53 - 506 + 99.92 ~ 53-A - 508 + 00 - 53-B - 508 + 89.94



County Lucas S.R. US#24

Date 26 June 84

Township Waterville

Weather Fair

Section 31

Temp. 65°

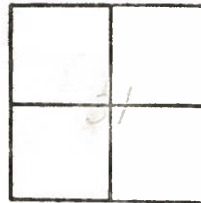
T N, R E

Personnel I. Stone

53A, B P. Neusser

R. Michalak

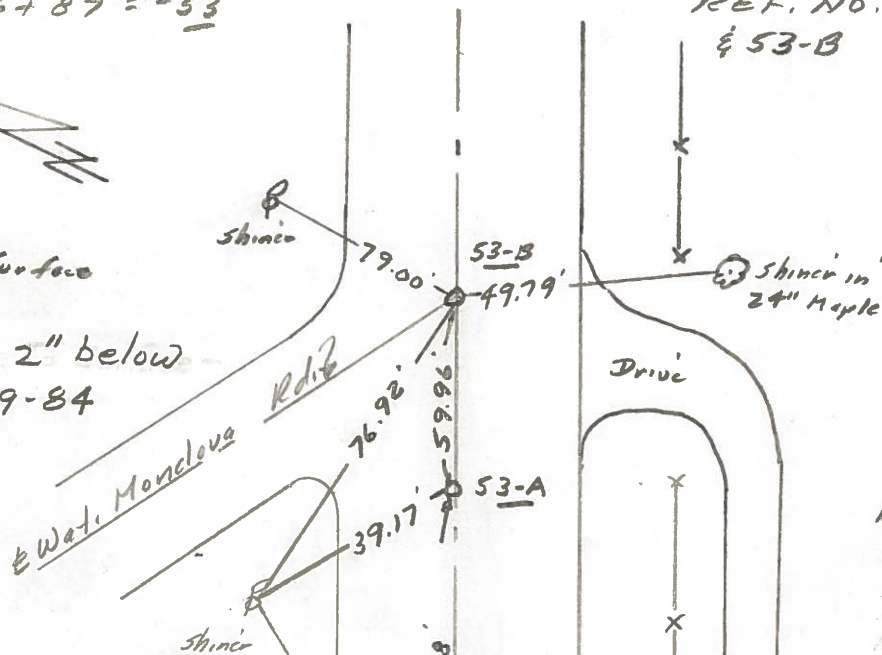
D. Curtis



SLM Sta. 506+87 = #53

REF. NO. 53 & 53A & 53-B

Ref # 53-B
Fd RR Spk. to Surface
Set
Fd. R.R. Spk. 2" below
Surface - 9-19-84



Ref # 53-A
Fd RR Spk to Surface
Set
Fd. R.R. Spk. 2"
below surface
9-19-84

Ref # 53
Fd. PK Nail to Surface
Set PK Nail
11.9' to N. edge put.
12.2' to S. edge put.

Reset P.K. Nail to Surface -
9-19-84

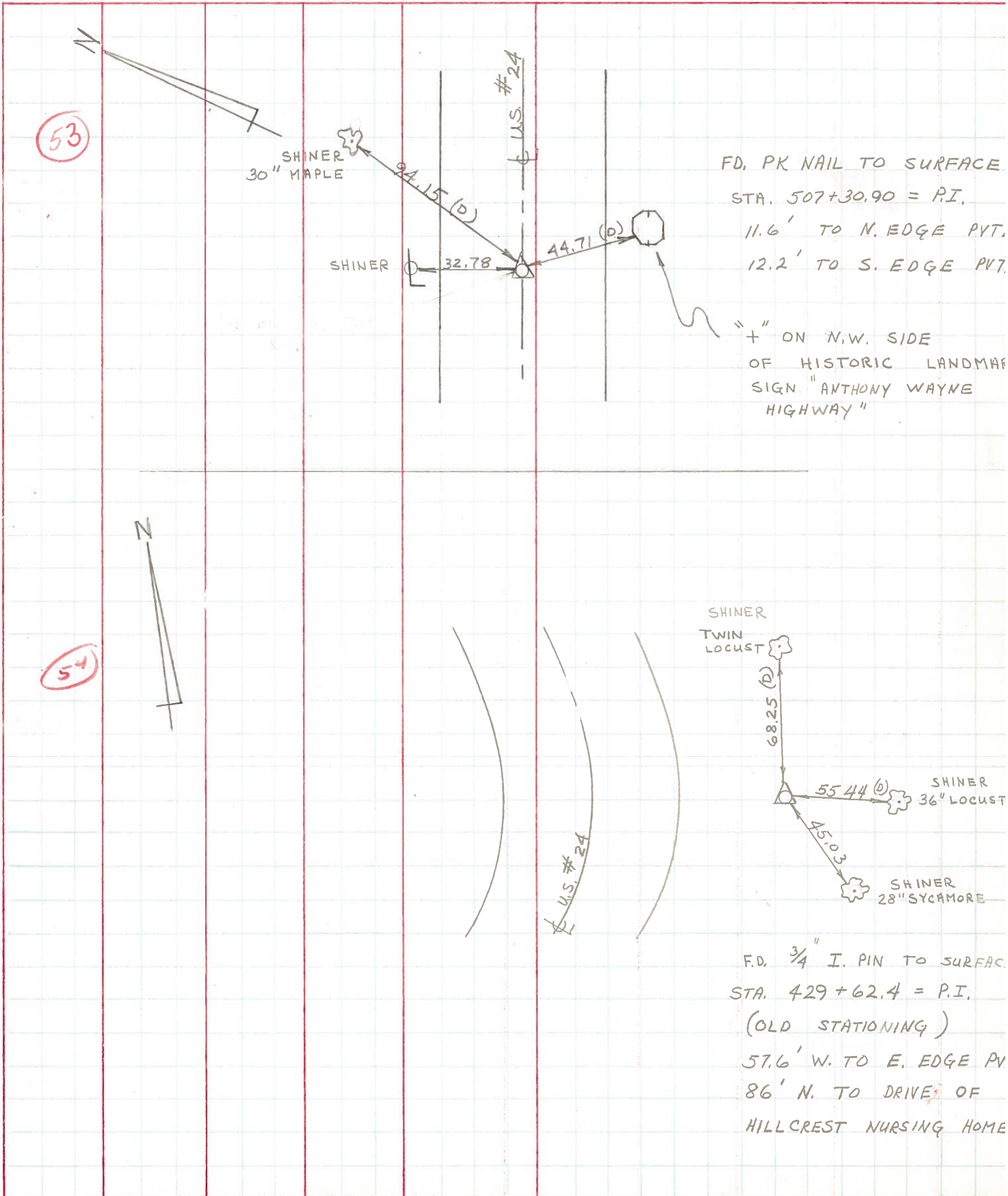
US #24

" on NW side
steel historic
sign post

Shiner in
wood fence post

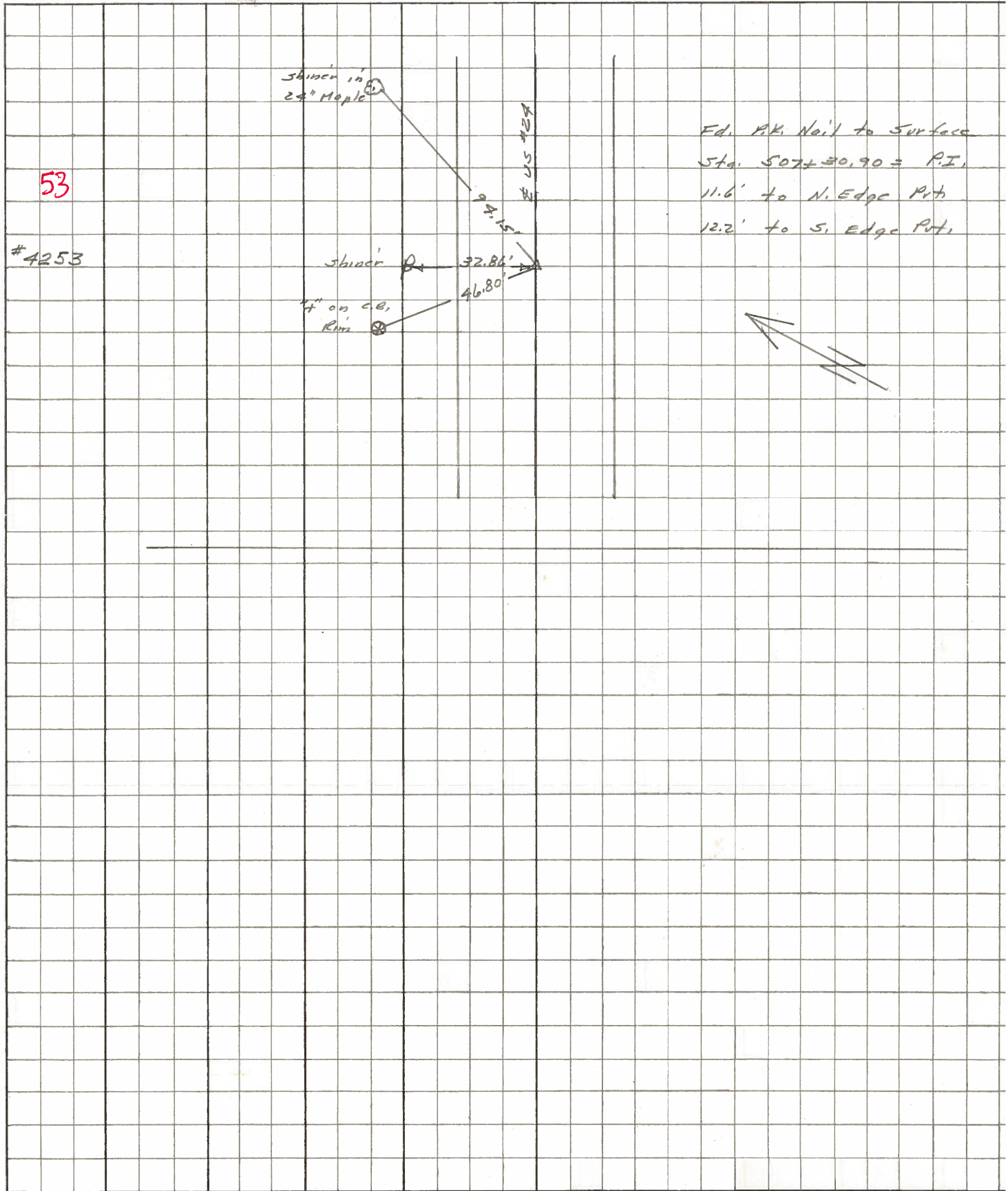
PERSONNEL	TITLE	PERSONNEL	TITLE	COUNTY	LUCAS	DATE	JULY 8, 1971
D. CURTIS				S. R.	U.S. #24	WEATHER	CLOUDY
D. STEVENS				SEC.		TEMP.	70±
R. BRANNAN							

DESCRIPTION	REFERENCES TO CONTROL POINTS	JOB NO.
	LEFT CENTER LINE RIGHT	



PERSONNEL	TITLE	PERSONNEL	TITLE	COUNTY	<u>LUCAS</u>	DATE	<u>May 68</u>
<u>Stone</u>	<u>Notes</u>			S. R.	<u>#27</u>	WEATHER	<u>Fair</u>
<u>Beck</u>	<u>Flag</u>			SEC.		TEMP.	
<u>Michalak</u>	<u>Tape</u>						
<u>Schroder</u>	<u>Tape</u>						

DESCRIPTION References to Control Points JOB NO. _____



PERSONNEL TITLE PERSONNEL TITLE

COUNTY Lucas DATE 8 Feb. 66

Shane _____ Schroder _____

S. R. #24 WEATHER Damp

Danno _____ _____

Beck _____ _____

SEC. _____ TEMP. 35°

Grindley _____ _____

DESCRIPTION Refs. To Control Points JOB NO. _____

LEFT CENTER LINE RIGHT

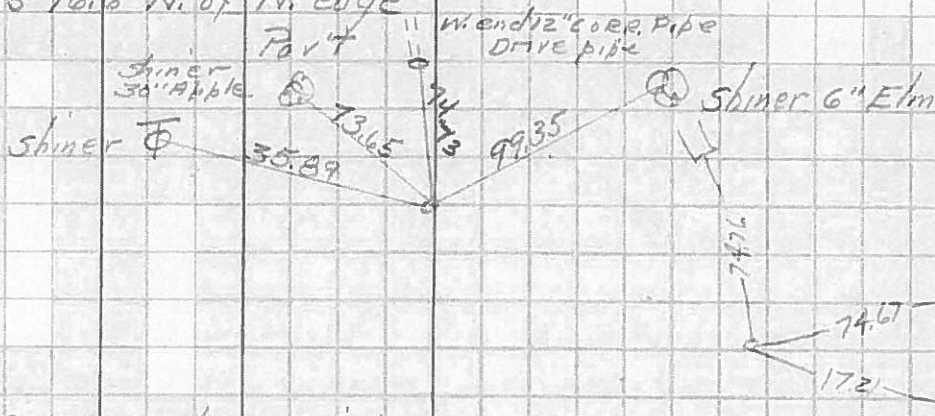
DESCRIPTION	LEFT	CENTER LINE	RIGHT
✓ 500+72.22 = P.I.	Ed. 3/4" I.P.	73.67	N.E. To Shiner in 24" Stamp (P)
52	at Surface	72.39'	N. To Shiner in P.P. (D)
	27' N. of N. Edge Put.	23.20'	N.W. To "f" on Lamp Post (P)
		53.82'	
507+30.90 = P.I.		94.15'	N.E. To Shiner in 24" Maple (D)
✓ 53	Ed. PK Nail	32.86'	N. To Shiner in P.P. (D)
12.2	at Surface	46.80'	N.W. To "f" on Riv. of Catch Basin (D)

PERSONNEL	TITLE	PERSONNEL	TITLE	COUNTY	DATE
Silvester				LUCAS	1958
#				#24	WEATHER
CREW				SEC.	TEMP.

DESCRIPTION	LEFT	CENTER LINE	RIGHT	JOB NO.
-------------	------	-------------	-------	---------

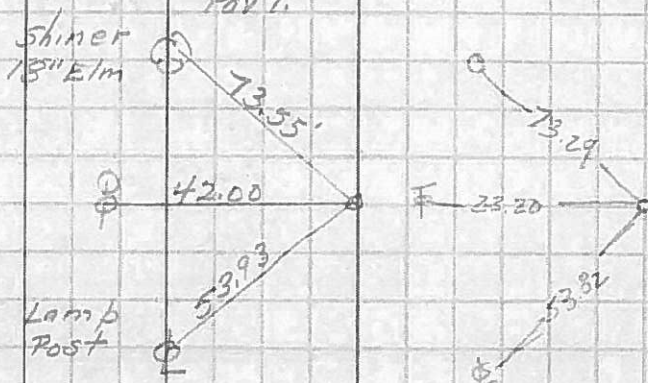
P.I. Sta. 468+79.43 Set Iron Pipe
 Note: P.I. is 16.6' N. of N. edge

51



P.I. Sta. 500+92.22 Set Iron Pipe
 Note: P.I. is 27.0' N. of N. edge of Pav't.

52



P.I. Sta. 507+30.90
 Small R.E. spk. set.

53

