

# O.D.O.T. DISTRICT 2 SURVEY OFFICE

PERSONNEL

REFERENCE NO. 54 & 54-A

SHEET 62 OF 68

NOTES HUSS

H.C. VANDUSEN

DATE 6-10-97

ROUTE U.S. 24

R.C. MOSEY

WEATHER SUNNY

COUNTY LUCAS

TEMP. +70°F

TOWNSHIP WATERVILLE

SECTION \_\_\_\_\_

T6 NR 10 E

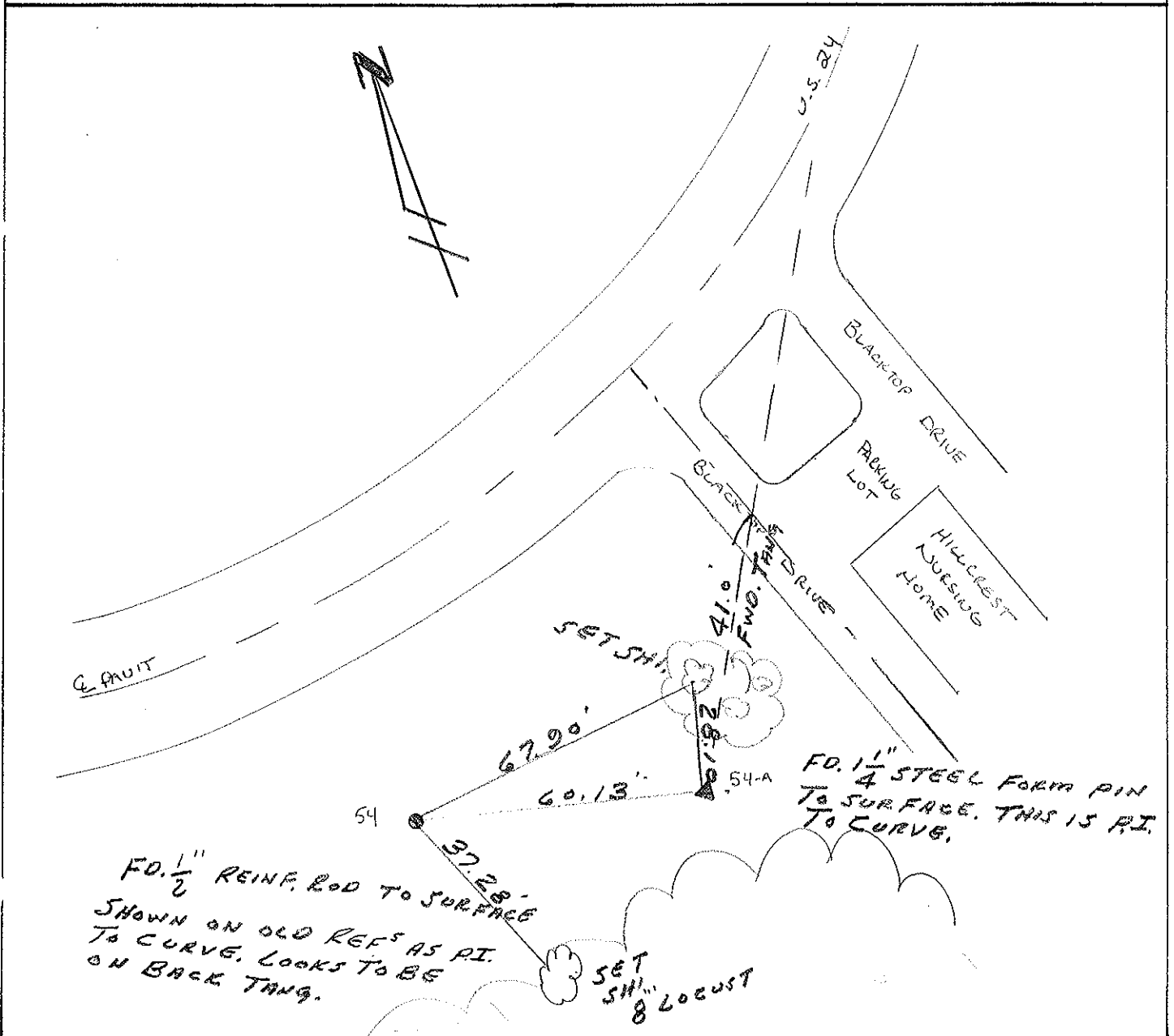
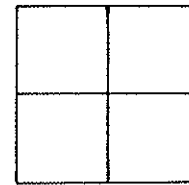
TYPE MONUMENT 54 - 1/2" REBAR  
54-A - 1/4" STEEL FORM PIN

ON SURFACE - ~~BELOW~~ BOTH

LEFT - ~~CL~~ PAV'T. - RIGHT 54 ~ 71.0 FT OF CL

60' N. TO S. EDGE PAVEMENT

S.L.M. 54 ~ 529+32    54-A ~ 529+88



County Lucas S.R. US#24

Date 26 June 84

Township Waterville

Weather Fair

Section \_\_\_\_\_

Temp. 67°

T\_N, R\_E

Personnel L. Stone

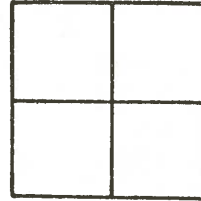
54

P. Nusco

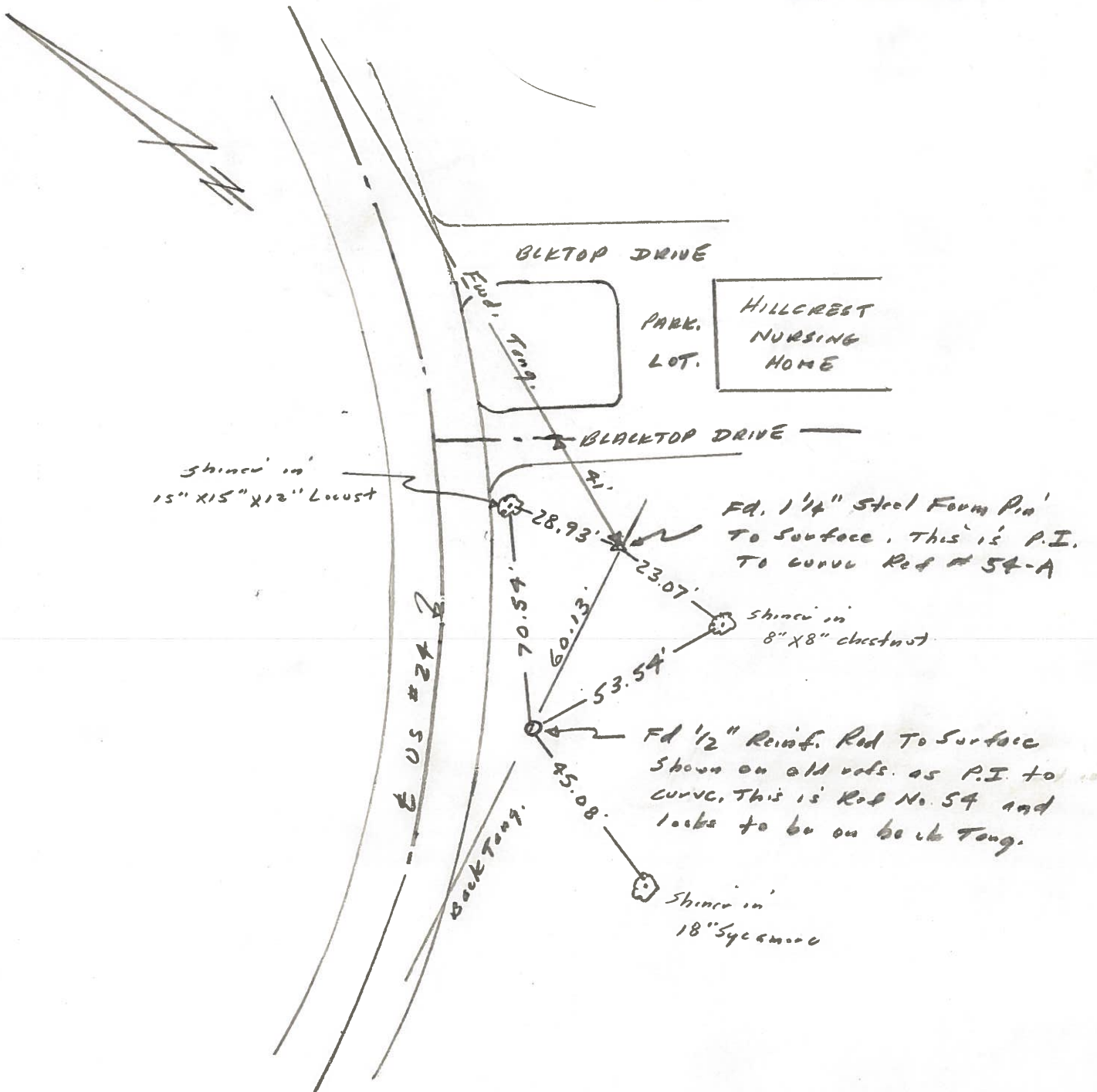
54A

R. Michalek

D. Curtis

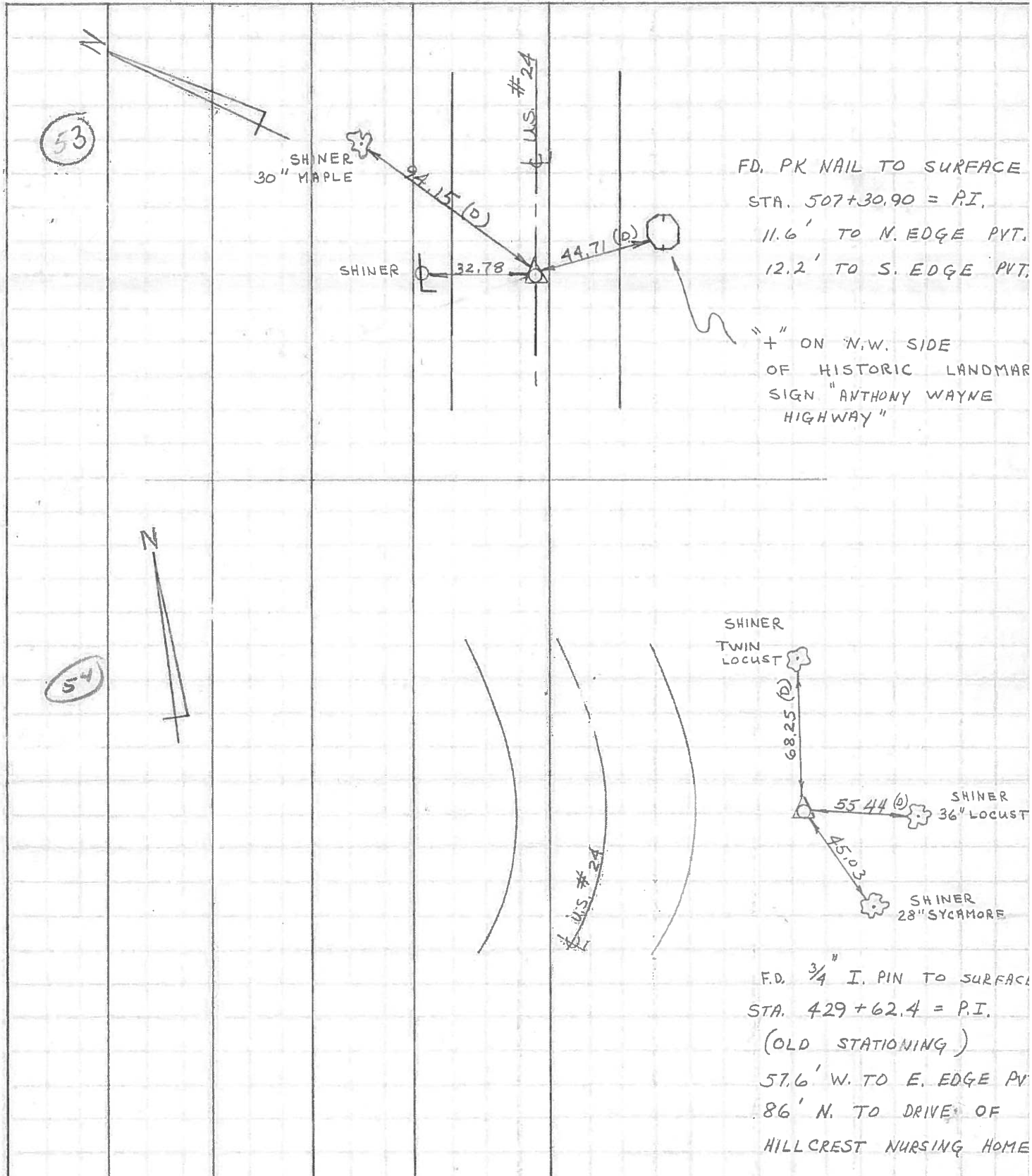


Ref No 54 & 54-A



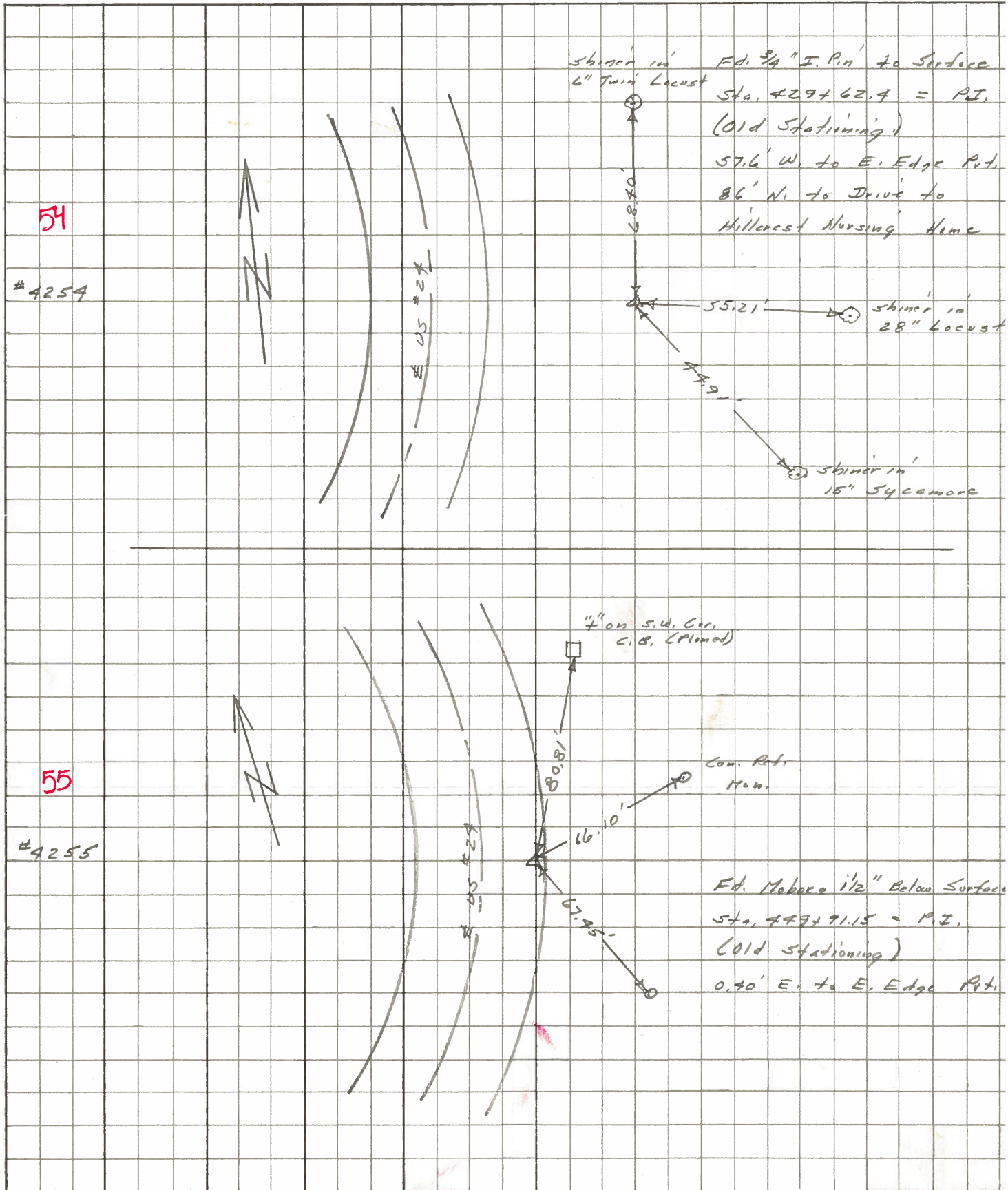
PERSONNEL	TITLE	PERSONNEL	TITLE	COUNTY	LUCAS	DATE	JULY 8, 1971
D. CURTIS				S. R.	U.S. #24	WEATHER	CLOUDY
D. STEVENS				SEC.		TEMP.	70±
R. BRANNAN							

DESCRIPTION	REFERENCES TO CONTROL POINTS	JOB NO.
	LEFT CENTER LINE RIGHT	



PERSONNEL	TITLE	PERSONNEL	TITLE	COUNTY	DATE	WEATHER	TEMP.
Stone	NOTES			Lucas	May 68	Fair	
Beck	Flag			#27			
Michalak	Tape						
Schroder	Tape						

DESCRIPTION References to Control Points JOB NO. \_\_\_\_\_



PERSONNEL	TITLE	PERSONNEL	TITLE	COUNTY	Lucas	DATE	9 Feb. 66
Stone		Schroder		S. R.	#24	WEATHER	Damp
Drono				SEC.		TEMP.	44°
Beck							
Brindley							
DESCRIPTION	Pts. To Control Pts.			JOB NO.			
	LEFT	CENTER LINE	RIGHT				

	LEFT	CENTER LINE	RIGHT
427+62.9 = P.I.		55.21'	E. To Shiner in 28" Locust (P)
54	Ed. 3/4" I.P.	44.91'	S.E. To Shiner in 13" Sycamore (P)
	at surface	86.0'	N. To S. Edge Drive to Old Bridge
449+71.15 = P.I.		80.81'	N.E. To "4" on S.W. Cor. C.B. (P)
55	Ed. MoBoRa Mon.	66.10'	E.N.E. To Con. Mon. (D)
	1 1/2" Below Pt.	67.45'	S.E. To Con. Mon. (D)
	10' W. of E. Edge Pt.		
468+34.95 = P.O.T. (E South St.)		94.49'	W.S.W. To Shiner in P.P. (D)
56	Ed. MoBoRa Mon.	95.97'	N.W. To Shiner in 40" Tree (D)
	at surface	62.86'	E.S.E. To Shiner in P.P. (D)
473+54.58 = P.O.T. (E S.R. #69)		35.03'	N. To Shiner in L. Post (D)
57	Ed. MoBoRa Mon.	64.14'	S.W. To Shiner in T.P. (D)
	To surface	52.98'	E.S.E. To Shiner in P.P. (D)
478+75.63 = P.O.T. (E Mechanic St.)		26.57'	N. To Chiseled "4" on Ctr. Grots of C.B. (D)
58 A	Ed. 3/4" I.P.	50.39'	S.E. To Shiner in P.P. (D)
	2" Below Surface	77.10'	S. To Chiseled "4" on N.E. Cor. C.B. (D)
	8.4' West of W. Curb	68.04'	E. To R.R. Spk. & Third St. (D)
58 B	Int. Mechanic St. & Third St.	68.04'	W. To 3/4" I.P. & Mechanic & S.R. #24 (D)
		26.51'	N.N.E. To Near Edge M.H. Rim (D)
	Ed. R.R. Spk.	74.47'	S.E. To "4" on Con. Curb @ Walk (D)
	To surface	42.57'	S.W. To Shiner in P.P. (D)