

O.D.O.T. DISTRICT 2 SURVEY OFFICE

PERSONNEL

REFERENCE NO. 55

SHEET 63 OF 68

NOTES HUSS

H.C. VAN DUJEN

DATE 6-10-97

ROUTE US 24

R.C. MOSEK

WEATHER SUNNY-CLEAR

COUNTY LUCAS

TEMP. +70° F

TOWNSHIP WATERVILLE

SECTION _____

T6 N R 10 E

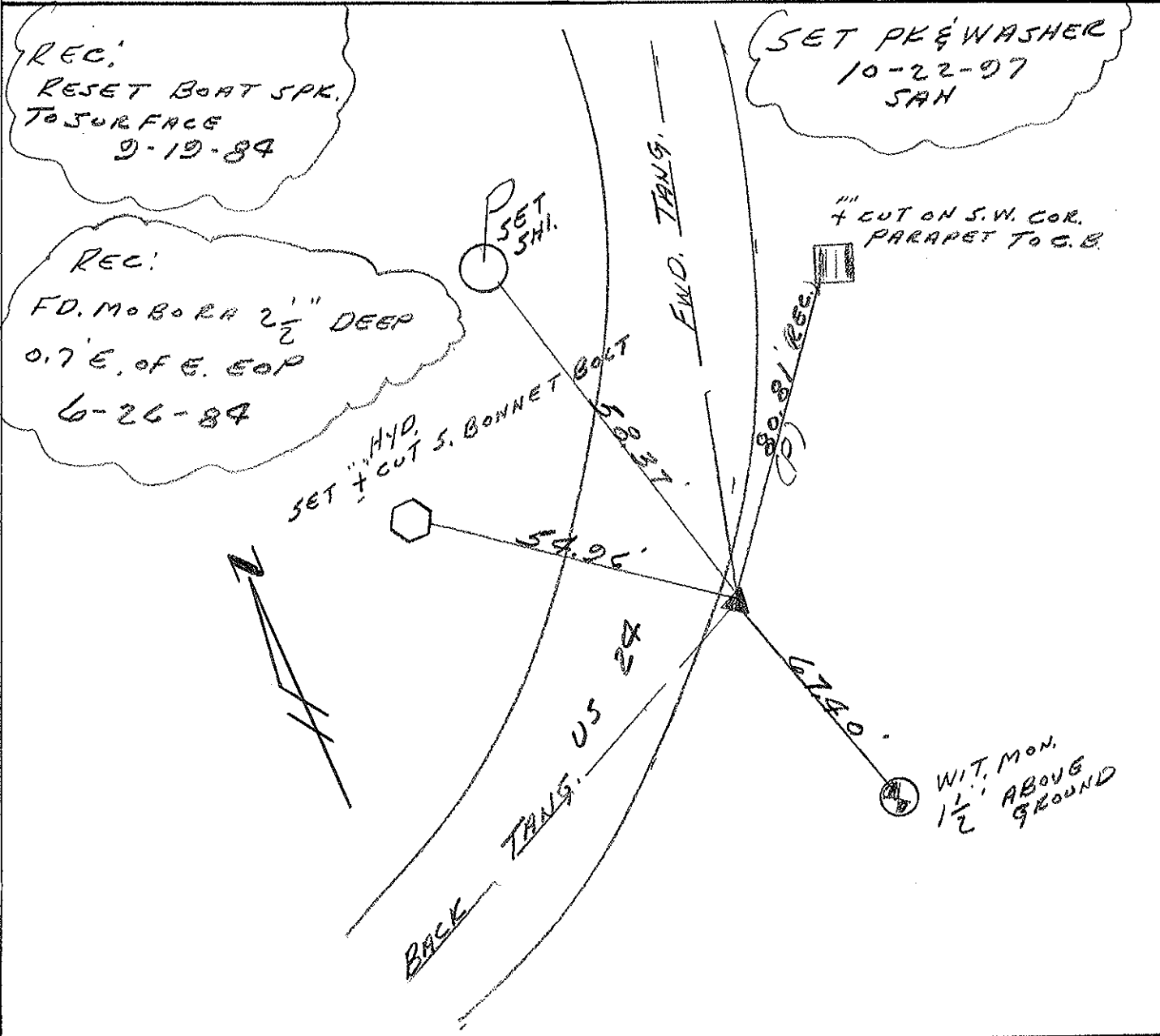
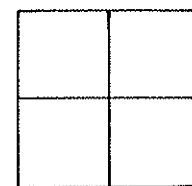
TYPE MONUMENT PK/WASHER

ON SURFACE - BELOW YES

LEFT - 0 PAV'T. - RIGHT 13'

0.9 N. TO S. EDGE PAVEMENT

S.L.M. 549+86



O.D.O.T. DISTRICT 2 SURVEY OFFICE

SHEET 7 OF 7

County Lucas S.R. US #24

Date 26 June 84

Township Waterville

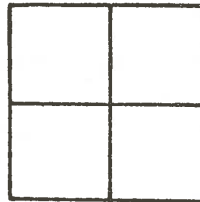
Weather Fair

Section _____

Temp. 68°

T N, R E

Personnel I. Stone



P. Neuser

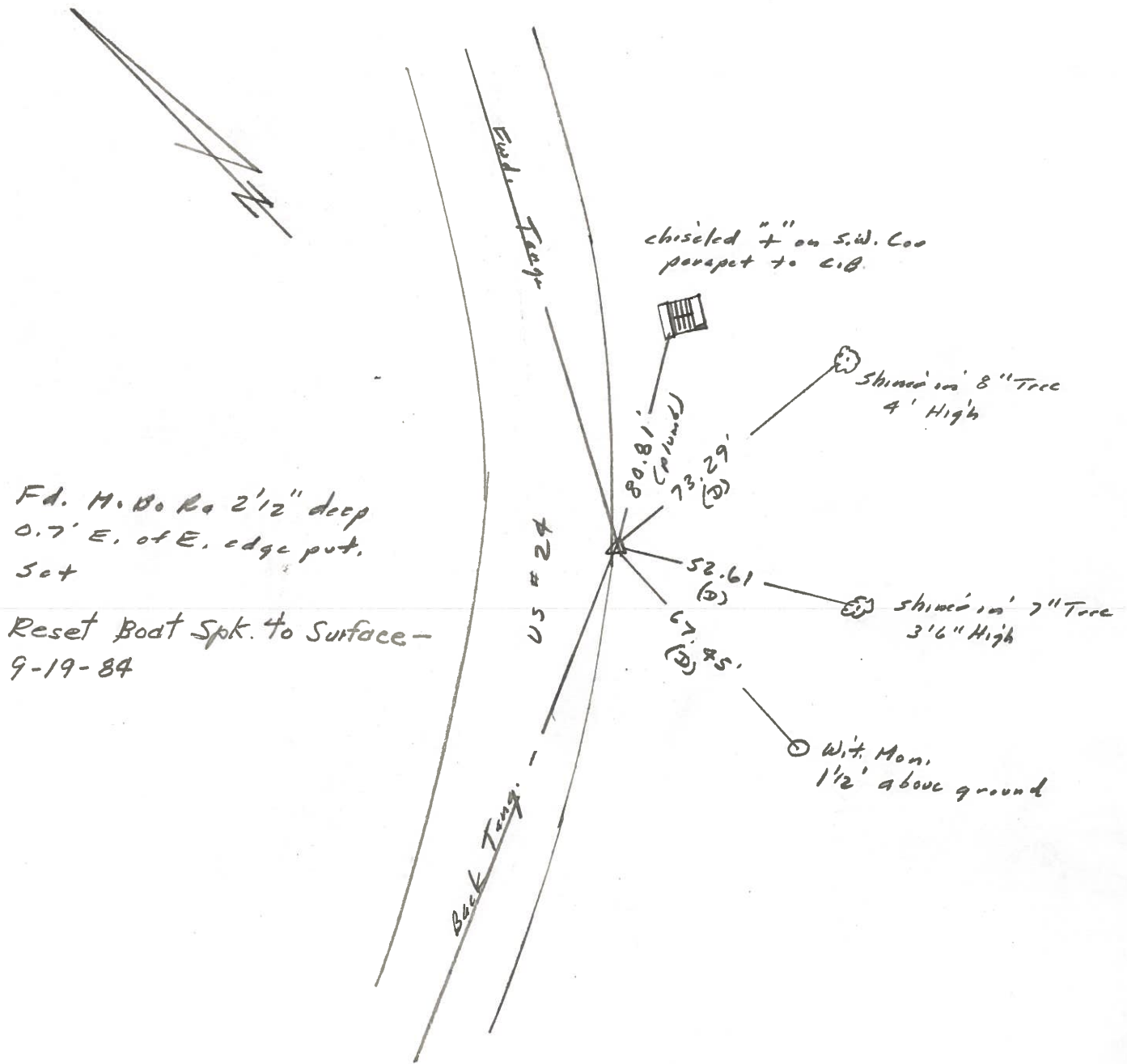
55

R. Michalek

D. Curtis

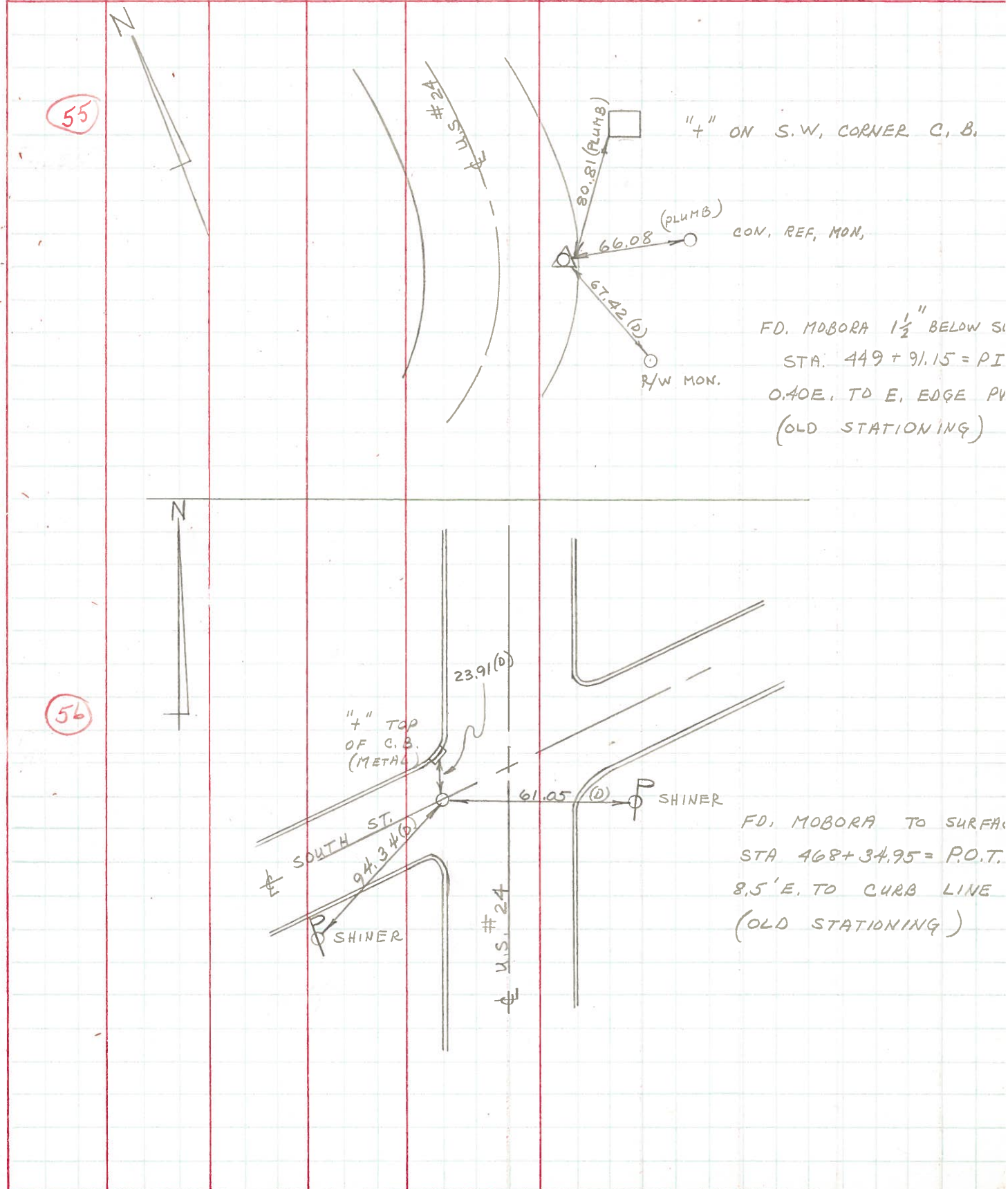
SLM Sta. 550+27

REF. NO. 55



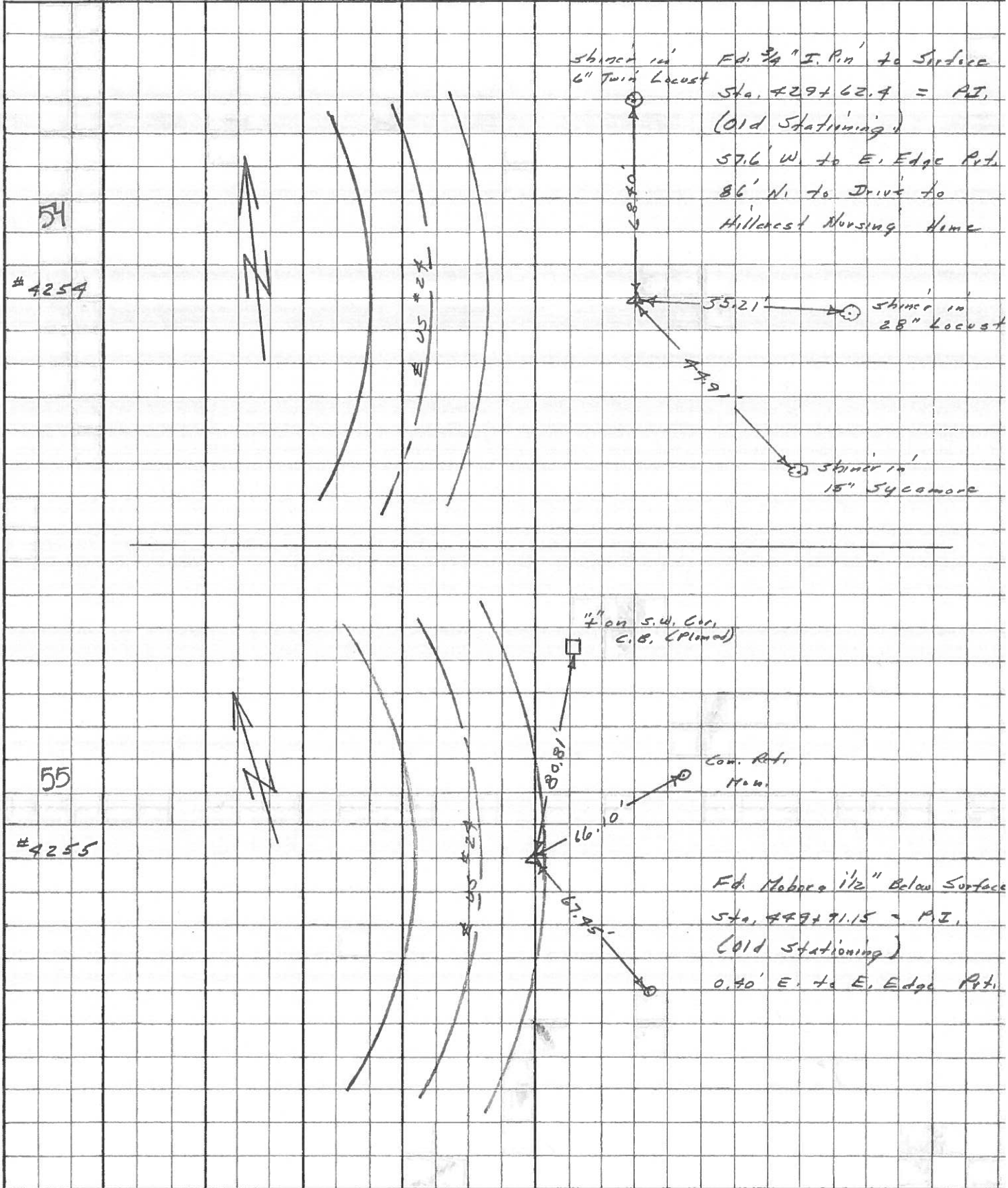
PERSONNEL	TITLE	PERSONNEL	TITLE	COUNTY	LUCAS	DATE	JULY 8, 197
D. CURTIS				S. R.	U.S. #24	WEATHER	CLOUDY
D. STEVENS				SEC.		TEMP.	± 70
R. BRANNAN							

DESCRIPTION	REFERENCES TO CONTROL POINTS	JOB NO.
	LEFT CENTER LINE RIGHT	



PERSONNEL	TITLE	PERSONNEL	TITLE	COUNTY	DATE
Stone	Notes			Lucas	May 68
Beck	Flag			S. R. #27	WEATHER Fair
Michalak	Tape			SEC.	TEMP.
Schroder	Tape				

DESCRIPTION References to Control Points JOB NO. _____



PERSONNEL Stone TITLE _____ PERSONNEL Schrader TITLE _____ COUNTY Lucas DATE 9 Feb. 66
Dunn _____ S. R. #29 WEATHER Damp
Beck _____ SEC. _____ TEMP. 44°
Bridley _____ DESCRIPTION Pts. To Control Pts. JOB NO. _____

	LEFT	CENTER LINE	RIGHT
429+62.9 = P.I.		55.21'	E. To Shiner in 28" Locust (P)
54	Ed. 3/4" I.P. at surface	47.91'	S.E. To Shiner in 13" Sycamore (P)
		86.0'	N. To S. Edge Drive to Old Bridge
449+91.15 = P.I.		30.81'	N.E. To "4" on S.W. Cor. C.B. (P)
55	Ed. M. Bo. Ra. Mon. 1 1/2" Below Pot.	66.10'	E.N.E. To Cen. Mon. (D)
	70' W. of E. Edge Pot.	67.45'	S.E. To Cen. Mon. (D)
468+34.95 = P.O.T. (E South St.)		94.44'	W.S.W. To Shiner in P.P. (D)
56	Ed. M. Bo. Ra. Mon. at surface	95.77'	N.W. To Shiner in 40" Tree (D)
		62.86'	E.S.E. To Shiner in P.P. (D)
473+34.38 = P.O.T. (E S.R. #29)		35.03'	N. To Shiner in L. Post (D)
57	Ed. M. Bo. Ra. Mon. to surface	64.14'	S.W. To Shiner in T.P. (D)
		52.98'	E.S.E. To Shiner in P.P. (D)
478+75.63 = P.O.T. (E Mechanic St.)		26.57'	N. To Chiseled "4" on Ctr. Grote of C.B. (D)
58A	Ed. 3/4" I.P. 2" Below surface	50.39'	S.E. To Shiner in P.P. (D)
	8.4' west of W. Curb	77.10'	S. To Chiseled "4" on N.E. Cor. C.B. (D)
		68.04'	E. To R.R. Spk. & Third St. (D)
58B	Int. Mechanic St. & Third St. Ed. R.R. Spk. to surface	68.04'	W. To 3/4" I.P. & Mechanic & S.R. #29 (D)
		26.51'	N.N.E. To Near Edge M.H. Rim (D)
		44.47'	S.E. To "4" on Cen. Curb @ Walk (D)
		42.57'	S.W. To Shiner in P.P. (D)

PERSONNEL TITLE PERSONNEL TITLE

COUNTY Lucas DATE 3-13-53

S. R. #24 Anthony Wayne WEATHER

SEC. B & Waterville TEMP.

DESCRIPTION

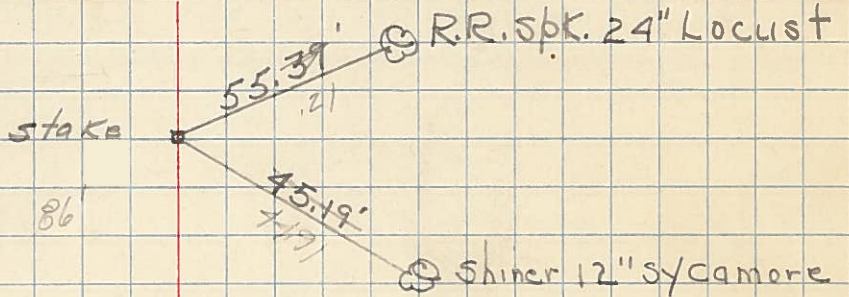
LEFT

CENTER LINE

RIGHT

JOB NO.

Sta. 429+62.4 P.I.
A = 38°-30' Lt.
Fd. pipe OK.

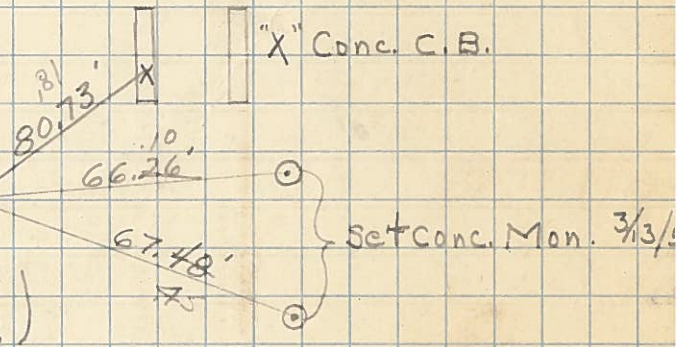


✓ Sta. 449+91.15 P.I.
A = 11°-48' Lt.
D = 1°00
T = 592.10
L = 1180.00
55

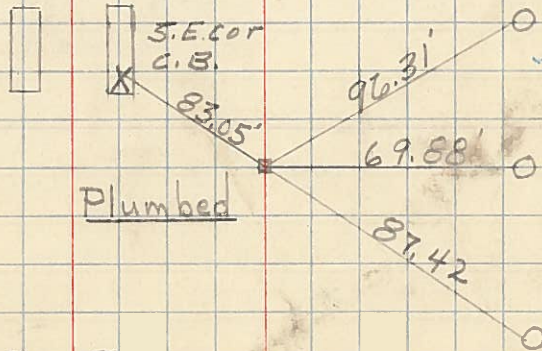
OK

Fd. - Set Mobara Mon. 3/20/53 (on Pav't 0.40' W.)

R.R. Spk.



Sta. 443+99.05 P.C.
Set Tacked Hub
1/2/52



Conc. C.B.

Conc. C.B.

Sta. 455+79.05 P.T.
Fd. Iron Pin App. 2' deep
Fd. OK.

