

O.D.O.T. DISTRICT 2 SURVEY OFFICE

PERSONNEL

REFERENCE NO. 56

SHEET 64 OF 68

NOTES Huss

H.C. VAN DUZEN

DATE 6-10-97

ROUTE US 24

R.C. MOSEY

WEATHER BUNNY-CLEAR

COUNTY LUCAE

TEMP. +75° F

TOWNSHIP WATERVILLE

SECTION \_\_\_\_\_

T6 NR 10 E

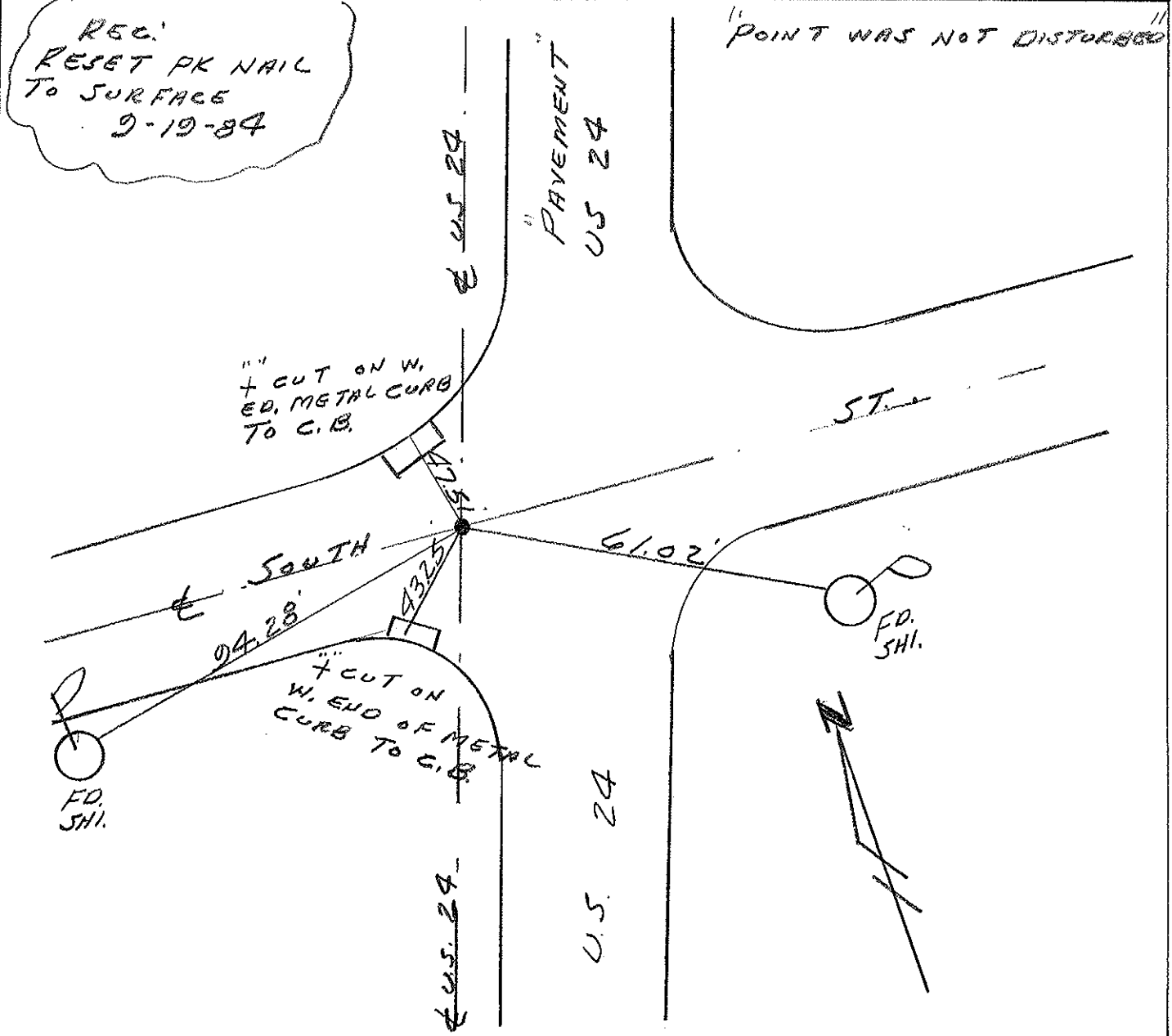
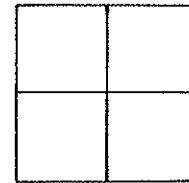
TYPE MONUMENT PK/WASHER

ON SURFACE - BELOW YES

LEFT- & PAV'T. - RIGHT 12.0'

8.5 TO EDGE PAVEMENT LT. OF LT. 60P

S.L.M. 568+81



O.D.O.T. DISTRICT 2 SURVEY OFFICE

SHEET 5 OF 7

County Lucas S.R. US #24

Date 26 June 84

Township Waterville

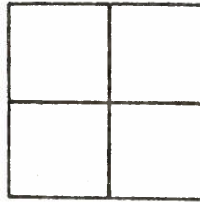
Weather Fair

Section \_\_\_\_\_

Temp. 70°

T\_N, R\_E

Personnel L. Stone



P. Neuser

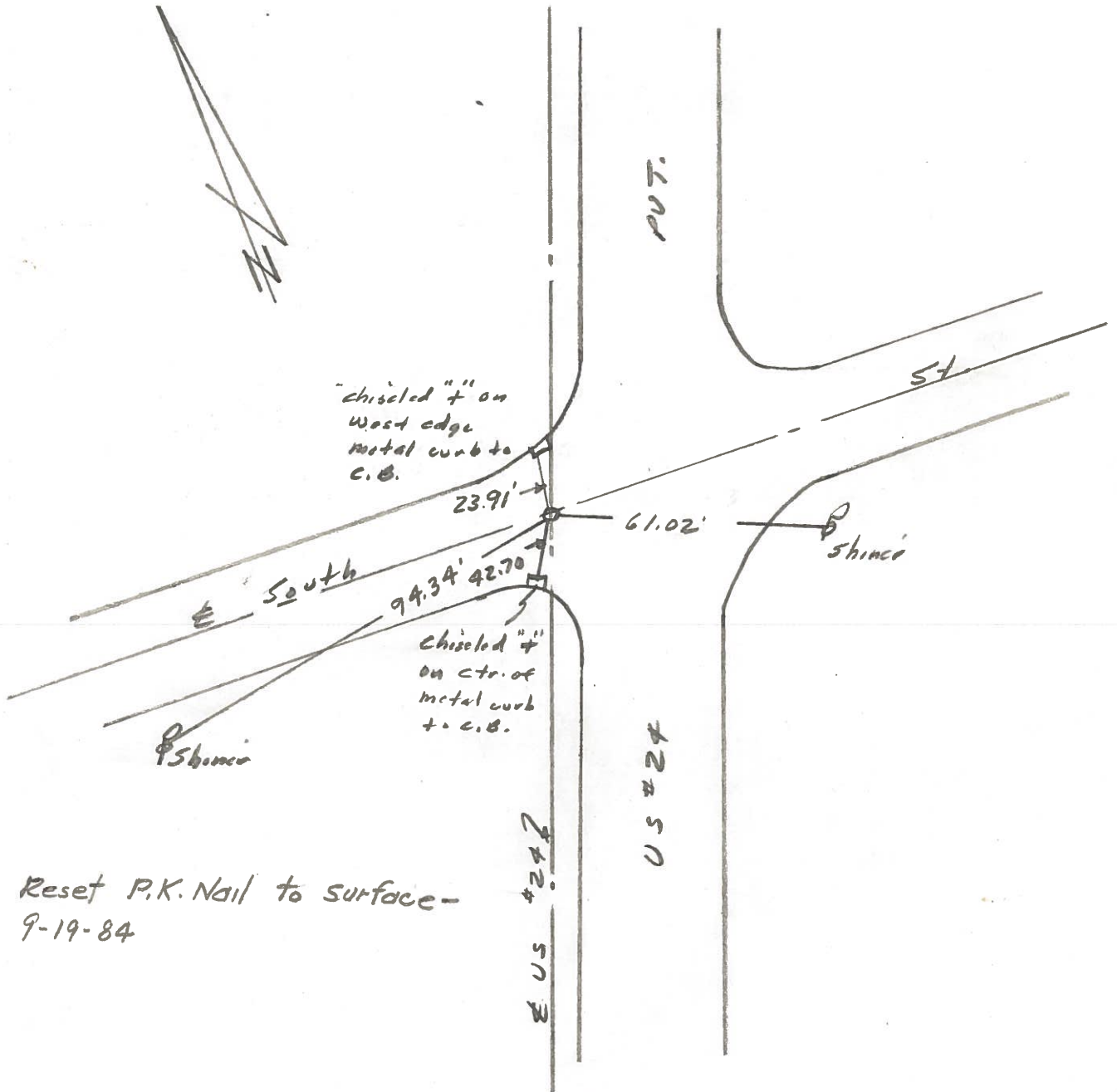
56

R. Michalak

D. Curtis

SLM Sta. 568+75

REF. NO. 56

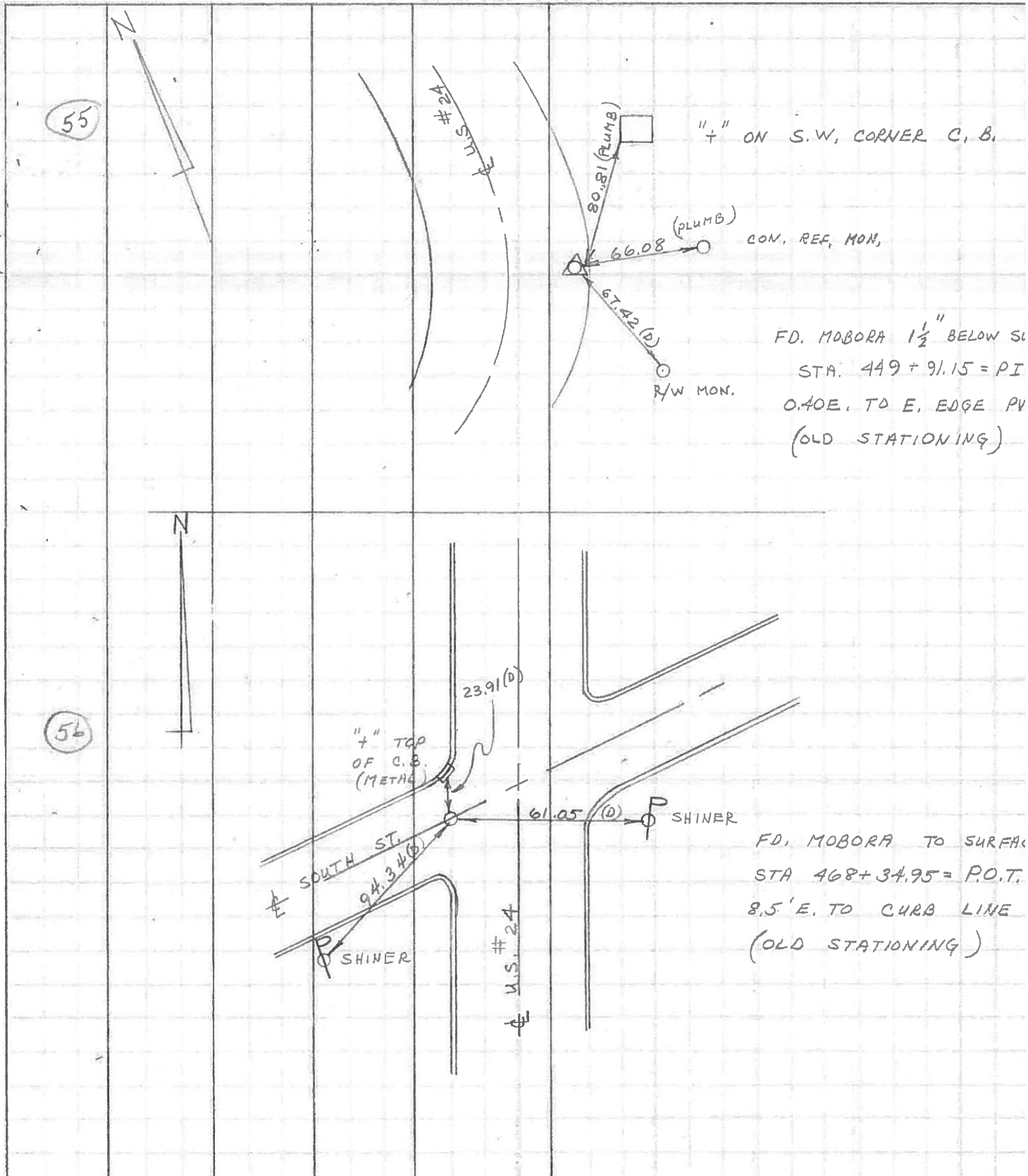


Reset P.K. Nail to surface -  
9-19-84

E US #24

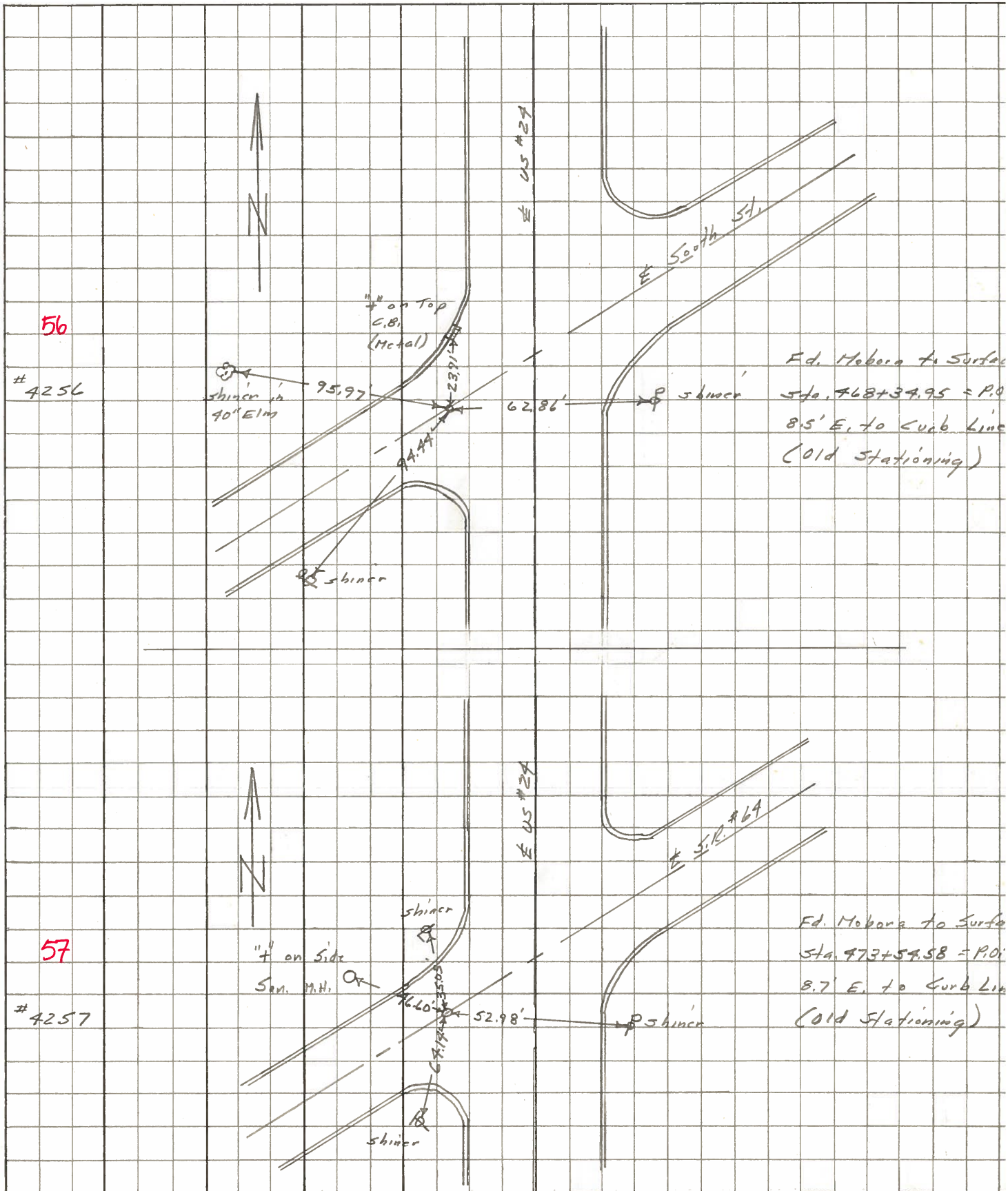
PERSONNEL	TITLE	PERSONNEL	TITLE	COUNTY	LUCAS	DATE	JULY 8, 1971
D. CURTIS				S. R.	U.S. #24	WEATHER	CLOUDY
D. STEVENS				SEC.		TEMP.	70
R. BRANNAN							

DESCRIPTION	REFERENCES TO CONTROL POINTS	JOB NO.
	LEFT                      CENTER LINE                      RIGHT	



PERSONNEL	TITLE	PERSONNEL	TITLE	COUNTY	DATE
Stone	Notes	Teal	Flag	Lucas	31 May 66
Beck	Flag			S. R. #27	WEATHER Fair
Michalak	Tape			SEC. Waterville	TEMP. 60°
Brindley	Tape				

DESCRIPTION References to Central Points JOB NO. \_\_\_\_\_



Fd. Hobara to Surface  
Sta. 768+34.95 = P.O.  
8.5' E. to Curb Line  
(Old Stationing)

Fd. Hobara to Surface  
Sta. 773+54.58 = P.O.  
8.7' E. to Curb Line  
(Old Stationing)

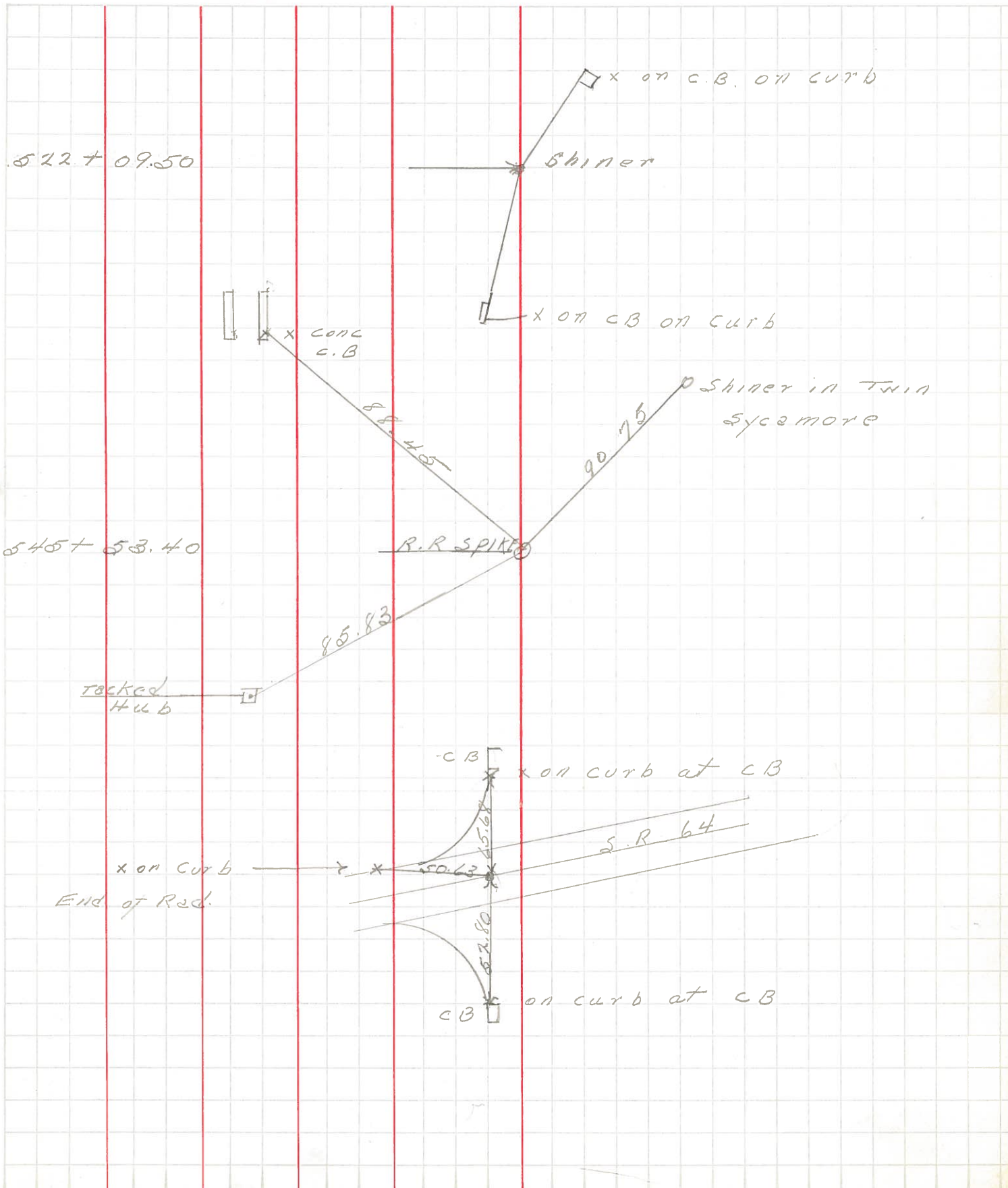
PERSONNEL TITLE PERSONNEL TITLE

COUNTY Lucas DATE \_\_\_\_\_

S. R. US 24 WEATHER \_\_\_\_\_

SEC. \_\_\_\_\_ TEMP. \_\_\_\_\_

DESCRIPTION LEFT CENTER LINE RIGHT JOB NO. \_\_\_\_\_



PERSONNEL Stone TITLE \_\_\_\_\_ PERSONNEL Schroder TITLE \_\_\_\_\_ COUNTY Lucas DATE 9 Feb. 66  
Drano \_\_\_\_\_ S. R. #27 WEATHER Damp  
Beck \_\_\_\_\_ SEC. \_\_\_\_\_ TEMP. 44°  
Bridley \_\_\_\_\_ DESCRIPTION Pts. To Control Pts. JOB NO. \_\_\_\_\_

	LEFT	CENTER LINE	RIGHT
429+62.9 = P.I.		55.21'	E. To Shiner in 28" Locust (P)
54	Ed. 3/4" I.P. at surface	47.91'	S.E. To Shiner in 13" Sycamore (P)
		86.0'	N. To S. Edge Drive to Old Bridge
447+71.15 = P.I.		80.81'	N.E. To "7" on S.W. Cor. C.B. (P)
55	Ed. H. Bo Ra Mon. 1 1/2" Below Pot. 70' W. of E. Edge Pot.	66.10'	E.N.E. To Con. Mon. (D)
		67.45'	S.E. To Con. Mon. (D)
468+3495 = P.O.T. (E South St.)		94.44'	W.S.W. To Shiner in P.P. (D)
56	Ed. H. Bo Ra Mon. At surface	75.77'	N.W. To Shiner in 40" Tree (D)
		62.86'	E.S.E. To Shiner in P.P. (D)
473+3438 = P.O.T. (E S.R. #24)		35.03'	N. To Shiner in L. Post (D)
57	Ed. H. Bo Ra Mon. To surface	64.14'	S.W. To Shiner in T.P. (D)
		52.98'	E.S.E. To Shiner in P.P. (D)
478+75.63 = P.O.T. (E Mechanic St.)		26.57'	N. To Chiseled "7" on Ctr. Gate of C.B. (D)
58A	Ed. 3/8" I.P. 2" Below surface 8.4' West of W. Curb	50.39'	S.E. To Shiner in P.P. (D)
		77.10'	S. To Chiseled "7" on N.E. Cor. C.B. (D)
		68.04'	E. To R.R. Spk. & Third St. (D)
58B	Int. Mechanic St. & Third St. Ed. R.R. Spk. To surface	68.04'	W. To 3/4" I.P. & Mechanic & S.R. #24 (D)
		26.51'	N.N.E. To Near Edge M.H. Rim (D)
		44.47'	S.E. To "7" on Con. Curb @ Walk (D)
		42.57'	S.W. To Shiner in P.P. (D)

PERSONNEL	TITLE	PERSONNEL	TITLE	COUNTY	DATE	WEATHER	TEMP.
Mennitt				Lucas	1958		
\$ crew				S. R. #24			
				SEC. Anthony Wayne Trail			

DESCRIPTION	LEFT	CENTER LINE	RIGHT	JOB NO.
-------------	------	-------------	-------	---------

Sta. 68+86	S. Brass Plate			
	38.91 E. To "T" in curb on S.E. COR.			
	34.13 S.E. To "t" in curb on S.E. COR.			
	38.28 S.S.E. To "T" in curb on S.E. COR.			

Sta. 69+54	S. Stone Mon.			
	12.72 S.W. To "T" in curb S.W. COR.			
	2.78 S. To "t" in curb S.W. COR.			
	5.21 S.E. To "t" in curb S.W. COR.			

Sta. 69+14	S. Brass Plate & South St. (S)			
	37.02 W. To "t" in curb S.W. COR.			
56	19.08 S.W. To "t" in curb S.W. COR.			
	20.72 S.S.W. To "T" in curb S.W. COR.			

Sta. 80+85	S. Brass Plate			
	13.80 S.W. To "T" in S. Curb S. lane			
	8.21 S. To "t" in S. Curb S. lane			
	13.95 S.E. To "T" in S. Curb S. lane			

Sta. 93+25	S. Brass Plate			
	3.75 S.W. To "T" in S. Curb S. lane			
	1.97 S. To "t" in Curb S. lane			
	14.37 S.E. To Nail in &			

Sta. 106+54	S. Brass Plate			
	12.43 S.W. To "T" in S. Curb S. lane			
	10.36 S. To "T" in S. Curb S. lane			
	14.26 S.E. To "T" in S. Curb S. lane			

PERSONNEL TITLE PERSONNEL TITLE

COUNTY Lucas

DATE 3-13-53

S. R. #24

WEATHER

SEC. B & Waterville

TEMP

DESCRIPTION Wit. Ties on in Lucas Co. BK. #186 Pg. 55

JOB NO.

LEFT

CENTER LINE

RIGHT

Sta 468+34.95 P.O.T.  
E South St. Waterville  
& S.H. 697  
Fd. O.K.

74.44 - W.S.W P.P.  
95.97 - N.W. 40" Tree (South)  
62.86 - E.S.E. P.P.

56

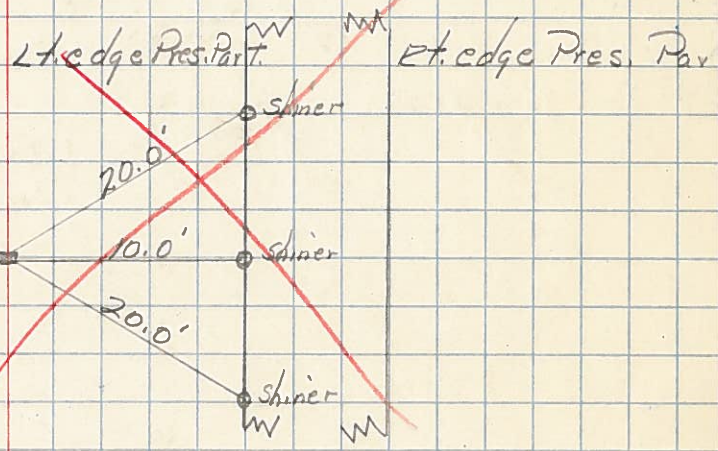
"X" Conc. Curb  
@ end Radius



E South St.

Set Monobora Mon. 3/20/53

"X" Cor.  
C.B.



No

Sta. 463+  
E Locust & S.H. 697  
Waterville

Ref.

Sta. 473+54.58 P.O.T.  
E Canal Blvd &  
Farnsworth Rd. S.R. #64  
(Brass Mon)

57