

O.D.O.T. DISTRICT 2 SURVEY OFFICE

PERSONNEL

REFERENCE NO. 57

SHEET 65 OF 68

NOTES Huss

H.C. VAN DUSEN

DATE 6-10-97

ROUTE U.S. 24

R.C. MOJER

WEATHER JUNNY CLEAR

COUNTY LUCAS

TEMP. + 75° F

TOWNSHIP WATERVILLE

SECTION _____

T. 6 N. R. 10 E

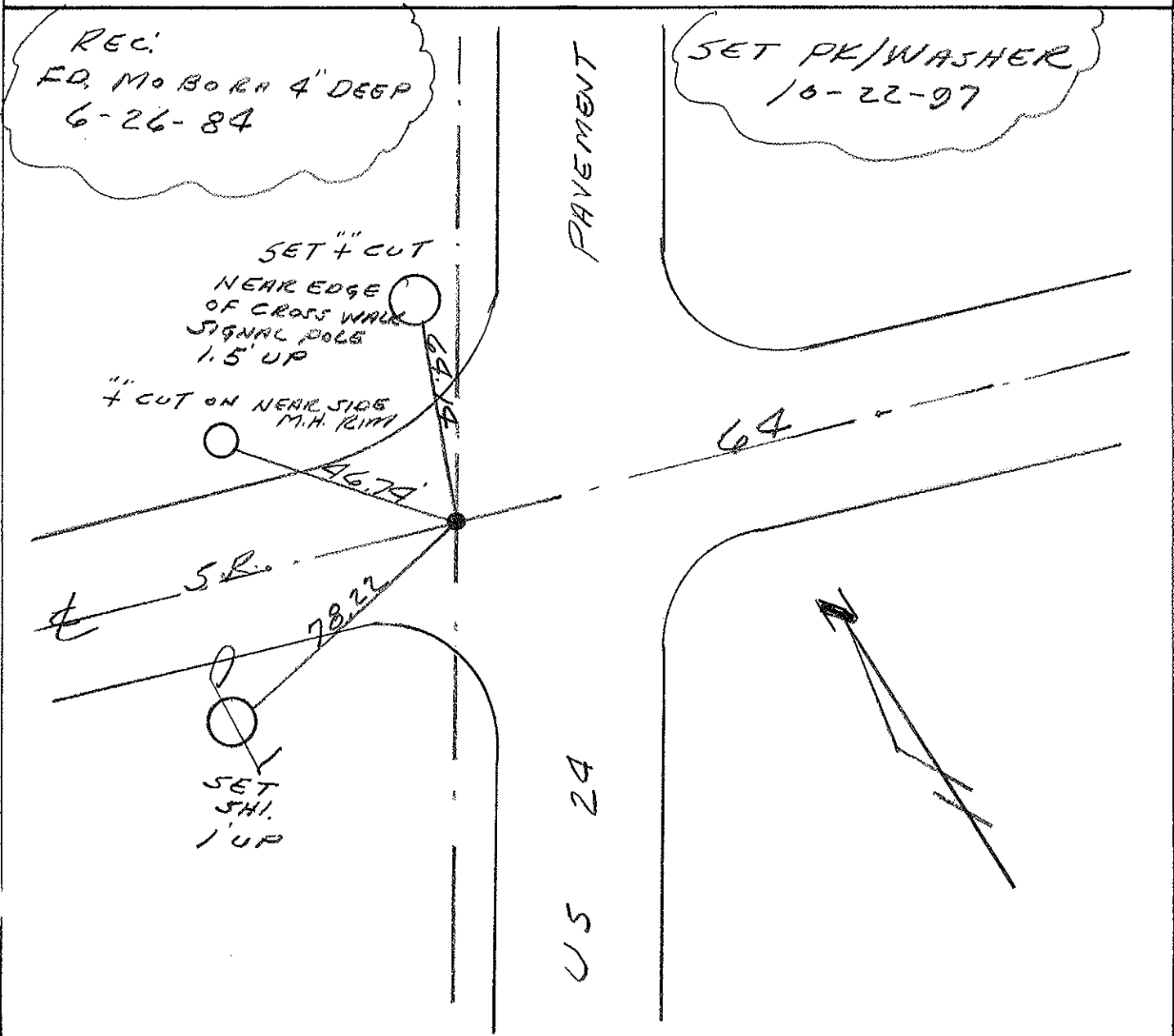
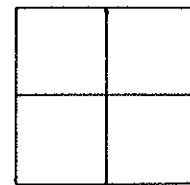
TYPE MONUMENT PK/WASHER

ON SURFACE - BELOW YES

LEFT - CL PAV'T. - RIGHT 12.0'

2' TO EDGE PAVEMENT RT. OF LT. EOP

S.L.M. 573+02



OD.O.T. DISTRICT 2 SURVEY OFFICE

SHEET 6 OF 7

County Lucas S.R. US #24

Date 26 June 84

Township Waterville

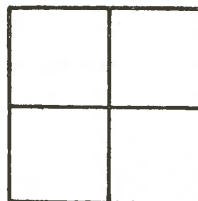
Weather Fair

Section _____

Temp. 71°

T N, R E

Personnel I. Stone



N



P. Neuse

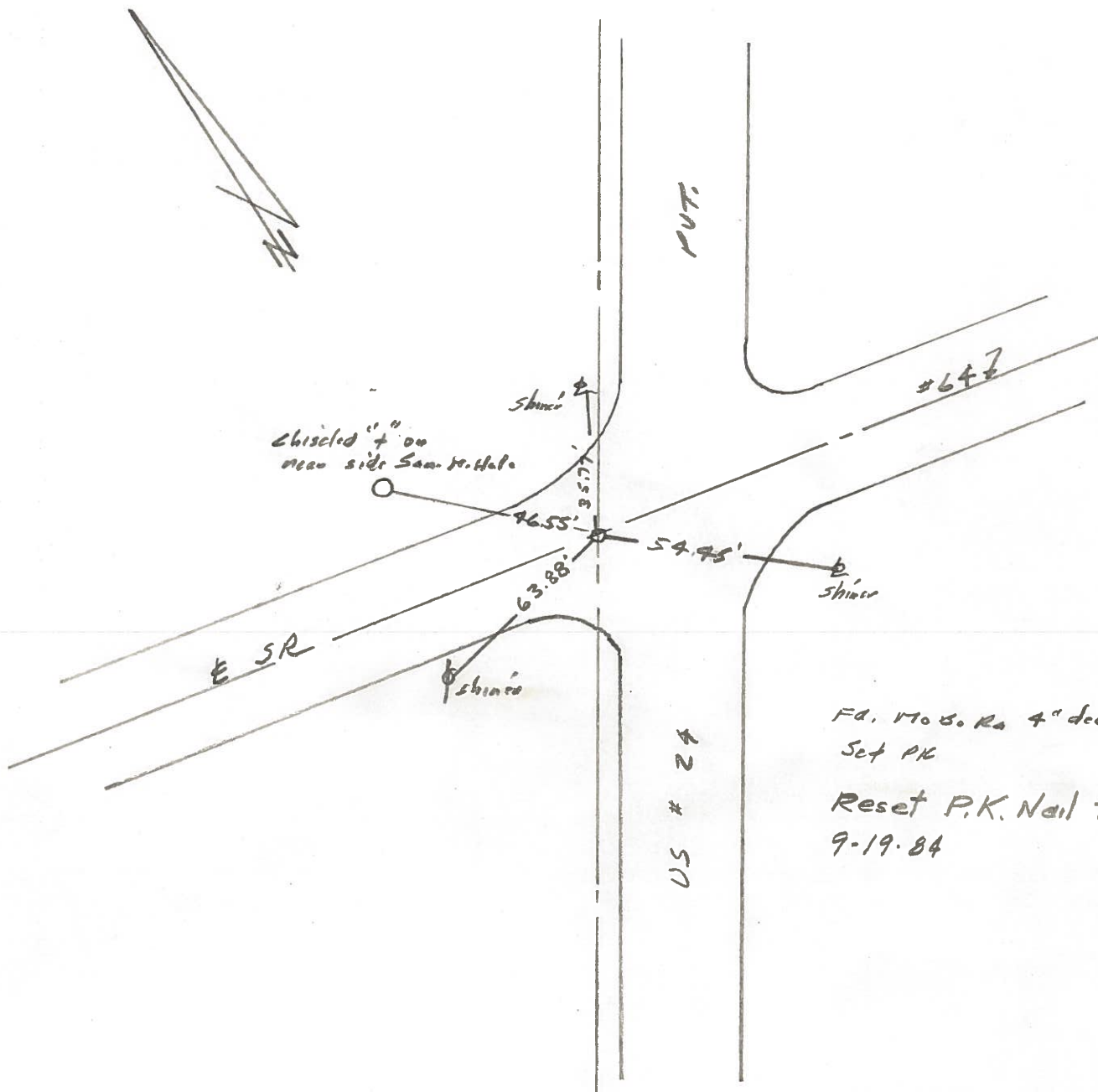
57

R. Michalak

D. Curtis

SLM STA.

REF. NO. 57



PERSONNEL TITLE PERSONNEL TITLE

D. CURTIS

COUNTY LUCAS

DATE JULY 8, 1971

D. STEVENS

S. R. U.S. #24

WEATHER CLOUDY

R. BRANNAN

SEC.

TEMP. 70 ±

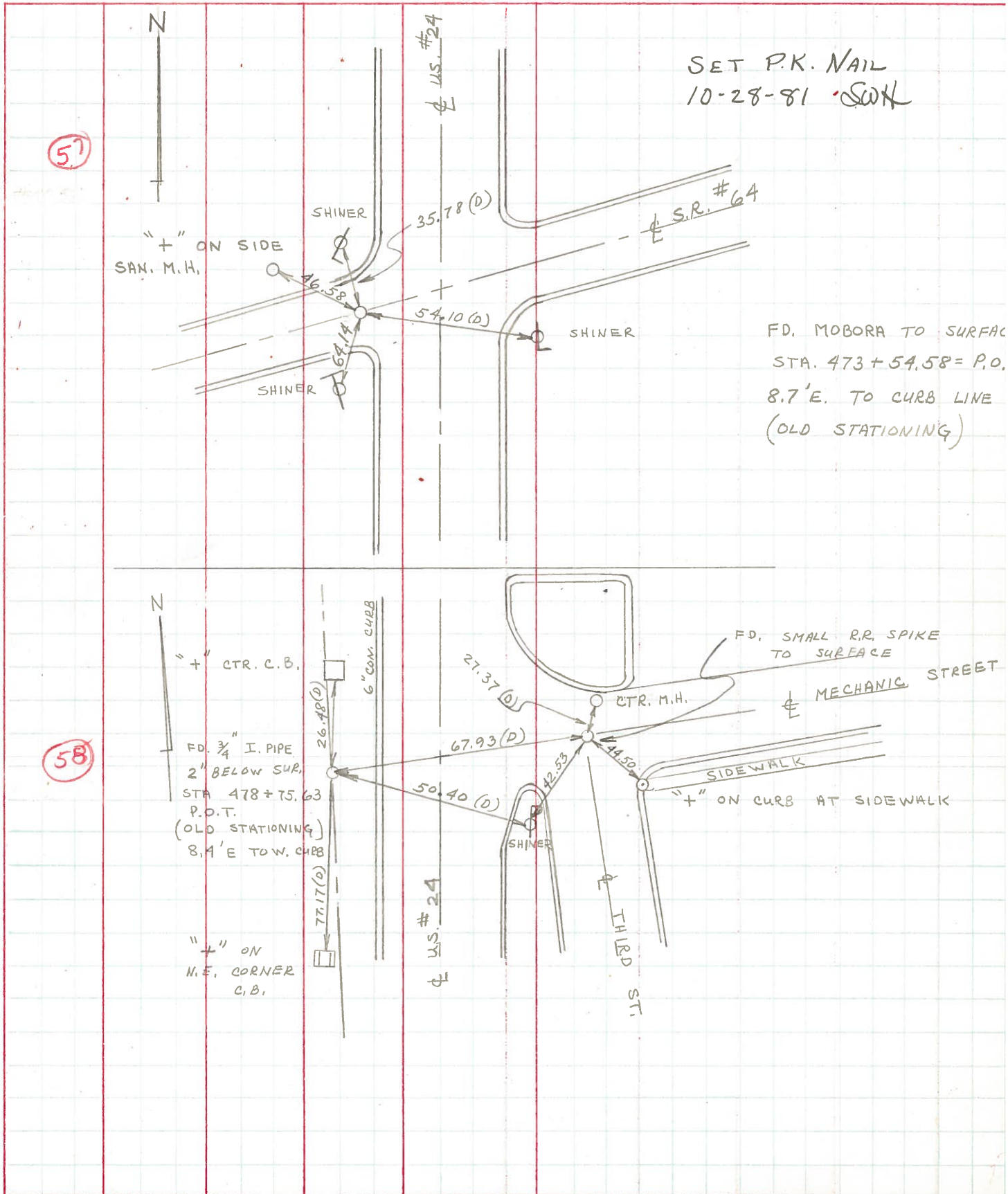
DESCRIPTION REFERENCES TO CONTROL POINTS

LEFT

CENTER LINE

RIGHT

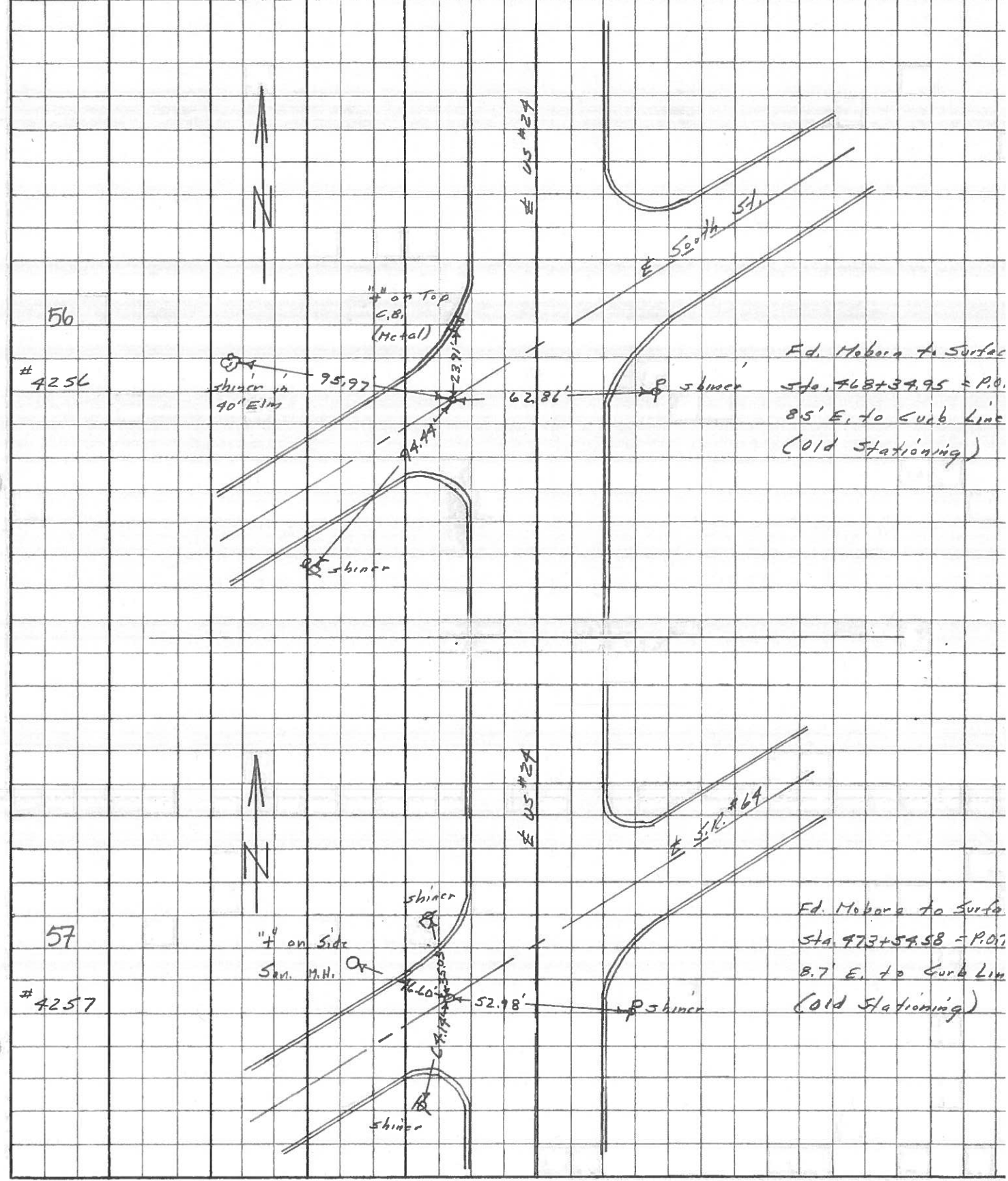
JOB NO.



PERSONNEL	TITLE	PERSONNEL	TITLE	COUNTY	DATE	WEATHER	TEMP.
Stanc	Notes	Teal	Flag	Lucas	31 May 66	Fair	60°
Beck	Flag			S. R. #24			
Michalak	Tape			SEC. Waterville			
Brindley	Tape						

DESCRIPTION: References to Control Points JOB NO. _____

LEFT CENTER LINE RIGHT



PERSONNEL Stone TITLE _____ PERSONNEL Schroder TITLE _____ COUNTY Lucas DATE 9 Feb. 66
Dreno _____ _____ _____ S. R. #27 WEATHER Damp
Beck _____ _____ _____ SEC. _____ TEMP. 44°
Bridley _____ _____ _____ DESCRIPTION Pts. To Control Pts. JOB NO. _____

	LEFT	CENTER LINE	RIGHT
429+62.9 = P.I.		55.21'	E. To Shiner in 28" Locust (P)
54	Ed. 3/4" I.P. at surface	47.91'	S.E. To Shiner in 13" Sycamore (P)
		86.0'	N. To S. Edge Drive to Old Bridge
449+71.15 = P.I.		80.81'	N.E. To "7" on S.W. Cor. C.B. (P)
55	Ed. McBo Ra Mon. 1 1/2" Below Pt. 70' W. of E. Edge Pt.	66.10'	E.N.E. To Con. Mon. (D)
		67.45'	S.E. To Con. Mon. (D)
468+34.95 = P.O.T. (E South St.)		94.44'	W.S.W. To Shiner in P.P. (D)
56	Ed. McBo Ra Mon. at surface	95.77'	N.W. To Shiner in 40" Tree (D)
		62.86'	E.S.E. To Shiner in P.P. (D)
473+34.58 = P.O.T. (E S.R. #24)		35.03'	N. To Shiner in L. Post (D)
57	Ed. McBo Ra Mon. to surface	64.14'	S.W. To Shiner in T.P. (D)
		52.98'	E.S.E. To Shiner in P.P. (D)
478+75.63 = P.O.T. (E Mechanic St.)		26.57'	N. To Chiseled "7" on Ctr. Groove of C.B. (D)
58A	Ed. 3/8" I.P. 2" Below surface 8.4' West of W. Curb	50.39'	S.E. To Shiner in P.P. (D)
		77.10'	S. To Chiseled "7" on N.E. Cor. C.B. (D)
		68.04'	E. To R.R. Spk. & Third St. (D)
58B	Int. Mechanic St. & Third St. Ed. R.R. Spk. to surface	68.04'	W. To 3/4" I.P. & Mechanic & S.R. #24 (D)
		26.51'	N.N.E. To Near Edge M.H. Rim (D)
		44.47'	S.E. To "7" on Con. Curb @ Walk (D)
		42.57'	S.W. To Shiner in P.P. (D)

PERSONNEL TITLE PERSONNEL TITLE

COUNTY Lucas

DATE 3-13-53

S. R. #24

WEATHER

SEC B & Waterville

TEMP.

DESCRIPTION Wit. Ties on in Lucas Co. BK. #186 Pg. 55

JOB NO.

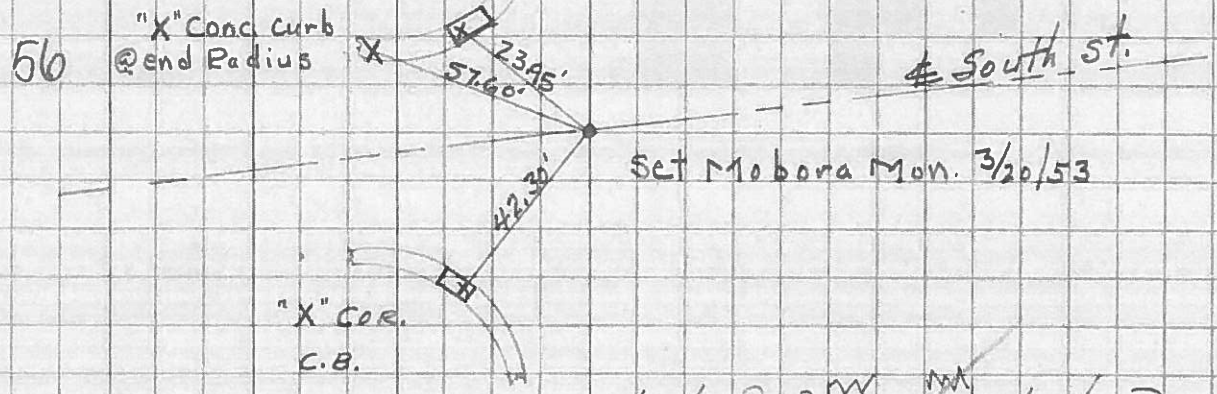
LEFT

CENTER LINE

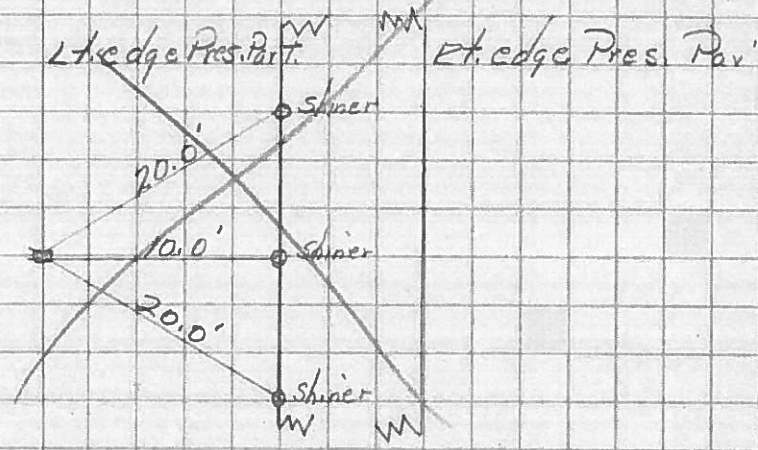
RIGHT

Sta 468+34.95 P.O.T.
South St. Waterville
S.H. 697
F.d.o.K.

94.44 - W.S.W A.P.
95.97 - N.W. 40" true (South)
62.86 - E.S.E. A.P.



No
Sta. 463+
Locust # S.H. 697
Waterville



Sta 473+54.58 P.O.T.
Canal Blvd. #
Farnsworth Rd. S.R.#64
(Brass Mon)

o Ref.

57