

O.D.O.T. DISTRICT 2 SURVEY OFFICE

PERSONNEL

REFERENCE NO. 58A58B SHEET 66 OF 68

NOTES Huss

H.C. VAN DUSEN

DATE 6-10-97

ROUTE U.S. 24

R.C. MOSEY

WEATHER SUNNY

COUNTY LUCAS

TEMP. +70° F

TOWNSHIP WATERVILLE

SECTION _____

T 6 NR 10 E

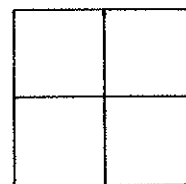
TYPE MONUMENT 3" IRON PIPE PK NAIL

ON SURFACE - BELOW YES

LEFT- & PAV'T. - RIGHT _____

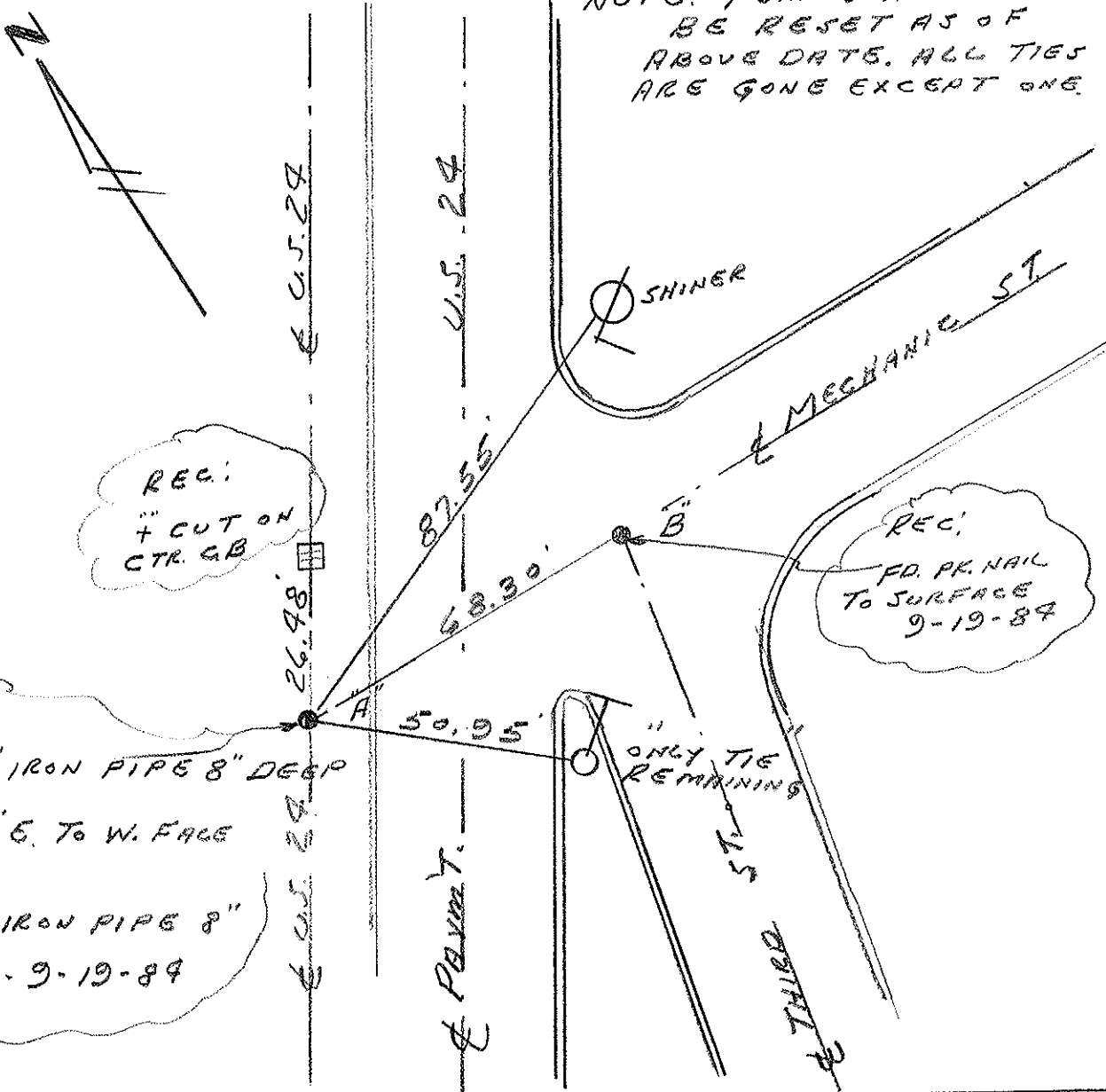
TO _____ EDGE PAVEMENT

S.L.M. 579+18



NOTE: POINTS HAVE TO BE RESET AS OF ABOVE DATE. ALL TIES ARE GONE EXCEPT ONE.

NOTE: See Plans For Re-built Intersection
Luc 24 1077.991



REC:
3/4\"/>

REC:
FD. PK. NAIL
TO SURFACE
9-19-84

REC:
FD. 3/4\"/>

Q.D.O.T. DISTRICT 2 SURVEY OFFICE

SHEET 7 OF 7

County Lucas S.R. US #24

Date 27 June 84

Township Waterville

Weather Cloudy

Section _____

Temp. 70°

T N, R E

Personnel I. Stone

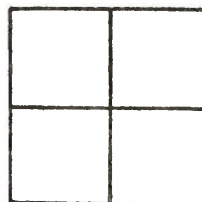
58A

P. Neuse

58B

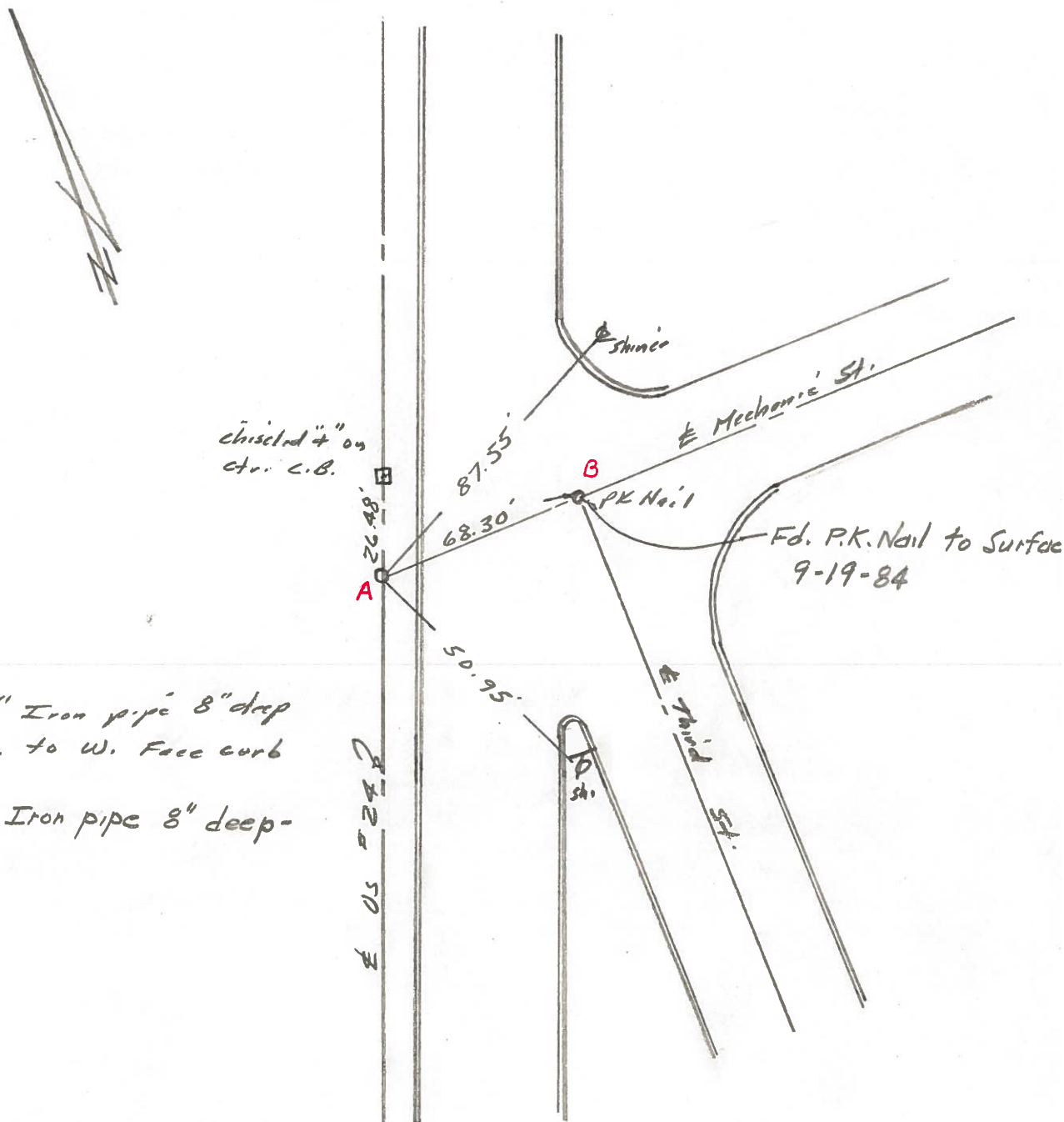
R. Michelak

J. Curdis



SLM Sta. 579+18

REF. No. 58



Fd. 3/4" Iron pipe 8" deep
8.65' E. to W. Face curb

Fd. 3/4" Iron pipe 8" deep -
9-19-84

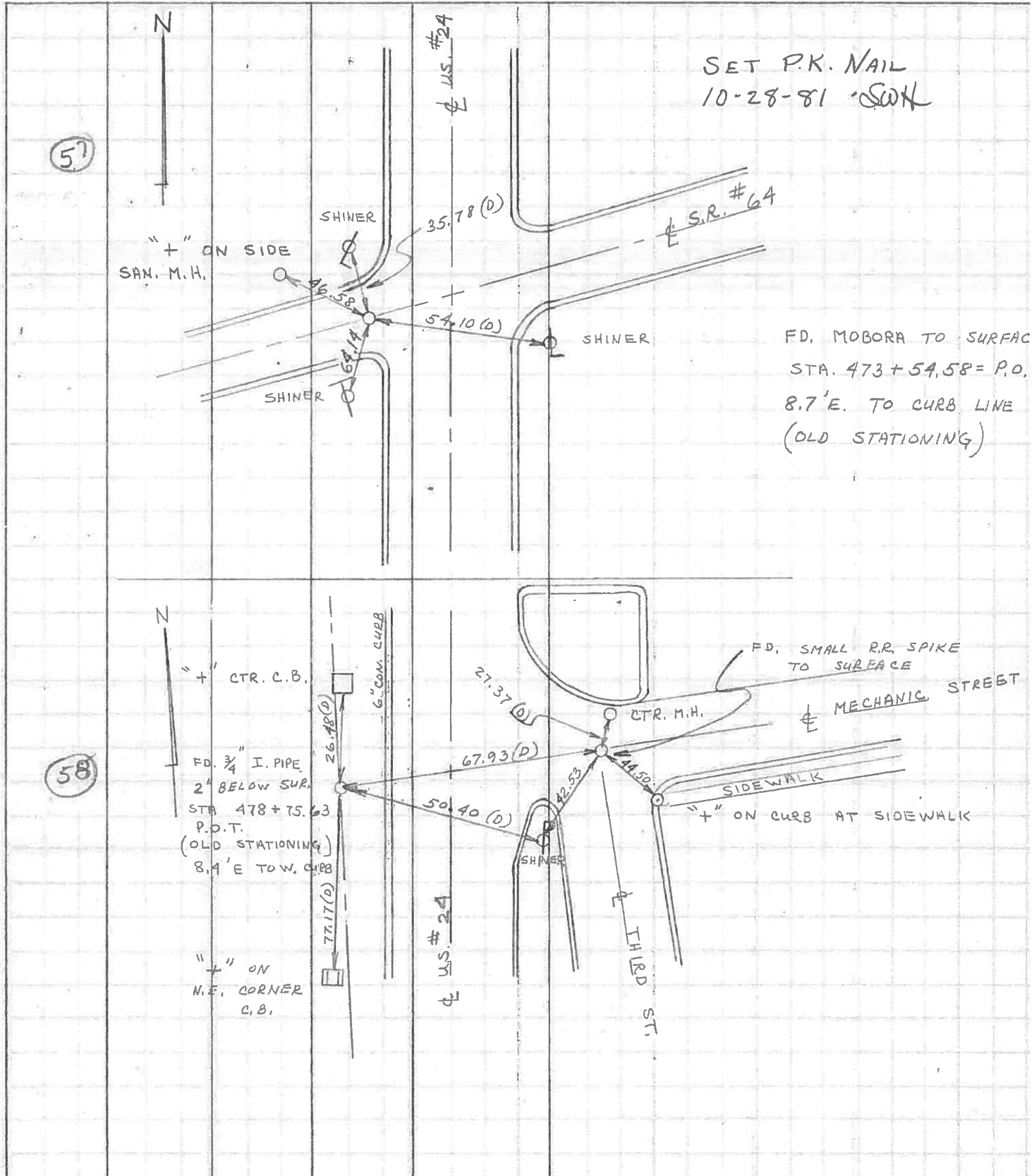
PERSONNEL	TITLE	PERSONNEL	TITLE
D. CURTIS			
D. STEVENS			
R. BRANNAN			

COUNTY LUCAS DATE JULY 8, 1971

S. R. U.S. #24 WEATHER CLOUDY

SEC. _____ TEMP. 70±

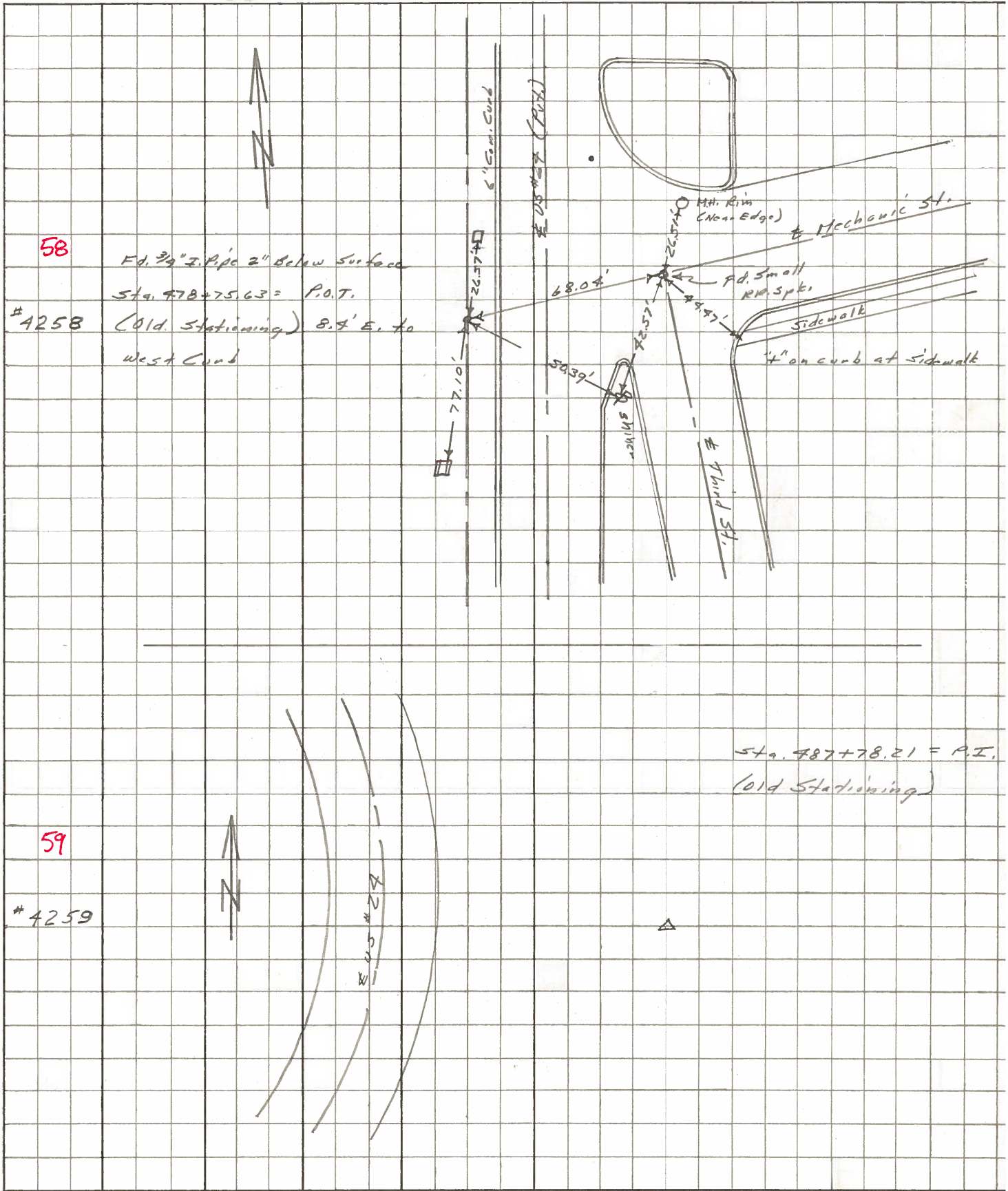
DESCRIPTION _____ REFERENCES TO CONTROL POINTS _____ JOB NO. _____
 LEFT CENTER LINE RIGHT



PERSONNEL	TITLE	PERSONNEL	TITLE
Stone	Notes		
Beck	Flag		
Michalak	Tape		
Schroder	Tape		

COUNTY Lucas DATE June 68
 S. R. # 24 WEATHER Fair
 SEC. Watceville TEMP.

DESCRIPTION References to Control Points LEFT CENTER LINE RIGHT JOB NO.



PERSONNEL TITLE PERSONNEL TITLE COUNTY Lucas DATE 9 Feb. 66
 Stone Schroder
 Drano S. R. #24 WEATHER Damp
 Beck SEC. TEMP. 77°
 Brindley
 DESCRIPTION Pts. To Control Pts. JOB NO.

	LEFT	CENTER LINE	RIGHT
429+62.9 = P.I.		55.21'	E. To Shiner in 28" Locust (P)
54	Ed. 3/4" I.P. at surface	77.91'	S.E. To Shiner in 13" Sycamore (P)
		86.0'	N. To S. Edge Drive to Old Bridge
449+71.15 = P.I.		80.81'	N.E. To "4" in S.W. Cor. C.B. (P)
55	Ed. Ho. Bo. Ra. Mon. 1 1/2" Below Pot. 70' W. of E. Edge Pot.	66.10'	E.N.E. To Cen. Mon. (D)
		67.45'	S.E. To Cen. Mon. (D)
468+3495 = P.O.T. (E South St.)		99.44'	W.S.W. To Shiner in P.P. (D)
56	Ed. Ho. Bo. Ra. Mon. at surface	95.77'	N.W. To Shiner in 40" Tree (D)
		62.86'	E.S.E. To Shiner in P.P. (D)
473+3458 = P.O.T. (E S.R. #24)		35.03'	N. To Shiner in L. Post (D)
57	Ed. Ho. Bo. Ra. Mon. to surface	64.14'	S.W. To Shiner in T.P. (D)
		52.98'	E.S.E. To Shiner in P.P. (D)
478+75.63 = P.O.T. (E Mechanic St.)		26.57'	N. To Chiseled "4" on Ctr. Groove of C.B. (D)
58A	Ed. 3/4" I.P. 2" Below surface 8.4' West of W. Curb	50.39'	S.E. To Shiner in P.P. (D)
		77.10'	S. To Chiseled "4" on N.E. Cor. C.B. (D)
		68.04'	E. To R.R. Spk. & Third St. (D)
58B	Int. Mechanic St. & Third St. Ed. R.R. Spk. to surface	68.04'	W. To 3/4" I.P. & Mechanic & S.R. #24 (D)
		26.51'	N.N.E. To Near Edge M.H. Rim (D)
		44.47'	S.E. To "4" on Cen. Curb @ W. Lk (D)
		42.57'	S.W. To Shiner in P.P. (D)

PERSONNEL TITLE PERSONNEL TITLE

COUNTY Lucas DATE 3-16-53

S. R. #24 WEATHER

SEC. B & Waterville TEMP.

DESCRIPTION LEFT CENTER LINE RIGHT JOB NO.

Sta. 478+75.63 Page 56 Field Bk 18a
Mechanic of
S.H. 697 Waterville

58

Iron Pipe
3/16/53

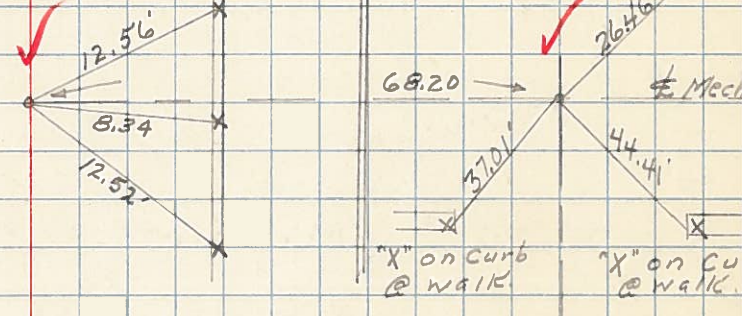
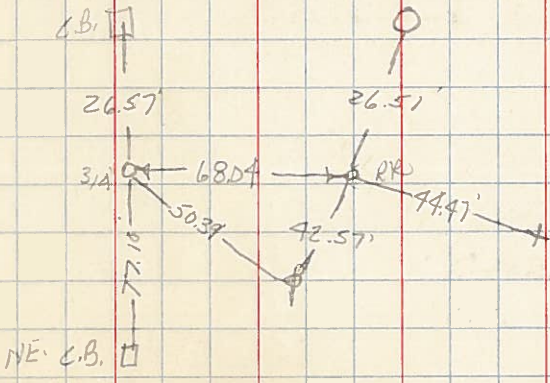
Survey
Cana/
Blvd.

Lt.
Conc. Curb

Cana/
Blvd.

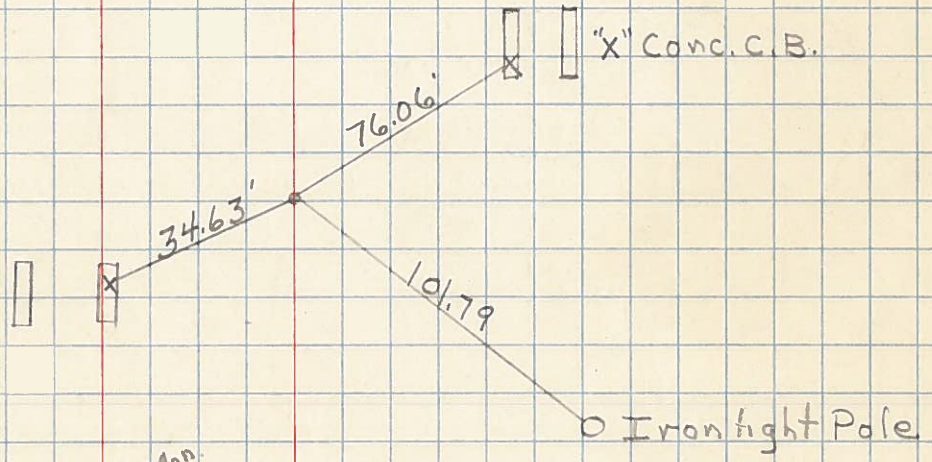
Rt.
Conc. Curb

Near edge
M.H. Rim



Sta. 481+10.65 P.C.

No



Sta. 487+78.72 P.I.

$\Delta = 29^{\circ}-24'$ Lt.
 $D = 2^{\circ}-15'$
 $T = 668.07$
 $L = 1306.6$

59

