

# O.D.O.T. DISTRICT 2 SURVEY OFFICE

PERSONNEL \_\_\_\_\_

REFERENCE NO. 58A58B SHEET 66 OF 68

NOTES Huss

H.C. VAN DUSEN

DATE 6-10-97

ROUTE U.S. 24

R.C. MOSEY

WEATHER SUNNY

COUNTY LUCAS

TEMP. +70° F

TOWNSHIP WATERVILLE

SECTION \_\_\_\_\_

T 6 NR 10 E

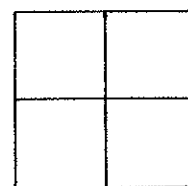
TYPE MONUMENT 3" IRON PIPE PK NAIL

ON SURFACE - BELOW YES

LEFT- & PAV'T. - RIGHT \_\_\_\_\_

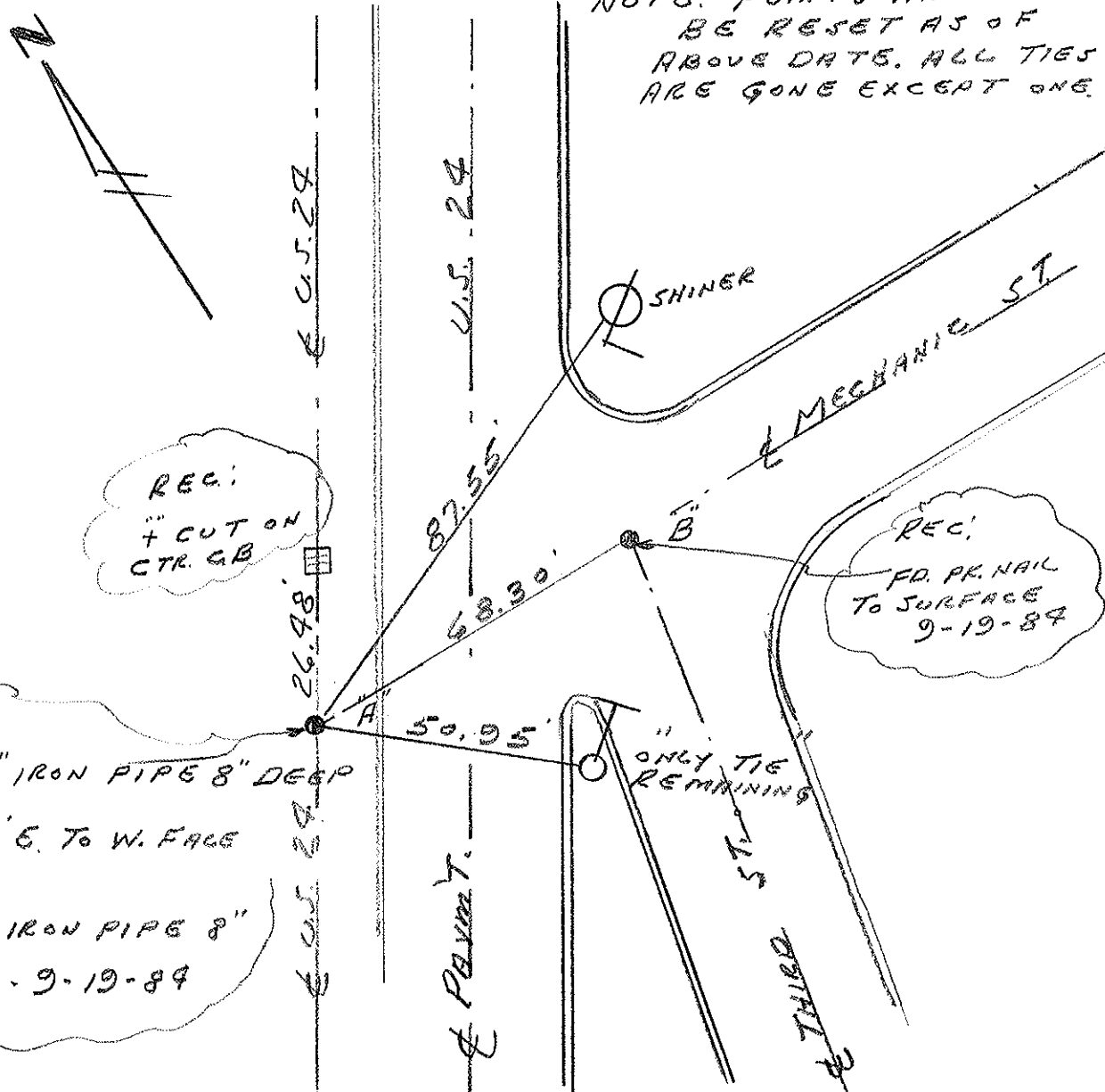
TO \_\_\_\_\_ EDGE PAVEMENT

S.L.M. 579+18



NOTE: POINTS HAVE TO BE RESET AS OF ABOVE DATE. ALL TIES ARE GONE EXCEPT ONE.

NOTE: See Plans For Re-built Intersection  
Luc 24 1077.991



REC:  
+ CUT ON  
CTR. CB

REC:  
FD. PK. NAIL  
TO SURFACE  
9-19-84

REC:  
FD. 3" IRON PIPE 8" DEEP  
4'  
8.65' E. TO W. FACE  
CURB.  
FD. 3" IRON PIPE 8"  
4'  
DEEP - 9-19-84

ONLY TIE  
REMAINING

Q.D.O.T. DISTRICT 2 SURVEY OFFICE

SHEET 7 OF 7

County Lucas S.R. US #24

Date 27 June 84

Township Waterville

Weather Cloudy

Section \_\_\_\_\_

Temp. 70°

T\_N, R\_E

Personnel I. Stone

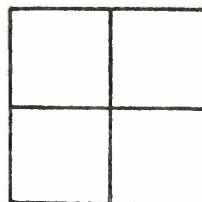
58A

P. Neuse

58B

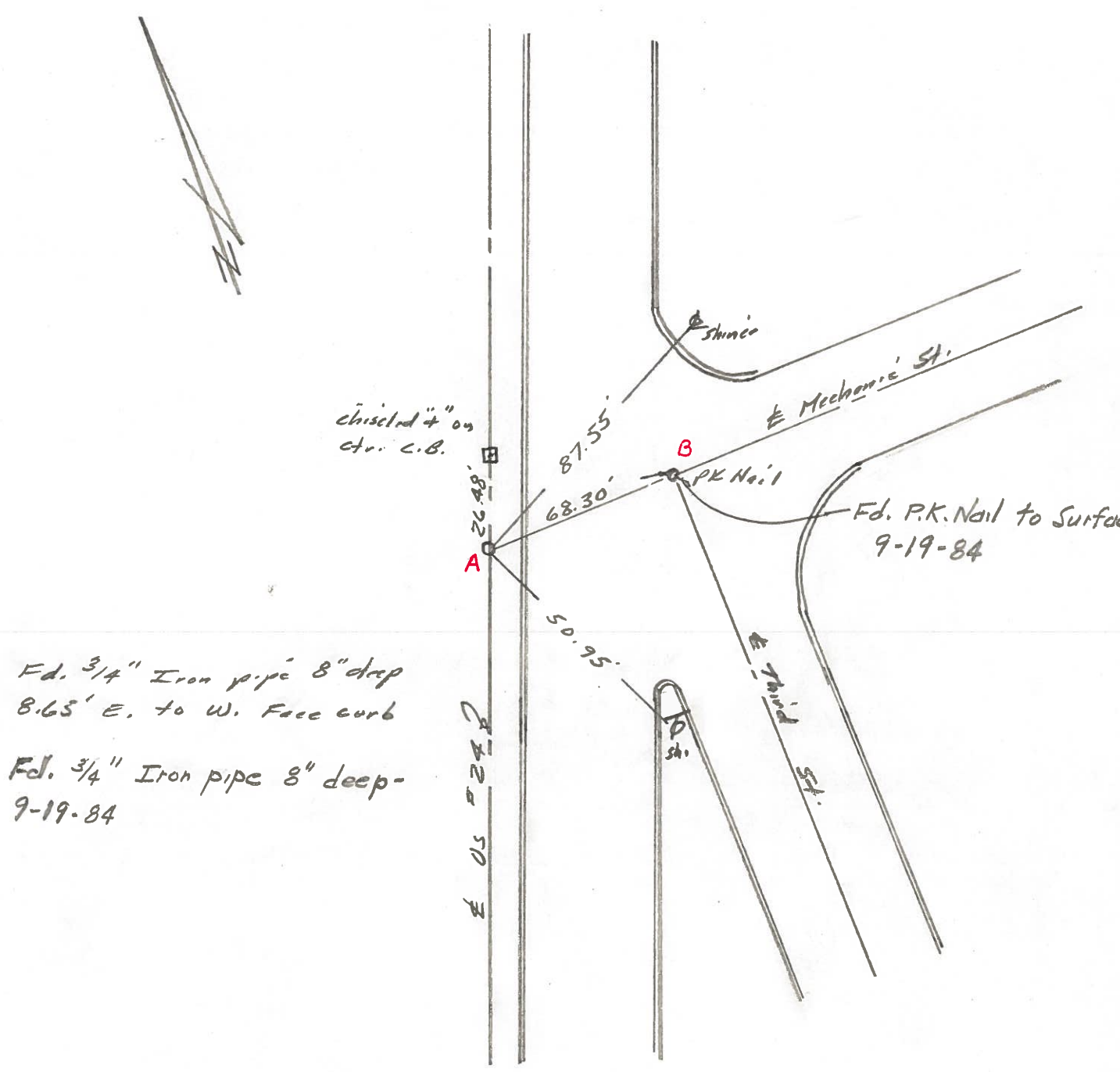
R. Michelak

J. Curdis



SLM Sta. 579+18

REF. No. 58



Fd. 3/4" Iron pipe 8" deep  
8.65' E. to W. Face curb

Fd. 3/4" Iron pipe 8" deep  
9-19-84

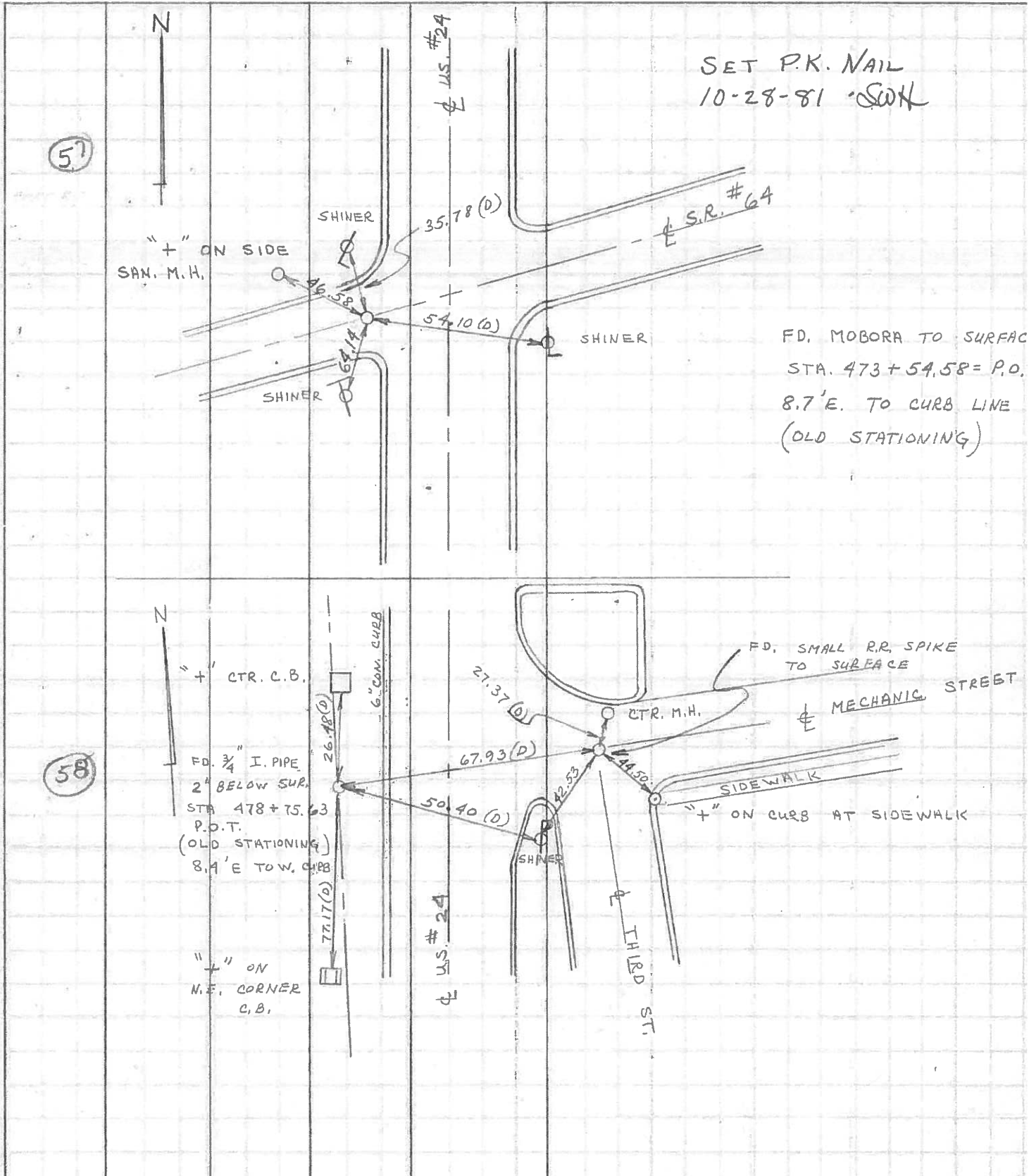
PERSONNEL	TITLE	PERSONNEL	TITLE
D. CURTIS			
D. STEVENS			
R. BRANNAN			

COUNTY LUCAS DATE JULY 8, 1971

S. R. U.S. #24 WEATHER CLOUDY

SEC. \_\_\_\_\_ TEMP. 70±

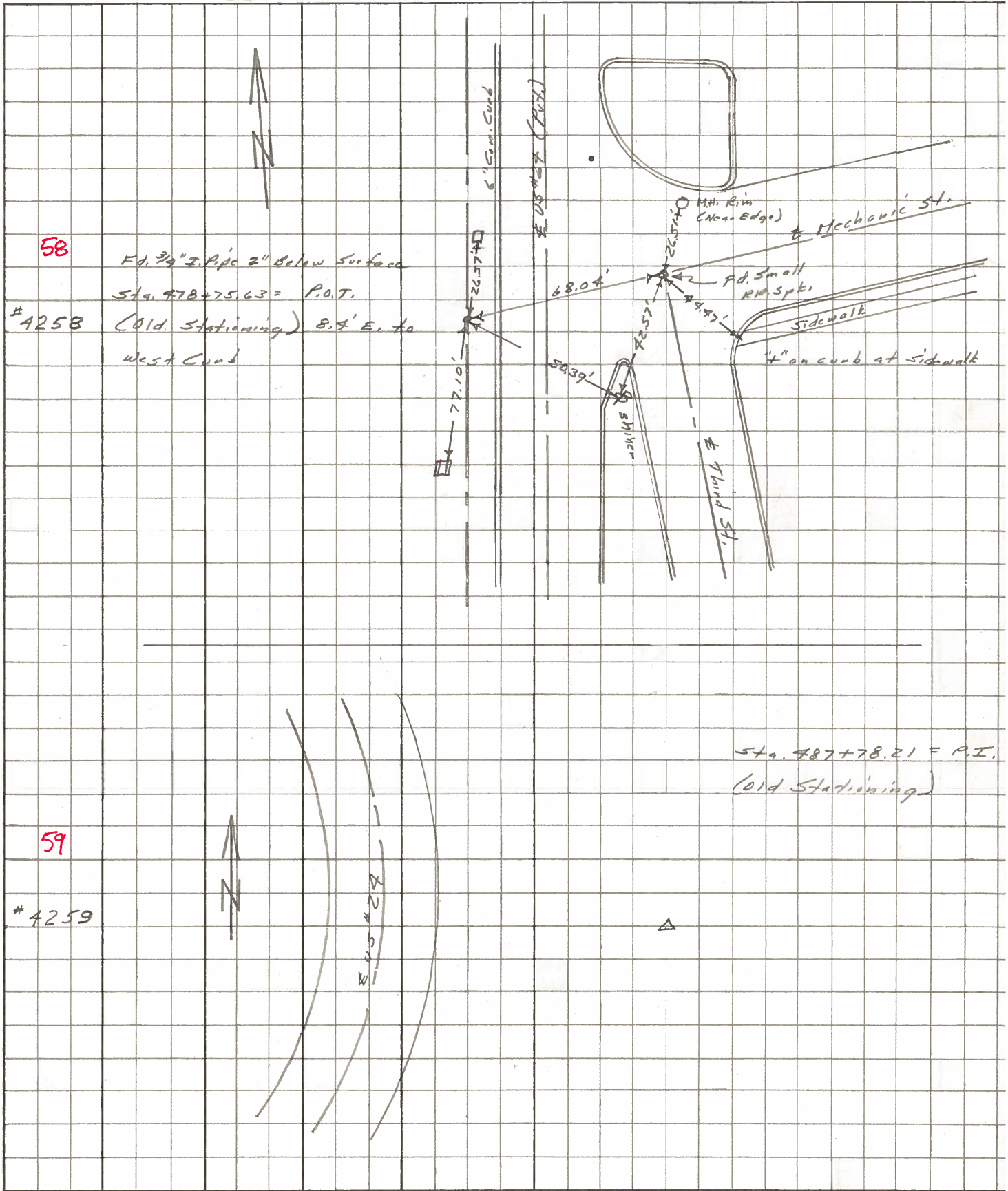
DESCRIPTION \_\_\_\_\_ REFERENCES TO CONTROL POINTS \_\_\_\_\_ JOB NO. \_\_\_\_\_



PERSONNEL	TITLE	PERSONNEL	TITLE
Stone	Notes		
Beck	Flag		
Michalak	Tape		
Schroder	Tape		

COUNTY Lucas DATE June 68  
 S. R. # 24 WEATHER Fair  
 SEC. Wadswille TEMP. \_\_\_\_\_

DESCRIPTION References to Control Points JOB NO. \_\_\_\_\_  
 LEFT CENTER LINE RIGHT



PERSONNEL TITLE PERSONNEL TITLE COUNTY Lucas DATE 9 Feb. 66  
 Stone Schroder  
 Drano S. R. #24 WEATHER Damp  
 Beck SEC. TEMP. 77°  
 Brindley  
 DESCRIPTION Pts. To Control Pts. JOB NO.

	LEFT	CENTER LINE	RIGHT
429+62.9 = P.I.		55.21'	E. To Shiner in 28" Locust (P)
54	Ed. 3/4" I.P. at surface	77.91' 86.0'	S.E. To Shiner in 13" Sycamore (P) N. To S. Edge Drive to Old Bridge
449+71.15 = P.I.		80.81'	N.E. To "4" in S.W. Cor. C.B. (P)
55	Ed. Ho. Bo. Ra. Mon. 1 1/2" Below Pot. 70' W. of E. Edge Pot.	66.10' 67.45'	E.N.E. To Cen. Mon. (D) S.E. To Cen. Mon. (D)
468+3495 = P.O.T. (E South St.)		99.44'	W.S.W. To Shiner in P.P. (D)
56	Ed. Ho. Bo. Ra. Mon. at surface	95.77' 62.86'	N.W. To Shiner in 40" Tree (D) E.S.E. To Shiner in P.P. (D)
473+3458 = P.O.T. (E S.R. #64)		35.03'	N. To Shiner in L. Post (D)
57	Ed. Ho. Bo. Ra. Mon. to surface	64.14' 52.98'	S.W. To Shiner in T.P. (D) E.S.E. To Shiner in P.P. (D)
478+75.63 = P.O.T. (E Mechanic St.)		26.57'	N. To Chiseled "4" on Ctr. Groove of C.B. (D)
58A	Ed. 3/4" I.P. 2" Below surface 8.4' West of W. Curb	50.39' 77.10' 68.04'	S.E. To Shiner in P.P. (D) S. To Chiseled "4" on N.E. Cor. C.B. (D) E. To R.R. Spk. & Third St. (D)
58B	Int. Mechanic St. & Third St. Ed. R.R. Spk. to surface	68.04' 26.51' 44.47' 42.57'	W. To 3/4" I.P. & Mechanic & S.R. #24 (D) N.N.E. To Near Edge M.H. Rim (D) S.E. To "4" on Cen. Curb @ Walk (D) S.W. To Shiner in P.P. (D)

PERSONNEL TITLE PERSONNEL TITLE

COUNTY Lucas DATE 3-16-53

S. R. #24 WEATHER

SEC. B & Waterville TEMP.

DESCRIPTION LEFT CENTER LINE RIGHT JOB NO.

Sta. 478+75.63 Page 56 Field Bk 18a  
Mechanic of  
S.H. 697 Waterville

58

Iron Pipe  
3/16/53

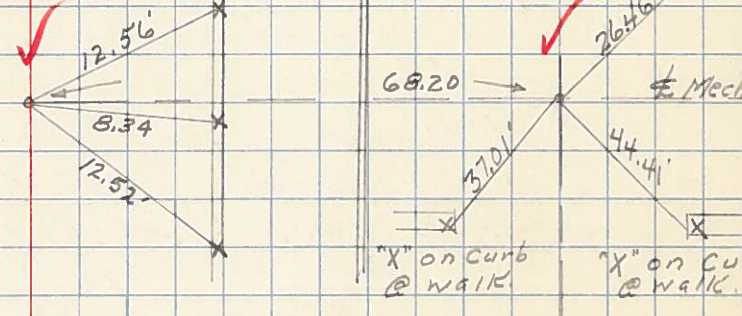
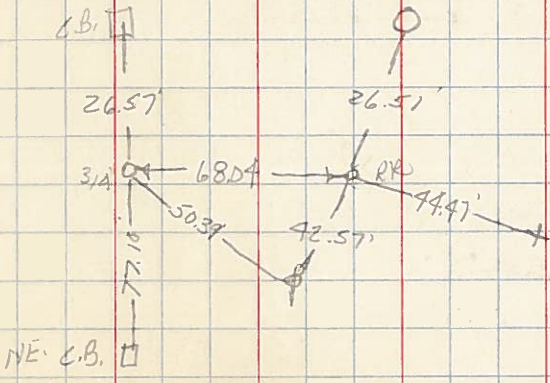
Survey  
Cana/  
Blvd.

Lt.  
Conc. Curb

Cana/  
Blvd.

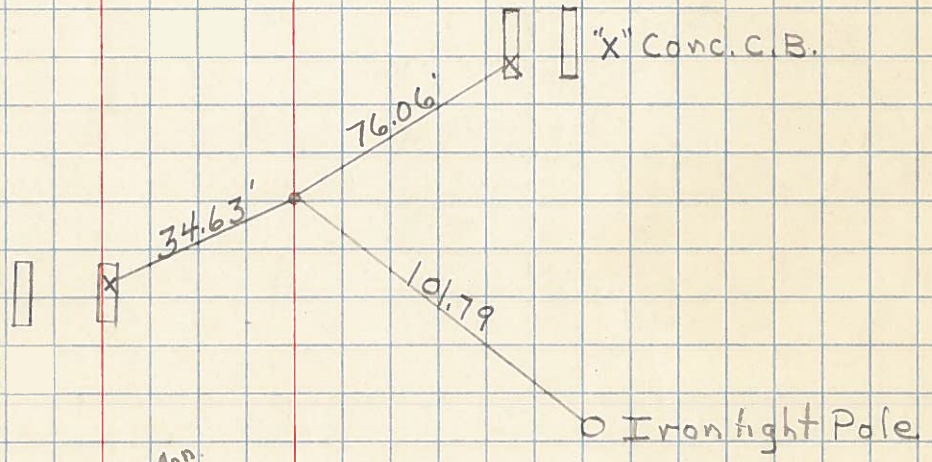
Rt.  
Conc. Curb

Near edge  
M.H. Rim



Sta. 481+10.65 P.C.

No



Sta. 487+78.72 P.I.

$\Delta = 29^{\circ}-24'$  Lt.  
 $D = 2^{\circ}-15'$   
 $T = 668.07$   
 $L = 1306.6$

59

