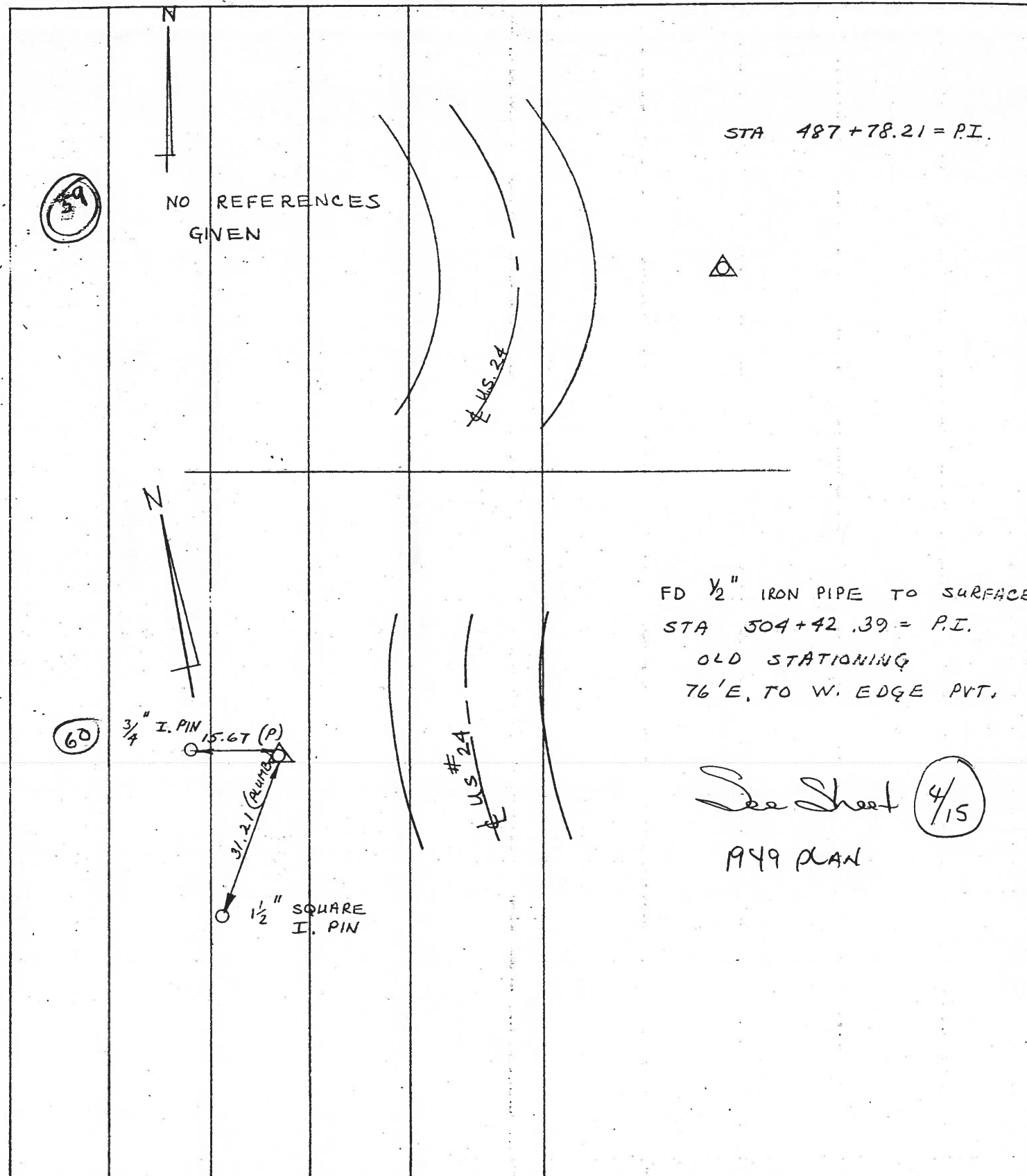


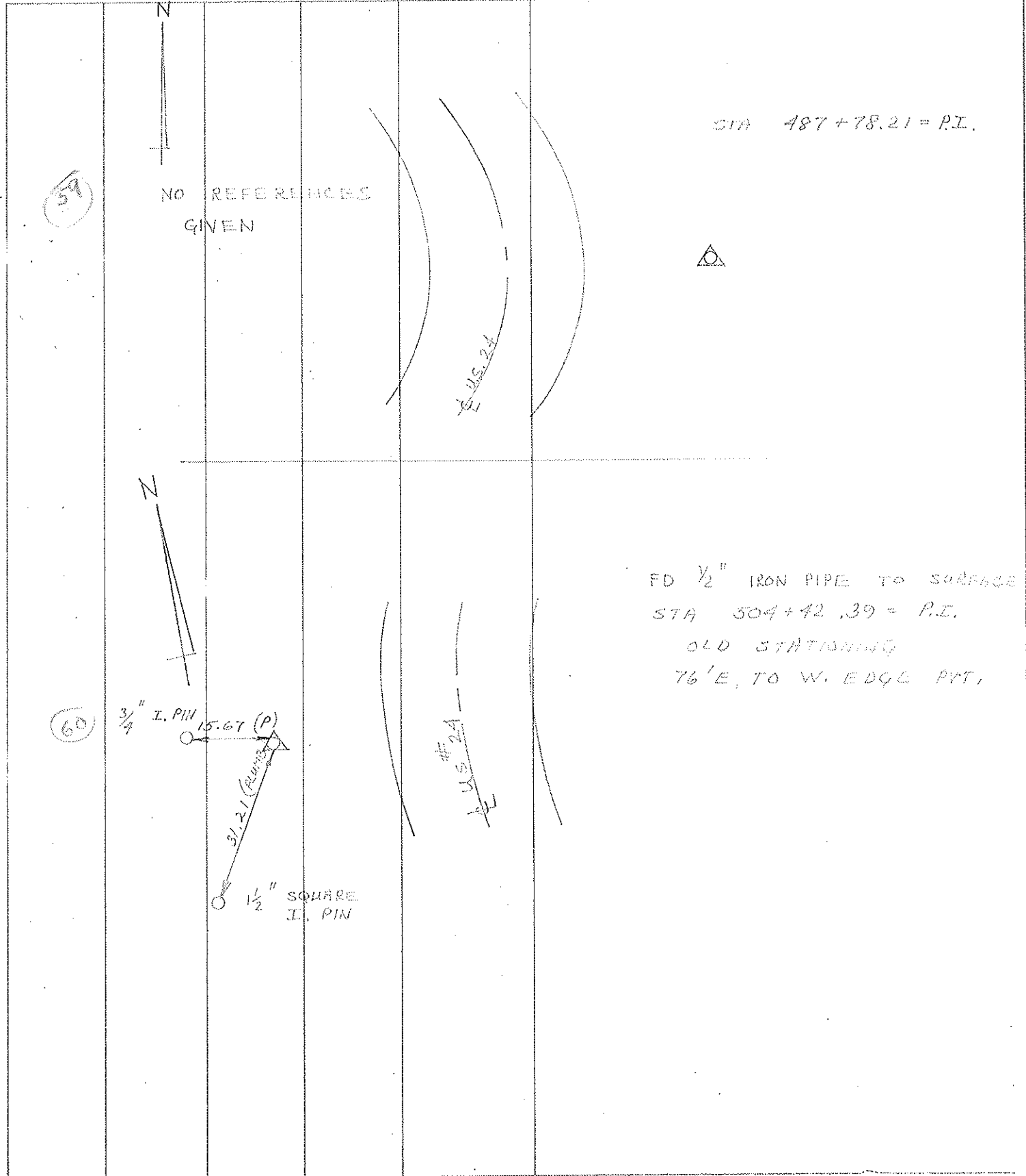
PERSONNEL	TITLE	PERSONNEL	TITLE	COUNTY	DATE
D. CURTIS				LUCAS	JULY 8, 1971
D. STEVENS				S. R. U.S. # 24	WEATHER CLOUDY
R. BRANNAN					TEMP 70±

DESCRIPTION	REFERENCES TO CONTROL POINTS			JOB NO.
	LEFT	CENTER LINE	RIGHT	



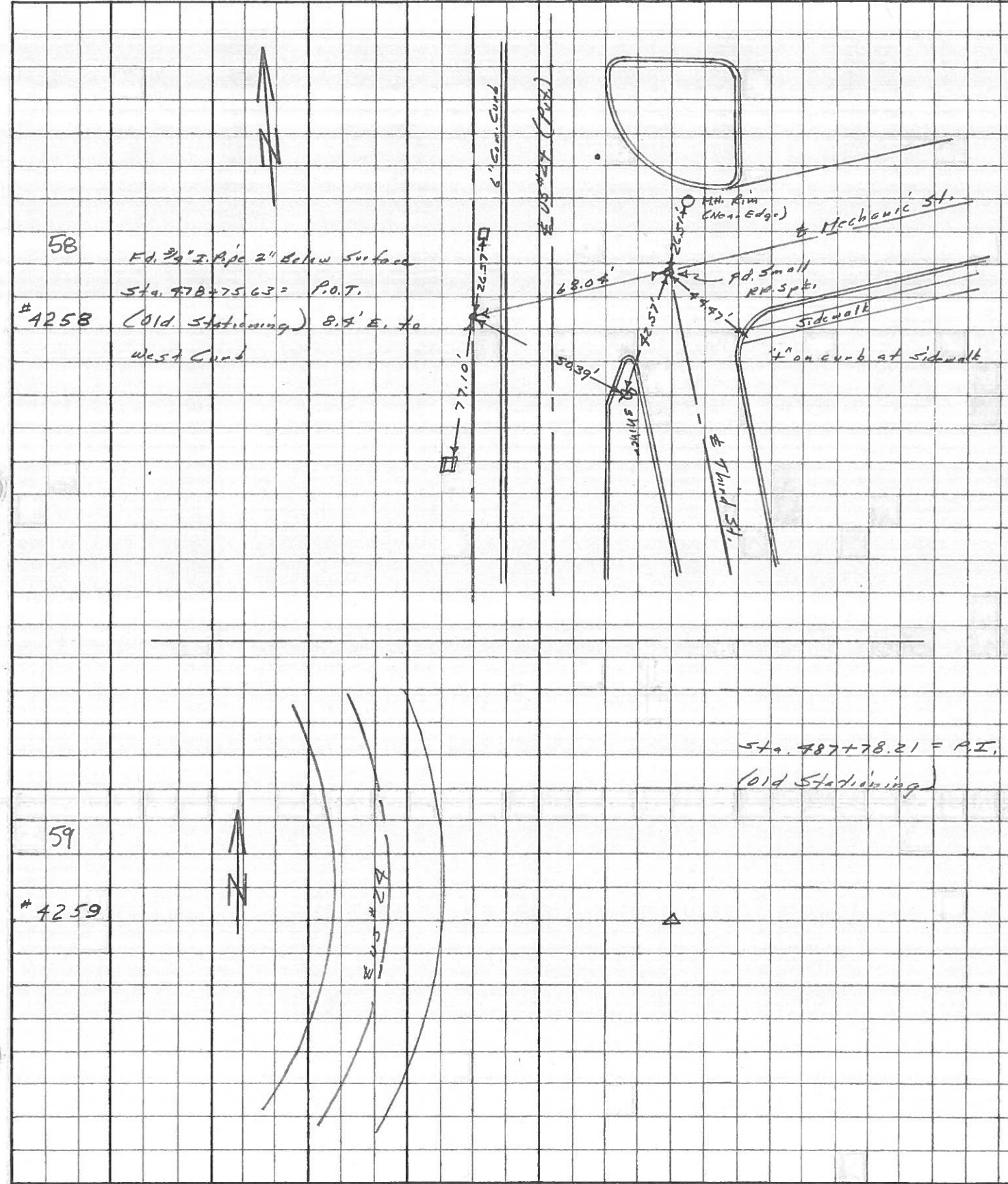
PERSONNEL	TITLE	PERSONNEL	TITLE	COUNTY	DATE
D. CURTIS				LUCAS	JULY 8, 1971
D. STEVENS				U.S. # 24	WEATHER CLOUDY
R. BRANNAN					TEMP. 70 <sup>+</sup>

DESCRIPTION	REFERENCES TO CONTROL POINTS	JOB NO.
	LEFT CENTER LINE RIGHT	



PERSONNEL	TITLE	PERSONNEL	TITLE	COUNTY	DATE
Stone	Notes			Lucas	June 68
Beck	Flag			S. R. # 24	WEATHER Rain
Michalak	Tape			SEC. Waterville	TEMP.
Schroeder	Tape				

DESCRIPTION References to Control Points JOB NO. \_\_\_\_\_



PERSONNEL Stone TITLE \_\_\_\_\_ PERSONNEL Schroder TITLE \_\_\_\_\_ COUNTY Lucas DATE 7 Feb. 66

Donno \_\_\_\_\_ S. R. #24 WEATHER H. 1d

Beck \_\_\_\_\_ SEC. \_\_\_\_\_ TEMP. 50°

Brindley \_\_\_\_\_ DESCRIPTION Refs. To Control Pts. JOB NO. \_\_\_\_\_

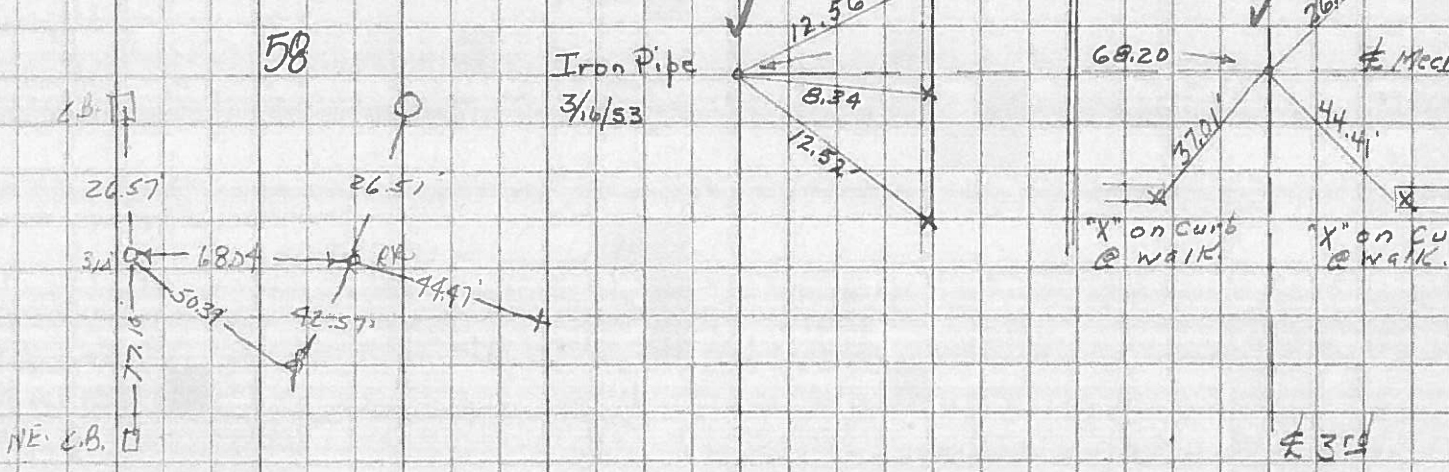
	LEFT	CENTER LINE	RIGHT
✓	487+78.72 = P.I. <b>59</b>		SEARCHED FOR - COULD NOT FIND
✓	504+42.39 = P.I. <b>60</b>		SEARCHED FOR - COULD NOT FIND
✓	521+58.94 = P.I. <b>61</b> F.d. 1" Axle at Surface	115.27' 63.64' 35.50' 35.6'	E. To Shiner in P.P. (P) S.E. To Shiner in 17" Elm (D) S.W. To "4" on C.B. (P) Rt. Angles to Ex. SR#24
✓	558+61.70 = P.I. <b>63</b> F.d. 3/4" I. Pin at Surface	87.25' 86.15' <del>86.85'</del> 70.40	N.W. To Shiner in P.P. (D) W. To Shiner in R.R. Tie (D) S.W. To Shiner in P.P. (D)
✓	557+72.88 = <del>±</del> DUTCH RD. (SEE BELOW) <b>62</b>		SEARCHED FOR - COULD NOT FIND
	593+69.45 = P.I.		SEARCHED FOR - COULD NOT FIND
✓	616+75.45 = P.I. ( <del>±</del> Black Rd.) <b>65</b> F.d. M.B. RA Mon. To Surface 8882	97.65' 33.73' 82.29' 53.51'	S.W. To Shiner in P.P. ( ) N.W. To "4" on Carr. Curb ( ) S.E. To Shiner in T.R. ( ) N.E. to Shiner in L.P. (D)
✓	<del>±</del> Dutch Rd. F.d. R.R. Spk. To Surface (Looks To Be ON Back Tang.)	28.02' 86.06' 79.40' 59.60	S.W. To Shiner in T.P. (D) N. To 3/4" I.P. (P.I. 558+61.70) W.S.W. To Shiner in P.P. (D) N.W.  283

PERSONNEL	TITLE	PERSONNEL	TITLE	COUNTY	DATE
				Lucas	3-16-53
				S. R. #24	WEATHER
				SEC. B & Waterville	TEMP.

DESCRIPTION LEFT CENTER LINE RIGHT JOB NO.

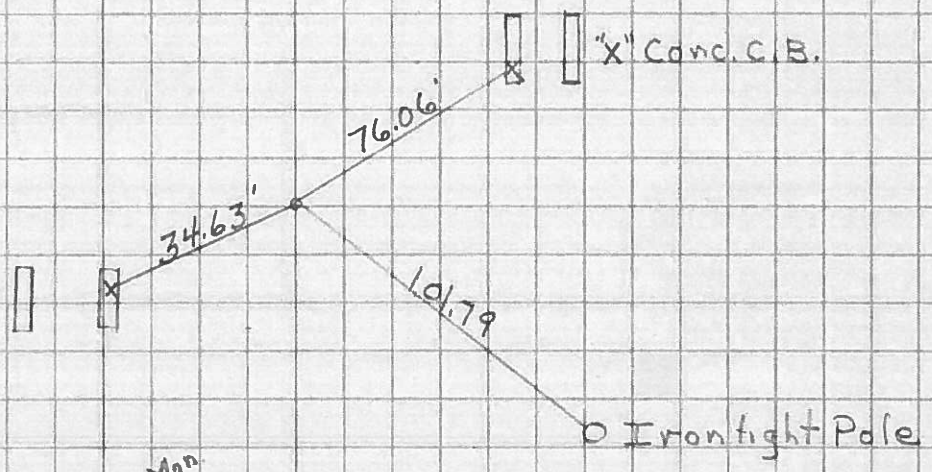
Sta. 478+75.63 *Page 56 Field Bk 186*  
 Mechanic of  
 S.H. 697 Waterville

58



Sta. 481+10.65 P.C.

N.D.



Sta. 487+78.72 P.I.

$\Delta = 29^\circ - 24' \text{ Lt.}$   
 $D = 2^\circ - 15'$   
 $T = 668.07$   
 $L = 1306.6$

59

