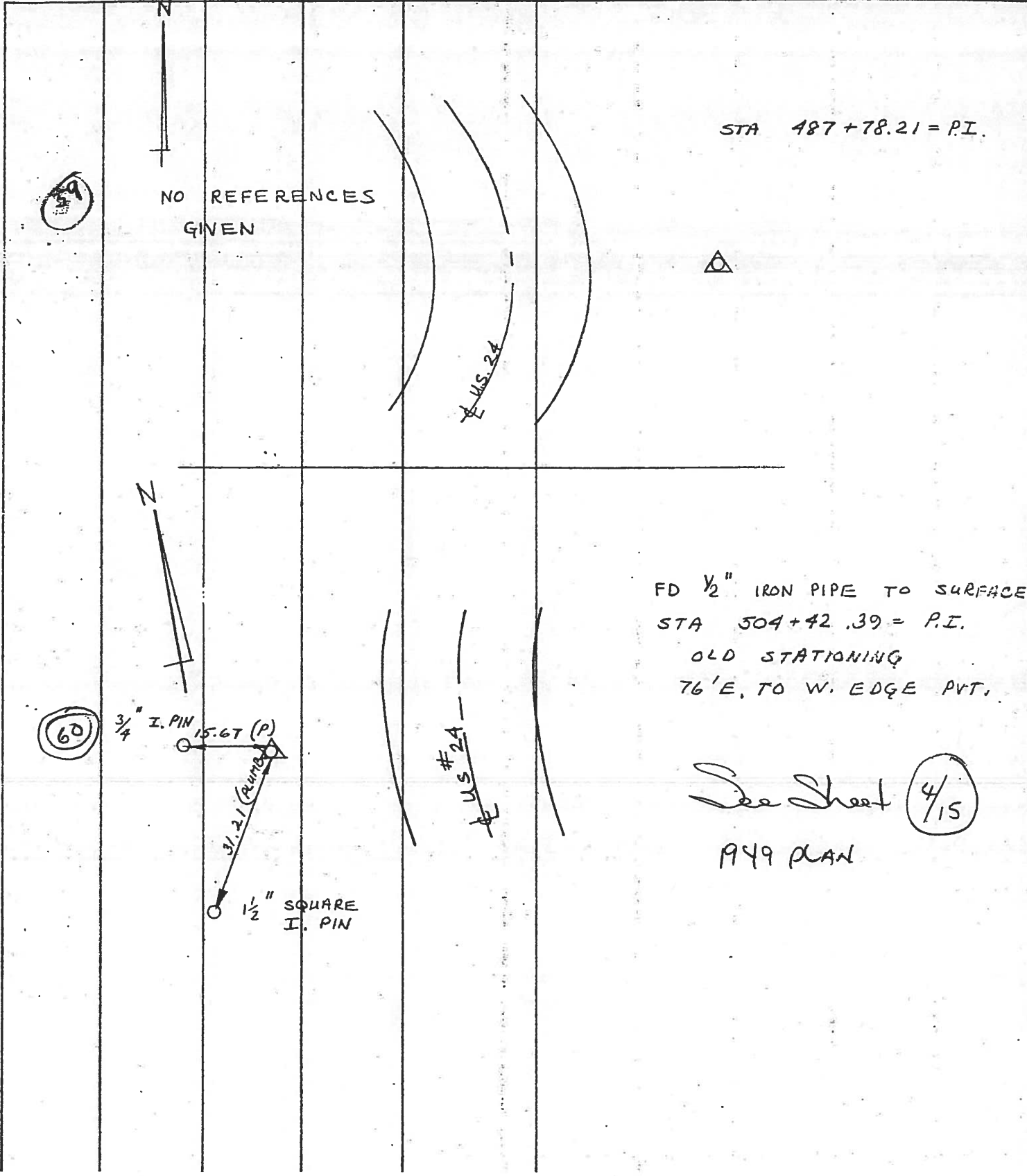


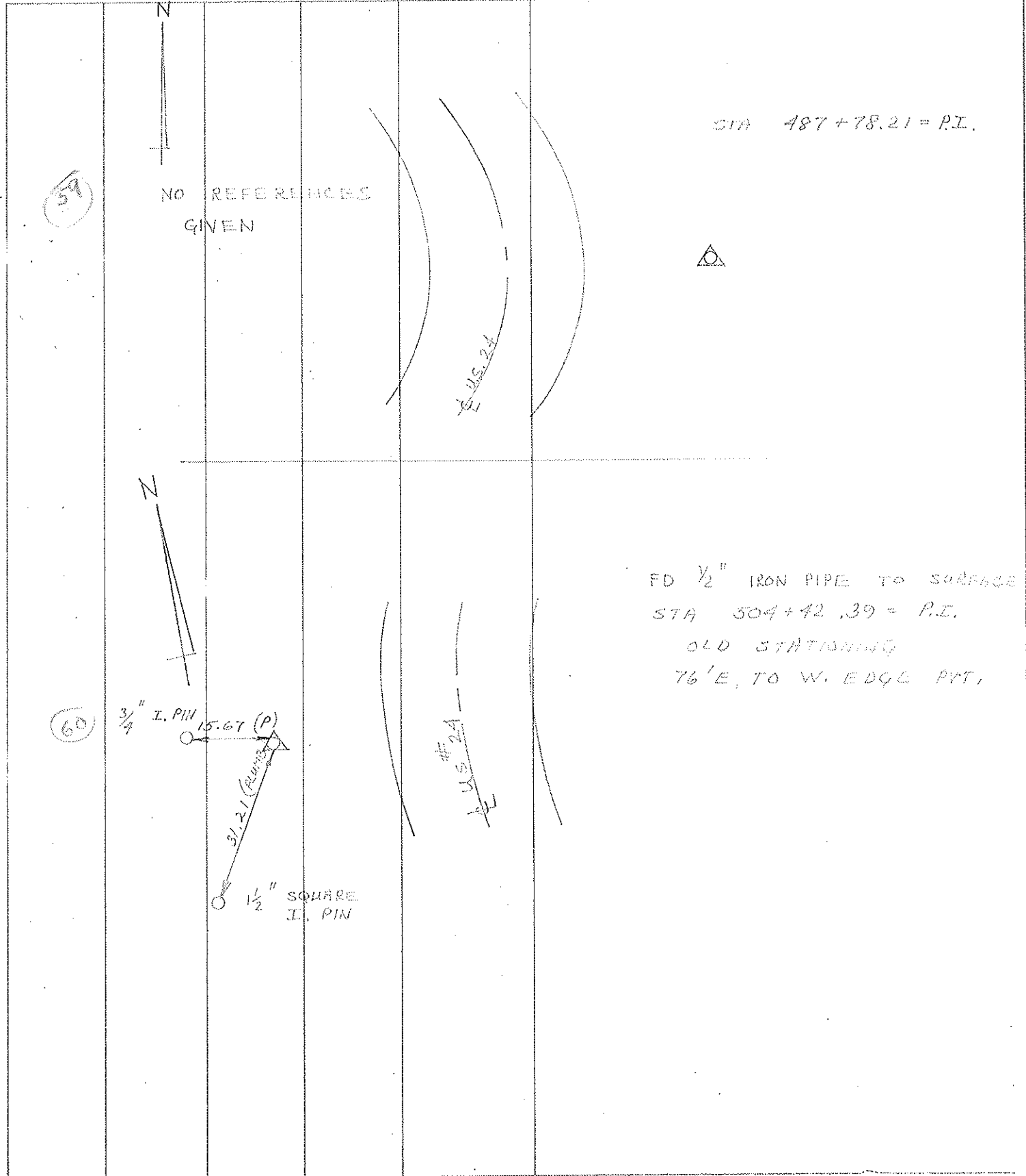
PERSONNEL	TITLE	PERSONNEL	TITLE	COUNTY	DATE	WEATHER	TEMP
D. CURTIS				LUCAS	JULY 8, 1971	CLOUDY	70±
D. STEVENS				U.S. # 24			
R. BRANNAN							

DESCRIPTION _____ REFERENCES TO CONTROL POINTS _____ JOB NO. _____
LEFT CENTER LINE RIGHT



PERSONNEL	TITLE	PERSONNEL	TITLE	COUNTY	DATE
D. CURTIS				LUCAS	JULY 8, 1971
D. STEVENS				U.S. # 24	WEATHER CLOUDY
R. BRADMAN					TEMP. 70 ⁺

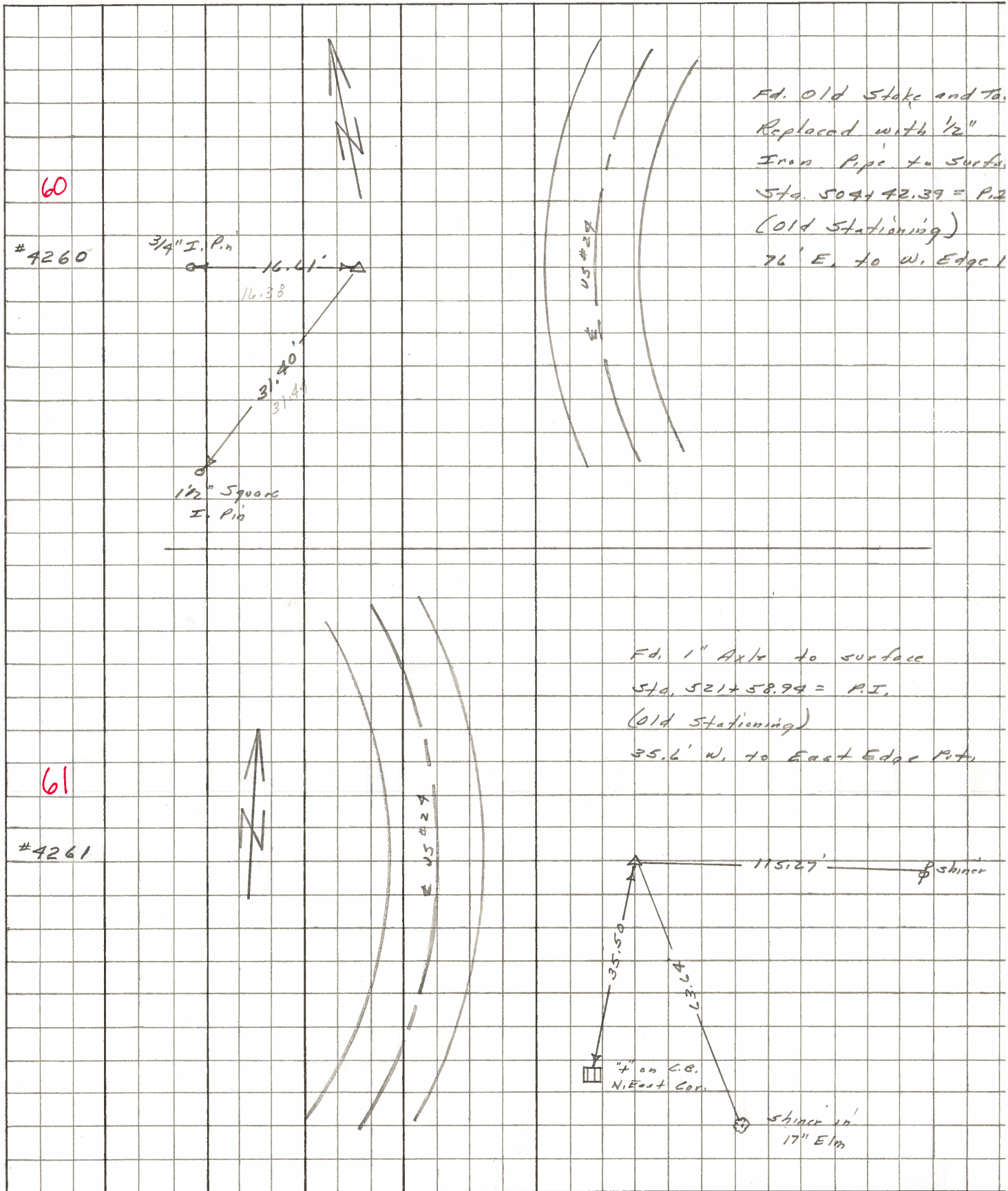
DESCRIPTION	REFERENCES TO CONTROL POINTS	JOB NO.
	LEFT CENTER LINE RIGHT	



PERSONNEL	TITLE	PERSONNEL	TITLE	COUNTY	DATE
Stone	Notes			Lucas	JUNE 68
Beck	Flag			S. R. #29	WEATHER Fair
Michalak	Tape			SEC. Waterville to Maurice	TEMP.
Schroder	Tape				

DESCRIPTION Reference to Control Points JOB NO. _____

LEFT CENTER LINE RIGHT



PERSONNEL TITLE PERSONNEL TITLE
 Stone Schroder
 Danno
 Beck
 Brindley

COUNTY Lucas DATE 7 Feb. 66
 S. R. #24 WEATHER H. 14
 SEC. TEMP. 50°

DESCRIPTION Pts. To Central Pts. JOB NO.

LEFT CENTER LINE RIGHT

✓	787+78.72 = P.I. 59			SEARCHED FOR - COULD NOT FIND
✓	504+42.39 = P.I. 60			SEARCHED FOR - COULD NOT FIND
✓	521+58.94 = P.I. 61	Fd. 1" Axle at Surface	115.27' 63.64' 35.50' 35.6'	E. To Shiner in P.P. (P) S.E. To Shiner in 17" Elm (D) S.W. To "4" on C.B. (P) Pl. Angles to EX. SR#24
✓	558+61.70 = P.I. 63	Fd. 3/4" I. Pin at Surface	87.25' 86.15' 85.35' 70.40'	N.W. To Shiner in P.P. (D) W. To Shiner in P.P. Tie (D) S.W. To Shiner in P.P. (D)
✓	557+72.88 = Dutch Rd. (SEE BELOW) 62			SEARCHED FOR - COULD NOT FIND
	593+69.45 = P.I.			SEARCHED FOR - COULD NOT FIND
✓	616+75.45 = P.I. (E Black Rd.) 65	Fd. Mo. B. Rd. Mon. To Surface	97.65' 33.73' 82.29' 53.51'	S.W. To Shiner in P.P. (D) N.W. To "4" on Conv. Curb (D) S. To Shiner in T.P. (D) N.E. To Shiner in L.P. (D)
✓	Dutch Rd. Fd. R.R. Spk. To Surface (Looks To Be on Back Tang.)		28.02' 86.06' 79.40' 59.60'	S.W. To Shiner in T.P. (D) N. To 3/4" I.P. (P.I. 558+61.70) W.S.W. To Shiner in P.P. (D) N.W.
				283

PERSONNEL TITLE PERSONNEL TITLE

COUNTY Lucas

DATE 3-16-53

S. R. #24

WEATHER

SEC. B & Waterville

TEMP.

DESCRIPTION

LEFT

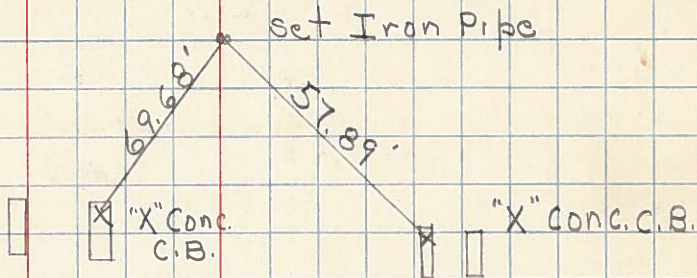
CENTER LINE

RIGHT

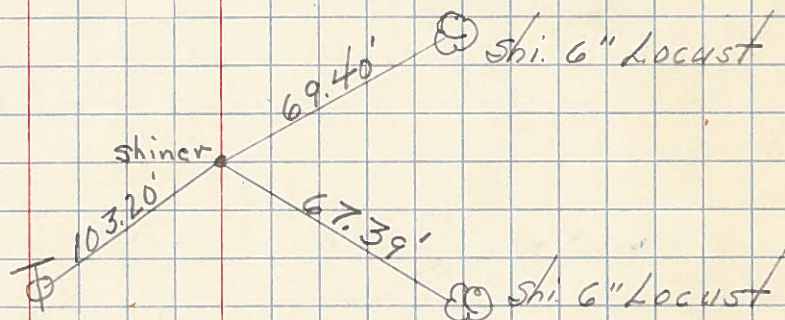
JOB NO.

Sta. 494+17.25 P.T.

No



Sta. 499+13.26 P.C.



✓ Sta. 504+42.39 P.I.

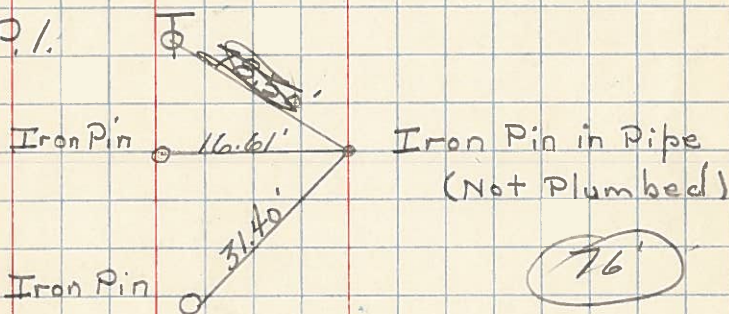
$\Delta = 28^\circ - 30'$ Rt.

D = 2° - 45'

T = 529.13

L = 1036.36

60



Sta. 509+49.62 P.T.

