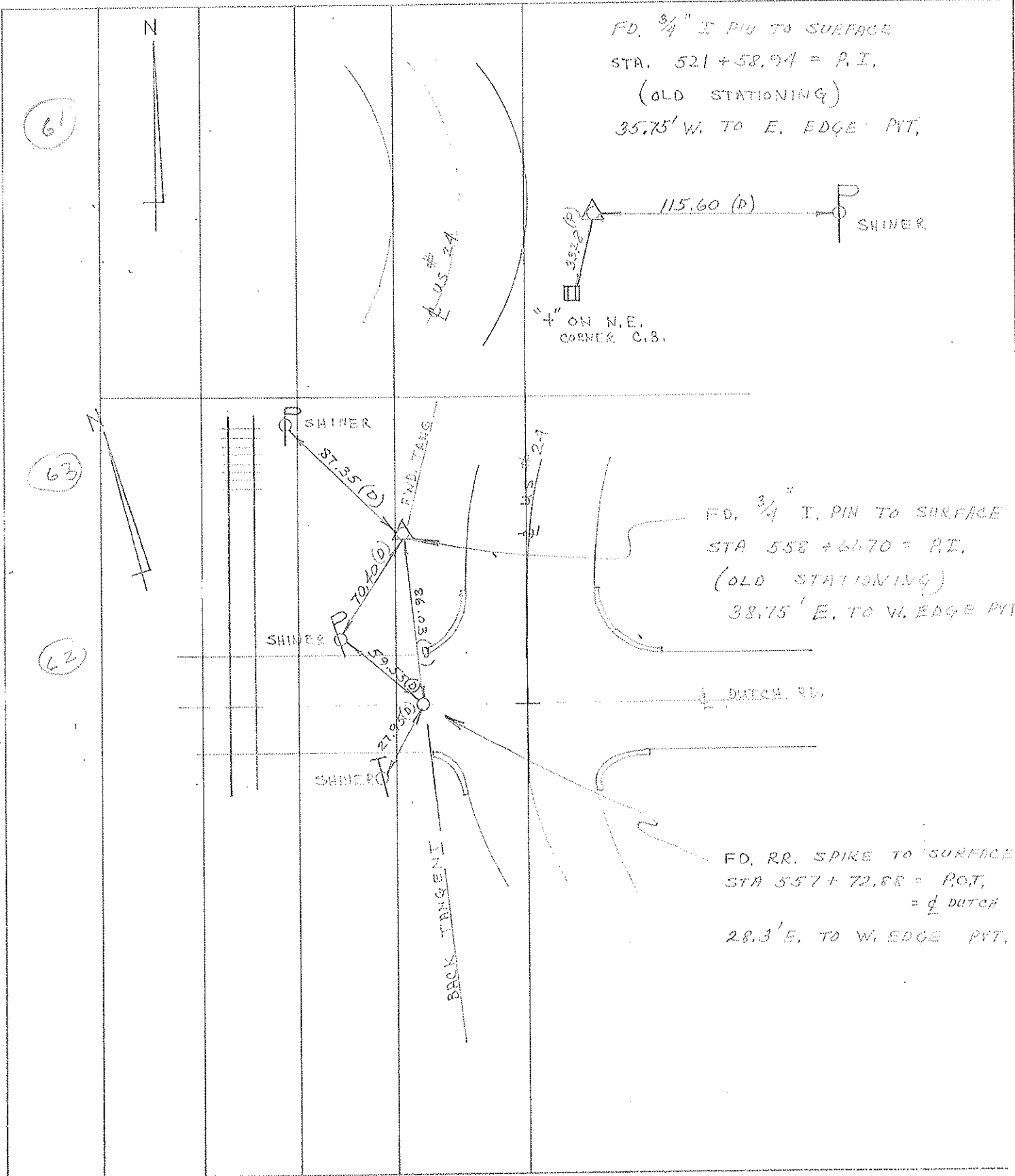


PERSONNEL TITLE PERSONNEL TITLE  
D. CURTIS \_\_\_\_\_  
D. STEVENS \_\_\_\_\_  
R. BRANNAN \_\_\_\_\_

COUNTY LUCAS DATE JULY 9, 1971  
 S. R. U.S. #24 WEATHER CLOUDY  
 SEC \_\_\_\_\_ TEMP. 80±

DESCRIPTION REFERENCE TO CONTROL POINTS JOB NO. \_\_\_\_\_  
 LEFT CENTER LINE RIGHT



FD.  $\frac{3}{4}$ " I. PIN TO SURFACE  
 STA. 521+58.94 = P.I.  
 (OLD STATIONING)  
 35.75' W. TO E. EDGE PVT.

115.60 (D)  
 SHINER  
 4" ON N.E. CORNER C.B.

FD.  $\frac{3}{4}$ " I. PIN TO SURFACE  
 STA 558+64.70 = P.I.  
 (OLD STATIONING)  
 38.75' E. TO W. EDGE PVT.

FD. RR. SPIKE TO SURFACE  
 STA 557+72.88 = P.O.T.  
 =  $\frac{1}{2}$  DUTCH  
 28.3' E. TO W. EDGE PVT.

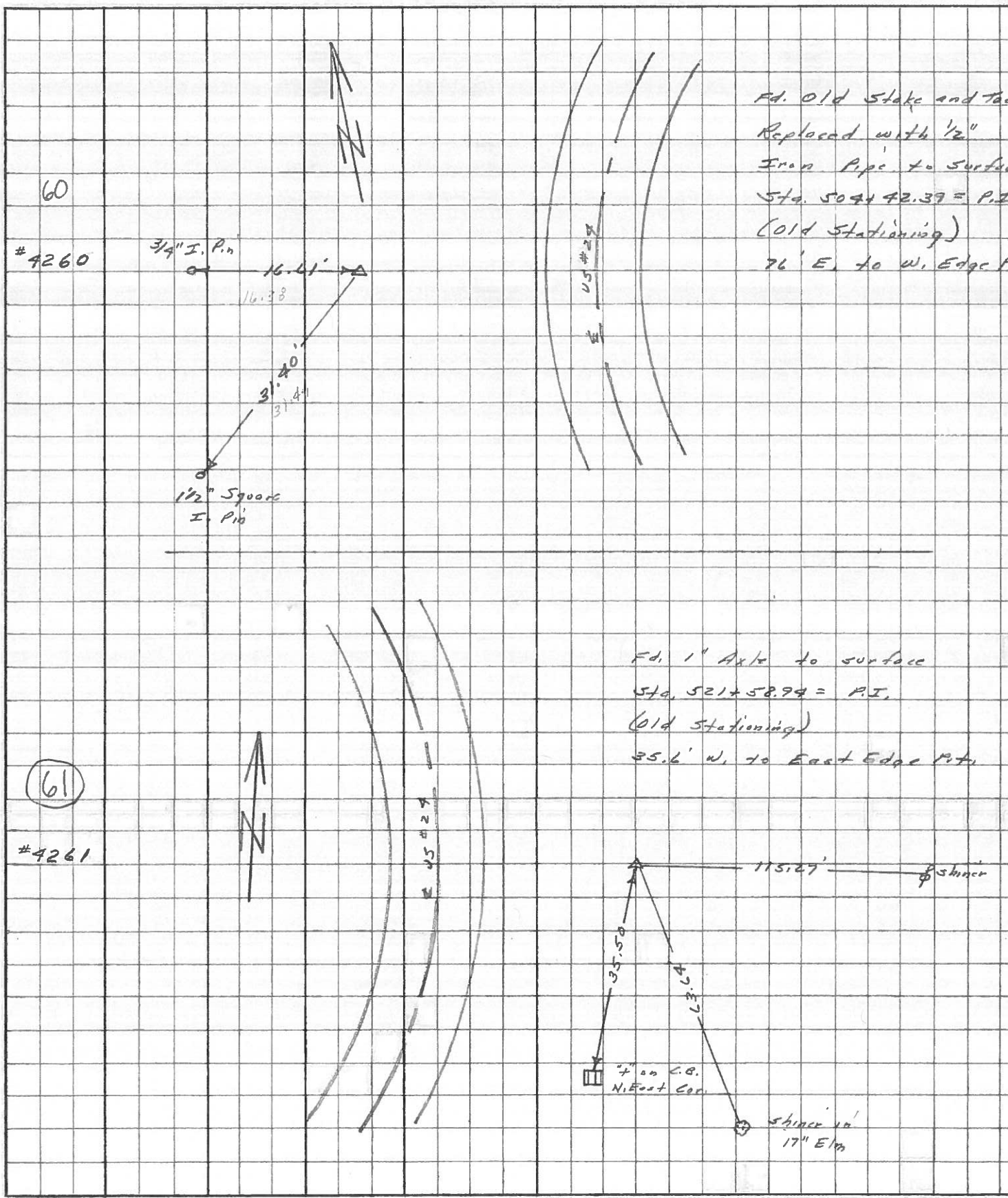
61

63

62

PERSONNEL	TITLE	PERSONNEL	TITLE	COUNTY	DATE
Stone	Notes			Lucas	June 68
Beck	Flag			S. R. #29	WEATHER Fair
Michalak	Tape			SEC. Waterville to Maurice	TEMP.
Schroder	Tape				

DESCRIPTION References to Control Points JOB NO.



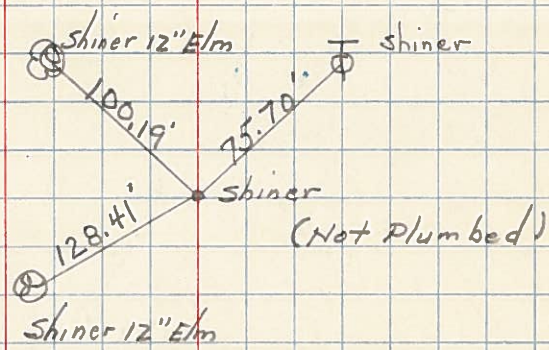
PERSONNEL	TITLE	PERSONNEL	TITLE	COUNTY	Lucas	DATE	7 Feb. 66
Stone		Schroder		S. R.	#24	WEATHER	Mild
Denno				SEC.		TEMP.	50°
Beck				DESCRIPTION	Rds. To Central Pts.		JOB NO.
Brindley							

LEFT	CENTER LINE	RIGHT
✓ 487+78.72 = P.I. 59		SEARCHED FOR - COULD NOT FIND
✓ 504+42.39 = P.I. 60		SEARCHED FOR - COULD NOT FIND
✓ 521+58.94 = P.I. Fd. 1" Axle 61 at Surface	115.27' 63.64' 35.50' 35.6'	E. To Shiner in P.P. (P) S.E. To Shiner in 17" Elm (D) S.W. To "4" on C.E. (P) Rt. Angles to Ex. SR#24
✓ 558+61.70 = P.I. Fd. 3/4" I. Pin 63 at Surface	87.25' 86.15' <del>85.85'</del> 70.40'	N.W. To Shiner in P.P. (D) W. To Shiner in P.P. Tie (D) S.W. To Shiner in P.P. (D)
✓ 557+72.88 = Dutch Rd. (SEE BELOW) 62		SEARCHED FOR - COULD NOT FIND
593+69.45 = P.I.		SEARCHED FOR - COULD NOT FIND
✓ 616+75.45 = P.I. (E. Black Rd.) 65 Fd. No. 8. Rd. Home 83.82 To Surface	97.65' 33.73' 82.29' 53.51'	S.W. to Shiner in P.P. (D) a S.W. To "4" on Conv. Curve (D) S. To Shiner in T.P. (D) N.E. to Shiner in L.P. (D)
✓ Dutch Rd. Fd. RR Spk. To Surface (Looks To Be ON Back Tang.)	28.02' 86.06' 79.40' 59.60'	S.W. To Shiner in T.P. (D) N. To 3/4" I.P. (P.I. 558+61.70) W.S.W. To Shiner in P.P. (D) N.W. 283

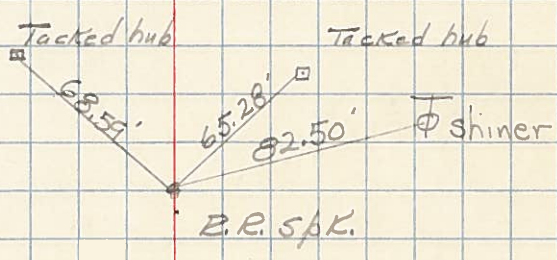


PERSONNEL	TITLE	PERSONNEL	TITLE	COUNTY	DATE
				Lucas	3-16-53
				S. R. #24	WEATHER
				SEC.	TEMP.
DESCRIPTION				JOB NO.	
Waterville - Maumee					
LEFT		CENTER LINE		RIGHT	

Sta. 516 + 16.44 P.C.



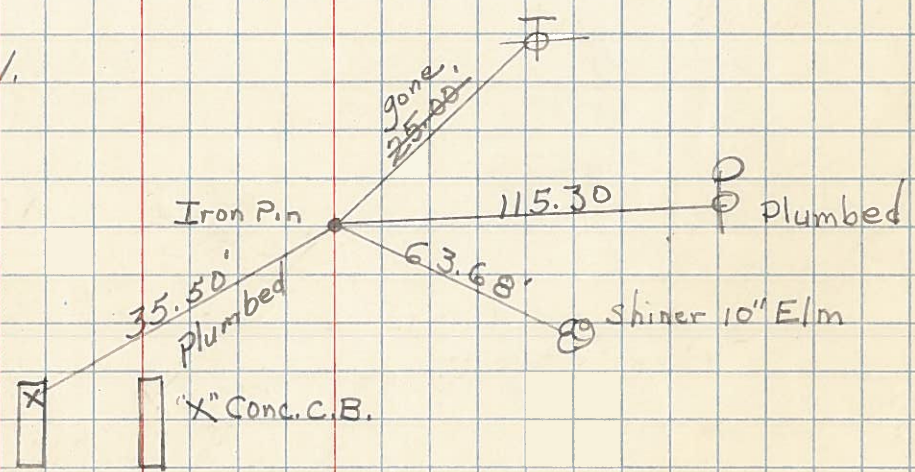
Sta. 517 + 81.60  
E. Rd. Lt.



35.6

✓ Sta. 521 + 58.94 P.I.

61



Sta. 526 + 81.77 P.T.

