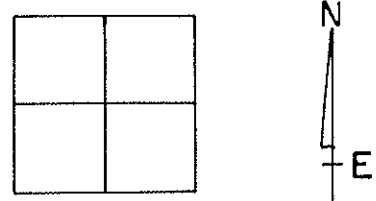


O.D.O.T. DISTRICT 2 SURVEY OFFICE

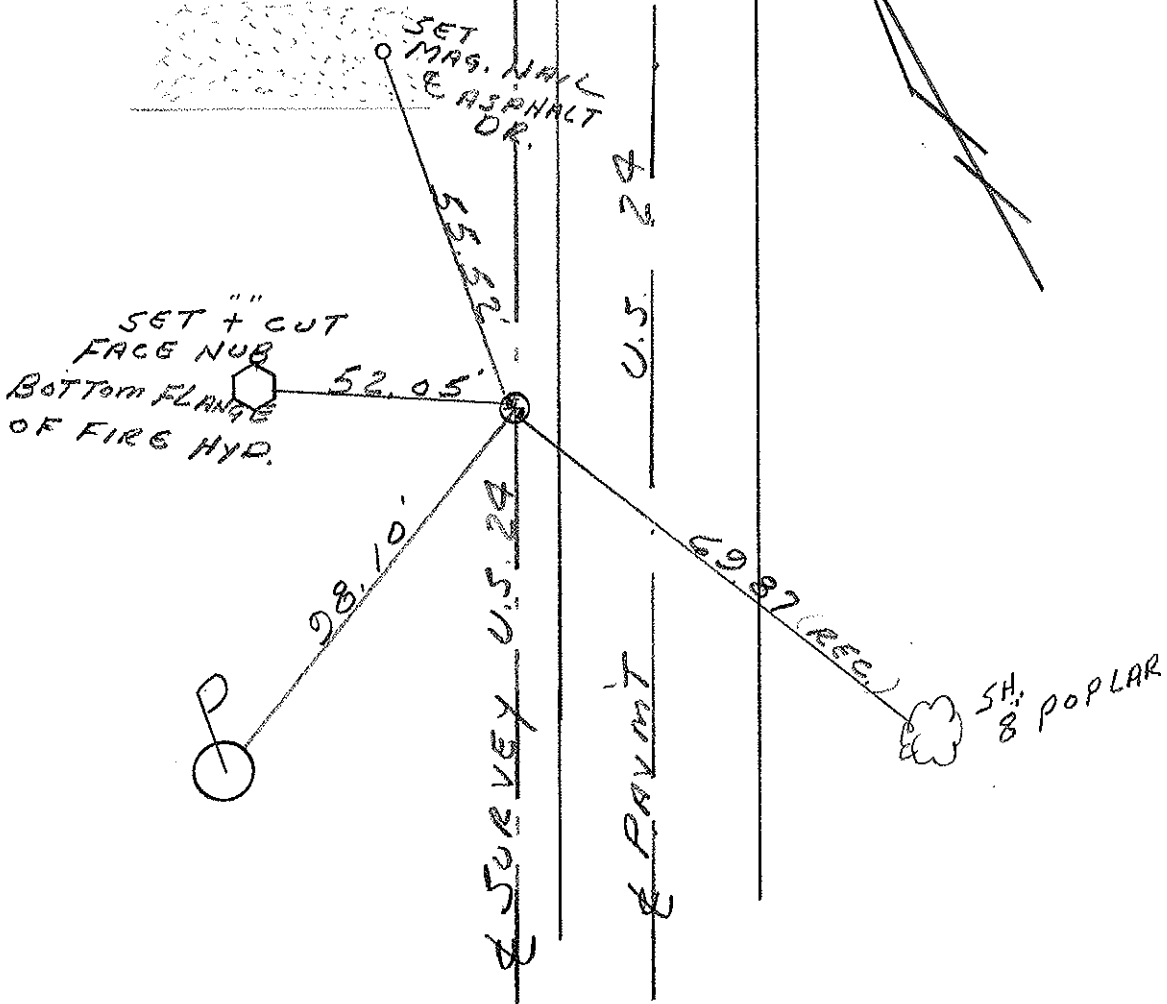
PERSONNEL _____ REFERENCE NO. 61-A SHEET 68 OF 68
 NOTES HUSS
 H.C. VAN DUSEN DATE 6-10-97 ROUTE U.S. 24
 R.C. MOSER WEATHER SUNNY COUNTY LUCAS
 _____ TEMP. +75° F TOWNSHIP WATERVILLE
 _____ SECTION _____
 T 6 N R 10 E

TYPE MONUMENT PK/W
 ON SURFACE - BELOW YES
 LEFT - ☉ PAV'T. - RIGHT 16.3
 TO EDGE PAVEMENT 4' LT. OF LT. EDGE
 S.L.M. 627+43



Record
 Fd by RR. Spk.
 6-18-97

SET PK & WASHER
 10-22-97
 SAN



O.D.O.T. DISTRICT 2 SURVEY OFFICE

PERSONNEL _____

REFERENCE NO. 61A

SHEET 10 OF _____

NOTES 1. Stone

H.C. D. Curtis

R.C. J. Householder

DATE 27 June 90

WEATHER Warm

TEMP. 84°

ROUTE US #24

COUNTY Lucas

TOWNSHIP Waterville

SECTION _____

T _____ R _____

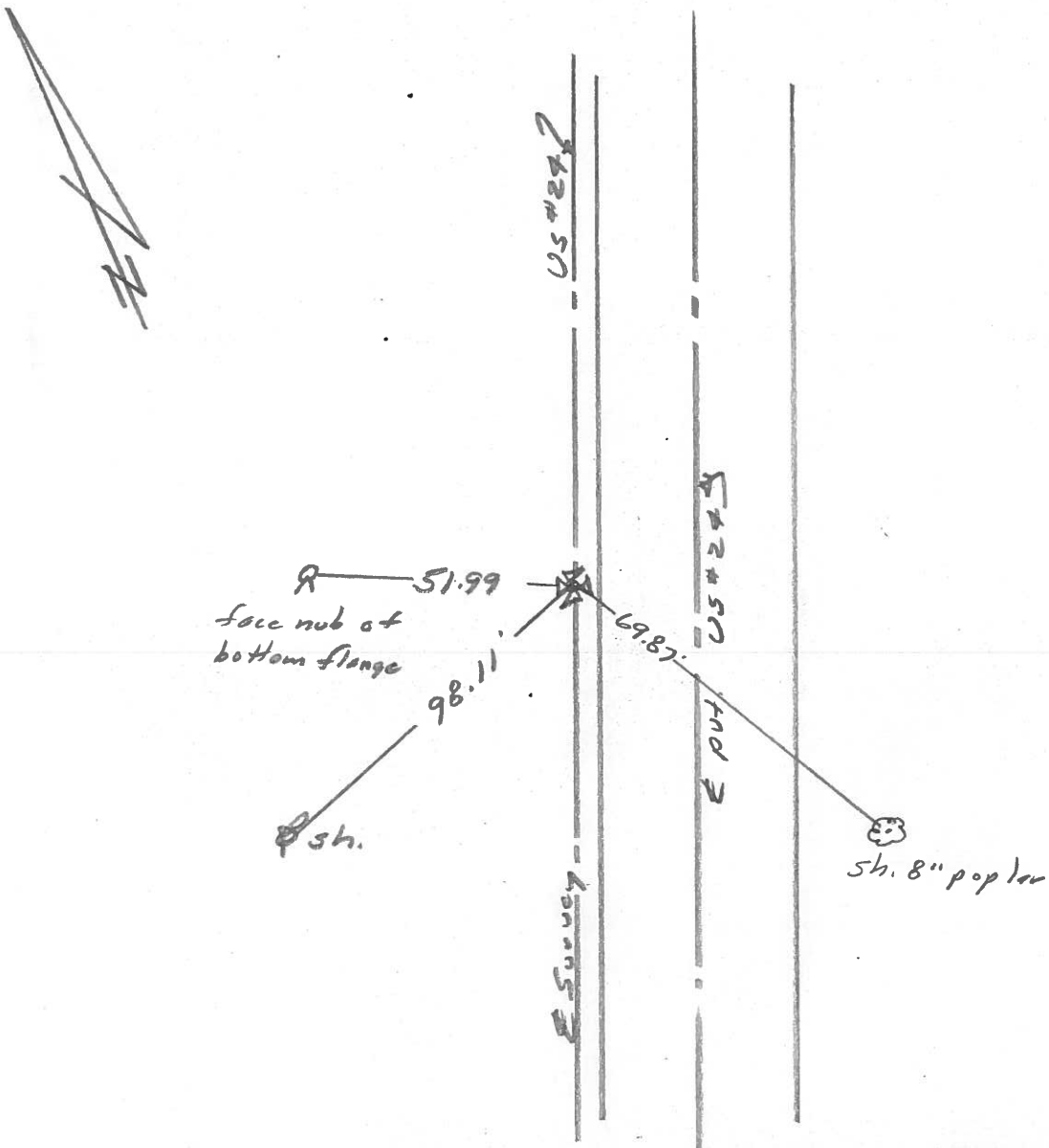
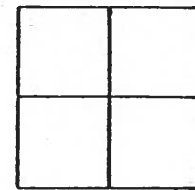
TYPE MONUMENT R.R. Spt.

ON SURFACE - BELOW Surface

LEFT - & PAV'T. - RIGHT _____

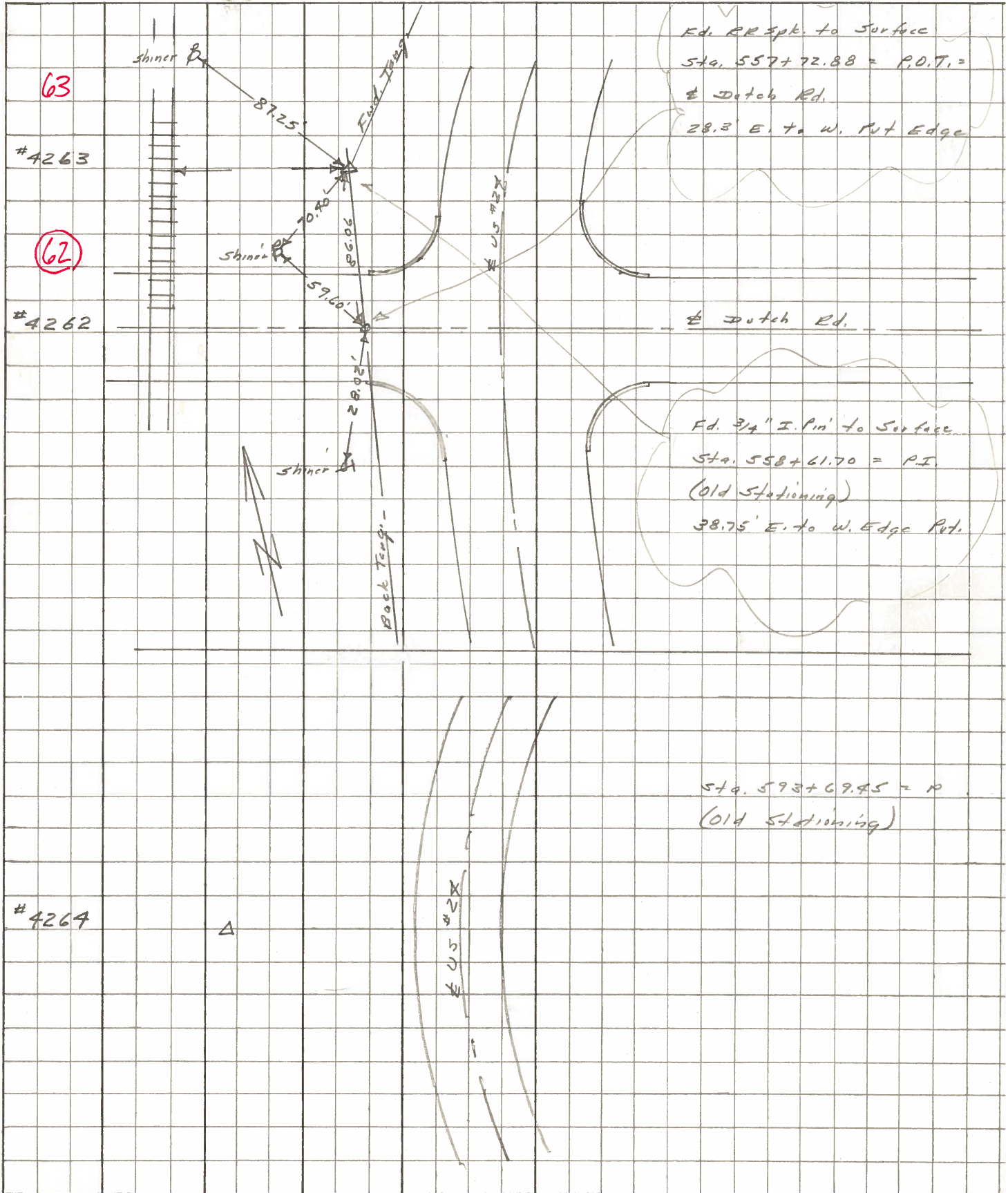
TO _____ EDGE PAVEMENT

S.L.M. P.T. Sta. 627+73.23



| PERSONNEL | TITLE | PERSONNEL | TITLE | COUNTY | DATE | WEATHER | TEMP. |
|-----------|-------|-----------|-------|---------------------------|---------|---------|-------|
| Stone | Notes | | | Lucas | June 68 | Fair | |
| Beck | Flag | | | # 24 | | | |
| Michelate | Tape | | | SEC. Waterville to Meowee | | | |
| Schroder | Tape | | | | | | |

DESCRIPTION References to Control Points JOB NO. _____



| | | | | | |
|---------------------------|----------------|------------------------------|----------------|---|--------------------------|
| PERSONNEL <u>Stone</u> | TITLE _____ | PERSONNEL <u>Schroder</u> | TITLE _____ | COUNTY <u>Lucas</u> | DATE <u>7 Feb. 66</u> |
| <u>Dennis</u> | _____ | _____ | _____ | S. R. <u>#24</u> | WEATHER <u>H. 1d</u> |
| <u>Beck</u> | _____ | _____ | _____ | SEC. _____ | TEMP. <u>50°</u> |
| <u>Brindley</u> | _____ | _____ | _____ | DESCRIPTION <u>Refs. To Control Pts.</u> | JOB NO. _____ |

| | LEFT | CENTER LINE | RIGHT |
|---|--|---|--|
| ✓ | 787+78.72 = P.I. 59 | | SEARCHED FOR - COULD NOT FIND |
| ✓ | 504+42.39 = P.I. 60 | | SEARCHED FOR - COULD NOT FIND |
| ✓ | 521+58.94 = P.I. 61 | 115.27' 63.64' 35.50' 35.6' | E. To Shiner in P.P. (P) S.E. To Shiner in 17" E.L. (D) S.W. To "4" on C.E. (P) Pl. Angles to Ex. SR #24 |
| ✓ | 558+61.70 = P.I. 63 | 87.25' 86.15' 86.85' 70.40' | N.W. To Shiner in P.P. (D) W. To Shiner in P.P. (D) S.W. To Shiner in P.P. (D) |
| ✓ | 557+72.88 = Dutch Rd. (SEE BELOW) 62 | | SEARCHED FOR - COULD NOT FIND |
| | 593+67.45 = P.I. | | SEARCHED FOR - COULD NOT FIND |
| ✓ | 616+75.45 = P.I. (Black Rd.) 65 | 97.65' 33.73' 82.29' 53.51' | S.W. To Shiner in P.P. (D) N.W. To "4" on Conv. Curve (D) S. To Shiner in T.P. (D) N.E. To Shiner in L.P. (D) |
| ✓ | Dutch Rd. Fd. R.R. Spk. To Surface (Looks To Be On Back Tang.) | 28.02' 86.06' 79.40' 59.60' | S.W. To Shiner in T.P. (D) N. To 3/4" I.P. (P.I. 558+61.70) W.S.W. To Shiner in P.P. (D) N.W. |

PERSONNEL TITLE PERSONNEL TITLE

COUNTY Lucas

DATE 3-16-53

S. R. #24

WEATHER

SEC.

TEMP.

DESCRIPTION

Waterville - Maumee

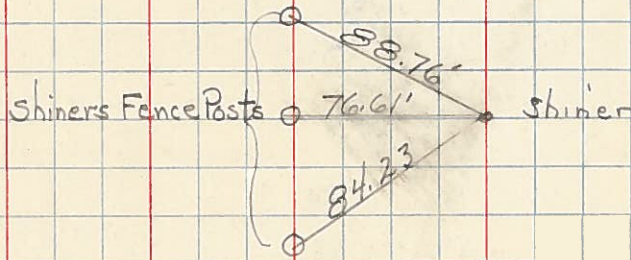
JOB NO.

LEFT

CENTER LINE

RIGHT

Sta. 553+17.16 P.C.



Sta. 558+61.70' P.I.

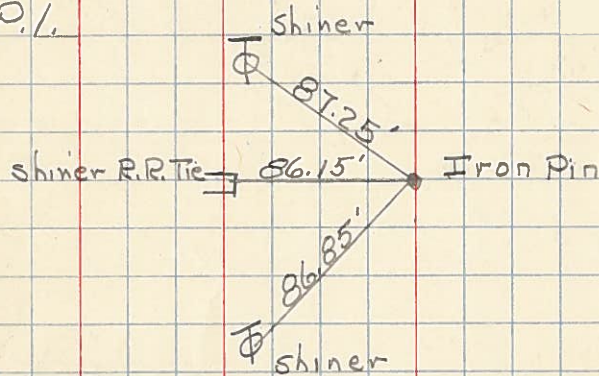
$\Delta = 13^\circ - 33' \text{ Rt.}$

$D = 1^\circ - 15'$

$T = 544.54$

$L = 1084.00$

63

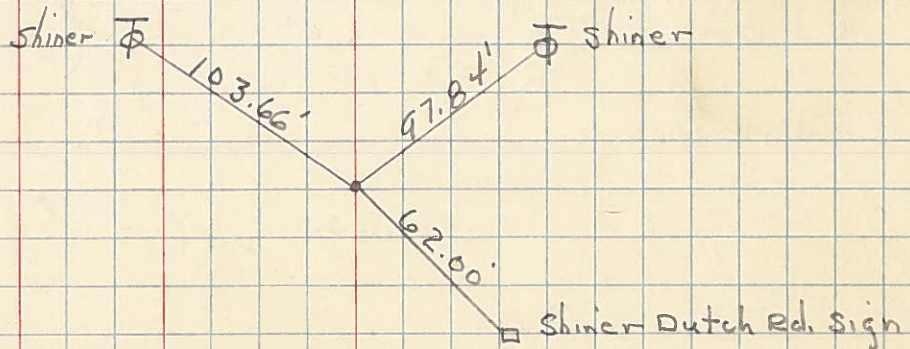


88.82

Sta. 557+72.88

Dutch Rd.

62



Sta. 564+01.16 P.T.

Shiners in R.R. Ties @ Joint

