

O.D.O.T. DISTRICT 2 SURVEY OFFICE

PERSONNEL _____

REFERENCE NO. 63

SHEET 6 OF _____

NOTES L. Stone

H.C. J. Curtis

R.C. J. Hanscholder

DATE 27 June 90

WEATHER Woods

TEMP. 80°

ROUTE US #24

COUNTY Lucas

TOWNSHIP Wadonville

SECTION 16

T. _____ R. _____

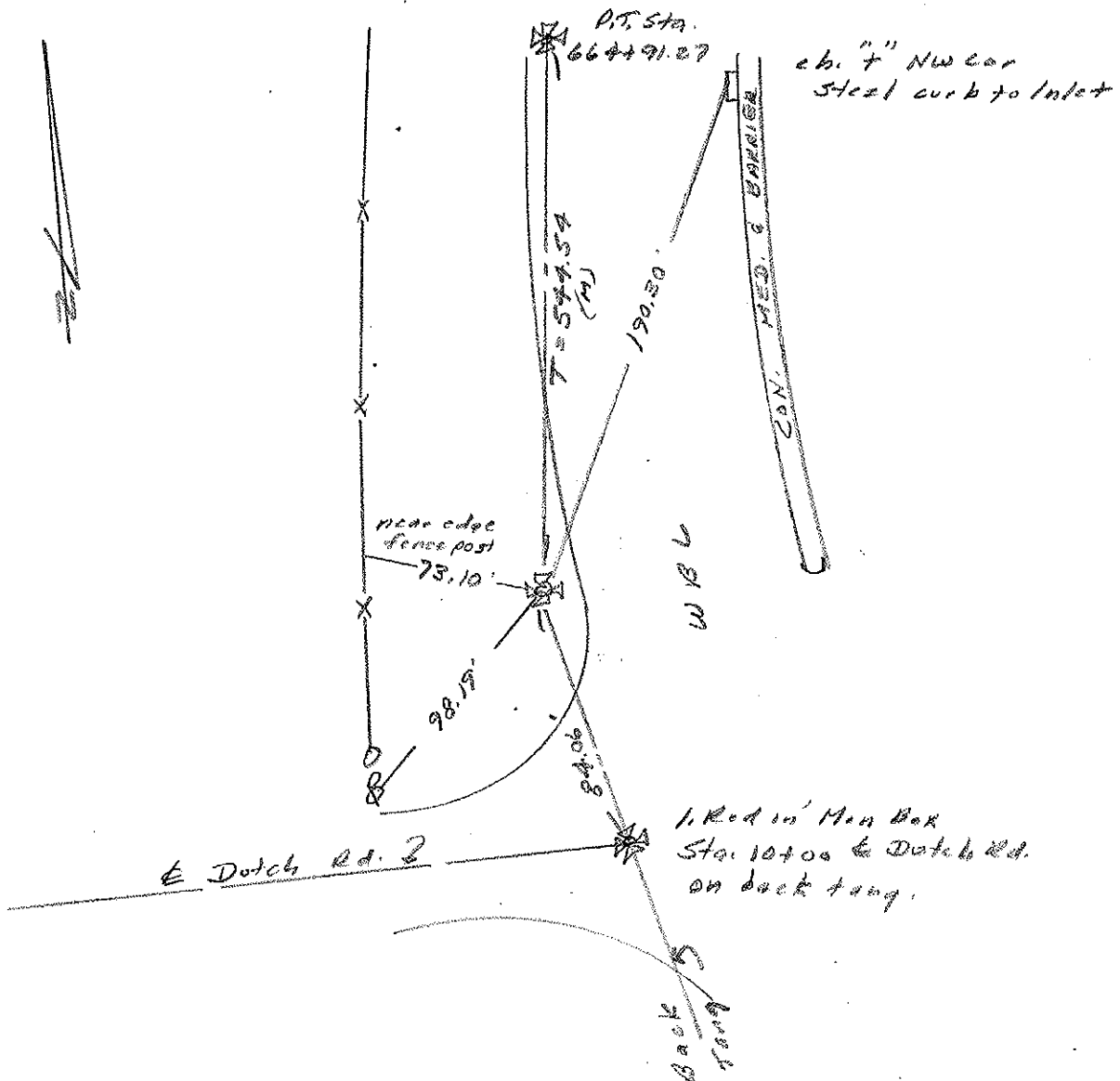
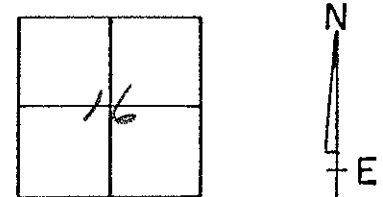
TYPE MONUMENT 1. Rod 10' Con.

ON SURFACE - BELOW Surface

LEFT - \odot PAV'T. - RIGHT _____

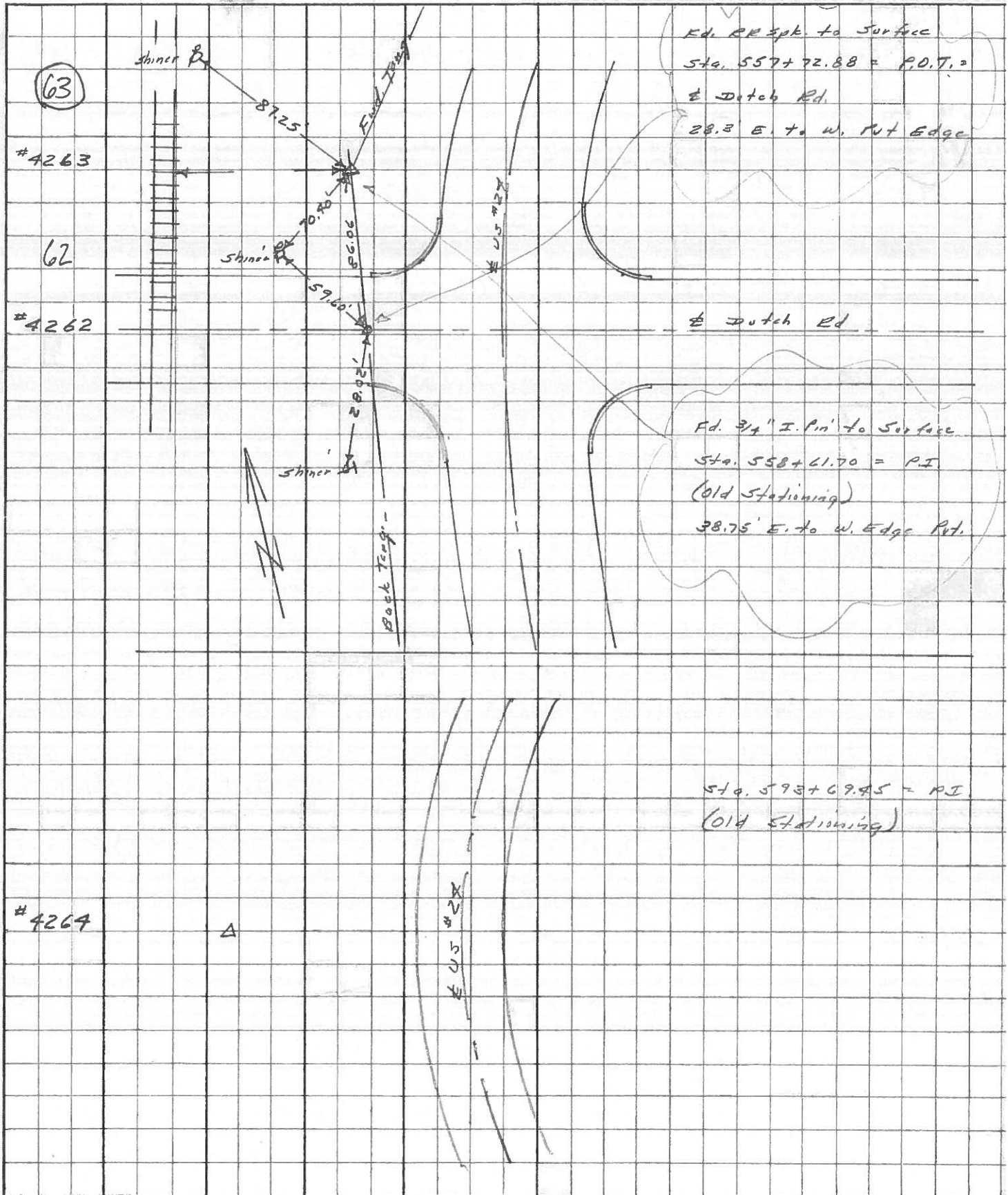
_____ TO _____ EDGE PAVEMENT

S.L.M. P.I. Sta. 659+51.81



| PERSONNEL | TITLE | PERSONNEL | TITLE | COUNTY | DATE | WEATHER | TEMP. |
|-----------|-------|-----------|-------|---------------------------|---------|---------|-------|
| Stone | Notes | | | Lucas | June 68 | Fair | |
| Beck | Flag | | | #24 | | | |
| Michelak | Tape | | | SEC. Waterville to Madawa | | | |
| Schroder | Tape | | | | | | |

DESCRIPTION References to Control Points JOB NO. _____



| | | | | | |
|-----------|-------|-----------|-------|-----------|---------------|
| PERSONNEL | TITLE | PERSONNEL | TITLE | COUNTY | DATE |
| Stone | | Schroder | | Lucas | 7 Feb. 66 |
| Denno | | | | S. R. #24 | WEATHER 14.1d |
| Beck | | | | SEC. | TEMP. 50° |
| Brindley | | | | | |

DESCRIPTION Pts. To Control Pts. JOB NO. _____

| | LEFT | CENTER LINE | RIGHT |
|---|--|---|---|
| ✓ | 487+78.72 = P.I. 59 | | SEARCHED FOR - COULD NOT FIND |
| ✓ | 504+42.39 = P.I. 60 | | SEARCHED FOR - COULD NOT FIND |
| ✓ | 521+58.94 = P.I. 61 | 115.27' 63.64' 35.50' 35.6' | E. To Shiner in P.P. (P) S.E. To Shiner in 17" Elm (D) S.W. To "4" on C.B. (P) Rt. Angles to Ex. SR#24 |
| ✓ | 558+61.70 = P.I. 63 | 87.25' 86.15' 86.85' 70.40' | N.W. To Shiner in P.P. (D) W. To Shiner in R.R. Tie (D) S.W. To Shiner in P.P. (D) |
| ✓ | 557+72.88 = Dutch Rd. (SEE BELOW) 62 | | SEARCHED FOR - COULD NOT FIND |
| | 593+67.45 = P.I. | | SEARCHED FOR - COULD NOT FIND |
| ✓ | 616+75.45 = P.I. (Black Rd.) 65 | 97.65' 33.73' 82.29' 53.51' | S.W. To Shiner in P.P. (D) S.W. To "4" on Conv. Curb (D) S. To Shiner in T.P. (D) N.E. To Shiner in L.P. (D) |
| ✓ | Dutch Rd. Fd. R.R. Spk. To Surface (Looks To Be On Back Tang.) | 28.02' 86.06' 79.40' 59.60' | S.W. To Shiner in T.P. (D) N. To 3/4" I.P. (P.I. 558+61.70) W.S.W. To Shiner in P.P. (D) N.W. |
| | | | 283 |

PERSONNEL TITLE PERSONNEL TITLE

COUNTY Lucas

DATE 3-16-53

S. R. #24

WEATHER

SEC.

TEMP.

DESCRIPTION

Waterville - Maumee

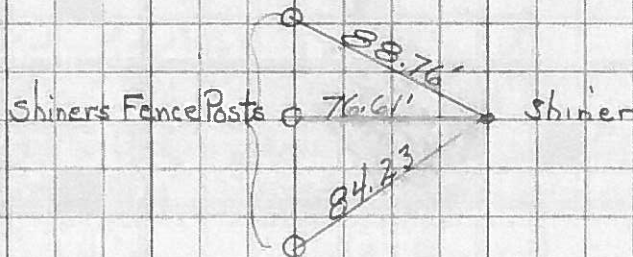
JOB NO.

LEFT

CENTER LINE

RIGHT

Sta. 553+17.16 P.C.



Sta. 558+61.70' P.L.

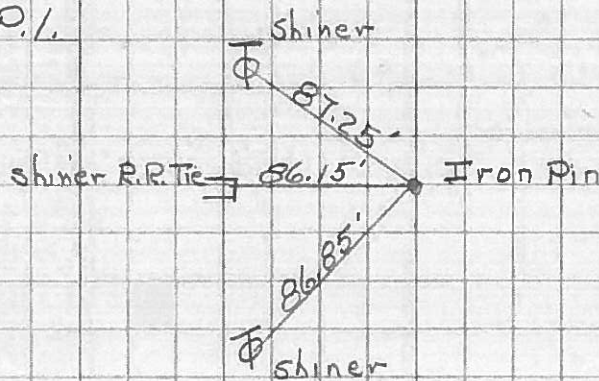
$\Delta = 13^\circ - 33' \text{ Rt.}$

$D = 1^\circ - 15'$

$T = 544.54$

$L = 1084.00$

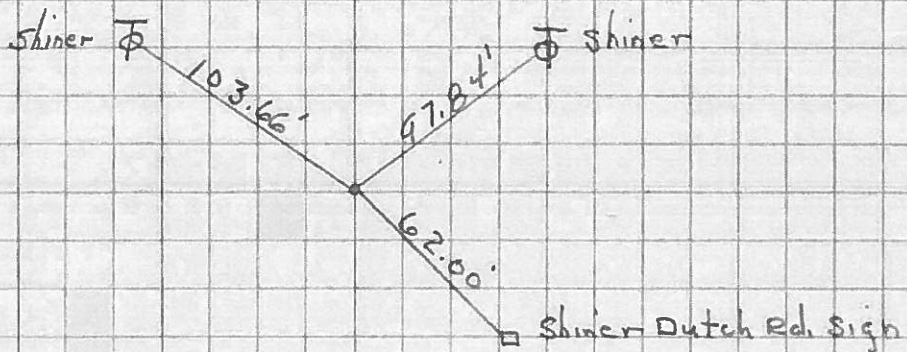
63



Sta. 557+72.88

~~Dutch Rd.~~

62



Sta. 564+01.16 P.T.

Shiners in R.R. Ties @ Joint

