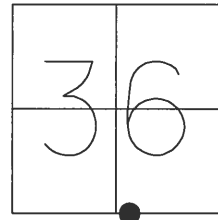


O.D.O.T. DISTRICT 2 SURVEY OFFICE (USE ONLY)

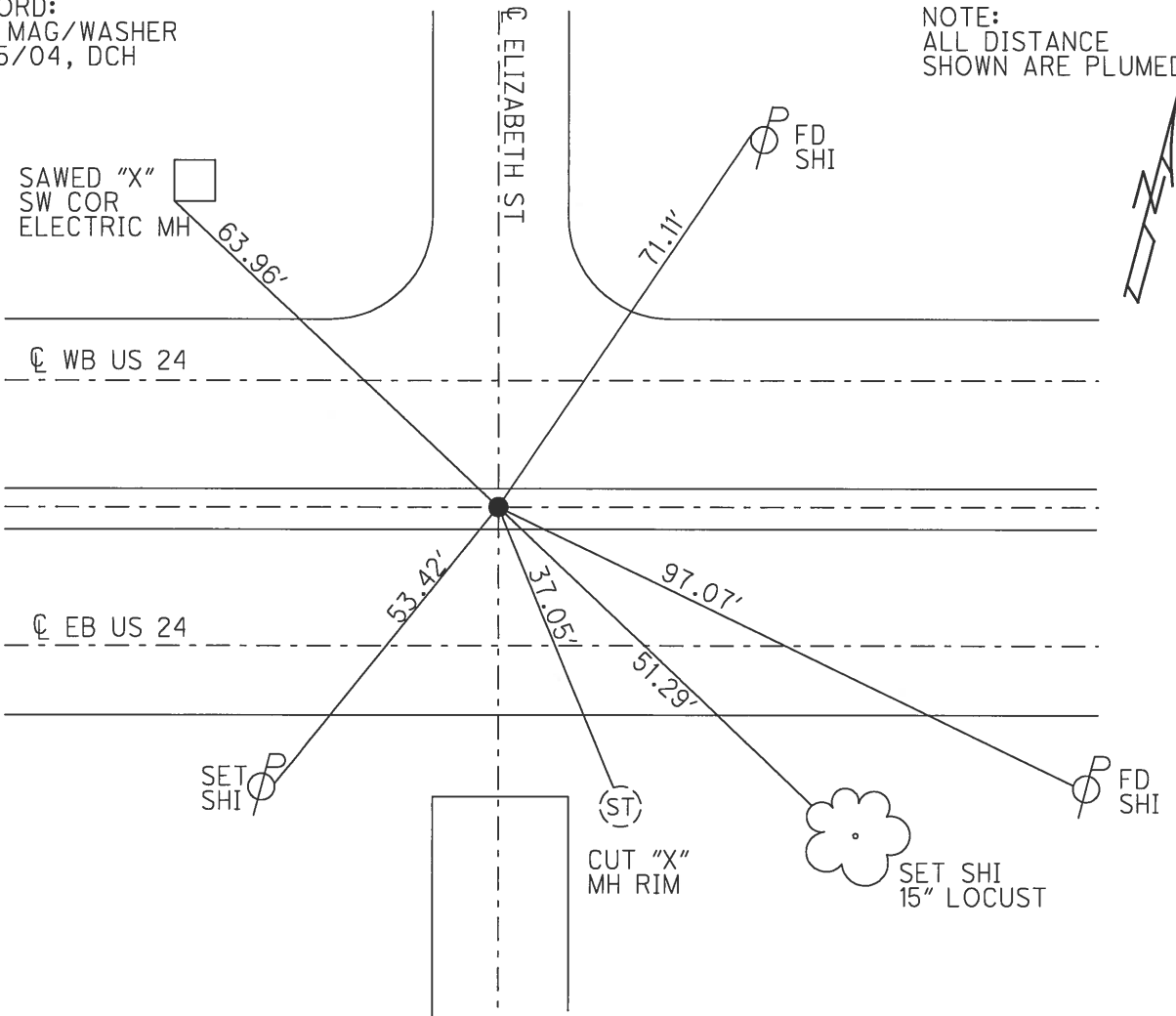
PERSONNEL _____ REFERENCE NO. 70A SHEET 4 OF 4
 NOTES HOMAN DATE 6/29/04 ROUTE US 24
 H.C. ADKINS WEATHER SUNNY COUNTY LUCAS
 R.C. NUHFER TEMP. 75° TOWNSHIP MAUMEE
 _____ SECTION 36
 _____ T 2 N R E

TYPE MONUMENT _____ IPIPE _____
 ON SURFACE - BELOW ON
 LEFT - ☉ PAV'T - RIGHT ON
 _____ TO _____ EDGE PAVEMENT
 S.L.M. 913+01
 GRID: NORTHING: _____ EASTING: _____



RECORD:
 SET MAG/WASHER
 8/25/04, DCH

NOTE:
 ALL DISTANCE
 SHOWN ARE PLUMED



O.D.O.T. DISTRICT 2 SURVEY OFFICE

PERSONNEL

REFERENCE NO. 70-A SHEET 4 OF 4

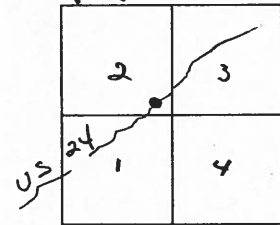
NOTES _____
 H.C. HOMAN
 R.C. ADKINS
NUHFER

DATE 6-29-04
 WEATHER SUNNY
 TEMP. 75°

ROUTE US 24
 COUNTY LUCAS
 TOWNSHIP _____
 SECTION _____

T N R E
 City of Maumee

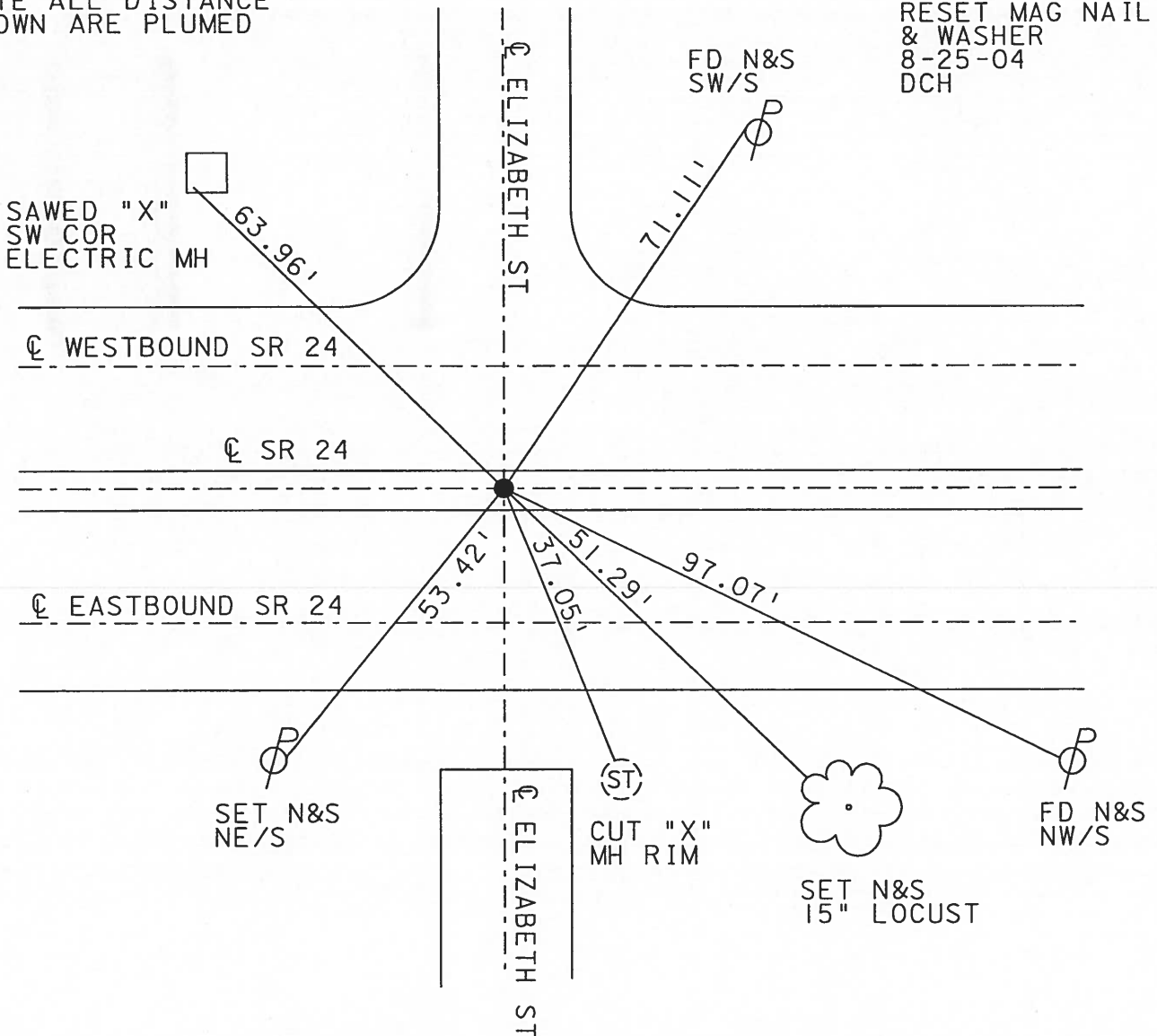
TYPE MONUMENT _____ I PIPE _____
 ON SURFACE ~~BELOW~~ _____ ON _____
~~LEFT~~ - Q PAV'T - ~~RIGHT~~ _____ ON _____
 _____ TO _____ EDGE PAVEMENT
 S.L.M. _____ 913+01



Twelve mile Square Reservation

NOTE ALL DISTANCE SHOWN ARE PLUMED

RESET MAG NAIL & WASHER
 8-25-04
 DCH



PERSONNEL TITLE PERSONNEL TITLE

COUNTY Lucas DATE 15 Oct. 87

Stone _____

S. R. US#24 WEATHER Fair

F _____

SEC. Maumee TEMP. 62°

Crow _____

DESCRIPTION

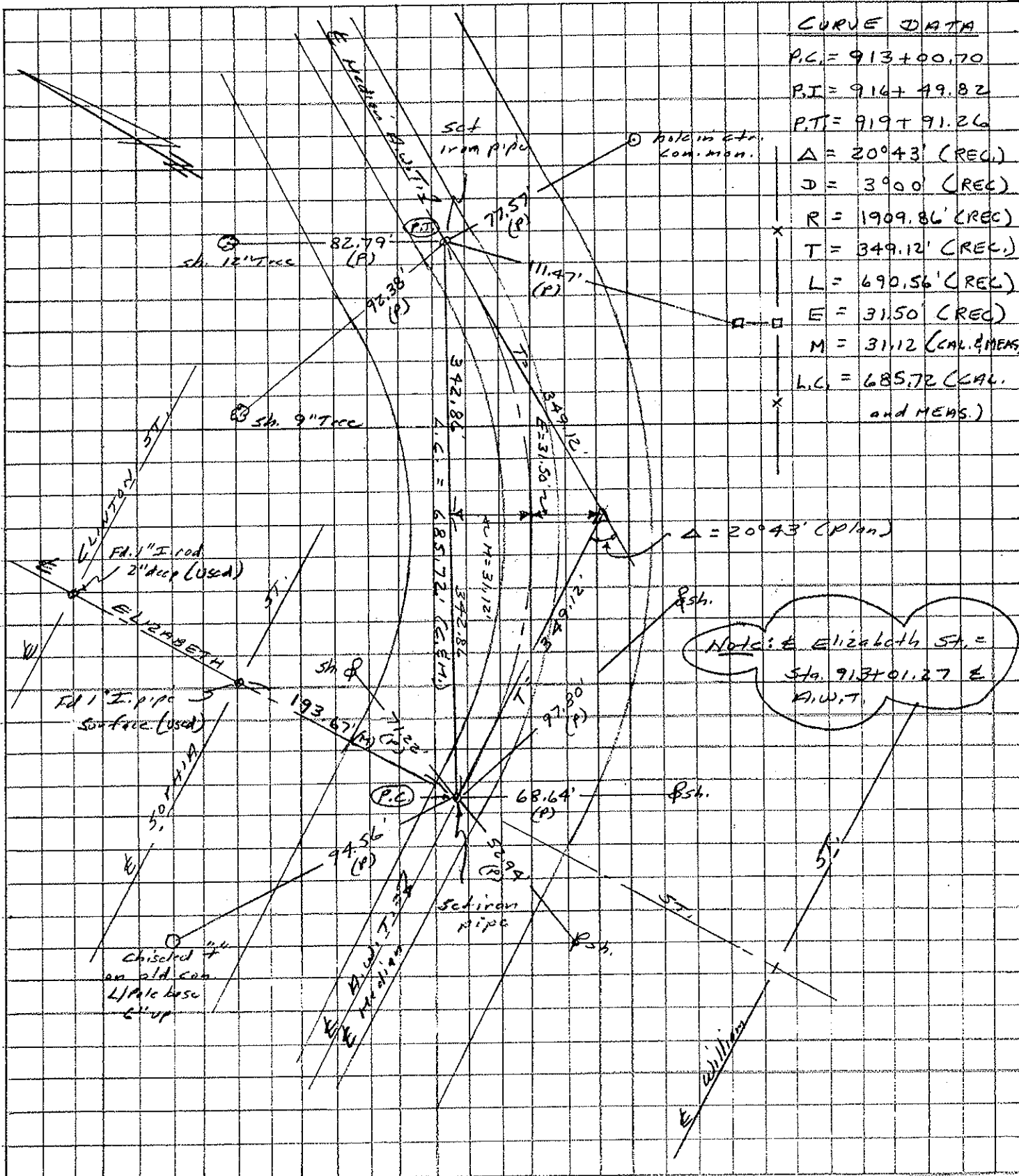
LEFT

CENTER LINE

RIGHT

JOB NO. 021930

Alignment



CURVE DATA

P.C. = 913+00.70

P.T. = 914+49.82

P.T. = 919+91.26

Δ = 20°43' (REC.)

D = 3900' (REC.)

R = 1909.86' (REC.)

T = 349.12' (REC.)

L = 690.56' (REC.)

E = 31.50' (REC.)

M = 31.12' (CAL. & MEAS.)

L.C. = 685.72' (CAL. and MEAS.)

Notice: Elizabeth St. = Sta. 913+01.27 E. A.W.T.